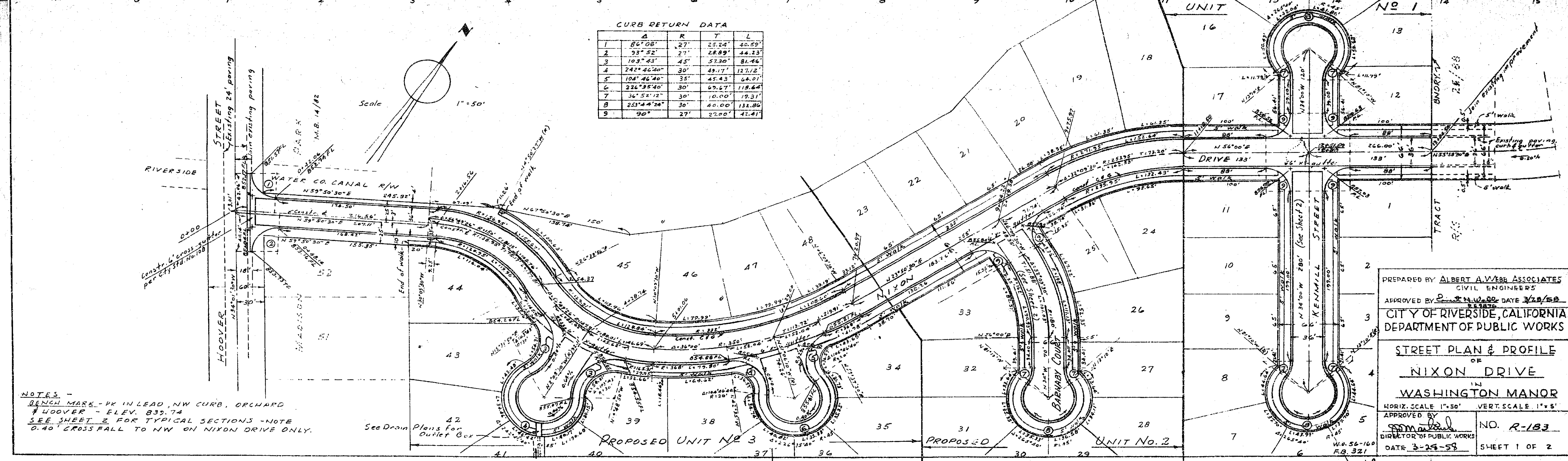


**PROFILE**

DATE	
BY	
CHECKED	
APPROVED	
NO.	
PROJECT	
DATE	

**CURB RETURN DATA**

A	R	T	L
1	86°08'	27'	25.24'
2	35°52'	27'	28.89'
3	103°23'	45'	51.30'
4	74°46'40"	30'	49.77'
5	104°46'40"	35'	45.43'
6	226°35'40"	30'	67.27'
7	36°52'12"	30'	10.00'
8	253°44'24"	30'	46.00'
9	90°	27'	27.00'



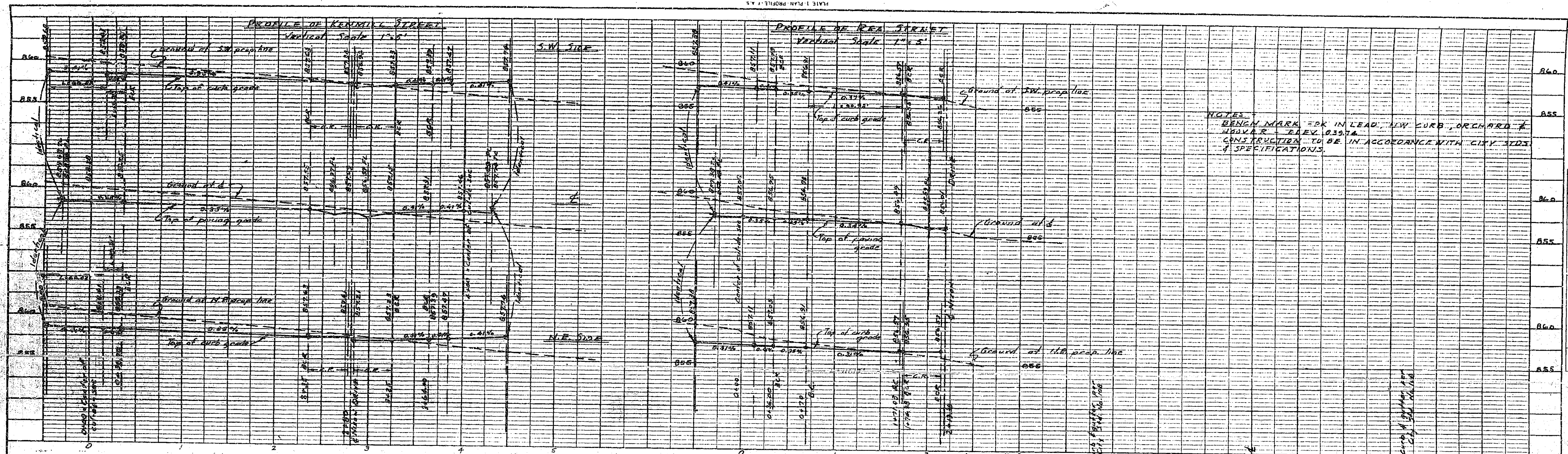
**NOTES -**  
 BENCH MARK - PK IN LEAD, NW CURB, ORCHARD  
 #4 HOOPER - ELEV. 833.74  
 SEE SHEET 2 FOR TYPICAL SECTIONS - NOTE  
 0.40' CROSS FALL TO NW ON NIXON DRIVE ONLY.

PREPARED BY ALBERT A. WEBB ASSOCIATES  
 CIVIL ENGINEERS  
 APPROVED BY [Signature] DATE 3/28/58  
 CITY OF RIVERSIDE, CALIFORNIA  
 DEPARTMENT OF PUBLIC WORKS  
**STREET PLAN & PROFILE**  
 OF  
**NIXON DRIVE**  
 IN  
**WASHINGTON MANOR**  
 HORIZ. SCALE 1"=50' VERT. SCALE 1"=5'  
 APPROVED BY [Signature]  
 DIRECTOR OF PUBLIC WORKS  
 DATE 3-25-58 SHEET 1 OF 2  
 NO. R-183

**PLAN**

DATE	
BY	
CHECKED	
APPROVED	
NO.	
PROJECT	
DATE	

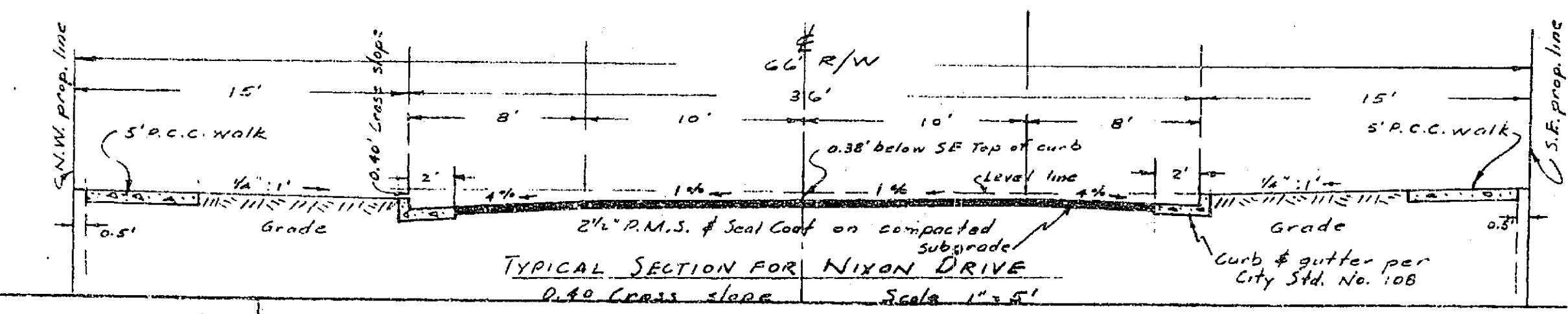
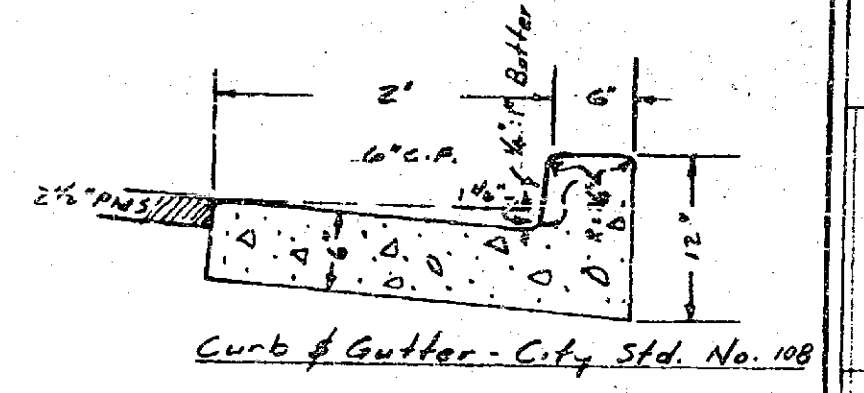
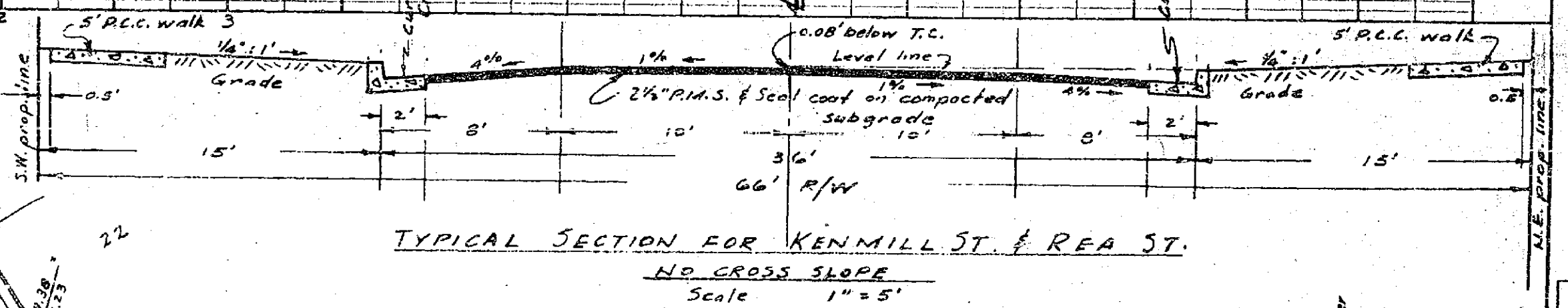
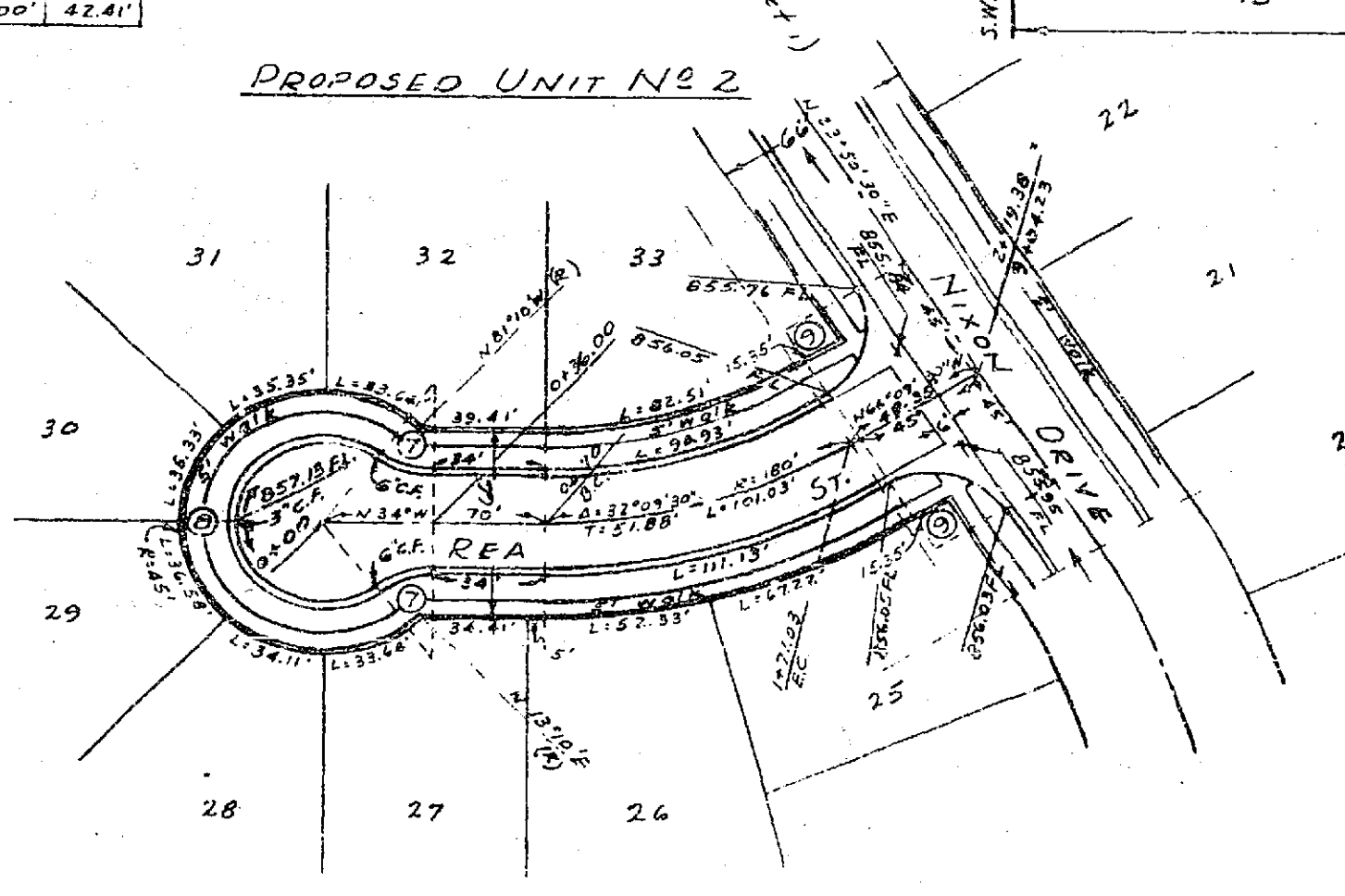
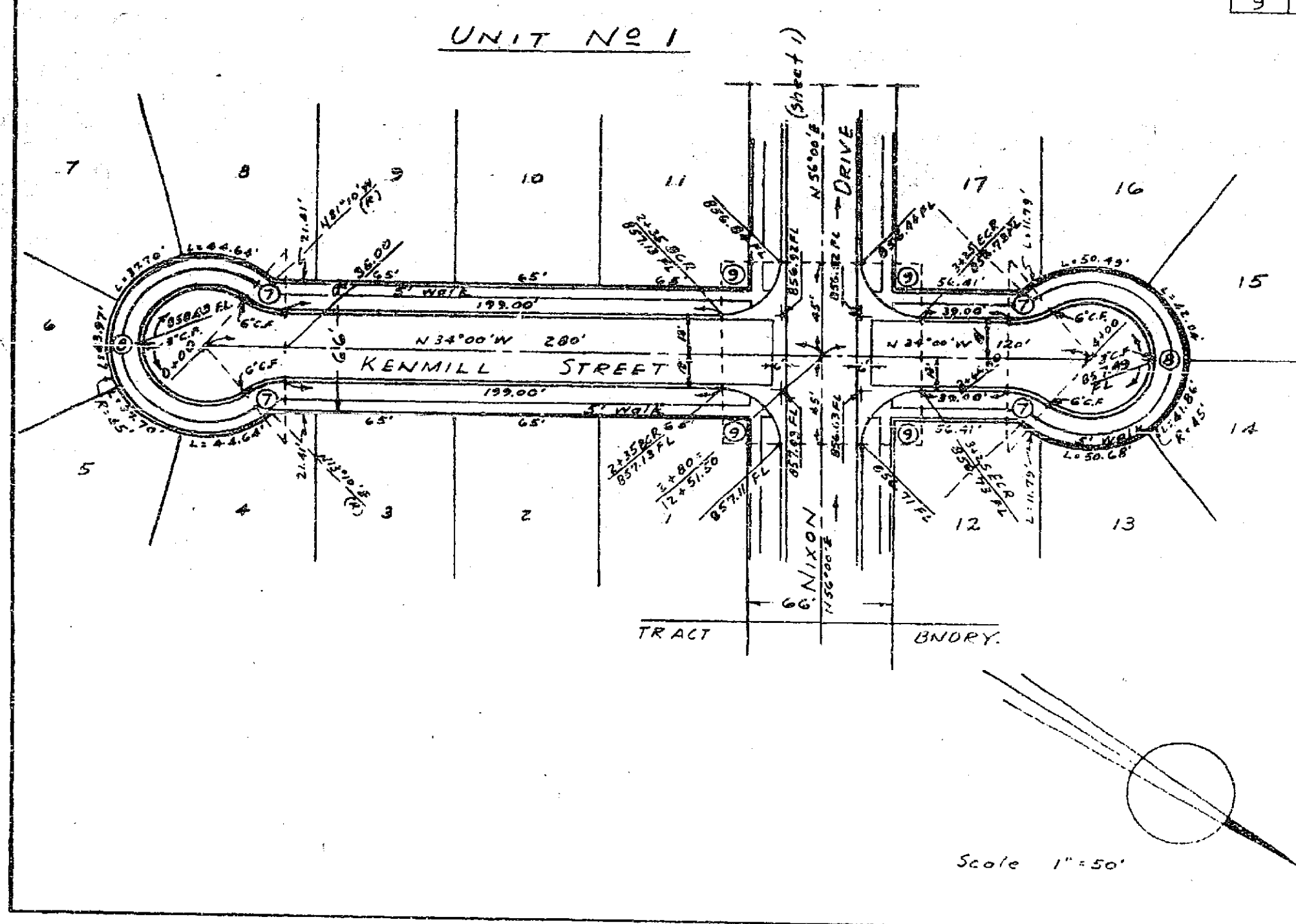




NOTES:  
 BENCH MARK = PK IN LEAD, L.W. CURB, ORCHARD &  
 HAYWARD ELEV. 0.3974.  
 CONSTRUCTION TO BE IN ACCORDANCE WITH CITY STDS  
 & SPECIFICATIONS.

CURB RETURN DATA

	A	R	T	L
7	36° 52' 12"	30'	10.00'	15.31'
8	33° 42' 24"	30'	40.00'	131.86'
9	90°	27'	27.00'	42.41'



PREPARED BY ALBERT A WEBB ASSOCIATES  
 CIVIL ENGINEERS  
 APPROVED BY [Signature] DATE 3/18/58  
 CITY OF RIVERSIDE, CALIFORNIA  
 DEPARTMENT OF PUBLIC WORKS  
 STREET PLAN & PROFILE  
 OF  
 KENMILL STREET & REA STREET  
 IN  
 WASHINGTON MANOR  
 HORIZ. SCALE 1" = 50' VERT. SCALE 1" = 5'  
 APPROVED BY [Signature]  
 DIRECTOR OF PUBLIC WORKS  
 DATE 3/29/58  
 NO. R-183  
 SHEET 2 OF 2  
 J.B. W.O. 36-160 F.B. 321