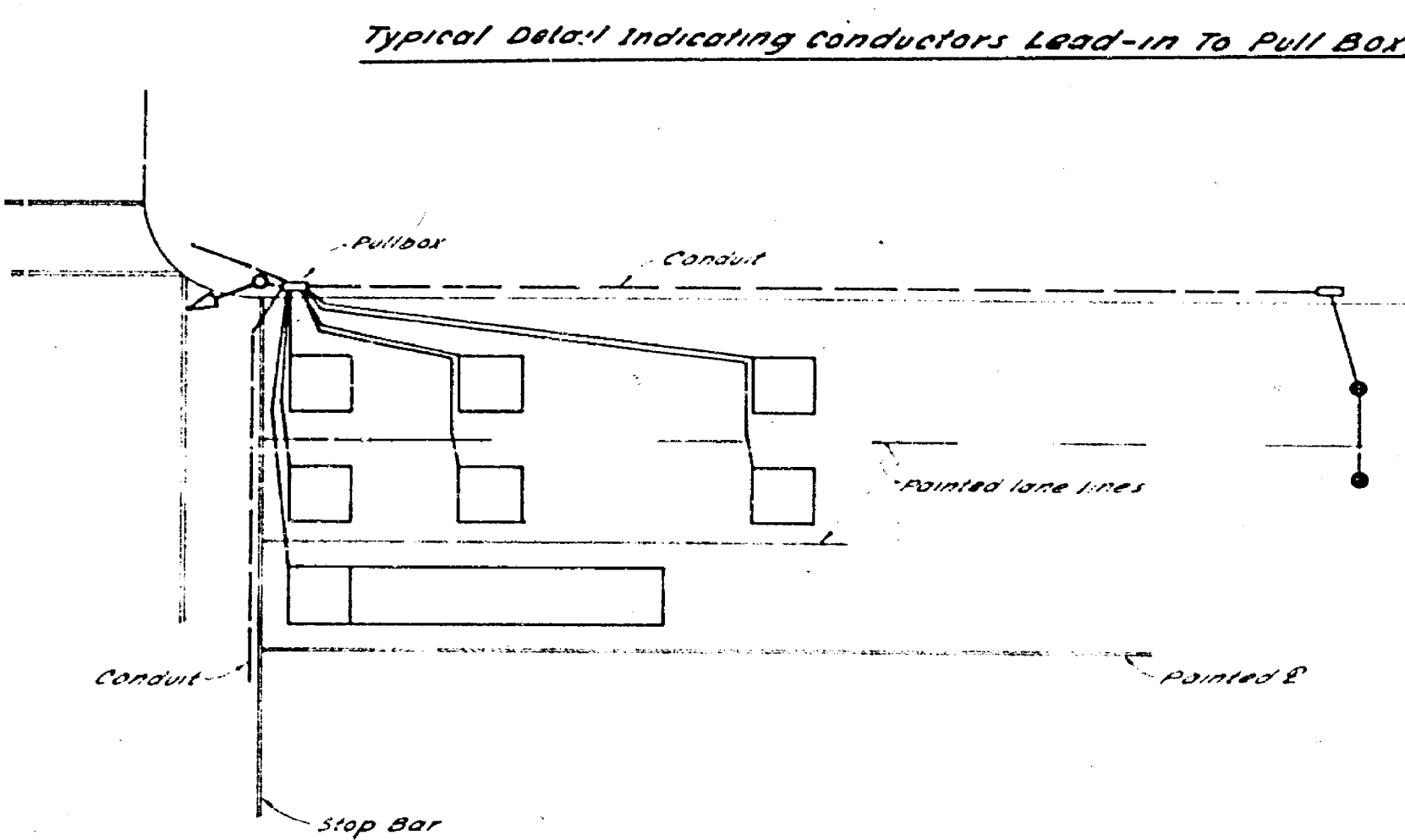
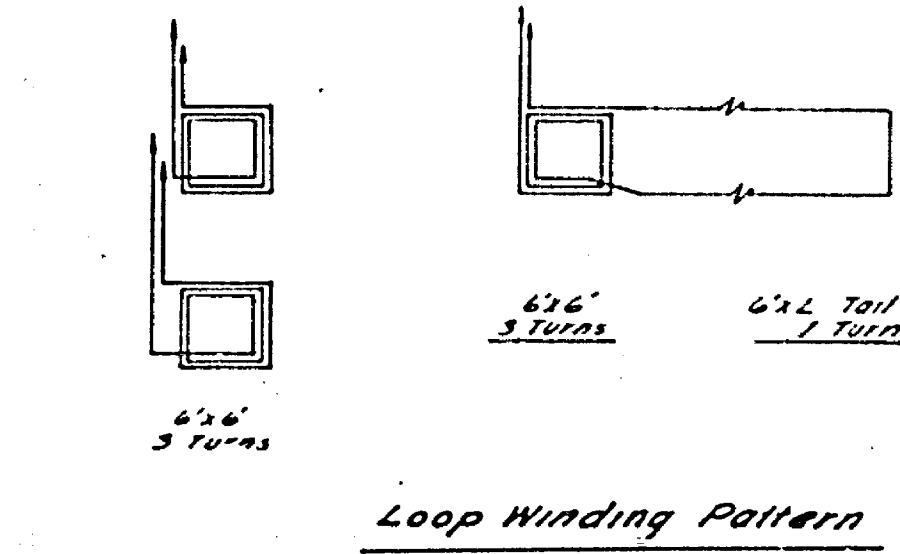
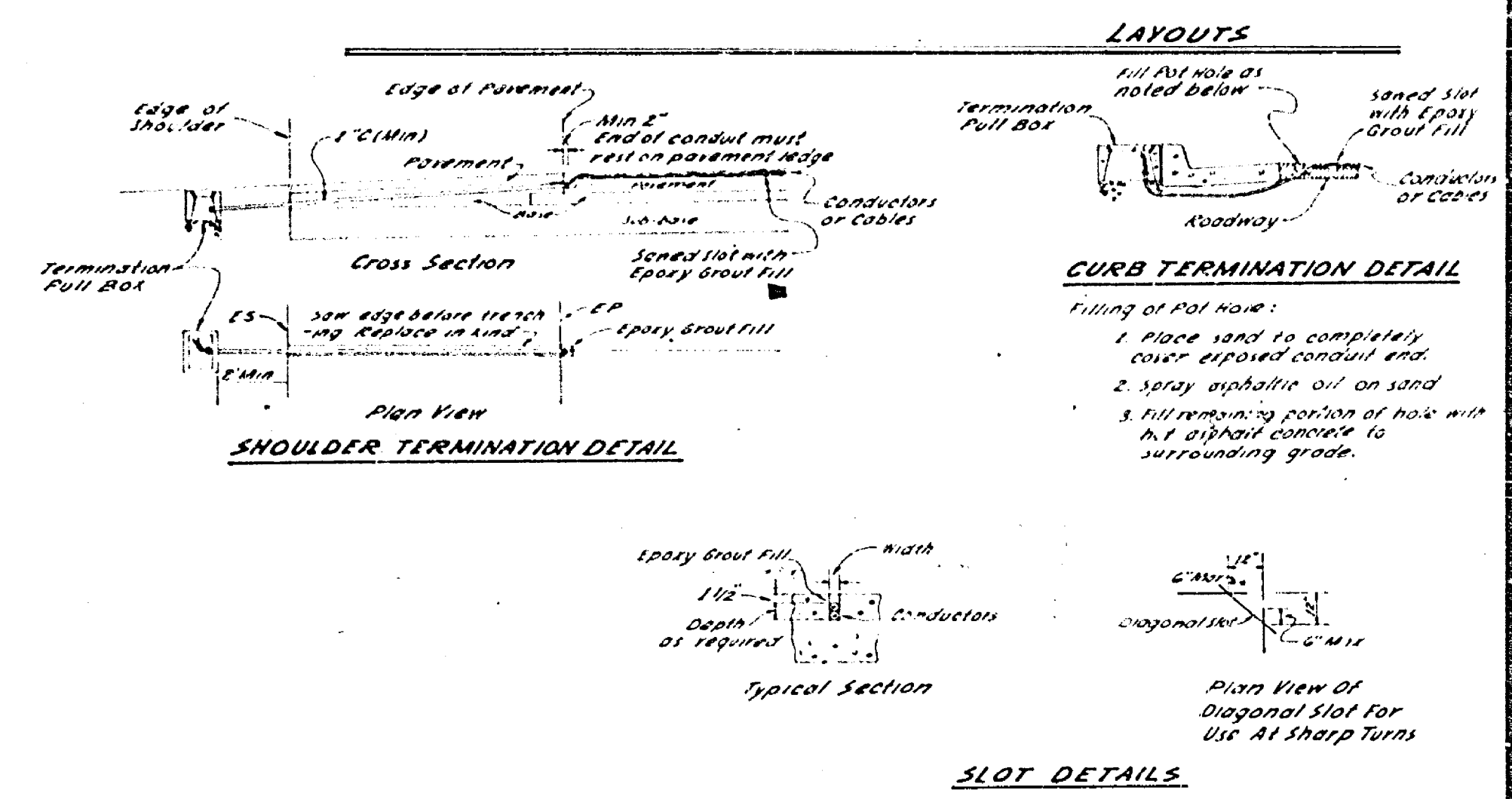


- #### Symbols
- Sensor unit reference code, indicating assigned lane number and phase. Code to correspond with conductor labeling. Roman numeral indicates type of installation as shown above.
 - Termination pullboxes are numbered (S) here where used for detector leads.
 - Overall length - zone of detection.
 - 6'x6' detector loop configuration.
 - 6'x6' head with 6'x specific length tail configuration.
 - Magnetometer sensing element.
 - Reference distance between stop bar and detector or between detectors as indicated on plans.

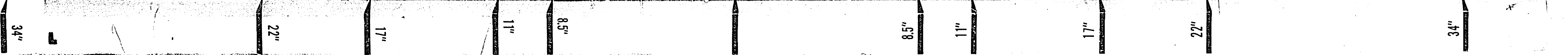


- #### Notes:
1. The inductive loop detector configuration shown on plans are minimum requirements, however, the actual configuration with regard to size of loop and number of turns shall be installed in accordance to the manufacturer's recommendations.
 2. Loop or magnetometer detector location will be designated as the field by the Engineer or his representative.
 3. Effective lane width (ELW) will be shown on plans when it is not to be striped.
 4. A minimum of 4 feet will be maintained between loops of adjacent lanes.
 5. If terminal pull box is on opposite side of roadway, run connecting slots on that side of detector installation.
 6. Loop or magnetometer detectors shall be installed in the presence of the Engineer or his representative.

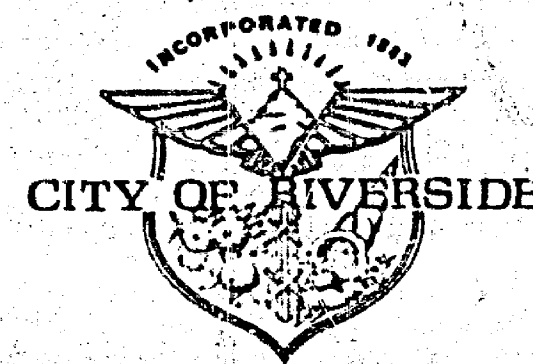


- #### Magnetometer Sensing Element Installation
1. Shall be installed in accordance with the manufacturer's recommendations.
 2. Magnetometer lead-in cable, to controller, shall comply with the specification described in the Special Provisions.
- #### Loop and Magnetometer Installation Procedure
- Installation shall be in accordance with the specifications described in the Special Provisions.

CITY OF RIVERSIDE, CALIFORNIA PUBLIC WORKS DEPARTMENT		ACCOUNT NO. R-1852	
APPROVED BY PRINCIPAL ENGINEER DATE		APPROVED BY DIRECTOR OF PUBLIC WORKS DATE	
DESIGNED BY		DRAWING NUMBER X-501	
DRAWN BY JMM		SHEET 1 OF 1	
CHECKED BY		SCALE: None	



RIVERSIDE



CALIFORNIA

PUBLIC WORKS DEPARTMENT

INDIANA AVENUE WIDENING MARY TO ARLINGTON

PROJECT LENGTH: 2400'

T.I. = 7.5 & 8.0

EXISTING UNDERGROUND UTILITIES:

SANITARY SEWER	6" S	TELEPHONE CONDUIT	T
WATER LINE	6" W	ELECTRICAL CONDUIT	E
STORM DRAIN	24" S.D.	STREET LIGHTING	SL
GAS LINE	3" G	TRAFFIC SIGNAL	TS
IRRIGATION LINE	20" IRR	FIRE ALARM	F

EXISTING TOPOGRAPHY:

- BLOCK WALL
- BOARD FENCE
- WIRE FENCE
- CHAIN LINK FENCE
- POLE & GUY ANCHOR
- ELECTRIC POLE
- JOINT USE POLE
- PULL BOX
- TRAFFIC SIGN
- PARKING METER
- GAS METER
- MAIL BOX
- WALK-DON'T WALK
- PEDESTRIAN SIGNAL
- TOP OF SLOPE
- TOE OF SLOPE
- DIRECTION OF FLOW
- PEDESTRIAN PUSH BUTTON
- RAILROAD TRACKS
- RAILROAD SIGNAL
- STREET LIGHT & TRAFFIC SIGNAL ON MAST ARM
- STREET LIGHT (UPRIGHT)
- STREET LIGHT
- TRAFFIC SIGNAL
- TRAFFIC SIGNAL ON MAST ARM
- TRAFFIC SIGNAL CONTROLLER
- TRAFFIC SIGNAL PRESSURE DETECTOR
- TRAFFIC SIGNAL LOOP DETECTOR
- CITRUS TREE
- DECIDUOUS TREE
- PALM TREE
- SHRUBBERY
- TREE STUMP

CONSTRUCTION MATERIALS:

- CONCRETE
- ASPHALT
- EDGE OF PAVEMENT
- BUILDING
- UNDERGROUND STRUCTURE
- OVERHANGING STRUCTURE

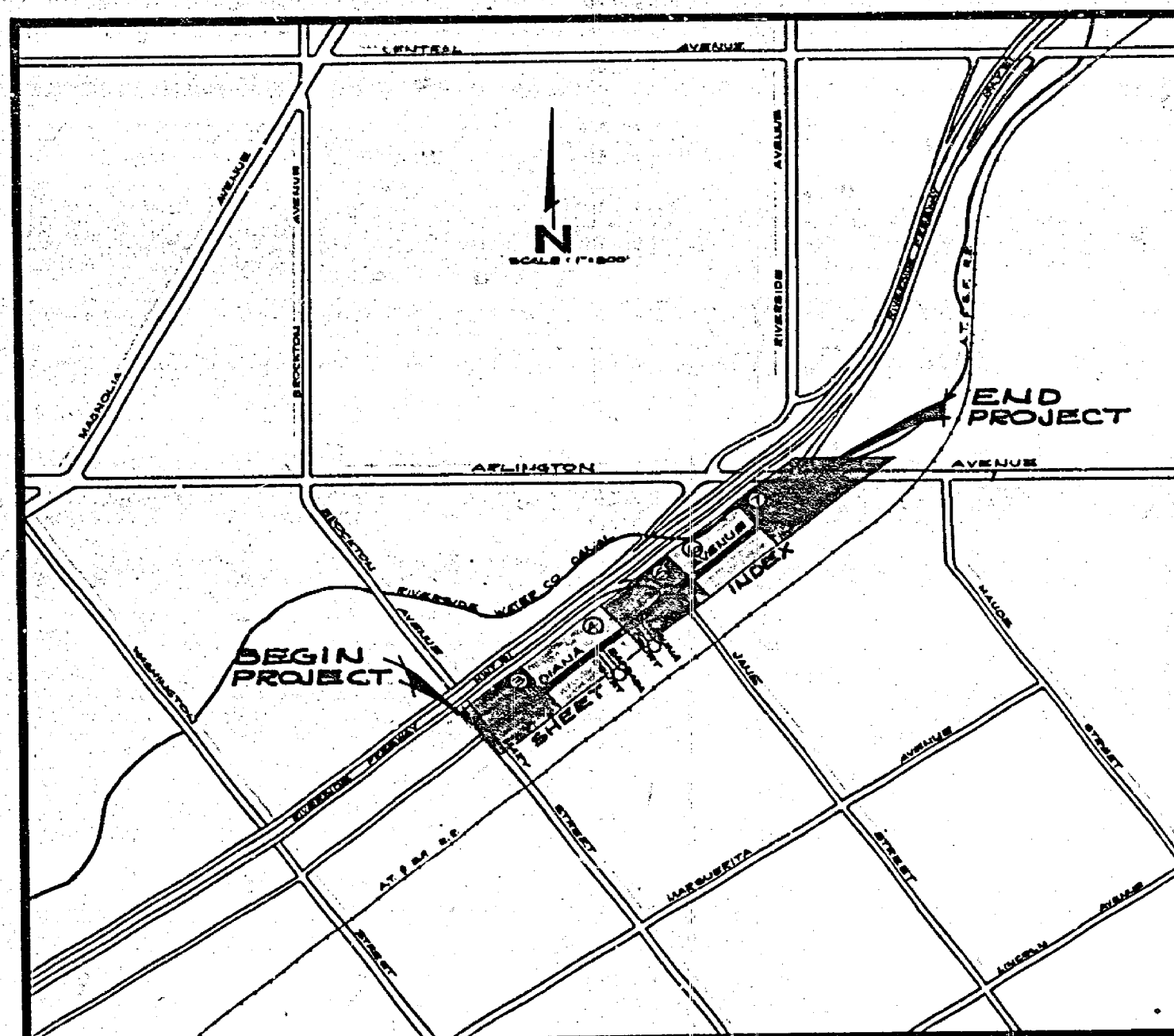
SPECIAL CONSTRUCTION NOTES

- OVERLAY EXISTING A.C. PAVEMENT WITH A VARIABLE THICKNESS OF ASPHALT CONCRETE. MINIMUM OVERLAY TO BE 3/4" THICK.
- CONSTRUCT STRUCTURAL SECTION. SEE STRUCTURAL SECTION SCHEDULES BELOW.
- REPLACE OR REGRADE DRIVEWAY TO GRADES, ALIGNMENT AND MATERIAL SHOWN ON PLAN. A.C. 2" THICK (MIN.), P.C.C. 6" THICK.
- REMOVE ENTIRE TREES. CLASS I: SHOWN ON PLAN. CLASS II: 6" TO 18" DIA.; CLASS III: OVER 18" TO 36" DIA.; CLASS IV: OVER 36" DIA.
- TRANSPLANT PALM TREES TO LOCATION INDICATED ON PLAN THUS, 300' OR WHERE DIRECTED BY THE PARK DEPARTMENT. SIZE CLASSES ARE THE SAME AS FOR TREE REMOVAL.
- NUMBERS ABOVE 100 SHOWN IN ○ ON THE PLAN REFER TO THE RESPECTIVE STANDARD DRAWING NUMBERS AND SHALL BE CONSTRUCTED ACCORDINGLY UNLESS MODIFICATIONS ARE NOTED ON PLAN OR THIS SHEET BELOW. ANY NUMBER SHOWN BELOW THE STANDARD DRAWING NUMBER INDICATES THE SPECIFIC ALTERNATE TO BE CONSTRUCTED.
- CONSTRUCT TREE WELL PER DETAIL ON SHEET 2. STATIONING SHOWN ON PLAN.
- REMOVE EXISTING A.C. AND GRADE PER TYPICAL SECTIONS AND PLAN. SAWCUT EXISTING A.C. AT THE R/W LINE.
- REMOVE EXISTING CURB AND A.C. RESTORE SURFACE TO MATCH ADJACENT PAVING AS DIRECTED BY THE INSPECTOR.
- ENCASE SEWER LATERALS WITH 3LF ENCASEMENT PER CWD STD. 021, 022 & 023 WHEN CROSSING WATER MAIN.
- PROPOSED STREET LIGHT

STRUCTURAL SECTION SCHEDULE

STATION	LEFT SIDE	RIGHT SIDE
10+00 2+74.5 TO 0+00	0.35' AC OVER 1.13' DG. OR 0.32' AC OVER NATIVE SOIL	0.35' AC OVER 1.13' DG. OR 0.32' AC OVER NATIVE SOIL
10+00 0+00 TO 15+00	NONE	0.35' AC OVER 1.13' DG. OR 0.32' AC OVER NATIVE SOIL
15+00 15+00 TO 24+67	0.35' AC OVER 1.13' DG. OR 0.32' AC OVER NATIVE SOIL	0.35' AC OVER 1.2' DG. OR 0.32' AC OVER NATIVE SOIL
0+00 TO 1+33.5 CONNECTOR	0.35' AC OVER 1.13' DG. OR 0.32' AC OVER NATIVE SOIL	0.35' AC OVER 1.2' DG. OR 0.32' AC OVER NATIVE SOIL

*T.I. = 7.5 **T.I. = 8.0



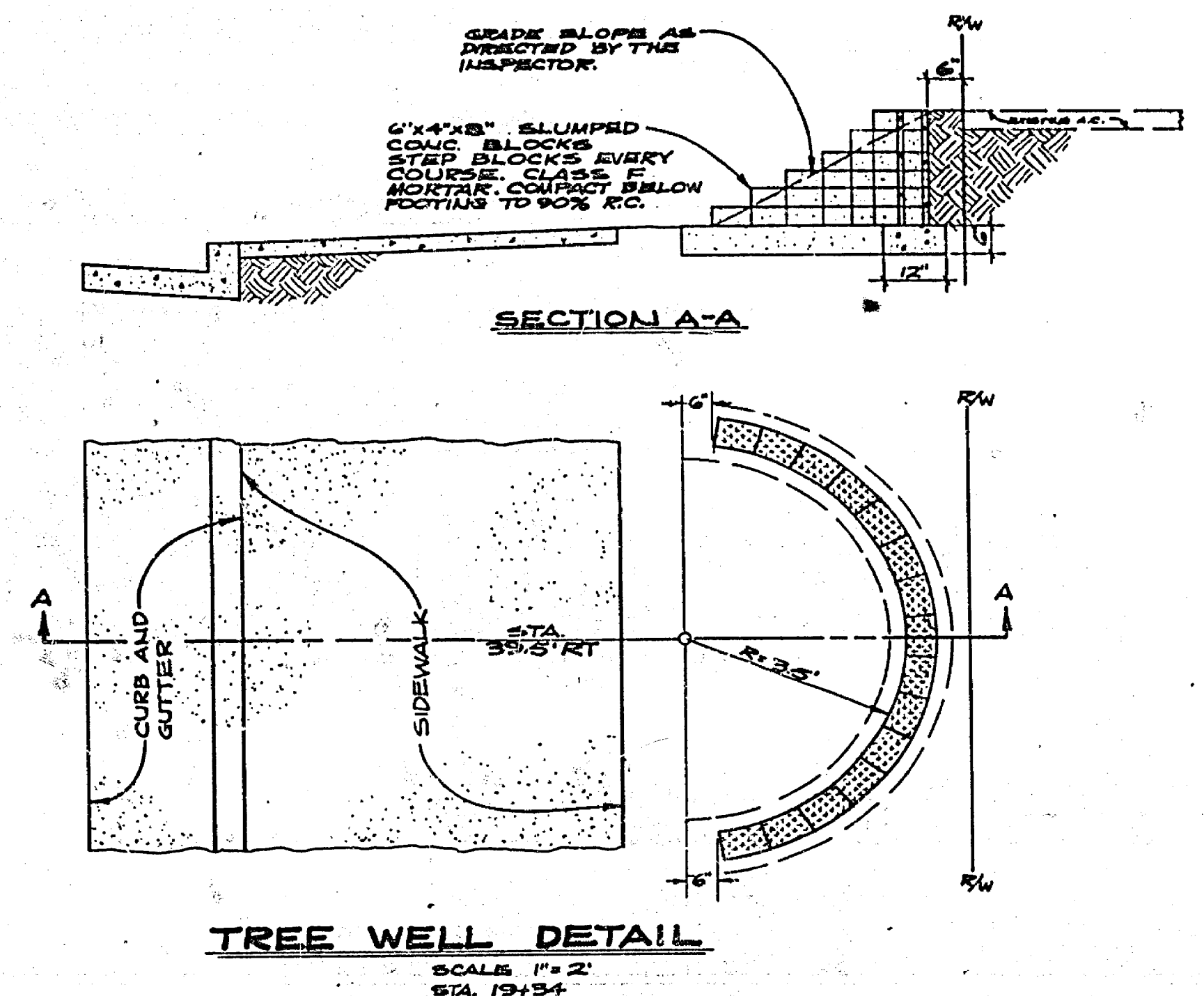
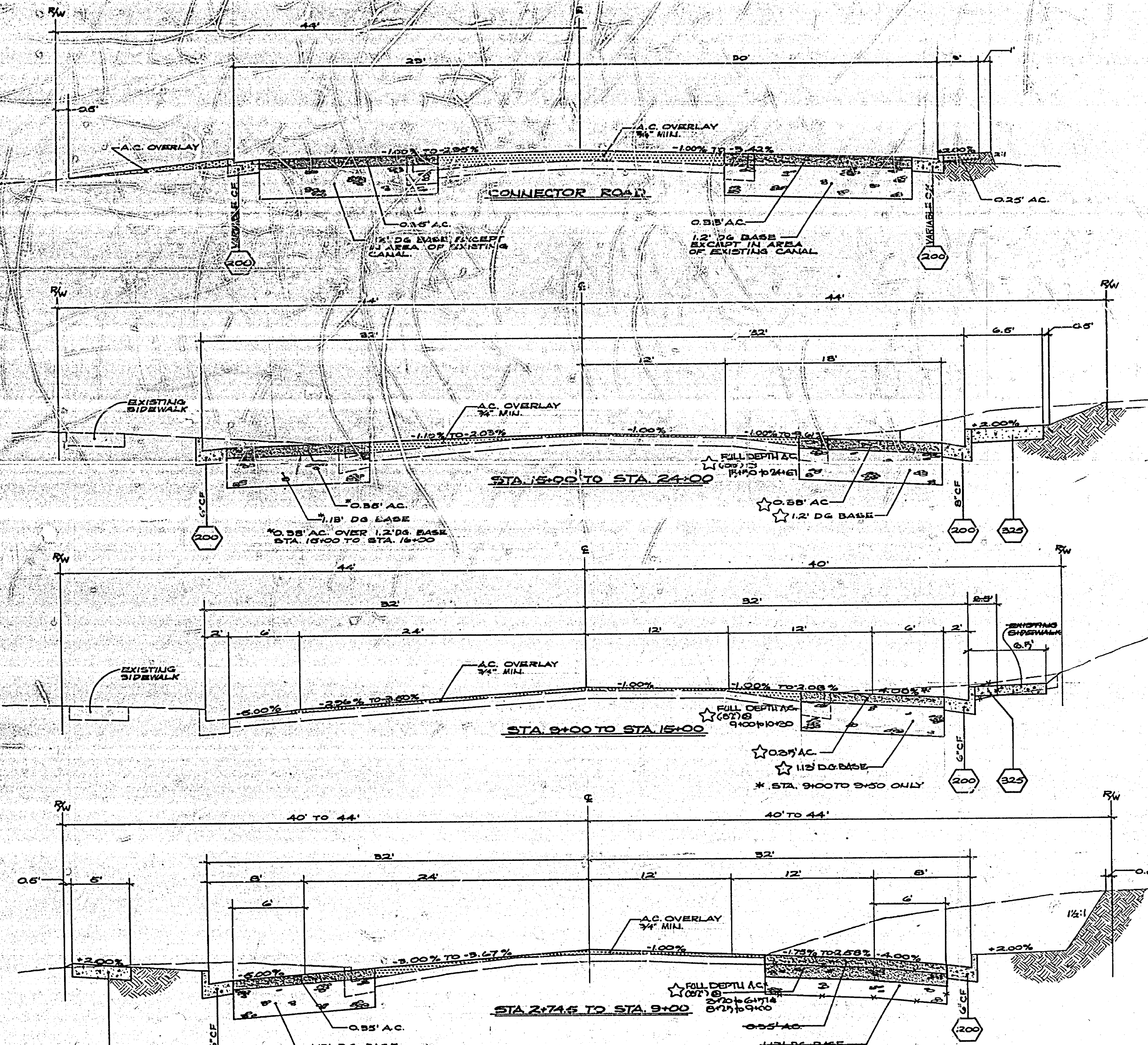
LOCATION MAP

GENERAL CONSTRUCTION NOTES

- WHERE NEW CONSTRUCTION IS INDICATED, REMOVE EXISTING CURB, GUTTER AND SIDEWALK.
- TRAFFIC SIGNS REMOVED DURING CONSTRUCTION SHALL BE SALVAGED BY THE CONTRACTOR AND RELOCATED AS DIRECTED BY THE INSPECTOR.
- WHERE NEW SIDEWALK OR DRIVEWAY MEETS OR REPLACES EXISTING SIDEWALK OR DRIVEWAY, JOINTS SHALL BE MATCHED TO EXISTING.
- TRANSITION NEW CONSTRUCTION TO MEET EXISTING FACILITIES AS DIRECTED BY THE INSPECTOR, EXCEPT WHERE SHOWN ON PLAN.
- ALL ELEVATIONS SHOWN ON PLAN SHALL BE STAKED IN THE FIELD.
- THE EXISTING SANITARY SEWER MAINS VARY IN DEPTH FROM 6.5' TO 7.0', 15' TO EXISTING PAVEMENT GRADE.
- EXACT LOCATIONS AND DEPTH OF UNDERGROUND UTILITIES ARE UNKNOWN. THE LOCATIONS AND DEPTHS SHOWN ON THIS PLAN ARE FROM UTILITY RECORDS. THE CONTRACTOR IS REQUIRED TO TAKE DUE PRECAUTIONARY MEASURES TO LOCATE AND PROTECT ALL UNDERGROUND FACILITIES WHETHER OR NOT SHOWN ON PLAN. WHERE THE COVER TO THE TOP OF A UTILITY IS UNKNOWN THE UTILITY IS SHOWN IN THE PROFILE. IF COVER IS KNOWN THE UTILITY IS SHOWN IN THE PROFILE BY: (1) UTILITY NAME, BUT IS NOT EXPECTED TO CONFLICT WITH IMPROVEMENTS.
- WHERE CONSTRUCTION IS SHOWN OUTSIDE OF STREET RIGHT OF WAY, RIGHT OF ENTRIES HAVE BEEN OBTAINED.
- ALL UTILITIES IN CONFLICT WITH CONSTRUCTION WILL BE RELOCATED BY OTHERS PRIOR TO THE START OF CONSTRUCTION.

☆ AS BUILT 7-14-77 JLV

CITY OF RIVERSIDE PUBLIC WORKS DEPARTMENT		Indiana Avenue Widening Mary to Arlington		R-1852 SHEET 1 OF 10
APPROVED BY PRINCIPAL ENGINEER	APPROVED BY PUBLIC WORKS DIRECTOR	DESIGNED BY: JLV DRAWN BY: GEL CHECKED BY: JLV	DATE: 2-14-77	ACCOUNT NO. 87 586 C FILE NO.



NEW TRAFFIC SIGN LOCATIONS

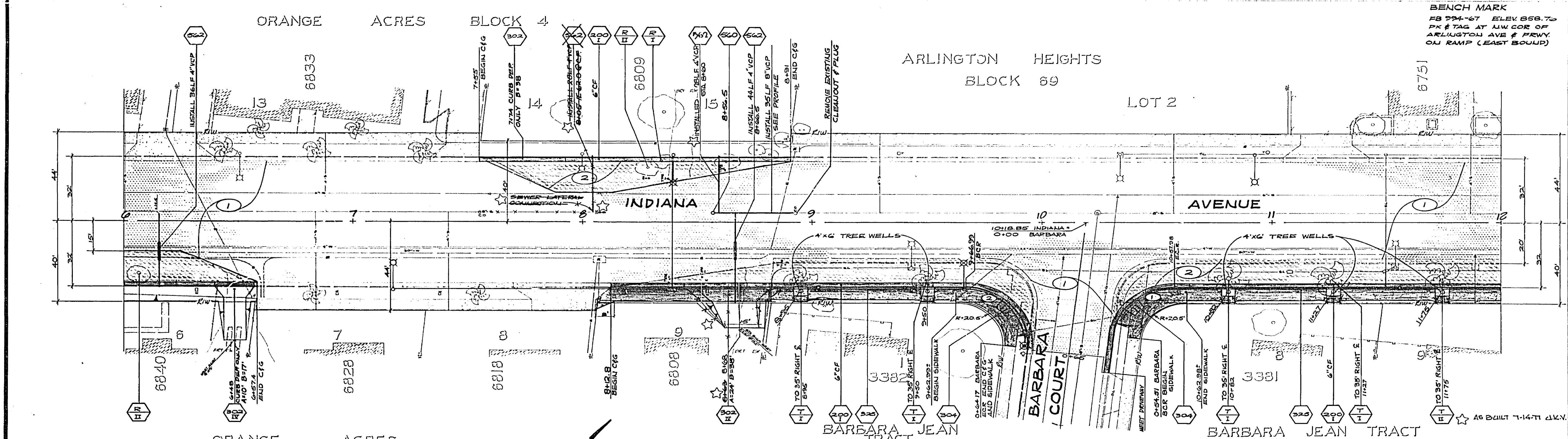
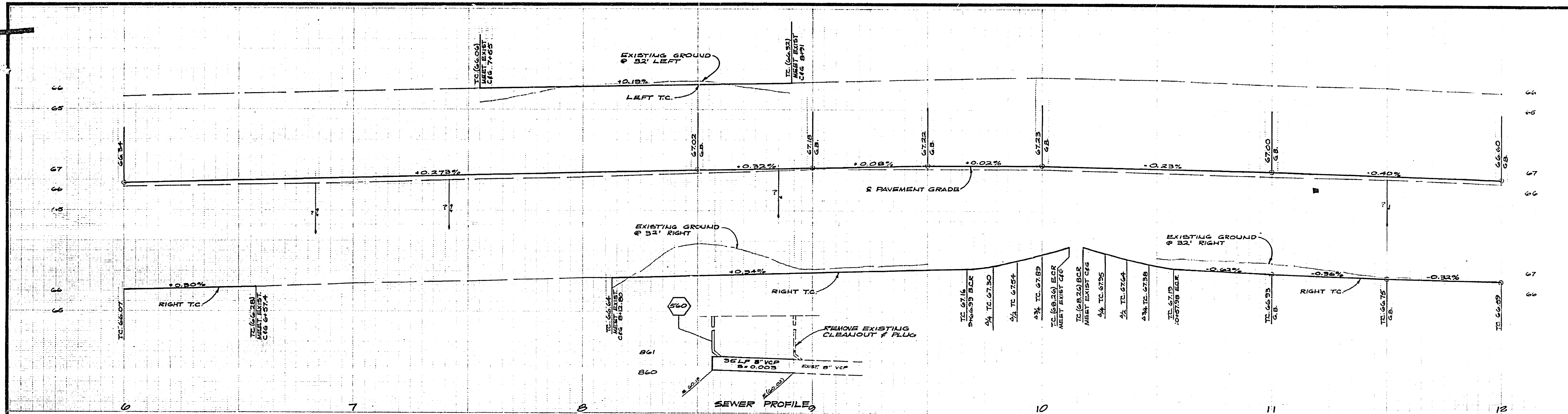
LEFT SIDE	RIGHT SIDE		
STATION	TYPE	STATION	TYPE
15+77	R2B (S) (RT)	16+57	R2B (S) (LT)
17+20	R2B (S) (2)	18+56	R2B (S) (2)
19+20	R2B (S) (2)	20+55	R2B (S) (2)
21+00	R2B (S) (2)*	22+57	R2B (S) (2)
23+00	R2B (S) (2)	24+64	R2B (S) (RT)*
0+76 CONNECTOR	R2B (S) (LT)*	0+55 CONNECTOR	R6I (SPECIAL)

* MOUNT SIGN ON STREET LIGHT POLE

TYPICAL SECTIONS

SCALE: HORIZ. 1" = 5'
 VERT. 1" = 2'

CITY OF RIVERSIDE PUBLIC WORKS DEPARTMENT		Indiana Avenue Widening Mary to Arlington		ACCOUNT NO. 20 276 226 OF
APPROVED BY: <i>[Signature]</i> TRAFFIC DIVISION		APPROVED BY: <i>[Signature]</i> PUBLIC WORKS DIRECTOR		R-1852
DESIGNED BY: CWS DRAWN BY: BRW CHECKED BY: DF		DATE: 2-14-77		SHEET 2 OF 10 FILE NO.



BENCH MARK
 FB 294-67 ELEV. 858.70
 PK & TAG AT NW COR OF
 ARLINGTON AVE & FRWY.
 ON RAMP (EAST BOUND)

	Δ	R	T	L
1	89°52'16"	27'	24.26'	39.02'
2	56°07'46"	27'	30.05'	46.50'

NO.	REVISIONS	APP.	DATE

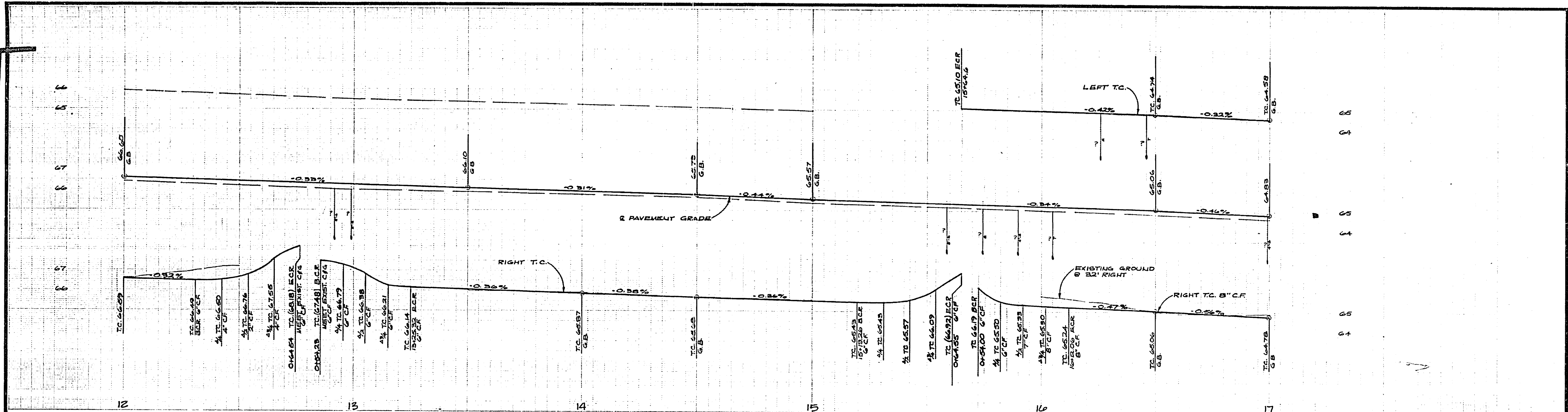
CITY OF RIVERSIDE
 PUBLIC WORKS DEPARTMENT

APPROVED BY: [Signature]
 PUBLIC WORKS DIRECTOR

DATE: 11-17-77

Indiana Avenue
 Widening
 Mary to Arlington

ACCOUNT NO. 30 025 356 OF
R-1852
 SHEET 4 OF 10
 FILE NO.

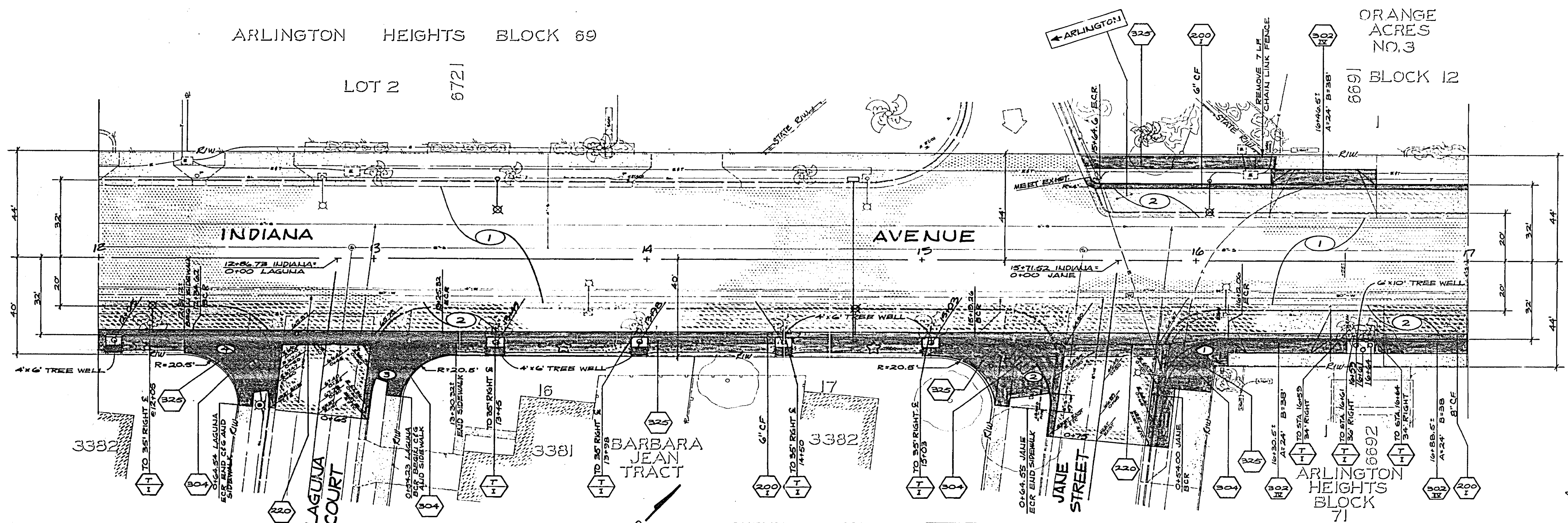


ARLINGTON HEIGHTS BLOCK 69

LOT 2 6721

ORANGE ACRES NO. 3
BLOCK 12

BENCH MARK
FB 994-67 FLV B.S. 74
PK & TAG AT N.W. COR. OF
ARLINGTON AVE. & FEWY.
ON RAMP. (EAST BOUND)



CURVE DATA				
Station	R	Δ	L	Δ/2
13+27.30	27'	24.09°	30.93'	12.465°
14+32.30	27'	30.27°	42.43'	15.115°
15+28.20	27'	24.09°	30.93'	12.465°
16+31.40	27'	30.27°	42.43'	15.115°

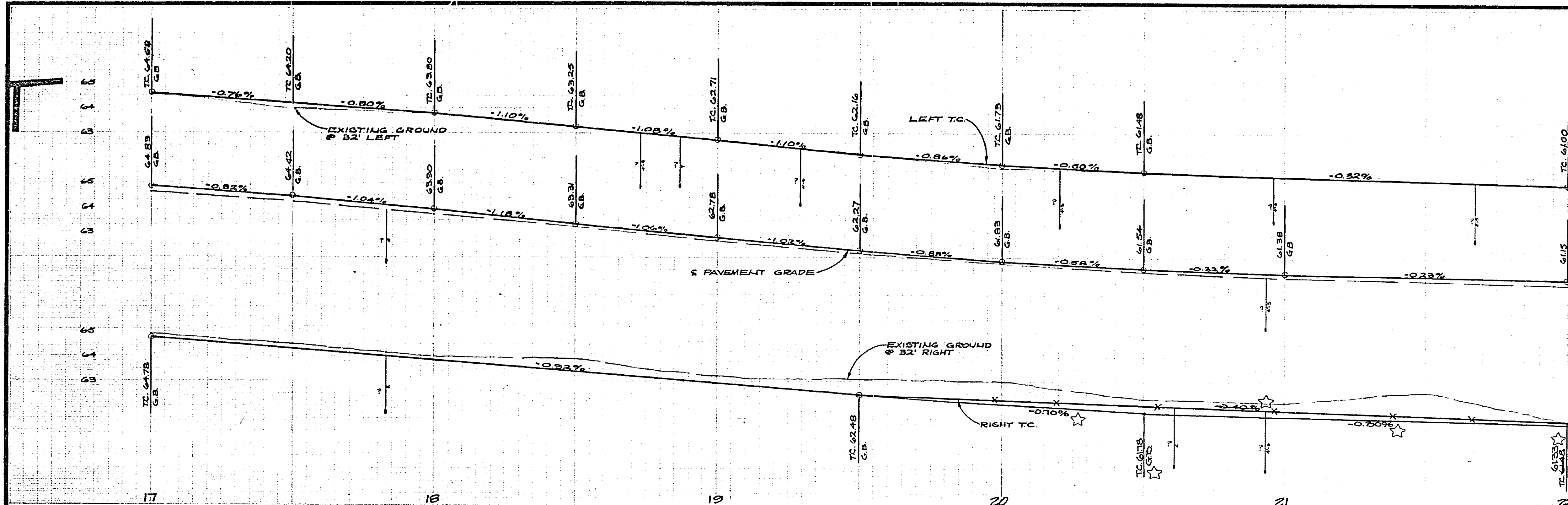
CITY OF RIVERSIDE
PUBLIC WORKS DEPARTMENT

APPROVED BY: [Signature]
PRINCIPAL ENGINEER: [Signature]
DATE: 2-14-77

Indiana Avenue
Widening
Mary to Arlington

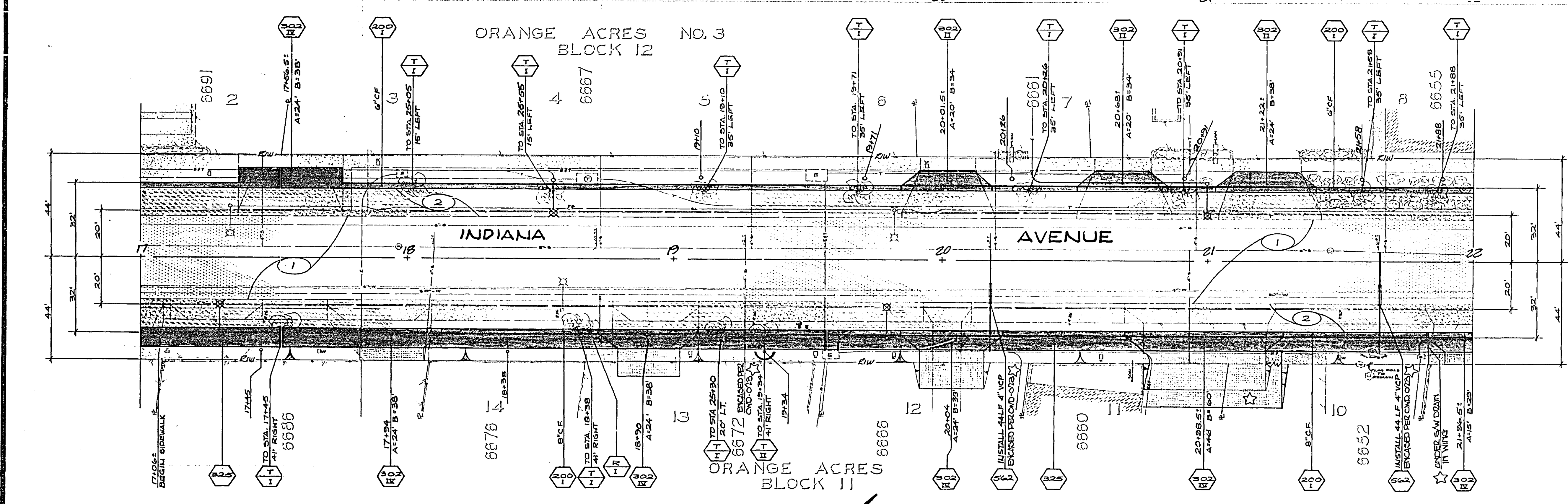
HORIZ. SCALE: 1" = 20'
VERT. SCALE: 1" = 2'

ACCOUNT NO. 30 672 354 07
R-1852
SHEET 5 OF 10
FILE NO.



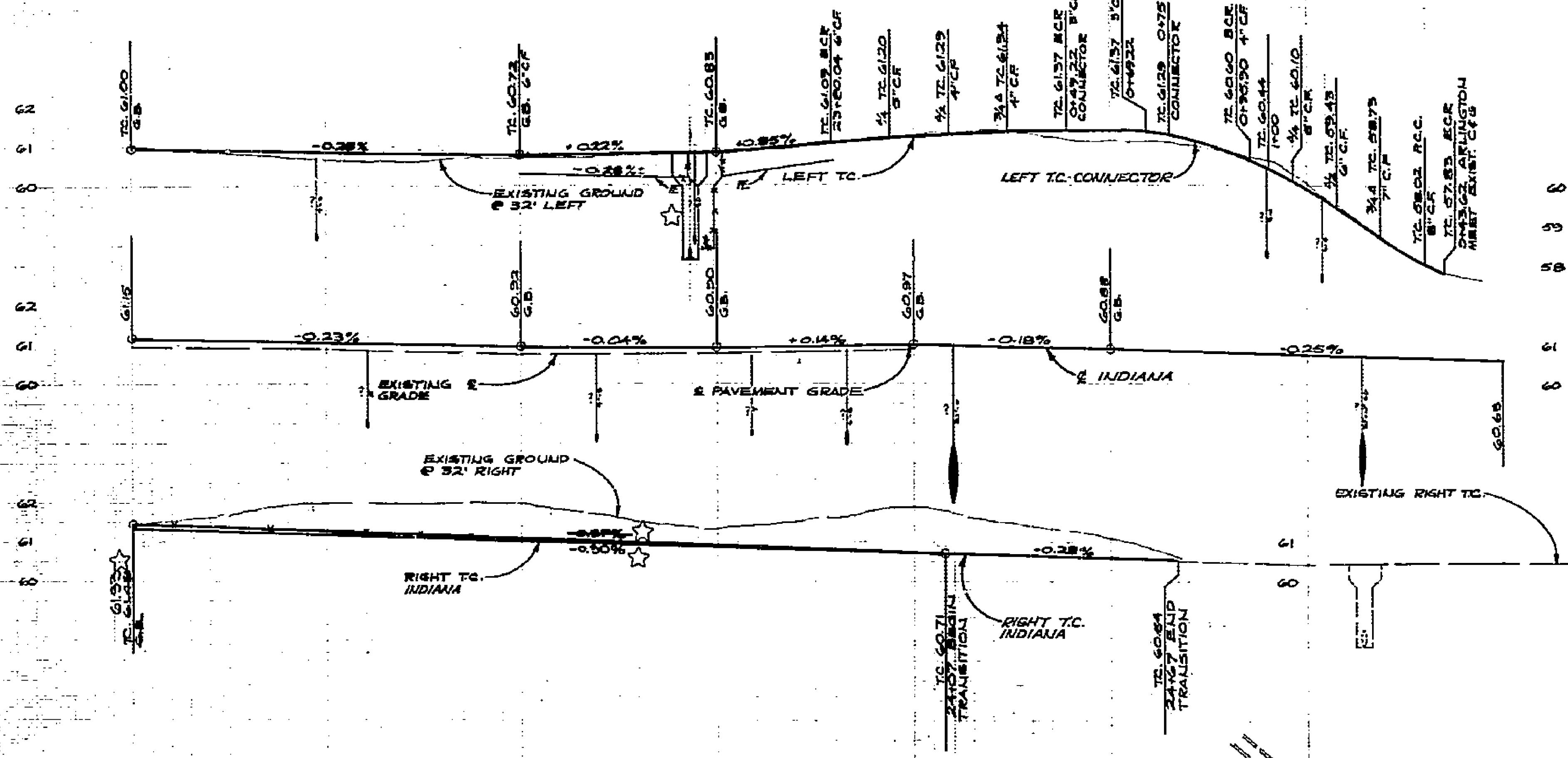
63
62
61
60
59
58
57
56
55
54
53
52
51
50
49
48
47
46
45
44
43
42
41
40
39
38
37
36
35
34
33
32
31
30
29
28
27
26
25
24
23
22
21
20
19
18
17

BENCH MARK
FB 994-67 ELEV. 856.76
PK # TAG AT N.W. COR. OF
ARLINGTON AVE & HWY
ON RAMP (EAST BOUND)



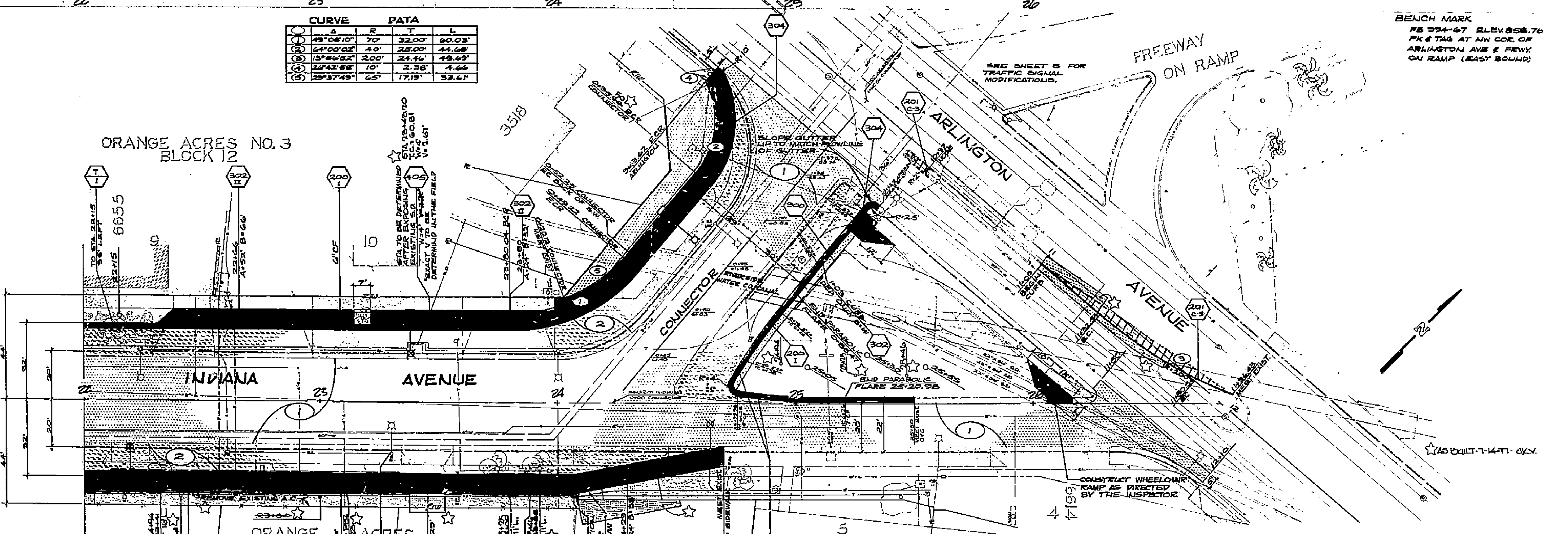
AS BUILT 7-14-77 J.W.

CITY OF RIVERSIDE PUBLIC WORKS DEPARTMENT		Indiana Avenue Widening Mary to Arlington		ACCOUNT NO. 80 678 30-07 R-1852 SHEET 6 OF 10 FILE NO.
APPROVED BY PRINCIPAL ENGINEER PUBLIC WORKS DEPARTMENT TRAFFIC DIVISION JULY 7, 1977	APPROVED BY PUBLIC WORKS DIRECTOR DATE 7-1-77	DESIGNED BY: C.W.S. DRAWN BY: G.W. CHECKED BY: P.E. D.C.	HORIZ. SCALE: 1" = 20' VERT. SCALE: 1" = 2'	



CURVE DATA			
Δ	R	T	L
48°06'10"	70'	32.00'	60.03'
64°00'02"	40'	25.00'	44.68'
15°04'52"	200'	24.46'	49.69'
24°42'58"	10'	2.38'	4.66'
29°37'49"	65'	17.19'	33.61'

ORANGE ACRES NO. 3
BLOCK 12



BENCH MARK
 NB 994-67 ELEV. 858.76
 PK # TAG AT NW COR. OF
 ARLINGTON AVE & FEWY
 ON RAMP (EAST BOUND)

ORANGE ACRES
BLOCK 12

CITY OF RIVERSIDE
PUBLIC WORKS DEPARTMENT

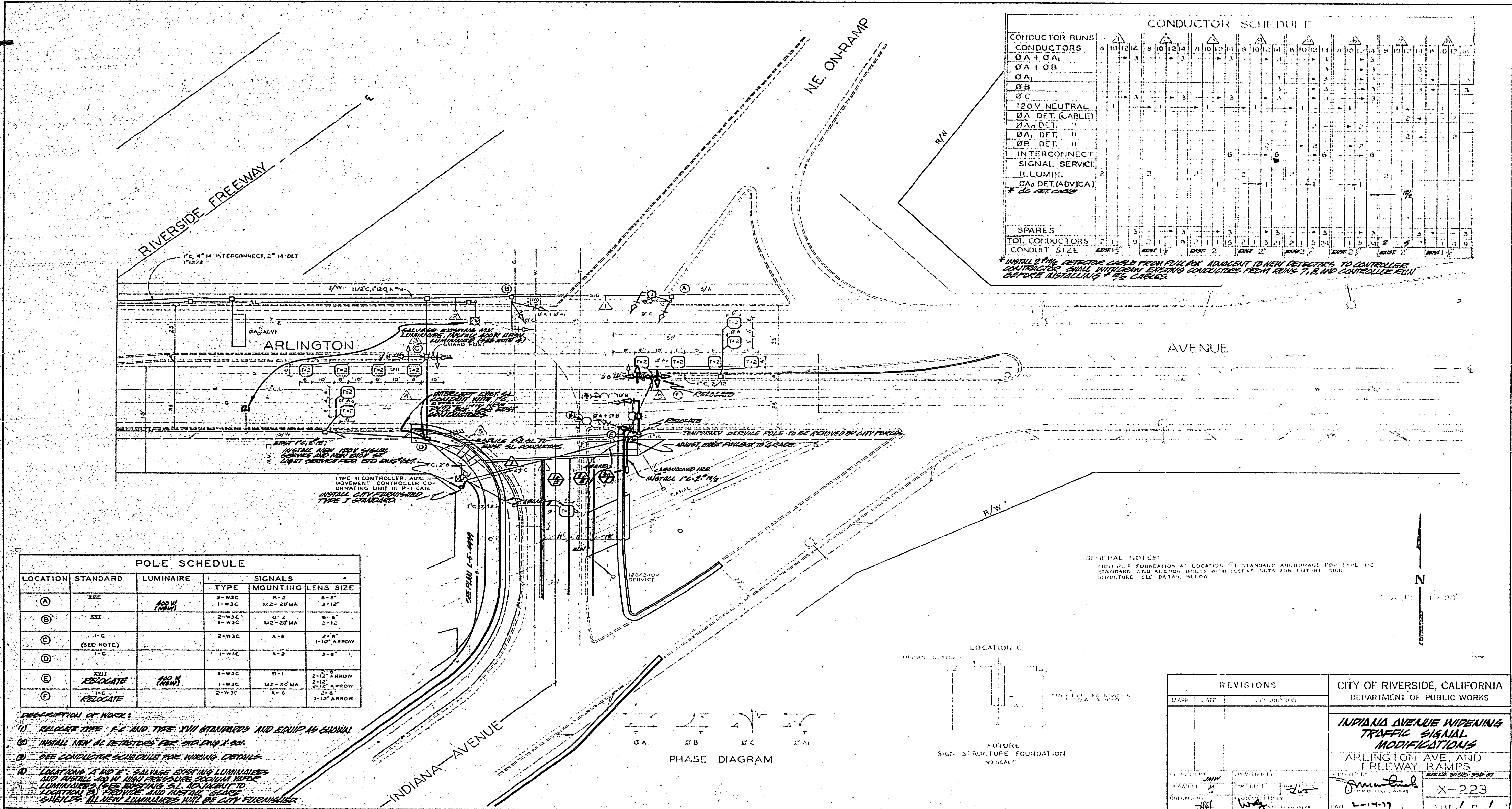
Indiana Avenue
Widening
Mary to Arlington

ACCOUNT NO. 20-475 534 07
R-1852
 SHEET 7 OF 10
 FILE NO.

MARK	REVISIONS	APP. DATE

DESIGNED BY: GUS DRAWN BY: SEUL CHECKED BY: DE DZ
 APPROVED BY: [Signature]
 TRAFFIC DIVISION
 CHIEF P. W. ENGINEER
 DATE: 2-2-53

HORIZ. SCALE: 1" = 20'
 VERT. SCALE: 1" = 2'



CONDUCTOR SCHEDULE

CONDUCTOR RUNS	1	2	3	4	5	6	7	8	9	10	11	12	13	14	15	16	17	18	19	20	21	22	23	24	25	26	27	28	29	30		
CONDUCTORS	8	10	12	14	8	10	12	14	8	10	12	14	8	10	12	14	8	10	12	14	8	10	12	14	8	10	12	14	8	10	12	14
Ø A + Ø A1																																
Ø A1 Ø B																																
Ø A1																																
Ø B																																
Ø C																																
120V NEUTRAL																																
Ø A DET. (CABLE)																																
Ø A DET. II																																
Ø B DET. II																																
INTERCONNECT SIGNAL SERVICE																																
ILLUMIN.																																
Ø A DET. (ADV.)																																
* Ø C DET. (CABLE)																																
SPARES																																
TOT. CONDUCTORS	7	1	2	1	1	1	1	1	1	1	1	1	1	1	1	1	1	1	1	1	1	1	1	1	1	1	1	1	1	1	1	
CONDUIT SIZE	1 1/2"	1 1/2"	1 1/2"	1 1/2"	1 1/2"	1 1/2"	1 1/2"	1 1/2"	1 1/2"	1 1/2"	1 1/2"	1 1/2"	1 1/2"	1 1/2"	1 1/2"	1 1/2"	1 1/2"	1 1/2"	1 1/2"	1 1/2"	1 1/2"	1 1/2"	1 1/2"	1 1/2"	1 1/2"	1 1/2"	1 1/2"	1 1/2"	1 1/2"	1 1/2"		

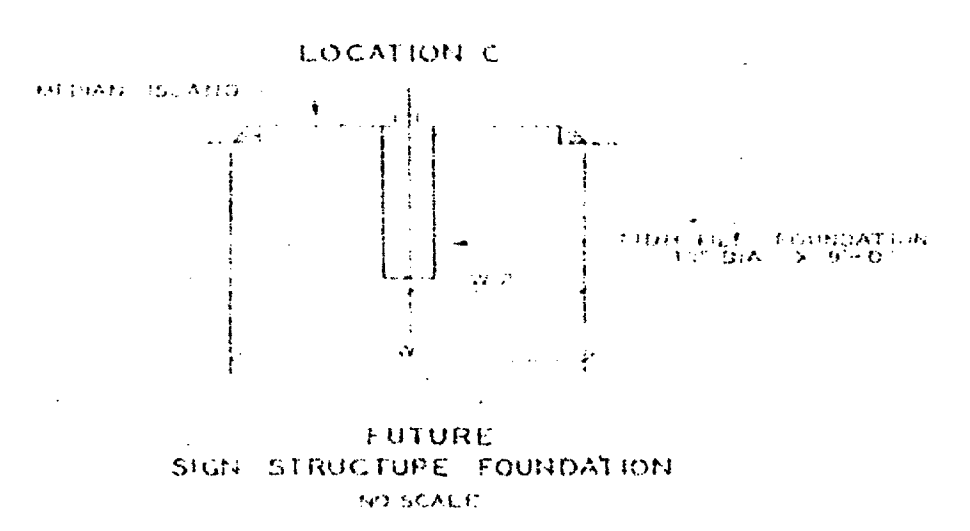
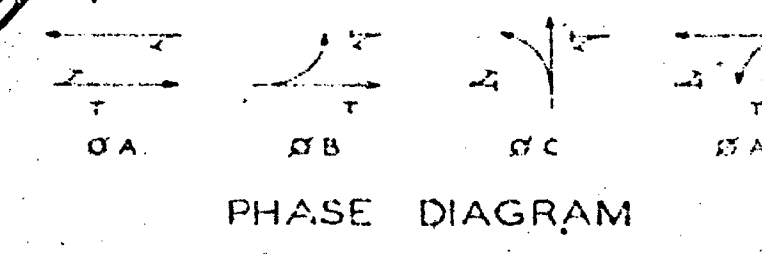
* INSTALL 2" Ø DETECTOR CABLE FROM PULL BOX ADJACENT TO NEW DETECTOR TO CONTROLLER. CONDUCTORS SHALL WITHDRAW EXISTING CONDUCTORS FROM RUNS 7, 8, AND CONTROLLER RUN BEFORE INSTALLING * Ø C CABLES.

POLE SCHEDULE

LOCATION	STANDARD	LUMINAIRE	SIGNALS		
			TYPE	MOUNTING	LENS SIZE
A	XXII	ADD W (NEW)	2-W3C 1-W3C	B-2 M2-20" MA	6-8" 3-12"
B	XXI		2-W3C 1-W3C	B-2 M2-20" MA	6-8" 3-12"
C	1-C (SEE NOTE)		2-W3C	A-6	2-8" 1-12" ARROW
D	1-C		1-W3C	A-2	3-8"
E	XXII RELOCATE	ADD N (NEW)	1-W3C	B-1	2-8" 2-12" ARROW
F	1-C RELOCATE		2-W3C	A-6	2-8" 1-12" ARROW

DESCRIPTION OF WORK:

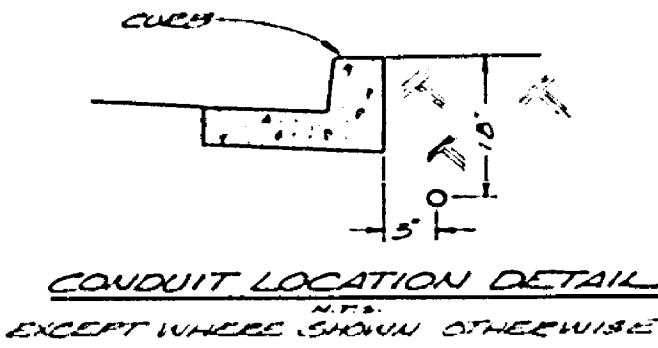
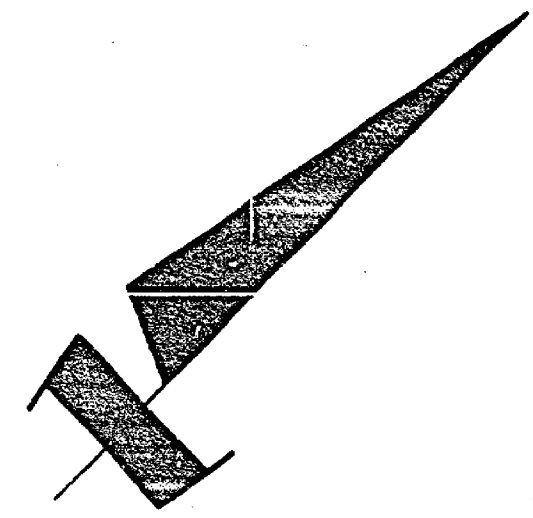
- RELOCATE TYPE 1-C AND TYPE XXII STANDARDS AND EQUIP AS SHOWN.
- INSTALL NEW Ø DETECTORS PER STANDARD X-23.
- SEE CONDUCTOR SCHEDULE FOR WIRING DETAILS.
- LOCATIONS A AND F: SALVAGE EXISTING LUMINAIRES AND RELOCATE TO NEW FOUNDATION ADJACENT TO LUMINAIRES. (SEE EXISTING S.A. ADJACENT TO LOCATION D) PROVIDE AND INSTALL SIGNAL SERVICE. ALL NEW LUMINAIRES WILL BE CITY STANDARD.



REVISIONS			CITY OF RIVERSIDE, CALIFORNIA DEPARTMENT OF PUBLIC WORKS	
MARK	DATE	DESCRIPTION		

INDIANA AVENUE WIDENING TRAFFIC SIGNAL MODIFICATIONS
ARLINGTON AVE. AND FREEWAY RAMP

DATE: 2-14-77
SHEET 1 OF 1



CONSTRUCTION NOTES

1. INSTALL ALL STREET LIGHT FACILITIES LISTED IN THE STREET LIGHT STRUCTURE SCHEDULE AS SHOWN, IN ACCORDANCE WITH THE U.S. DRAWINGS LISTED.
2. PROVIDE CURBS AND SIDEWALK EXISTING STREET LIGHT FACILITIES AS SHOWN. ALL WORK TO BE DONE PER CITY OF RIVERSIDE STANDARD SPECIFICATIONS DEPT. SPECIFICATION 119 FOR STREET LIGHT CONSTRUCTION.
3. ALL ELECTRICAL STANDARDS SHALL BE LISTED AT SEPARATE SHEETS UNDER SPECIAL USE APPROVED BY THE ENGINEER. LOCATE CONDUITS PER CONDUIT LOCATION DETAIL EXCEPT WHERE NOTING HEREON SHOWS OTHER FACILITY TO BE PROVIDED OR AS OTHERWISE NOTED.
4. THESE PLANS ARE FOR STREET LIGHT WORK ONLY. SEE PLANS AND SPECIFICATIONS FOR DETAILS FOR STREET LIGHT FACILITIES WHICH ARE NOT SHOWN FOR THESE PLANS.
5. WORK ON EXISTING CONSTRUCTION THE CONTRACTOR SHALL BE RESPONSIBLE TO MARK THE LOCATION OF THESE FACILITIES WHICH ARE NOT SHOWN BY THE WORK.
6. MAKE INSTALLATION DATE OF LAMPS AND PHOTO CONTROLS AS PROVIDED FOR BY MANUFACTURER.

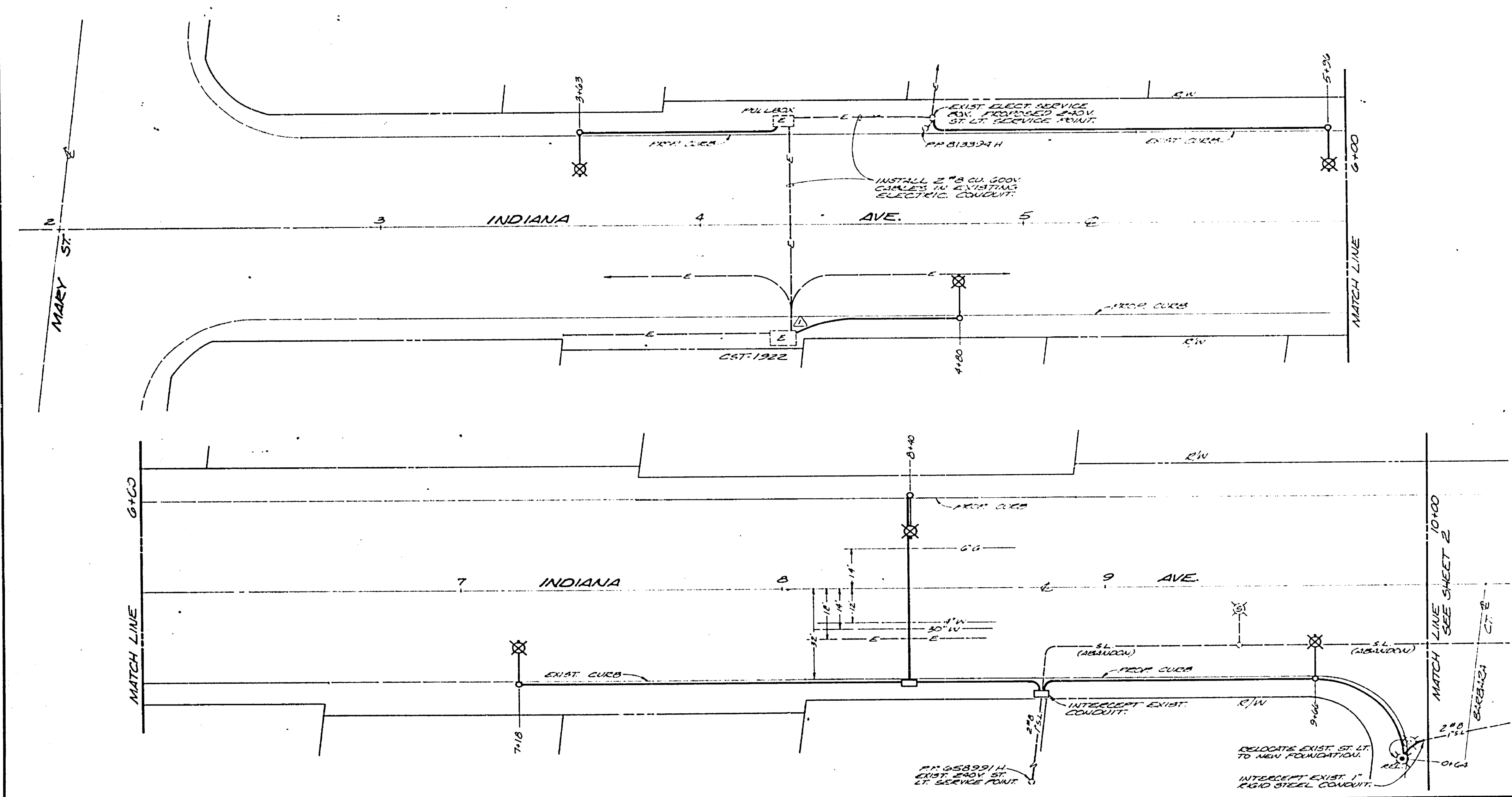
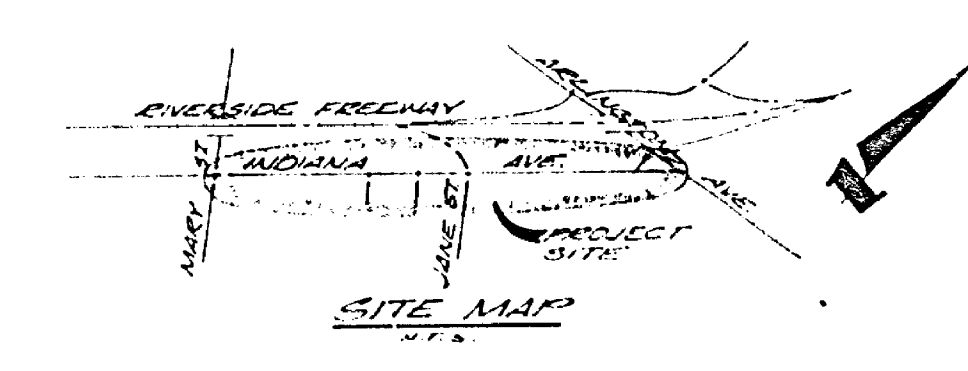
STREET LIGHT STRUCTURE SCHEDULE

GENERAL INFORMATION		SIZE	NO.	QTY	ITEM
⊗	CONCRETE ELECTRICAL STRUCTURE	22-9"	20	200	119
	HIGH PRESSURE SODIUM LUMINAIRE	150W	20	—	—
	HIGH PRESSURE SODIUM LAMP	150W	20	—	—
⊙	PHOTO CONTROLLER	1000W	20	200	—
	CONCRETE PULLBOX	101712"	8	800	117
⊗	1" RIGID STEEL CONDUIT WITH 5/8" CU BOND CABLED CONDUIT AS SHOWN	—	28	2800	—
	EXPLODED EXIST. SL FOUNDATION AND 12" IN. ALL LUMINAIRE REMAIN EXIST FOUNDATION	—	2	802	119 (ONLY)
⊗	REMOVE EXIST. ELECTRICAL STRUCTURE FOUNDATION	—	14	—	—
⊗	EXIST. ST. LT. FACILITIES TO BE REMOVED	—	—	—	—
⊗	REMOVE EXIST. SIDEWALK AND CURB AND RECONSTRUCT TO NEW 2" RIGID STEEL CONDUIT	—	—	—	—

- ① LUMINAIRE, LAMP AND PHOTO CONTROLLER TO BE FURNISHED BY CITY OF RIVERSIDE AND INSTALLED BY CONTRACTOR.
- ② FOUNDATIONS WITHIN PROPOSED ROADWAY ARE TO BE COMPLETELY REMOVED. REMAINDER OF FOUNDATIONS TO BE REMOVED PER STREET LIGHT SPECIFICATION 119.

LEGEND

- EXISTING FACILITIES
- PROPOSED FACILITIES



INDIANA AVE ORNAMENTAL STREET LIGHTS INDIANA AVE, MARY ST TO ARLINGTON AVE.			
SCALE 1"=20'	DRAWN LUCY	CITY OF RIVERSIDE DEPARTMENT OF PUBLIC UTILITIES	
DATE 10-28-76	CHECKED W. H. H.	DRAWING NO. E 15-4939	
JOB NO. 4239	APPROVED P. H. S.	DIV.	
DATE	F. B. NO.	REV.	

Indiana Avenue
Widening
 Mary to Arlington R- 1852
 SHEET 9 OF 10

