

PRIOR TO STARTING CONSTRUCTION, THE CONTRACTOR SHALL NOTIFY THE FOLLOWING UTILITY COMPANIES.

- SO. CALIF. GAS CO. (714) 781-6117
- CITY OF RIVERSIDE (ELECTRIC DIVISION) (714) 787-7411
- CITY OF RIVERSIDE (WATER DIVISION) (714) 787-7441
- SO. CALIF. GAS CO. (30" HIGH PRESSURE LINE) (714) 845-2617

ST. NAME	TRAFFIC SIGN	SCHEDULE
(A)	PIERCE ST.	3600
(A)	TAYLOR ST.	11800
(B)	TAYLOR ST.	11800
(B)	WALTON ST.	3600
(C)	TAYLOR ST.	11800
(C)	HANCOCK DR.	3600
(D)	W 53 (NOT A THROUGH STREET)	24" x 24"
(E)	R1 (STOP SIGN)	30" OCTAGON

~ GENERAL NOTES ~

- IT SHALL BE THE RESPONSIBILITY OF THE CONTRACTOR TO CLEAR THE RIGHT OF WAY IN ACCORDANCE WITH THE PROVISIONS OF LAW AS IT AFFECTS EACH UTILITY, INCLUDING IRRIGATION LINES AND APPURTENANCES, AT NO COST TO THE CITY.
- CONSTRUCTION SHALL BE IN ACCORDANCE WITH STANDARD SPECIFICATIONS FOR PUBLIC WORKS CONSTRUCTION, 1976 EDITION, AND CITY OF RIVERSIDE STANDARD DRAWINGS.
- ALL "FLAGGED" ELEVATIONS SHALL BE STAKED BY ENGINEER.
- GRADING WILL REQUIRE A PERMIT FOR A CUT OR FILL EXCEEDING 50 CUBIC YARDS, OR A FILL OVER ONE FOOT IN DEPTH.
- TRIM EDGE OF EXISTING PAVEMENT, WHERE NEW PAVING JOINS EXISTING PAVEMENT, TO CLEAN STRAIGHT LINE, CONSTRUCT MATCH-UP PAVING AS SHOWN AND OVERLAY AS DIRECTED IN THE FIELD TO PRODUCE A SMOOTH SECTION. ENGINEER ESTIMATES OVERLAY TO BE 9 TONS.
- THE SUBDIVIDER SHALL ARRANGE FOR A SOILS TEST TO BE MADE BY A SOILS ENGINEER AFTER THE STREETS HAVE BEEN PREPARED TO ROUGH GRADE. DEPTH OF BASE MATERIAL AND A.C. PAVING SHALL BE DETERMINED BY THE CITY OF RIVERSIDE DESIGN STANDARDS AND TEST PROCEDURES.
- CONSTRUCT DRIVEWAY APPROACHES PER STD. DWG. 302. EXACT SIZE AND LOCATION TO BE DETERMINED AT THE TIME OF CONSTRUCTION AS APPROVED BY THE TRAFFIC ENGINEER.
- CURB RETURNS SHALL BE CONSTRUCTED PER STANDARD DRAWING 304.
- TRAFFIC CONTROL SIGNS WILL BE IN PLACE PRIOR TO OPENING STREETS TO TRAFFIC.
- CURB & GUTTER SHALL BE STAKED WITH 3' OFFSETS AT 25' INTERVALS.
- SEE "STREET LIGHTING PLANS" FOR QUANTITY AND LOCATION OF REQUIRED STREET LIGHTS.
- IN ORDER TO COORDINATE CITY'S PORTION OF WORK THE DEVELOPER SHALL GIVE THE CITY 45 DAYS NOTICE IN ORDER THAT DEVELOPERS AND CITY'S WORK MAY BE INSTALLED CONCURRENTLY.
- SEE LANDSCAPING AND SPRINKLER SYSTEM PLANS FOR PARKWAY ON PIERCE STREET.

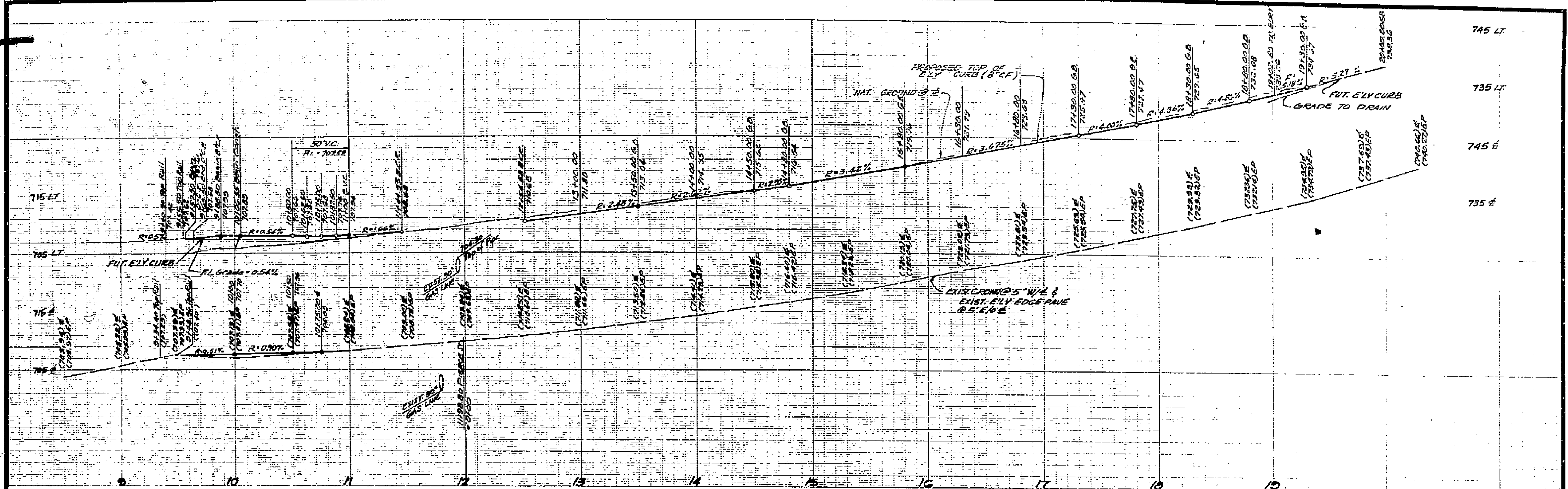
~ CONSTRUCTION NOTES ~

- CONSTRUCT 2 1/2" A.C. OVER 6" D.G. BASE (MIN. A.C. ON PIERCE ST. WILL BE 4" A.C. OVER 8 1/2" D.G. BASE)
- CONSTRUCT CURB AND GUTTER PER STD. DWG. 200 (TYPE I) 6" C.F.
- CONSTRUCT CURB AND GUTTER PER STD. DWG. 200 (TYPE I) 8" C.F.
- CONSTRUCT CURB SIDEWALK PER STD. DWG. 325
- CONSTRUCT CROSS GUTTER PER STD. DWG. 220.
- CONSTRUCT BARRICADE PER STD. DWG. 180, PLUS TYPE N RED REFLECTOR.
- CONSTRUCT 2" x 4" REDWOOD HEADER
- CONSTRUCT A.C. BERM (TYPE I) PER STD. DWG. 250
- CONSTRUCT TYPE "L" GUIDE MARKS @ 10' O.C. PER STD. DWG. 665
- CONSTRUCT BLOCK WALL PER STD. DWG. 704
- CONSTRUCT WHEELCHAIR RAMPS PER STD. DWG. 304

BENCH MARK:
U.S.C. & G.S. B.M. K-38 1924 DISK IN HEADWALL ON N.W. COR. FILLMORE & SANTA FE R.R. TRACKS RD. 706/54 ELEV. 722.010

S.R. 223
R-30

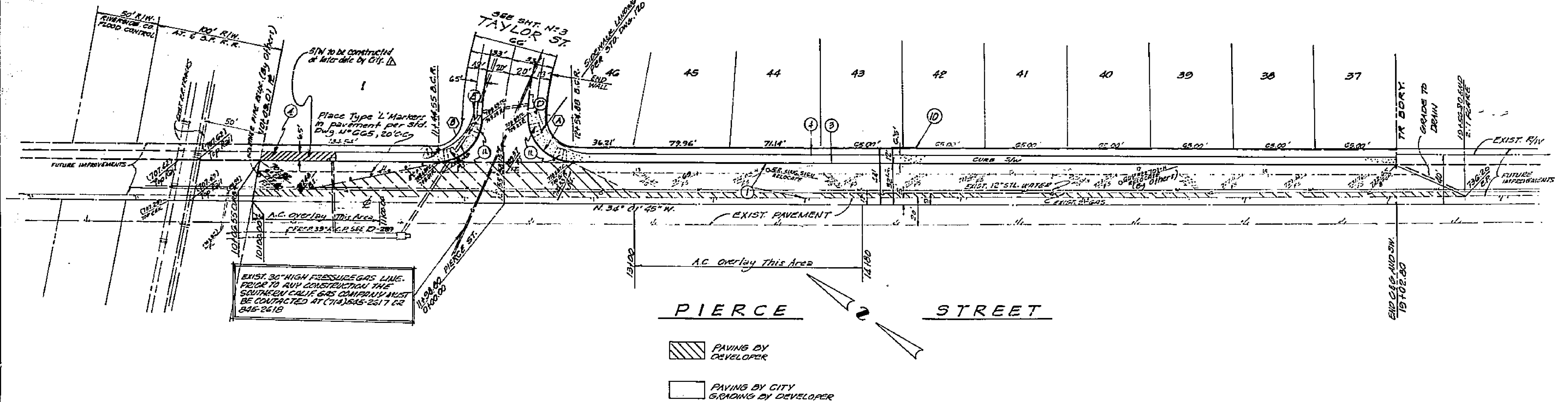
<p>PREPARED UNDER THE SUPERVISION OF PAUL H. BARRIOS - R.C.E. 19897</p>	<p>9/2/74 DATE</p>	<p>CITY OF RIVERSIDE, CALIFORNIA DEPARTMENT OF PUBLIC WORKS</p>		<p>TITLE SHEET TYPICAL SECTIONS TRACT NO 6756-1</p>		<p>PROJECT NO. R-1875</p>
		<p>APPROVED BY OFFICE ENGINEER TRAFFIC DIVISION</p>	<p>DATE 10/15/76</p>	<p>APPROVED BY DIRECTOR OF PUBLIC WORKS</p>	<p>DATE 10/15/76</p>	<p>SHEET 1 OF 5 FILE NO. 5513</p>



CURVE DATA

A	R	L	T
1	95' 23' 12"	95' 58' 27"	38.46'
2	86' 17' 07"	55' 52' 71"	32.80'

BENCH MARK:
 U.S.C. & G.S. B.M. K-38 10" DIA DISK IN HEADWALL ON N.W. COR. FILLMORE & SANTA FE R.F. TRACKS P.B. 706/34 ELEV. 722.010
 SEE SHEET #1 FOR GENERAL AND CONSTRUCTION NOTES.

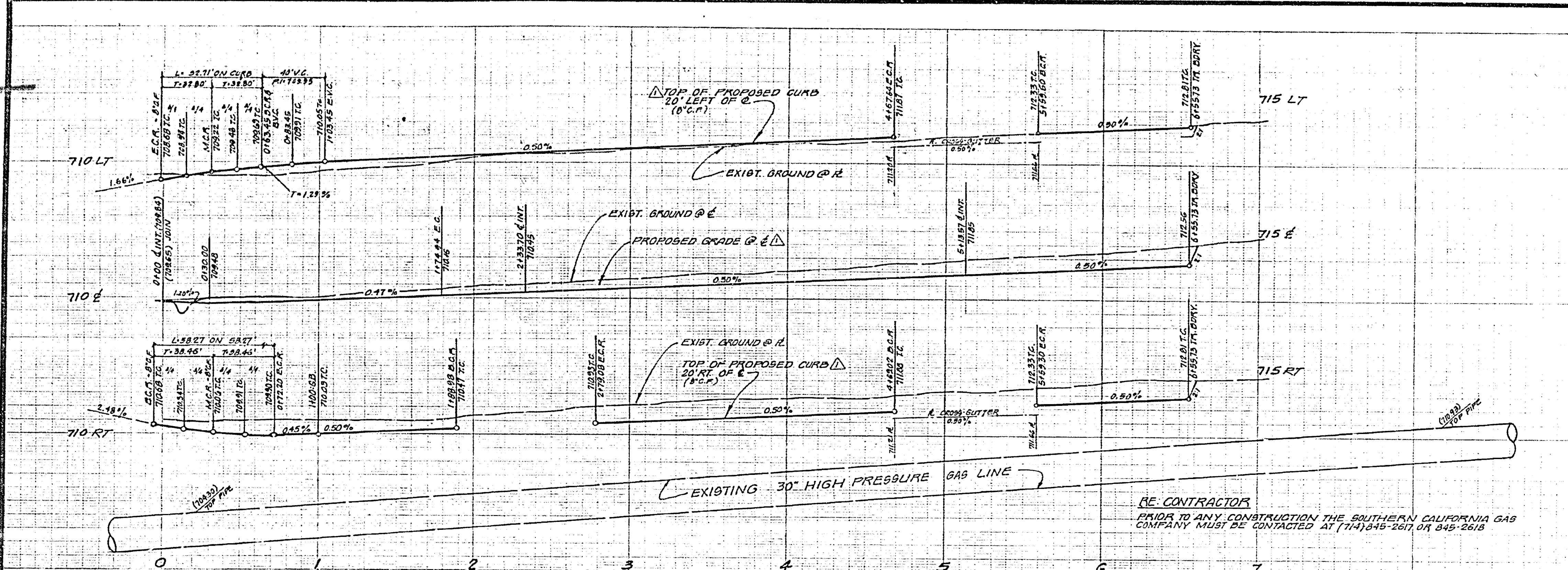


PIERCE STREET

- PAVING BY DEVELOPER
- PAVING BY CITY GRADING BY DEVELOPER

SO. CALIF. GAS CO.
 APPROVED THROUGH REV. 1.
 BY: *[Signature]* 1-12-77
 DATE

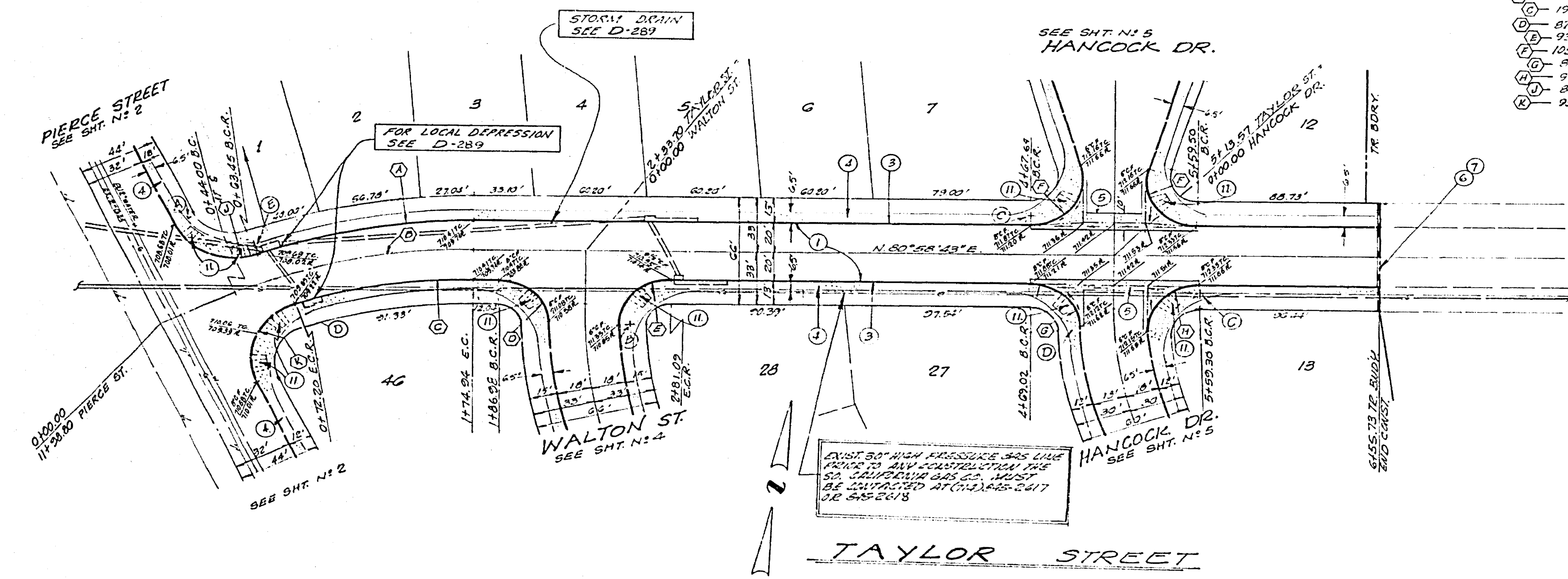
 MANLEY ARCHITECT PLANNING & CONSULTING ENGINEERS PREPARED UNDER THE SUPERVISION OF <i>[Signature]</i> PAUL H. PARK 105 R.C.E. 19897 9/3/74 DATE	CITY OF RIVERSIDE, CALIFORNIA DEPARTMENT OF PUBLIC WORKS APPROVED BY: <i>[Signature]</i> OFFICE ENGINEER PARK DEPARTMENT TRAFFIC DIVISION ASSISTANT CITY ENG.	STREET PLAN AND PROFILE PIERCE STREET TRACT NO. 6756-1 HORIZ. SCALE: 1" = 40' VERT. SCALE: 1" = 8'	PROJECT NO. R-1875 SHEET 2 OF 5 FILE NO. 5513
	DESIGNED BY: <i>[Signature]</i> DRAWN BY: <i>[Signature]</i> CHECKED BY: <i>[Signature]</i>	DATE: 10/15/76	



CURVE DATA

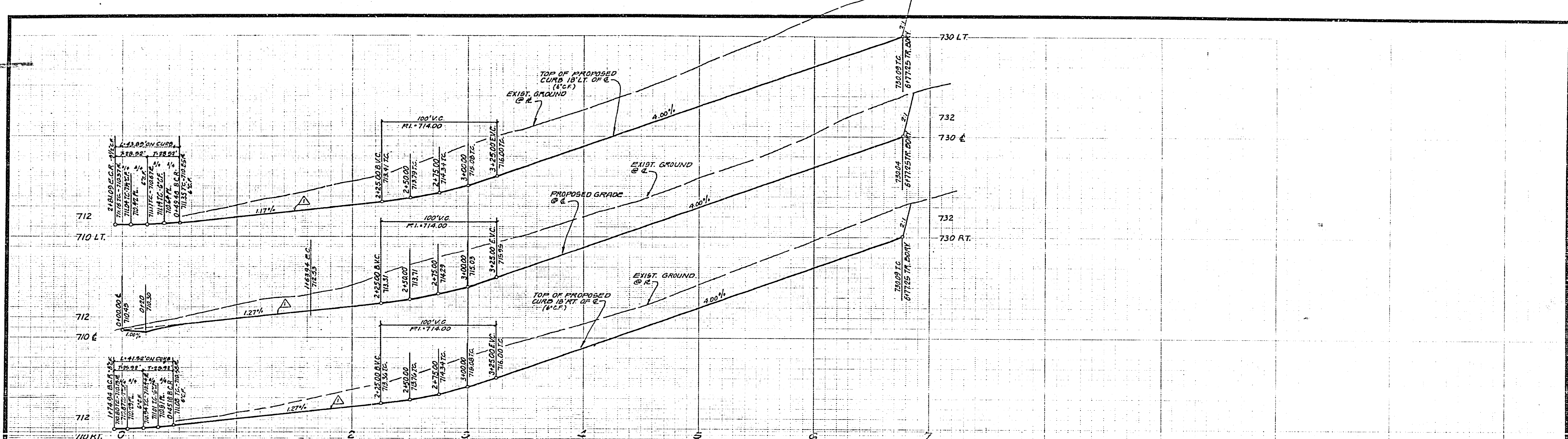
A	R	L	T
(A) 21° 17' 35"	320'	118.92'	60.16'
(B) 25° 00' 28"	300'	130.04'	62.53'
(C) 19° 37' 12"	280'	95.30'	46.42'
(D) 81° 40' 27"	27'	41.32'	25.92'
(E) 93° 08' 50"	27'	43.89'	28.52'
(F) 125° 00' 00"	27'	49.48'	35.19'
(G) 83° 43' 27"	27'	40.87'	25.50'
(H) 95° 10' 52"	27'	41.85'	27.56'
(I) 28° 17' 07"	35'	52.71'	32.80'
(K) 25° 23' 12"	35'	58.27'	38.46'

BENCH MARK:
 U.S.C. & G.S. B.M. K-38 1924 DISK IN
 HEADWALL ON NW COR. FULLMORE &
 SANTA FE R.R. TRACKS I.B. 702/54
 ELEV. 722.010
 SEE SHEET #1 FOR GENERAL AND
 CONSTRUCTION NOTES.



SO. CALIF. GAS CO.
 APPROVED THROUGH REV. 1
 BY: *[Signature]* 1-17-77
 DATE

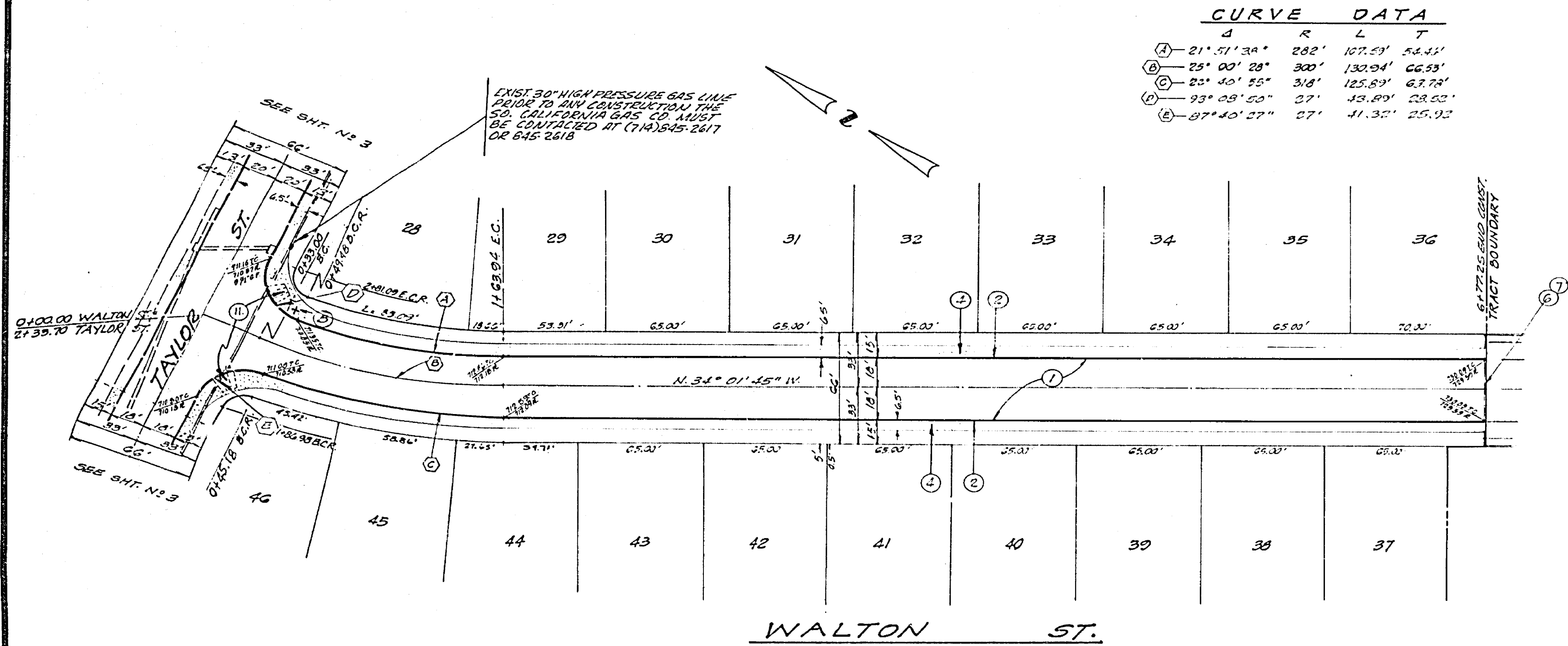
 VPI ENGINEERS AND ARCHITECTS PREPARED UNDER THE SUPERVISION OF <i>[Signature]</i> PAUL H. BARR (C.E. 1985) 9/2/74 DATE	CITY OF RIVERSIDE, CALIFORNIA DEPARTMENT OF PUBLIC WORKS APPROVED BY OFFICE ENGINEER <i>[Signature]</i> TRAFFIC DIVISION ASSISTANT CITY ENGINEER	STREET PLAN AND PROFILE TAYLOR STREET TRACT NO 6756-1 HORIZ. SCALE: 1" = 40' VERT. SCALE: 1" = 4'	PROJECT NO. R-1875 SHEET 3 OF 5 FILE NO. 5573
	DESIGNED BY DRAWN BY CHECKED BY: <i>[Signature]</i>	REVISIONS DATE 7/21/77 APPR. DATE	APPROVED BY DIRECTOR OF PUBLIC WORKS <i>[Signature]</i> DATE 12/15/76



CURVE DATA

Δ	R	L	T
(A) 21° 51' 34"	282'	107.59'	54.41'
(B) 25° 00' 28"	300'	132.94'	66.53'
(C) 23° 40' 55"	318'	125.89'	62.74'
(D) 23° 48' 50"	27'	43.89'	22.62'
(E) 27° 40' 27"	27'	41.32'	25.92'

BENCH MARK:
 U.S.C. & G.S. B.M. K-38 1924 DISK IN
 HEADWALL ON N.W. COR. HILLMORE &
 SANTA FE R.R. TRACKS. P.D. 700' 54"
 ELEV. 122.010
 SEE SHEET # 1 FOR GENERAL AND
 CONSTRUCTION NOTES



SO. CALIF. GAS CO.
 APPROVED THROUGH REV. I.
 DATE 1-17-77

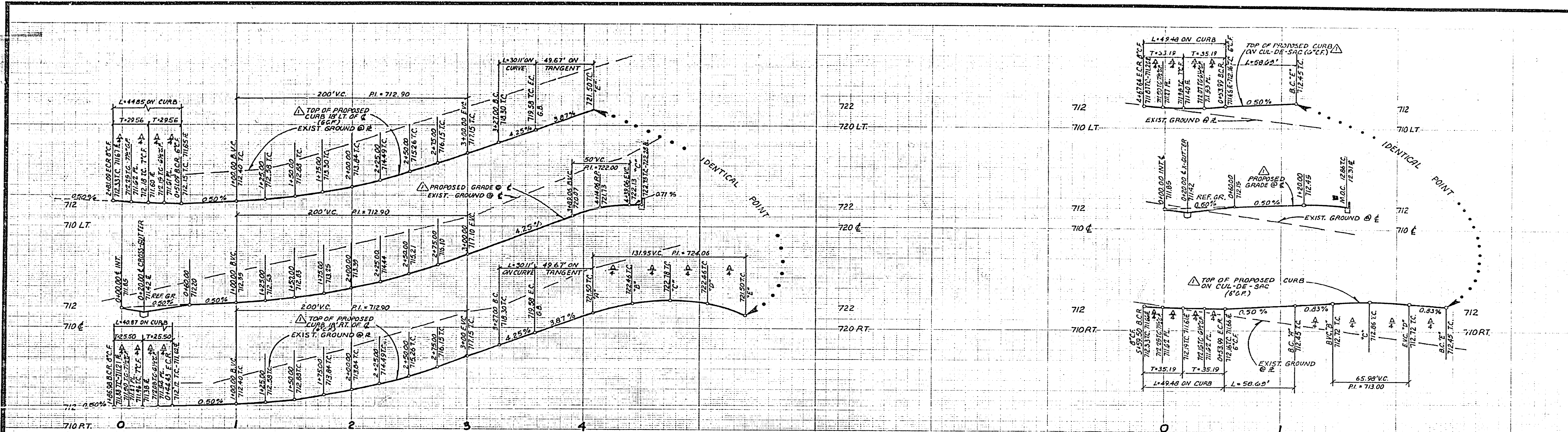
V.T.N.
 ENGINEERS ARCHITECTS PLANNERS INTERIORS AND LANDSCAPERS
 PREPARED UNDER THE SUPERVISION OF
 PAUL H. DARRIOS, R.C.E. 19857
 DATE 9/2/74

REVISIONS	DATE
REVISIONS TO STA. 5476.00	9/2/74

CITY OF RIVERSIDE, CALIFORNIA
 DEPARTMENT OF PUBLIC WORKS
 APPROVED BY: [Signature]
 DATE: 10/15/76

STREET PLAN AND PROFILE	PROJECT NO.
WALTON ST. TRACT NO. 6756-1	R-1875
HORIZ. SCALE: 1" = 40'	VERT. SCALE: 1" = 8'

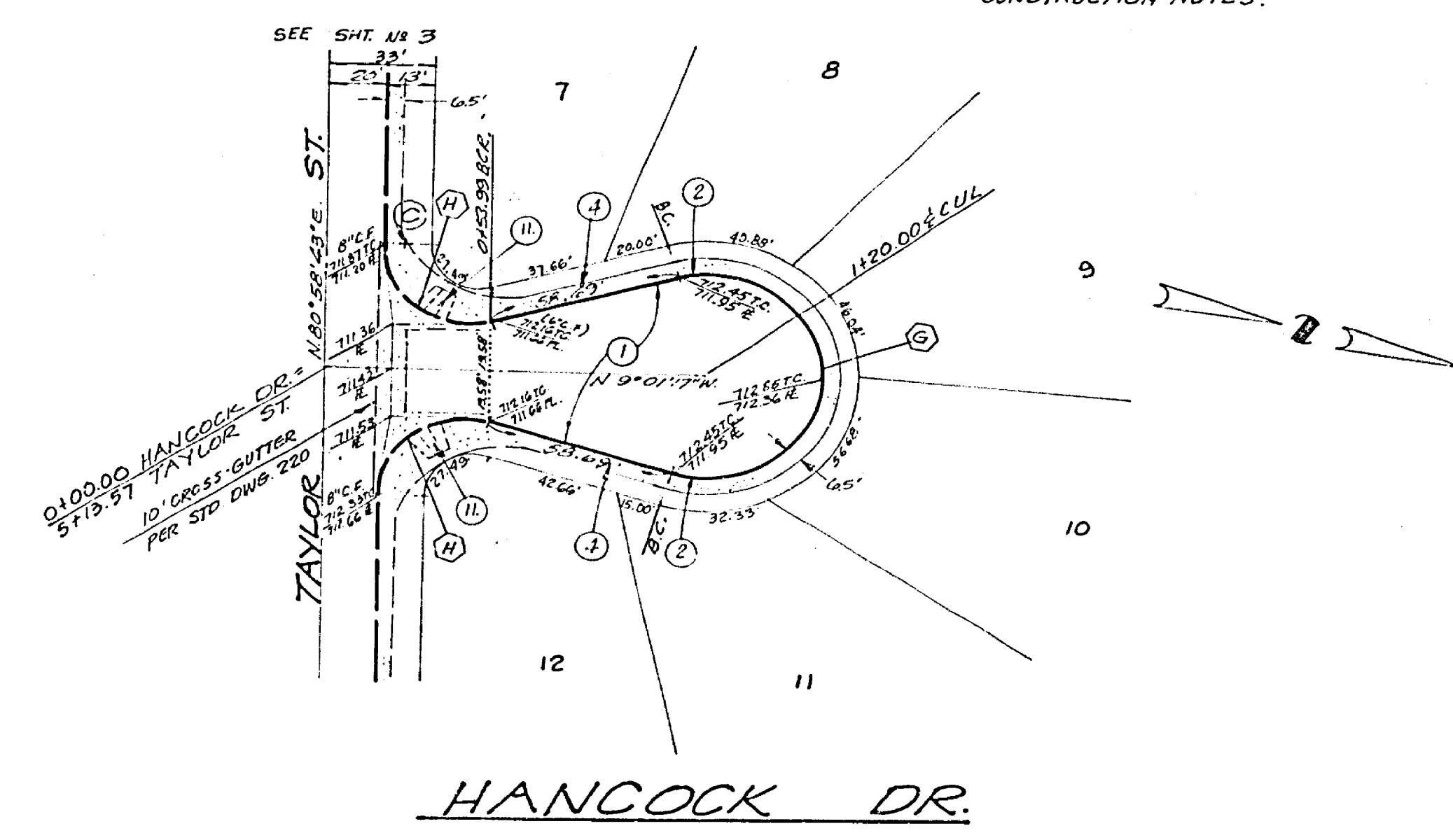
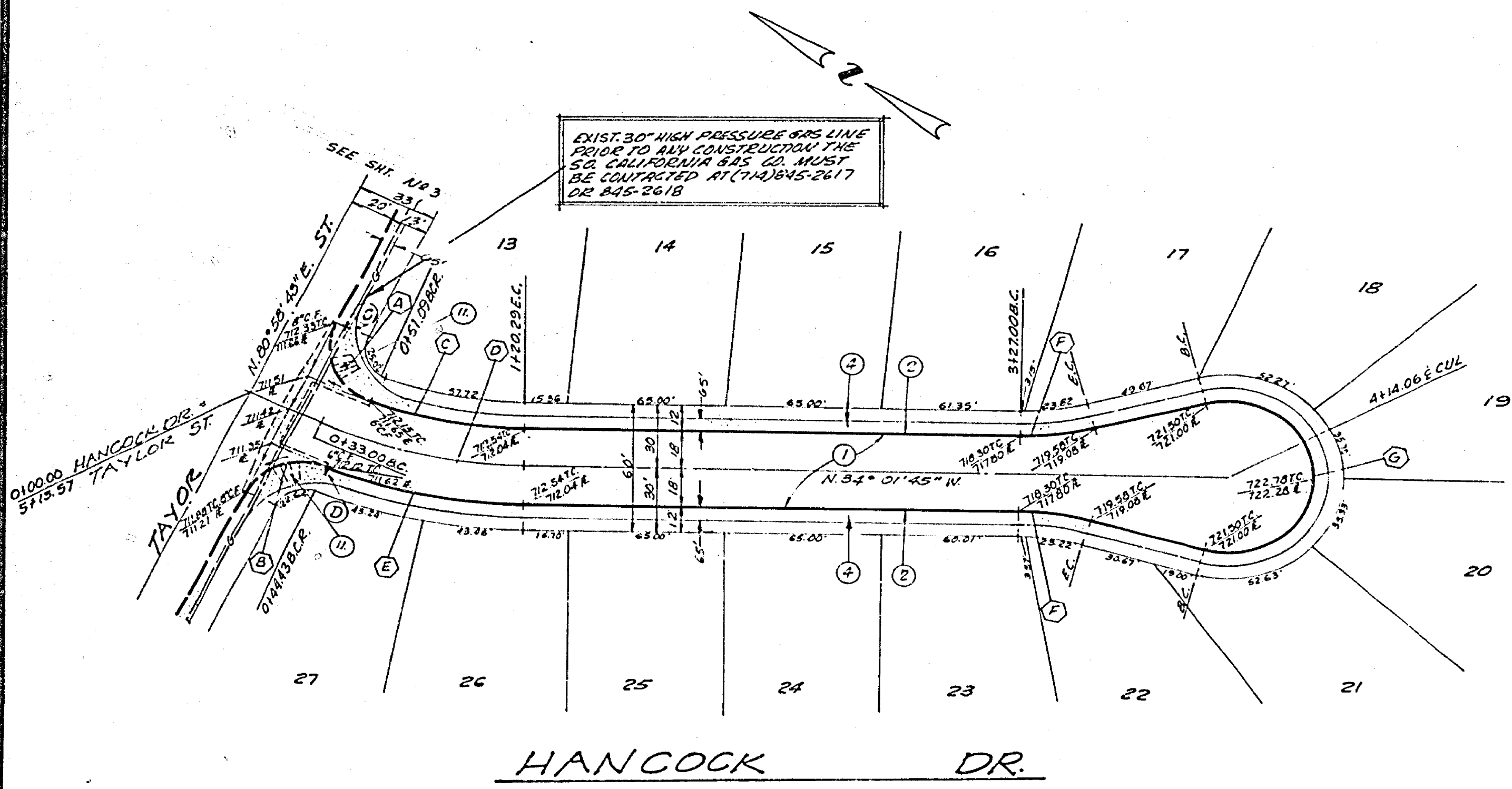
SHEET 4 OF 5
 FILE NO. 5513



CURVE DATA

Curve	Δ	R	L	T
(A)	95° 10' 52"	27'	44.85'	27.50'
(B)	86° 43' 27"	27'	40.87'	25.50'
(C)	19° 49' 32"	182'	62.95'	31.80'
(D)	25° 00' 28"	200'	87.29'	44.35'
(E)	21° 43' 55"	218'	82.69'	31.84'
(F)	15° 00' 00"	115'	30.11'	15.14'
(G)	210° 00' 00"	36'	131.95'	
(H)	105° 00' 00"	27'	49.48'	35.10'

BENCH MARK
 115.C. & G.S. D.M. K-38 1924 DISK IN
 WARDHILL ON W.M. CO'S. FILLMORE &
 SANTA FE R.R. TRACKS, F.B. 706/34
 ELEV. 722.010
 SEE SHEET #1 FOR GENERAL AND
 CONSTRUCTION NOTES.



SO. CALIF. GAS CO.
 APPROVED THROUGH REV. 1.
 BY: *[Signature]* DATE: 1-17-71

 ENGINEERS, ARCHITECTS, PLANNERS, SURVEYORS, AND LANDSCAPE ARCHITECTS PREPARED UNDER THE SUPERVISION OF <i>[Signature]</i> 9/2/74 PAUL H. BARRIOS, R.C.E. 15857 DATE	CITY OF RIVERSIDE, CALIFORNIA DEPARTMENT OF PUBLIC WORKS	STREET PLAN AND PROFILE HANCOCK DR. TRACT N° 6750-1	PROJECT NO. R-1875 SHEET 5 OF 5 FILE NO. 5513
	DESIGNED BY: <i>[Signature]</i> DRAWN BY: <i>[Signature]</i> CHECKED BY: <i>[Signature]</i>	APPROVED BY: <i>[Signature]</i> DATE: 1/17/71 OFFICE ENGINEER PUBLIC DEPARTMENT TRAFFIC DIVISION ASSISTANT CITY ENGINEER	HORIZ. SCALE: 1" = 40' VERT. SCALE: 1" = 4'