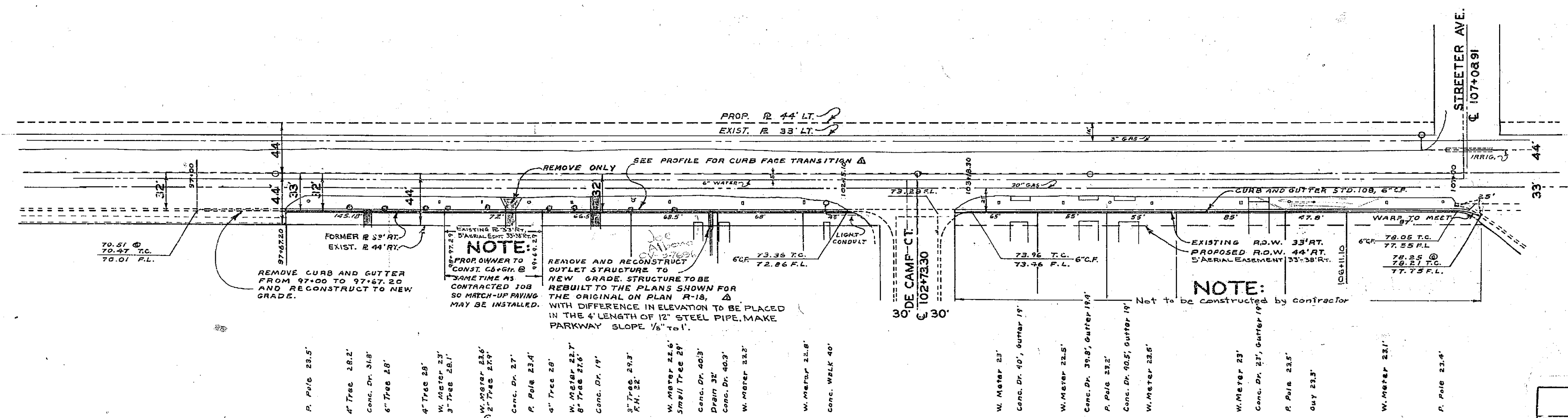
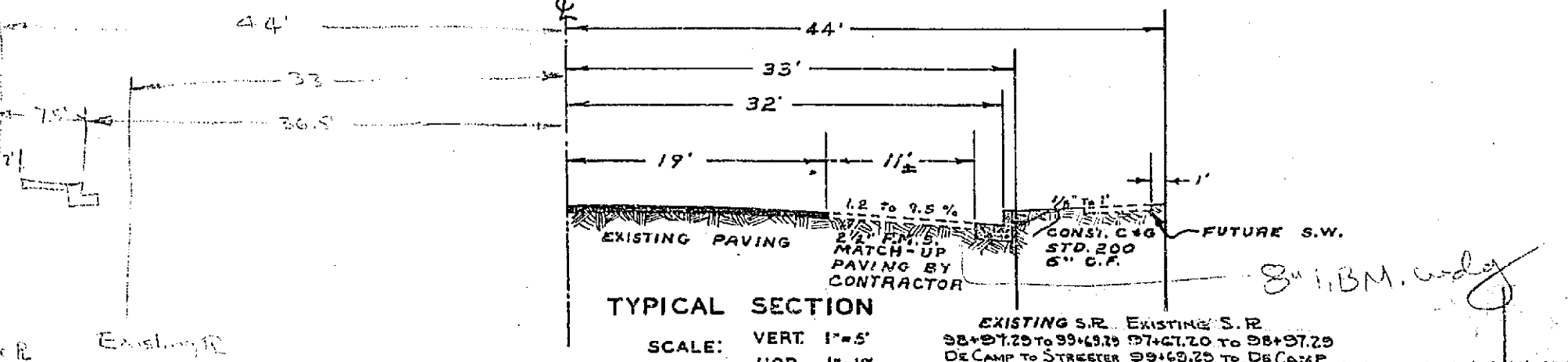


B.M. ELEV. 783.22 S&L IN SECURB RET.
 ARLINGTON & CALIFORNIA.
 F.B. 542/39-45 607/55,70
 SCALE: HOR. 1"=50'
 VERT. 1"=5'



This curb location set by F.P. to have a section similar to Kansas Ave (R-47). C&G with Drive Mains of Light Dept. with the curb face 1/2" deep, with the curb face 1/2" deep, with the curb face 1/2" deep, with the curb face 1/2" deep.



- NOTE:
1. @ INDICATES A TOP OF CURB ELEVATION OBTAINED BY ADDING A FULL CURB FACE HEIGHT TO A F.L. ELEVATION.
 2. UTILITIES TO BE RELOCATED BY UTILITY COMPANY CONCERNED.
 3. ALL TREES FROM 97+67.20 TO 102+15.10 TO BE REMOVED. CONTRACTOR TO CONSTRUCT SHADED PORTIONS OF CURB & GUTTER, AND TO REMOVE AND RECONSTRUCT SHADED DRIVEWAYS TO 44' RT. AS PER STD. NO. 300 (EXCEPT REMOVE ONLY D/W AT 99+45).
 4. P.M.S. SHALL CONFORM WITH STATE OF CALIFORNIA STANDARD SPECIFICATIONS, AUG. 54, SEC. 2.0, CHAR. 2, FOR CLASS B PAVEMENT WITH 1/2" MAX. AGGREGATE, AND WITH SECTIONS 54.455, FOR STEAM-REFINED PAVING ASPHALT, PENETRATION 200-300 OR BETTER.

REVISIONS			CITY OF RIVERSIDE, CALIFORNIA DEPARTMENT OF PUBLIC WORKS	
MARK	DATE	DESCRIPTION		
B-21-58		Deleted project DeCamp to Streeter	ARLINGTON AVENUE CURB & GUTTER S. SIDE STREETER TO JEFFERSON	
Y-3-58		Changed to Construction by Contractor. AS.		
Y-23-58		Added c.r. Traps, and changed note on Const. of Street Structure, changed R/W within side. DL. Added Note S. side.		
DESIGNED BY <i>W.M.</i>		CHECKED BY <i>J.L.B.</i>	APPROVED BY <i>[Signature]</i>	R-189 SHEET 1 OF 7
DRAWN BY <i>BL.</i>		RECOMMENDED BY <i>[Signature]</i>	DIRECTOR OF PUBLIC WORKS DATE <i>July 3, 1958</i>	

PROFILE	DATE	BY
NOTE BOOK, CHECKS, ETC.		
NO. OF SHEETS		
DATE		

PLAN	DATE	BY
NOTE BOOK, CHECKS, ETC.		
NO. OF SHEETS		
DATE		

