

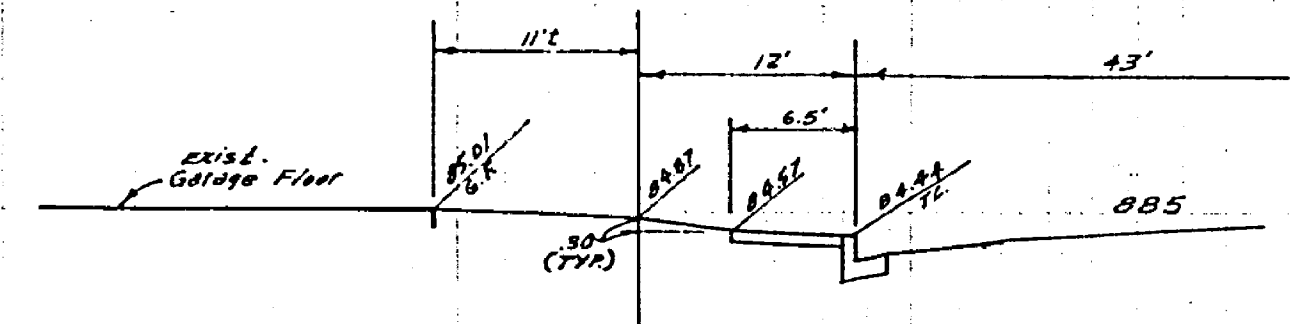
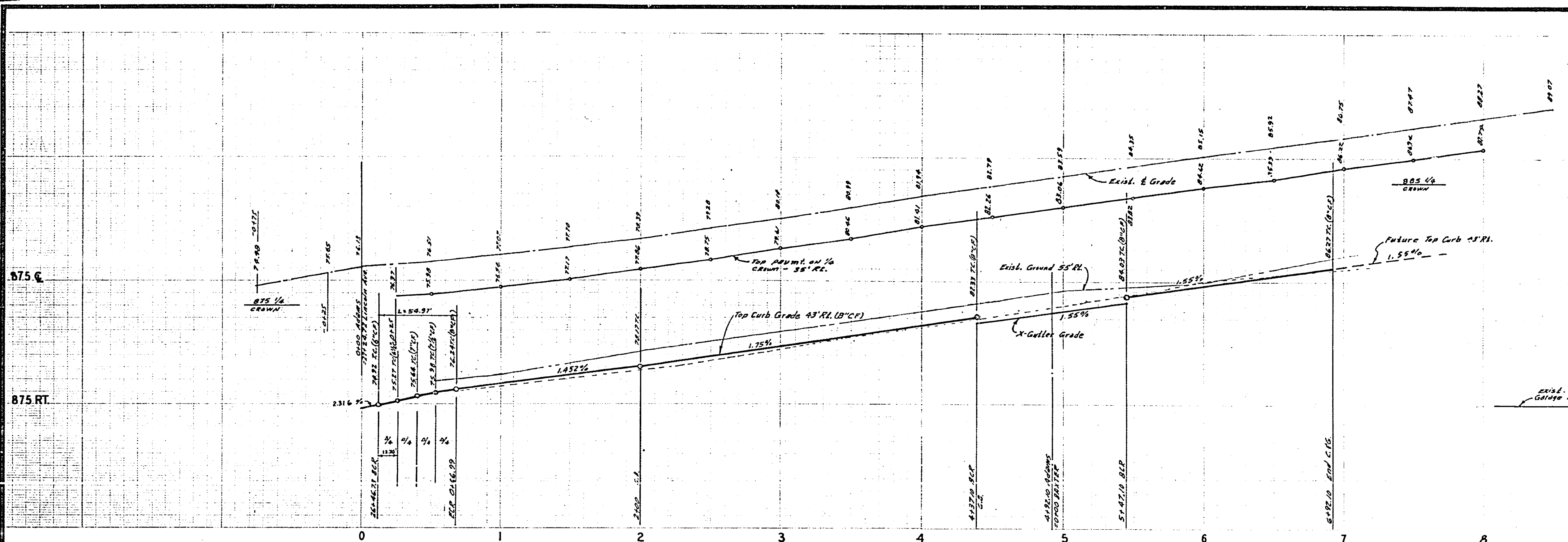
- CONSTRUCTION NOTES**
- ① Const. Curb and Gutter Standard Dwg. No. 200 (6" C.F.)
 - ② Const. Curbside Sidewalk Standard Dwg. No. 325
 - ③ Const. Access Ramp Standard Dwg. No. 304
 - ④ Const. Cross Gutter Standard Dwg. No. 220 (width shown on plans)
 - ⑤ Const. paving per Typical section
 - ⑥ Place 2"x4" Redwood Header
 - ⑦ Const. Barricade Standard Dwg. No. 180
 - ⑧ Const. 3rd 70A Blockway, see landscape irrigation plan for type block, color, etc.
 - ⑨ Const. curb and gutter standard Dwg. No. 200 (8" C.F.)

GENERAL NOTES
(SEE SHEET 2)

Traffic Control & Street Name Sign Schedule		
A	ADAMS ST	2800
	BAXTER WAY	8300
B	LINCOLN AVE	8300
	SONOMA DR	2800
C	SONOMA DR	2800
	THOREAU LN	8300
D	THOREAU LN	8300
	DARWIN DR	2800
E	DARWIN DR	2800
	BAXTER WAY	8300
F	RI (STOP SIGN) 30' Oct.	

BENCH MARK Elev. 826.517
 4" dia. steel pipe in conc. curb adjacent to 2' dia. storm pipe @ Adams St. NW of Victoria St. C/A P.D. 429/12

ALPERT A. WEBB ASSOCIATES CIVIL ENGINEERS RIVERSIDE, CALIFORNIA		CITY OF RIVERSIDE, CALIFORNIA PUBLIC WORKS DEPARTMENT		STREET PLAN AND PROFILE		ACCOUNT NO.
APPROVED BY: <i>[Signature]</i> DATE: 1-30-76 R.E. No. 16056		APPROVED BY: <i>[Signature]</i> DIRECTOR OF PUBLIC WORKS		INDEX		DRAWING NUMBER
DESIGNED BY: <i>[Signature]</i> DRAWN BY: <i>[Signature]</i> CHECKED BY: <i>[Signature]</i>		DATE: 1-31-77		TRACT NO. 7640		R-1929
W.D. 76-58 FOR: Andrews Dax Co. F.B. 1834		SCALE: 1" = 40' Horiz. - 1" = 4' Vert.		SHEET 1 OF 6		76-58-A



SECTION A-A
Scale 1"=10' Horiz, 1"=4' Vert.

BENCH MARK Elev. 896.317

SEE SHT #1 FOR CONSTRUCTION NOTES.

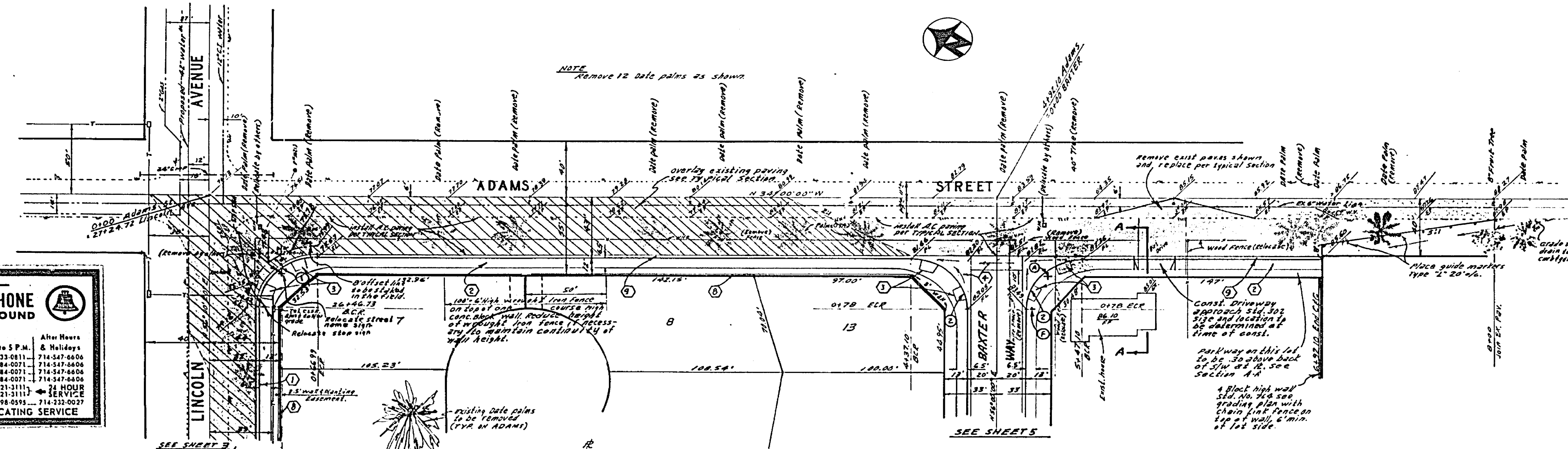
15' R/W curb top in case curb adjacent to a dirt driveway @ Adams St. NW of Wilbur Ave. C.R. R.R. 751/75

CAUTION - PACIFIC TELEPHONE CABLES UNDERGROUND BEFORE EXCAVATING

CALL COLLECT:

Orange County	714-633-0811	714-547-6806
Riverside County	714-684-0071	714-547-6406
Irvine County	714-484-0071	714-547-6406
San Bernardino County	714-484-0071	714-547-6406
Los Angeles County	313-421-3111	24 HOUR SERVICE
Ventura County	313-421-3111	24 HOUR SERVICE
San Diego County	714-298-0593	714-332-0027

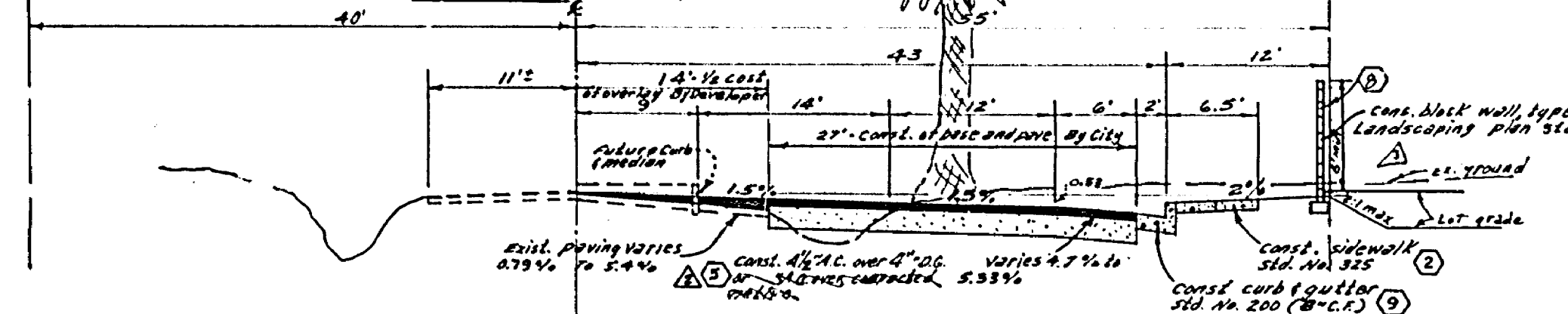
FOR FREE CABLE LOCATING SERVICE



GENERAL NOTES

- Construction shall be in accordance with the standard specifications for public works construction 1976 edition and City of Riverside Standard Drawings.
- The contractor shall arrange for a soil test to be taken by a soils engineer after the streets have been prepared to rough grade. Depth of soil material and A.C. paving shall be determined by City of Riverside design standards and test procedures.
- All flagged elevations shall be staked in the field by the private engineer.
- All traffic signs shall be installed prior to opening the streets to traffic.
- Const. curb returns per Std. Dwg. 304.
- It shall be the responsibility of the contractor to clear the right of way in accordance with the provisions of law as it affects each utility including irrigation lines and appurtenances and as needed to the City.
- Trim edge of existing pavement where new pavement joins to a south straight line. Construct match-up paving as shown and overlay paving as directed in the field to produce a smooth section. Engineer estimates overlay to be 1533 tons.
- Curb and gutter shall be staked with 3" offset at 25' intervals.
- Provide stop control at intersections during construction and relocation of existing stop signs.
- Contact Park and Recreation Dept., Tree Division 787-2518 24 Hrs. prior to relocating or removing any trees.
- In order to coordinate the City's portion of the work the developer shall give the City 45 days' notice in order that the developer's and City's work may be installed concurrently.
- 4"x4" blockouts for mailboxes required in curb slip.
- Consolidate driveway approaches per Std. Dwg. 302. Exact size and location to be determined at the time of construction as approved by the Traffic Engineer.
- The developer to coordinate the installation of access paving at 15' intervals and 45' from the City construction inspector.
- See "street lighting plans" for quantity and location of required street lighting.
- See Landscaping and Sprinkler System Plans for parkways on Lincoln and Adams.

CURB DATA				
NO.	R	D	T	L
1	35'	89' 59" 00"	35'00"	54.97'
2	35'	90' 00" 00"	35'00"	54.78'



TYPICAL SECTION
ADAMS STREET
7.7 * 8

ALBERT A. WEBB ASSOCIATES
CIVIL ENGINEERS
RIVERSIDE, CALIFORNIA

APPROVED BY: *L.A. Warrick* DATE: 4-30-76
R.E. No. 16056

WD 76-58 FOR: Andrews Dev. Co. P.B. 1034

NO.	REVISIONS	DATE
1	Revised RESAE (ADAMS DETAIL) CIVIL	5-17-76
2	Added paving section	5-17-76
3	Revised for final ADAMS DETAIL	5-17-76

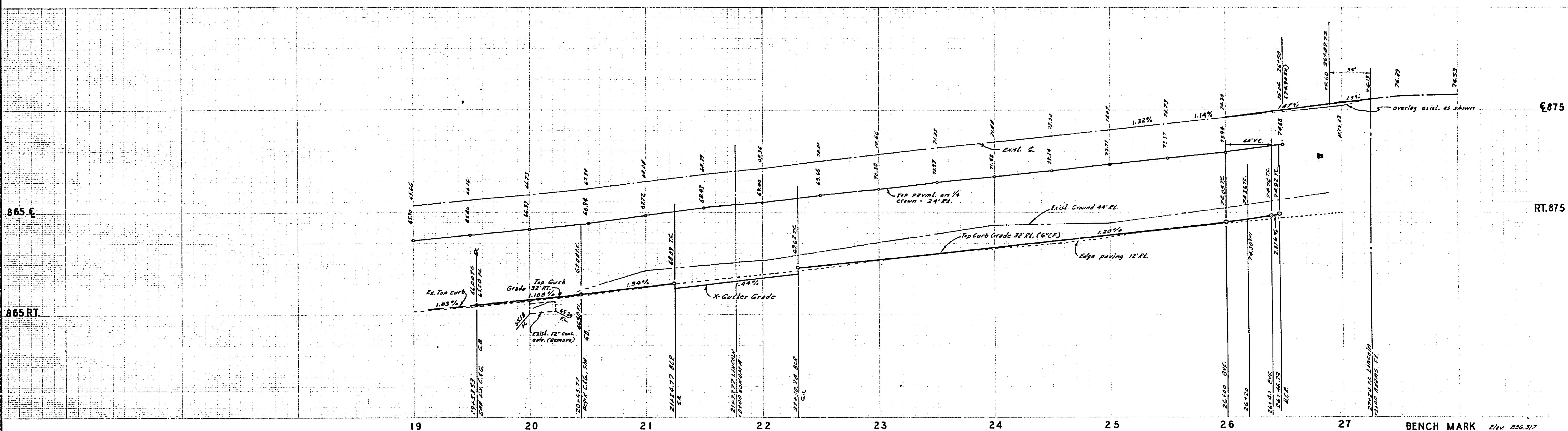
CITY OF RIVERSIDE, CALIFORNIA
PUBLIC WORKS DEPARTMENT

APPROVED BY: *[Signature]* DATE: 1-31-77
PRINCIPAL ENGINEER
TRAFFIC DIVISION
CHIEF PUBLIC WORKS ENGINEER

STREET PLAN AND PROFILE
ADAMS STREET
TRACT NO. 7640

ACCOUNT NO. DRAWING NUMBER
R-1929
SHEET 2 OF 6

SCALE: 1"=40' HORIZ, 1"=4' VERT.
76-58-A



865 E
865 RT
19 20 21 22 23 24 25 26 27

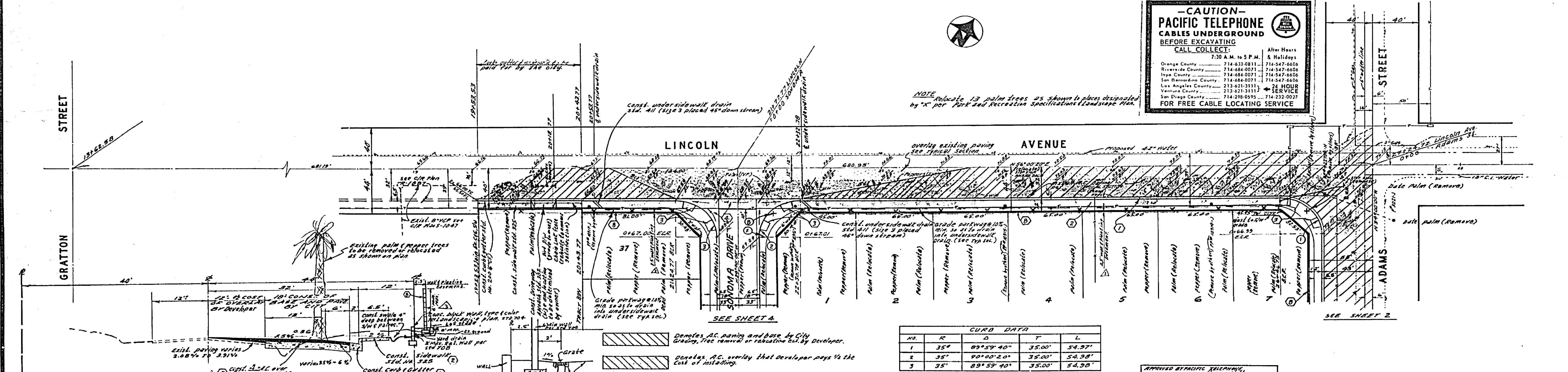
BENCH MARK Elev. 856.317
SEE SHEET #2 FOR GENERAL NOTES
SEE SHEET #1 FOR CONSTRUCTION NOTES

—CAUTION—
PACIFIC TELEPHONE
CABLES UNDERGROUND
BEFORE EXCAVATING
CALL COLLECT

After Hours
7:30 A.M. to 5 P.M. & Holidays

Orange County 714-633-0811 714-547-0656
Riverside County 714-684-0071 714-547-0656
Inyo County 714-684-0071 714-547-0656
San Bernardino County 714-684-0071 714-547-0656
Los Angeles County 213-621-3111 24 HOUR SERVICE
Ventura County 213-621-3111
San Diego County 714-738-0955 714-232-0037

FOR FREE CABLE LOCATING SERVICE



CURB DATA

NO.	IC	D	T	L
1	35"	89°59'40"	35.00'	54.97'
2	35"	90°00'20"	35.00'	54.98'
3	35"	89°59'40"	35.00'	54.98'

ALBERT A. WEBB ASSOCIATES
CIVIL ENGINEERS
RIVERSIDE, CALIFORNIA

APPROVED BY: [Signature] DATE: 4-30-76
R.E. No. 16056
W.O. 76-58 FOR ANDREWS DES. Co. P.E. 1034

CITY OF RIVERSIDE, CALIFORNIA
PUBLIC WORKS DEPARTMENT

APPROVED BY: [Signature] DATE: 1-21-77
PRINCIPAL ENGINEER
PARK DEPARTMENT
TRAFFIC DIVISION
CHIEF PUBLIC WORKS ENGINEER
PLANNING DEPT.

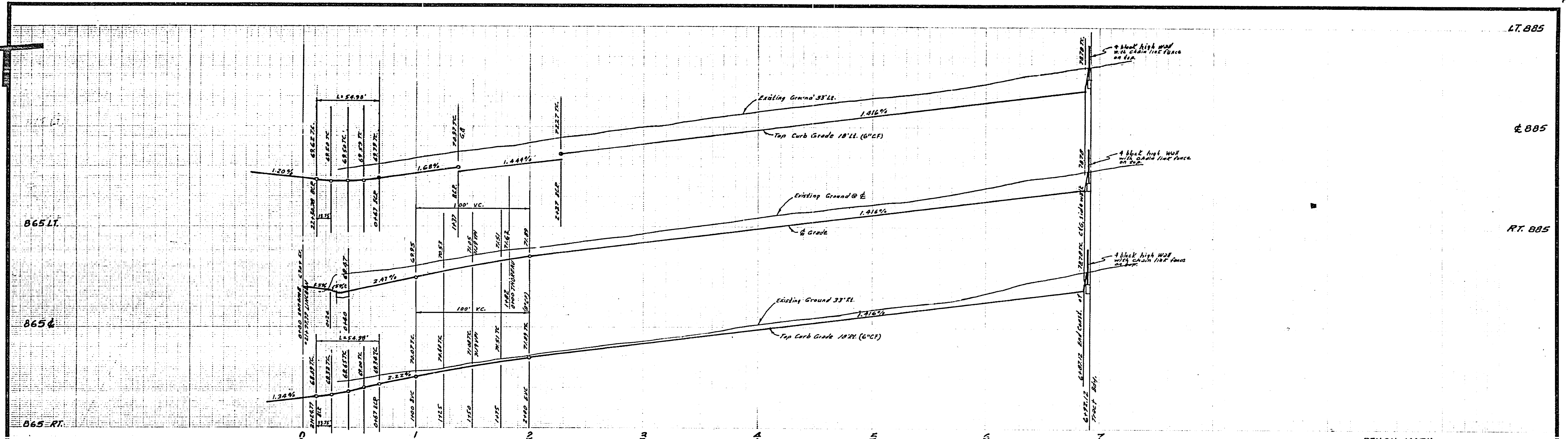
STREET PLAN AND PROFILE
LINCOLN AVENUE
TRACT NO. 7640

ACCOUNT No. R-1929
DRAWING NUMBER
SHEET 3 OF 6
76-58-A

SCALE: 1"=40' HORIZ., 1"=4' VERT.

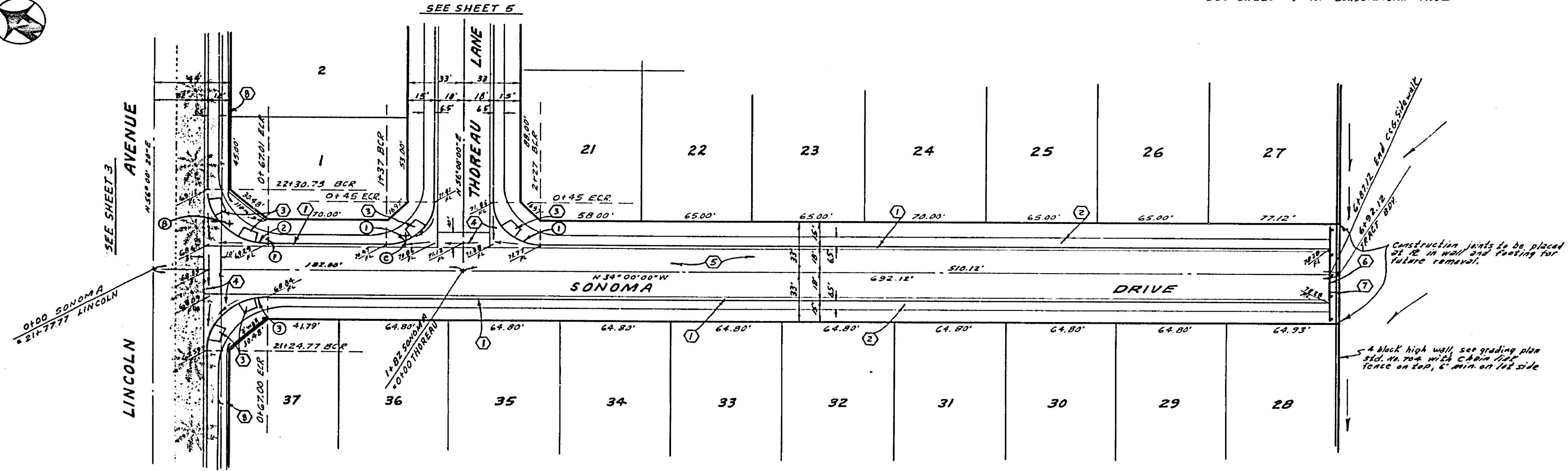
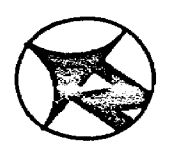
TYPICAL SECTION
LINCOLN AVENUE
T.I. 7

YARD DRAINAGE DETAIL LOTS 1-7 & 37
NO SCALE



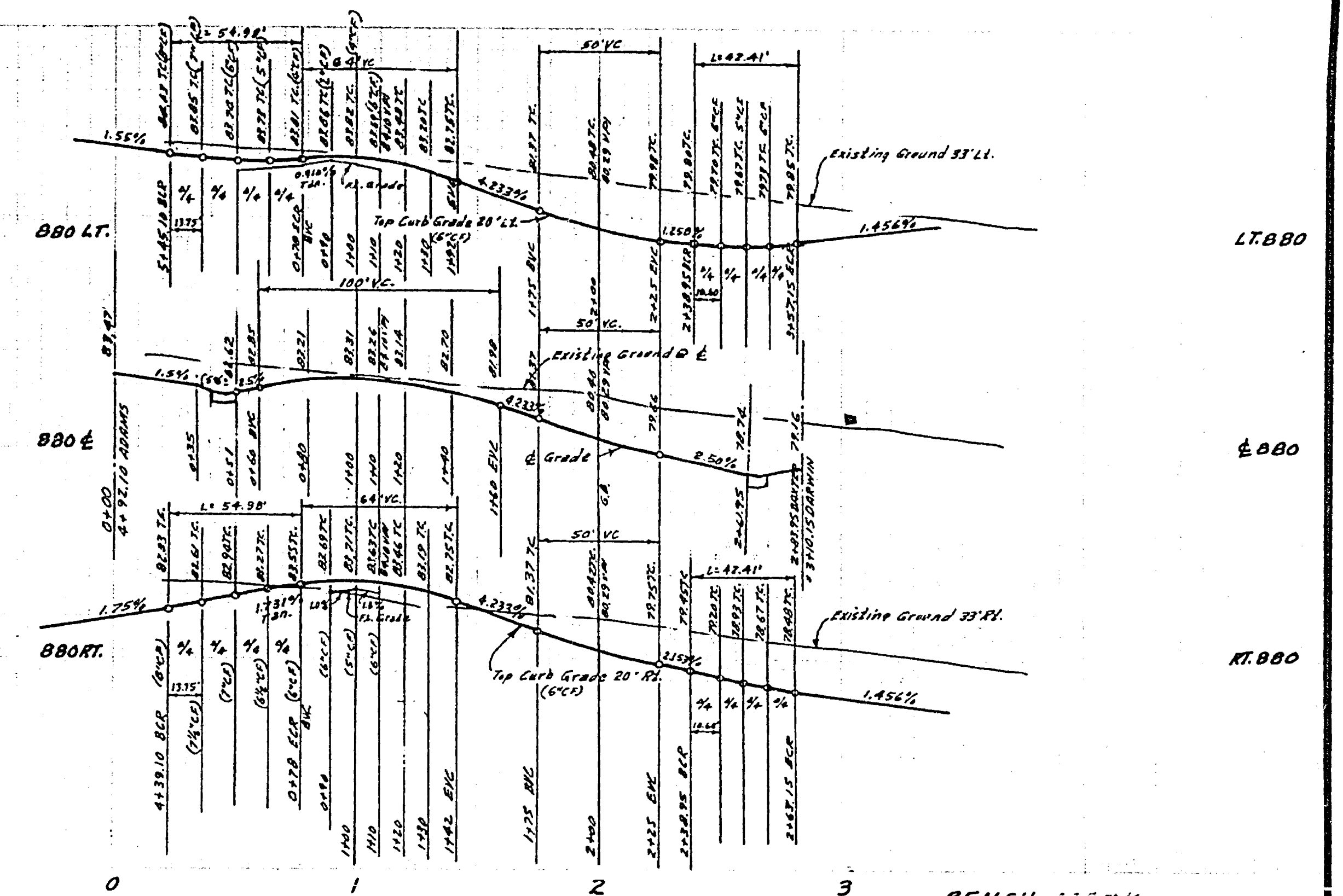
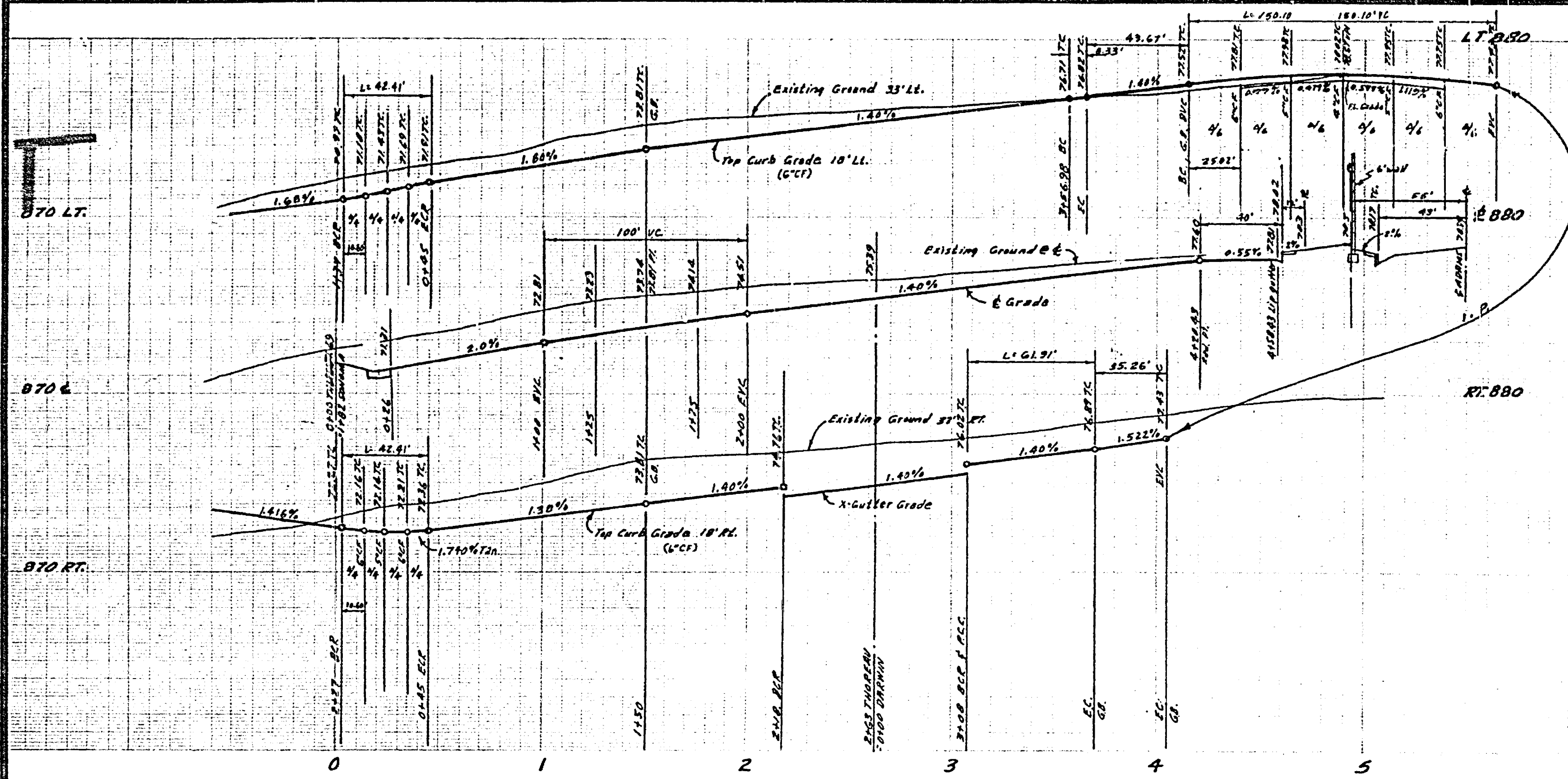
BENCH MARK Elev. 846.317
 1st. on map flag in conc. curb adjacent to a dirt driveway @ Adams St. N.W. of Victoria Ave. C.R. 129/19

See Sheet #2 for General Notes
 See Sheet #1 for Construction Notes



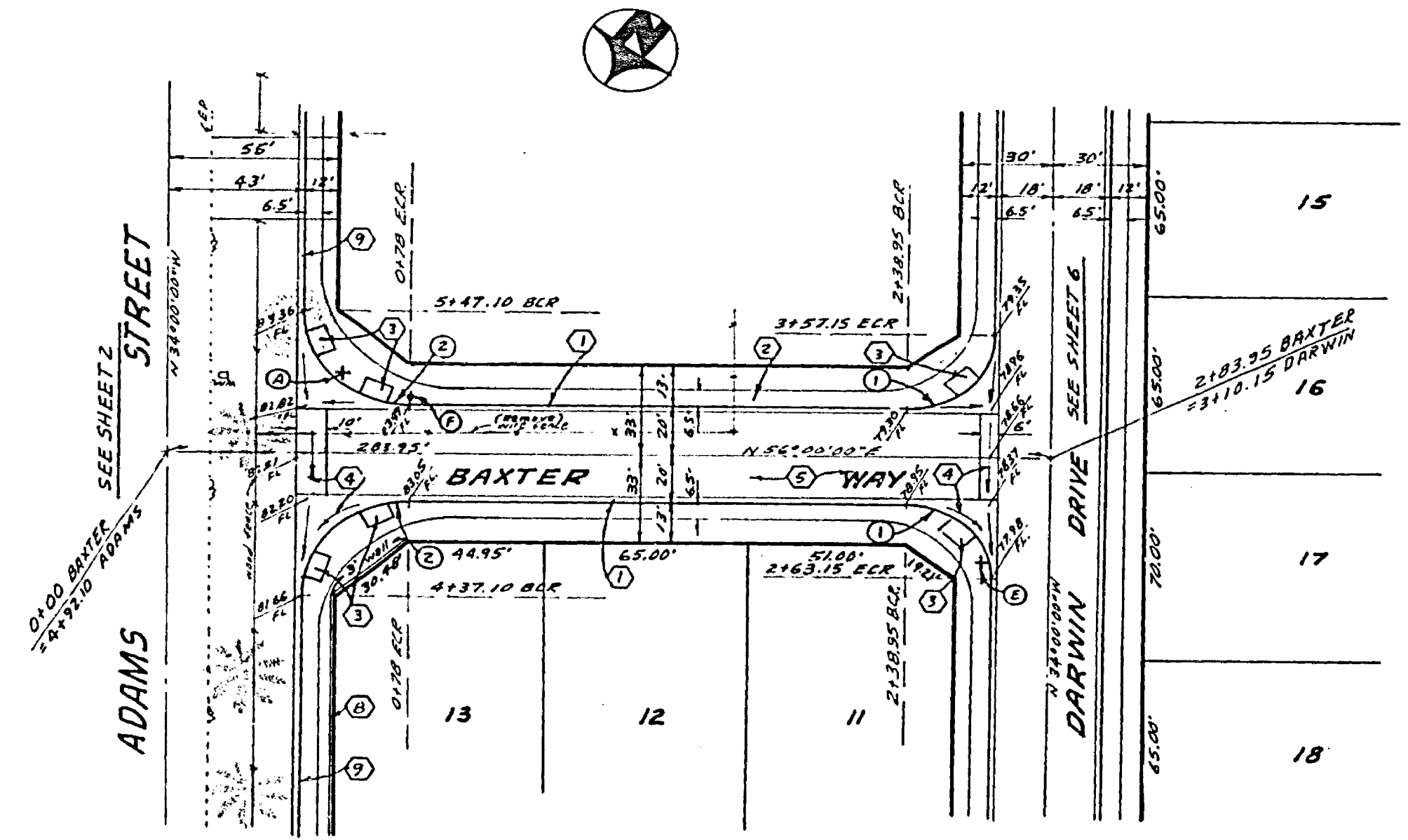
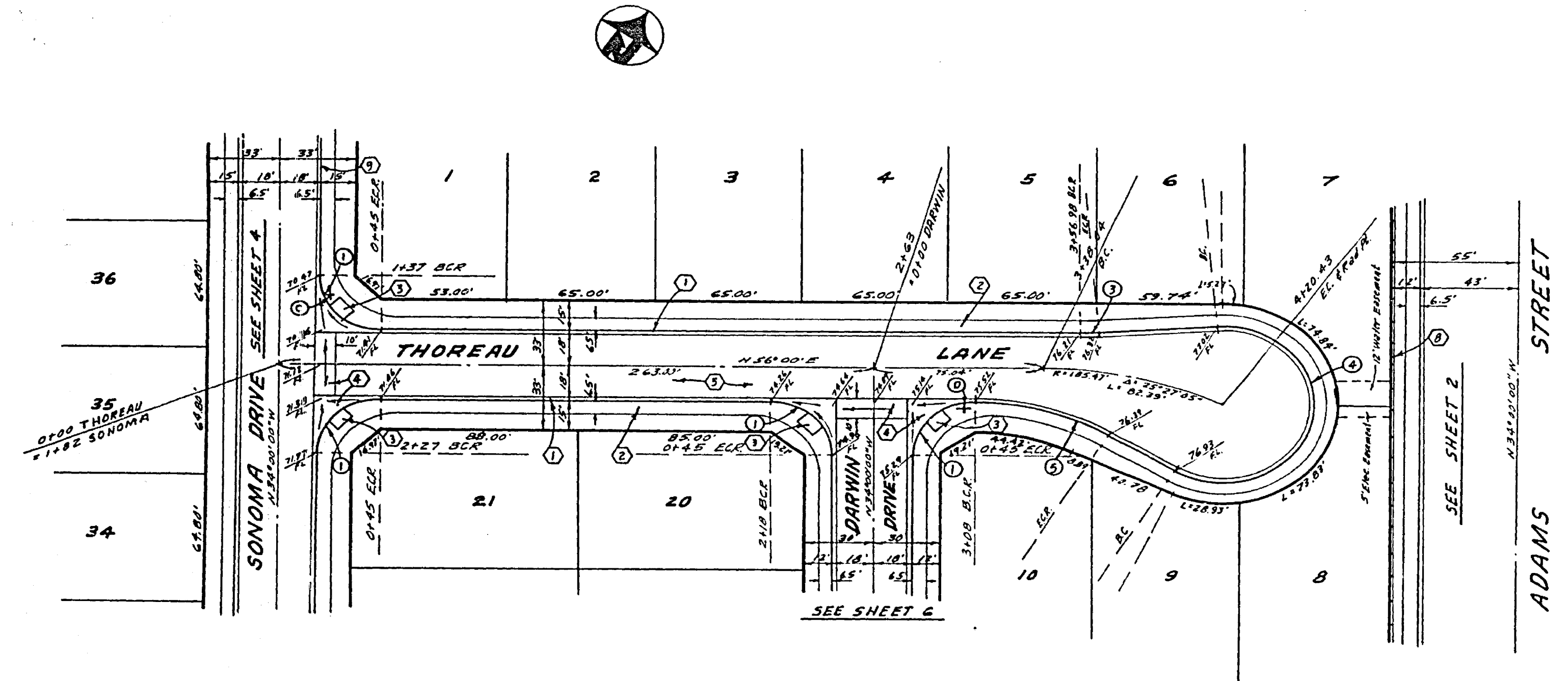
CURB DATA				
No.	R	A	T	L
1	27'	90°00'00"	27.00'	42.41'
2	35'	90°00'20"	35.00'	54.38'
3	35'	89°59'40"	35.00'	54.38'

ALBERT A. WEBB ASSOCIATES CIVIL ENGINEERS RIVERSIDE, CALIFORNIA APPROVED BY: <i>[Signature]</i> DATE 4-30-76 R.E. No. 16056	W.O. 76-58 FOR: Andrews Dev. Co. F.B. 1934	DESIGNED BY: <i>[Signature]</i> DRAWN BY: <i>[Signature]</i> CHECKED BY: <i>[Signature]</i>	CITY OF RIVERSIDE, CALIFORNIA PUBLIC WORKS DEPARTMENT		ACCOUNT NO.
			APPROVED BY: <i>[Signature]</i> DATE 1-21-77 PRINCIPAL ENGINEER TRAFFIC DIVISION CHIEF PUBLIC WORKS ENGINEER	APPROVED BY: <i>[Signature]</i> DIRECTOR OF PUBLIC WORKS	DRAWING NUMBER SONOMA DRIVE TRACT NO. 7640 SHEET 4 OF 6 76-58-A



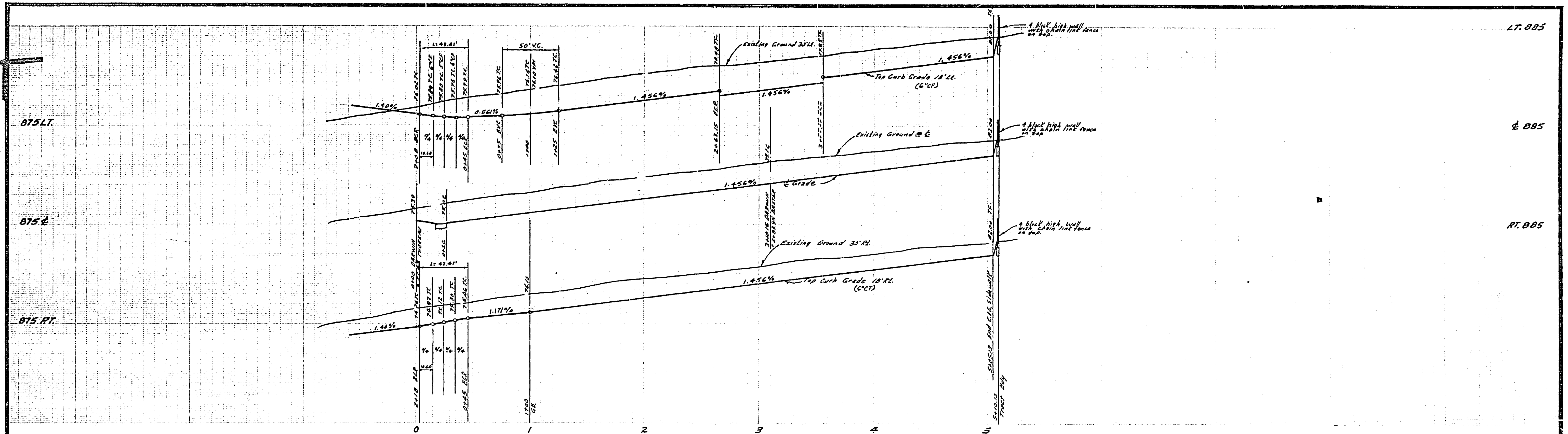
SEE SHEET # FOR GENERAL NOTES
SEE SHEET # FOR CONSTRUCTION NOTES

BENCH MARK ELEV. 896.317
455' P.M. 1941 & 450' I.M. CONE CURB ADJACENT TO
S. END OF DARWIN & ADAMS ST. 40' W. OF HISTORY
AVE. C.R. F.D. 733/79.



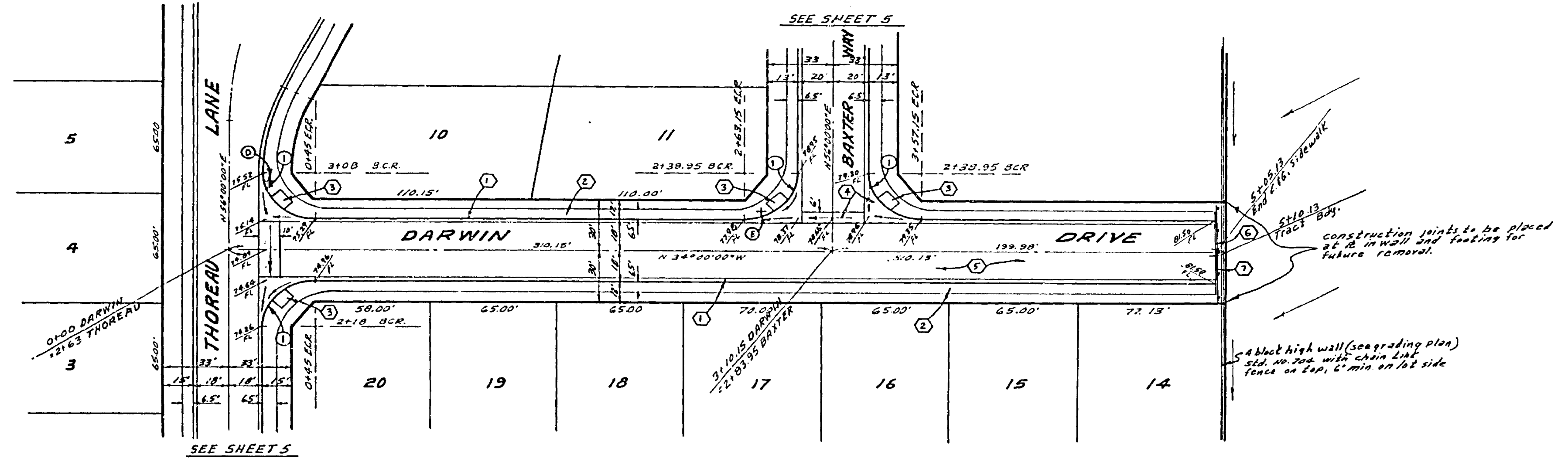
CURB DATA				
NO.	R	A	T	L
1	27'	90°00'00"	27.00'	42.41'
2	35'	90°00'00"	35.00'	54.98'
3	115'	8°00'00"	4.17'	8.73'
4	40'	21°45'43"	15.10'	15.10'
5	115'	30°50'43"	31.36'	61.91'

ALBERT A. WEBB ASSOCIATES CIVIL ENGINEERS RIVERSIDE, CALIFORNIA APPROVED BY: <i>L.P. [Signature]</i> DATE: 4-30-76 R.E. No. 16056 W.D. 76-58 FOR: Andrews Dev. Co. F.B. 1036		CITY OF RIVERSIDE, CALIFORNIA PUBLIC WORKS DEPARTMENT APPROVED BY: <i>[Signature]</i> DATE: 4-30-76 PARK DEPARTMENT TRAFFIC DIVISION CHIEF PUBLIC WORKS ENGINEER DATE: 1-3-77		STREET PLAN AND PROFILE THOREAU LANE BAXTER WAY TRACT NO. 7640 SCALE: 1" = 40' HORIZ. - 1" = 4' VERT.		ACCOUNT NO. R-1929 SHEET 5 OF 6 76-58-A
--	--	--	--	---	--	--



BENCH MARK Elev. 896.317
 E.S.P. P.K. nailless in conc. curb adjacent to
 4' high driveway @ Adams St. N.W. of Victoria
 Ave. OR # 2 739/75

SEE SHEET # 2 FOR GENERAL NOTES
 See Sheet # 1 for Construction Notes



CURB DATA				
NO.	R	Δ	T	L
1	27'	90°00'00"	27.00'	42.41'

ALBERT A. WEBB ASSOCIATES
 CIVIL ENGINEERS
 RIVERSIDE, CALIFORNIA
 APPROVED BY: *[Signature]* DATE 4-30-76
 R.E. No. 16856

NO.	REVISIONS	APP.	DATE

CITY OF RIVERSIDE, CALIFORNIA
 PUBLIC WORKS DEPARTMENT
 APPROVED BY: *[Signature]* DATE 4-30-76
 DIRECTOR OF PUBLIC WORKS

STREET PLAN AND PROFILE
DARWIN DRIVE
 TRACT NO 7640

ACCOUNT No.
 DRAWING NUMBER
R-1929
 SHEET 6 OF 6
 76-58-A

SCALE: 1" = 48' Horiz. - 1" = 4' Vert.