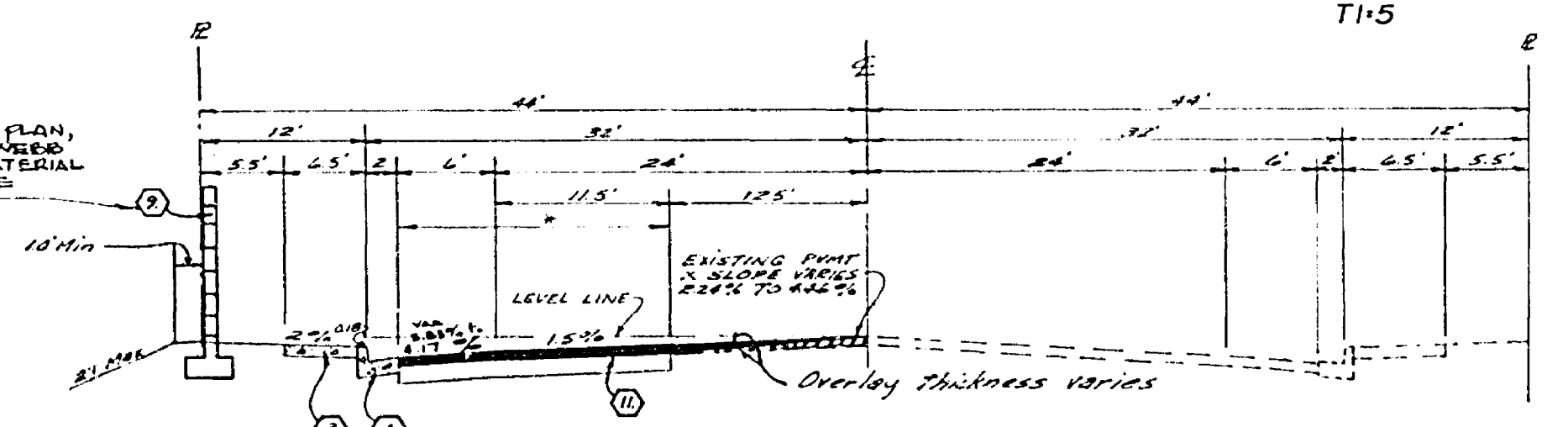


STREET NAME	TRAFFIC SIGN SCHEDULE
A MONROE ST	2900
LIMESTONE DR	8600
JAMESTOWN DR	2900
B LIMESTONE DR	8500
YORKTOWN PL	2900
C LIMESTONE DR	8600
HARRISBURG PL	2900
D LIMESTONE DR	8500
GRATTON ST	2900
E LIMESTONE DR	8400
F JAMESTOWN DR	2900
G LINCOLN AVE	8600
<b>G R I (STOP SIGN) 24 OCTAGON</b>	
<b>H W 53 (NOT A THROUGH ST) 24x24</b>	
I GRATTON ST	2900
LINCOLN AVE	8500

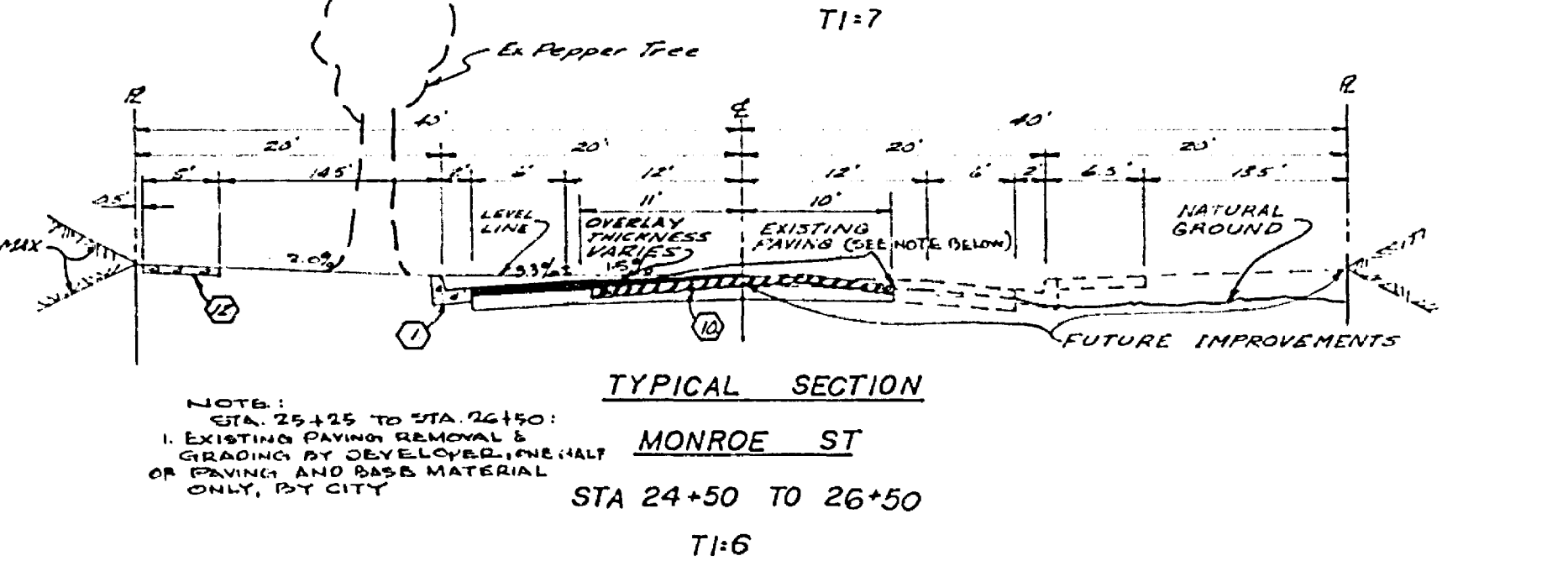
INDEX MAP  
SCALE 1"=100'

NOTE: REFER TO LANDSCAPE PLAN, PREPARED BY THOMAS R. WOOD AS L.A. FOR TYPE AND MATERIAL OF RELIEVE FRONTAGE BLOCK WALLS.



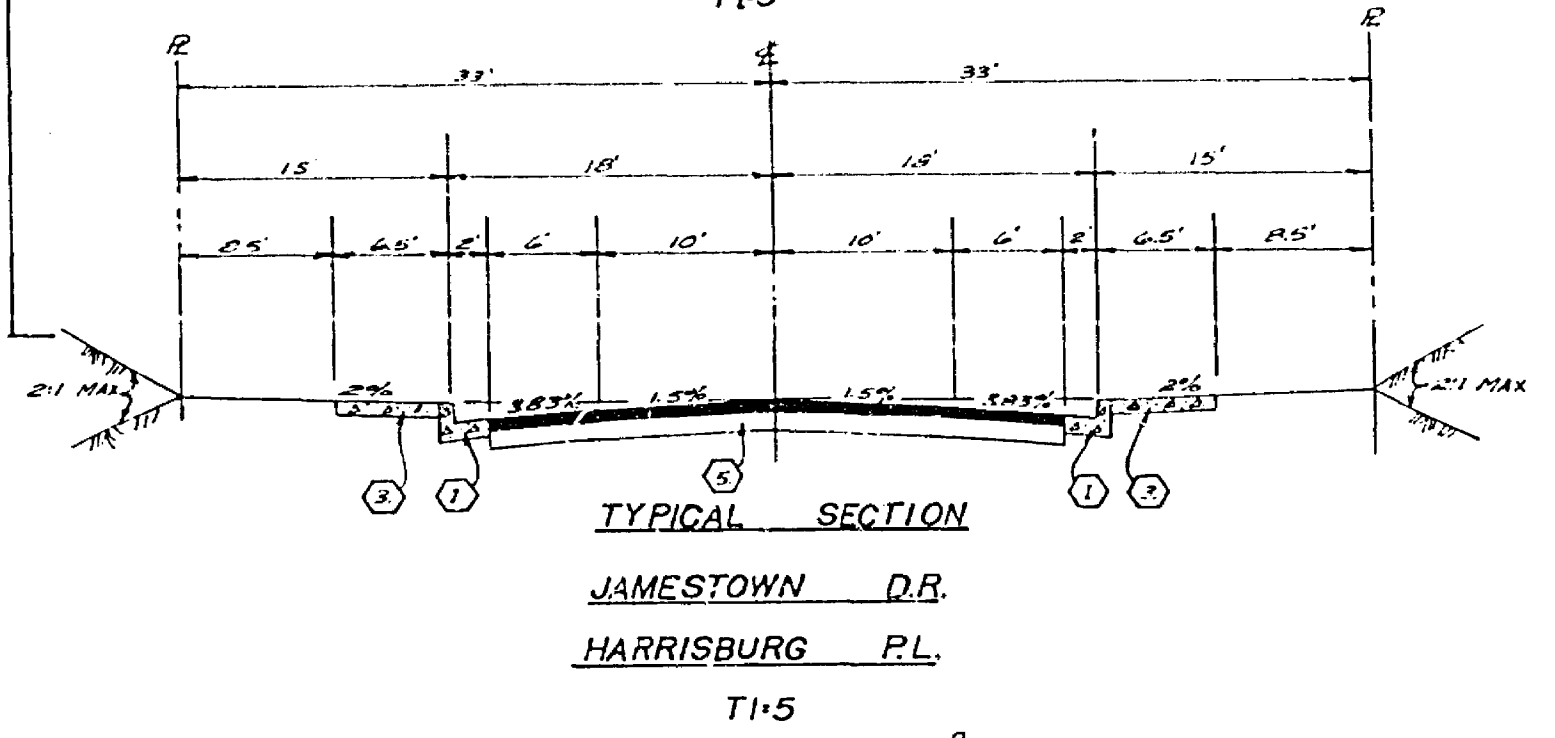
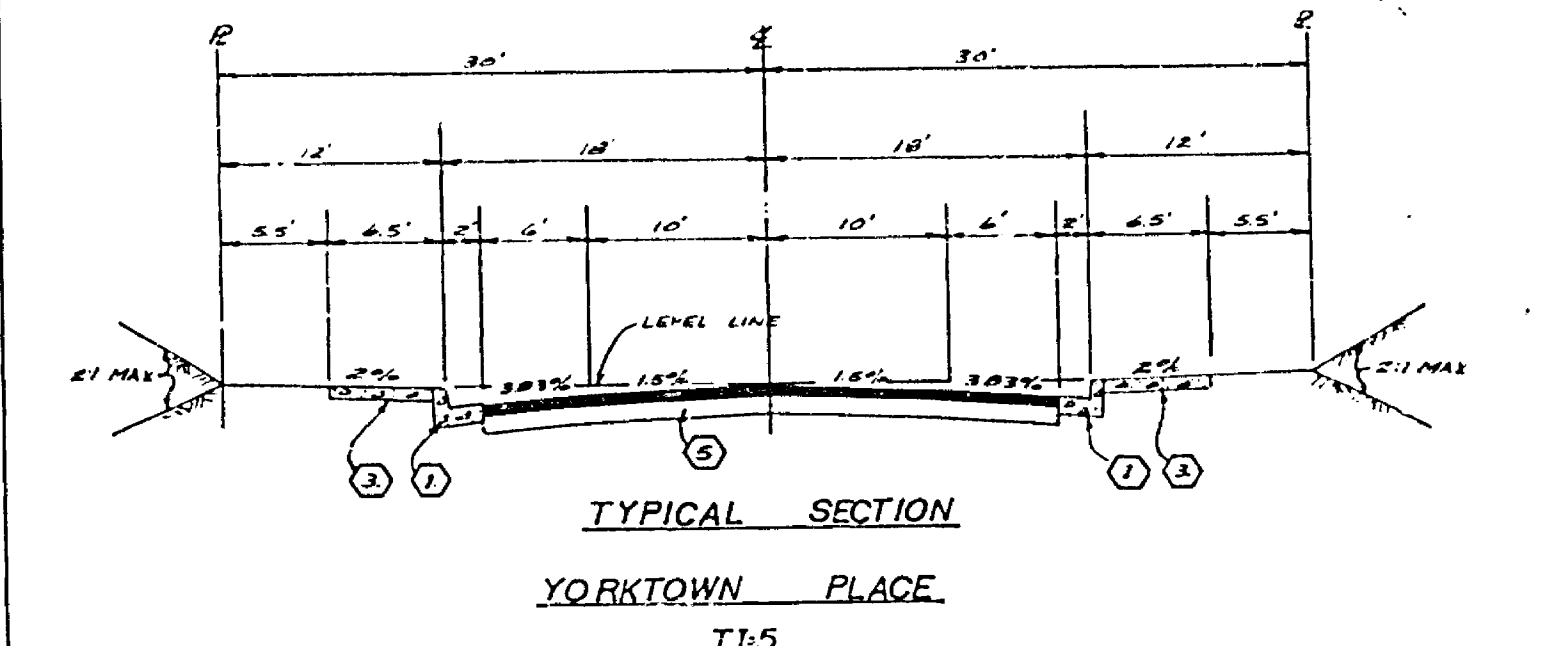
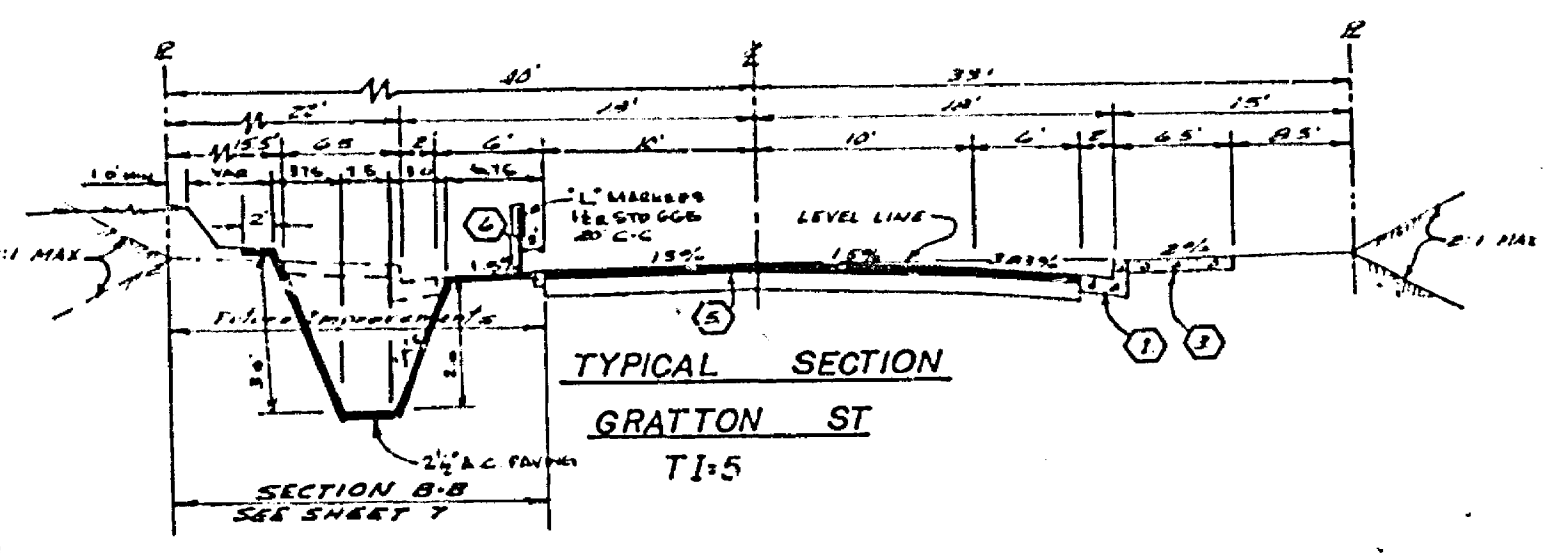
\* CITY TO INSTALL MATCHING PAVING AND BASE GRADING BY DEVELOPER.

THE DEVELOPER AND THE CITY SHALL SHARE THE COST OF OVERLAY ON A 50-50 BASIS.



NOTE: STA. 25+25 TO STA. 26+50: 1. EXISTING PAVING REMOVAL & GRADING BY DEVELOPER. 2. HALF OR PAVING AND BASE MATERIAL ONLY, BY CITY.

Note: typical sections are not to scale

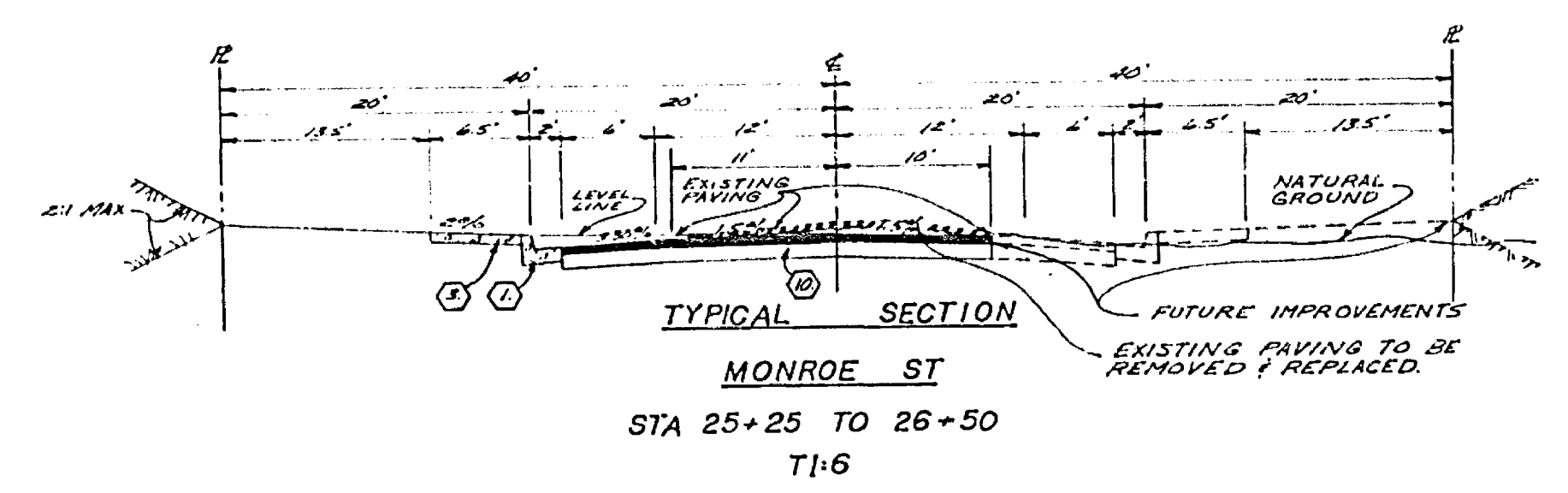


GENERAL NOTES

- Construction shall be in accordance with the Standard Specifications for Public Works Construction, 1976 edition, and per City of Riverside Standard Drawings.
- All flagged elevations shall be stated in the field by the Engineer.
- The subdivider shall arrange for a cut test to be made by a Soil's Engineer after the spreads have been prepared to rough grade. Depth of base material and P.C. paving shall be determined by the City of Riverside design standards and past precedents.
- Driveway approaches shall be located in the field and constructed per City of Riverside Standard No. 302 (A-20, B-27). Location to be determined by line of construction by the developer and as approved by the traffic engineer.
- Curb will be staked at 25' intervals and 3' offsets where grades are cuts or greater. Curb having grades less than cuts will be staked at 12.5' intervals and 3' offsets. In addition, on curb grades of less than cuts, two rows of 2" x 4" framing bars will be placed in the gutter and 12" all curbs with less than cuts grade, 3/4" solid steel curbs will be required at all expansion joints.
- Traffic control signs must be in place prior to opening streets to traffic.
- It shall be the responsibility of the contractor to clear the right of way in accordance with the provisions of law as it affects each utility, including irrigation lines and appurtenances and at no cost to the City.
- See "Street Lighting Plans" for number and location of required Street Lights.
- Trim edge of existing pavement where new pavement joins to a smooth straight line. Construct match up paving as shown on plans and overlay paving as directed in the field to produce a smooth section. Engineer Estimates Overlay to be 12L Tons.
- In order to coordinate the City portion of the work the Developer shall give the City 45 days notice in order that the developer and City work may be installed concurrently.
- See Land survey and sprinkler system plans for Parkway on Lincoln Ave.
- 4" x 4" blockouts for mail boxes required for curb sidewalk.
- The Developer is to coordinate the installation of access paving on Lincoln with the City Construction Inspector.

CONSTRUCTION NOTES

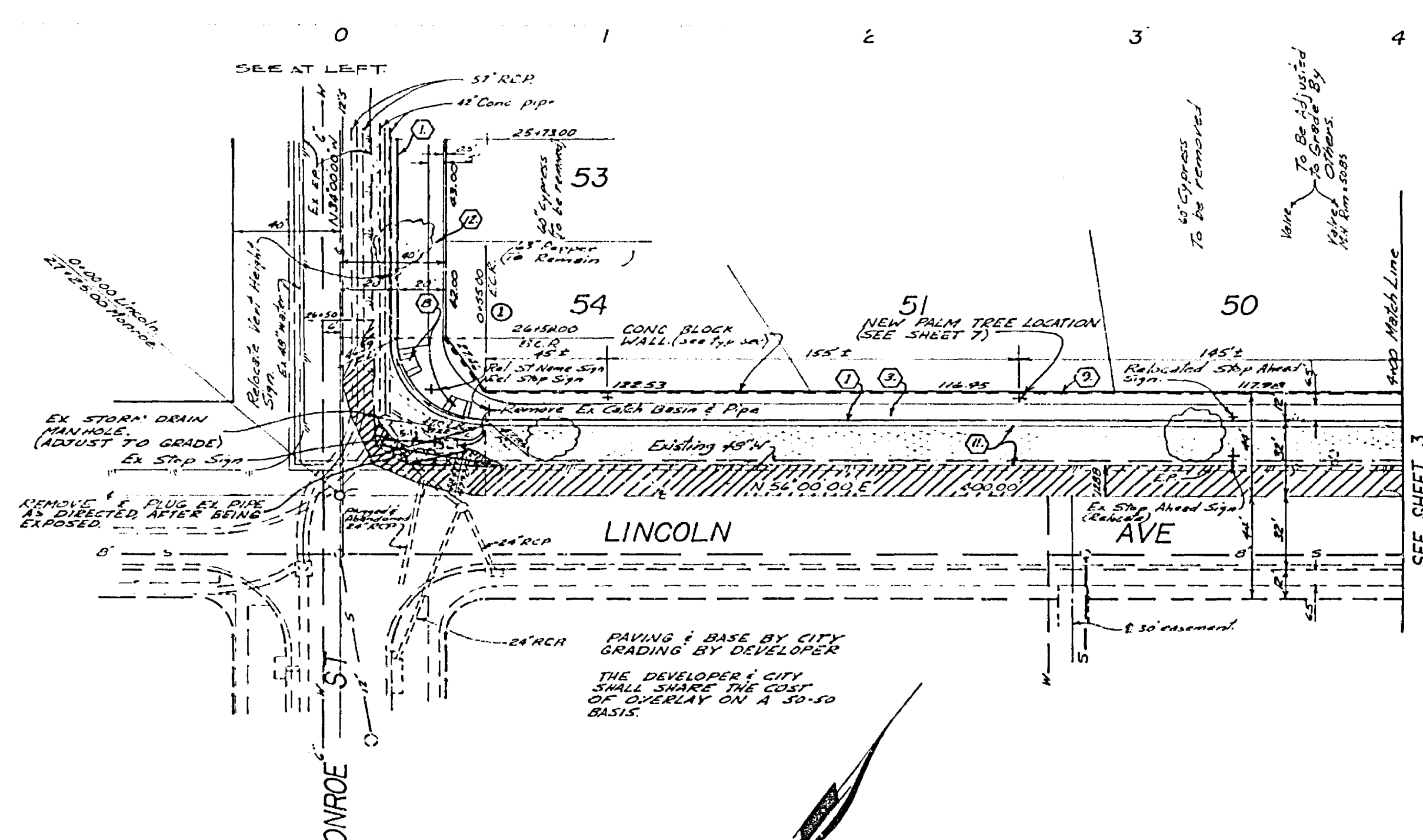
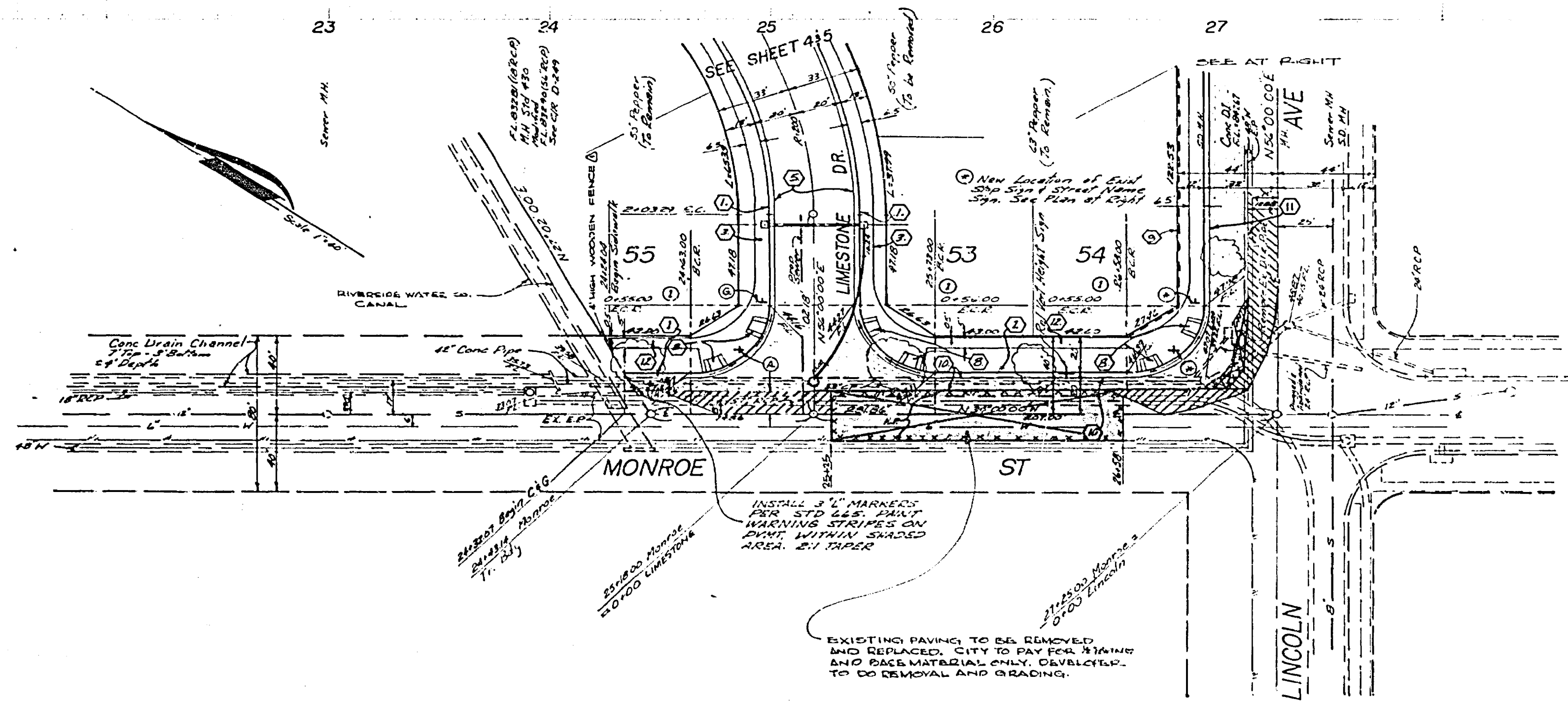
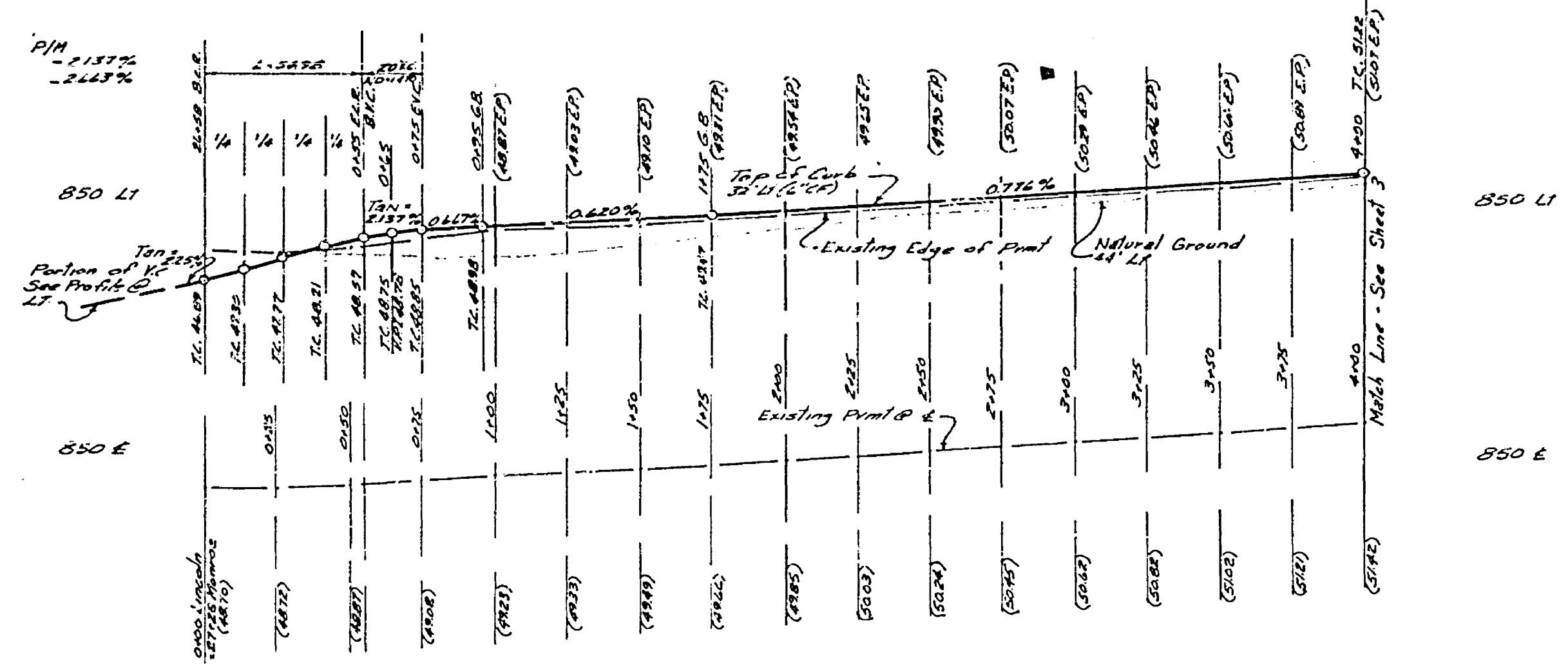
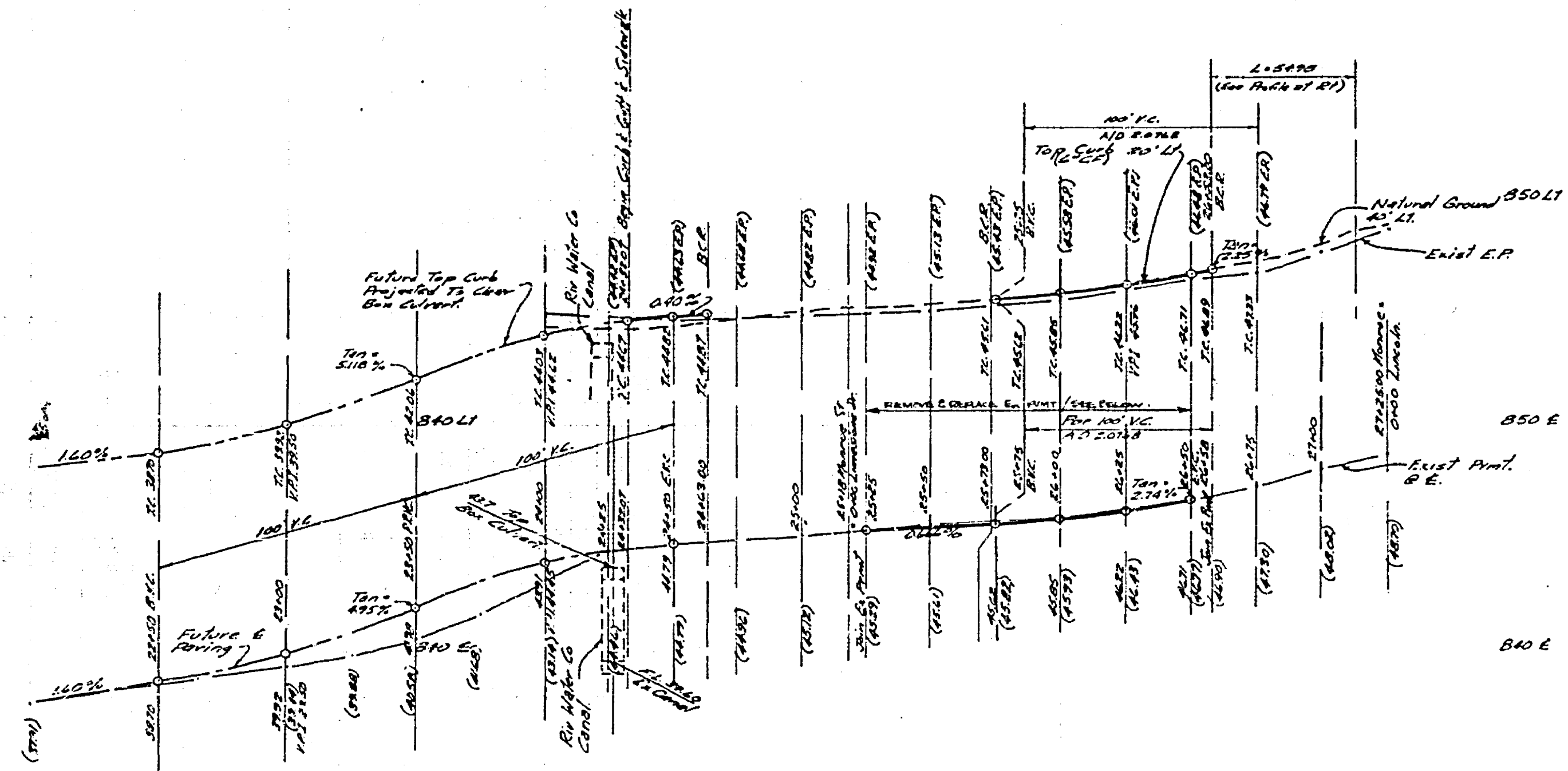
- Construct P.C. Curb and Gutter per Riverside City Std No 200 (6" CIP).
- Construct AC Base Per G.R. Std No 550 (Type 1)
- Construct 6" P.C. Curb Sidewalk per Riverside City Std No 325.
- Construct P.C. Cross Gutter per Riverside City Std No 220. (width shown)
- Construct 2 1/2" A.C. Pavement over 4" D.G. Base or 3 1/2" A.C. Pavement over compacted native.
- Place 2" x 4" Redwood M.R.
- Construct Barricade per Riverside City Std No 400.
- Construct Wheelchair Ramp per Riverside City Std No 304.
- Construct Concrete Block Wall Per Riverside City Std 700. (REFER TO TYPICAL SECTION) LINCOLN DIVISION
- Construct 3" A.C. Pavement over 4" D.G. Base or 4 1/2" A.C. Pavement over compacted native.
- Construct 4" A.C. Pavement over 4" D.G. Base or 5 1/2" A.C. Pavement over compacted native.
- Construct 5" P.C. Property Line Sidewalk per G.R. Std No 325.



STA 25+25 TO 26+50  
T1:6

BM (F5H) Elev = 845.599  
PK nail in RMC canal headwall on Wly side of Monroe Street. dia #3 @ 8' on center.

ALBERT A. WEBB ASSOCIATES CIVIL ENGINEERS RIVERSIDE, CALIFORNIA		CITY OF RIVERSIDE, CALIFORNIA PUBLIC WORKS DEPARTMENT		STREET PLAN & PROFILE	
APPROVED BY: <i>Albert A. Webb</i> DATE: 8/5/76		APPROVED BY: <i>[Signature]</i> DATE: 1-21-77		TRACT NO 7873	
R.E. No. 20725		MARK DEPARTMENT TRAFFIC DIVISION CHIEF PUBLIC WORKS ENGINEER		INDEX SHEET	
W.O. 75-141 FOR VANDERBILT EMPLOYEES		DESIGNED BY: DE. DRAWN BY: L.R.M. CHECKED BY: G.M.		ACCOUNT No. R-1932	
FD. 1026		PLANNING		SHEET 1 OF 7	
		SCALE: As Shown.		75-161-A	



**CURVE DATA**

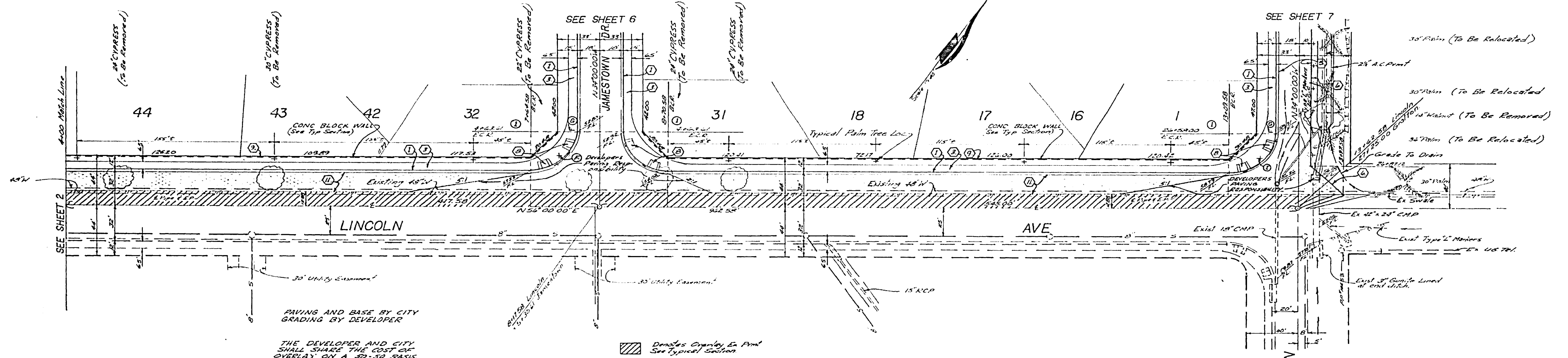
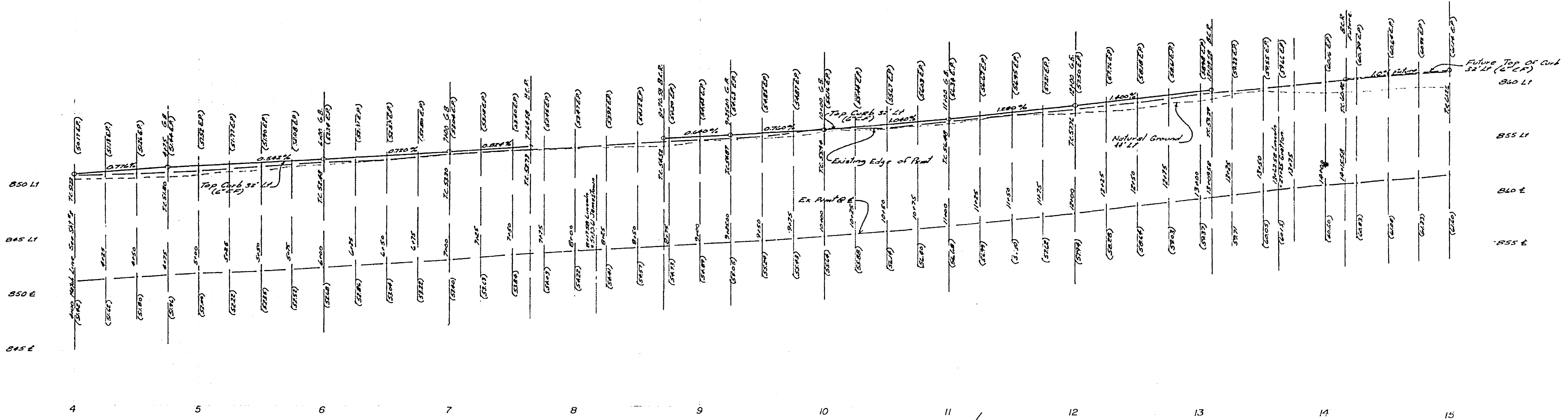
NO	Δ	R	T	L
1	90°00'00"	35'	35'	34.78'

- Denotes Overlay Ex Pmt See Typical Section
- Denotes Removal Ex Pmt See Typical Section

SEE SHEET NO 1 FOR GENERAL CONSTRUCTION NOTES.

BM (FSH) Elev = 845.599  
 Pk nail & tag in RWC canal headwall on W side of Monroe Street. 4/27/83.

<p><b>ALBERT A. WEBB ASSOCIATES</b>          CIVIL ENGINEERS          RIVERSIDE, CALIFORNIA</p> <p>APPROVED BY: <i>Albert A. Webb</i> DATE: 8/9/76          R.E. No. 2276</p> <p>W.D. 75-61 FOR Woodway Enterprises P.B. 1026</p>	<p><b>CITY OF RIVERSIDE, CALIFORNIA</b>          PUBLIC WORKS DEPARTMENT</p> <p>APPROVED BY: <i>[Signature]</i> DATE: 1-21-77          DIRECTOR OF PUBLIC WORKS</p> <p>DESIGNED BY: <i>[Signature]</i> DRAWN BY: <i>[Signature]</i> CHECKED BY: <i>[Signature]</i></p>	<p><b>STREET PLAN &amp; PROFILE</b>          TRACT NO 7873          MONROE ST          LINCOLN AVE.</p> <p>SCALE: Horiz 1"=40' Vert 1"=4'</p>	<p>ACCOUNT NO.          DRAWING NUMBER  <b>R-1932</b>          SHEET 2 OF 7          75-161-A</p>
---	--	---	---



CURVE DATA

NO	Δ	R	T	L
1	90°00'00"	35'	3500'	5498'

PAVING AND BASE BY CITY  
GRADING BY DEVELOPER

THE DEVELOPER AND CITY  
SHALL SHARE THE COST OF  
OVERLAY ON A 50-50 BASIS.

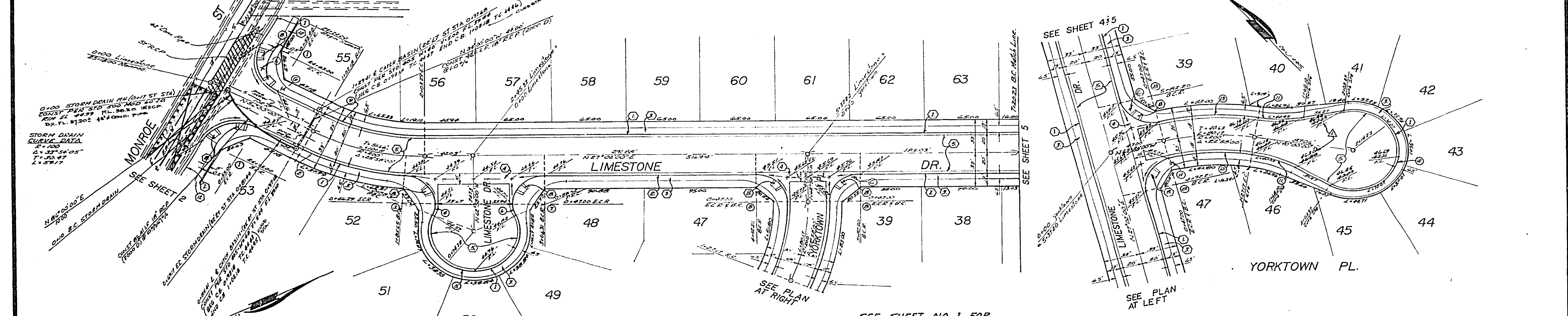
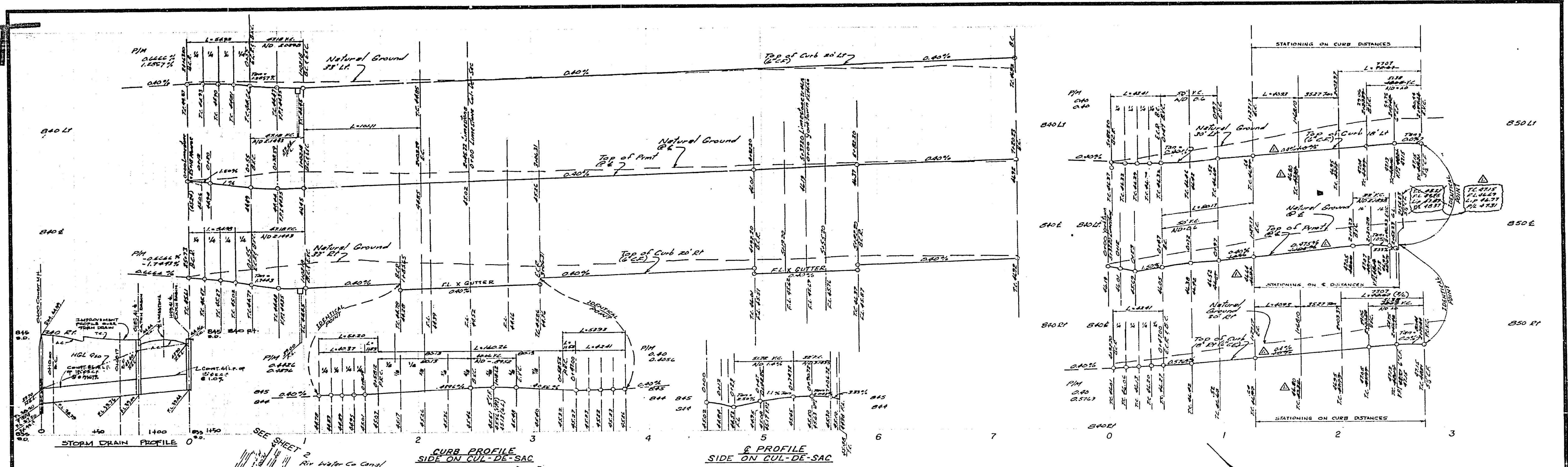
Driveway Curb In Pmt  
See Typical Section

SEE SHEET NO 1 FOR  
GENERAL & CONSTRUCTION  
NOTES.

BM (F.S.H.) Elev = 845.599  
PK nail tag in RMC canal headwall  
on WLY side of Monroe Street.  
C/R R.G. 830/83.

\*AG BUILT 8-77 KFT

<b>ALBERT A. WEBB ASSOCIATES</b> CIVIL ENGINEERS RIVERSIDE, CALIFORNIA APPROVED BY: <i>[Signature]</i> DATE: 3/9/74 I.E. No. 20720		<b>CITY OF RIVERSIDE, CALIFORNIA</b> PUBLIC WORKS DEPARTMENT APPROVED BY: <i>[Signature]</i> DATE: 1-21-77 TRAFFIC DIVISION CHIEF PUBLIC WORKS ENGR PLANNING		<b>STREET PLAN &amp; PROFILE</b> TRACT NO 7873 LINCOLN AVE SCALE: Horiz 1"=40' Vert 1"=4' ACCOUNT NO. DRAWING NUMBER <b>R-1932</b> SHEET 3 OF 7 75-161-A	
W.D. 75-161 FOR: Woodhaven Enterprises T.B. 1036 DESIGNED BY: DA DRAWN BY: KCM CHECKED BY: BDL		REVISIONS APPR. DATE TRAFFIC DIVISION CHIEF PUBLIC WORKS ENGR PLANNING		DIRECTOR OF PUBLIC WORKS DATE: 1-21-77	



**CURVE DATA**

NO.	Δ	R	T	L
1	30°00'00"	35	35.00'	54.98'
2	37°35'00"	20	40.24'	34.10'
3	05°40'00"	27	25.02'	44.97'
4	28°02'44"	27	4.61'	11.81'
5	28°15'00"	40	—	140.82'
6	30°24'00"	27	5.85'	11.56'
7	30°00'00"	27	28.00'	48.91'
8	30°00'00"	27	28.00'	48.91'
9	28°38'00"	180	46.50'	91.00'
10	28°38'00"	180	46.50'	91.00'
11	28°22'00"	116	20.68'	40.93'
12	28°22'00"	116	20.68'	40.93'
13	28°22'00"	116	20.68'	40.93'

Double Orange Ex. Point See Typical Section  
 Double Removal Ex. Point See Typical Section

SEE SHEET NO. 1 FOR GENERAL & CONSTRUCTION NOTES.

**ALBERT A. WEBB ASSOCIATES**  
 CIVIL ENGINEERS  
 RIVERSIDE, CALIFORNIA  
 APPROVED BY: *[Signature]* DATE: 8/9/77  
 R.E. No. 0076

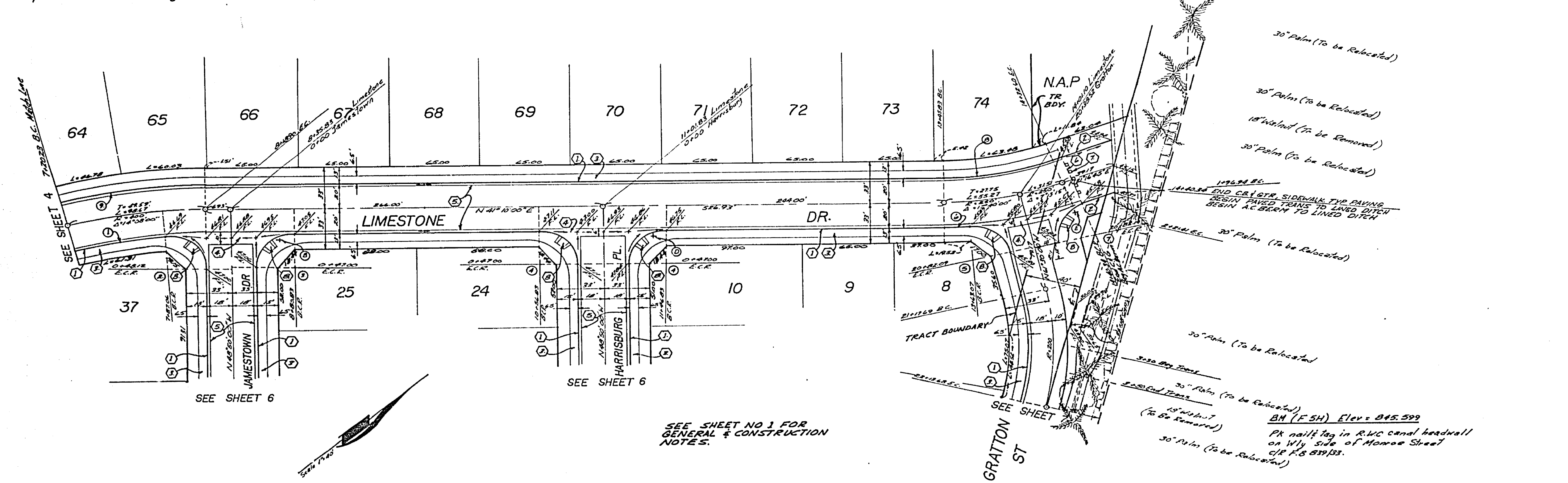
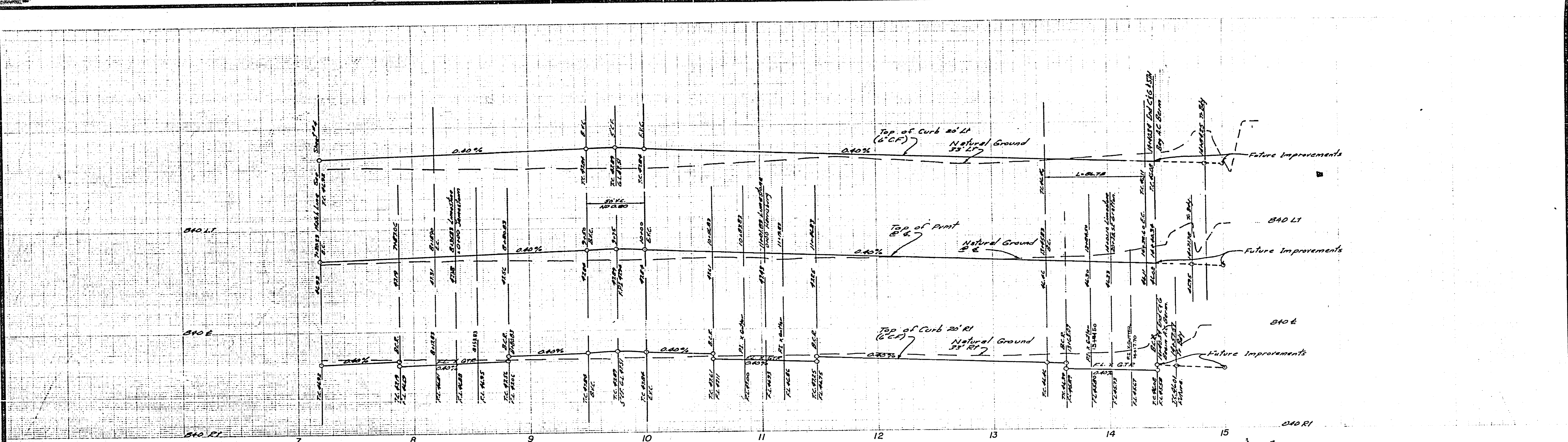
DESIGNED BY: D.B. DRAWN BY: L.H. CHECKED BY: Edg.  
 W.D. 75-141 FOR: Woodhaven Enterprises F.B. 1972

**CITY OF RIVERSIDE, CALIFORNIA**  
**PUBLIC WORKS DEPARTMENT**  
 APPROVED BY: *[Signature]* DATE: 8/22/77  
 PRINCIPAL ENGINEER  
 TRAFFIC DIVISION  
 CHIEF PUBLIC WORKS ENGINEER

**STREET PLAN & PROFILE**  
 TRACT NO. 7873  
 LIMESTONE DR.  
 YORKTOWN PL.  
 SCALE: HORIZ 1"=40' VERT 1"=4'  
 1-20-77 RD-  
 \* AS BUILT 8-77 KPT

ACCOUNT No. **R-1932**  
 DRAWING NUMBER  
**SHEET 4 OF 7**  
 75-141-A

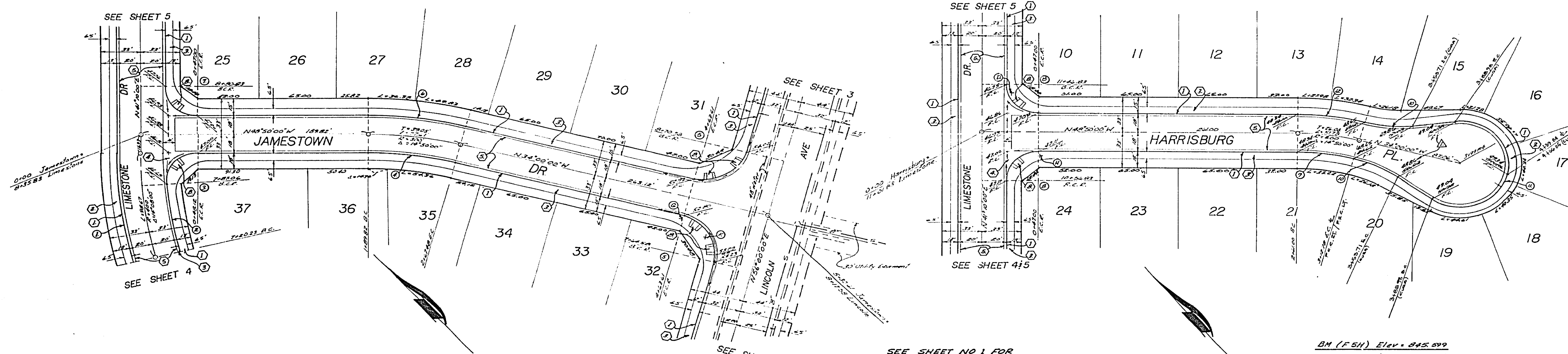
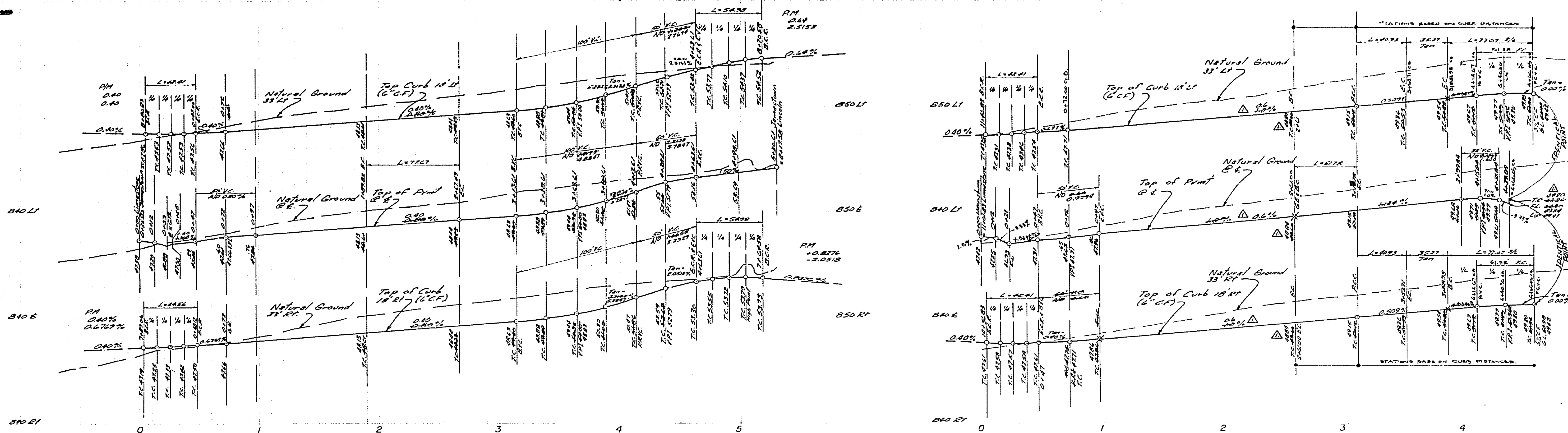
BM (F-54) Elev = 845.599  
 PK 2011.74 in R/W canal headwall on Wly side of Monroe Street. I.R. F.B. 88/83.



**CURVE DATA**

NO	Δ	R	T	L
1	14°18'00"	400	2710	9775
2	32°27'46"	27	2924	7456
3	90°00'00"	27	2700	4241
4	90°00'00"	-	2700	4241
5	81°05'04"	27	2909	58.81
6	2°27'04"	270	231	18.12
7	82°44'15"	27	2379	3907
8	18°53'15"	210	2612	7887
9	14°08'00"	280	3207	10260

<b>ALBERT A. WEBB ASSOCIATES</b> CIVIL ENGINEERS RIVERSIDE, CALIFORNIA APPROVED BY <i>P. J. Webb</i> DATE 8/4/76 R.E. No. 2276	<b>CITY OF RIVERSIDE, CALIFORNIA</b> <b>PUBLIC WORKS DEPARTMENT</b>		<b>STREET PLAN &amp; PROFILE</b> TRACT NO 7873 LIMESTONE DR	ACCOUNT NO. DRAWING NUMBER <b>R-1932</b> SHEET 5 OF 7
	APPROVED BY <i>[Signature]</i> PRINCIPAL ENGINEER DATE 1-31-77	APPROVED BY <i>[Signature]</i> DIRECTOR OF PUBLIC WORKS DATE 1-31-77	#49 BUILT 8-77 MBT SCALE: HORIZ 1"=40' VERT 1"=4'	DESIGNED BY <i>RB</i> DRAWN BY <i>L.C.G.</i> CHECKED BY <i>[Signature]</i>



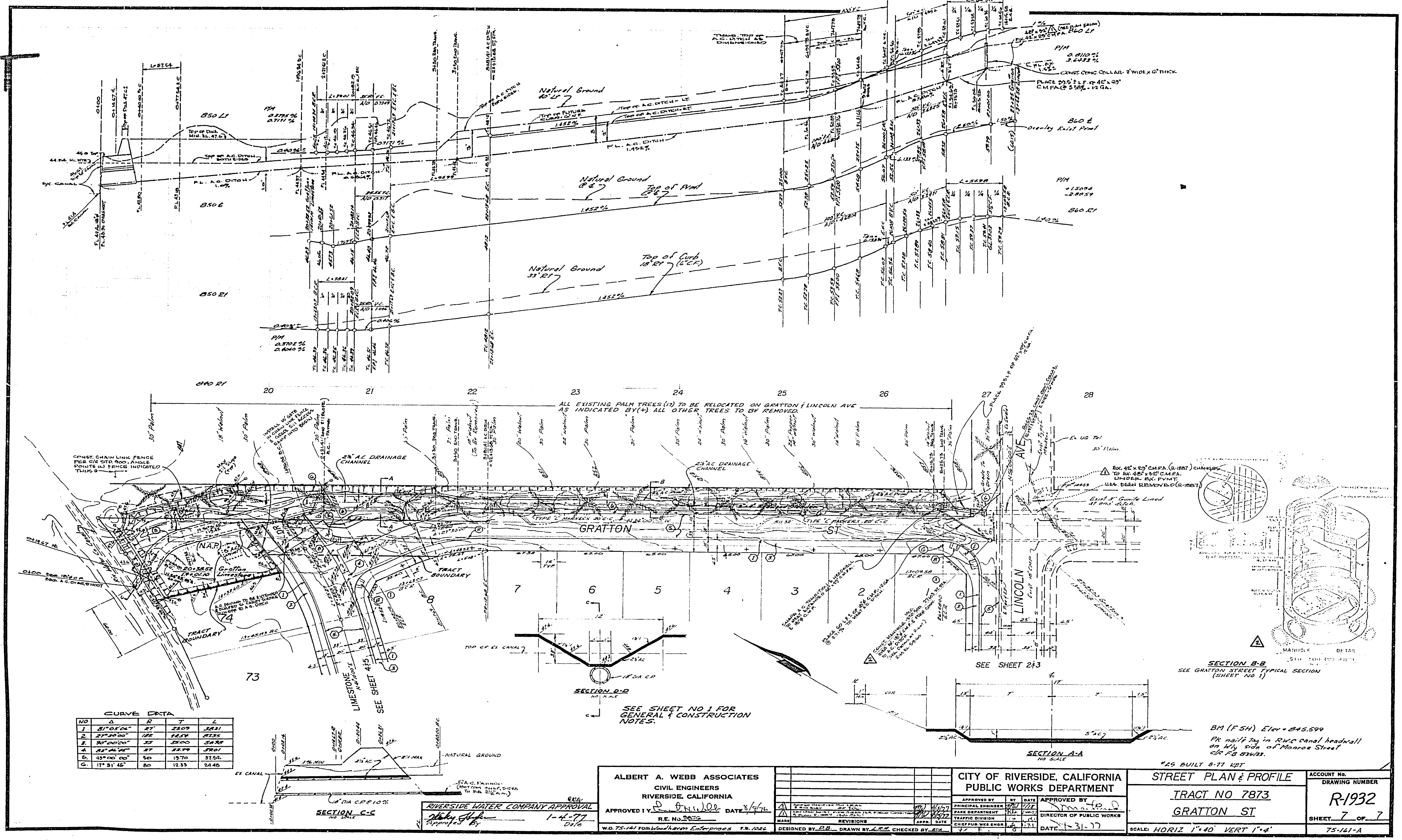
**CURVE DATA**

NO	Δ	R	T	L
1	14°08'00"	450	54.07	102.20
2	14°08'00"	380	45.70	82.73
3	24°33'40"	27	28.24	44.54
4	14°53'00"	580	34.71	72.01
5	30°00'00"	35	33.90	54.98
6	14°53'00"	318	41.40	81.23
7	30°00'00"	27	27.0	42.41
8	30°00'00"	27	27.0	42.41
9	14°53'00"	182	23.28	42.12
10	20°23'21"	115	20.48	40.82
11	24°33'40"	40	24.33	15.18
12	14°53'00"	218	28.58	54.44

SEE SHEET NO 1 FOR GENERAL & CONSTRUCTION NOTES.

BM (FSH) Elev = 845.099  
 PK nail tag in RWC canal headwall on Wly side of Monroe Street @ 17.8 859133.

<b>ALBERT A. WEBB ASSOCIATES</b> CIVIL ENGINEERS RIVERSIDE, CALIFORNIA APPROVED BY: <i>[Signature]</i> DATE: 8/9/76 R.E. NO. 0472 W.D. 75-161 FORWOOD/HANON Enterprises P.B. 1026	DESIGNED BY: <i>[Signature]</i> DRAWN BY: <i>[Signature]</i> CHECKED BY: <i>[Signature]</i>	<b>CITY OF RIVERSIDE, CALIFORNIA</b> <b>PUBLIC WORKS DEPARTMENT</b>		ACCOUNT NO. DRAWING NUMBER <b>R-1932</b>
		APPROVED BY: <i>[Signature]</i> DATE: 1-3-77 CHIEF PUBLIC WORKS ENGINEER	APPROVED BY: <i>[Signature]</i> DIRECTOR OF PUBLIC WORKS	<b>STREET PLAN &amp; PROFILE</b> <b>TRACT NO 7873</b> <b>JAMESTOWN DR.</b> <b>HARRISBURG PL.</b> SCALE: HORIZ 1"=40' VERT 1"=4' SHEET 6 OF 7 75-161-A



**CURVE DATA**

NO	B	R	T	L
1	87°05'41"	27'	2809	3611
2	27°30'00"	106'	1419	2135
3	30°00'00"	33'	3500	5489
4	32°46'46"	27'	2379	3701
5	43°00'00"	50'	1970	3152
6	17°31'45"	80'	1233	2445

ALBERT A. WEBB ASSOCIATES  
 CIVIL ENGINEERS  
 RIVERSIDE, CALIFORNIA

APPROVED BY: *[Signature]* DATE: 8/7/76  
 R.E. NO. 5235

DESIGNED BY: *[Signature]* DRAWN BY: *[Signature]* CHECKED BY: *[Signature]*

CITY OF RIVERSIDE, CALIFORNIA  
 PUBLIC WORKS DEPARTMENT

APPROVED BY: *[Signature]* DATE: 8/7/76  
 PRINCIPAL ENGINEER

APPROVED BY: *[Signature]* DATE: 8/7/76  
 DIRECTOR OF PUBLIC WORKS

STREET PLAN & PROFILE  
 TRACT NO 7873  
 GRATTON ST

SCALE: HORIZ 1"=40' VERT 1"=4'

ACCOUNT NO.  
 DRAWING NUMBER  
 R-1932  
 SHEET 7 OF 7  
 75-161-A

RIVERSIDE WATER COMPANY APPROVAL  
*[Signature]*  
 1-4-77

SECTION B-B  
 SEE GRATTON STREET TYPICAL SECTION  
 (SHEET NO 1)

BM (FSH) Elev = 845.599  
 PK nail tag in RWC canal headwall  
 on W side of Monroe Street  
 @ 18 834/83.

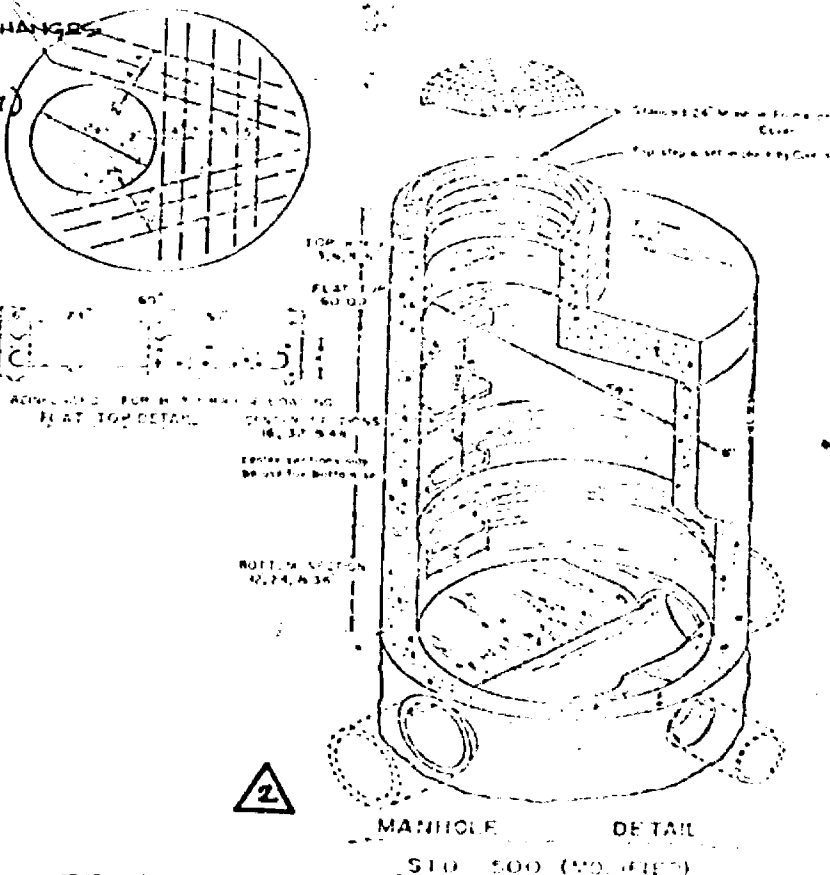
SECTION D-D  
 NO SCALE  
 SEE SHEET NO 1 FOR  
 GENERAL & CONSTRUCTION  
 NOTES.

SECTION A-A  
 NO SCALE

SECTION C-C  
 NO SCALE

SECTION D-D  
 NO SCALE

73



ALL EXISTING PALM TREES (?) TO BE RELOCATED ON GRATTON & LINCOLN AVE  
 AS INDICATED BY (+) ALL OTHER TREES TO BE REMOVED.

CONST. CHAIN LINK FENCE  
 PER CIV STD 900. ANGLE  
 POINTS IN FENCE INDICATED  
 THIS 9

24" AC DRAINAGE CHANNEL

24" AC DRAINAGE CHANNEL

EX. 42" X 25" CMPA (R-887) CHANGES  
 TO EX. 48" X 25" CMPA  
 UNDER EX. PVMT.  
 HAS BEEN REMOVED (R-1087)

EXIST. 8" GUMBLE LINED  
 41' EAST DITCH

SECTION B-B  
 SEE GRATTON STREET TYPICAL SECTION  
 (SHEET NO 1)

BM (FSH) Elev = 845.599  
 PK nail tag in RWC canal headwall  
 on W side of Monroe Street  
 @ 18 834/83.

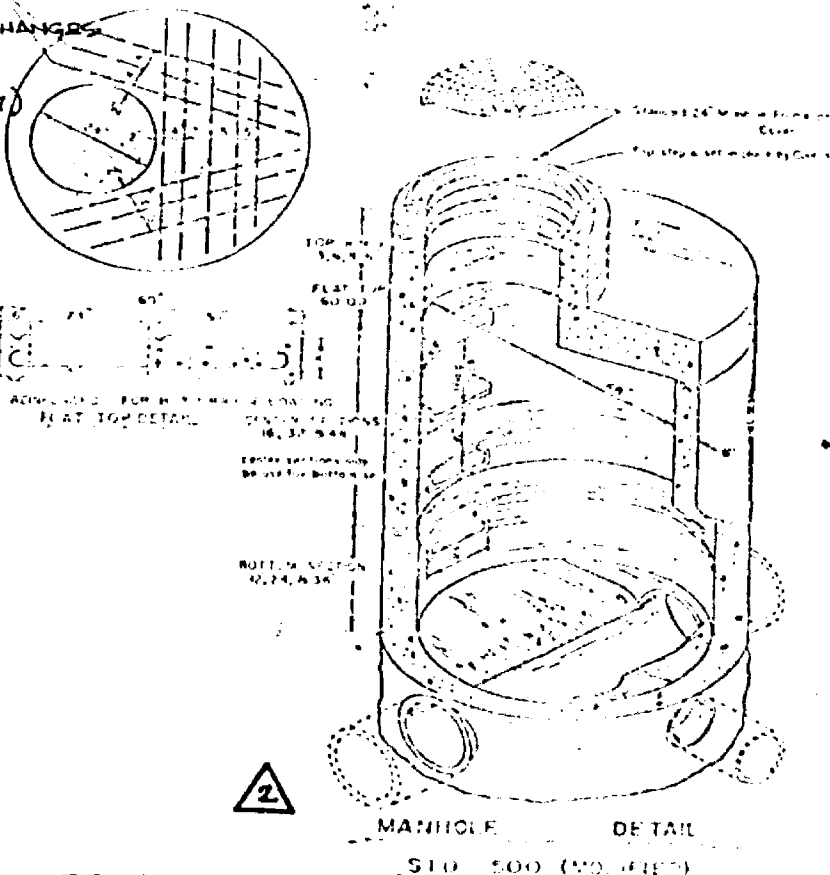
SECTION D-D  
 NO SCALE  
 SEE SHEET NO 1 FOR  
 GENERAL & CONSTRUCTION  
 NOTES.

SECTION A-A  
 NO SCALE

SECTION C-C  
 NO SCALE

SECTION D-D  
 NO SCALE

73



ALL EXISTING PALM TREES (?) TO BE RELOCATED ON GRATTON & LINCOLN AVE  
 AS INDICATED BY (+) ALL OTHER TREES TO BE REMOVED.

CONST. CHAIN LINK FENCE  
 PER CIV STD 900. ANGLE  
 POINTS IN FENCE INDICATED  
 THIS 9

24" AC DRAINAGE CHANNEL

24" AC DRAINAGE CHANNEL

EX. 42" X 25" CMPA (R-887) CHANGES  
 TO EX. 48" X 25" CMPA  
 UNDER EX. PVMT.  
 HAS BEEN REMOVED (R-1087)

EXIST. 8" GUMBLE LINED  
 41' EAST DITCH

SECTION B-B  
 SEE GRATTON STREET TYPICAL SECTION  
 (SHEET NO 1)

BM (FSH) Elev = 845.599  
 PK nail tag in RWC canal headwall  
 on W side of Monroe Street  
 @ 18 834/83.

SECTION D-D  
 NO SCALE  
 SEE SHEET NO 1 FOR  
 GENERAL & CONSTRUCTION  
 NOTES.

SECTION A-A  
 NO SCALE

SECTION C-C  
 NO SCALE

SECTION D-D  
 NO SCALE

73