

BENCH MARK EL. 1001.92
 R.R. Spike in North side Blaine Ave No. 737208-11 on South side Blaine Street
 on Center Line Rustin Avenue (Produced 7/11/58/59).

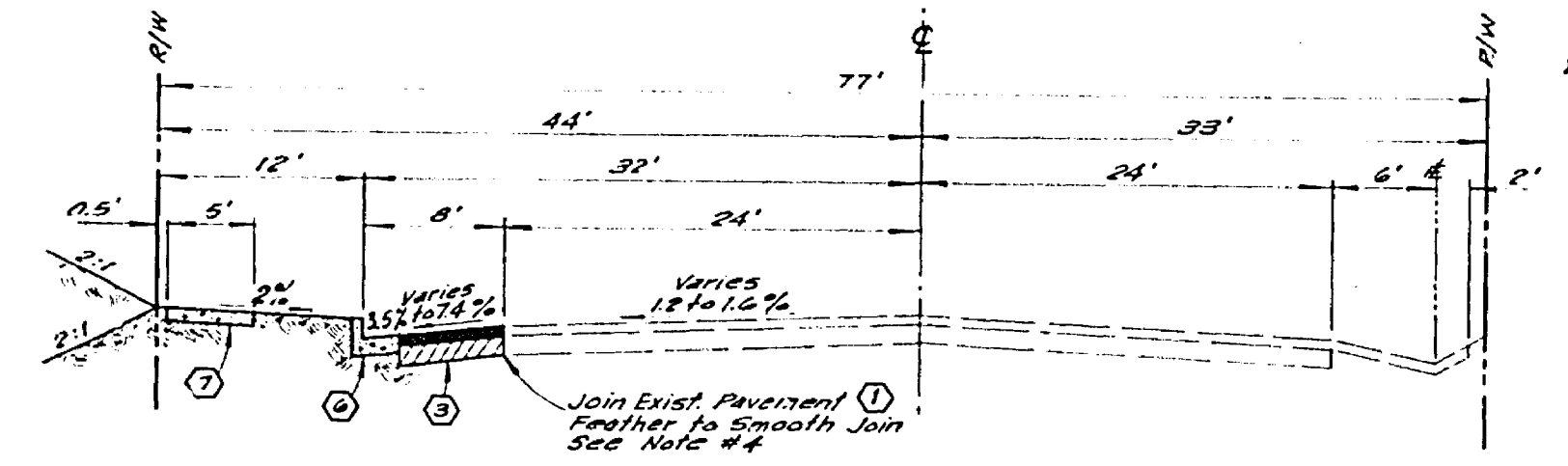
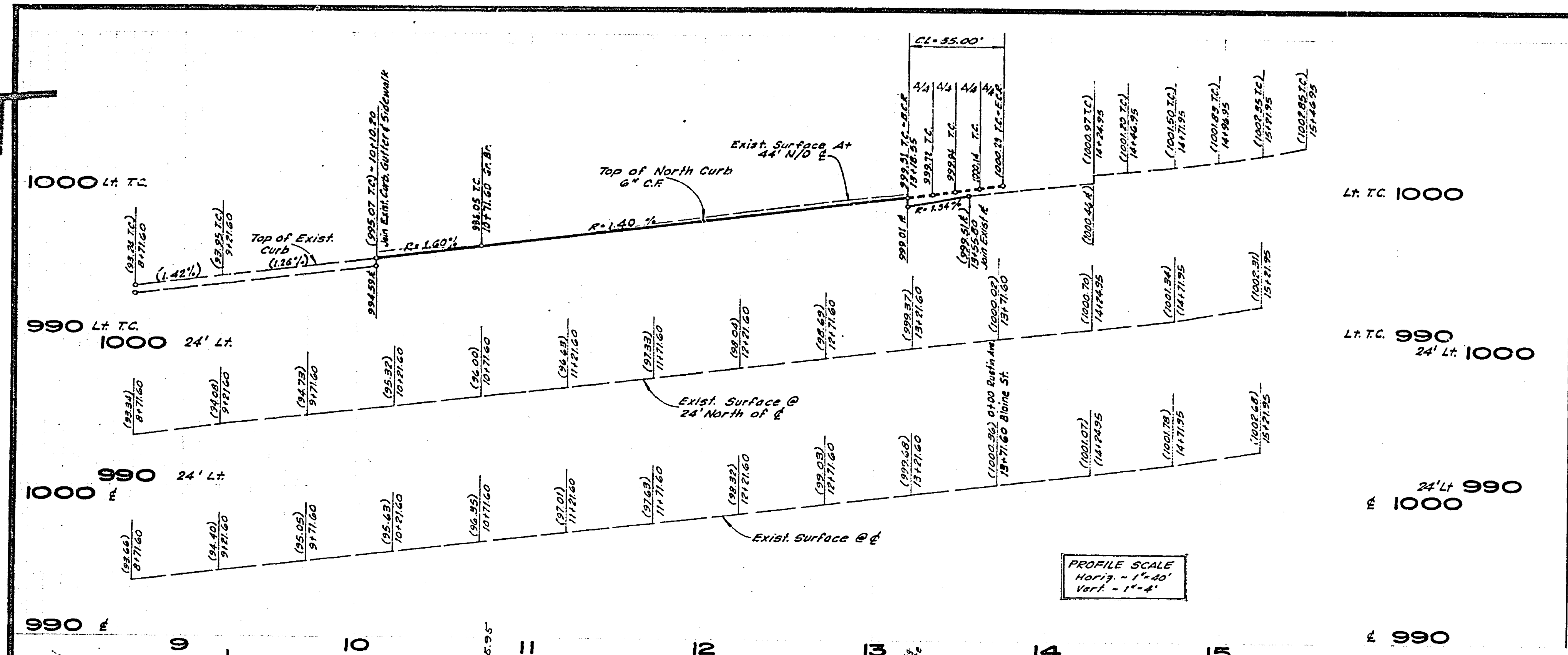
- CONSTRUCTION NOTES**
1. Sawcut exist pavement
 2. Const. 6" A.C. over compacted Native Soil
 3. Remove exist pavement and const. 4" A.C. over 10" D.G. base
 4. Const. P.C.C. Spandrel & Join exist Cross Gutter per STD Dwg. No. 220.
 5. Const. Wheel Chair Ramps per STD Dwg. No. 303.
 6. Const. Curb & Gutter, Type I, 6" CF per STD Dwg. No. 200.
 7. Const. P.C.C. Sidewalk per STD Dwg. No. 325.
 8. Const. P.C.C. Driveway Approach, Type II, per STD Dwg. No. 307, A129', B142'.
 9. Const. Variable Thickness A.C. Overlay.

- GENERAL NOTES**
1. All work done shall be in accordance with "Standard Specifications for Public Works Construction", 1976 Edition, and City of Riverside Standard Drawings.
 2. The contractor shall be responsible for protecting all utility lines and existing existing improvements and shall repair or replace in kind at his own expense any lines or improvements damaged by his operations during construction.
 3. It shall be the responsibility of the contractor to clear the Right of Way in accordance with the provisions of law as it affects each utility including irrigation lines and appurtenances and at no cost to the City.
 4. Trim edge of exist pavement where new pavement joins to a smooth, straight line. Construct match-up paving as shown on plan and overlay paving as directed in the field to produce a smooth section by estimates overlay to be 3.4 tons.
 5. Curb & gutter shall be staked with 3' offsets at 20' intervals. (See Note 10)
 6. Quantities shown are for information only and the City of Riverside is not responsible for their accuracy.
 7. Contractor is to verify existing sewer elevation prior to construction.
 8. Flagged elevations shall be staked in the field by the private engineer.

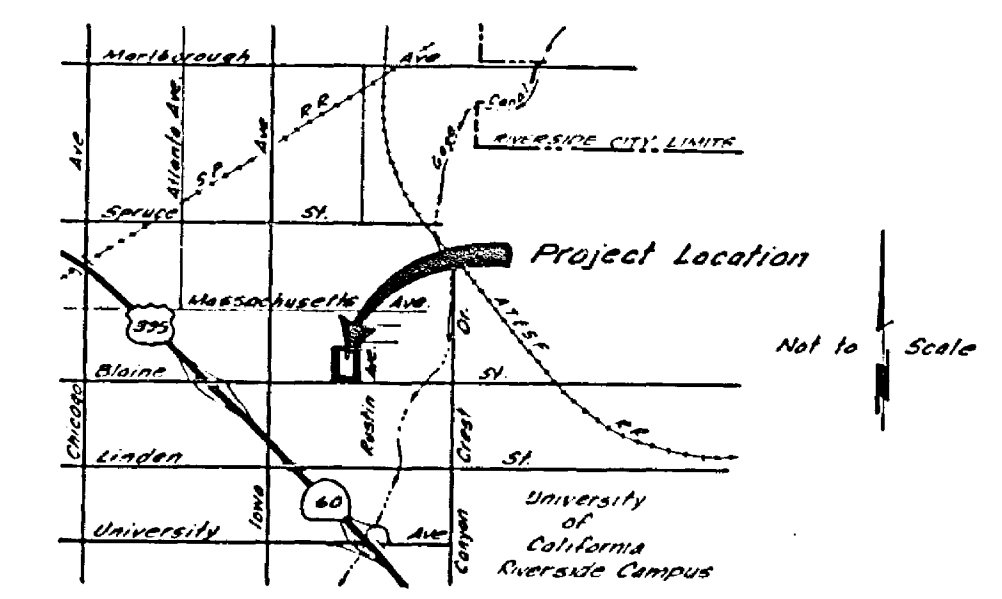
QUANTITY ESTIMATE

ITEM	DESCRIPTION	QUANTITY
1	6" Asphaltic Concrete	2749 S.F.
2	4" Asphaltic Concrete	2763 S.F.
3	10" D.G. Base	2614 S.F.
4	P.C.C. Spandrel	407 S.F.
5	P.C.C. Curb & Gutter	1018 L.F.
6	P.C.C. Driveway Approach	333 S.F.
7	A.C. Berm Removal	1031 L.F.
8	Asphaltic Concrete Removal	2614 S.F.
9	P.C.C. Sidewalk	4849 S.F.
10	8" U.C.P. Sewer	40 L.F.
11	Sewer Manhole	1 EA.
12	6" Asphaltic Concrete Berm	15 L.F.
13	Variable Thickness A.C. Overlay	328 S.F.

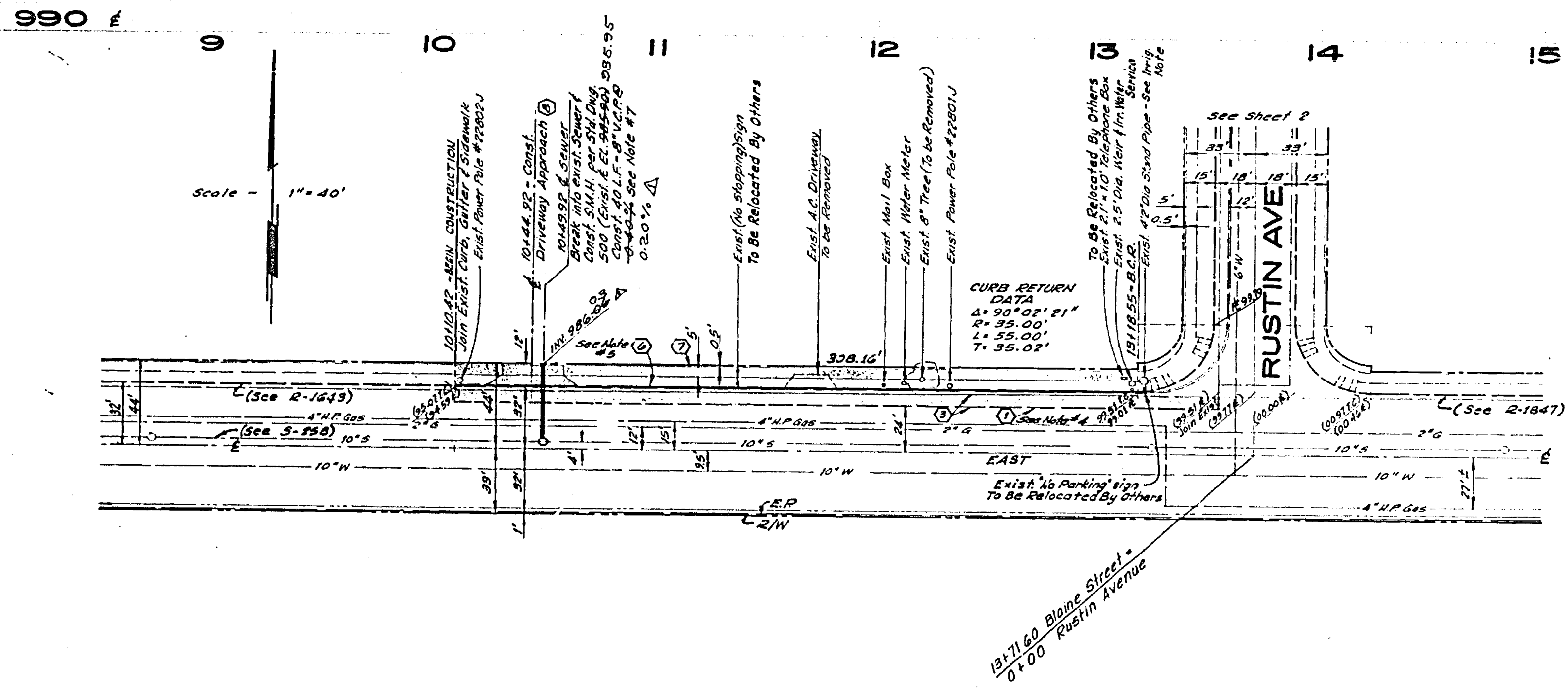
9. A plug shall be installed and will remain in place where the new sewer connects with the existing sewer until the new sewer is accepted by the city.
10. Curb & gutter shall be staked with 3' offsets at 20' intervals & two rows of number 3 rebar shall be placed in gutter where grade is less than 0.40%. Place 1/2" steel dowel pins at all expansion joints.



**TYPICAL SECTION
 BLAINE STREET**
 No Scale
 T.I. = 7



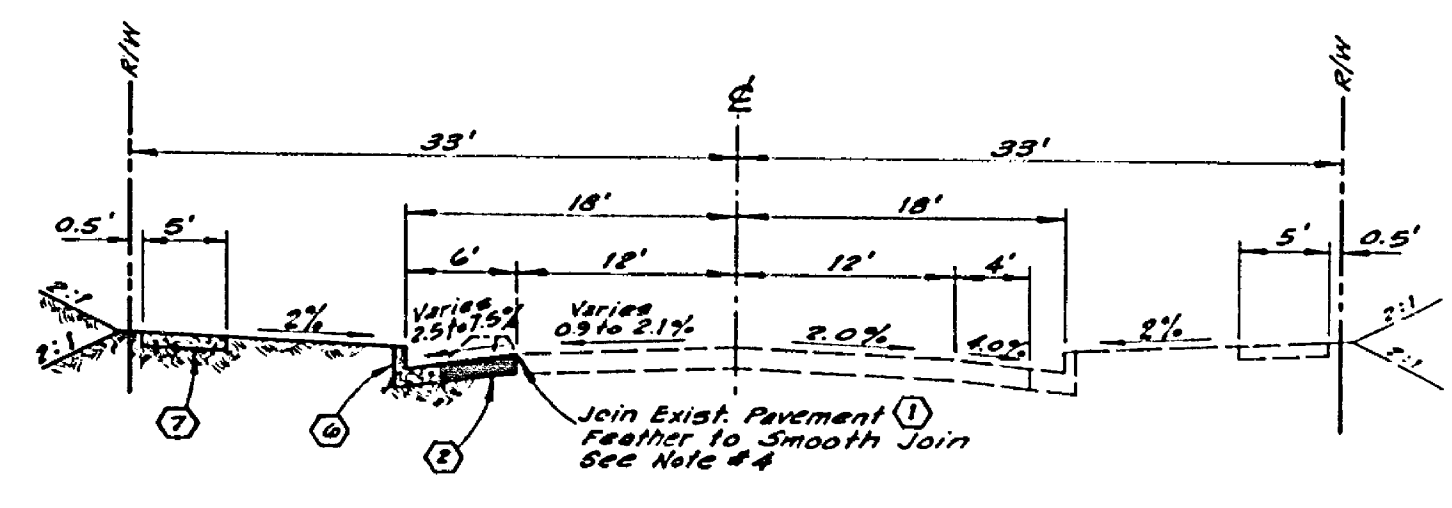
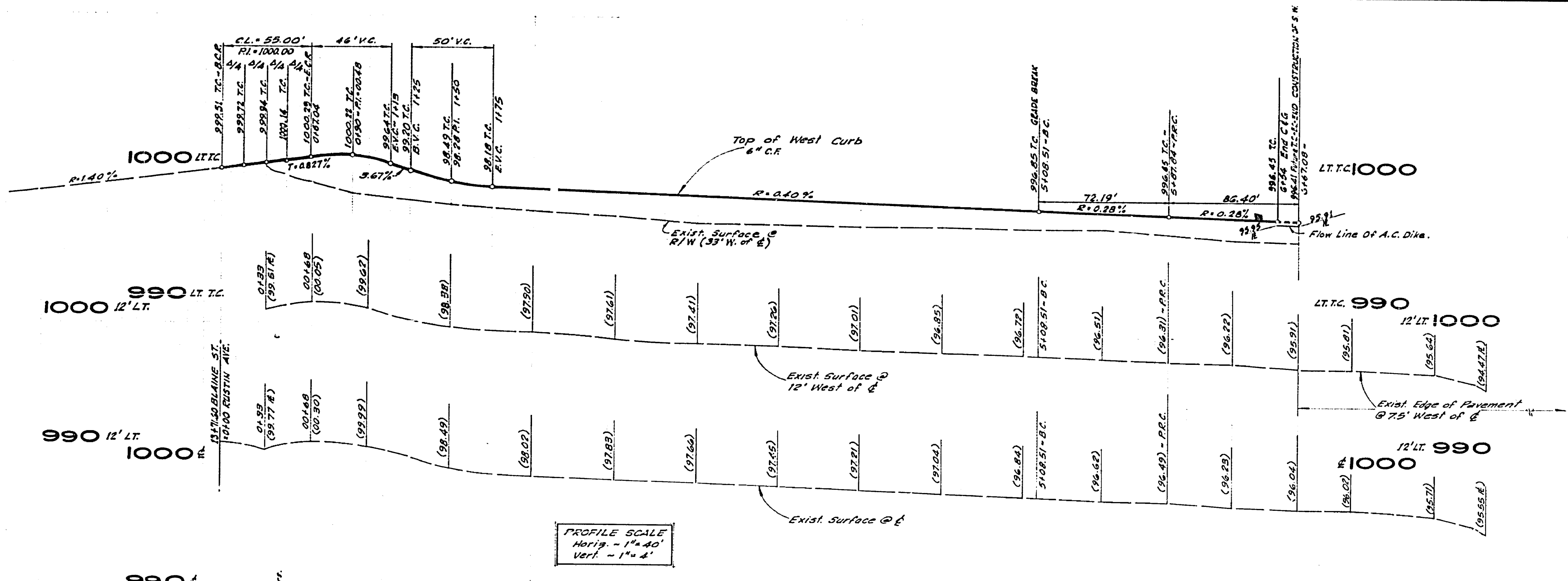
VICINITY MAP
 #42 BUILT 12-77 KPT
 INDEVED R.R.
 PROJECT NO.



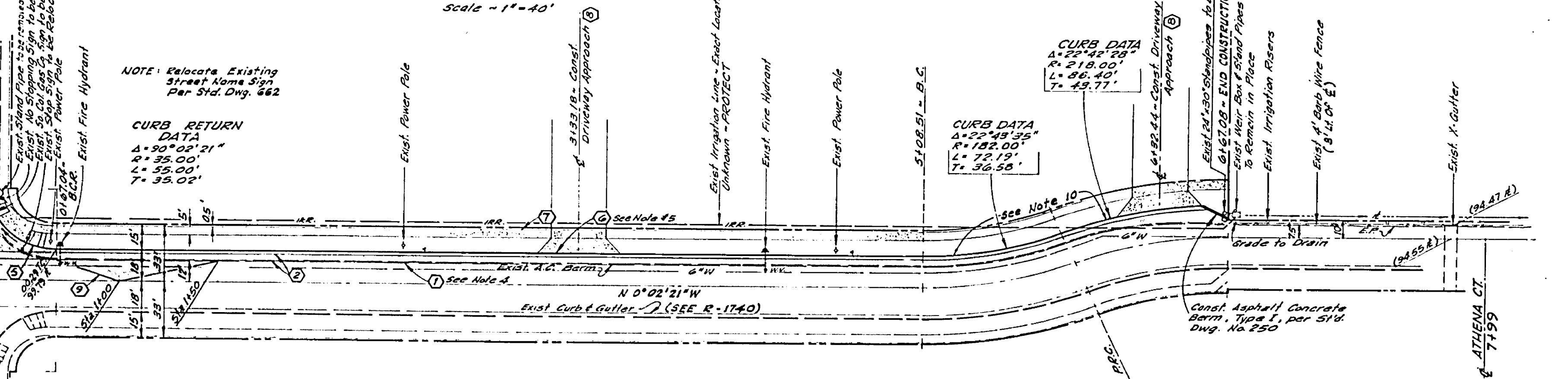
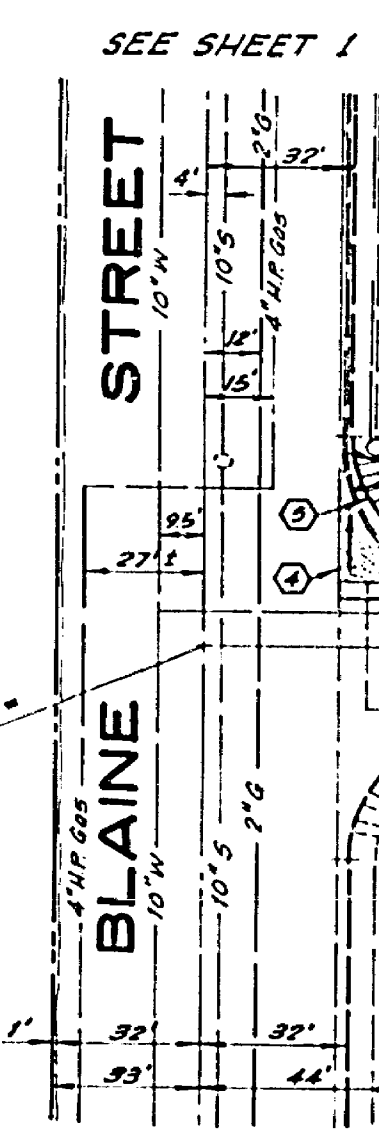
NOTES CONCERNING IRRIGATION LINES

1. The existing 2.5' diam. weir & irrigation service & the 4.2' diam. standpipe at the corner of Rustin Ave. & Blaine St. are to be removed & relocated by others.
2. An irrigation line exists 33' N/O the E of Blaine St. The exact location of this line is unknown. The irrigation line is to be abandoned. It is the responsibility of the street improvement contractor to contact the engineer, water division of the public utilities department for the disposition of this irrigation line.
3. The street improvement contractor shall contact the Gage Canal Company 48 hours prior to commencement of work. Telephone: (714) 683-8228.

THE GAGE CANAL COMPANY APPROVED BY: <i>C. O. Lane</i> 1/13/77 DATE	PREPARED BY: L.D. KING ENGINEERING CO., INC. 187 W. ORANGETHORPE AVE., SUITE "E" PLACENTIA, CALIF. (714) 993-6060 APPROVED BY: <i>Ernest J. King</i> R.C.E. 23056 DATE: 22 Dec 76	CITY OF RIVERSIDE, CALIFORNIA DEPARTMENT OF PUBLIC WORKS APPROVED BY: <i>[Signature]</i> PRINCIPAL ENGINEER TRAFFIC DIVISION CHIEF P. W. ENGR. <i>[Signature]</i> DATE: 1-14-77	PLAN AND PROFILE BLAINE STREET RUSTIN AVE. TO 36118' WESTERY R-8-767 & PPD-1-767 HORIZ. SCALE: 1" = 40' VERT. SCALE: 1" = 4' SHEET 1 OF 2 FILE NO.
--	---	---	---



**TYPICAL SECTION
RUSTIN AVENUE**
NO SCALE
T.I. = 5



BENCH MARK EL. 1001.92
R.R. Spike in North Side Power Pole No. 737203-H
on South side Blaine Street on Central Line Rustin
Avenue Produced (F.B. 949/38)

NOTES CONCERNING IRRIGATION LINES
1. The exact location of the irrigation line in Rustin Ave. is unknown. The irrigation line is to be abandoned. It is the responsibility of the street improvement contractor to contact the engineer, water division of the public utilities department for the disposition of this irrigation line.
2. The street improvement contractor shall contact the Sage Canal company 48 hours prior to commencement of work. Telephone: (714) 683-8728.

THE GAGE CANAL COMPANY APPROVED BY: <i>[Signature]</i> DATE: 11/3/77	PREPARED BY: L.D. KING ENGINEERING CO., INC. 187 W. ORANGETHORPE AVE., SUITE "E" PLACENTIA, CALIF. (714) 993-6060 R.C.E. 23056 DATE: 24 Dec 76	CITY OF RIVERSIDE, CALIFORNIA DEPARTMENT OF PUBLIC WORKS APPROVED BY: <i>[Signature]</i> DATE: 1-16-77 DIRECTOR OF PUBLIC WORKS	PLAN AND PROFILE RUSTIN AVENUE FROM BLAINE STREET TO 660 NORTHERLY E-B-767 & PED-1-767 HORIZ. SCALE: 1" = 40' VERT. SCALE: 1" = 4'	PROJECT NO. R-1936 SHEET 2 OF 2 FILE NO.
---	--	--	---	--