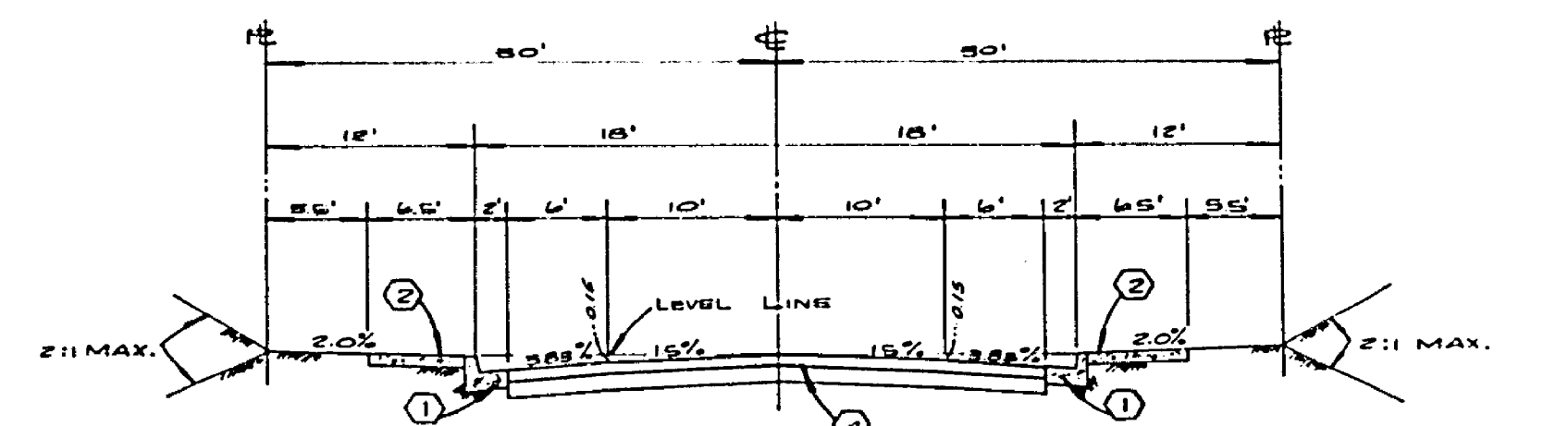


TYPICAL SECTION
ST. AUGUSTINE DRIVE (East-West)
R.I. = 5



TYPICAL SECTION
ST. AUGUSTINE DRIVE (North-South)
R.I. = 5

- GENERAL NOTES:**
- CONSTRUCTION SHALL BE IN ACCORDANCE WITH THE STANDARD SPECIFICATIONS FOR PUBLIC WORKS CONSTRUCTION, 1974 EDITION, AND PER CITY OF RIVERSIDE STANDARD DRAWINGS.
 - ALL FLAGGED ELEVATIONS SHALL BE STAKED IN THE FIELD BY THE ENGINEER.
 - DIVEMWAY APPROACHES SHALL BE LOCATED IN THE FIELD BY THE ENGINEER. CONSTRUCTION PER CITY OF RIVERSIDE STANDARD NO. 802 (A, F, G, H, I, J, K, L, M, N, O, P, Q, R, S, T, U, V, W, X, Y, Z).
 - CURBS WILL BE STAKED AT 25' INTERVALS AND 8' OFFSETS WHERE GRADES ARE 0.4% OR GREATER.
 - TRAFFIC CONTROL SIGNS MUST BE IN PLACE PRIOR TO OPENING STREETS TO TRAFFIC.
 - IT SHALL BE THE RESPONSIBILITY OF THE CONTRACTOR TO CLEAR THE RIGHT OF WAY IN ACCORDANCE WITH THE PROVISIONS OF LAW AS IT AFFECTS EACH UTILITY INCLUDING IRRIGATION LINES AND APPEARANCES AND AT NO COST TO THE CITY.
 - SEE "STREET LIGHTING PLANS" FOR NUMBER AND LOCATION OF REQUIRED STREET LIGHTS.
 - TRIM EDGES OF EXISTING PAVEMENT WHERE NEW PAVEMENT JOINS TO A SMOOTH STRAIGHT LINE. CONSTRUCT MATCH UP PAVING AS SHOWN ON PLANS AND OVERLAY PAVING AS DIRECTED IN THE FIELD TO PRODUCE A SMOOTH SECTION.
 - 4"x4" BLOCKOUT FOR MAIL BOXES REQUIRED IN CURB LINE SIDEWALKS.
 - THE CONTRACTOR SHALL CONTACT THE PUBLIC SERVICES DEPT. (787-7281) TO PICK UP ANY EXISTING STD 180 BARRICADES THAT ARE BEING REMOVED. THE CITY INSPECTOR WILL MAKE THE FINAL DETERMINATION ON WHETHER AN EXISTING BARRICADE MAY BE RELOCATED.
 - "The private engineer signing these plans is responsible for assuring the accuracy and acceptability of the work hereon. In the event of discrepancies arising during construction as a result of errors or omissions, the private engineer shall be responsible for determining an acceptable solution and revising the plans for approval by the City."

STREET NAME SIGN SCHEDULE	
(A)	ST. AUGUSTINE DR. 6000
(B)	ST. AUGUSTINE DR. 6000
(B)	W 53 (NOT A THROUGH ST.) 24" X 24"

- CONSTRUCTION NOTES:**
- CONSTRUCT PCC CURB AND GUTTER PER RIVERSIDE CITY STD. NO. 200 (L, C, R). UNLESS OTHERWISE NOTED.
 - CONSTRUCT 6" PCC CURB SIDEWALK PER RIVERSIDE CITY STD. NO. 325.
 - CONSTRUCT PCC CROSS GUTTER PER RIVERSIDE CITY STD. NO. 220. 10' WIDE.
 - CONSTRUCT 2 1/2" AC PAVEMENT OVER "DG BASE OR "AC PAVEMENT OVER COMPACTED NATIVE.
 - REMOVE BARRICADE SEE NOTE 10.
 - CONSTRUCT WHEELCHAIR RAMP PER RIVERSIDE CITY STD. NO. 304.
 - Proposed location for exist. barricade, see note 10.

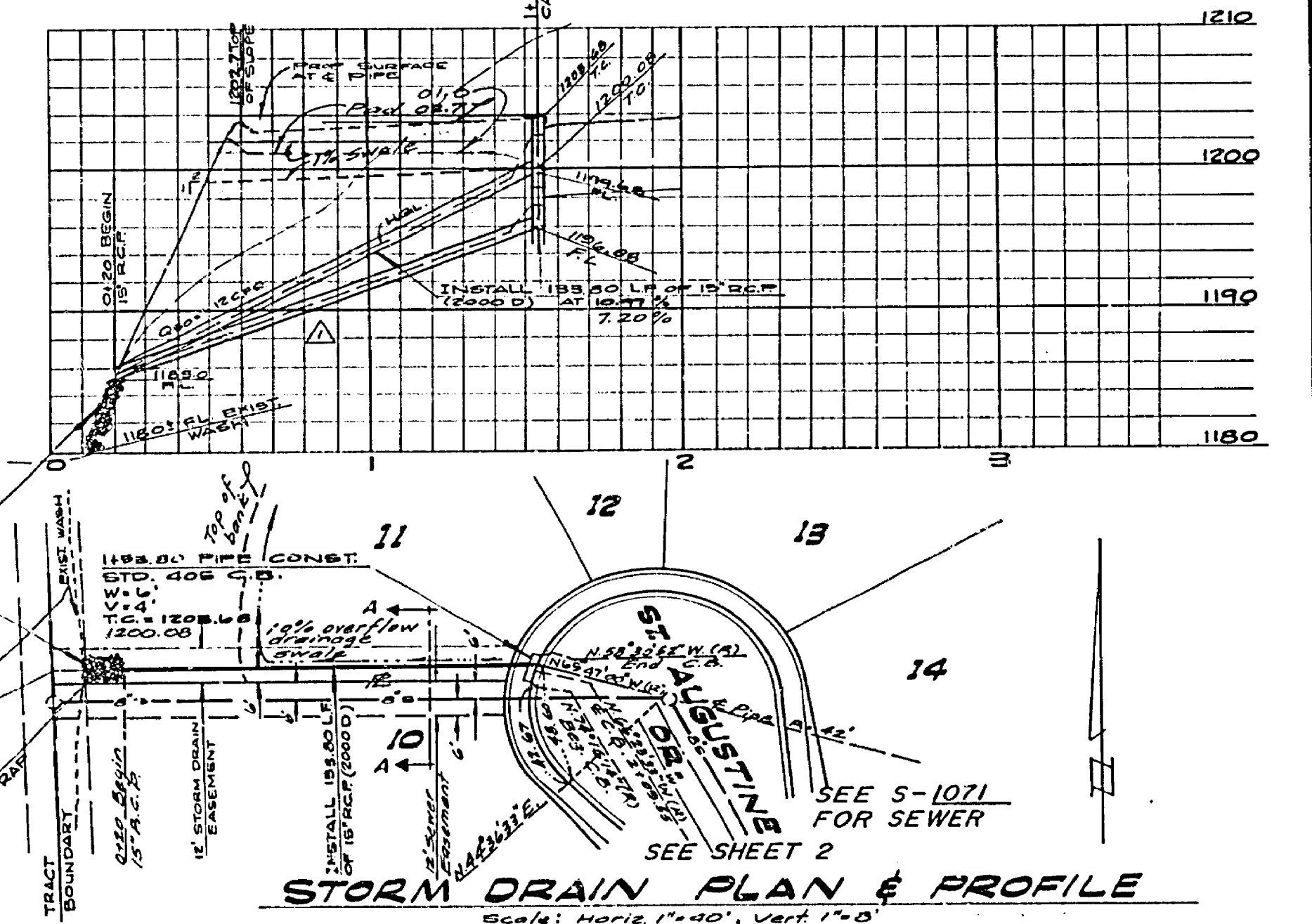
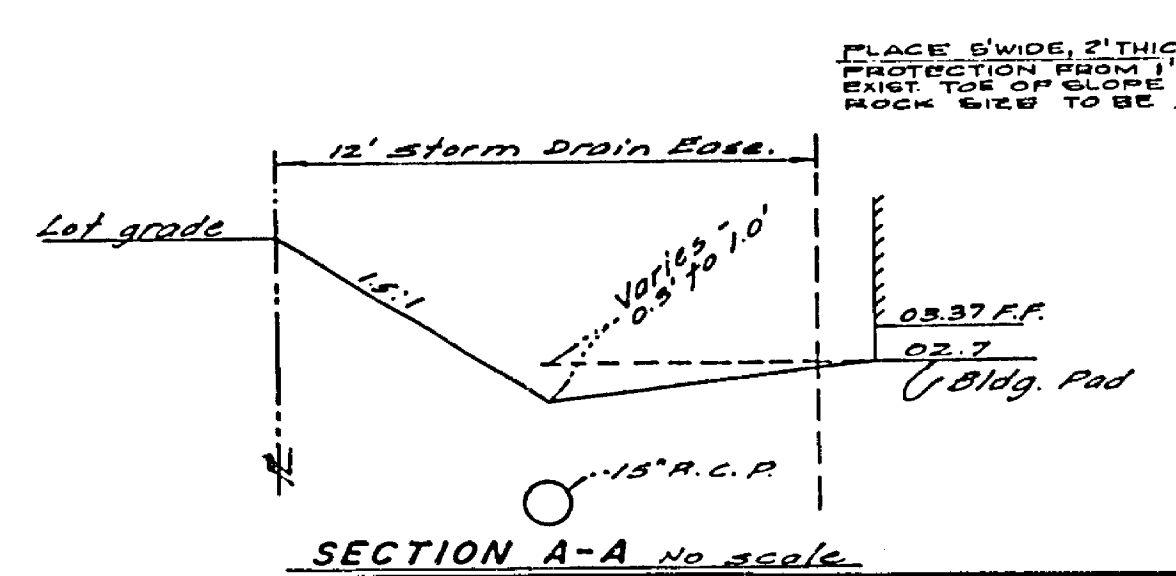
NOTICE TO CONTRACTOR:

THE EXISTENCE AND LOCATION OF ANY UNDERGROUND UTILITY PIPES OR STRUCTURES SHOWN ON THESE PLANS ARE OBTAINED BY A SEARCH OF THE AVAILABLE RECORDS. TO THE BEST OF OUR KNOWLEDGE, THERE ARE NO EXISTING UTILITIES EXCEPT AS SHOWN ON THESE PLANS.

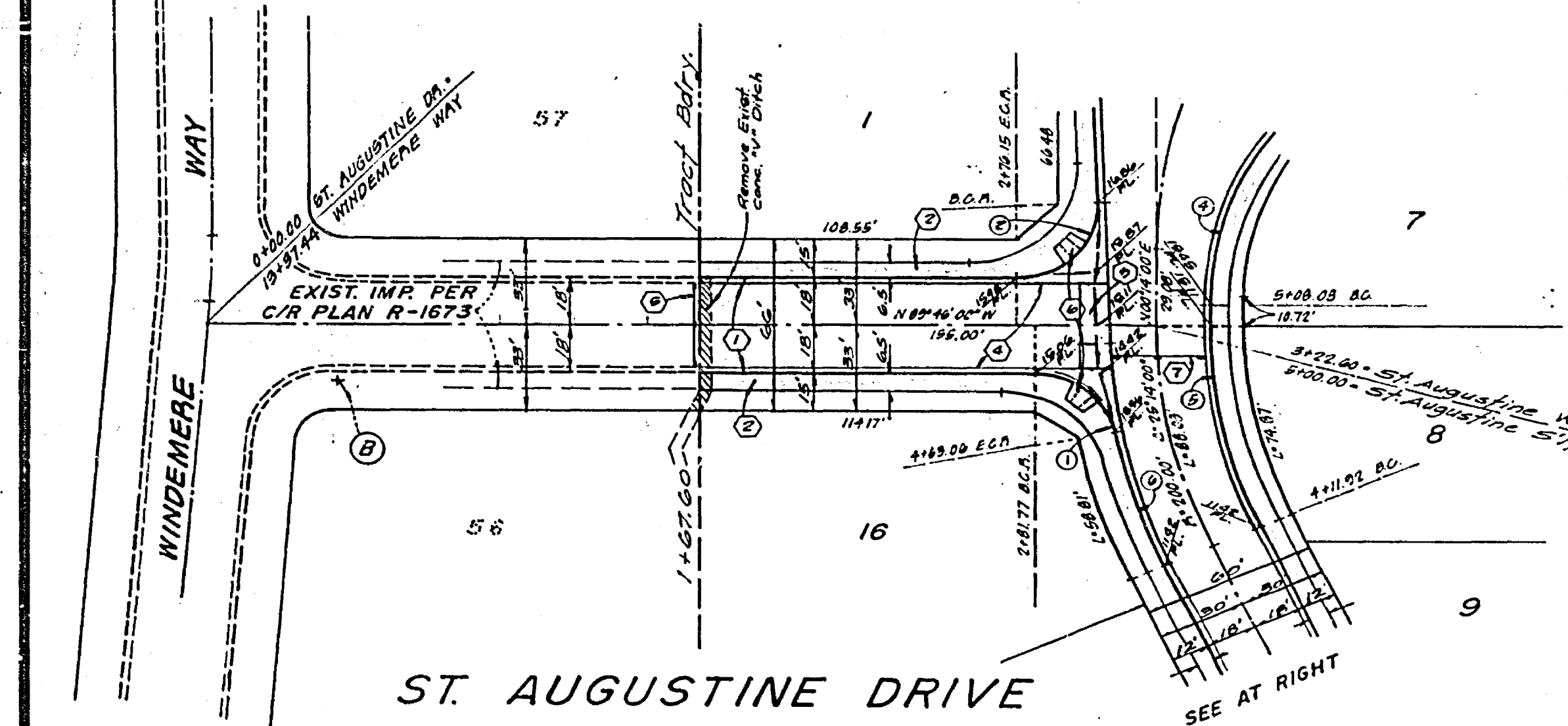
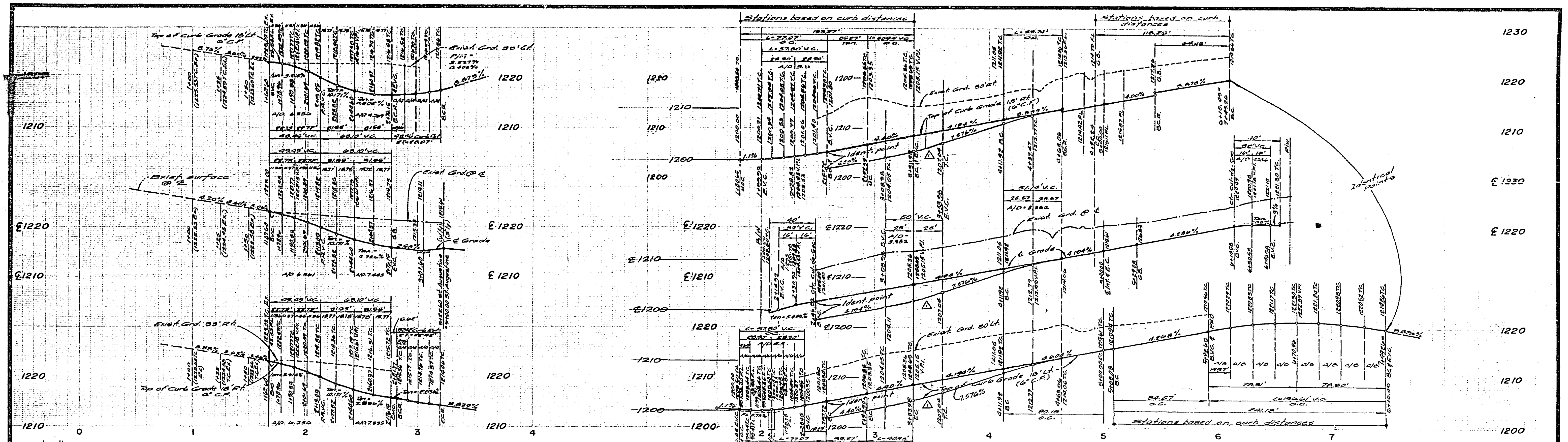
THE CONTRACTOR IS REQUIRED TO TAKE DUE PRECAUTIONARY MEASURES TO PROTECT THE UTILITY LINES SHOWN AND ANY OTHER LINES NOT OF RECORD OR NOT SHOWN ON THESE PLANS.

BENCH MARK: (T.B.M. This Project Only)

TOP OF CURB RETURN AT WEST END OF NW CURB RETURN, WINDEMERE WAY AND ST. AUGUSTINE DR. PER CITY PLAN R-1675 SHEET 8, YELLOW PAINTED CIRCLE. T.B.M. ELEVATION 127.45

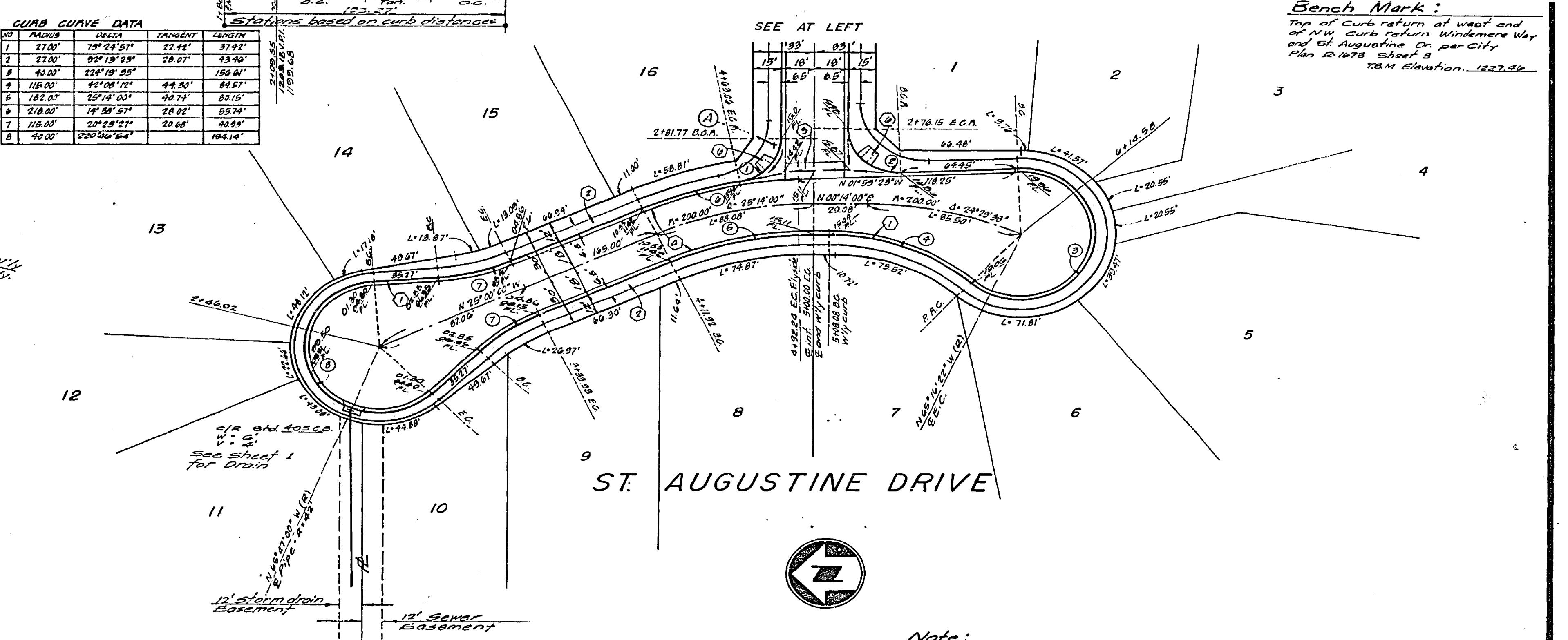


ALBERT A. WEBB ASSOCIATES CIVIL ENGINEERS RIVERSIDE, CALIFORNIA APPROVED BY: <i>[Signature]</i> DATE: 11/9/76 R.E. No. 2876 W.O. 75-221 FOR	CITY OF RIVERSIDE, CALIFORNIA PUBLIC WORKS DEPARTMENT APPROVED BY: <i>[Signature]</i> DATE: 11/9/76 PARK DEPARTMENT TRAFFIC ENGINEER CHIEF PUBLIC WORKS ENGINEER DATE: 11/9/76	STREET PLAN & PROFILE INDEX TRACT NO 7218 SCALE AS SHOWN	ACCOUNT No. DRAWING NUMBER R-1947
			SHEET 1 OF 2 75-221-A



GUARD CURVE DATA

NO	PC	PVI	PT	LENGTH
1	21.00'	22' 13" 31"	22.42'	37.42'
2	22.00'	22' 13" 31"	22.07'	43.76'
3	23.00'	22' 13" 31"	22.07'	158.61'
4	115.00'	22' 13" 31"	44.30'	84.51'
5	182.00'	22' 13" 31"	40.74'	80.15'
6	218.00'	18' 38" 57"	28.02'	55.74'
7	115.00'	20' 28" 27"	22.65'	43.54'
8	40.00'	22' 13" 31"	22.65'	184.18'



Bench Mark:
Top of Curb return at west end of NW Curb return Windemere Way and St. Augustine Dr. per City Plan R-1678 Sheet 2
TBM Elevation 1227.96

Note:
For General of Construction Notes See Sheet #1

ALBERT A. WEBB ASSOCIATES CIVIL ENGINEERS RIVERSIDE, CALIFORNIA APPROVED BY: <i>[Signature]</i> DATE 11/19/76 R.E. No. 2876	CITY OF RIVERSIDE, CALIFORNIA PUBLIC WORKS DEPARTMENT APPROVED BY: <i>[Signature]</i> DATE 3/24/77 TRAFFIC DIVISION CHIEF PUBLIC WORKS ENGINEER	STREET PLAN & PROFILE ST. AUGUSTINE DRIVE TRACT NO. 7218	ACCOUNT NO. DRAWING NUMBER R-1947 SHEET 2 OF 2 75-221-A
		SCALE: HORIZ: 1"=40' VERT: 1"=8'	DATE: 3-24-77