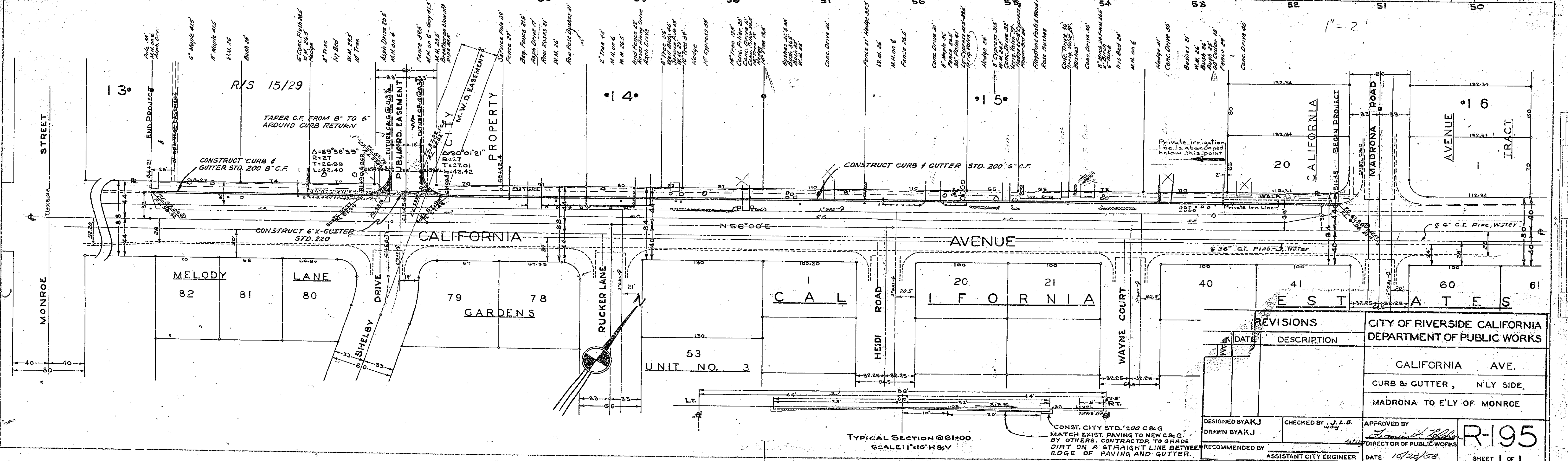


**CONSTRUCTION NOTES**

- Contractor to remove driveways to clear construction. The property owners will be responsible for the reconstruction of driveways to meet curb grade.
- Contractor to remove trees, shrubs and fences to clear construction area. No trees to be replaced.
- Utilities to be relocated by Department or Utility Co. involved.

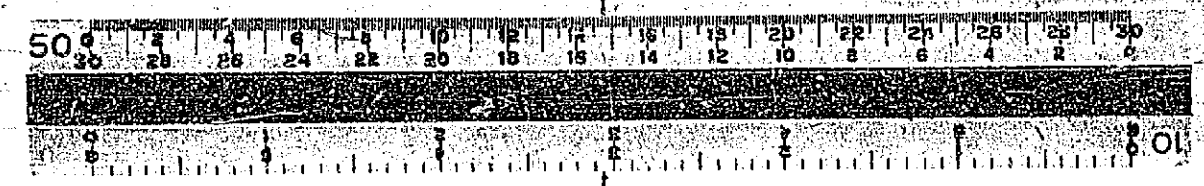
CITY B.M. - P.K. IN NLY H'D WALL OF STORM DRAIN N.E. COR. CALIF & MONROE EL. 759.25  
 F.B. 518/9, 547/40, 032/14-31  
 SEE PLAN R-52  
 SCALE: 1"=50' H  
 1"=5' V

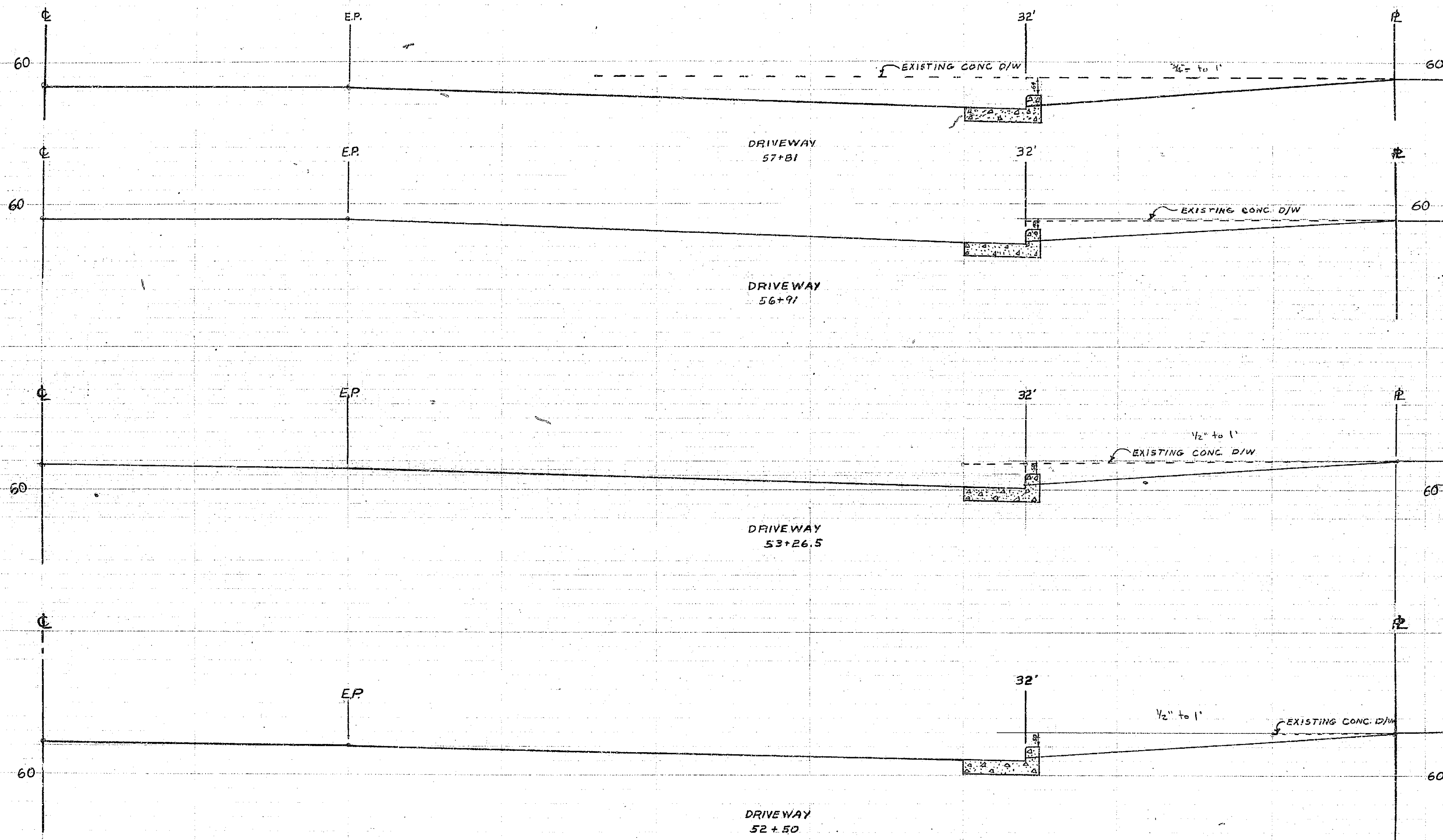


REVISIONS		CITY OF RIVERSIDE CALIFORNIA DEPARTMENT OF PUBLIC WORKS	
DATE	DESCRIPTION		
		CALIFORNIA AVE. CURB & GUTTER, NLY SIDE MADRONA TO ELY OF MONROE	
DESIGNED BY	CHECKED BY	APPROVED BY	<b>R-195</b>
DRAWN BY	DATE	DIRECTOR OF PUBLIC WORKS	
RECOMMENDED BY		ASSISTANT CITY ENGINEER	SHEET 1 OF 1

PROFILE  
 DATE  
 DRAWN BY  
 CHECKED BY  
 APPROVED BY

PLAN  
 DATE  
 DRAWN BY  
 CHECKED BY  
 APPROVED BY





Note: These D/W's will all work well.  
wds 3/12/59

REVISIONS			CITY OF RIVERSIDE CALIFORNIA DEPARTMENT OF PUBLIC WORKS	
MARK	DATE	DESCRIPTION		
			DRIVEWAY CROSS SECTIONS CALIFORNIA AVENUE MADRONA TO ELY OF MONROE	
DESIGNED BY	CHECKED BY	APPROVED BY	SEE PLAN	
DRAWN BY BLOW		DIRECTOR OF PUBLIC WORKS	R-195	
RECOMMENDED BY	ASSISTANT CITY ENGINEER	DATE	SHEET OF	