

- GENERAL NOTES**
- It shall be the responsibility of the contractor to clear the right of way in accordance with the provisions of law as if a field's easibility including irrigation lines and appurtenances and at no cost to the City.
 - Construction shall be in accordance with the City of Riverside Department of Public Works Standard Drawings and the Standard Specifications for Public Works Construction, 1974 Edition.
 - Construct Driveway approach per Std. Dwg. 302. Exact size and location to be determined at the time of construction as approved by the Traffic Engineer.
 - Curb and gutter shall be staked with 3' offsets at 25' intervals.
 - The Developer shall arrange for a soils test to be made by a Soils Engineer after Arlington Ave. has been prepared to rough grade. Depth of base material and A.C. paving shall be determined by the City of Riverside design standards and test procedures.
 - All flagged elevations shall be staked in the field by the private engineer.
 - All testing and certification of the treated base will be at the developer's cost.
 - Turn edge of existing pavement where new pavement joins to a smooth straight line. Construct match-up paving as shown on the plans and overlay paving as directed in the field to produce a smooth surface. Engineer estimates overlay to be 28 tons.

154+10.16 P.I. IS ON CONST. C.C.G. ON BOTH SIDES.

SEE SHEET 1 FOR GENERAL NOTES

INDEXED, E.T.

RUHNAU · EVANS · RUHNAU · ASSOCIATES
Architects Planners
4200 Orange Street, Riverside, California 92501
REV. 2-8-77

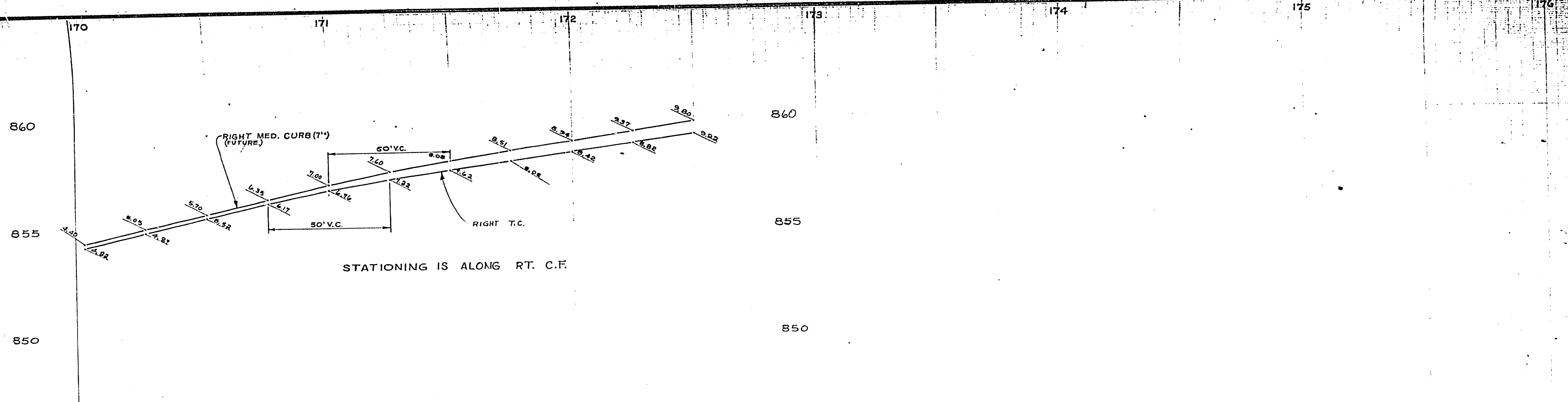
CURVE DATA				
INDEX	R	Δ	T	L
35	83°59'18"	34.99'	54.97'	
35	90°00'42"	35.01'	54.98'	

ALBERT A. WEBB ASSOCIATES
CIVIL ENGINEERS
RIVERSIDE, CALIFORNIA
APPROVED BY: *Earl N. Webb*
DATE: 1-31-77 R.C.E. NO. 9876
DESIGNED BY: DRAWN BY: CHECKED BY:

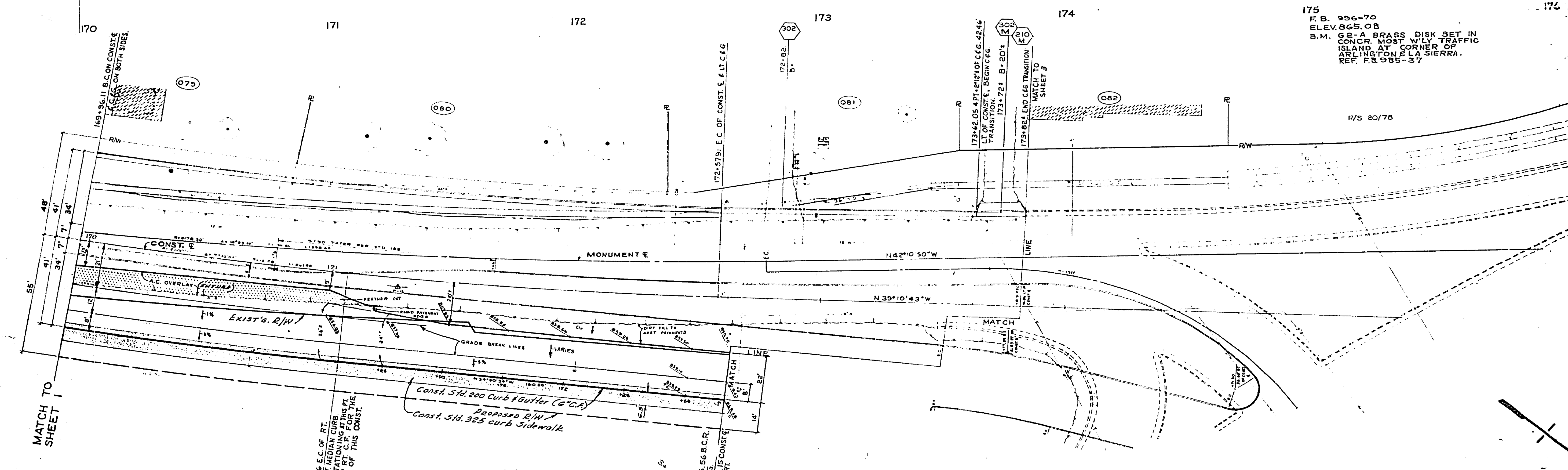
CITY OF RIVERSIDE
PUBLIC WORKS DEPARTMENT
APPROVED BY: *James B. ...*
PRINCIPAL ENGINEER: *...*
JANUARY DEPARTMENT: *...*
TRAFFIC DIVISION: *...*
CHIEF T.W. ENGINEER: *...*
DATE: 3-1-77

STREET PLAN & PROFILE
LA SIERRA AVENUE
CURB & GUTTER AND SIDEWALK ONLY
STA. 166+00 TO STA. 174+00
SCALE 1" = HORIZ. 1" = 20' VERT. 1" = 2'

R-1950
SHEET 1 OF 4
77-11-A



STATIONING IS ALONG RT. C.F.



175
 F.B. 996-70
 ELEV. 865.08
 B.M. 62-A BRASS DISK SET IN CONCR. MOST W/LY TRAFFIC ISLAND AT CORNER OF ARLINGTON & LA SIERRA. REF. F.B. 985-37

CAUTION
 PACIFIC TELEPHONE CABLES UNDERGROUND BEFORE EXCAVATION
 CALL ORANGE COUNTY 7:30 A.M. to 5 P.M. & Holidays
 Orange County 714-533-0811
 Riverside County 714-584-0071
 Inyo County 714-864-0001
 San Bernardino County 714-884-0027
 Los Angeles County 213-421-3111
 San Diego County 619-498-0099

171+06.56 E.C. OF RT. CURB
 175+66.56 B.C.R. (L.T.C.G.)
 172+57.91 E.C. OF CONST. 5' & L.T.C.G.
 172+82.00 B.C.R. (L.T.C.G.)
 173+72.00 B.C.R. (L.T.C.G.)
 173+82.00 E.C. OF CONST. 5' & L.T.C.G.

R/S 33/83

SEE SHEET 1 FOR GENERAL NOTES

RUHNAU · EVANS · RUHNAU · ASSOCIATES
 Architects Planners
 4200 Orange Street, Riverside, California 92501

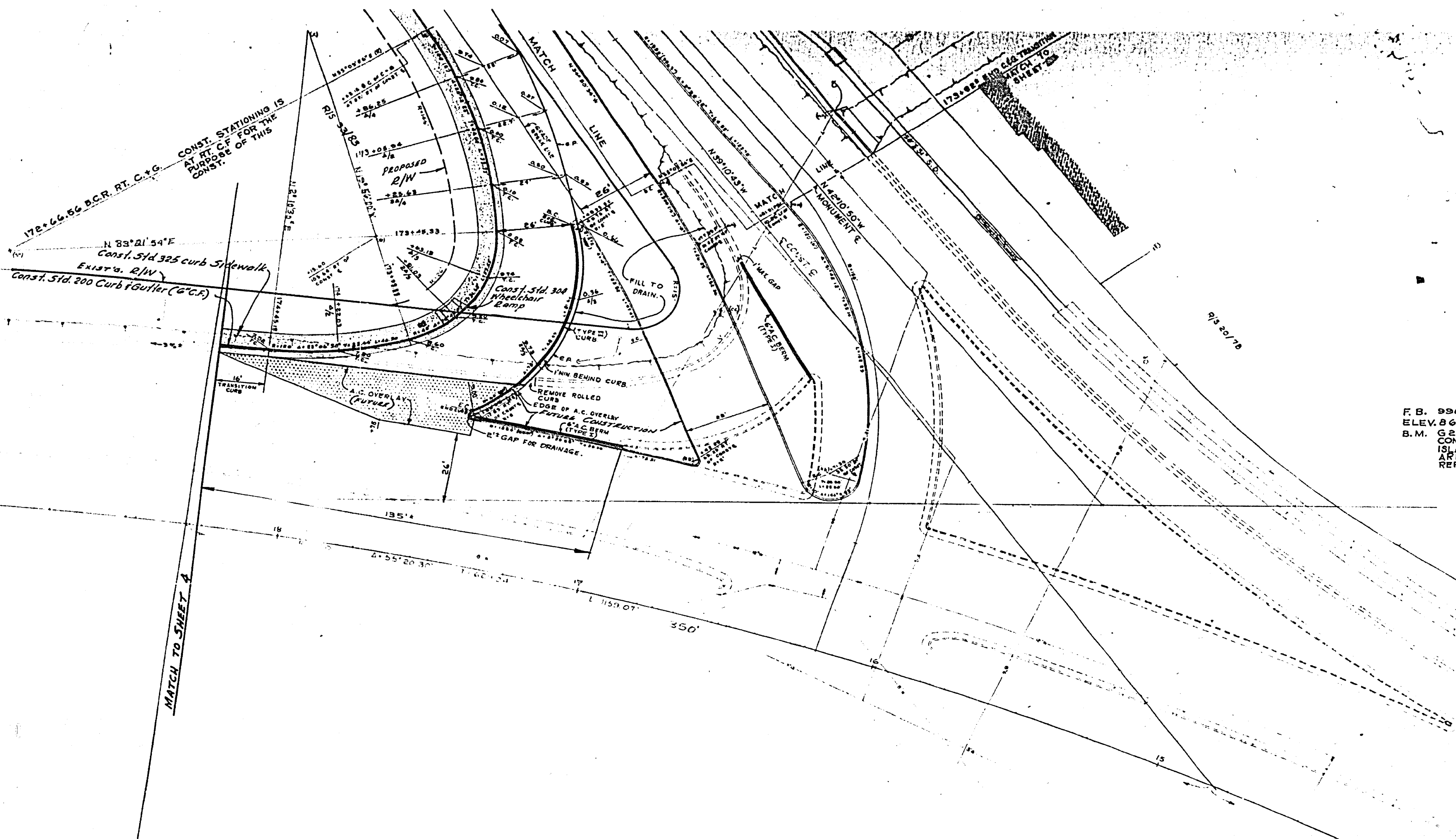
CURVE DATA				
INDEX	R	A	T	L
1				
2				
3				
4				
5				

ALBERT A. WEBB ASSOCIATES
 CIVIL ENGINEERS
 RIVERSIDE, CALIFORNIA
 APPROVED BY: *Albert A. Webb*
 DATE 1-31-77 R.C.E. NO. 9876
 DESIGNED BY: DRAWN BY: CHECKED BY:

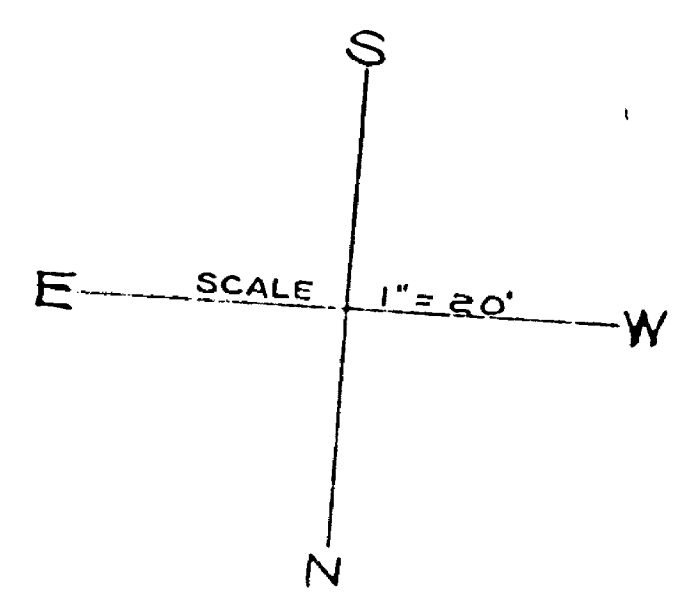
CITY OF RIVERSIDE
PUBLIC WORKS DEPARTMENT
 APPROVED BY: *[Signature]*
 TRAFFIC ENGINEER: *[Signature]*
 CHIEF ENGINEER: *[Signature]*
 DATE 2-16-77

STREET PLAN & PROFILE
LA SIERRA AVENUE
 CURB, GUTTER AND SIDEWALK ONLY
 STA. 166100+ TO STA. 174+00+
 SCALE: - HORIZ. 1"=20' VERT. 1"=2'

R-1950
 SHEET 2 OF 4
 77-117



F.B. 996-70
 ELEV. 865.08
 B.M. 65-A BRASS DISK SET IN
 CONCR. MOST W. WLY TRAFFIC
 ISLAND AT CORNER OF
 ARLINGTON & LA SIERRA.
 REF. F.B. 985-57



SEE SHEET 1 FOR GENERAL NOTES

CAUTION -
 PACIFIC TELEPHONE
 CABLES UNDERGROUND
 BEFORE EXCAVATING
 CALL COLLECT

After Hours
 7:30 A.M. to 5 P.M. & Holidays
 Orange County 714-632-0811 714-547-6429
 Riverside County 714-684-0071 714-547-6429
 Inyo County 714-684-0071 714-547-6429
 San Bernardino County 714-684-0071 714-547-6429
 Los Angeles County 213-421-3111 24 HOUR SERVICE
 Ventura County 213-421-3111
 San Diego County 714-738-0593 714-732-0271

FOR FREE CABLE LOCATING SERVICE

RUHNAU • EVANS • RUHNAU • ASSOCIATES
 Architects Planners
 4200 Orange Street, Riverside, California 92501

CURVE DATA				
INDEX	R	Δ	T	L
1				
2				
3				

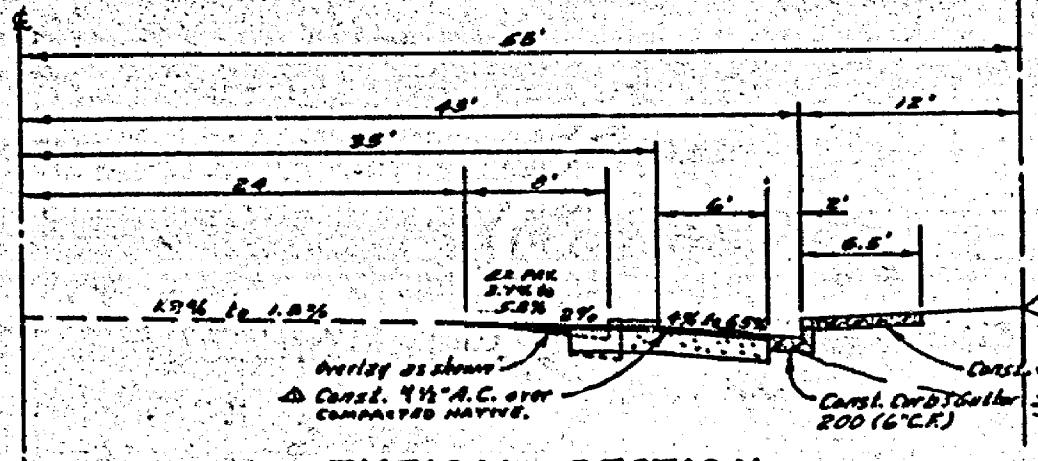
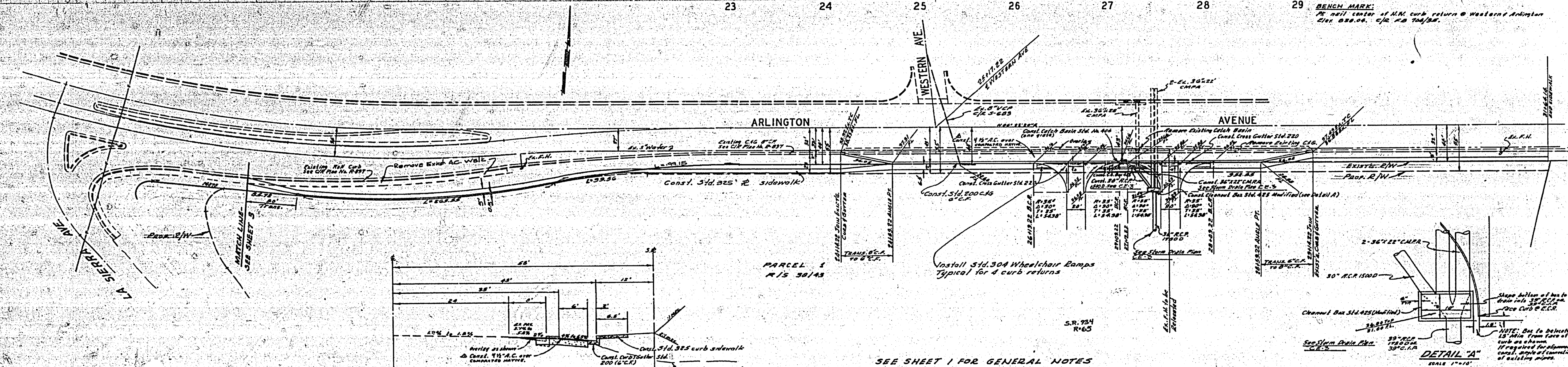
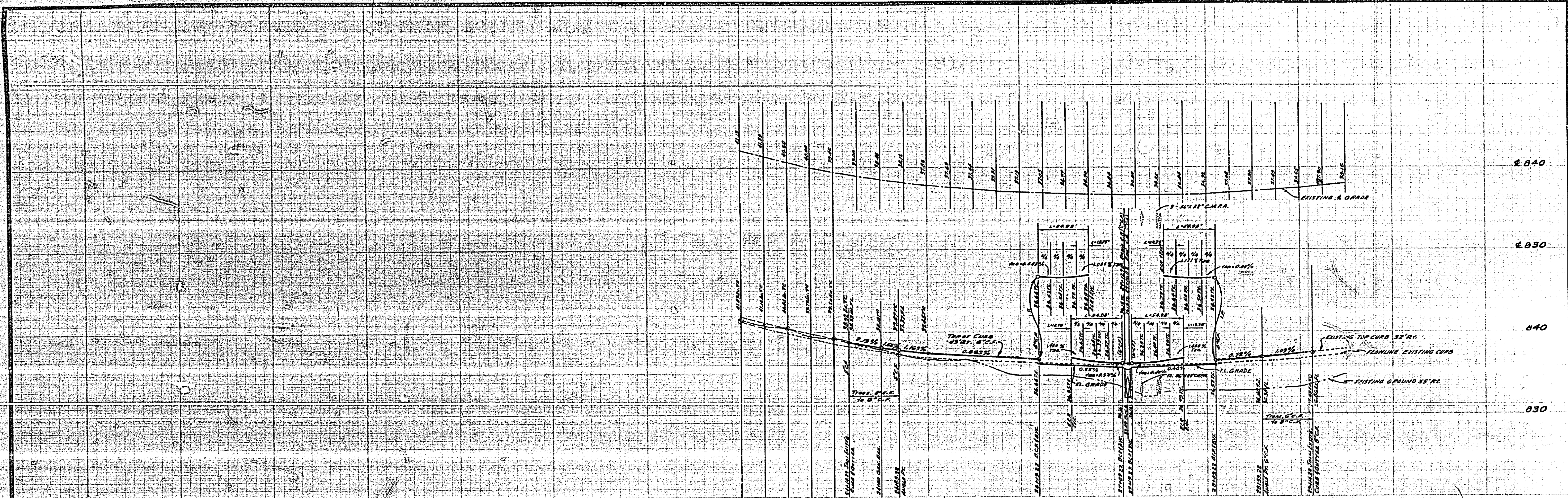
ALBERT A. WEBB ASSOCIATES
 CIVIL ENGINEERS
 RIVERSIDE, CALIFORNIA
 APPROVED BY: *Ernst N. Webb*
 DATE: 1-31-77 R.C.E. NO. 9876

CITY OF RIVERSIDE
PUBLIC WORKS DEPARTMENT

APPROVED BY	APPROVED BY
PRINCIPAL ENGINEER	PUBLIC WORKS DIRECTOR
DATE	DATE

STREET PLAN & PROFILE
LA SIERRA AVENUE
 CURB, GUTTER AND SIDEWALK ONLY
 STA. 166+00.3 TO STA. 174+00.3
 SCALE: 1" = 20'

R-1950
 SHEET 3 OF 4
 77-11-A



ALBERT A. WEBB ASSOCIATES
 CIVIL ENGINEERS
 RIVERSIDE, CALIFORNIA
 APPROVED BY: *[Signature]* DATE: 1/31/77
 R.E. No. 8876

CITY OF RIVERSIDE, CALIFORNIA
 DEPARTMENT OF PUBLIC WORKS
 APPROVED BY: *[Signature]* DATE: 3-16-77
 DIRECTOR OF PUBLIC WORKS

STREET PLAN & PROFILE
 ARLINGTON AVENUE
 South Side
 LA Sierra Avenue to 1400' E/W

PROJECT NO. R-1950
 SHEET 4 OF 4
 FILE NO. 77-11-A
 HORIZ. SCALE: 1" = 50'
 VERT. SCALE: 1" = 5'

RUHNAU · EVANS · RUHNAU · ASSOCIATES
 Architects · Planners
 4200 Orange Street, Riverside, California 92501