

GENERAL NOTES:

1. IT SHALL BE THE RESPONSIBILITY OF THE CONTRACTOR TO CLEAR THE RIGHT OF WAY IN ACCORDANCE WITH THE PROVISIONS OF LAW AS IT AFFECTS EACH UTILITY INCLUDING IRRIGATION LINES, AND APPURTENANCES, AND AT NO COST TO THE CITY.
2. CONSTRUCTION SHALL BE IN ACCORDANCE WITH THE CITY OF RIVERSIDE DEPARTMENT OF PUBLIC WORKS STANDARD DRAWINGS AND THE STANDARD SPECIFICATIONS FOR PUBLIC WORKS CONSTRUCTION, 1976 EDITION.
3. TRIM EDGE OF EXISTING PAVEMENT AS SHOWN ON PLANS TO A SMOOTH STRAIGHT LINE. CONSTRUCT OVERLAY AND MATCH-UP PAVING AS SHOWN ON PLAN AND AS DIRECTED IN FIELD TO PRODUCE A SMOOTH SECTION. ENGINEER ESTIMATES OVERLAY TO BE 4 INCHES.
4. PRIME COAT, SEAL COAT AND PAINT BINDER ARE REQUIRED.
5. CURBS AND GUTTER SHALL BE STAKED WITH 30 FOOT OFFSETS AT 25.0 FOOT INTERVALS AND AT ALL FLAGGED ELEVATIONS SHOWN ON PLANS.
6. NOTICE TO CONTRACTOR: THE EXISTENCE AND LOCATION OF ANY UNDERGROUND UTILITY PIPES OR STRUCTURES SHOWN ON THESE PLANS WERE OBTAINED BY A SEARCH OF THE AVAILABLE RECORDS TO THE BEST OF OUR KNOWLEDGE. THERE ARE NO EXISTING UTILITIES EXCEPT AS SHOWN ON THESE PLANS. THE CONTRACTOR IS REQUIRED TO TAKE DUE PRECAUTIONARY MEASURES TO PROTECT THE UTILITY LINES SHOWN AND ANY OTHER LINES NOT OF RECORD OR NOT SHOWN ON THESE PLANS.
7. TRAFFIC CONTROL SIGNS SHALL BE IN PLACE PRIOR TO OPENING THE STREETS TO TRAFFIC.
8. DRIVEWAY APPROACHES SHALL BE CONSTRUCTED PER CITY OF RIVERSIDE STANDARD DRAWING NO. 302. EXACT SIZE AND LOCATION TO BE DETERMINED AT THE TIME OF CONSTRUCTION AS APPROVED BY THE CITY TRAFFIC ENGINEER.
9. THE SUBDIVIDER SHALL ARRANGE FOR A SOIL TEST TO BE MADE BY A SOILS ENGINEER AFTER THE STREETS HAVE BEEN PREPARED TO RUGH GRADE. DEPTH OF BASE MATERIAL AND A.C. PAVING SHALL BE DETERMINED BY THE CITY OF RIVERSIDE DESIGN STANDARDS AND TEST PROCEDURES.
10. SEE "STREET LIGHTING PLAN" FOR QUANTITY AND LOCATION OF REQUIRED STREET LIGHTS.
11. THE CONTRACTOR SHALL CONTACT THE CITY PARKS AND RECREATION DEPARTMENT'S STREET TREE DIVISION, AT 787-7598 24 HOURS PRIOR TO REMOVAL OF TREES.
12. 4"x6" BLOCKOUTS FOR MAILBOXES REQUIRED IN CURB SW.
13. THE CONTRACTOR SHALL CONTACT THE PUBLIC SERVICE DEPT. (787-7261) TO PICK UP ANY EXIST. STD. 180 BARRICADES THAT ARE BEING REMOVED.

BENCH MARK

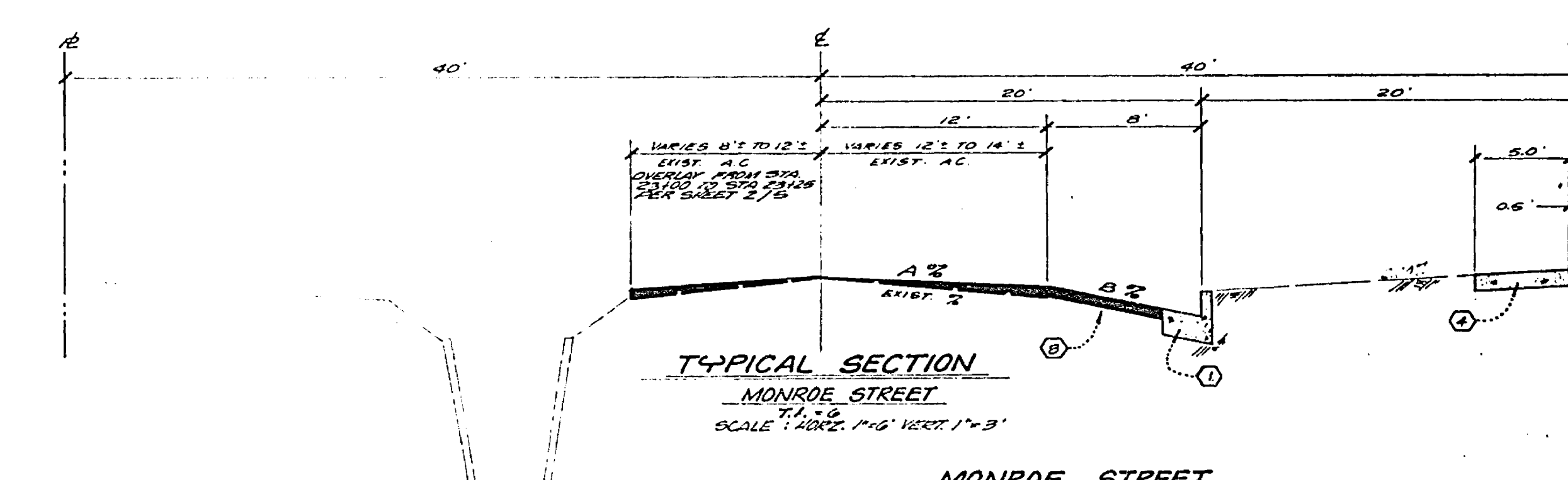
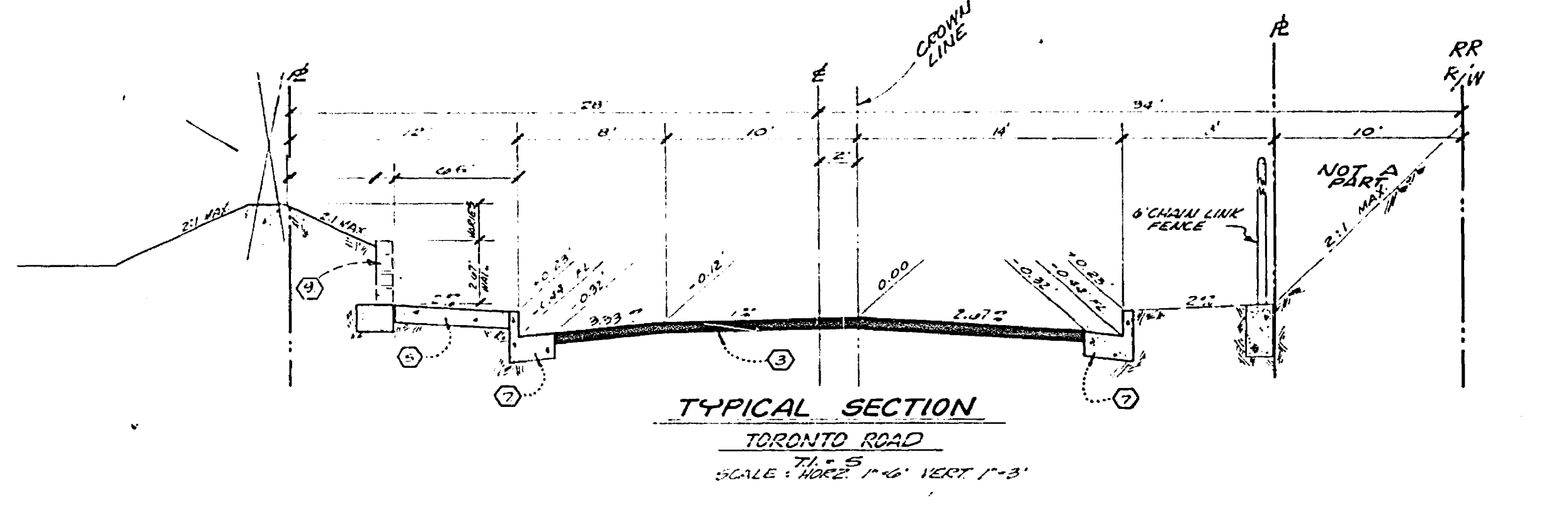
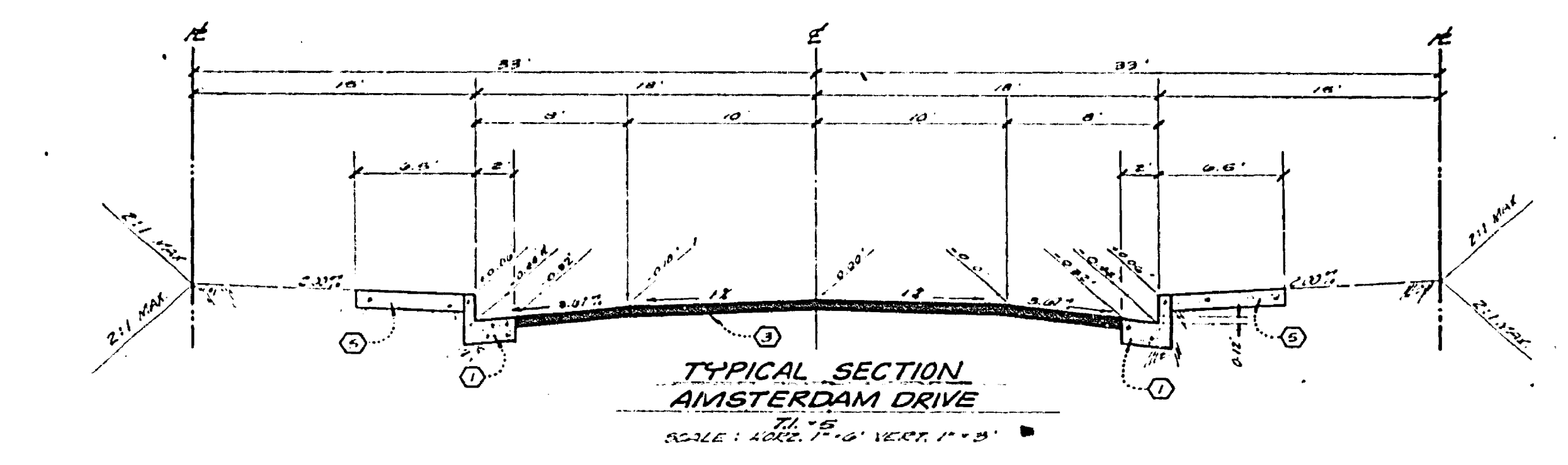
CITY OF RIVERSIDE, 2.5" x 3.5" x 4" CONCRETE BENCH MARK ON RIVERSIDE WATER COMPANY CANAL, CORNER OF W. SIDE MONROE STREET.
ELEV. = 845.60

NOTE:

"The private engineer signing these plans is responsible for assuring the accuracy and acceptability of the work herein. In the event of discrepancies arising during construction as a result of errors or omissions, the private engineer shall be responsible for determining an acceptable solution and revising the plans for approval by the City."

CONSTRUCTION NOTES:

1. CONSTRUCT CURBS AND GUTTER PER CITY OF RIVERSIDE STANDARD DRAWING NO. 200. (6" CURB FACE)
2. CONSTRUCT CONCRETE CROSS GUTTER PER CITY OF RIVERSIDE STANDARD DRAWING NO. 220. (4'0" WIDE)
3. PLACE 2 1/2" OF ASPHALTIC CONCRETE (A.C.) OVER 6 1/2" OF D.G. OR 5 1/2" A.C. OVER COMPACTED NATIVE.
4. CONSTRUCT "PROPERTY LINE" SIDEWALK PER CITY OF RIVERSIDE STANDARD DRAWING NO. 325.
5. CONSTRUCT "CURB" SIDEWALK PER CITY OF RIVERSIDE STANDARD DRAWING NO. 325.
6. CONSTRUCT WHEELCHAIR RAMPS PER CITY OF RIVERSIDE STANDARD DRAWING NO. 304.
7. CONSTRUCT CURB AND GUTTER PER CITY OF RIVERSIDE STANDARD DRAWING NO. 200. (6" CURB FACE)
8. PLACE 3" OF A.C. OVER 9" OF D.G. OR 6 1/2" OF A.C. OVER COMPACTED NATIVE.
9. CONSTRUCT CONCRETE RETAINING WALL PER CR. STD. 201. SEE TYPICAL SECTION SEE LANDSCAPING PLAN FOR MATERIAL, COLOR AND TEXTURE. USE CHAIN LINK FENCE AND ANTI-CRUSHING COATING.
10. CONSTRUCT CONCRETE CROSS GUTTER PER CITY OF RIVERSIDE STANDARD DRAWING NO. 220. (18" WIDE)
11. CONSTRUCT CONCRETE BLOCK WALL PER CR. STD. 202. SEE TYPICAL SECTION.



STREET NAME & TRAFFIC SIGN SCHEDULE

1	MONROE STREET	2900	
2	AMSTERDAM DRIVE	2900-3000	
3	TORONTO ROAD	2800	
4	AMSTERDAM DRIVE	3000-3000	
5	R1 (STOP SIGN) 30" OCTAGON		
6	W3 (NOT A THROUGH ST) 24" X 24"		

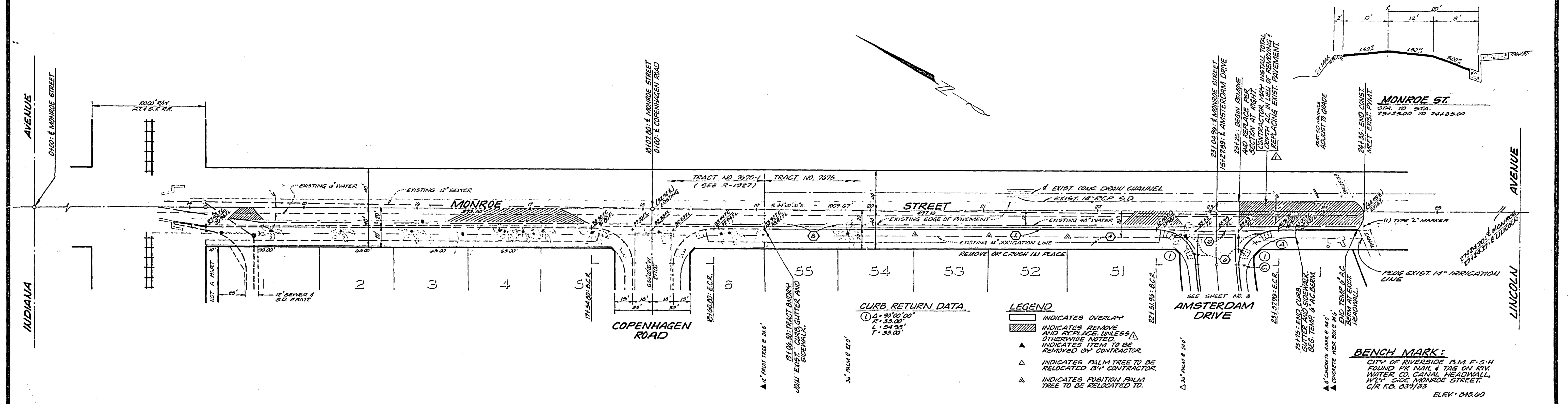
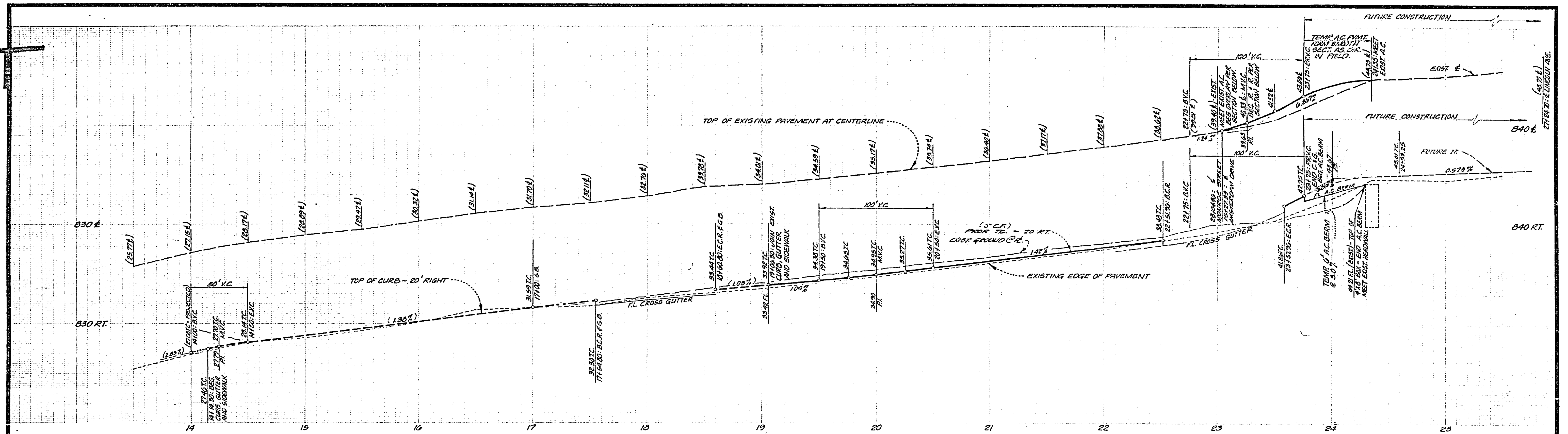
MONROE STREET CROSS FALL CHART

STATION	EXIST. %	A %	B %	REMARKS
19+50.00	3.7%	2.3%	5.0%	OVERLAY
20+00.00	3.4%	2.2%	5.0%	OVERLAY
20+50.00	2.50%	1.8%	5.0%	OVERLAY
21+00.00	2.4%	1.7%	5.0%	OVERLAY
21+50.00	2.6%	1.7%	5.0%	OVERLAY
22+00.00	2.7%	1.7%	5.0%	OVERLAY
22+50.00	1.5%	2.0%	5.0%	REPLACE & REPLACE
23+00.00	1.2%	1.0%	5.0%	OVERLAY
23+25.00				
24+00.00				
24+35.00				

J. F. DAVIDSON ASSOCIATES
CIVIL ENGINEERS-SURVEYORS-PLANNERS
RIVERSIDE, CALIFORNIA
APPROVED BY: *J. F. Davidson* DATE: 10/24/72
R.E. No. 17000
W.D. 3888 FOR TEST AND CO. P.S. 1009

CITY OF RIVERSIDE, CALIFORNIA
DEPARTMENT OF PUBLIC WORKS
APPROVED BY: *[Signature]* DATE: 11/1/72
OFFICE ENGINEER
TRAFFIC DIVISION
ASSISTANT CITY ENGINEER
PLANNING

TITLE SHEET
TRACT 7675
STREET PLAN & PROFILE
HORIZ. SCALE: 1" = 40' VERT. SCALE: 1" = 4'
PROJECT NO. R-1952
SHEET 1 OF 5
FILE NO. 6501



CURB RETURN DATA

①	0 - 90'00"
②	0 - 33'00"
③	0 - 33'00"
④	0 - 33'00"

- LEGEND**
- ▭ INDICATES OVERLAY
 - ▨ INDICATES REMOVE AND REPLACE UNLESS OTHERWISE NOTED
 - ▲ INDICATES ITEM TO BE REMOVED BY CONTRACTOR
 - △ INDICATES PALM TREE TO BE RELOCATED BY CONTRACTOR
 - ◻ INDICATES POSITION PALM TREE TO BE RELOCATED TO

NOTE:
FOR TYPICAL SECTION GENERAL AND CONSTRUCTION NOTES, SEE SHEET 1.

IRRIGATION OWNER
DATE: 2-26-77

WATER DEPARTMENT
DATE: 2-24-77

J. F. DAVIDSON ASSOCIATES
CIVIL ENGINEERS - SURVEYORS - PLANNERS
RIVERSIDE, CALIFORNIA
APPROVED BY: [Signature] DATE: 7/20/74
(R.E. No. 17350)

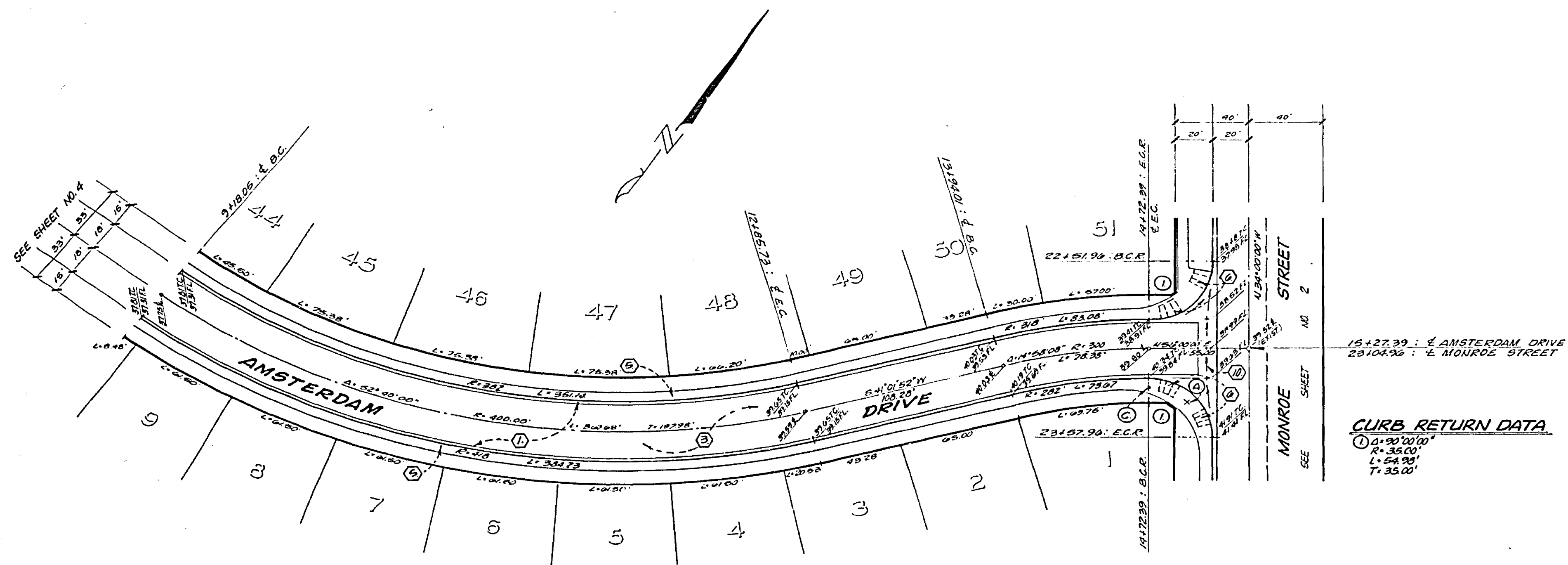
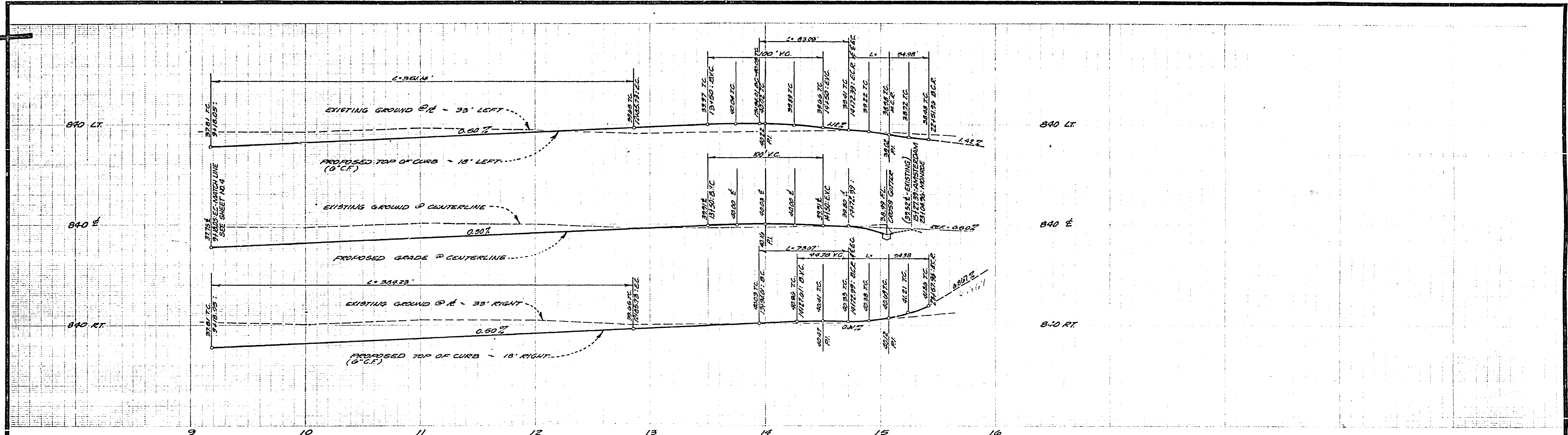
MARK	REVISIONS	DATE

CITY OF RIVERSIDE, CALIFORNIA
DEPARTMENT OF PUBLIC WORKS
APPROVED BY: [Signature] DATE: 4-5-77
DIRECTOR OF PUBLIC WORKS

STREET PLAN & PROFILE
TRACT 7675
MONROE STREET
STA. 19+00.30 TO STA. 24+35.00

PROJECT NO. **R-1952**
SHEET **2** OF **5**
FILE NO. **5601**

HORIZ. SCALE: 1" = 40' VERT. SCALE: 1" = 4'



NOTE:
FOR TYPICAL SECTION, GENERAL AND
CONSTRUCTION NOTES, SEE SHEET NO. 1.

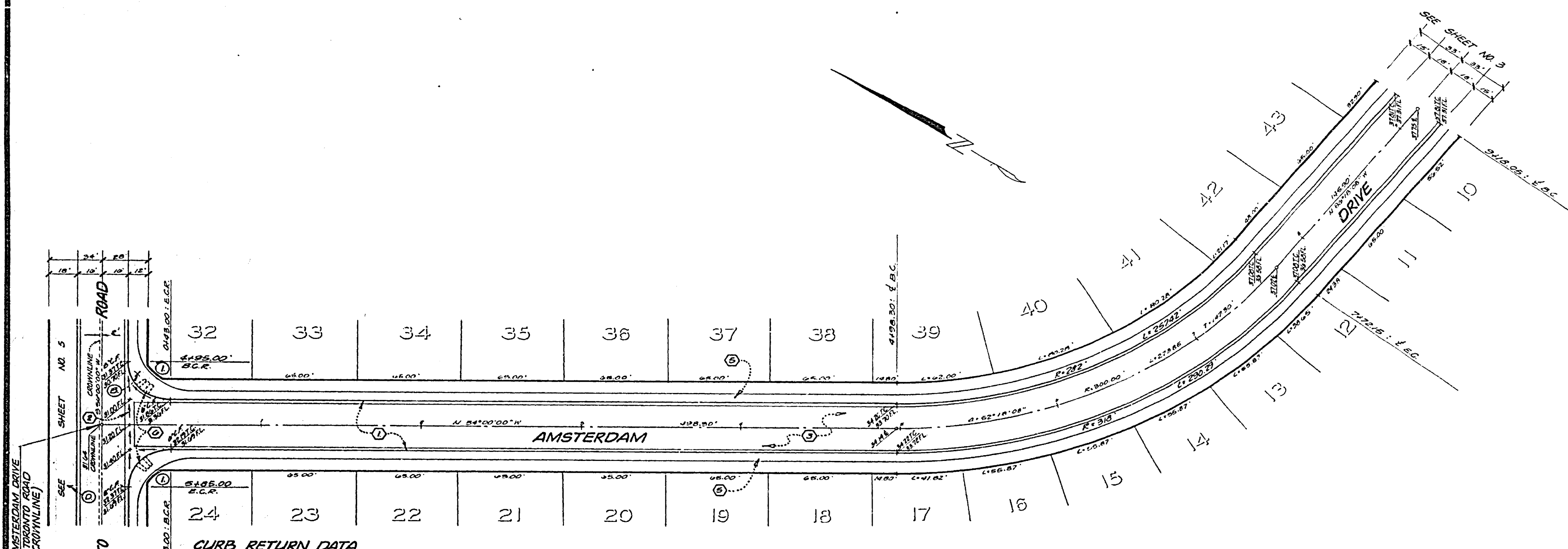
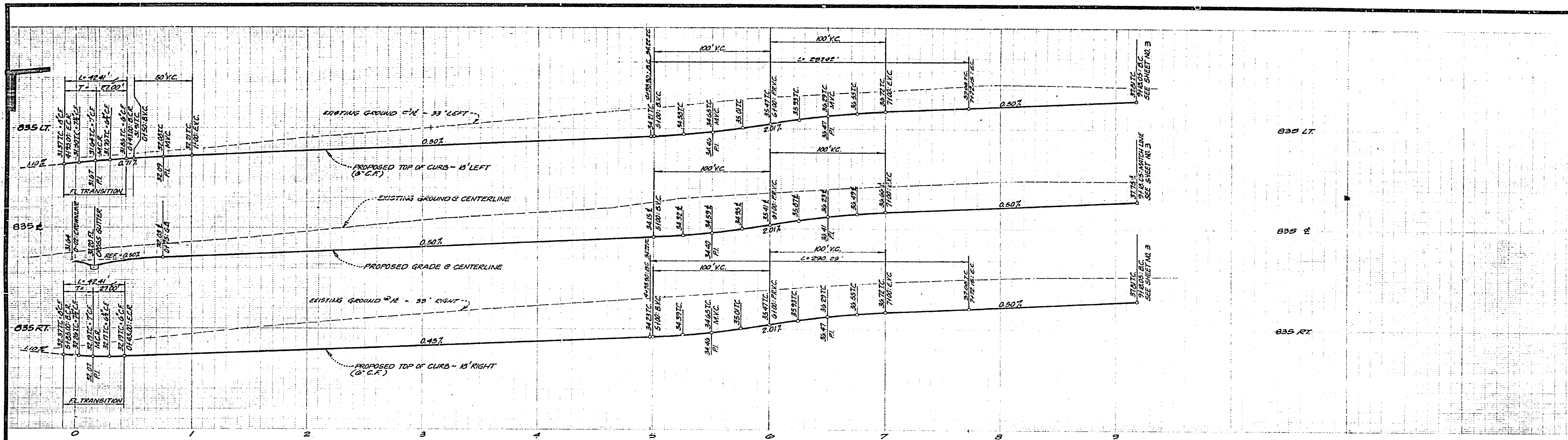
J. F. DAVIDSON ASSOCIATES
CIVIL ENGINEERS - SURVEYORS - PLANNERS
RIVERSIDE, CALIFORNIA
APPROVED BY: *[Signature]* DATE: 10/12/74
P.E. NO. 13250
W.O. 9938 FOR: KENT LAND CO. F.B. 1079

MARK	REVISIONS	APP. DATE

CITY OF RIVERSIDE, CALIFORNIA
DEPARTMENT OF PUBLIC WORKS
APPROVED BY: *[Signature]* DATE: 4-8-77
PRINCIPAL ENGINEER
PARK DEPARTMENT
TRAFFIC DIVISION
CHIEF OF WORKS
FURNISHING

STREET PLAN & PROFILE
TRACT 7075
AMSTERDAM DRIVE
STA 9118.05 TO STA 15127.39
HORIZ. SCALE: 1" = 40' VERT. SCALE: 1" = 4'

PROJECT NO.
R-1952
SHEET **3** OF **5**
FILE NO. 8501



CURB RETURN DATA
 ① $R = 2700'$
 $L = 450'$
 $T = 2700'$

NOTE:
 FOR TYPICAL SECTION GENERAL AND CONSTRUCTION NOTES, SEE SHEET NO. 1

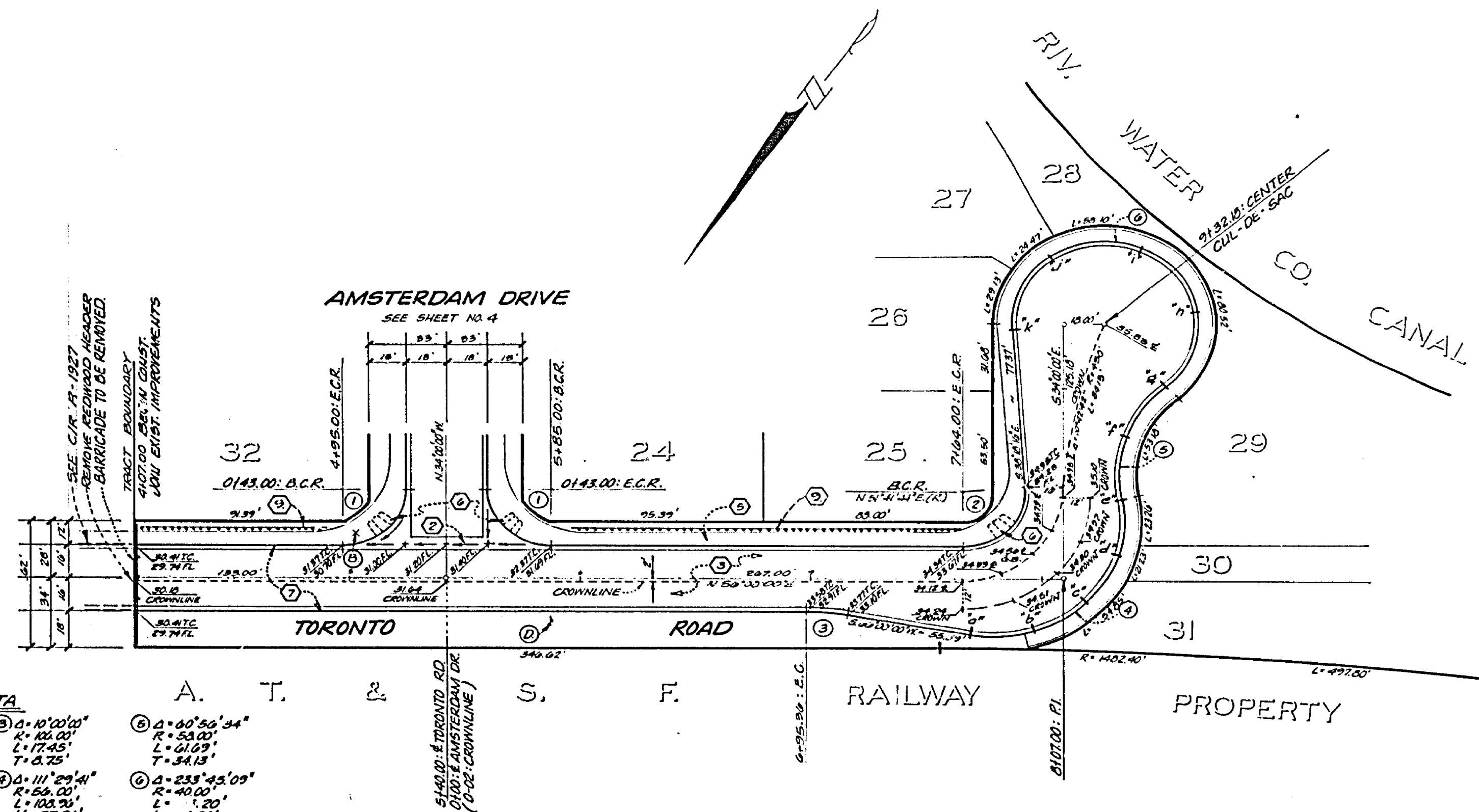
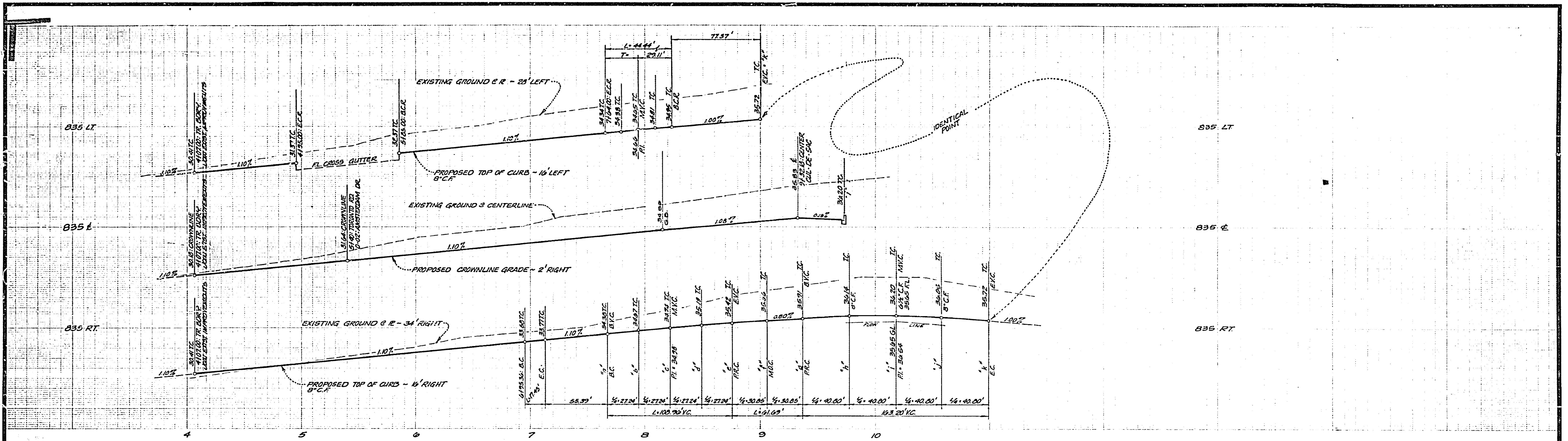
J. F. DAVIDSON ASSOCIATES
 CIVIL ENGINEERS - SURVEYORS - PLANNERS
 RIVERSIDE, CALIFORNIA
 APPROVED BY: *[Signature]* DATE: 10/11/52
 P.E. No. 17550

NO.	REVISIONS	DATE

CITY OF RIVERSIDE, CALIFORNIA
 DEPARTMENT OF PUBLIC WORKS
 APPROVED BY: *[Signature]* DATE: 4-9-52
 TRAFFIC DIVISION
 CHIEF P. W. ENGR. *[Signature]*

BENCH MARK
 CITY OF RIVERSIDE B.M. F-5-H
 FOUND BY NAIL TAG IN RIVER-
 SIDE WATER CO CANAL HEAD-
 WALL, W. 1/4 SIDE MARQUE ST.
 C.R. PA. 339/33
 ELEV. 845.60

STREET PLAN AND PROFILE	PROJECT NO.
TRACT 7675 AMSTERDAM DRIVE STA. 0100.00 TO STA. 913.05	R-1952
HORIZ. SCALE: 1" = 40'	VERT. SCALE: 1" = 4'
SHEET 4 OF 5	FILE NO. 5501



CURB CURVE DATA

① Δ = 90°00'00" R = 37.00' L = 42.41' T = 27.00'	② Δ = 90°00'00" R = 102.00' L = 17.45' T = 6.25'	③ Δ = 90°50'34" R = 55.00' L = 61.09' T = 34.13'
④ Δ = 94°15'10" R = 37.00' L = 44.84' T = 29.11'	⑤ Δ = 111°29'40" R = 54.00' L = 102.29' T = 27.24'	⑥ Δ = 233°42'09" R = 40.00' L = 1.20' T = 42.00'

NOTE:
FOR TYPICAL SECTION GENERAL AND CONSTRUCTION NOTES, SEE SHEET NO. 1

J. F. DAVIDSON ASSOCIATES
CIVIL ENGINEERS - SURVEYORS - PLANNERS
RIVERSIDE, CALIFORNIA
APPROVED BY: *J.F. Davidson* DATE: 10/11/66
R.E. No. 175592
W.O. 4938 FOR KENT LAND CO. F.B. 1099

MARK	REVISIONS	APPR.	DATE

CITY OF RIVERSIDE, CALIFORNIA
DEPARTMENT OF PUBLIC WORKS
APPROVED BY: *[Signature]* DATE: 4-9-77
PRINCIPAL ENGINEER
TRAFFIC DIVISION
CHIEF P. W. ENGR.
DESIGNED BY: *[Signature]* DRAWN BY: *[Signature]* CHECKED BY: *[Signature]*

STREET PLAN & PROFILE		PROJECT NO.
TRACT 7675		R-1952
TORONTO ROAD		SHEET 5 OF 5
STA 4107.00 TO STA 9132.18		FILE NO. 5501
HORIZ. SCALE: 1" = 40'		VERT. SCALE: 1" = 4'