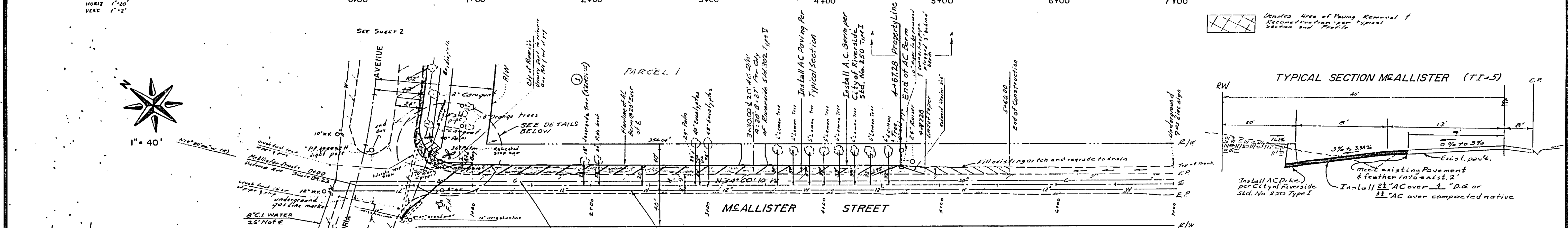
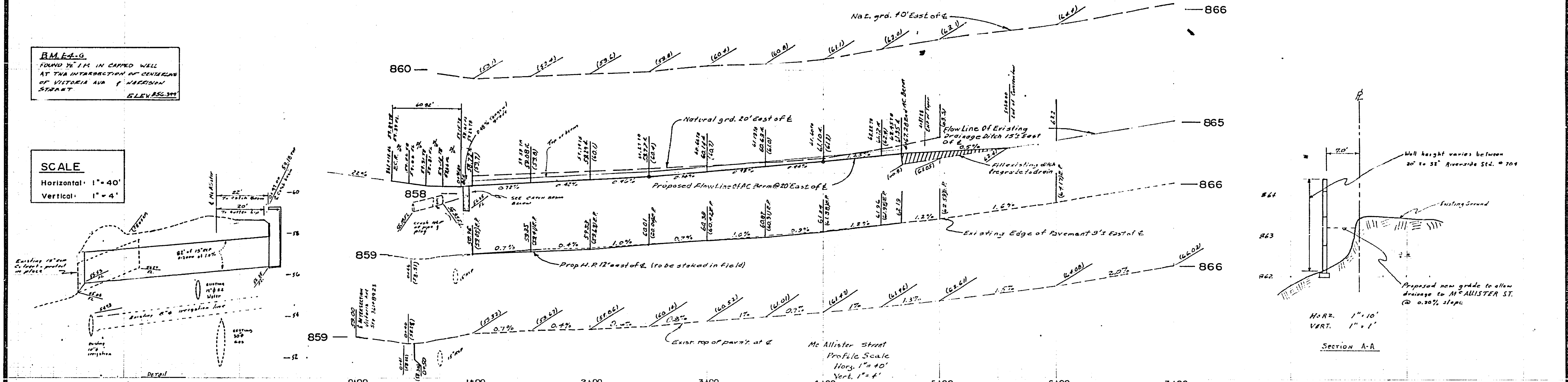


B.M. ELEV.
 FOUND TO 1.12 IN CAPED WELL
 AT THE INTERSECTION OF CENTERLINE
 OF VICTORIA AV & HARRISON
 STREET
 ELEV. 856.371

SCALE
 Horizontal: 1" = 40'
 Vertical: 1" = 4'



NOTE:
 The City of Riverside shall be given 24 hour notification prior to any work in or around irrigation facilities. Telephone number (714) 953-9122.

GENERAL NOTES:

- It shall be the responsibility of the contractor to clear the right of way in accordance with the provisions of law as it affects each utility including irrigation lines and appurtenances and at no cost to the city.
- Construction shall be in accordance with the City of Riverside, Department of Public Works, Standard Drawings, and the Standard Specifications for Public Works Construction, 1976 Edition.
- Trim edge of existing pavement where new pavement joins to a smooth, straight line. Construct match-up paving as shown on plan and overlay paving as directed in the field to produce a smooth section.
- AC Berm shall be staked with 3' offset at 25' intervals.

SR 916 R=57

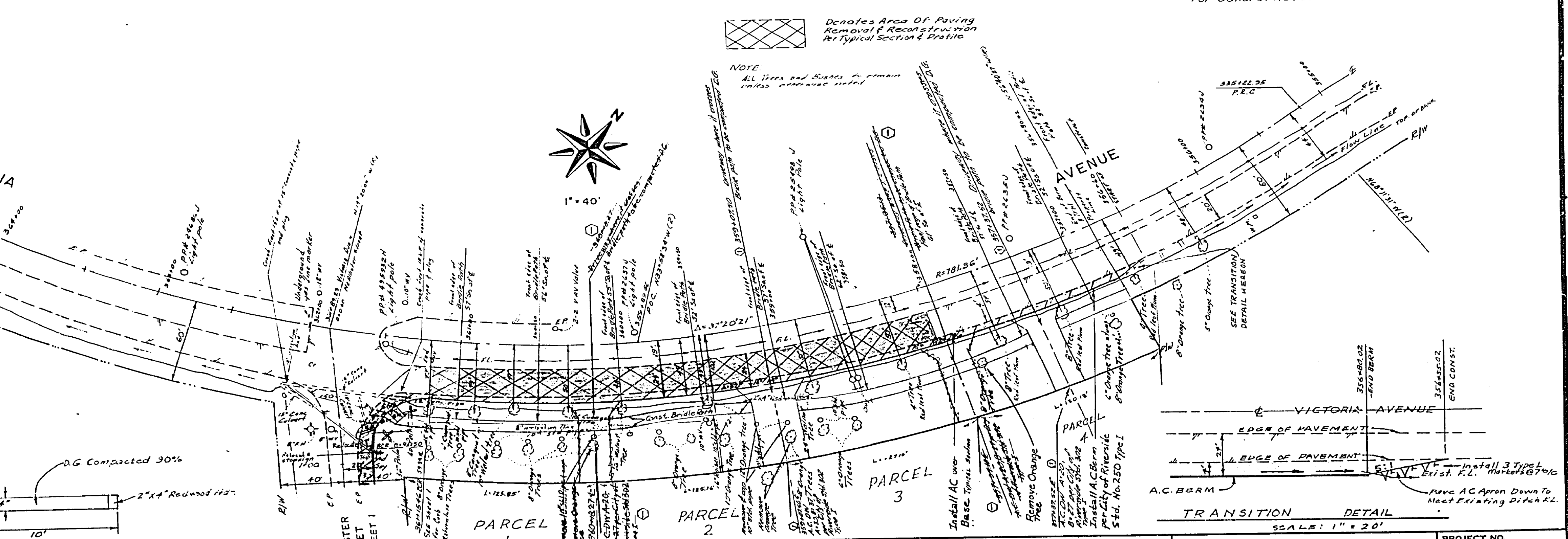
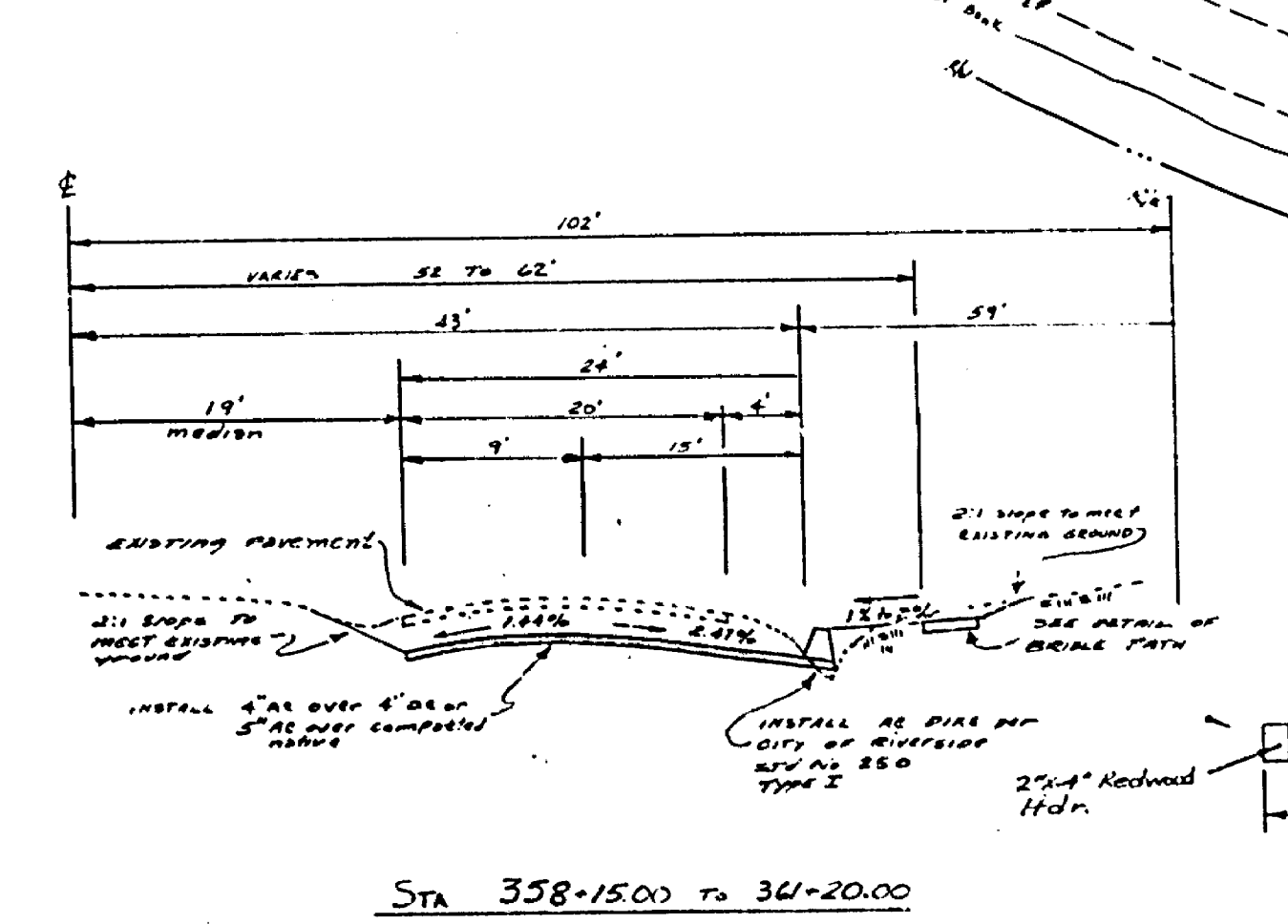
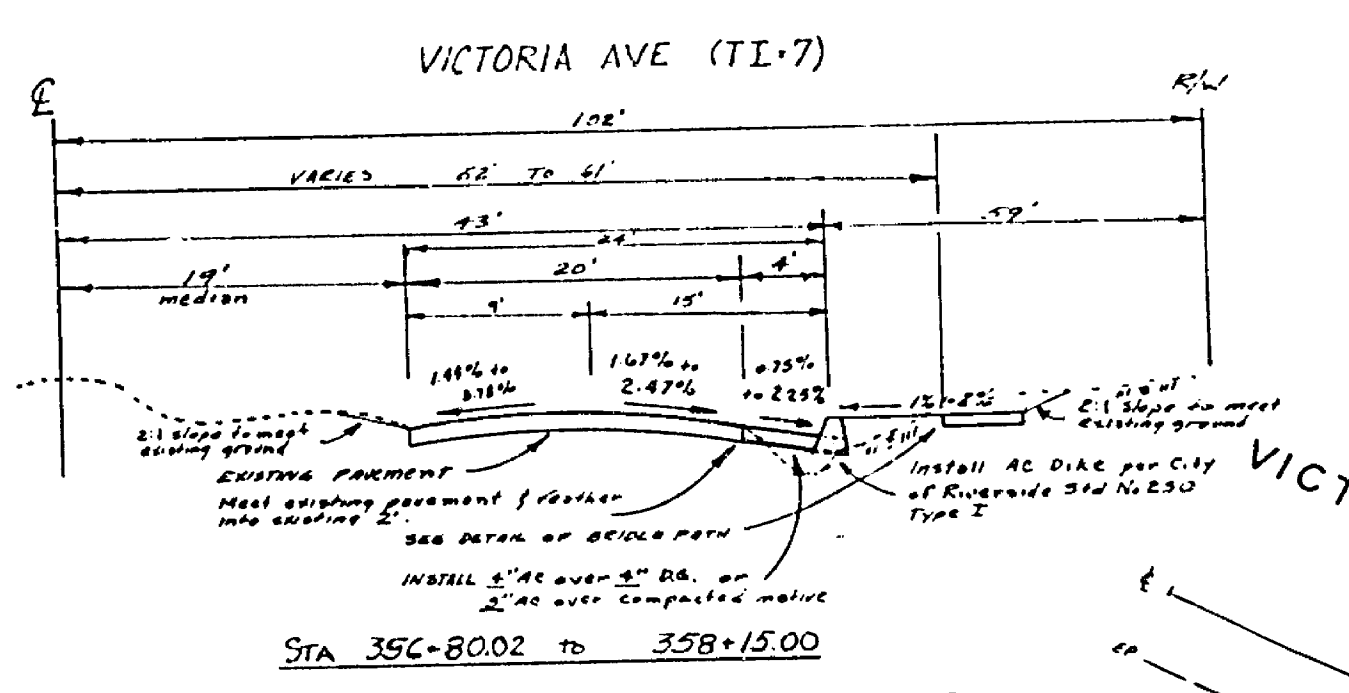
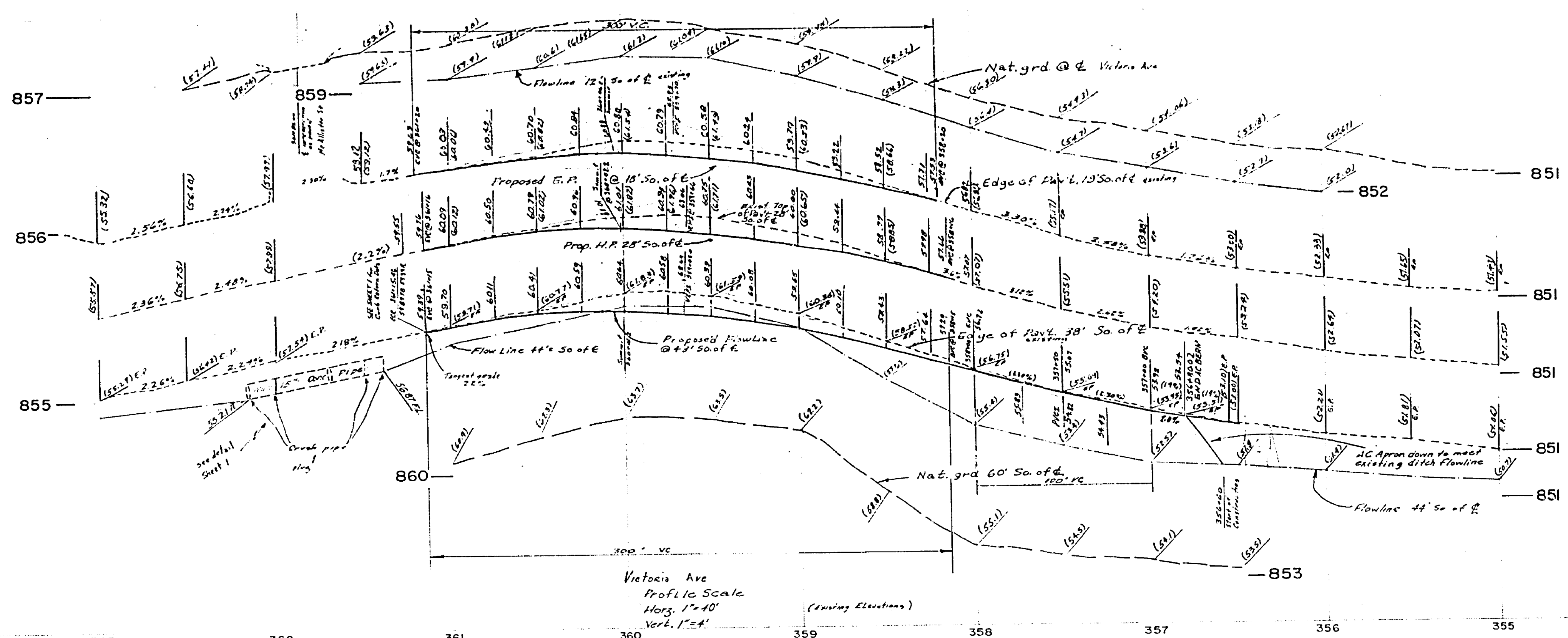
RETURN DATA
 At 90° 34' 01" CT
 R = 35'
 L = 4139'
 L = 60.92'

CATCH BASIN DETAIL
 NO SCALE

krueper engineering & associates civil engineering • land surveying 568 north mountain view, suite 230 san bernardino, california 92401 884-2141 DATE JULY 76 Calif Reg. No. 12953	DESIGNED BY: _____ DRAWN BY: R.G. CHECKED BY: K.P.	CITY OF RIVERSIDE, CALIFORNIA DEPARTMENT OF PUBLIC WORKS APPROVED BY: _____ DATE: 7/23/77 TRAFFIC DIVISION: _____ CHIEF P. W. ENGR.: _____ DATE: 4-15-77	IMPROVEMENT PLAN MC ALLISTER STREET PARCEL MAP NO. 8079 HORIZ. SCALE: 1" = 40' VERT. SCALE: 1" = 4'	INDEXED TO: PROJECT NO. R-1957 SHEET 1 OF 2 FILE NO.
	GAGE CANAL CO. APPROVAL ON IRRIGATION FACILITIES BY: P. L. Lau DATE 3/25/77			END OF CONSTRUCTION

B.M. E-1-G
 FOUND IN I.P. IN CAPPED WELL
 AT THE INTERSECTION OF CENTERLINE
 OF VICTORIA AVE & HARRISON
 STREET
 ELEV. 856.374'

SCALE
 Horizontal 1" = 40'
 Vertical 1" = 4'



GAGE CANAL CO. APPROVAL ON/REVISION FRONTIER
 BY *[Signature]* DATE 3/15/77

KE krueper engineering & associates
 civil engineering - land surveying
 508 north mountain view, suite 200
 san bernardino, california 92401
 884-2159
 DATE JULY 76

NO.	REVISIONS	DATE	BY

CITY OF RIVERSIDE, CALIFORNIA
 DEPARTMENT OF PUBLIC WORKS
 APPROVED BY *[Signature]* DATE *[Date]*
 PRINCIPAL ENGINEER
 TRAFFIC DIVISION
 APPROVED BY *[Signature]* DATE *[Date]*
 DIRECTOR OF PUBLIC WORKS

IMPROVEMENT PLAN
VICTORIA AVENUE
 PARCEL MAP NO. 8079
 PROJECT NO. **R-1957**
 SHEET **2** OF **2**
 HORIZ. SCALE: 1" = 40' VERT. SCALE: 1" = 4'