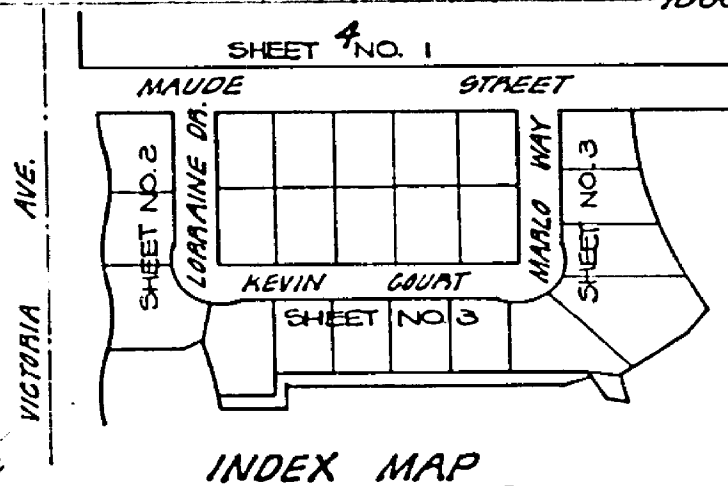


STREET NAME & TRAFFIC SIGN SCHEDULE	TRAFFIC SIGN SCHEDULE
MAUDE ST.	2000
LOLAINE DR.	0500
MAUDE ST.	2000
MARLOW WAY	0500
LOLAINE DR.	0500
KEVIN CT.	2000
MARLOW WAY	0500
MAUDE ST.	2000
RT. (510' SIGN) 30' OCTAGON	2000

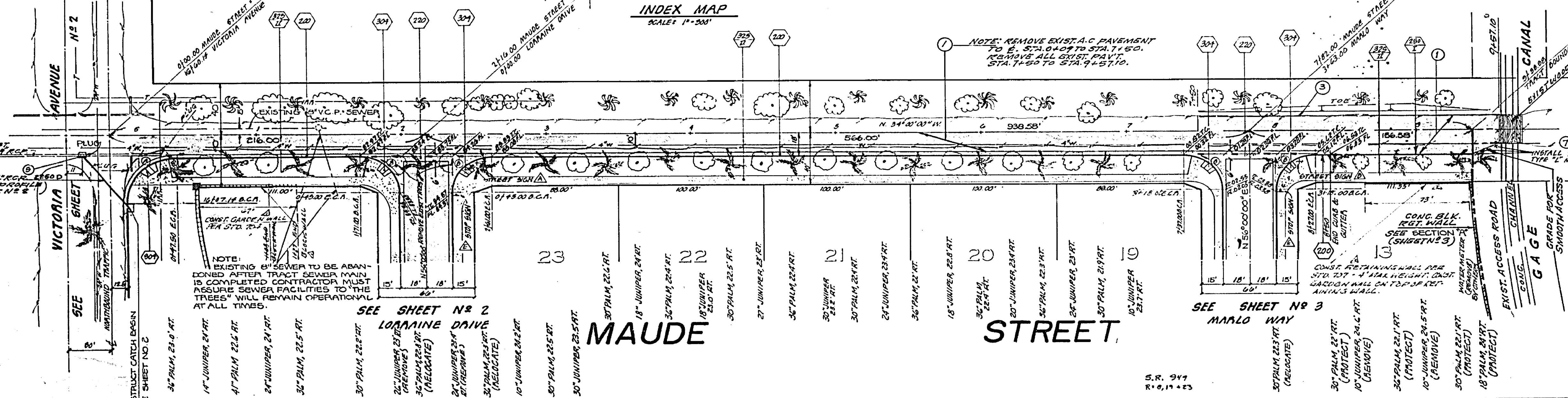


QUAD CORNER DATA	RADIUS	DELTA	TANGENT	CHORD
A	35.00'	20°30'00"	35.00'	54.98'
B	77.00'	20°30'00"	77.00'	42.41'

GENERAL NOTES CONTINUED:

- ALL OVERHANGING TREE LIMBS THAT ARE LESS THAN 15' ABOVE THE STREET GRADE SHALL BE TRIMMED BACK.
- 4" x 4" BLOCKOUTS FOR MAILBOXES REQUIRED IN CURB S/W.
- CONTACT THE PARK AND RECREATION DEPT. TREE DIVISION AT 787-7598 24 HOURS PRIOR TO RELOCATION OF TREES.
- NOTIFY TRAFFIC ENGINEERING DIVISION AT 787-7300 PRIOR TO PAVING MAUDE ST. SO THAT EDGE STRIPING BETWEEN MARLOW WAY AND GAGE CANAL MAY BE COORDINATED.

- CONSTRUCTION LEGEND**
- (200) CONSTRUCT CURB & GUTTER, TYPE I, PER STANDARD DRAWING # 200 WITH 6" CURB FACE.
 - (220) CONSTRUCT 6" CROSS GUTTER PER STANDARD DRAWING # 220.
 - (250) CONSTRUCT A.C. BEAM, TYPE I, PER STANDARD DRAWING # 250.
 - (304) CONSTRUCT WELLSHIA RAMP PER STANDARD DRAWING # 304.
 - (320) CONSTRUCT 6" CURB SIDEWALK PER STANDARD DRAWING # 320.
 - (325) CONSTRUCT 6" SIDEWALK PER STANDARD DRAWING # 325.
 - (400) CONSTRUCT CATCH BASIN PER STANDARD DRAWING # 400.
 - (405) V = 3.75'.
 - (704) CONST. 6" HIGH BLOCK WALL PER STD. DWG. # 704.
 - (1) CONSTRUCT 2 1/2" A.C. OVER 1" DG. BASE (SEE NOTE NO. 3 BELOW).
 - (2) CONSTRUCT 2 1/2" A.C. OVER 1" DG. BASE (SEE NOTE NO. 3 BELOW).
 - (3) CONSTRUCT 2 1/2" A.C. OVER 1" DG. BASE (SEE NOTE NO. 3 BELOW).
 - (4) CONSTRUCT 2 1/2" A.C. OVER 1" DG. BASE (SEE NOTE NO. 3 BELOW).
 - (5) CONSTRUCT 2 1/2" A.C. OVER 1" DG. BASE (SEE NOTE NO. 3 BELOW).
 - (6) CONSTRUCT 2 1/2" A.C. OVER 1" DG. BASE (SEE NOTE NO. 3 BELOW).
 - (7) CONSTRUCT 2 1/2" A.C. OVER 1" DG. BASE (SEE NOTE NO. 3 BELOW).
- GENERAL NOTES**
- CONSTRUCTION SHALL BE IN ACCORDANCE WITH THE STANDARD SPECIFICATIONS FOR PUBLIC WORKS CONSTRUCTION 1978 EDITION, AND CITY OF RIVERSIDE STANDARD DRAWINGS.
 - ALL PLACED ELEVATIONS SHALL BE STAKED IN THE FIELD BY THE PRIVATE ENGINEER.
 - THE RESPONSIBILITY SHALL ARRANGE FOR A 60% TEST TO BE MADE BY A SOIL ENGINEER AFTER THE STREETS HAVE BEEN PREPARED TO ACHIEVE A 10% BENCH MARK AND A.C. FINISH SHALL BE DETERMINED BY THE CITY OF RIVERSIDE DESIGN STANDARDS AND TEST PROCEDURES.
 - CONSTRUCT DRAINWAY APPROACHES PER STD. DWG. 300. EXACT SIZE AND LOCATION TO BE DETERMINED AT THE TIME OF CONSTRUCTION AS APPROVED BY THE TRAFFIC ENGINEER.
 - TRAFFIC CONTROL SIGNS MUST BE IN PLACE PRIOR TO OPENING STREETS TO TRAFFIC.
 - CURB SHALL BE STAKED AT A 5' OFFSET AND 20' INTERVALS, EXCEPT WHERE SHOWN OTHERWISE.
 - IT SHALL BE THE RESPONSIBILITY OF THE CONTRACTOR TO CLEAN THE RIGHT OF WAY IN ACCORDANCE WITH THE PROVISIONS OF LAW. IT AFFECTS EACH UTILITY INCLUDING IRRIGATION LINES AND APPURTENANCES AND AT NO COST TO THE CITY.
 - THE EDGE OF EXISTING PAVEMENT UNDER NEW PAVEMENT SHALL BE TO A SMOOTH STRAIGHT LINE. CONTRACTOR SHALL REMOVE ALL EXISTING PAVEMENT ON PLAN AND OVERLAY FINISH AS DIRECTED IN THE FIELD TO PRODUCE A SMOOTH SECTION. CONTRACTOR SHALL REMOVE ALL EXISTING PAVEMENT TO A SMOOTH STRAIGHT LINE. CONTRACTOR SHALL REMOVE ALL EXISTING PAVEMENT TO A SMOOTH STRAIGHT LINE.
 - SEE LANDSCAPING AND STAKING SYSTEM PLANS FOR PARKWAY IN VICTORIA AVENUE.
 - PROTECT ALL EXISTING TREES BEHIND PROPOSED CURB UNLESS OTHERWISE STATED IN PLANS.



NOTE: THE PRIVATE ENGINEER SIGNING THESE PLANS IS RESPONSIBLE FOR THE ACCURACY AND ACCEPTABILITY OF THE WORK HEREON. IN THE EVENT OF DISCREPANCIES ARISING DURING CONSTRUCTION, THE PRIVATE ENGINEER SIGNING THESE PLANS SHALL BE RESPONSIBLE FOR DETERMINING AN ACCEPTABLE SOLUTION AND REVISIONS TO THE PLANS FOR APPROVAL BY THE CITY.

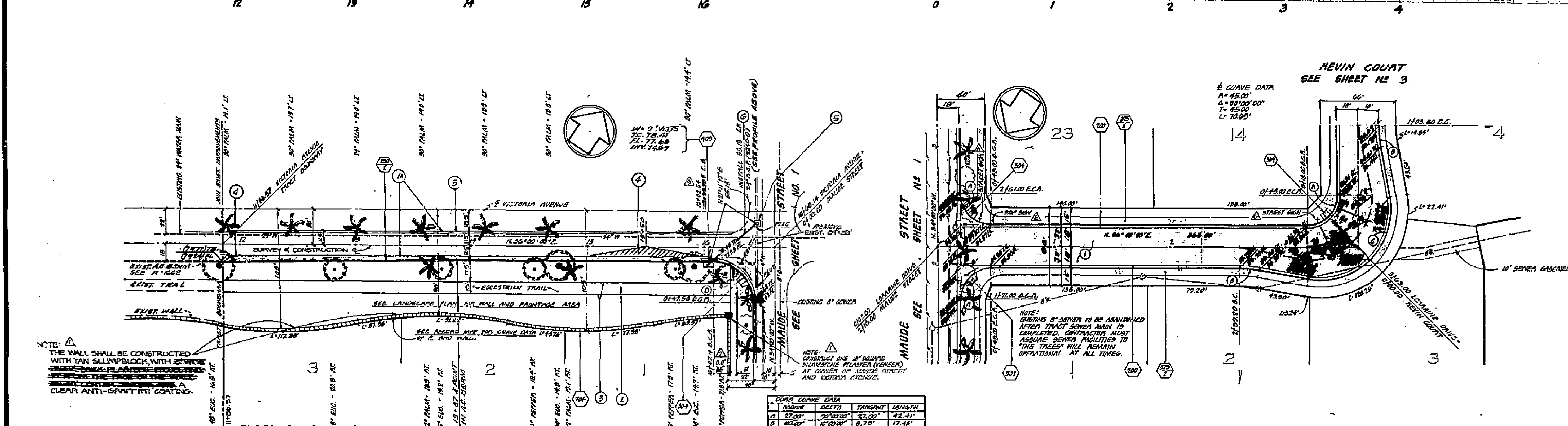
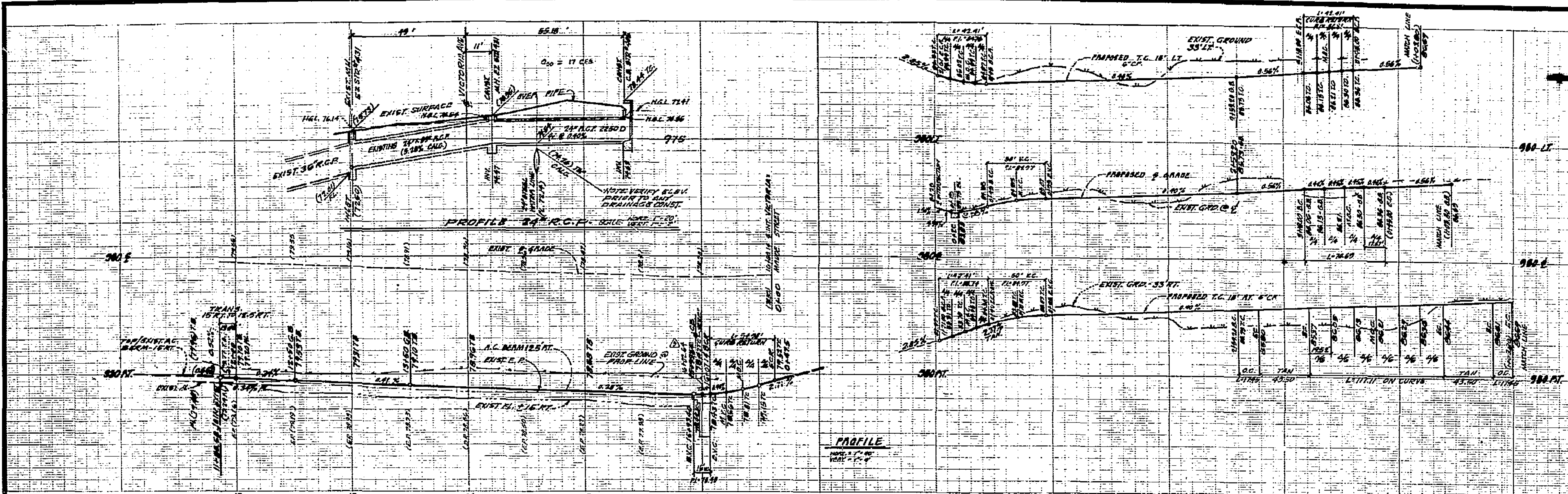
GAGE CANAL
APPROVED BY: [Signature]
DATE: 5/14/77
PLANNING DEPARTMENT
APPROVED BY: [Signature]
DATE: 5-11-77

HAWKINS, ROBERTSON & ASSOCIATES
ENGINEERS - SURVEYORS
DATE: 11/1/76
Charles E. Robertson
R.C.E. 15010
BENCH MARK: P&A FOUND ORASS DISC STAMPED (10-A) CAPPED AT INTERSECTION OF VICTORIA AVE. & WASHINGTON STREET, P.B. 135-3 ELEV. 921.000

NO.	DESCRIPTION	DATE
1	ADDED STRUCTURAL SECTION #10	11/1/76
2	ADDED RETAINING WALL SECTION #10	11/1/76
3	ADDED 1/2" A.C. OVER 1" DG. BASE SECTION #10	11/1/76

CITY OF RIVERSIDE, CALIFORNIA
DEPARTMENT OF PUBLIC WORKS
APPROVED BY: [Signature]
DATE: 4/21/77

TRACT NO. 8327
STREET PLAN AND PROFILE
MAUDE STREET
INDEXED 2A
PROJECT NO. R-1964
SHEET 1 OF 3
HORIZ. SCALE: 1" = 40'
VERT. SCALE: 1" = 4'
FILE NO. 76-2660

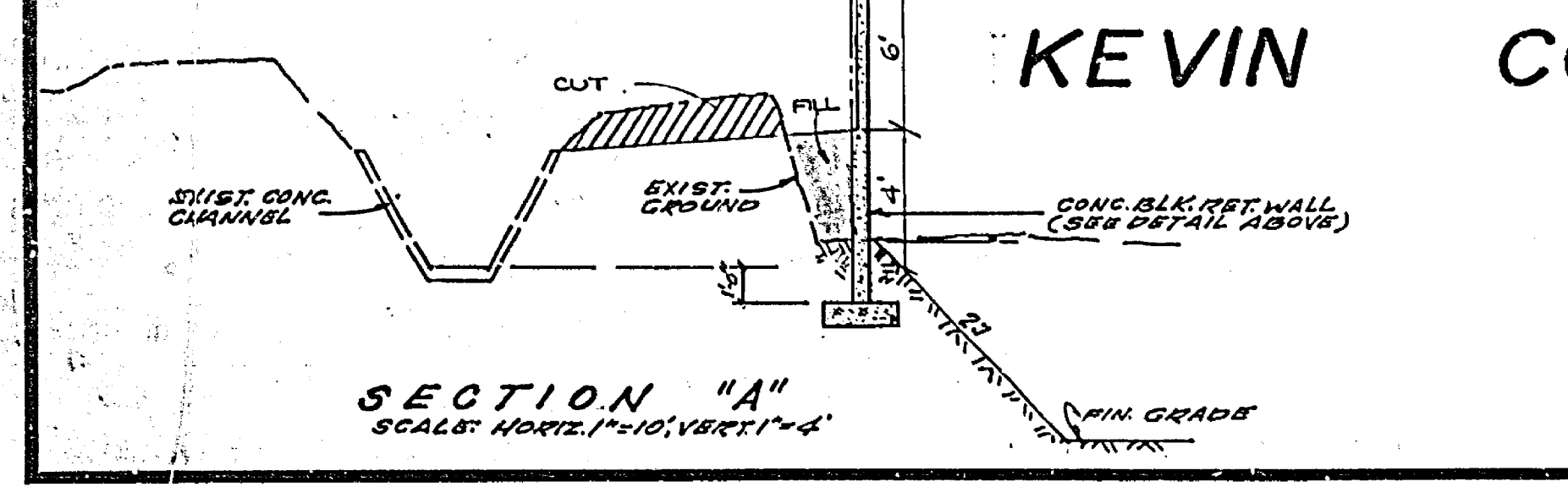
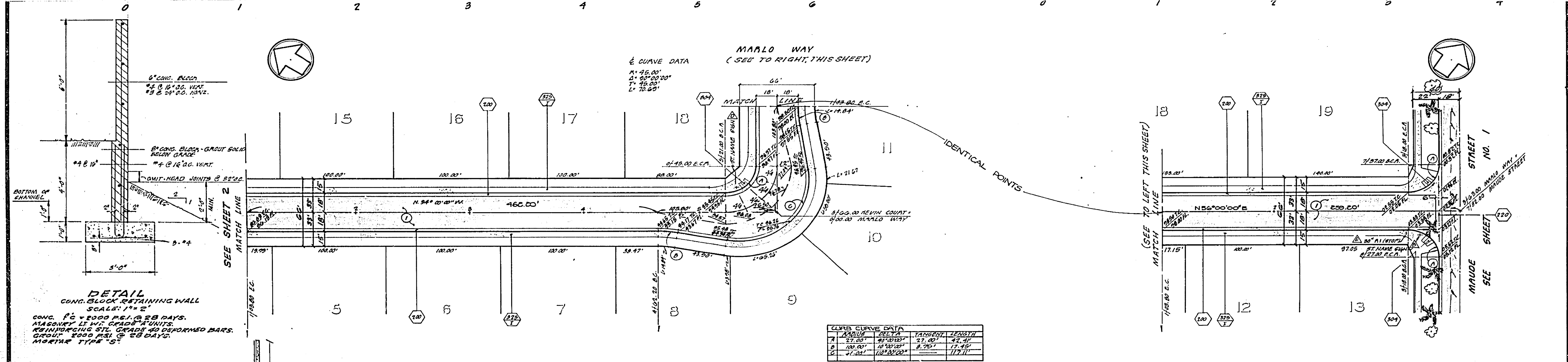
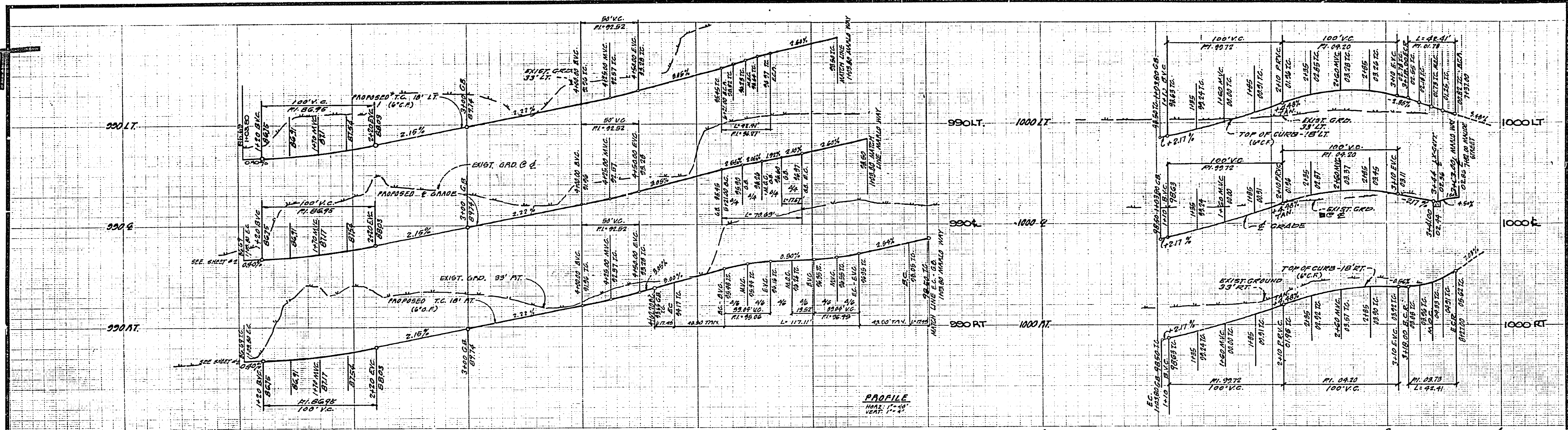


VICTORIA AVENUE

LORRAINE DRIVE

HEVIN COURT
SEE SHEET NO. 3

<p>GAGE CANAL APPROVED BY: <i>[Signature]</i> DATE: 5/11/77 PLANNING DEPARTMENT APPROVED BY: <i>[Signature]</i> DATE: 5-11-77</p>	<p>HAWKINS, ROBERTSON & ASSOCIATES ENGINEERS - SURVEYORS DATE: <i>5/11/77</i> <i>Charles E. Robertson</i> A.E. 15010 BENCH MARK: F&A FOUND BY AS DMC SKIPPED (70-A) CAPED AT INTERSECTION OF VICTORIA AVE. & WASHINGTON STREET FB 785-3 ELEV 921.999</p>	<p>CITY OF RIVERSIDE, CALIFORNIA DEPARTMENT OF PUBLIC WORKS APPROVED BY: <i>[Signature]</i> OFFICE ENGINEER: <i>[Signature]</i> DATE: 4/27/77</p>	<p>TRACT NO. 8327 STREET PLAN AND PROFILE VICTORIA AVENUE LORRAINE DRIVE PROJECT NO. R-1964 SHEET 2 OF 3 FILE NO. 76-2650/</p>
---	--	---	--



GAGE CANAL APPROVED BY: <i>[Signature]</i> DATE: 5/14/77 PLANNING DEPARTMENT APPROVED BY: <i>[Signature]</i> DATE: 5-17-77	HAWKINS, ROBERTSON & ASSOCIATES ENGINEERS - SURVEYORS 11-1-76 DATE: <i>Charles S. Robertson</i> A.C.E. 15010 BENCH MARK: 16-A FOUND BASS DIG STAMPED (16-A) CAPED AT INTERSECTION OF VICTORIA AVE & MARLO STON STREET RA 75-3 ELEV 921.93	CITY OF RIVERSIDE, CALIFORNIA DEPARTMENT OF PUBLIC WORKS APPROVED BY: <i>[Signature]</i> OFFICE ENGINEER PARK DEPARTMENT TRAFFIC DIVISION ASSISTANT CITY ENG. DATE: 4-21-77	TRACT NO. 8327 STREET PLAN AND PROFILE KEVIN COURT MARLO WAY PROJECT NO. R-1964 SHEET 3 OF 3 FILE NO. 76-2660
---	---	--	--