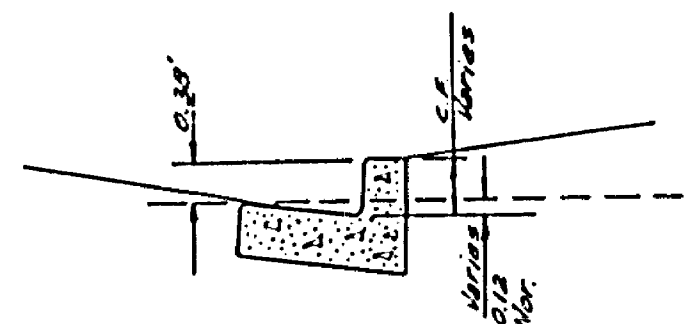
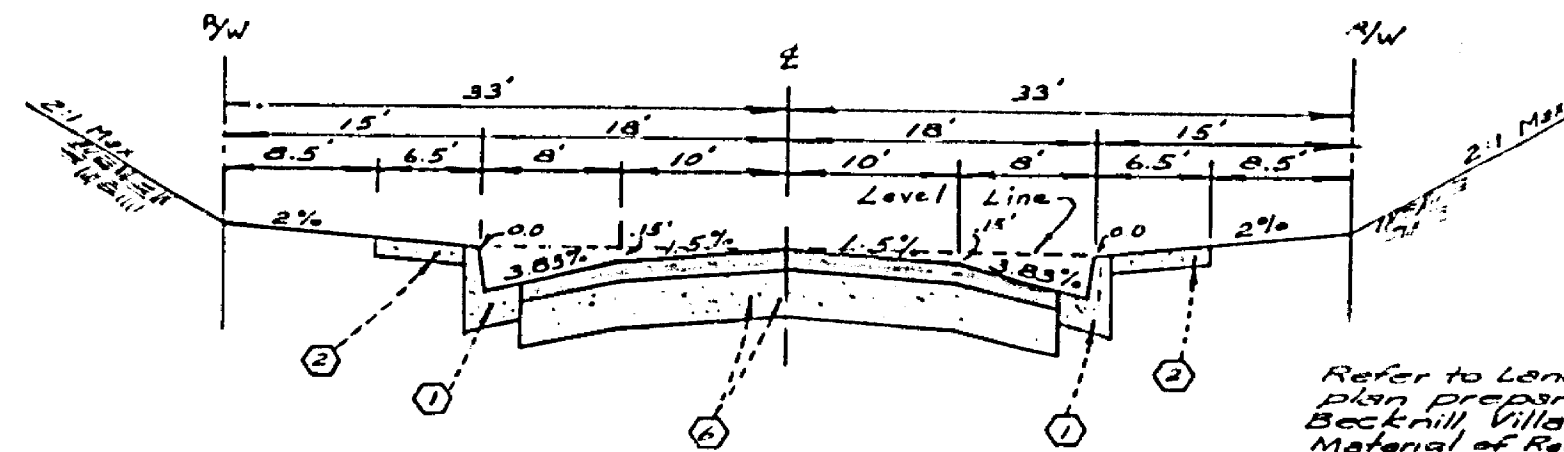


LOCATION MAP
No Scale

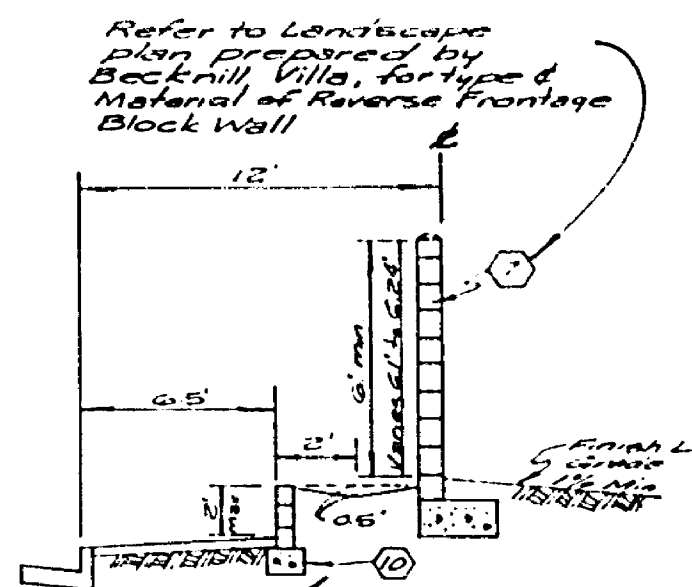


MODIFIED CURB DETAIL
No Scale



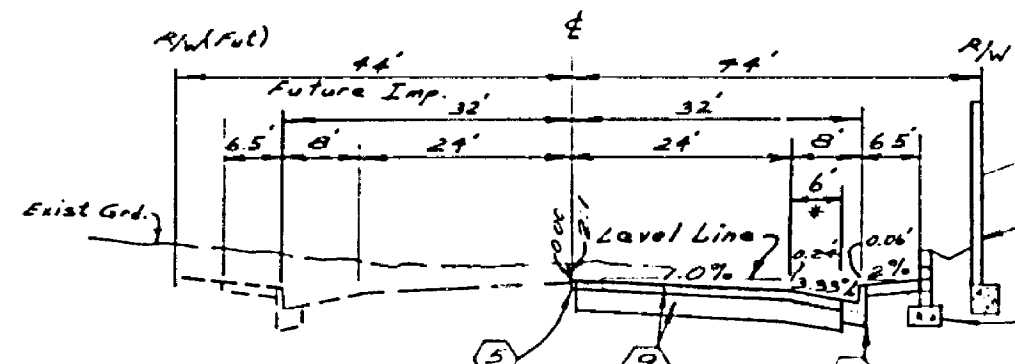
TYPICAL SECTION

REDSTAR CT
VICKSBURG CT
STONEWALL DR
No Scale
T.I. = 5



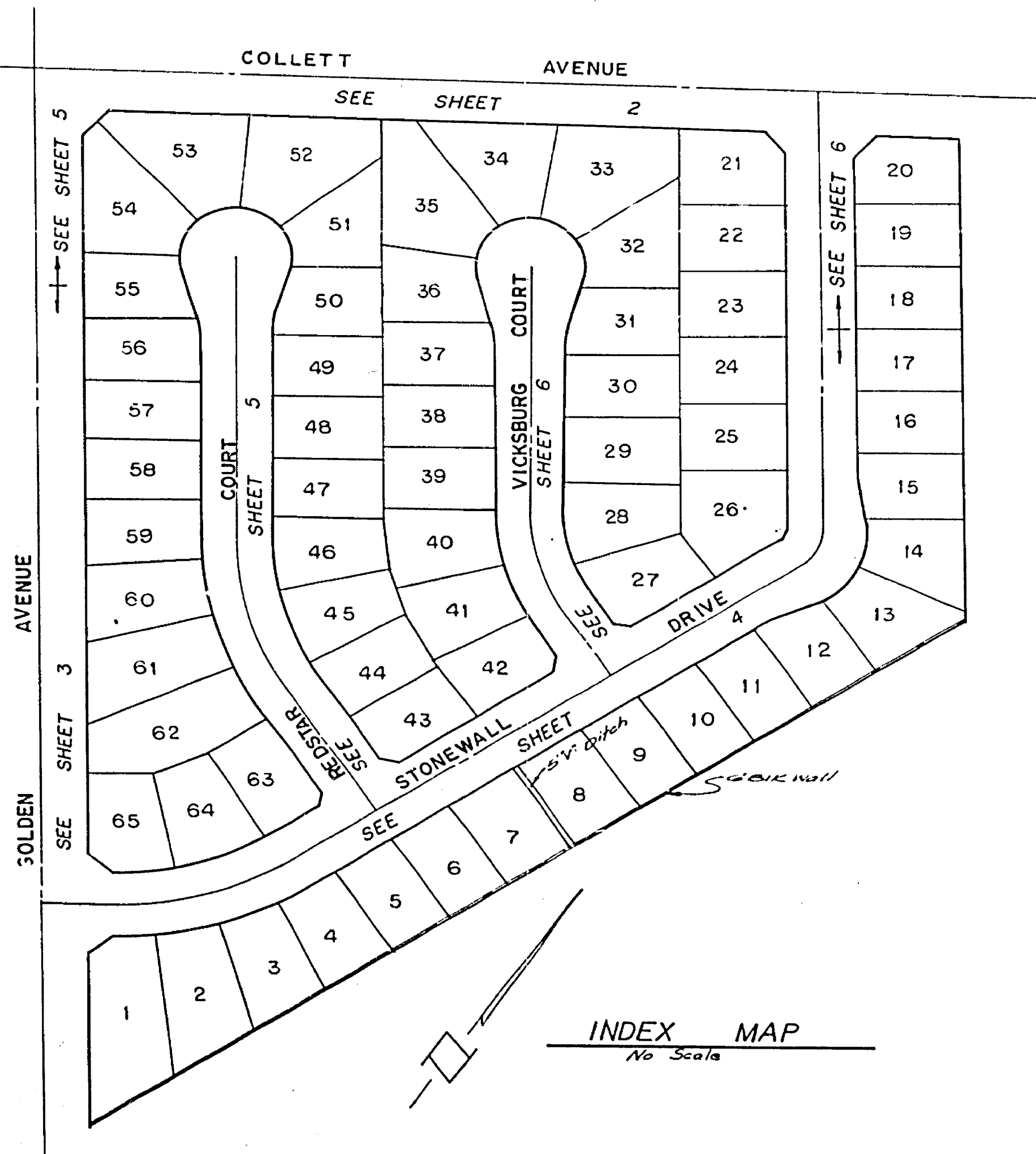
WALL DETAIL

STA. 43+24.51
to
46+85.20
COLLETT



TYPICAL SECTION

▲ GOLDEN AVE
COLLETT AVE
No Scale
T.I. = 7
* Paving and base by City,
grading by Contractor



INDEX MAP
No Scale

GENERAL NOTES:

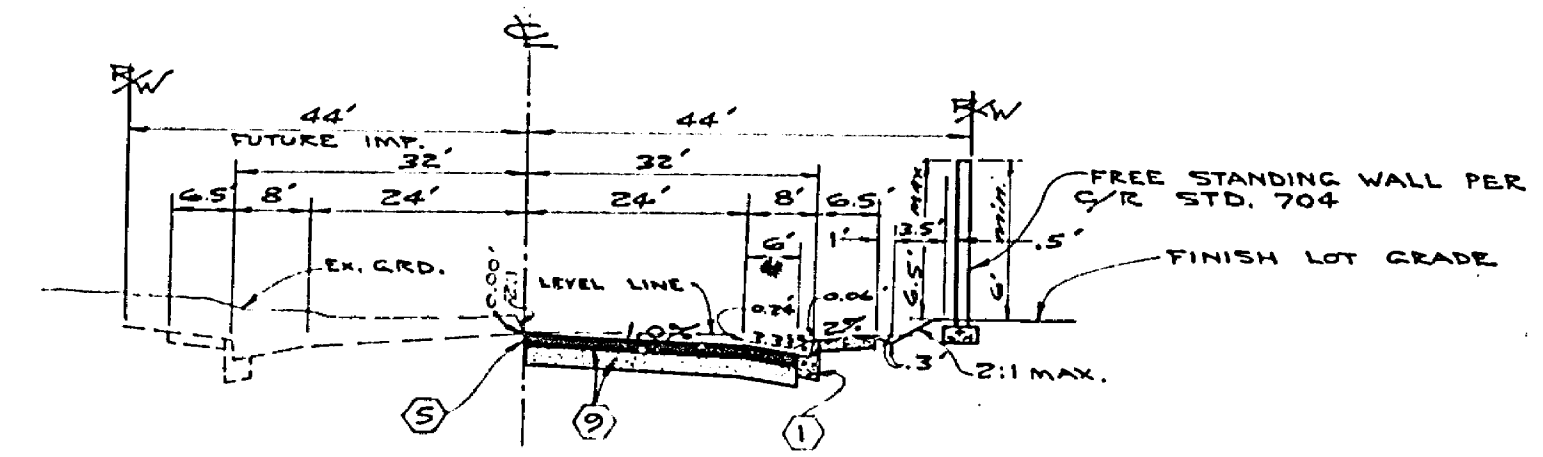
- The Private Engineer signing these Plans is responsible for the accuracy and acceptability of the work herein. In the event of discrepancies arising during construction, the private engineer shall be responsible for determining an acceptable solution and revising the Plans for approval by the City.
- Construction shall be in accordance with the Standard Specifications for Public Works Construction, 1974 Edition, and per City of Riverside Standard Drawings.
- All flagged elevations shall be staked in the field by the Private Engineer.
- The Subdivider shall arrange for soil test to be made by a soils engineer after the streets have been prepared to rough grade. Depth of base material and AC paving shall be determined by the City of Riverside Design Standards and Test Procedures.
- Location and sign of driveway approaches (S.A.T. 302) to be determined at time of construction, as specified by the Traffic Engineer.
- Traffic control signs must be in place prior to opening streets to traffic.
- It shall be the responsibility of the contractor to clear the right of way in accordance with the provisions of law as it affects each utility including irrigation lines and appurtenances and of no cost to the City.
- See "Street Lighting Plan" for quantity and location of required street lights.
- Curb shall be spaced of 25' intervals and 3' offset where grades are 0.1% or greater. Curb having grades of less than 0.1% will be spaced at 12.5' intervals and 3' offset. In addition on curb grades of less than 0.1%, two rows of 3 reinforcing bars will be placed in the gutter and 3/4" solid steel dowels will be required at all expansion joints.
- Top edge of existing pavement where new pavement joins to a smooth straight line. Construct match up paving as shown on plans to produce a smooth section.
- Developer shall give R.C.E.C.D. 5 days written notice prior to beginning Storm Drain Construction.
- 4'x4' blockouts for mailboxes required in curb sidewalks.
- See Landscaping and Sprinkler System plan for parkway on Golden Ave. and Collett Ave.
- The Developer is to coordinate the installation of access paving on Golden and Collett with the City Construction Inspector.

CONSTRUCTION NOTES

- Construct A.C. curb and gutter per Riverside City Standard No. 200 (A.C.).
- Construct 6" P.C.C. Curb Sidewalk per Riverside City Standard No. 385
- Construct 6" P.C.C. cross gutter per Riverside City Standard 220.
- Construct wheelchair ramps per Riverside City Standard 304.
- Construct 2'x4" Redwood Header.
- Construct 2 1/2" 10' Pavement over 10' DG.
- Construct 6' High Block Wall per Riverside City Standard No. 704
- Construct Barricade per Riverside City Std No. 180
- Construct 2" A.C. Pavement over 14' DG.
- Construct Retaining Wall per Riverside City Standard No. 702 (N+Series 14.5')

BENCH MARK

R.R. spike in P.P. #245993 @ S.E. corner La Sierra Avenue and Collett Avenue. C.I.A. N.B. 37075
Elev. 704.25



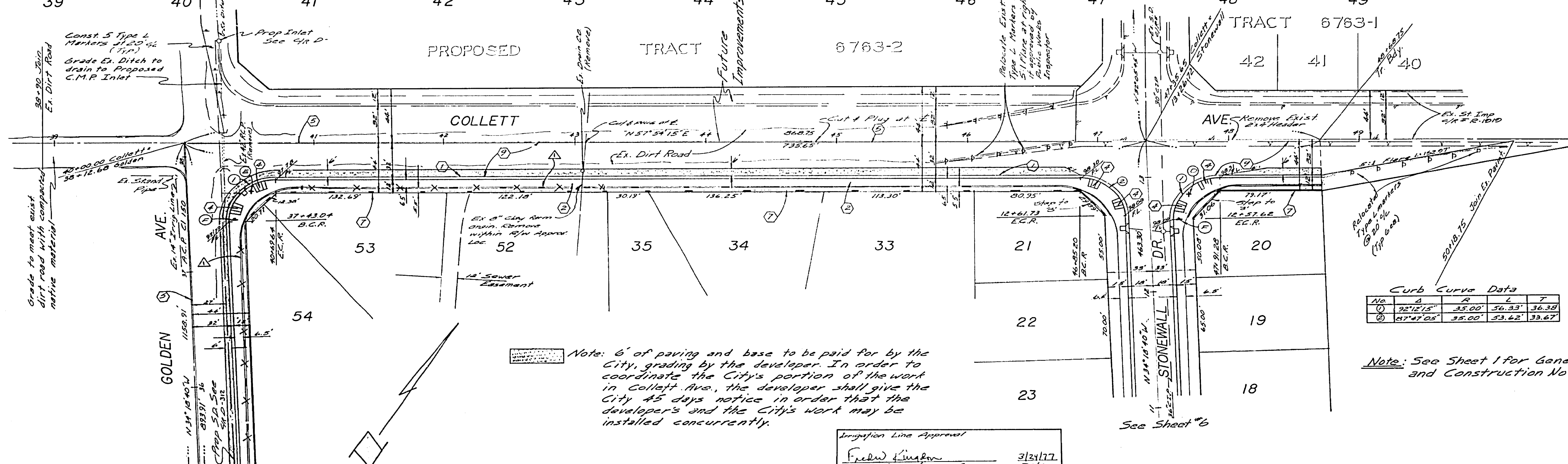
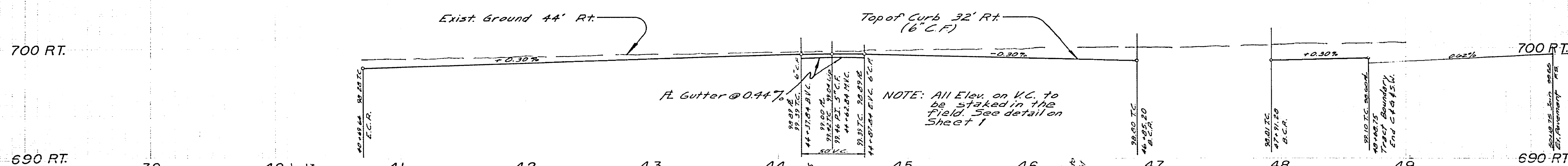
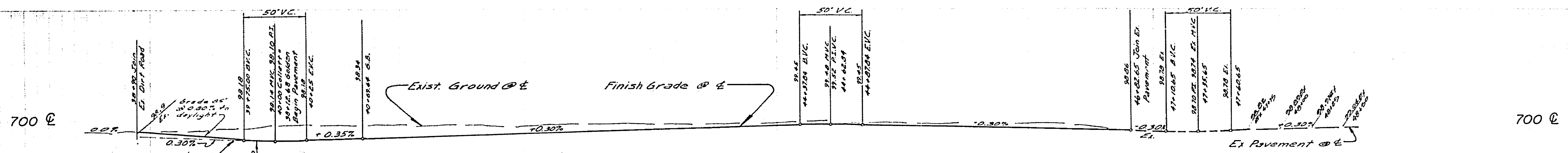
TYPICAL SECTION

▲ GOLDEN AVENUE
COLLETT AVENUE
STA. 40+69.64 to 43+24.51
to 47+91.28 to 48+70.45
T.I. = 7
* PAVING AND BASE BY CITY,
GRADING BY CONTRACTOR.

STREET NAME AND TRAFFIC SIGN SCHEDULE

①	GOLDEN AVE	4200
②	STONEWALL DR	11200
③	REDSTAR CT	4200
④	STONEWALL DR	11200
⑤	VICKSBURG CT	4200
⑥	STONEWALL DR	11200
⑦	COLLETT AVE	11100
⑧	STONEWALL DR	11100
⑨	GOLDEN AVE	4200
⑩	COLLETT AVE	11500
⑪	2' (STOP SIGN) 30" OCTAGON	
⑫	1'55" (NOT A THROUGH STREET) 24" 54"	

ALBERT A. WEBB ASSOCIATES CIVIL ENGINEERS RIVERSIDE, CALIFORNIA		CITY OF RIVERSIDE, CALIFORNIA PUBLIC WORKS DEPARTMENT		STREET PLANS & PROFILE TRACT 6761 INDEX		ACCOUNT No. 25-135 DRAWING NUMBER 2-1968	
APPROVED BY: <i>Albert A. Webb</i> DATE: 12/7/76 R.E. No. 2876		APPROVED BY: <i>John J. ...</i> DATE: 4-2-77		PRINCIPAL ENGINEER: <i>John J. ...</i>		DIRECTOR OF PUBLIC WORKS	
DESIGNED BY: <i>RLT</i> DRAWN BY: <i>MC</i> CHECKED BY: <i>BM</i>		TRAFFIC DIVISION: <i>11/25</i>		CHIEF CIVIL ENGINEER: <i>11/25</i>		SHEET 1 OF 6	
w.0.75-135 from: <i>Pasosaltar Homes P.D. 1032</i>		DATE: 4-2-77		SCALE: As Shown		75-135-A	



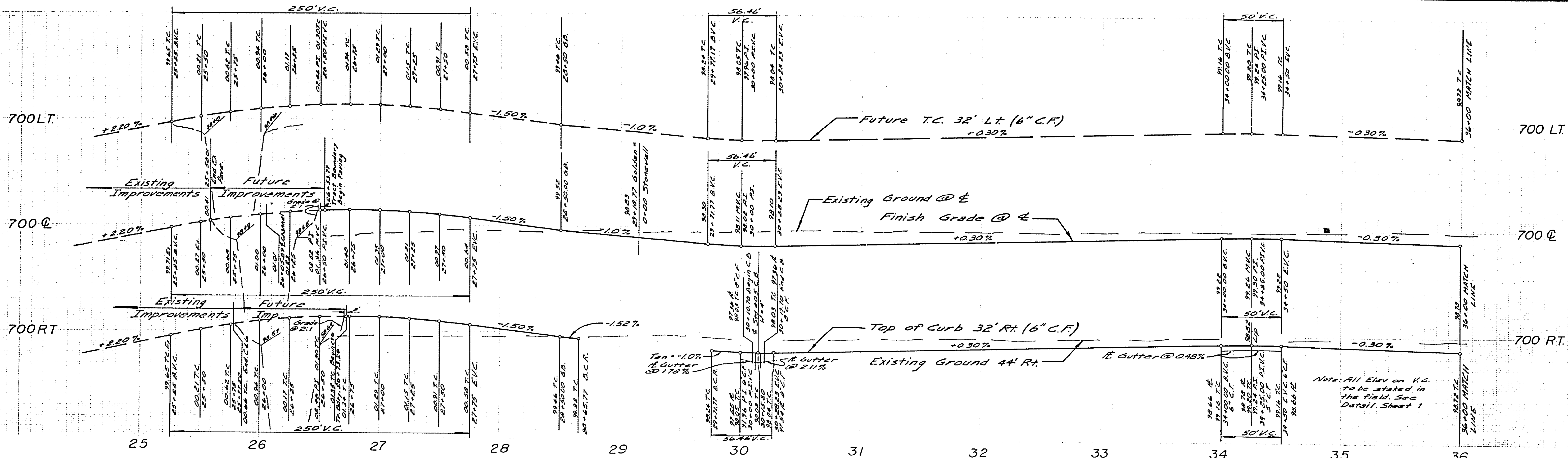
Curb Curve Data

No.	A	R	L	T
1	22.125'	33.00'	56.33'	36.38'
2	17.4725'	35.00'	53.62'	33.62'

Note: See Sheet 1 for General and Construction Notes

BENCH MARK
 R.R. spike in AP #245891
 @ SE corner La Sierra Ave
 and Collett Ave. 9/4 P.B. 92815
 Elev. 704.25

ALBERT A. WEBB ASSOCIATES CIVIL ENGINEERS RIVERSIDE, CALIFORNIA APPROVED BY: <i>P. A. Webb</i> DATE: 12/13/76 R.E. No. 22720		Irrigation Line Approval Fred W. Sumner Pacesetter Homes Inc. 3/24/77 Date	CITY OF RIVERSIDE, CALIFORNIA PUBLIC WORKS DEPARTMENT APPROVED BY: <i>[Signature]</i> DATE: 4-16-77 DIRECTOR OF PUBLIC WORKS	STREET PLAN & PROFILE TRACT 6761 COLLETT AVENUE SCALE: Horiz. 1"=40' Vert. 1"=4' ACCOUNT No. 75-135 DRAWING NUMBER 12-1068 SHEET 2 OF 6 75-135-A
--	--	---	---	---

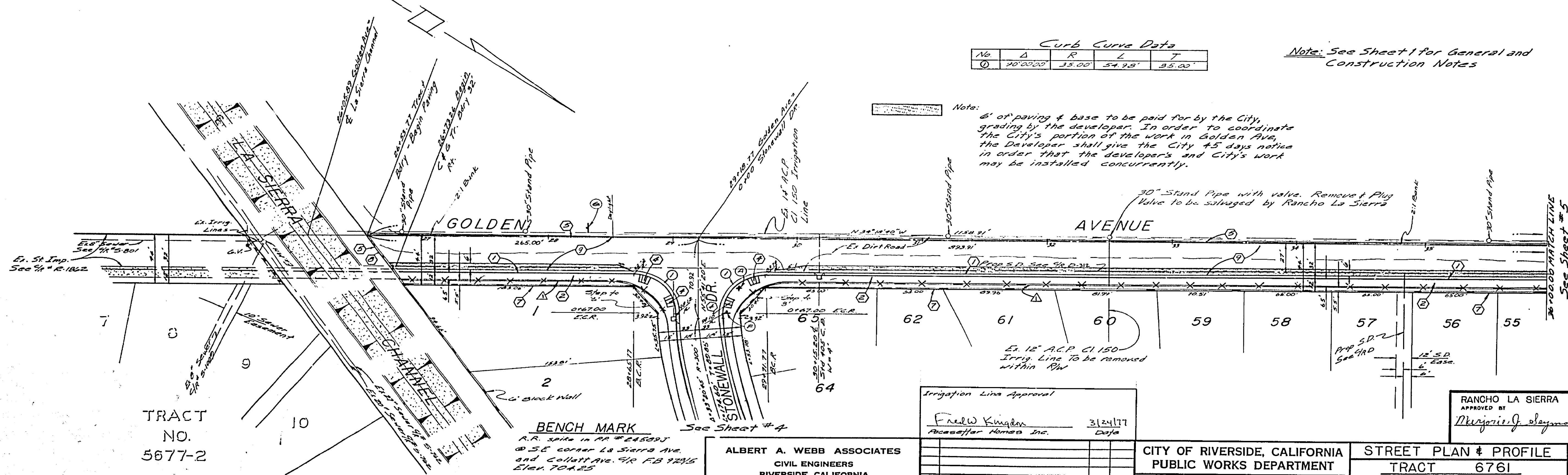


Curb Curve Data

No.	Δ	R	L	T
①	30°00'00"	33.00'	54.25'	35.00'

Note: See Sheet 1 for General and Construction Notes

Note:
6' of paving & base to be paid for by the City, grading by the developer. In order to coordinate the City's portion of the work in Golden Ave, the Developer shall give the City 45 days notice in order that the developer's and City's work may be installed concurrently.



TRACT NO. 5677-2

BENCH MARK
A.R. spike in RR #24509J @ SE corner La Sierra Ave. and Collett Ave. 4/8 FB 12/15 Elev. 704.25

ALBERT A. WEBB ASSOCIATES
CIVIL ENGINEERS
RIVERSIDE, CALIFORNIA
APPROVED BY: *P. H. Webb* DATE: 12/5/76
R.E. No. 0272
W.O. 75-135 FOR: Pacesetter Homes P.B. 1032

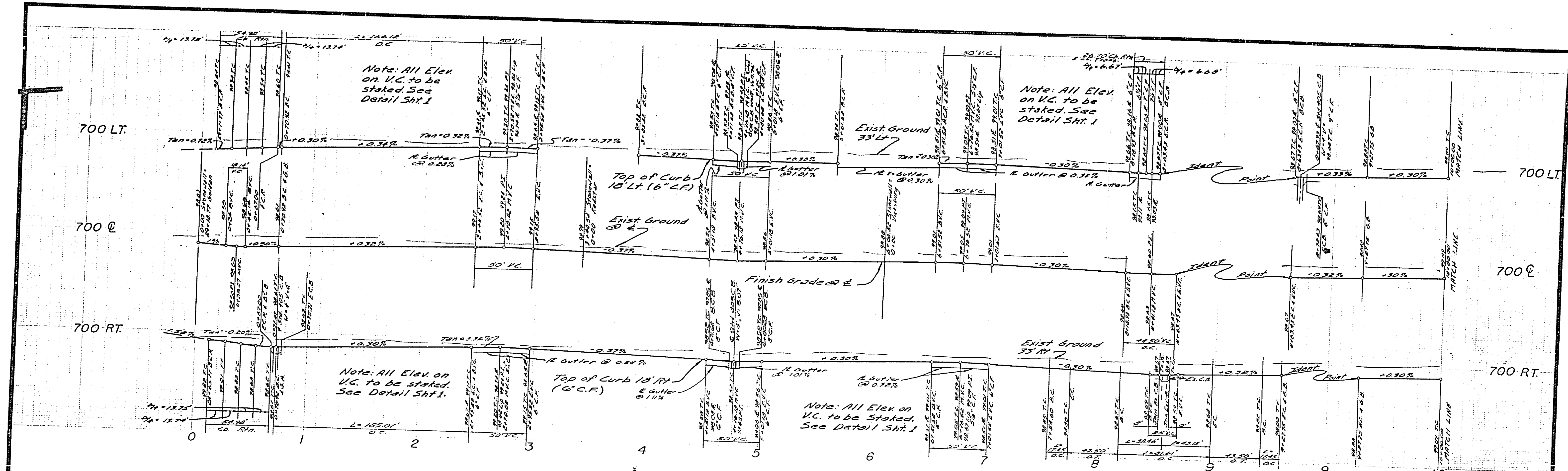
Irrigation Line Approval
Fred W. King 3/24/77
Pacesetter Homes Inc. Date

CITY OF RIVERSIDE, CALIFORNIA
PUBLIC WORKS DEPARTMENT
APPROVED BY: *[Signature]* DATE: 4-2-77
TRAFFIC DIVISION
CHIEF PUBLIC WORKS ENGINEER

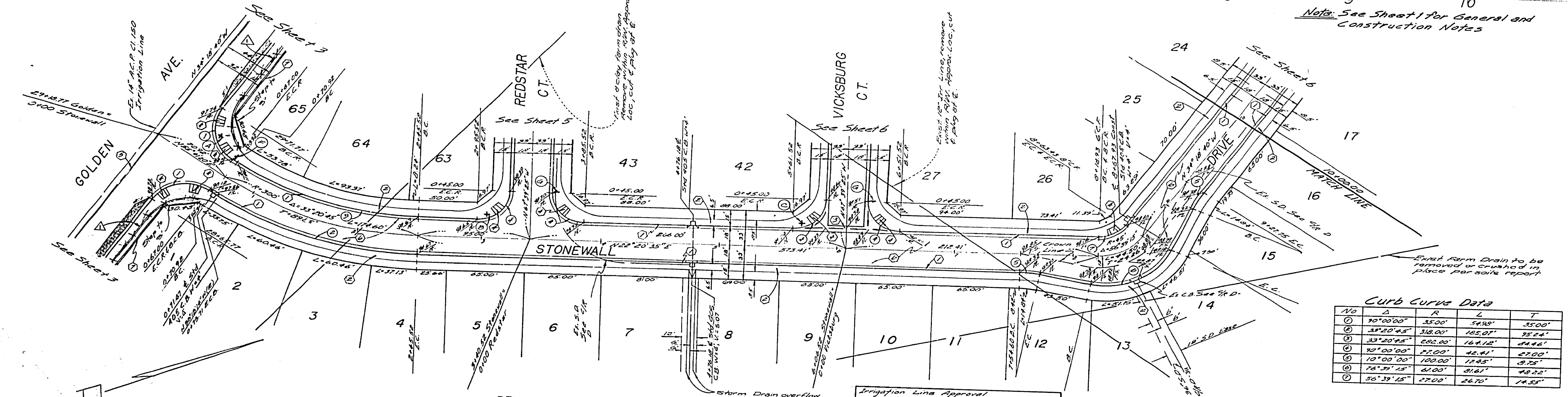
STREET PLAN & PROFILE
TRACT 6761
GOLDEN AVENUE
SCALE: Horiz. 1"=40' Vert. 1"=4'

RANCHO LA SIERRA
APPROVED BY: *[Signature]* 3-23-77
DATE

ACCOUNT NO. 25-125
DRAWING NUMBER
E-1068
SHEET 5 OF 6
75-135-A



Notes: See Sheet 1 for General and Construction Notes



Curb Curve Data

NO	Δ	R	L	T
1	90°00'00"	35.00'	54.38'	35.00'
2	33°20'45"	312.00'	185.01'	35.24'
3	33°20'45"	252.00'	161.12'	34.46'
4	10°00'00"	27.00'	42.41'	27.00'
5	10°00'00"	100.00'	17.45'	3.75'
6	74°39'15"	61.00'	31.61'	48.22'
7	56°39'15"	27.00'	24.70'	14.55'

BENCH MARK
 R.R. Spite in RR #24300 J
 @ S.E. corner La Sierra Ave.
 344 Collett Ave. SHAB 97825
 Elev. 70425

ALBERT A. WEBB ASSOCIATES
 CIVIL ENGINEERS
 RIVERSIDE, CALIFORNIA
 APPROVED BY: *[Signature]* DATE: 12/3/96
 R.E. No. 2272
 W.O. 75-135 FOR: Pacesetter Homes P.B. 1032

Irrigation Line Approval
 Fred Kingdon
 Pacesetter Homes Inc. 312917
 Date

CITY OF RIVERSIDE, CALIFORNIA
PUBLIC WORKS DEPARTMENT

STREET PLAN & PROFILE
 TRACT 6761
 STONEWALL DRIVE

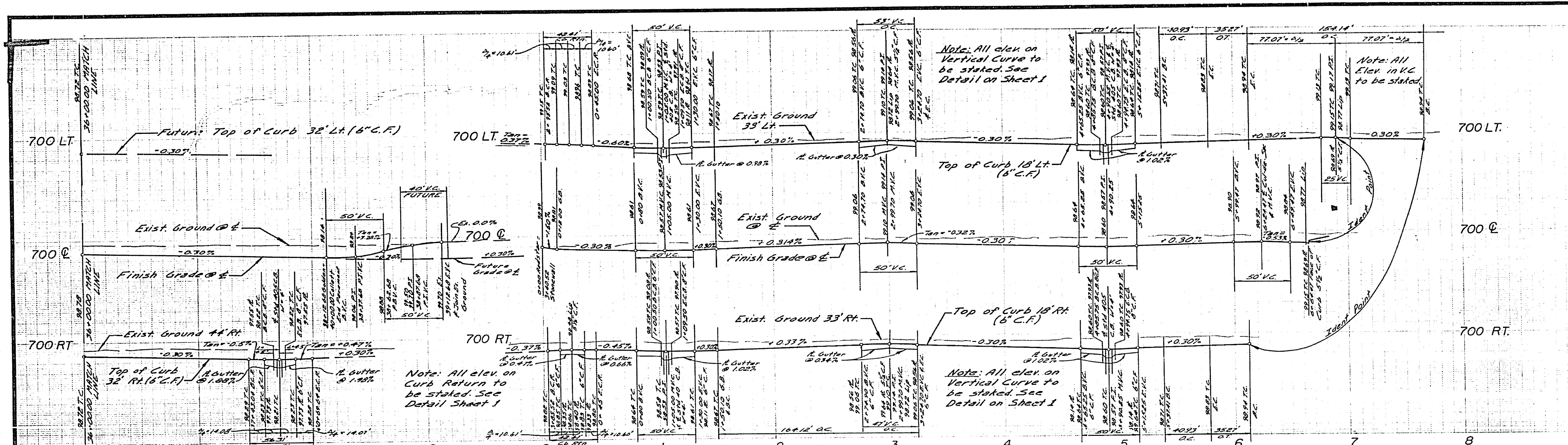
ACCOUNT No. 75-135
 DRAWING NUMBER

APPROVED BY: *[Signature]* DATE: 4-2-97
 PRINCIPAL ENGINEER
 PARK DEPARTMENT
 TRAFFIC DIVISION
 CHIEF PUB. WORKS ENGR.
 DESIGNER: *[Signature]* DRAWN BY: *[Signature]* CHECKED BY: *[Signature]*

APPROVED BY: *[Signature]* DATE: 4-2-97
 DIRECTOR OF PUBLIC WORKS

DRAWING NUMBER
6-1008
 SHEET 4 OF 6
 75-135-A

SCALE: Horiz. 1"=40' Vert. 1"=4'

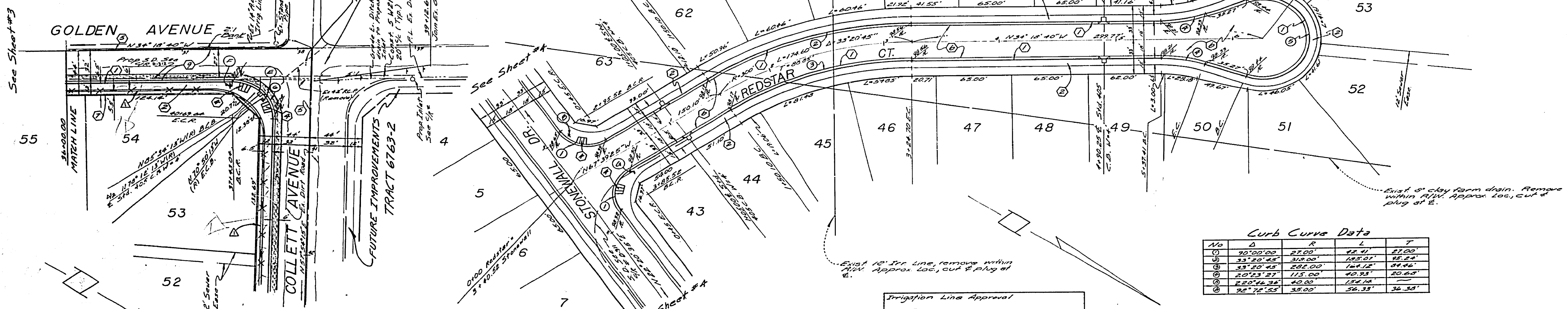


Note: Cost of paving & base to be paid for by the City, grading by the developer. In order to coordinate the City's portion of the work in Golden Ave., the Developer shall give the City 45 days notice in order that the developers and City's work may be installed concurrently.

Note: All elev. on Curb Return to be stated. See Detail Sheet 1

Note: All elev. on Vertical Curve to be stated. See Detail on Sheet 1

Note: See Sheet 1 for General and Construction Notes

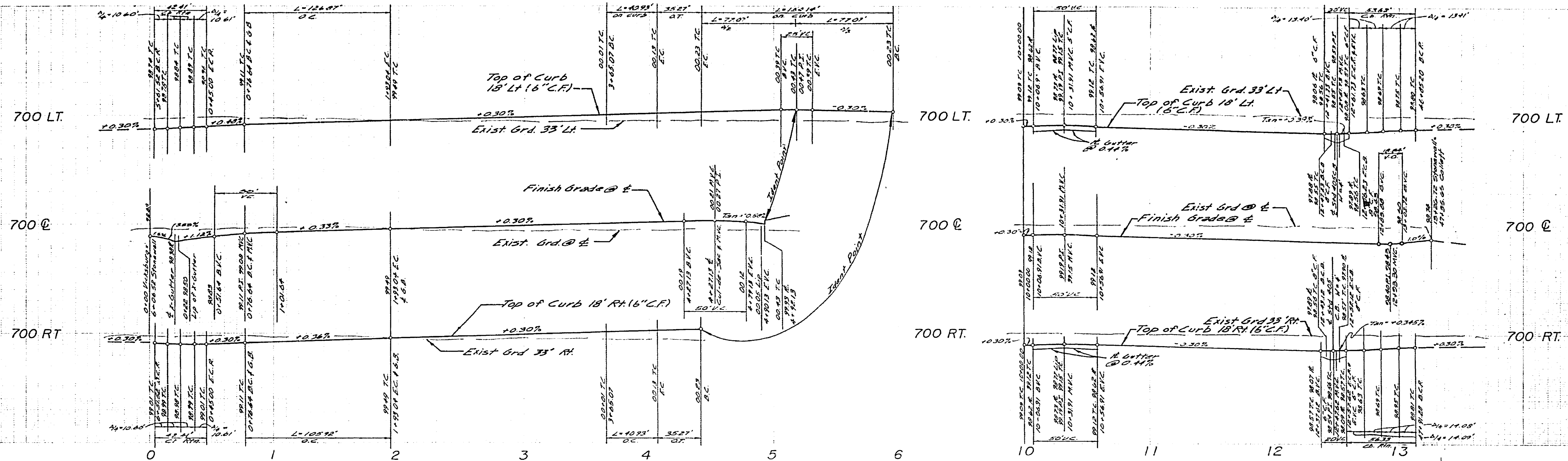


Curb Curve Data

No	Δ	R	L	T
1	30°00'00"	27.00'	22.41'	27.00'
2	33°20'45"	319.00'	123.01'	95.24'
3	33°20'45"	282.00'	124.12'	94.86'
4	20°23'27"	115.00'	40.93'	20.88'
5	22°46'22"	42.00'	15.12'	7.58'
6	24°12'50"	39.00'	16.53'	12.39'

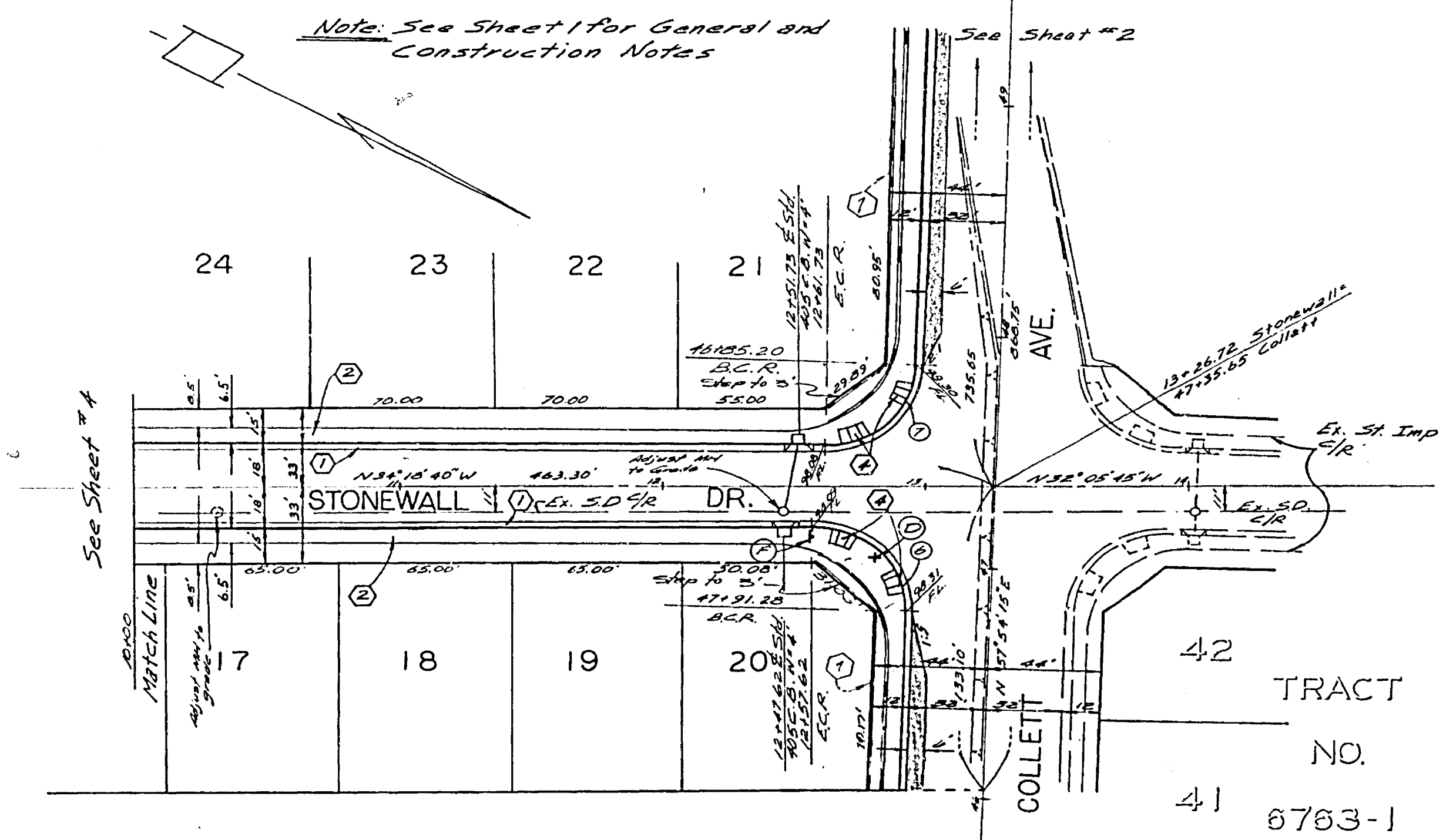
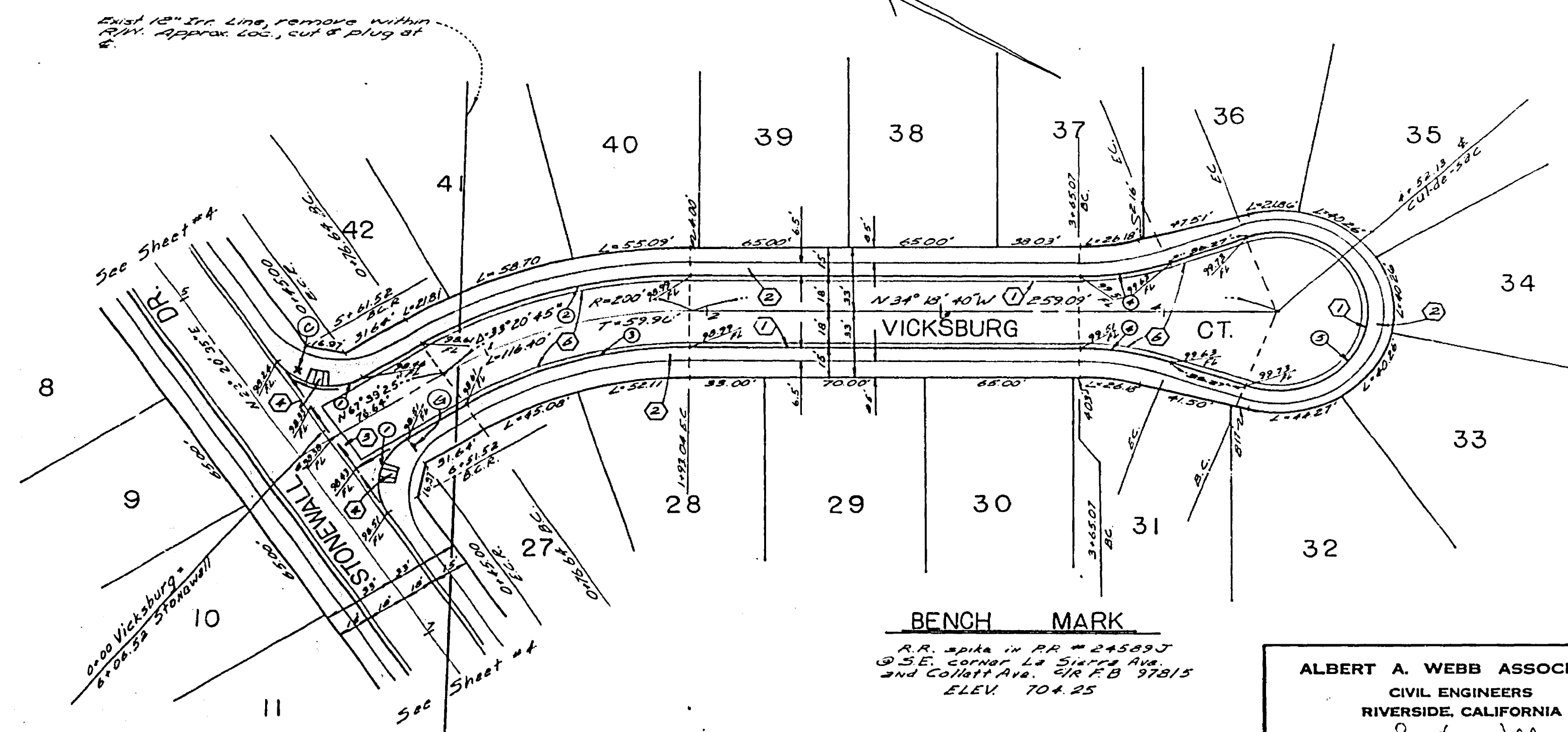
BENCH MARK
 R.R. spike in RR #2+5000
 @ S.E. corner La Sierra Ave.
 and Collett Ave.
 C/A R.B. 978/5
 ELEV. 704.25

ALBERT A. WEBB ASSOCIATES CIVIL ENGINEERS RIVERSIDE, CALIFORNIA APPROVED BY: <u>[Signature]</u> DATE: 4/2/17 R.E. No. 0000 W.D. 75-135 FOR PARCER/STAR HOMES V.A. 1032	Irrigation Line Approval <u>Fred W. King</u> 3/24/17 Paracer/Star Homes Inc. Date	CITY OF RIVERSIDE, CALIFORNIA PUBLIC WORKS DEPARTMENT APPROVED BY: <u>[Signature]</u> TRAFFIC DIVISION CHIEF PUBLIC WORKS ENGINEER DATE: 4-2-17	STREET PLAN & PROFILE TRACT 6761 REDSTAR COURT GOLDEN AVENUE SCALE: Horiz. 1"=40' Vert. 1"=4'	ACCOUNT No. 75-135 DRAWING NUMBER E. 1068 SHEET 5 OF 6 75-135-A
--	---	---	--	--



Curb Curve Data

NO	A	R	L	T
1	30' 00" 33"	27.00'	22.41'	27.00'
2	33' 20" 42"	210.00'	125.87'	62.29'
3	33' 20" 42"	182.00'	105.92'	52.51'
4	20' 23" 27"	115.00'	20.93'	20.68'
5	22' 46" 54"	40.00'	22.18'	22.18'
6	22' 12" 55"	35.00'	24.33'	24.33'
7	27' 47" 05"	35.00'	23.62'	23.62'



BENCH MARK
 R.R. 201A IN RR # 245293
 @ S.E. CORNER LA SUTTER AVE
 and COLLETT AVE. S.R.F.B. 97815
 ELEV. 704.25

Irrigation Line Approval Fred Kingdon Ancestral Homes Inc.		5/24/77 Date	
ALBERT A. WEBB ASSOCIATES CIVIL ENGINEERS RIVERSIDE, CALIFORNIA			
APPROVED BY: <i>[Signature]</i> DATE: 12/1/76 R.E. No. 2022			
W.O.P. 35 FOR Ancestral Homes P.B. 1022			
DESIGNED BY: R.L.T. DRAWN BY: M.C.		CHECKED BY: S.M.	
CITY OF RIVERSIDE, CALIFORNIA PUBLIC WORKS DEPARTMENT			
APPROVED BY: <i>[Signature]</i> PRINCIPAL ENGINEER	BY: <i>[Signature]</i> PARK DEPARTMENT	APPROVED BY: <i>[Signature]</i> CHIEF PUBLIC WORKS ENGINEER	DATE: 4-10-77
TRACT 6761 VICKSBURG COURT STONEWALL DRIVE			
SCALE: HORZ. 1"=40' VERT. 1"=4'			
ACCOUNT NO. 75-135 DRAWING NUMBER		R-1068 SHEET 6 OF 6	