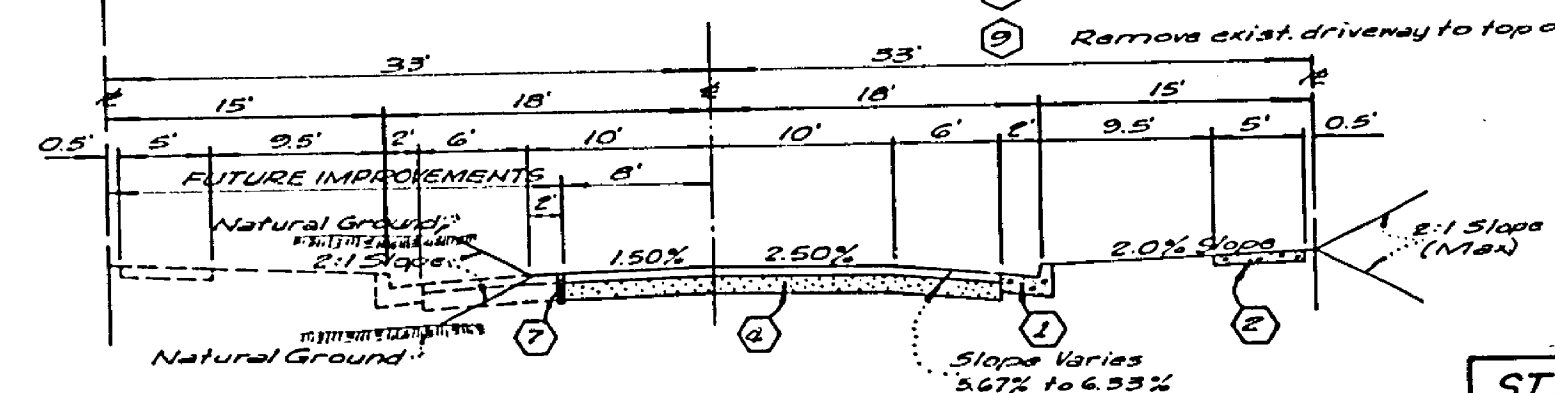


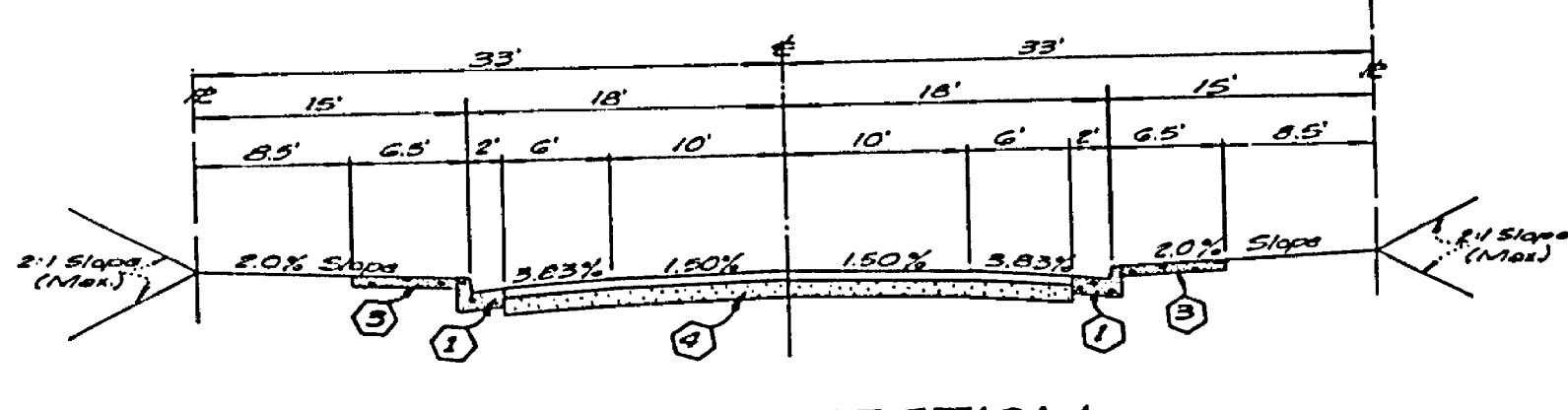
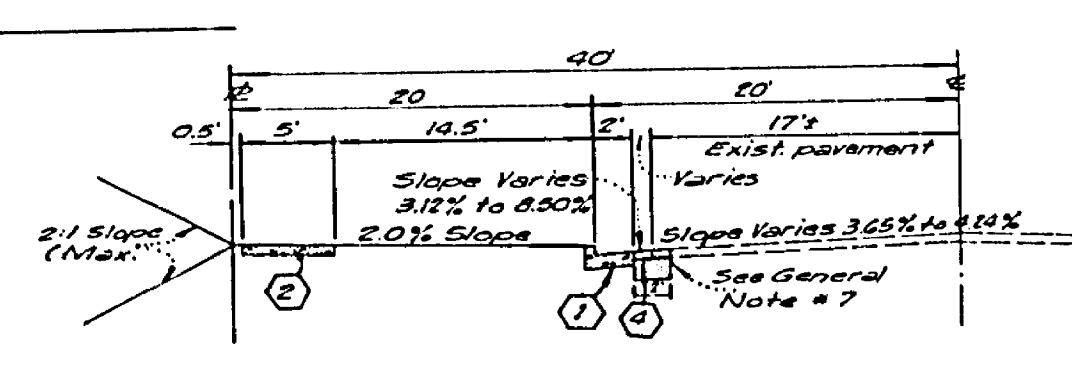
- GENERAL NOTES:**
1. Construction shall be in accordance with the Standard Specifications for Public Works Construction 1973 Edition and per City of Riverside Standard Drawings.
  2. All flagged elevations shall be staked in the field by the Engineer.
  3. The subdivider shall arrange for a Soil test to be made by a Soil Engineer after the streets have been prepared to rough grade. Depth of base material and A.C. pavement shall be determined by the City of Riverside Design Standards and Test procedures.
  4. Location and size of driveway approaches (Std. 302) to be determined at the time of construction as approved by the Traffic Engineer.
  5. Curb and Gutter to be staked on 3' offset at 25' intervals.
  6. Traffic Control Signs must be in place prior to opening streets to traffic.
  7. Trim edge of existing pavement where new pavement joins, to a smooth straight line. Construct match up paving as shown on the plans and overlay paving as directed in the field to produce a smooth surface.
  8. See Electrical Plan prepared by the City of Riverside Public Utilities Department for number and location of required street lights.
  9. It shall be the responsibility of the Contractor to clear the right of way in accordance with the provisions of law as it affects each utility including irrigation lines and appurtenances, and at no cost to the City.
  10. The Contractor shall contact the Public Service Department (787-7252) to pick up any existing Std. 180 Barricades that are being removed.
  11. 4'-4" Blockouts for mailboxes required in Curb Sidewalk.
  12. The private engineer signing these plans is responsible for the accuracy and acceptability of the work he does. In the event of discrepancies arising during construction, the private engineer signing these plans shall be responsible for determining an acceptable solution and revising the plans for approval by the City.

- CONSTRUCTION NOTES:**
1. Construct Standard 300 Curb and Gutter - G.C.F. as noted in profile.
  2. Construct Standard 325 Property Line Sidewalk.
  3. Construct Standard 325 Curb Line Sidewalk.
  4. Construct 2" A.C. Paving over 10" D.G. or 7" A.C. Paving over compacted native. JEFFERSON ST. ONLY: CONST. 3" A.C. OVER 12" D.G. OR 9" A.C. OVER COMPACTED NATIVE.
  5. Construct Standard 304 Wheelchair Ramp.
  6. Remove existing Barricade and Header as shown on plans. See General Note No. 10 above.
  7. Install 2"x4" Redwood Header.
  8. Remove exist. curb, gutter & pavement and replace as shown on Sheet No. 3, and per Typical Section
  9. Remove exist. driveway to top of pan and Const. new driveway opening per Standard No. 302.



**STREET NAME SIGN SCHEDULE**

① VIA SAN JOSE	4000
② VIA SAN LUIS	4000



S.R. 930  
R-10

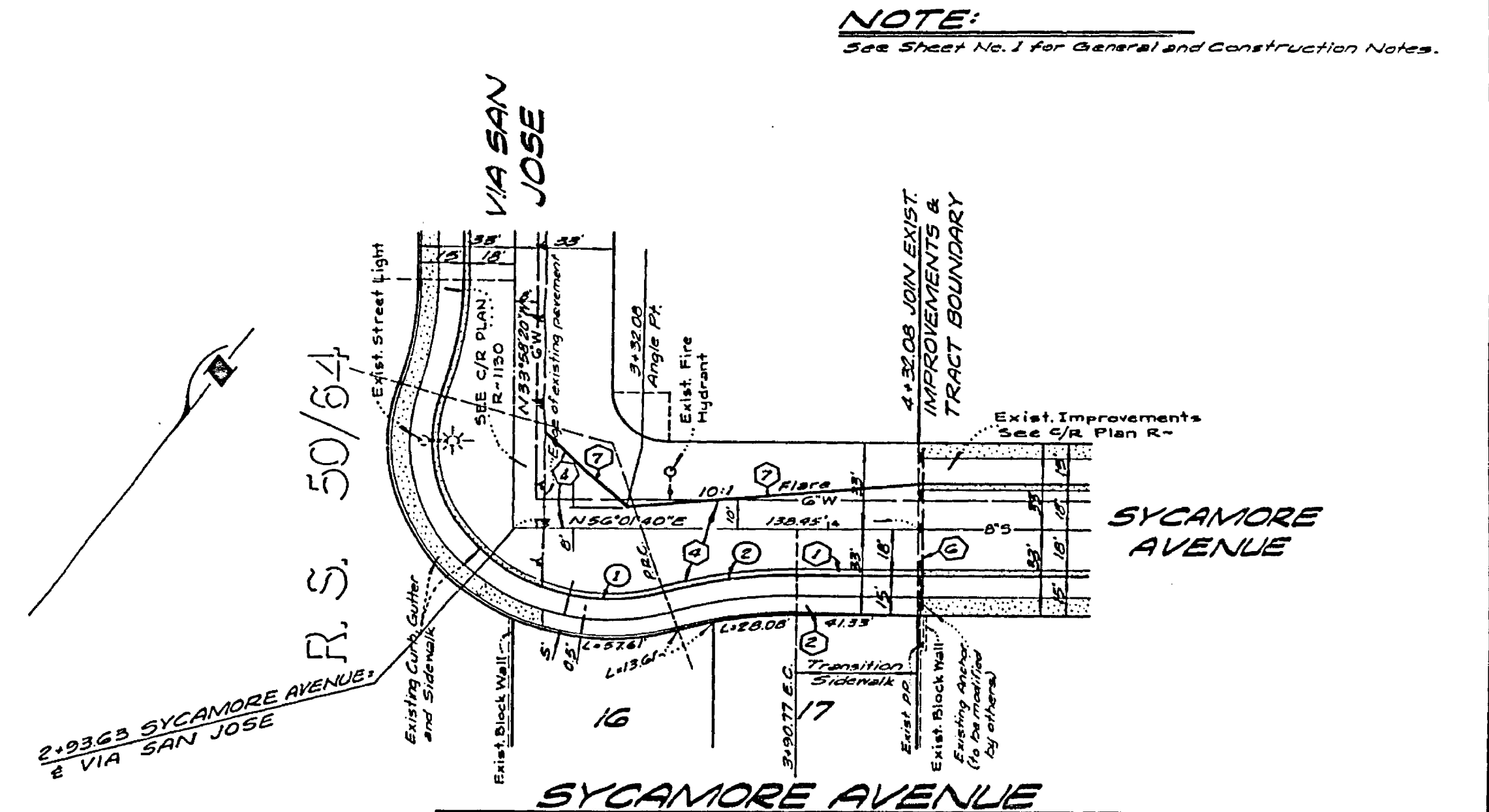
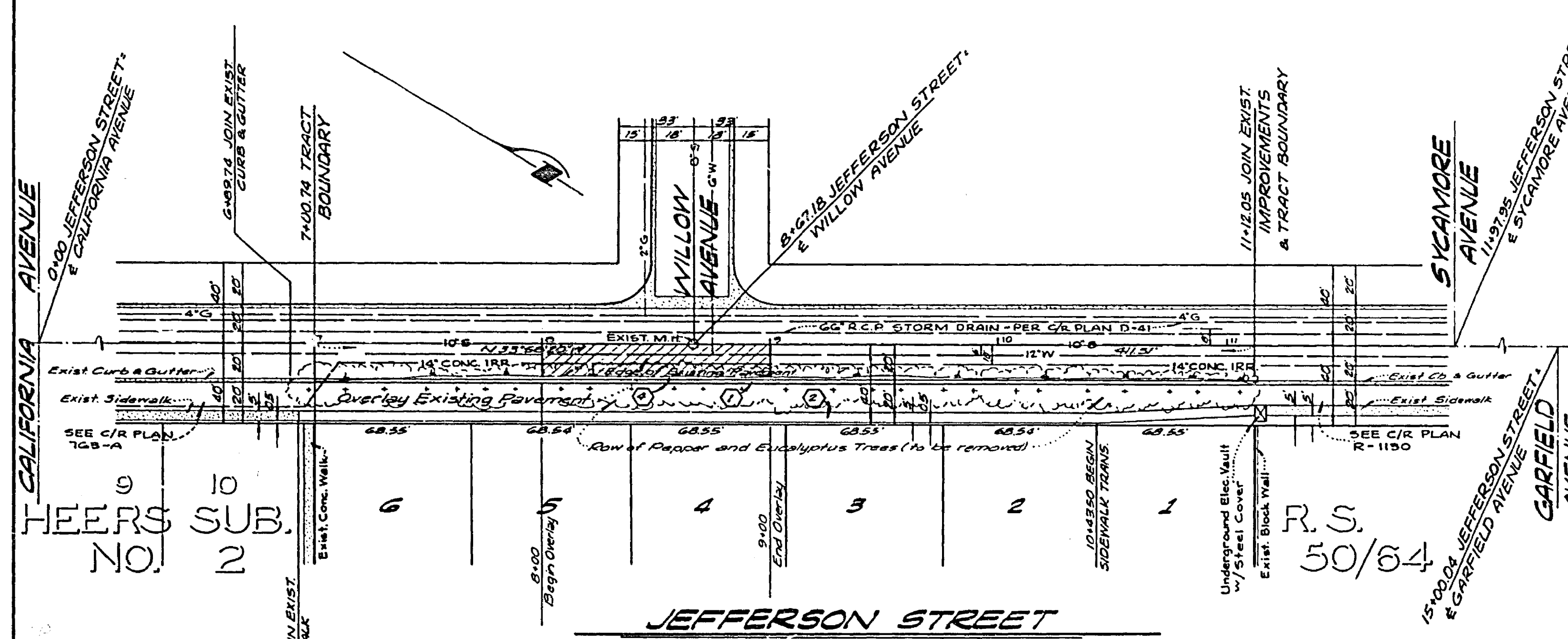
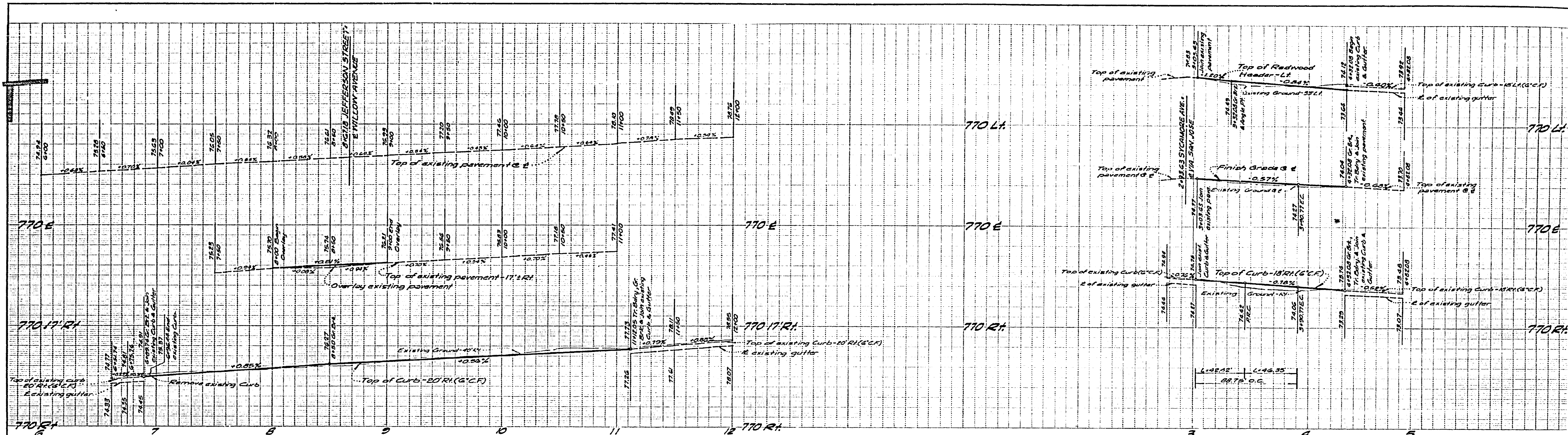
**BENCH MARK:**  
0.5'-6" P.K. Nail and Tag 3" NW 1/4 of E.C.R. @ Northw. Corner of Magnolia Avenue and Jefferson Street. C.R.S. 789/71  
Elevation 722.838

**KICAK WAINSCOTT & ASSOCIATES**  
CIVIL ENGINEERS  
GRAND TERRACE, CALIFORNIA  
APPROVED BY: *L.A. Waincott* DATE: 4-7-77  
R.C.E. 16022

DESIGNED BY: P.H.	DRAWN BY: P.H.	CHECKED BY: BOM
DATE: 4-6-77	DATE: 4-6-77	DATE: 4-6-77

**CITY OF RIVERSIDE, CALIFORNIA**  
DEPARTMENT OF PUBLIC WORKS  
APPROVED BY: *[Signature]* DATE: 4-6-77  
OFFICE ENGINEER  
TRAFFIC DIVISION  
ASSISTANT CITY ENGINEER

**STREET PLAN AND PROFILE**  
TRACT NO. 8871  
INDEX SHEET  
PROJECT NO. R-1973  
SHEET 1 OF 3  
SCALE: AS SHOWN  
FILE NO. 004-03-A



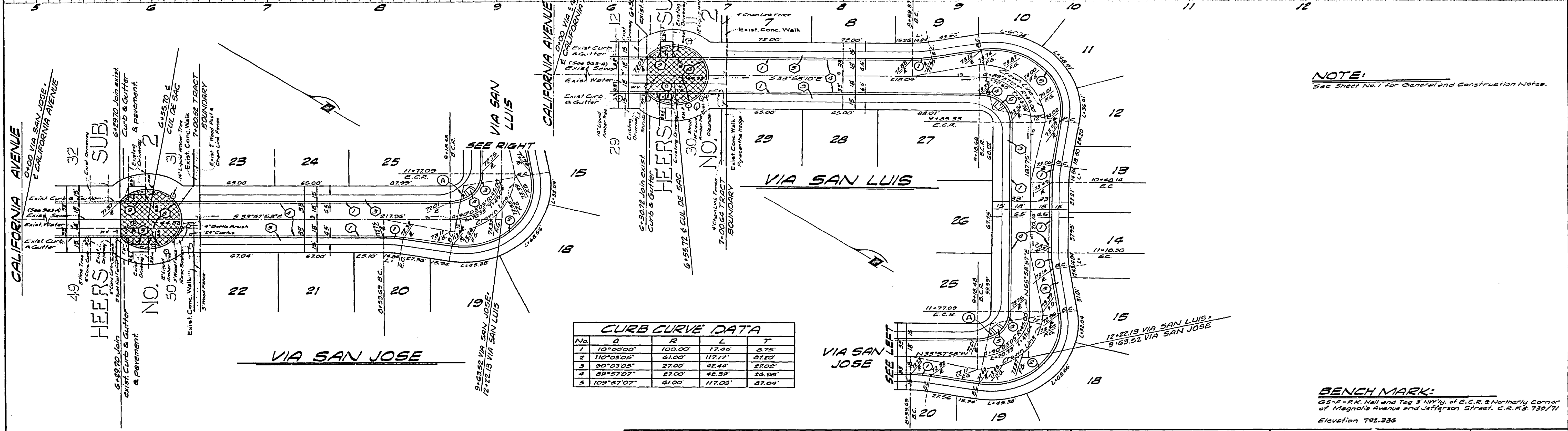
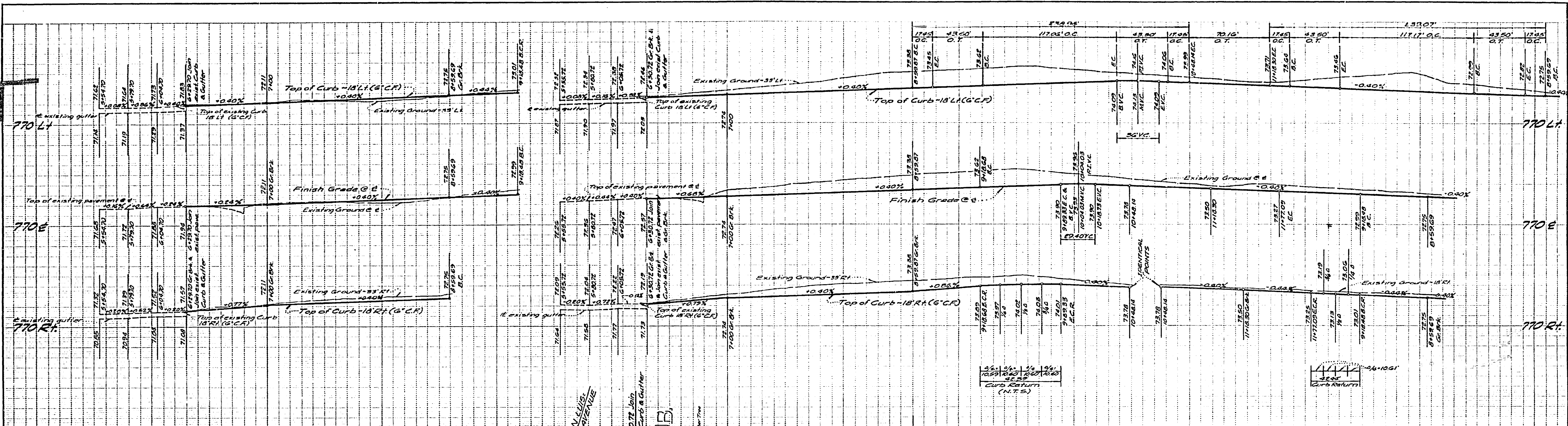
**NOTE:**  
See Sheet No. 1 for General and Construction Notes.

**CURB CURVE DATA**

No	Δ	R	L	T
1	39°50'45"	61.00'	42.42'	22.11'
2	17°41'42"	150.00'	44.55'	23.35'

**BENCH MARK:**  
GS-F-R.K. Nail and Tag 3' NW 1/4 of E.C.R. 8 Northwly Corner of Magnolia Avenue and Jefferson Street, C.R.P. 759/71.  
Elevation 792.350

<b>KICAK WAINSCOTT &amp; ASSOCIATES</b> CIVIL ENGINEERS GRAND TERRACE, CALIFORNIA APPROVED BY <i>L.D. Waincott</i> DATE 1-4-77 R.C.E. 16056	MARK REVISIONS APPR. DATE DESIGNED BY <i>P.H.</i> DRAWN BY <i>P.H.</i> CHECKED BY <i>804</i>	CITY OF RIVERSIDE, CALIFORNIA DEPARTMENT OF PUBLIC WORKS	<b>STREET PLAN AND PROFILE</b> <b>TRACT NO. 8371</b> <b>JEFFERSON STREET</b> <b>SYCAMORE AVENUE</b>	PROJECT NO. <b>R-1973</b> SHEET <b>2</b> OF <b>3</b> FILE NO. <b>006-081-A</b>
		APPROVED BY <i>[Signature]</i> DATE 1-24-77 TRAFFIC DIVISION ASSISTANT CITY ENG.	APPROVED BY <i>[Signature]</i> DATE 1-24-77 DIRECTOR OF PUBLIC WORKS	SCALE: HORIZ. 1"=40' VERT. 1"=4'



**NOTE:**  
See Sheet No. 1 for General and Construction Notes.

**BENCH MARK:**  
65-F-R-K Nail and Tag 3 NW 1/4 of E.C.R. & Northernly Corner of Magnolia Avenue and Jefferson Street, C.R.S. 739/71  
Elevation 792.336

**KICAK WAINSCOTT & ASSOCIATES**  
CIVIL ENGINEERS  
GRAND TERRACE, CALIFORNIA  
APPROVED BY *L.A. Waincott* DATE 1-7-77  
R.C.E. 16056  
W.O.004-03 FOR MORGAN DEVELOPMENT CO. F.B.

CITY OF RIVERSIDE, CALIFORNIA  
DEPARTMENT OF PUBLIC WORKS  
APPROVED BY *[Signature]* DATE 4-2-77  
OFFICE ENGINEER  
PARK DEPARTMENT  
TRAFFIC DIVISION  
ASSISTANT CITY ENGINEER

**STREET PLAN AND PROFILE**  
**TRACT NO. 8871**  
**VIA SAN JOSE**  
PROJECT NO. 12-1973  
SHEET 3 of 3  
FILE NO. 004-054A  
SCALE: HORIZ. 1"=40' VERT. 1"=4'