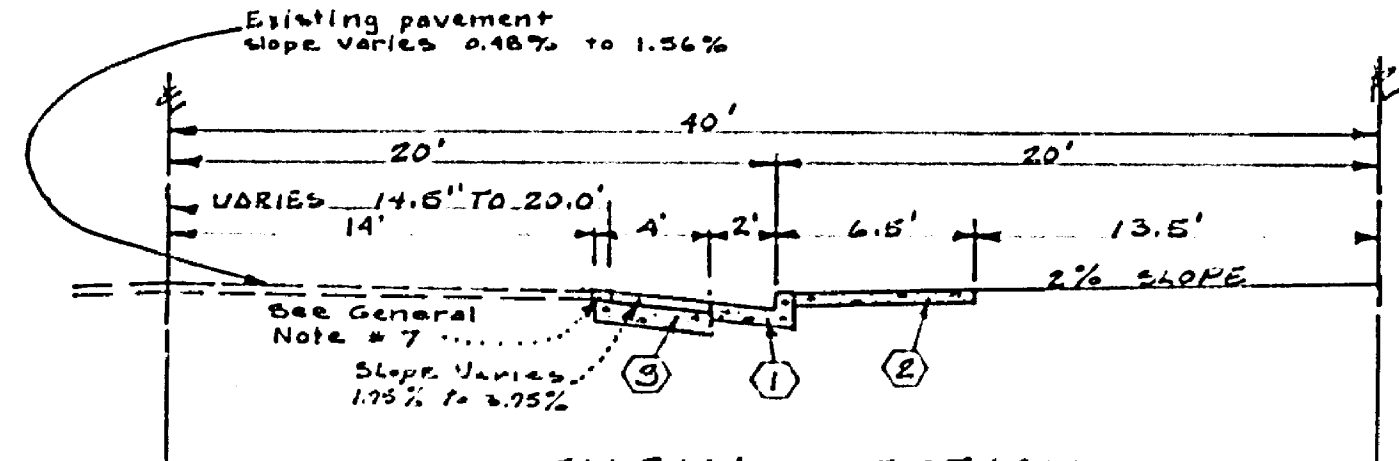


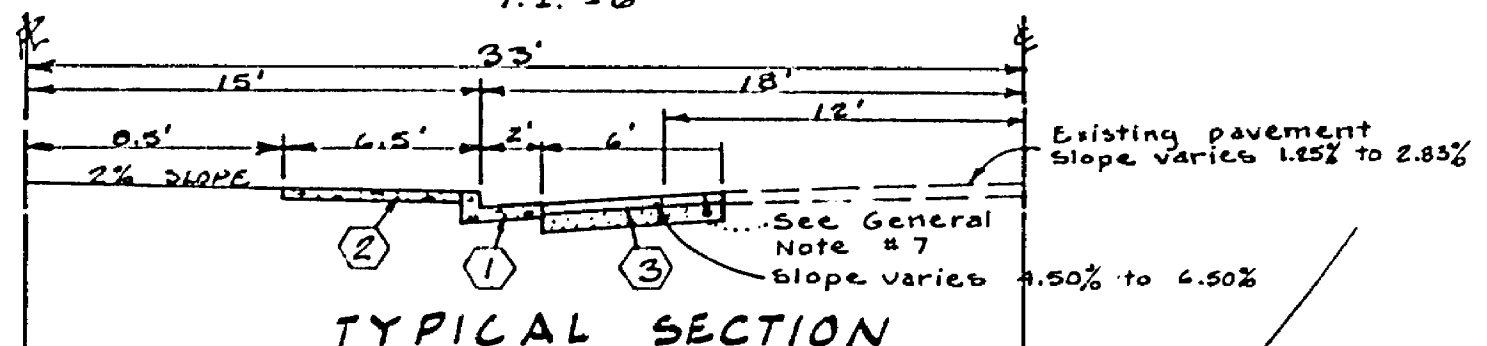
**TYPICAL SECTION
DIANA AVENUE**

NO SCALE
T.I. = 5



**TYPICAL SECTION
HARRISON STREET**

NO SCALE
T.I. = 6

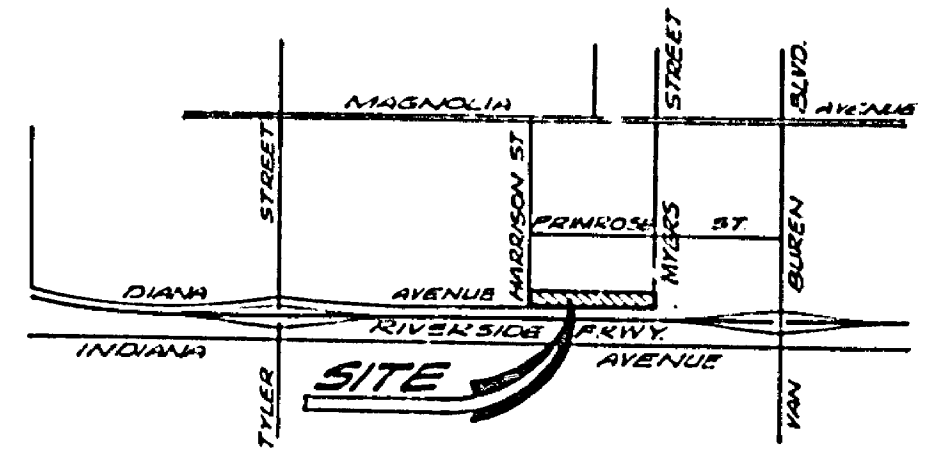


**TYPICAL SECTION
MYERS STREET**

NO SCALE
T.I. = 5

GENERAL NOTES

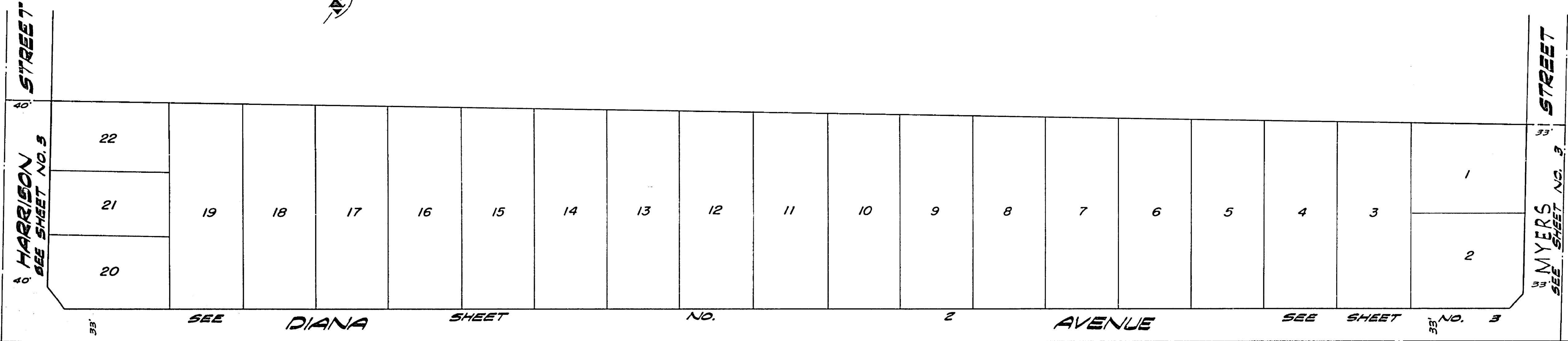
- CONSTRUCTION SHALL BE IN ACCORDANCE WITH THE STANDARD SPECIFICATIONS FOR PUBLIC WORKS CONSTRUCTION 1976 EDITION AND PER CITY OF RIVERSIDE STANDARD DRAWINGS.
- ALL FLAGGED ELEVATIONS SHALL BE STAKED IN THE FIELD BY THE ENGINEER.
- THE SUBDIVIDER SHALL ARRANGE FOR A SOIL TEST TO BE MADE BY A SOILS ENGINEER AFTER THE STREETS HAVE BEEN PREPARED TO ROUGH GRADE. DEPTH OF BASE MATERIAL AND A.C. PAVEMENT SHALL BE DETERMINED BY THE CITY OF RIVERSIDE DESIGN STANDARDS AND TEST PROCEDURES.
- LOCATION AND SIZE OF DRIVEWAY APPROACHES (STD 302) TO BE DETERMINED AT THE TIME OF CONSTRUCTION AS APPROVED BY THE TRAFFIC ENGINEER.
- CURB AND GUTTER TO BE STAKED ON 3' OFFSET AT 25' INTERVALS.
- TRAFFIC CONTROL SIGNS MUST BE IN PLACE PRIOR TO OPENING STREETS TO TRAFFIC.
- TRIM EDGE OF EXISTING PAVEMENT WHERE NEW PAVEMENT JOINS, TO A SMOOTH STRAIGHT LINE. CONSTRUCT MATCH UP PAVING AS SHOWN ON THE PLANS AND OVERLAY PAVING AS DIRECTED IN THE FIELD TO PRODUCE A SMOOTH SURFACE.
- 4" x 4" BLOCKOUTS REQUIRED FOR MAILBOXES IN CURB SIDEWALK.
- IT SHALL BE THE RESPONSIBILITY OF THE CONTRACTOR TO CLEAR THE RIGHT OF WAY IN ACCORDANCE WITH THE PROVISIONS OF LAW AS IT AFFECTS EACH UTILITY INCLUDING IRRIGATION LINES AND APPURTENANCES, AND AT NO COST TO THE CITY.



LOCATION MAP
NO SCALE

CONSTRUCTION NOTES:

- CONSTRUCT STANDARD 200 CURB AND GUTTER - 6" C.F.
- CONSTRUCT STANDARD 325 CURB LINE SIDEWALK
- CONSTRUCT "A.C." PAVING OVER "D.G." OR "AC" PAVING OVER COMPACTED NATIVE.
- INSTALL 2" x 4" REDWOOD HEADER.
- CONSTRUCT STANDARD 410 CURB OUTLET STRUCTURE, BETWEEN C.F. AND #.
- CONSTRUCT STANDARD 304 WHEELCHAIR RAMP.



INDEX MAP
SCALE 1" = 50'

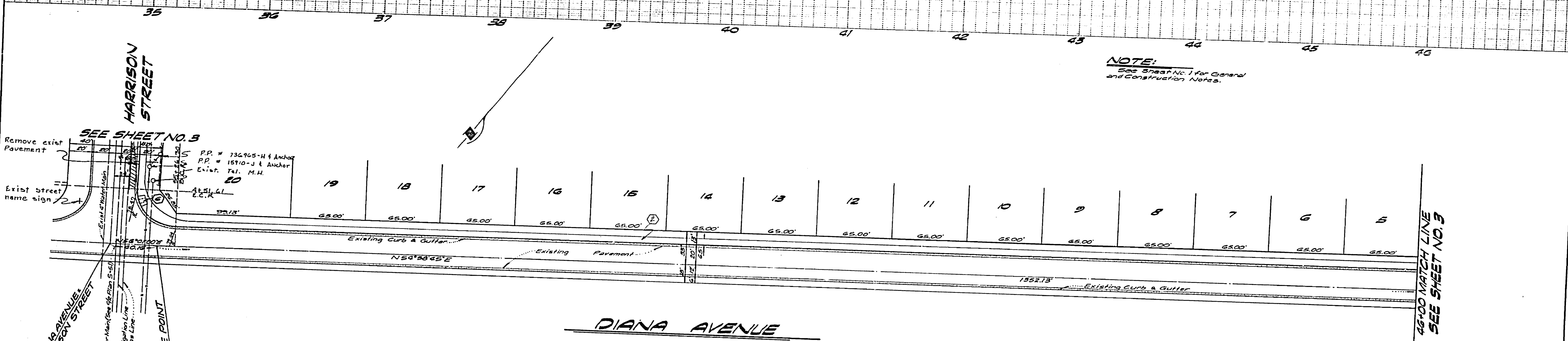
ENGINEERS' NOTE

The private engineer signing these plans is responsible for the accuracy and acceptability of the work hereon. In the event of discrepancies arising during construction, the private engineer signing these plans shall be responsible for determining an acceptable solution and revising the plans for approval by the City.

BENCH MARK:
0-58, at the intersection of Magnolia Avenue & Revere Street, at the Arlington Branch of the Riverside Public Library, on the East side of the Main Entrance, & about 10 feet ground. A 3" dia. disk stamped "0 33 1924".
Elevation 788.809

KICAK WAINSCOTT & ASSOCIATES CIVIL ENGINEERS GRAND TERRACE, CALIFORNIA APPROVED BY: <i>L.A. Waincott</i> DATE 2-3-77 R.C.E. 10046 W.O.S.-01 10 OWENS-KENNEDY, INC. F.B.	CITY OF RIVERSIDE, CALIFORNIA DEPARTMENT OF PUBLIC WORKS APPROVED BY: <i>[Signature]</i> DATE 1-1-77 OFFICE ENGINEER: <i>[Signature]</i> DATE 1-1-77 PARK DEPARTMENT: <i>[Signature]</i> DATE 1-1-77 TRAFFIC DIVISION: <i>[Signature]</i> DATE 1-1-77 ASSISTANT CITY ENGINEER: <i>[Signature]</i> DATE 1-1-77	STREET PLAN AND PROFILE TRACT NO. 8121 INDEX SHEET	PROJECT NO. R-1974 SHEET 1 OF 3 FILE NO. 015-01-A
		SCALE: AS SHOWN	

NOTE:
See Sheet No. 1 for General and Construction Notes.

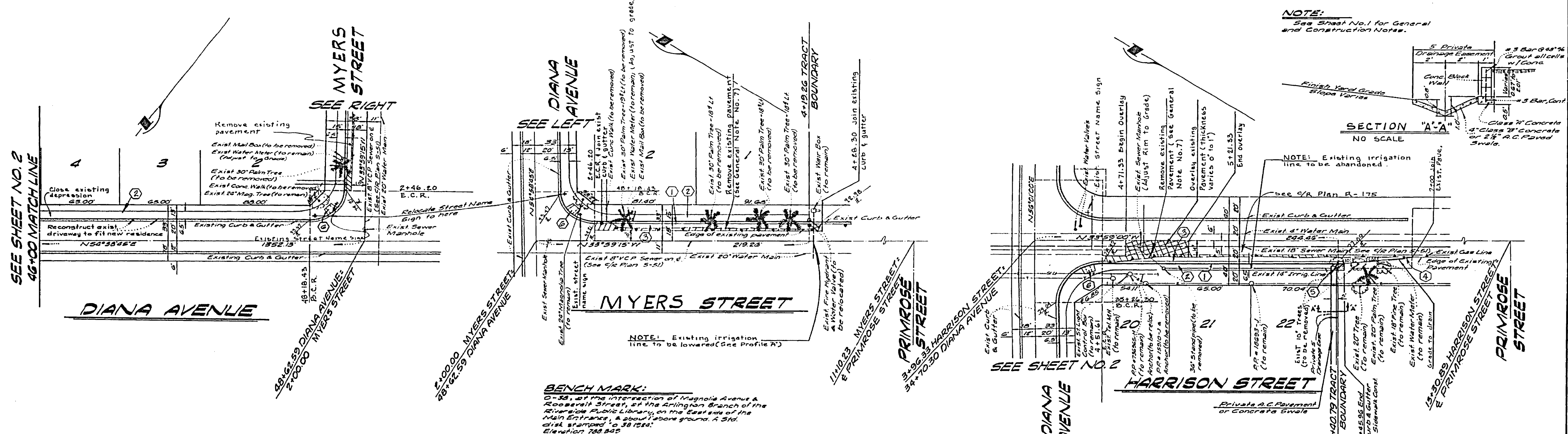
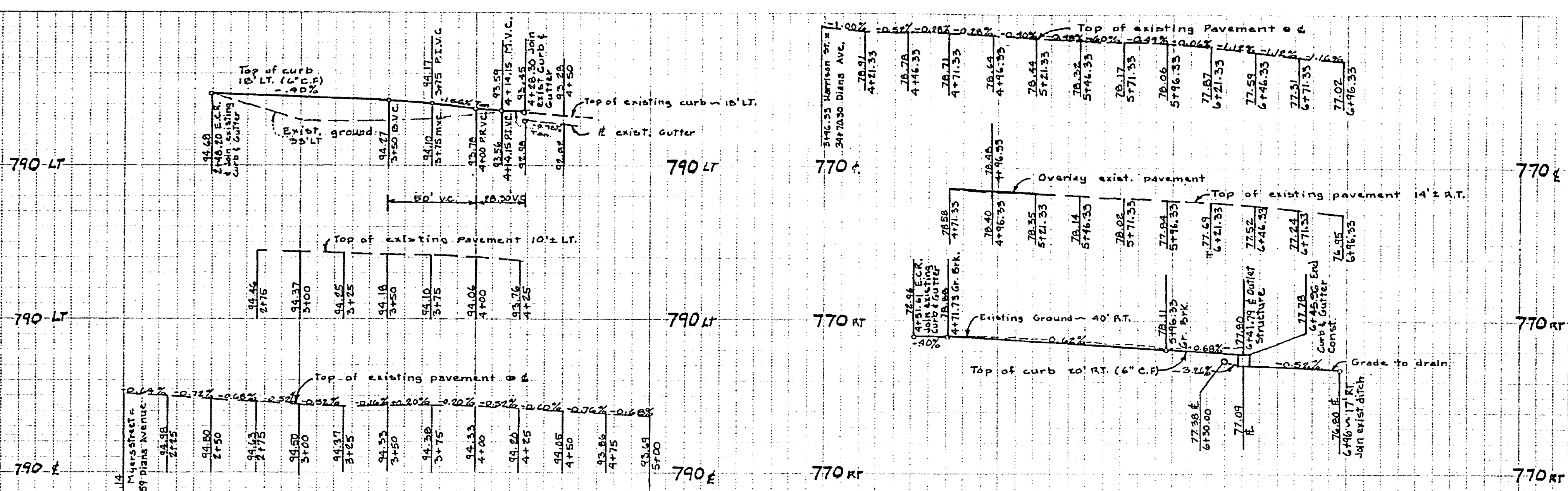
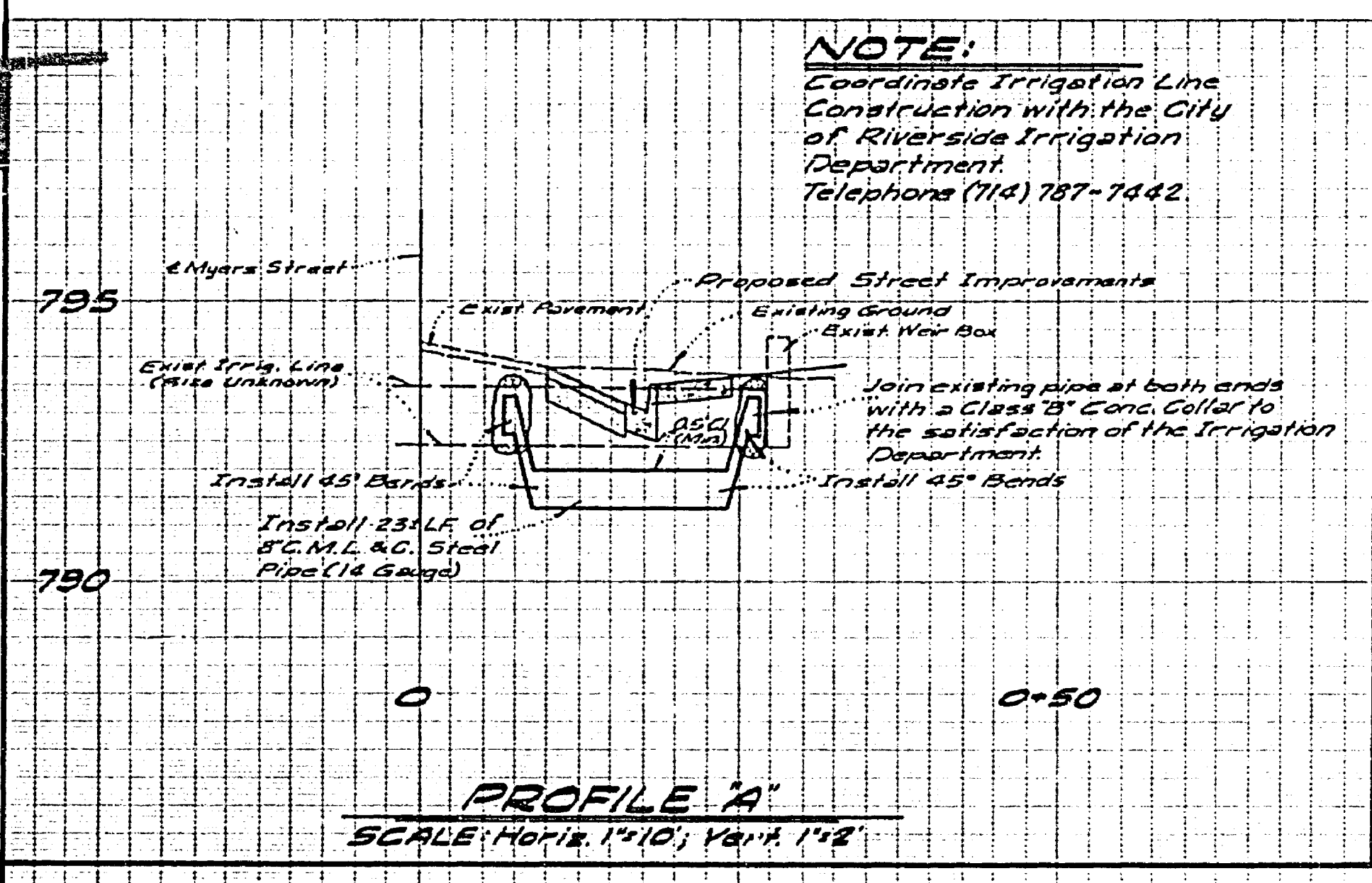


46+00 MATCH LINE
SEE SHEET NO. 3

BENCHMARK:
C-13 at the intersection of Magnolia Avenue & Roosevelt Street, at the Arlington Branch of the Riverside Public Library, on the East side of the Main Entrance, & about 1' above ground. A Stk. disk stamped to SD 1924. Elevation 788.329

Approved by <i>[Signature]</i> 9-22-77 Chief Utilities Engineer - I.P.P. Date		KICAK WAINSCOTT & ASSOCIATES CIVIL ENGINEERS GRAND TERRACE, CALIFORNIA APPROVED BY <i>[Signature]</i> DATE 2-3-77 R.C.E. 10082 W.O. 018-01 FOR DIVISIONS - KENNEDY, INC. F.B.		CITY OF RIVERSIDE, CALIFORNIA DEPARTMENT OF PUBLIC WORKS APPROVED BY <i>[Signature]</i> DATE 10-5-77 OFFICE ENGINEER 200 10-5 PARK DEPARTMENT 110 7-28 TRAFFIC DIVISION 110 7-28 ASSISTANT CITY ENGINEER 10-4 DESIGNED BY <i>[Signature]</i> DRAWN BY <i>[Signature]</i> CHECKED BY <i>[Signature]</i>		STREET PLAN & PROFILE TRACT NO. 3121 DIANA AVENUE PROJECT NO. R-1974 SHEET 2 OF 3 FILE NO. 018-01-A SCALE: HORIZ. 1"=50' VERT. 1"=5'	
--	--	---	--	--	--	---	--

NOTE:
 Coordinate Irrigation Line
 Construction with the City
 of Riverside Irrigation
 Department
 Telephone (714) 787-7442



KICAK WAINSCOTT & ASSOCIATES
 CIVIL ENGINEERS
 GRAND TERRACE, CALIFORNIA

CITY OF RIVERSIDE, CALIFORNIA
 DEPARTMENT OF PUBLIC WORKS

STREET PLAN & PROFILE
TRACT NO. 8121
DIANA AVENUE - MYERS
STREET - HARRISON STREET

PROJECT NO.
R-1974

Approved by
Walter J. Hylton
 Chief Utilities Engineer - 7-23-77

APPROVED BY *L.O. Waincott* DATE 2-3-77
 R.C.E. 10050
 W.O. 015-01 FOR OWENS-KENNEDY, INC. F.B.

MARK REVISIONS APPR. DATE
 DESIGNED BY *R.M.* DRAWN BY *B.H.* CHECKED BY *W.H.*

APPROVED BY *Walter J. Hylton* DATE 10-5-77
 OFFICE ENGINEER
 PARK DEPARTMENT
 TRAFFIC DIVISION
 ASSISTANT CITY ENGINEER

APPROVED BY *Walter J. Hylton*
 DIRECTOR OF PUBLIC WORKS
 DATE 10-5-77

SHEET **5** OF **3**
 FILE NO. 015-01-A