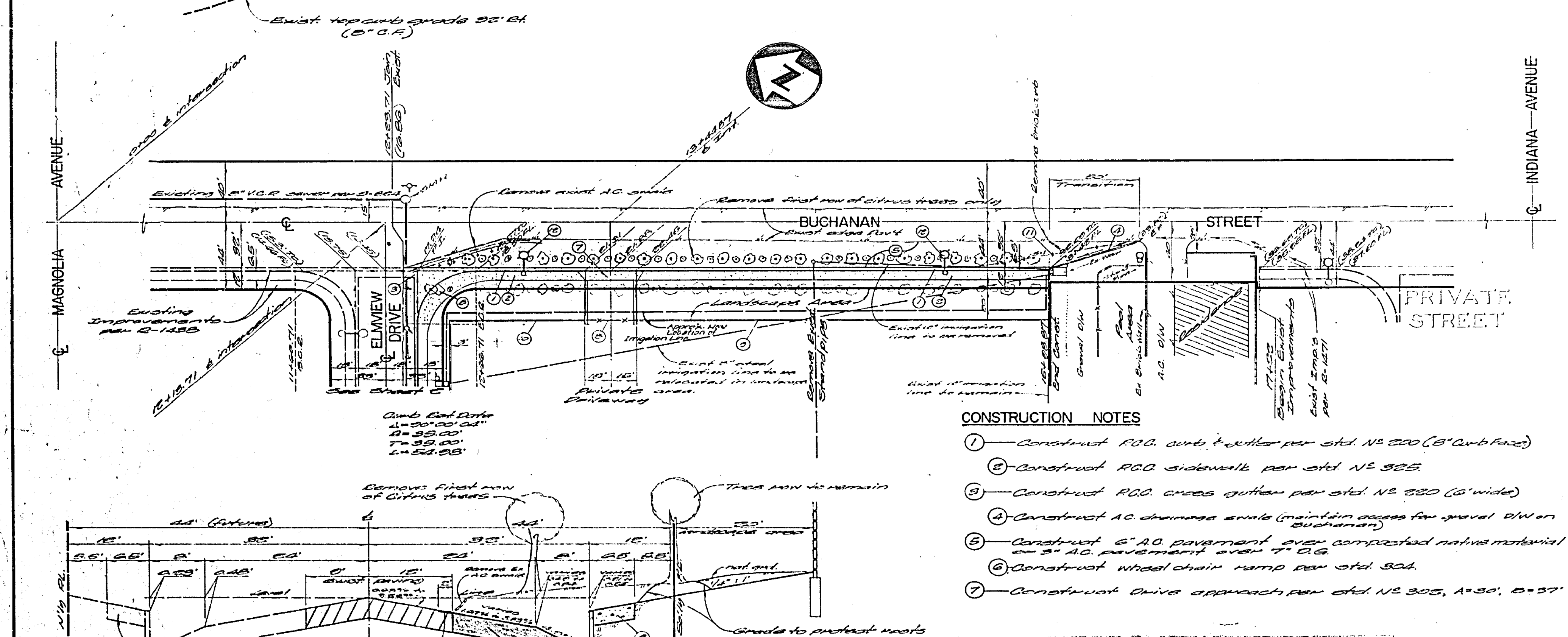


BENCH MARK (E-E-E)
 1/2" nail & top in culvert headwall
 and line vertically above it. Elevation
 and Sta. Station from R.S. 1977/1978
 Elevation = 640.28

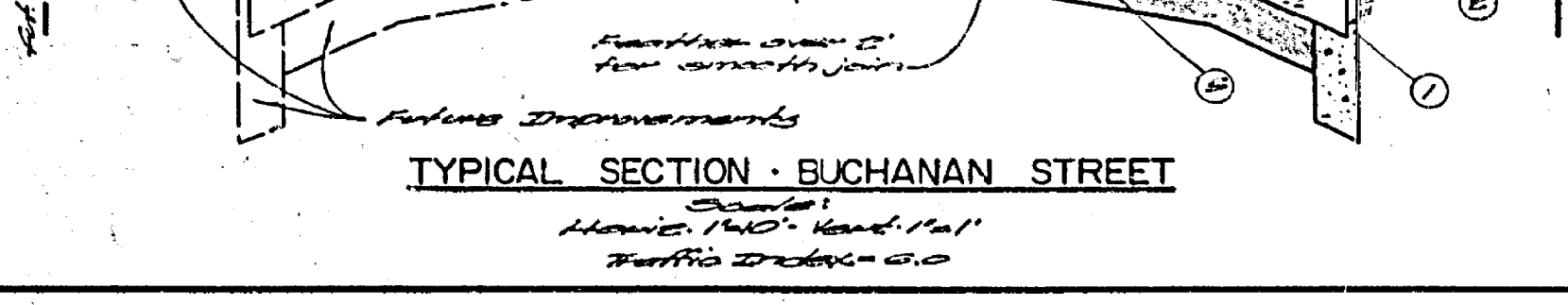
ESTIMATE OF QUANTITIES				
ITEM	ESTIMATE	QUANTITIES	ITEM	QTY.
1" Curb and gutter	1000	1000	Decorative Caststone Handrails	100
2" Curb and gutter	1000	1000	Decorative Abacus Rail	100
3" A.C. concrete curb and gutter	1000	1000	Decorative Stone Arch	100
Concrete Open Channel	1000	1000	Decorative Metal Arch	100
Concrete Storm Drain	1000	1000	Decorative Storm Drain	100
1" A.C. Pavement	1000	1000	Decorative Storm Drain	100
2 1/2" A.C. Pavement	1000	1000		
6" A.C. Approach Pave	1000	1000		
Municipal Street	1000	1000		



- GENERAL NOTES:**
- It shall be the responsibility of the contractor to clear the right of way in accordance with the provisions of law as to affects such utility, including irrigation lines and appurtenances and of no cost to the City.
 - Construction shall be in accordance with the City of Riverside Department of Public Works, Standard Specifications, and the Standard Specifications for Public Works Construction, 1978 Edition.
 - Paint curb and gutter and paint binder are required.
 - Curb and gutter shall be spaced with 3' intervals at 25' intervals.
 - Trim edge of existing pavement where new paving joins existing pavement, to a clean, straight line. Construct match up paving as shown and overlay paving as directed in the field to produce a smooth drain section.
 - Quantities shown are for information only and the City of Riverside is not responsible for their accuracy.
 - All traffic signs shall be installed prior to opening the streets to traffic.
 - See "Street Lighting Plans" for quantity and location of required street lights.
 - All flagpole elevations shall be checked in the field by the private engineer.
 - Construct the curb and gutter curb, this Division, at 7:15-10:15 24 hours prior to removal of ties.
 - See landscaping and sprinkler system plans for roadway on Buchanan Street and Elmview Drive.
 - The Private Engineer signing these plans is responsible for assuming the accuracy and responsibility of the work shown. In the event of discrepancies involving quantity construction as a result of errors or omissions, the private engineer shall be responsible for determining an acceptable solution and notifying the Plans for approval by the City.

- CONSTRUCTION NOTES**
- Construct R.C.C. curb & gutter per std. N2 200 (3" curb face)
 - Construct R.C.C. sidewalk per std. N2 325
 - Construct R.C.C. cross gutter per std. N2 230 (3" wide)
 - Construct A.C. drainage curbs (maintain access for gravel drain on Buchanan)
 - Construct 5" A.C. pavement over compacted native material on 3" A.C. pavement over T.O.G.
 - Construct wheel chair ramp per std. 304
 - Construct drive approach per std. N2 305, A=30', B=37'

- Construct chain link fire entrance gate
- Construct conc. block retaining wall (Private)
- Construct 6' high conc. block wall (Private)
- Install 4 type "L" markers per std. N2 225
- Install street light std. C-22 electrical plan



ENGINEERING COMPANY
 Public Works • Land Development • Planning
 3272 North E Street, Suite D
 San Bernardino, California 92405
 714/883-8663

WES
 William E. Smith R.C.E. 1192

8-26-76
 Date

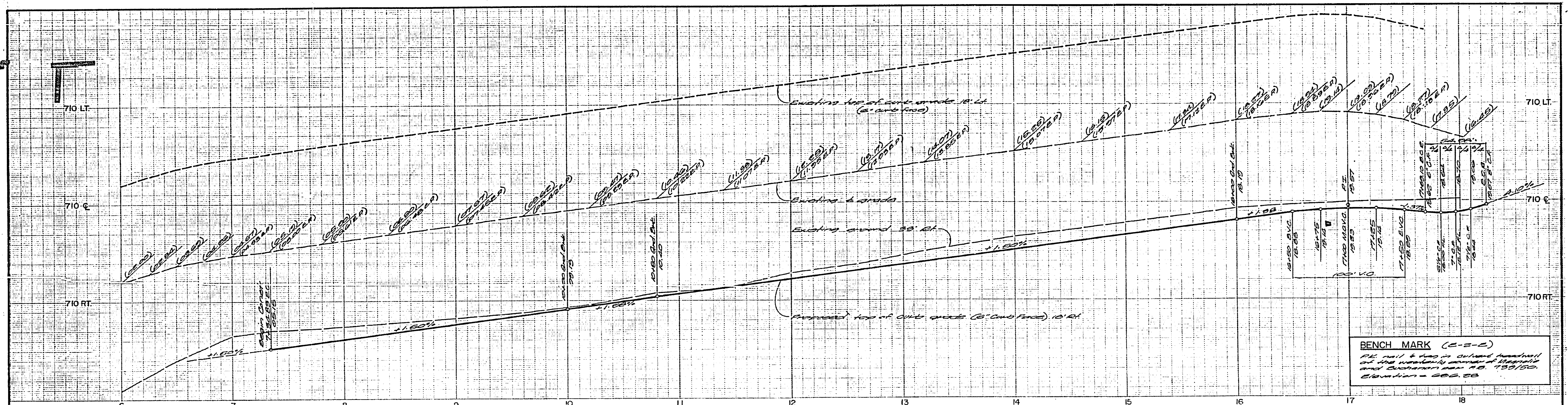
CITY OF RIVERSIDE, CALIFORNIA
 PUBLIC WORKS DEPARTMENT

PLAN & PROFILE
BUCHANAN STREET
 ELMVIEW DR. TO 495' S'LY
 C-22-752

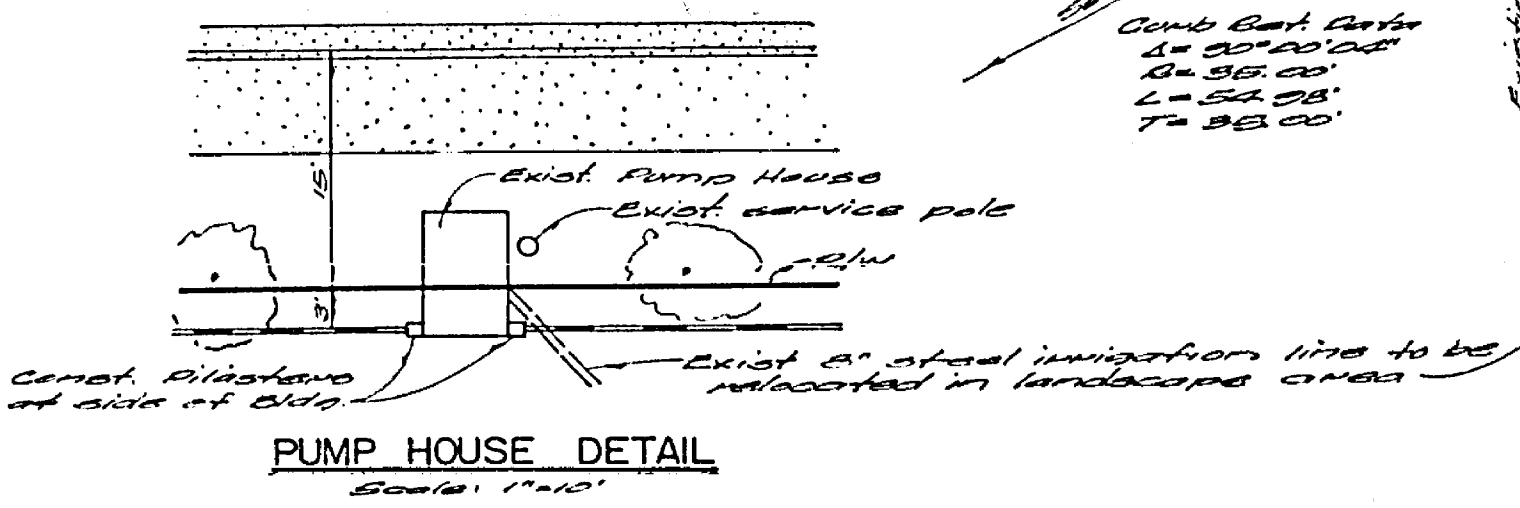
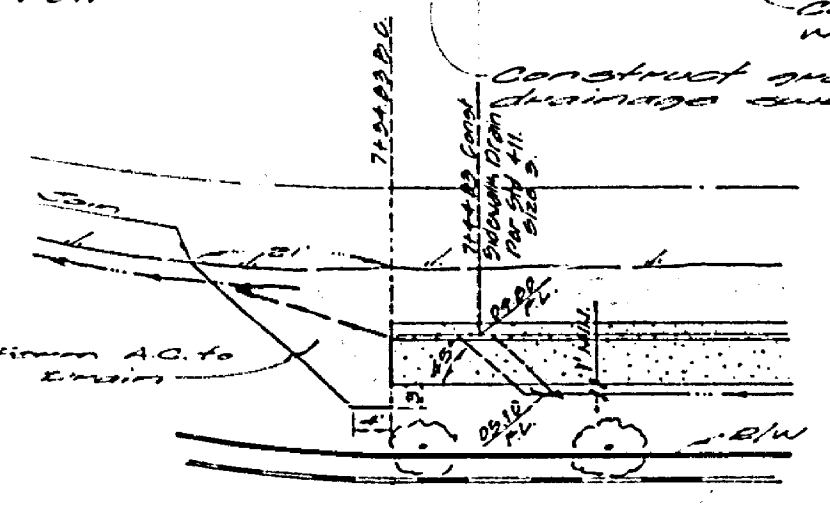
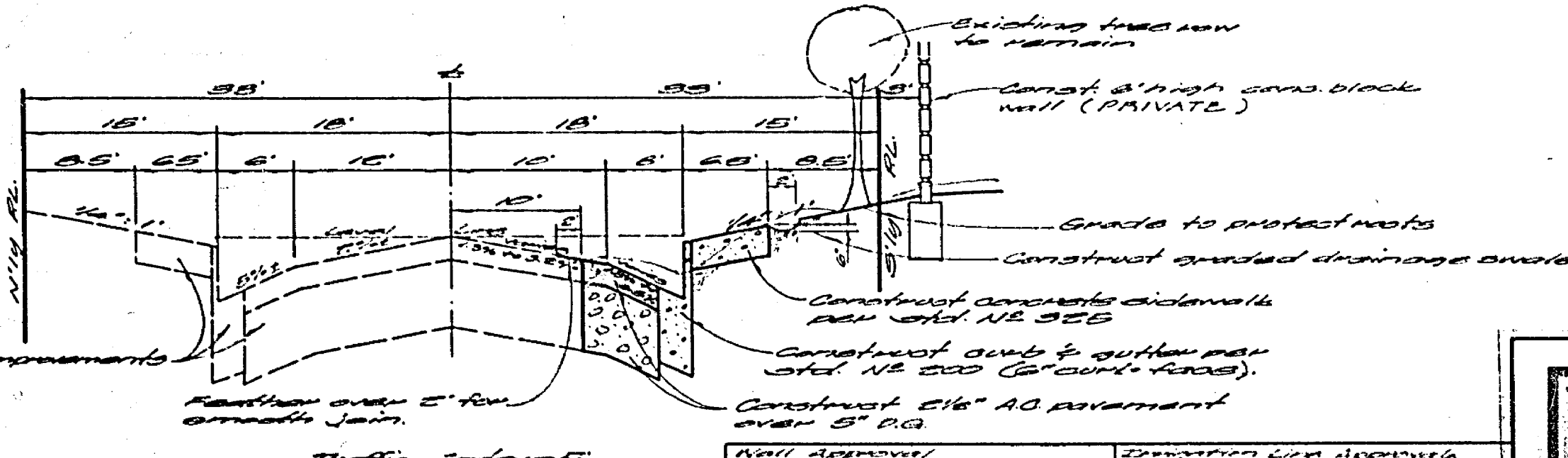
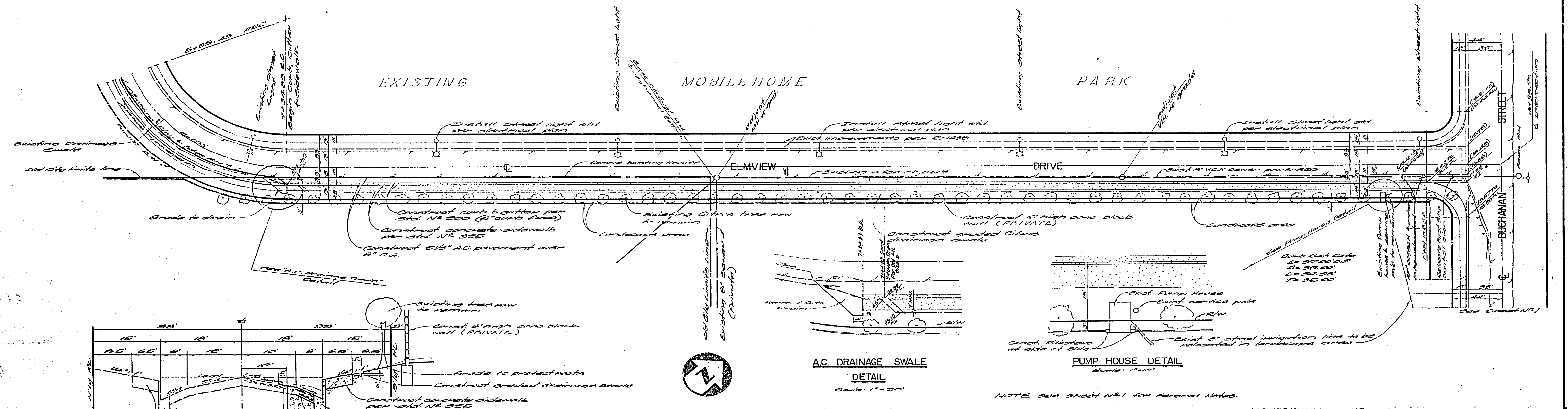
INDEXED 7A
 ACCOUNT NO.
 DRAWING NUMBER
R-1978
 SHEET 1 OF 2

APPROVED BY: [Signature]
 DATE: 4-22-77
 DIRECTOR OF PUBLIC WORKS

SCALE: HORIZ: 1" = 40' VERT: 1" = 4'



BENCH MARK (E-3-E)
 12' x 12' x 12' in. above ground
 at the northeast corner of Buchanan
 and Elmview near N.B. 133/50
 Elevation = 682.28



TYPICAL SECTION - ELMVIEW DRIVE

A.C. DRAINAGE SWALE DETAIL

PUMP HOUSE DETAIL

NOTE: SEE SHEET NR1 FOR GENERAL NOTES.

WES ENGINEERING COMPANY
 Public Works • Land Development • Planning
 3372 North E Street, Suite D
 San Bernardino, California 92405
 714/883-8663

William E. Smith
 Vice President

8-26-76
 Date

CITY OF RIVERSIDE, CALIFORNIA
PUBLIC WORKS DEPARTMENT

APPROVED BY	DATE	APPROVED BY	DATE
PRINCIPAL ENGINEER	4/15/77	DIRECTOR OF PUBLIC WORKS	4/15/77
TRAFFIC DIVISION	4/15/77		
CHIEF PUBLIC WORKS ENGINEER	4/15/77		

DATE 4-25-77

PLAN & PROFILE
ELMVIEW DRIVE
 BETWEEN HILLVIEW DR. & BUCHANAN ST.
 685-760

SCALE: HORIZ. 1"=10', VERT. 1"=4'

ACCOUNT NO.
 DRAWING NUMBER
R-1978
 SHEET 2 OF 2