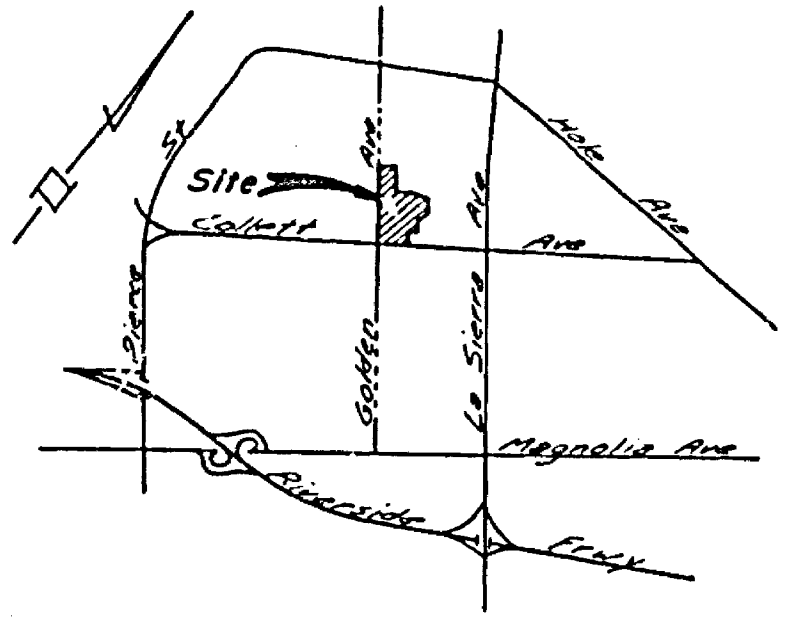


STREET NAME AND TRAFFIC SIGN SCHEDULE

(A)	GOLDEN AVE	4300
(B)	DELTA WAY	11600
(C)	MORRISTOWN DR	4300
(D)	DELTA WAY	11600
(E)	CAMERON DR	11600
(F)	MORRISTOWN DR	4300
(G)	CAMERON DR	11600
(H)	BLUERIDGE DR	4300
(I)	PLANTATION CT	11600
(J)	BLUERIDGE DR	4300
(K)	R1 (STOP SIGN) 30" OCTAGON	
(L)	WSB (Not A Through St.) 24" X 36"	
(M)	GOLDEN AVE	4300
(N)	COLLETT AVE	11600

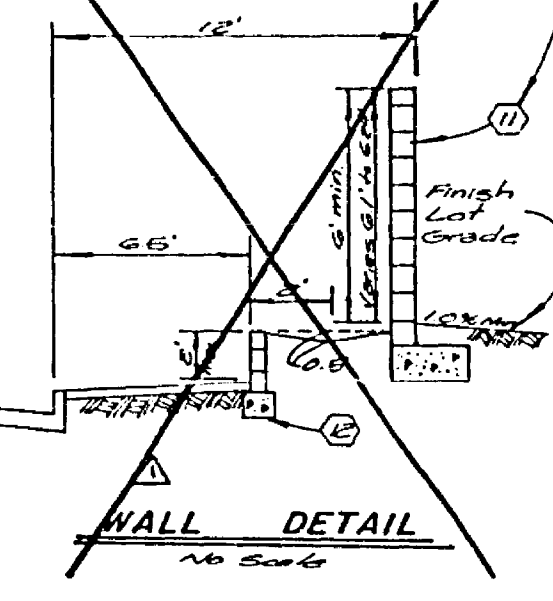


INDEX MAP
NO SCALE

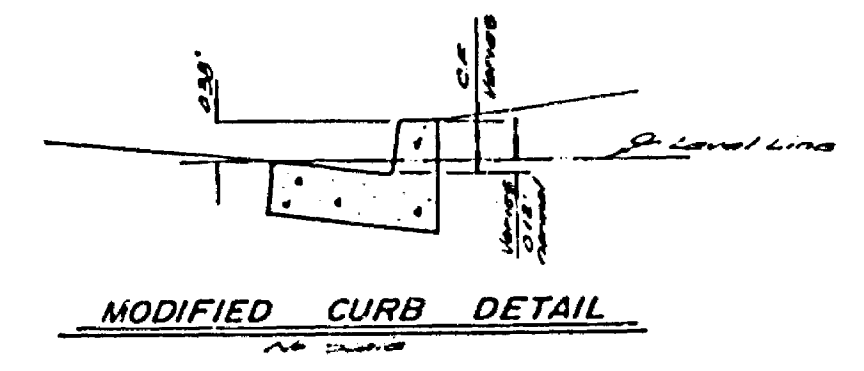


LOCATION MAP
NO SCALE

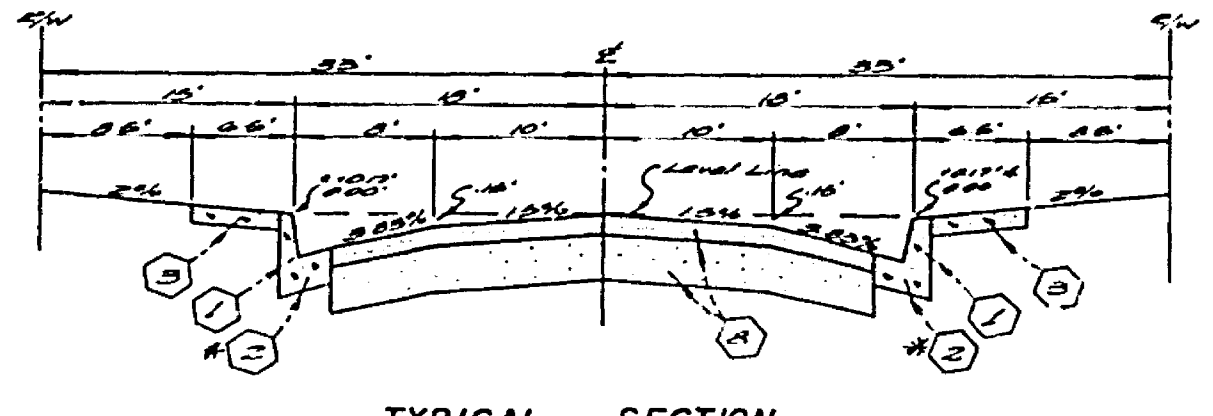
Refer to Landscape plan prepared by Scott Hill Villa, for type & material of Retaining Frontage Block Wall.



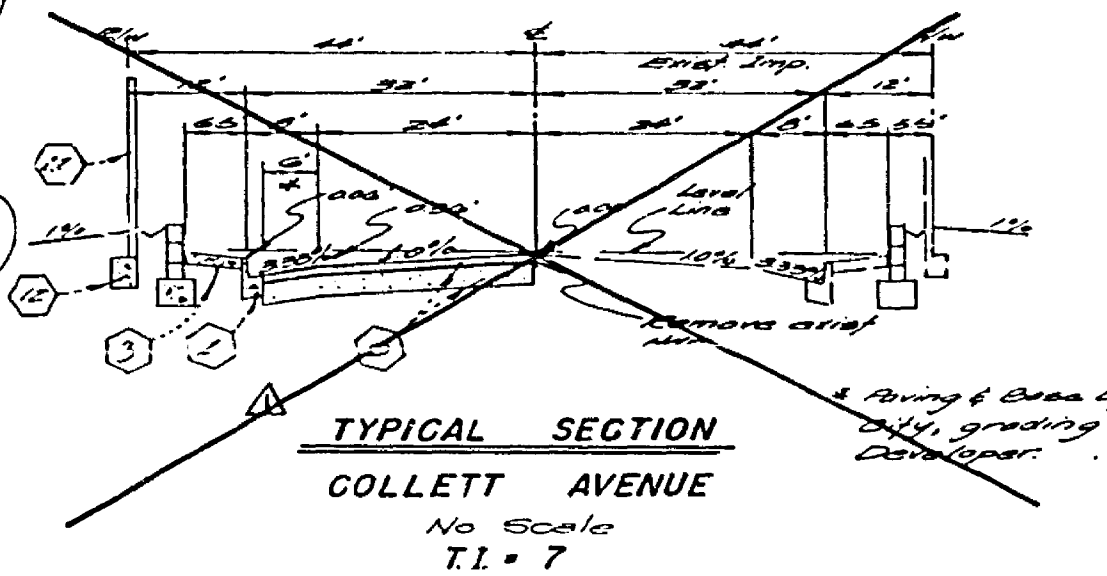
WALL DETAIL
NO SCALE



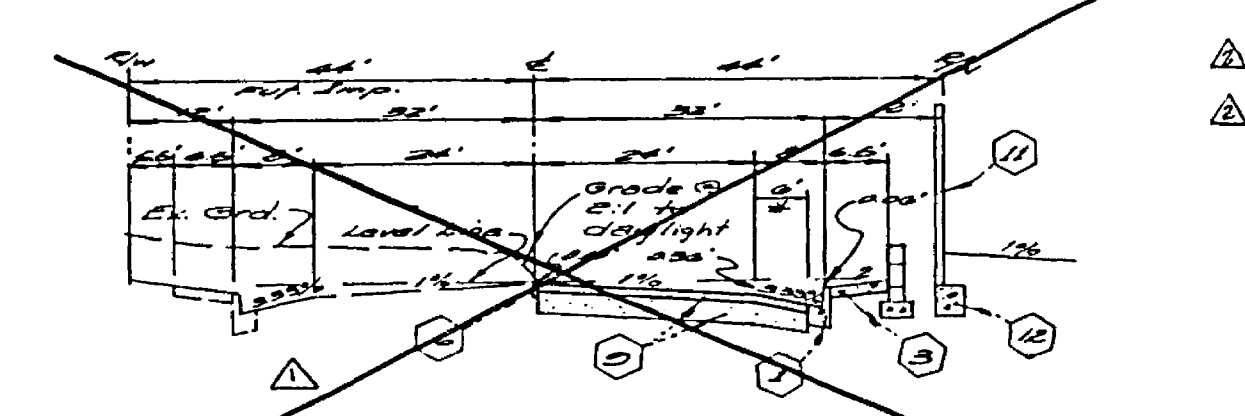
MODIFIED CURB DETAIL
NO SCALE



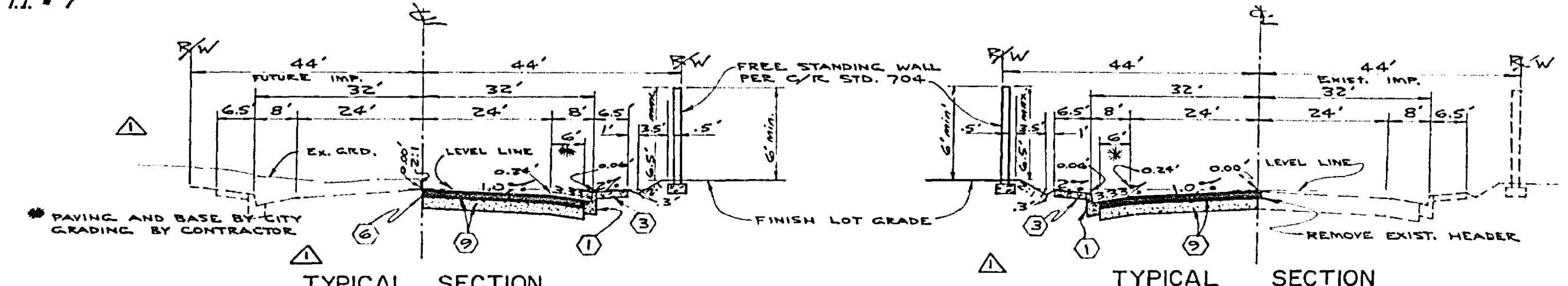
TYPICAL SECTION
CAMERON DR
MORRISTOWN DR
DELTA WAY
BLUERIDGE DR
PLANTATION CT.
AS SHOWN
T.I. = 5



TYPICAL SECTION
COLLETT AVENUE
NO SCALE
T.I. = 7



TYPICAL SECTION
GOLDEN AVE.
NO SCALE
T.I. = 7



TYPICAL SECTION
GOLDEN AVENUE
T.I. = 7

TYPICAL SECTION
COLLETT AVENUE
T.I. = 7

GENERAL NOTES

- The private engineer signing these plans is responsible for assuring the accuracy and acceptability of the work hereon. In the event of discrepancies arising during construction, the contractor or his representative shall be responsible for clarifying or correcting any errors or omissions, the private engineer shall be responsible for preparing an acceptable solution and retaining the plans for approval by the city.
- The Developer is to coordinate the installation of access paving on Collett & Golden with the city construction inspector.
- Construction shall be in accordance with the standard specifications for Public Works Construction, 1972 Edition, and per City of Riverside Standard Drawings.
- All flagged elevations shall be checked in the field by the private engineer.
- The Subdivider shall arrange for a soil test to be made by a soils Engineer after the streets have been prepared to rough grade. Depth of base material and AC paving shall be determined by the City of Riverside Design Standards and Test Procedures.
- Location and size of driveway approaches (SHT 302) to be determined at the time of construction, as approved by the Traffic Engineer.
- Traffic control signs must be in place prior to opening streets to traffic.
- It shall be the responsibility of the contractor to clear the right of way in accordance with the provisions of law as to its effects such utility including irrigation lines and appurtenances and of no cost to the City.
- See "Street Lighting Plan" for quantity and location of required Street Lights.
- Curb shall be placed at 20' intervals and 3' offset where grades are 0.4% or greater. Curb having grades of less than 0.4% will be placed at 12.5' intervals and 3' offset. In addition, on curb grades of less than 0.4% the runs of 20' reinforcing bar will be placed in the gutter and 3/4" steel dowels will be required at all expansion joints in curb.
- Trim edge of existing pavement where new pavement joins to a smooth straight line. Construct match up paving as shown on plans to produce a smooth section.
- 1/2" x 4" blockouts for mailboxes required in curb sidewalks.
- See landscaping and Sprinkler System plan for parkway on Golden Avenue and Collett Avenue.
- In order to coordinate the City's portion of the work on Collett Avenue and Golden Avenue, the developer shall give the City 45 days notice in order that the developer's and the City's work may be installed concurrently.
- The Contractor shall contact the Public Service Dept. (787.7251) to pick up any existing 36" Barriercades that are being removed. The City's Inspector will make the final determination on whether a barricade can be relocated.

CONSTRUCTION NOTES

- Construct ACC curb & gutter per Riverside City Standard No. 200 (A.C.P.).
- Construct ACC curb & gutter per Riverside City Standard No. 200 (B.C.P.).
- Construct 6" ACC Curb Sidewalk per Riverside City Standard No. 326.
- Construct 10" ACC Cross Gutter per Riverside City Standard No. 220.
- Construct wheelchair Ramps per Riverside City Standard No. 304.
- Construct 2"x4" Redwood Header.
- Construct barricades per City of Riverside Standard No. 180.
- Construct 2 1/2" AC over 3" D.O.
- Construct 4" AC over 11" D.O.
- Construct Type "L" Markers at 20' @.
- Construct 6" High Block Wall per Riverside City Standard No. 704. See wall detail of.
- Construct Reinforcing wall per Riverside City Standard No. 707. See wall detail of.

BENCH MARK
R.R. spike in P.P. 24589 J
@ S.E. corner La Sierra Ave and Collett Ave 94
F.B. 91815 Elev 70425

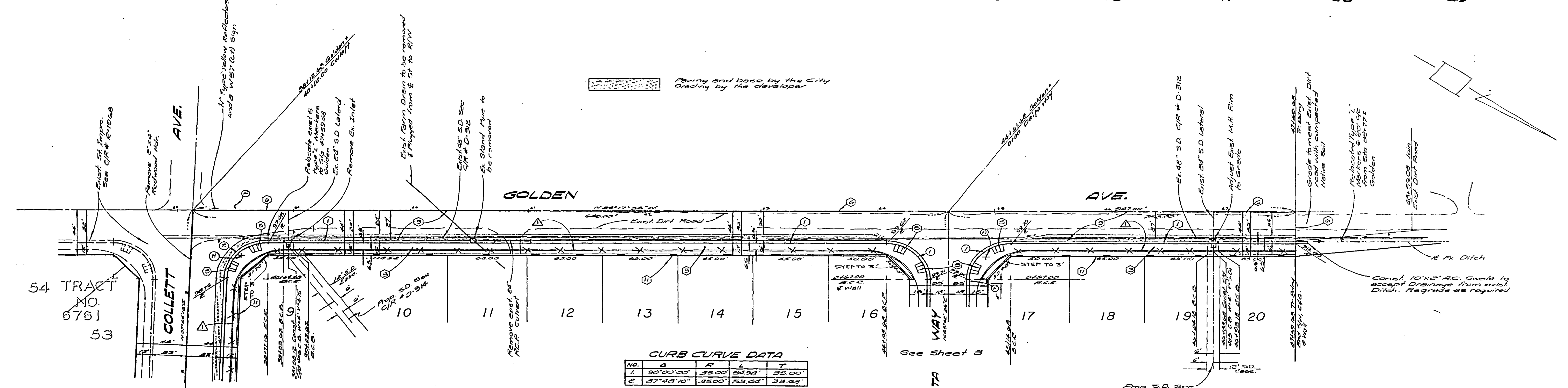
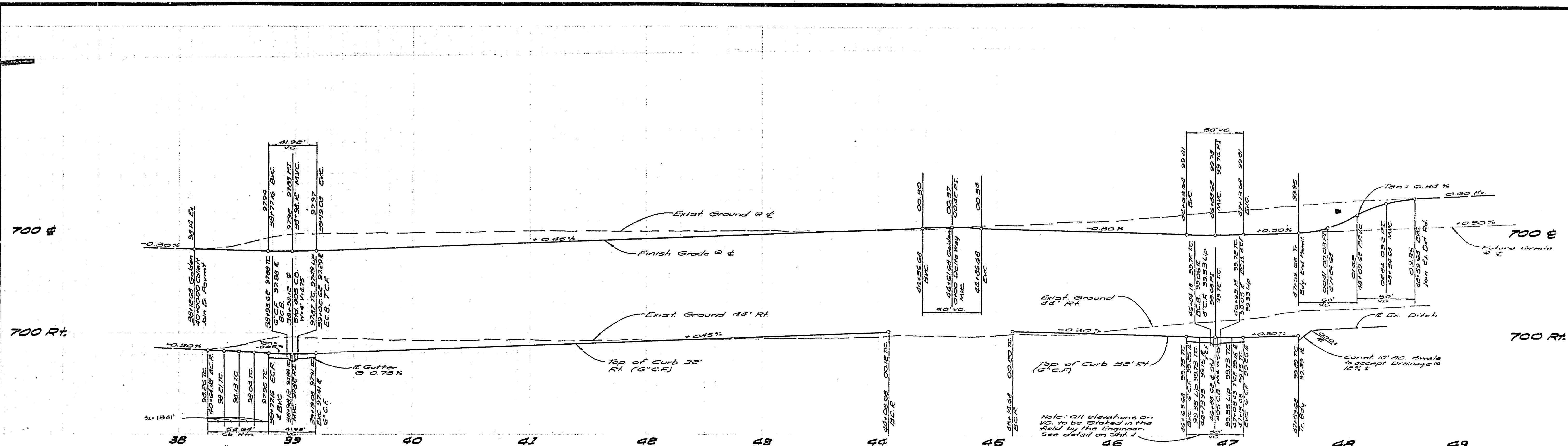
ALBERT A. WEBB ASSOCIATES
CIVIL ENGINEERS
RIVERSIDE, CALIFORNIA
APPROVED BY: *Albert A. Webb* DATE 4/4/77
R.E. No. 2832
W. 78-101 FOR PROCESSOR HOME'S P. 1032

NO.	REVISIONS	DATE	BY	CHKD.
1	ADD DRAW SECTION DEP. 50' @ 0.4% (G. 200)	1-16-76	AWB	AWB
2	REVISIONS	1-16-76	AWB	AWB
3	REVISIONS	1-16-76	AWB	AWB
4	REVISIONS	1-16-76	AWB	AWB
5	REVISIONS	1-16-76	AWB	AWB
6	REVISIONS	1-16-76	AWB	AWB
7	REVISIONS	1-16-76	AWB	AWB
8	REVISIONS	1-16-76	AWB	AWB
9	REVISIONS	1-16-76	AWB	AWB
10	REVISIONS	1-16-76	AWB	AWB
11	REVISIONS	1-16-76	AWB	AWB
12	REVISIONS	1-16-76	AWB	AWB
13	REVISIONS	1-16-76	AWB	AWB
14	REVISIONS	1-16-76	AWB	AWB
15	REVISIONS	1-16-76	AWB	AWB
16	REVISIONS	1-16-76	AWB	AWB
17	REVISIONS	1-16-76	AWB	AWB
18	REVISIONS	1-16-76	AWB	AWB
19	REVISIONS	1-16-76	AWB	AWB
20	REVISIONS	1-16-76	AWB	AWB
21	REVISIONS	1-16-76	AWB	AWB
22	REVISIONS	1-16-76	AWB	AWB
23	REVISIONS	1-16-76	AWB	AWB
24	REVISIONS	1-16-76	AWB	AWB
25	REVISIONS	1-16-76	AWB	AWB
26	REVISIONS	1-16-76	AWB	AWB
27	REVISIONS	1-16-76	AWB	AWB
28	REVISIONS	1-16-76	AWB	AWB
29	REVISIONS	1-16-76	AWB	AWB
30	REVISIONS	1-16-76	AWB	AWB
31	REVISIONS	1-16-76	AWB	AWB
32	REVISIONS	1-16-76	AWB	AWB
33	REVISIONS	1-16-76	AWB	AWB
34	REVISIONS	1-16-76	AWB	AWB
35	REVISIONS	1-16-76	AWB	AWB
36	REVISIONS	1-16-76	AWB	AWB
37	REVISIONS	1-16-76	AWB	AWB
38	REVISIONS	1-16-76	AWB	AWB
39	REVISIONS	1-16-76	AWB	AWB
40	REVISIONS	1-16-76	AWB	AWB
41	REVISIONS	1-16-76	AWB	AWB
42	REVISIONS	1-16-76	AWB	AWB
43	REVISIONS	1-16-76	AWB	AWB
44	REVISIONS	1-16-76	AWB	AWB
45	REVISIONS	1-16-76	AWB	AWB
46	REVISIONS	1-16-76	AWB	AWB
47	REVISIONS	1-16-76	AWB	AWB
48	REVISIONS	1-16-76	AWB	AWB
49	REVISIONS	1-16-76	AWB	AWB
50	REVISIONS	1-16-76	AWB	AWB
51	REVISIONS	1-16-76	AWB	AWB
52	REVISIONS	1-16-76	AWB	AWB
53	REVISIONS	1-16-76	AWB	AWB
54	REVISIONS	1-16-76	AWB	AWB

CITY OF RIVERSIDE, CALIFORNIA
PUBLIC WORKS DEPARTMENT
APPROVED BY: *William D. Brown* DATE 5/26/77
TRAFFIC DIVISION
CHIEF PUBLIC WORKS ENGINEER
DESIGNED BY: *AWB* DRAWN BY: *AWB* CHECKED BY: *AWB*

STREET PLAN AND PROFILE
TRACT NO. 6763-2
INDEX
SCALE: AS SHOWN

INDEXED BY: *AWB*
ACCOUNT NO.: *AWB*
DRAWING NUMBER: *R-1982*
SHEET 1 OF 6
10-101-A



CURB CURVE DATA

NO.	B	R	L	T
1	30'00"00"	3500	54.98'	35.00'
2	37'48"10"	3500	53.64'	33.68'

BENCH MARK

R.R. spike in RR # 24589J @ S.E. corner La Sierra Ave and Collett Ave 34 P.B. 9/25/55 Elev 701250

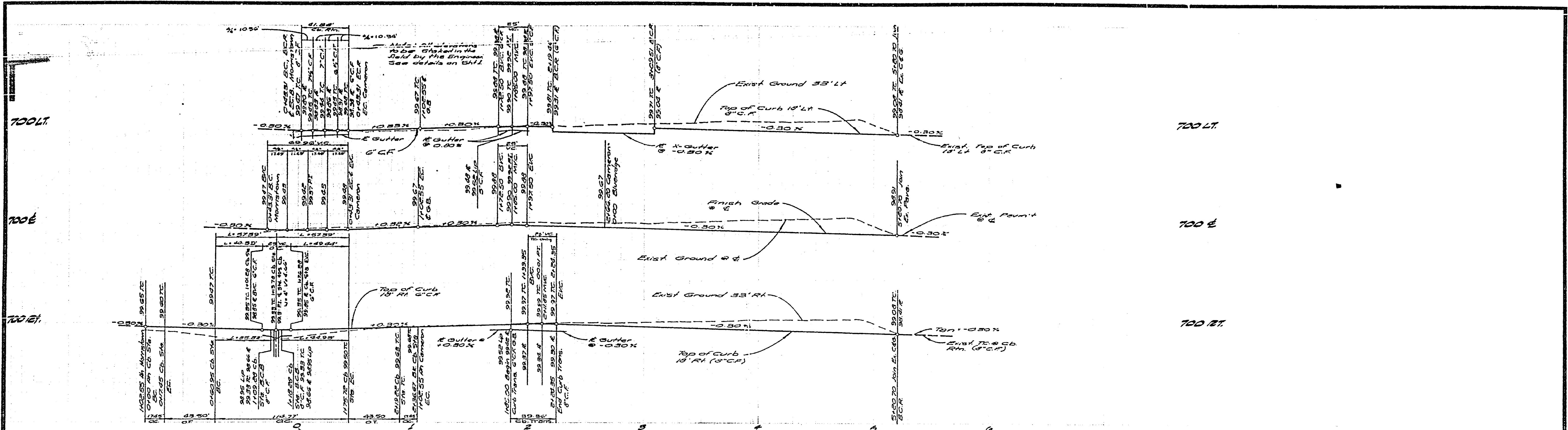
Irrigation Line Approval
By: *Fred Krumm* 4.5.77
Pacasetter Homes Inc. Date

ALBERT A. WEBB ASSOCIATES
CIVIL ENGINEERS
RIVERSIDE, CALIFORNIA
APPROVED BY: *Paul H. Webb* DATE 4/4/77
R.E. No. 2876

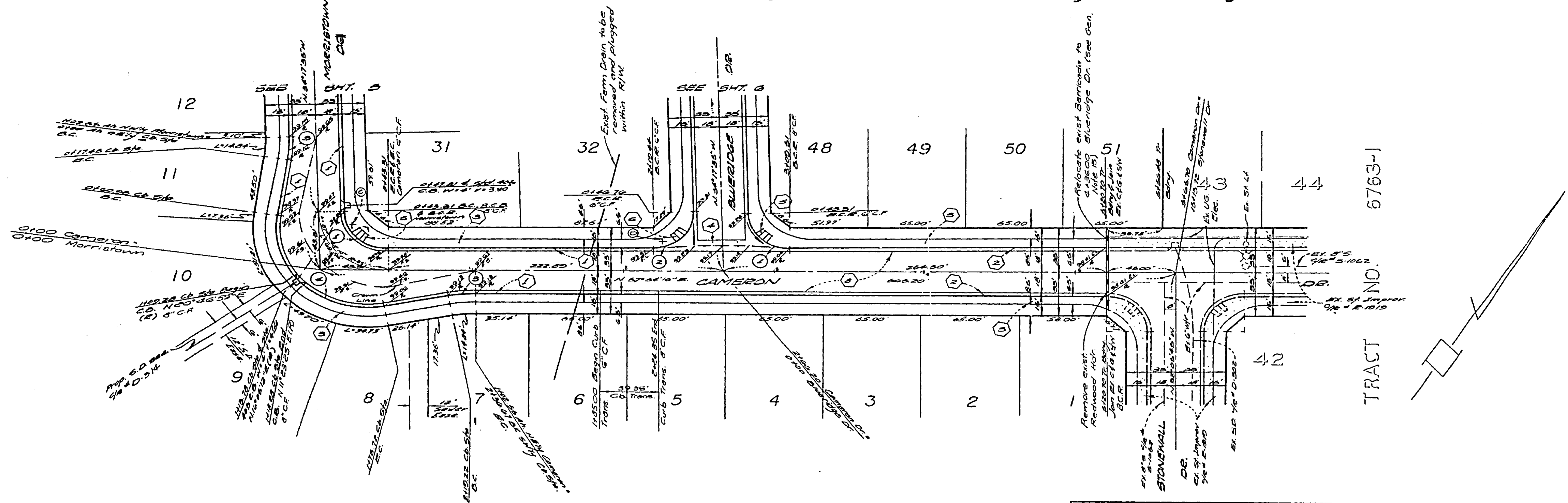
CITY OF RIVERSIDE, CALIFORNIA
PUBLIC WORKS DEPARTMENT
APPROVED BY: *U.S. ...* DATE 5/26/77
DIRECTOR OF PUBLIC WORKS

TRACT NO. 6763-2
GOLDEN AVENUE
SCALE: Horiz. 1"=40' Vert. 1"=4'

ACCOUNT NO. R-1982
DRAWING NUMBER R-1982
SHEET 2 OF 6
76.101-A



NOTE: See sheet 1 for General and Construction Notes.



CURB CURVE DATA

NO.	Δ	R	L	T
1	27°28'00"	2140'	41.88'	28.08'
2	28°11'00"	2140'	43.22'	28.08'
3	10°00'00"	1330'	17.46'	8.78'
4	10°40'00"	510'	12.77'	6.38'

BENCH MARK
 R.R. spike in PP #2458R
 @ S.E. corner La Sierra Ave and Collett Ave Sta F.B. 9781.5 Elev. 70+250

Irrigation Line Approval
 By Fred Kemp 4-5-77
 Facasetter Homes Inc. Data

ALBERT A. WEISS ASSOCIATES
 CIVIL ENGINEERS
 RIVERSIDE, CALIFORNIA
 APPROVED BY: [Signature] DATE: 4/1/77
 R.E. No. 2322
 No. 76101 FOR FACASSETTER HOMES INC. 10/1/77

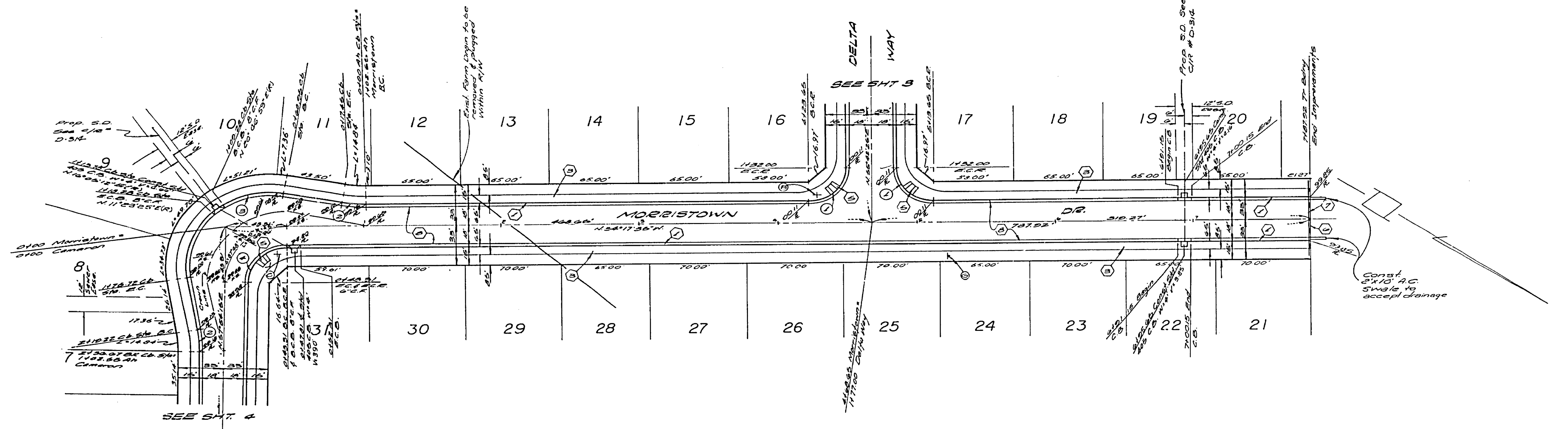
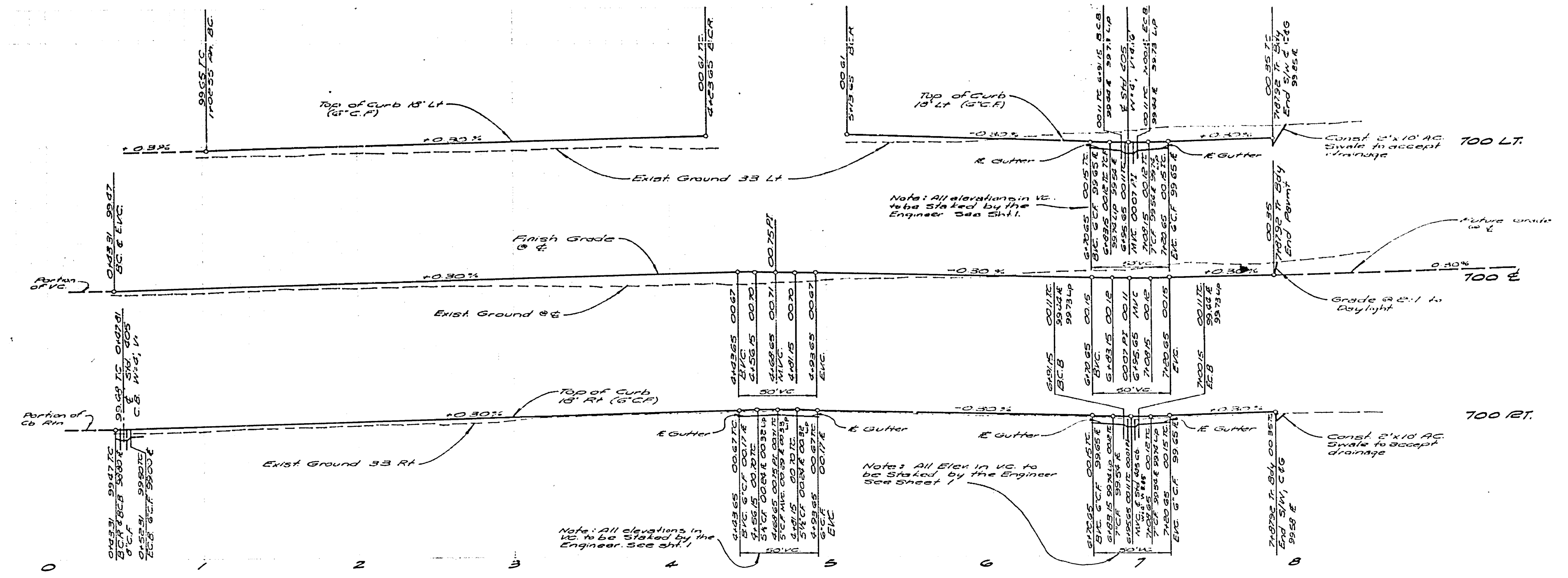
NO.	REVISIONS	APP.	DATE

CITY OF RIVERSIDE, CALIFORNIA
PUBLIC WORKS DEPARTMENT
 APPROVED BY: [Signature]
 DIRECTOR OF PUBLIC WORKS
 DATE: 5/26/77

STREET PLAN AND PROFILE
CAMERON DRIVE
TRACT NO. 6763-2
 SCALE: Horiz. 1"=40' Vert. 1"=4'

ACCOUNT NO. _____
 DRAWING NUMBER
R-1982
 SHEET **4** OF **6**
76101-A

700 LT
700 E
700 RT

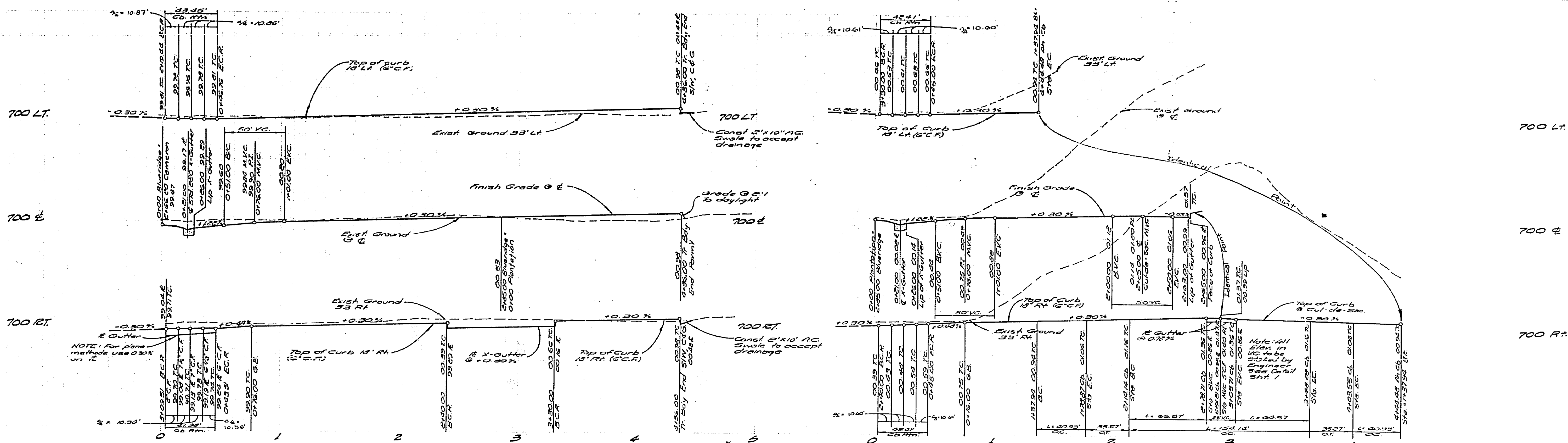


CURB CURVE DATA

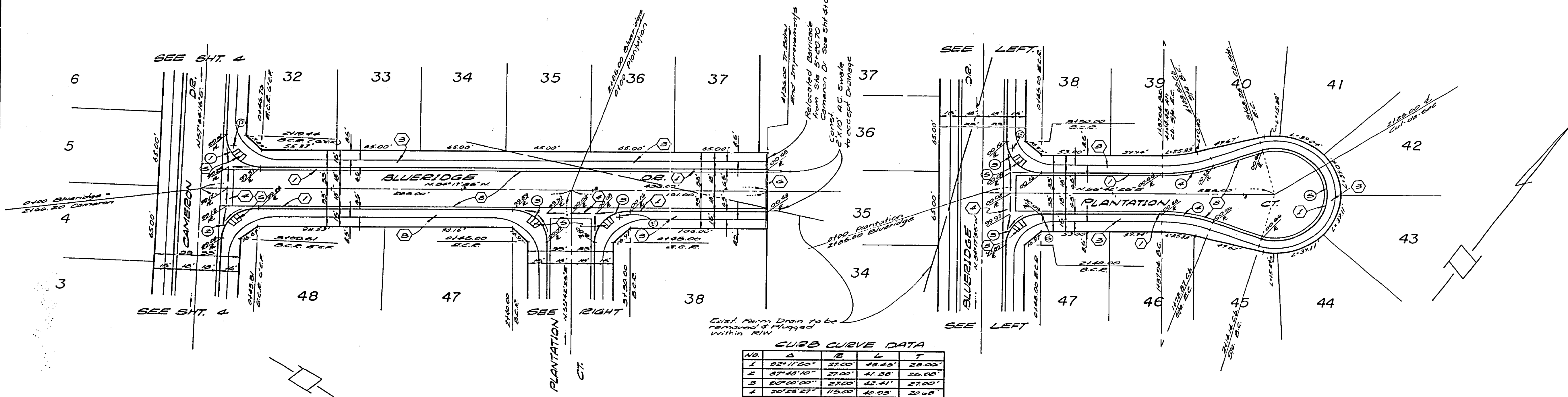
NO.	S	R	L	T
1	20°30'00"	2700'	22.71'	2700'
2	10°00'00"	10000'	17.45'	9.75'
3	107°48'10"	4100'	114.77'	83.44'
4	87°48'10"	2700'	41.38'	23.28'

BENCH MARK
RR spike in PP # 24539J
@ S.E. corner La Sierra
Ave and Collett Ave. 94
F.B. 979/5 Elev 704250

Irrigation Line Approval By <u>Frederic Knier</u> 4.5.77 For <u>Proccessther Water Inc</u>		CITY OF RIVERSIDE, CALIFORNIA PUBLIC WORKS DEPARTMENT		STREET PLAN AND PROFILE MORRISTOWN DRIVE TRACT NO. 6763-2		ACCOUNT No. R-1982
APPROVED BY: <u>[Signature]</u> DATE: <u>4/1/77</u> R.E. No. <u>0026</u>		APPROVED BY: <u>[Signature]</u> DATE: <u>5/26/77</u> DIRECTOR OF PUBLIC WORKS		SCALE: Horiz. - 1" = 40' Vert. - 1" = 4'		SHEET <u>5</u> OF <u>6</u> 76-101-A
W.D. 76-101 FOR PROCCESSTHER WATER INC.		DESIGNED BY: <u>[Signature]</u> DRAWN BY: <u>[Signature]</u> CHECKED BY: <u>[Signature]</u>		REVISIONS: _____ APPR. DATE: _____		



NOTE:
See Sheet 1 for General & Construction Notes



CURB CURVE DATA

No.	A	B	L	T
1	22°11'50"	37.00	49.45'	28.00'
2	27°45'10"	27.00	41.30'	25.00'
3	20°00'00"	27.00	42.41'	27.00'
4	25°23'27"	115.00	40.05'	22.00'
5	22°04'54"	40.00	124.12'	-

BENCH MARK
R.R. spike in RP# 24589J
@ SE corner La Sierra
Ave and Collett Ave Sp
FB 9745 Elev 704250

ALBERT A. WEBB ASSOCIATES
CIVIL ENGINEERS
RIVERSIDE, CALIFORNIA
APPROVED BY: *[Signature]* DATE: 4/1/77
R.E. No. 2872
W.076-101 for Pacesetter Homes F.B. 1032

Irrigation Line Approval
By: *[Signature]* Date: 4-5-77
Pacesetter Homes Inc.

CITY OF RIVERSIDE, CALIFORNIA
PUBLIC WORKS DEPARTMENT
APPROVED BY: *[Signature]* DATE: 5/26/77
TRAFFIC DIVISION
CHIEF PUBLIC WORKS ENGINEER

STREET PLAN AND PROFILE
BLUE RIDGE DRIVE
HAZELVILLE COURT
TRACT NO. 6763-2
SCALE: Horiz-1"=40' Vert-1"=4'

ACCOUNT No.
DRAWING NUMBER
R-1982
SHEET 6 OF 6
76-101-A