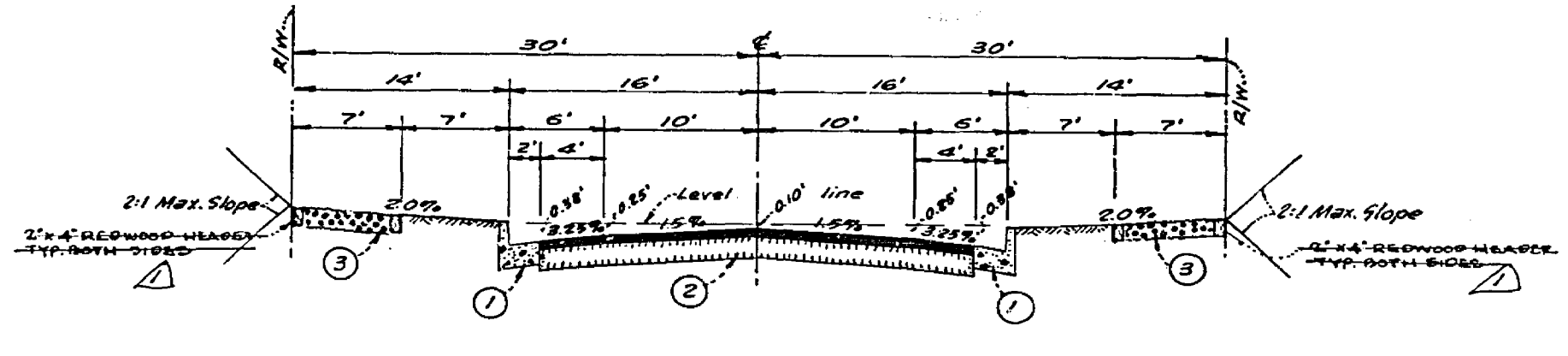
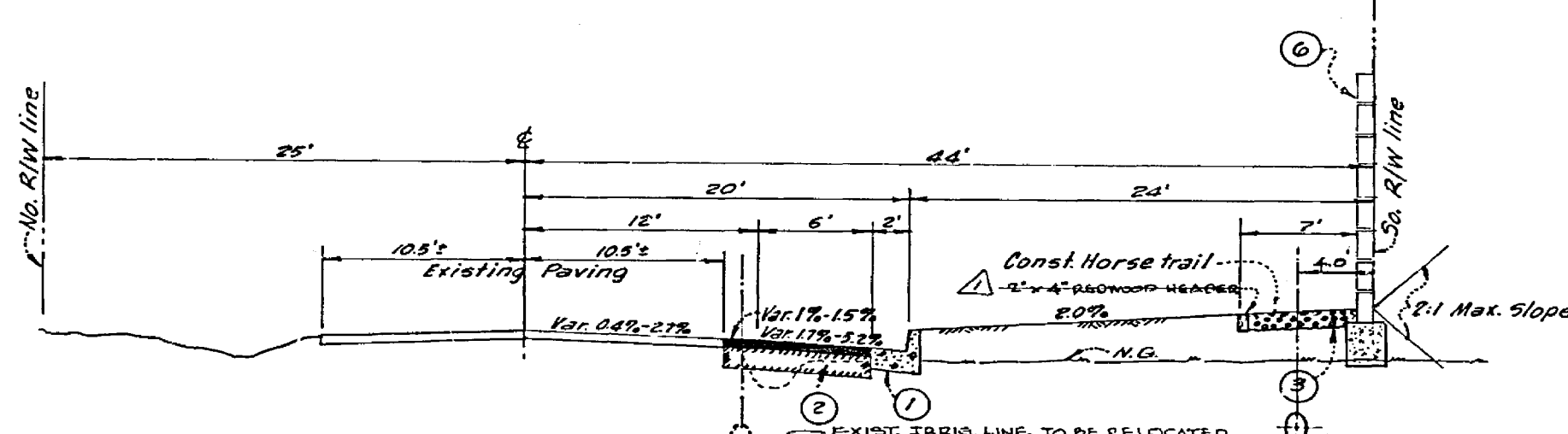


TYPICAL SECTION
HIGHRIDGE STREET
STA. 6+58.89 TO STA. 13+17.63
T.L. = 5



TYPICAL SECTION
RUTH WAY
T.L. = 5



TYPICAL SECTION
BRADLEY STREET
STA. 33+16.85 TO STA. 39+75.28
T.L. = 7

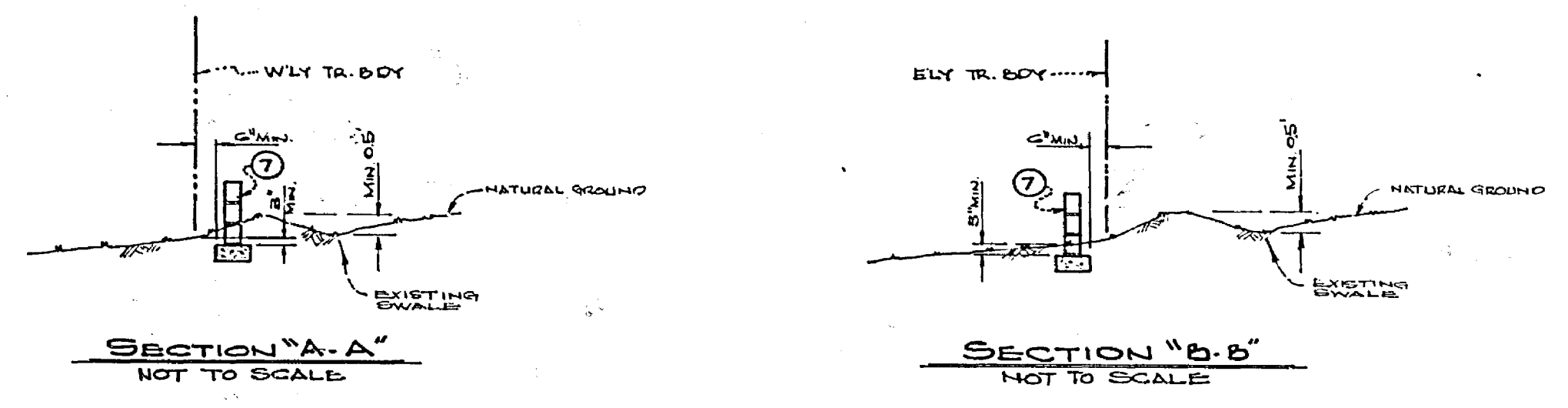
GENERAL NOTES:

1. The private engineer signing these plans is responsible for the accuracy and acceptability of the work hereon. In the event of discrepancies arising during construction the private engineer shall be responsible for determining an acceptable solution and revising the plans for the approval of the City.
2. It shall be the responsibility of the Contractor to clear the right of way in accordance with the provisions of law and it affects each utility including irrigation lines and appurtenances and at no cost to the City.
3. Construction shall be in accordance with the City of Riverside, Dept. of Public Works, Standard Drawings, and the Standard Specifications for Public Works Construction, 1976 Edition.
4. Construct driveway approaches per Std. Dwg. 302. Exact size and location to be determined at the time of construction as approved by the Traffic Engineer.
5. Curb and Gutter shall be staked with 3' offset at 25' intervals.
6. All traffic signs shall be installed prior to opening the streets for traffic.
7. The subdivider shall arrange for soils test to be made by a soils engineer after the streets have been prepared to rough grade. Depth of Base material and A.C. paving shall be determined by the City of Riverside design standards and test procedures.
8. See "Street Lighting Plans" for quantity and location of required street lights.
9. All flagged elevations shall be staked in the field by the private engineer.
10. All testing and certification of the treated base will be at the developers cost.

CONSTRUCTION NOTES:

- ① Construct R.C.C. Curb and Gutter per Riverside City Std. No. 200 (6" C.F.)
- ② Construct A.C. Pavement over D.G. Base or A.C. Pavement over compacted Native. (REFER TO GENERAL NOTE 7. THICKNESS TO BE INDICATED ON TYPICAL SECTION AFTER DETERMINATION)
- ③ Construct 6" Thick Decomposed Granite (D.G.) Equestrian trail, see Typical Sections
- ④ Construct R.C.C. Cross-Gutter per Riverside City Std. No. 220. W-10'
- ⑤ Construct Wheel Chair Ramp curb depression per Riverside City Std. No. 30d.
- ⑥ CONSTRUCT BLOCK WALL PER RIVERSIDE CITY STD. 704 - SEE LANDSCAPE & SPRINKLER PLAN FOR TYPE OF BLOCK, COLOR, ETC. ON WALL.
- ⑦ CONSTRUCT BLOCK WALL PER RIVERSIDE CITY STD. 704 - 0800 2" x 8" x 16" MASONRY INTERLOCKING BLOCK-HU FANNING MAY 2 CARVED HIGH - MIN. 1.0 ABOVE EXIST. GROUND SURFACE (SEE SECTIONS "A-A" AND "B-B")

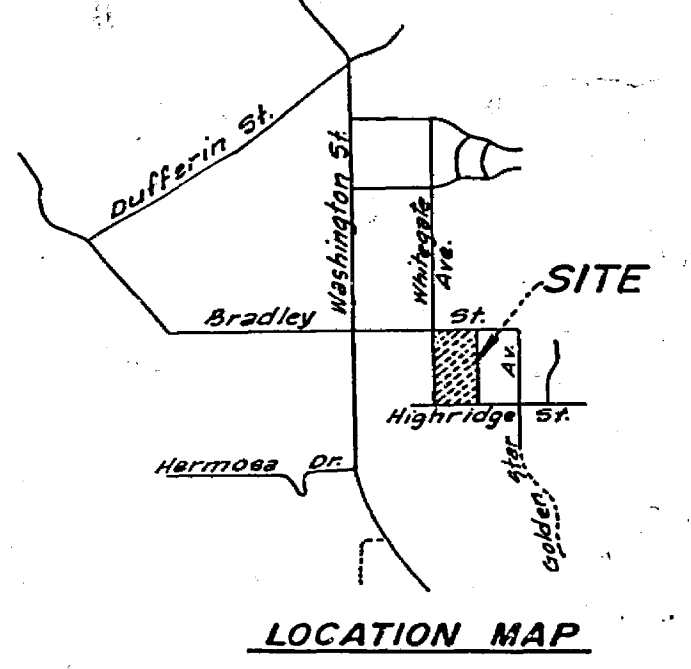
INDEX MAP



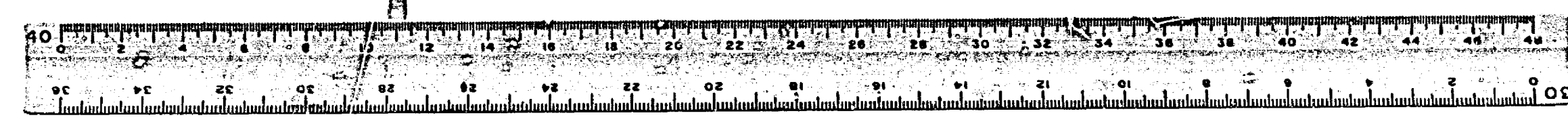
STREET NAME AND TRAFFIC SIGN SCHEDULE	
(A) BRADLEY ST.	1400
(B) RUTH WAY	7900
(C) HIGHRIDGE ST.	1400
(D) RUTH WAY	7900
(E) R1 (STOP SIGN) 30" OCTAGON	
(F) WBS (NOT A THROUGH STREET) 24" x 24"	

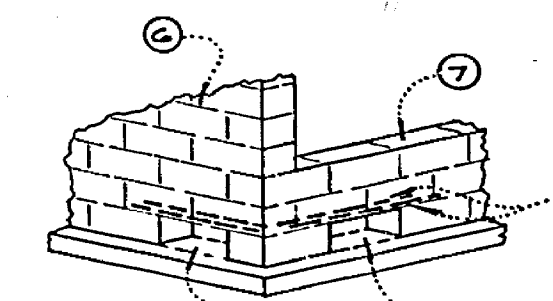
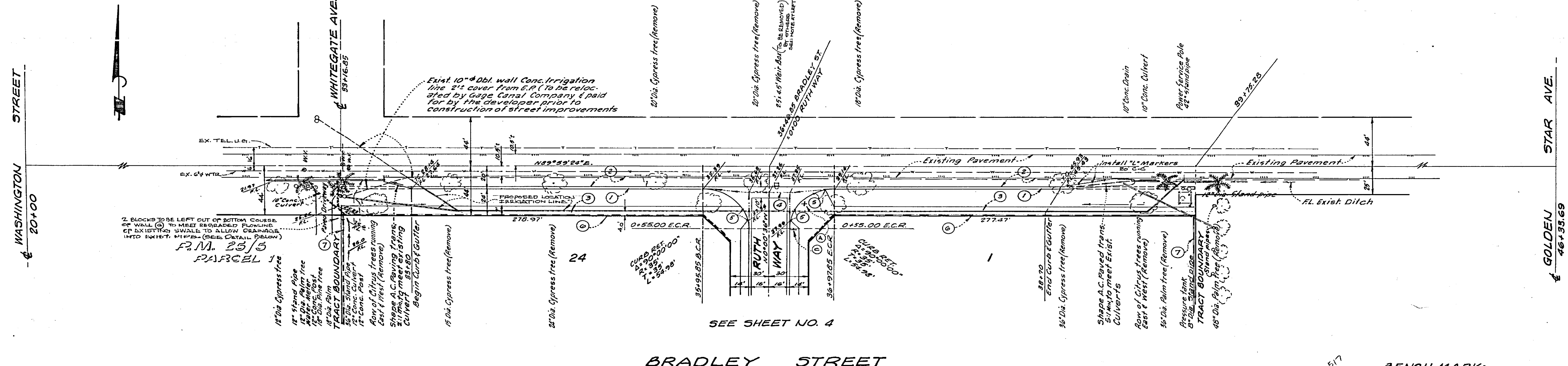
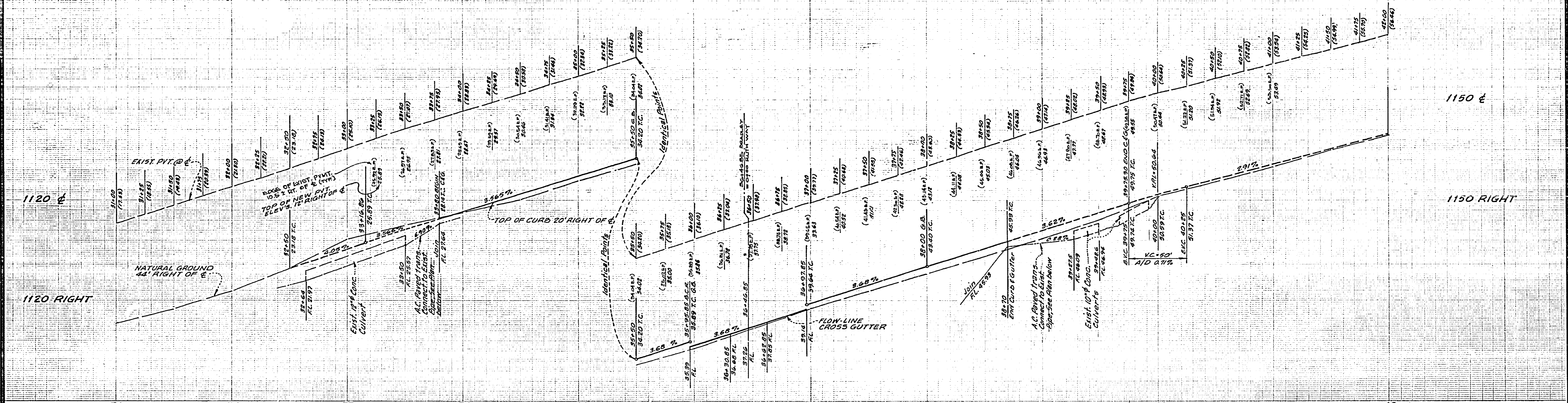
BENCH MARK:

City Bench Mark E-6-C, Yellow painted bolt on southside of pump station at Northwest corner of Washington St. and Bradley St. per F.B. 1034/142. Elevation = 1083.278



ALBERT A. WEBB ASSOCIATES CIVIL ENGINEERS RIVERSIDE, CALIFORNIA APPROVED BY: <i>[Signature]</i> DATE: 4/5/77 R.E. No. 2876 W.O. 76-581 FOR: NICK TAVAGLIONE F.B. 1034	CITY OF RIVERSIDE, CALIFORNIA PUBLIC WORKS DEPARTMENT APPROVED BY: <i>[Signature]</i> DATE: 7-1-77 CHIEF OF PUBLIC WORKS	STREET IMPROVEMENT PLAN TRACT NO. 8887 INDEX MAP	INDEXED P.P. ACCOUNT NO. DRAWING NUMBER R-1985 SHEET 1 OF 5 76-585 A
		SCALE: Horizontal 1"=40' Vertical 1"=4' DESIGNED BY: D.E.B. DRAWN BY: H.P. CHECKED BY:	





SEE SHEET NO. 4
BRADLEY STREET

517
BENCH MARK:
City Bench Mark E-6-C. Yellow painted Bolt on south side of pump station at Northwest corner of Washington St and Bradley St. per F.R. 1034/142. Elevation = 1083.873

WALL DETAIL - DRAINAGE OPENING
NOT TO SCALE
REFER TO PLAN VIEW ABOVE & INDEX MAP AND TYPICAL SECTIONS ON SHEET FOR LOCATION.

GAGE CANAL COMPANY
APPROVED: *[Signature]* DATE: 5/20/77

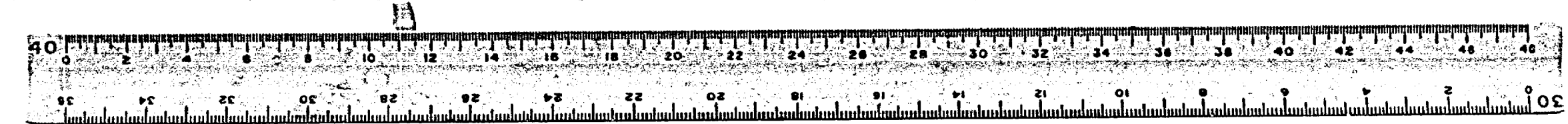
ALBERT A. WEBB ASSOCIATES
CIVIL ENGINEERS
RIVERSIDE, CALIFORNIA
APPROVED BY: *[Signature]* DATE: 4/5/77
R.E. No. 3276
W.G. 76-385 FOR: Nick Tavaglione F.R. 1034 DESIGNED BY: DRB DRAWN BY: WP CHECKED BY:

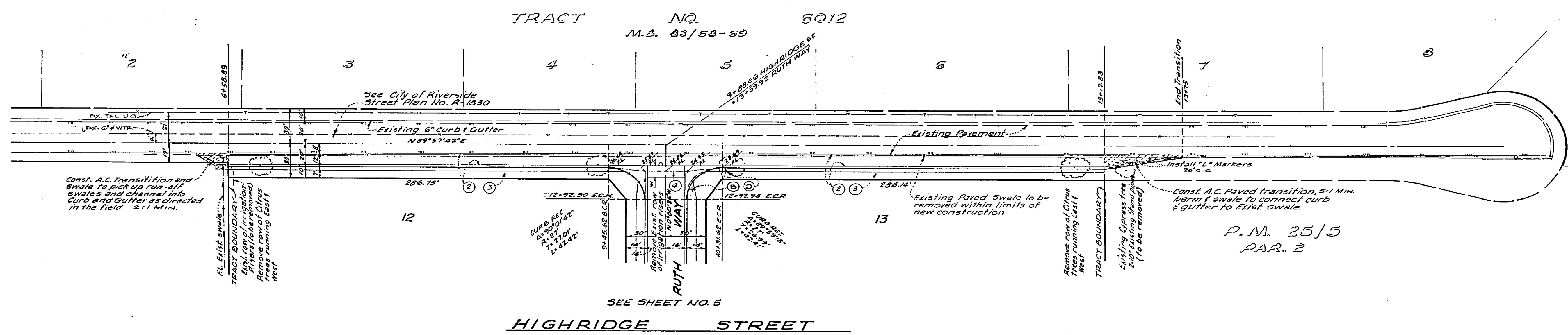
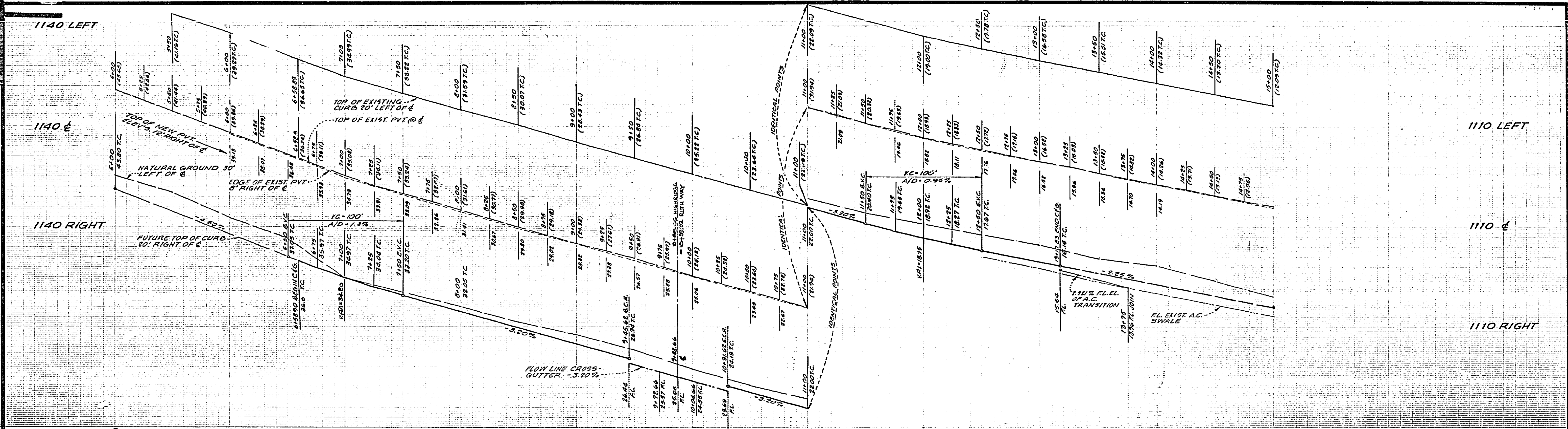
MARK	REVISIONS	APPR.	DATE

CITY OF RIVERSIDE, CALIFORNIA
PUBLIC WORKS DEPARTMENT
APPROVED BY: *[Signature]* BY DATE: 7/1/77
PRINCIPAL ENGINEER
PARK DEPARTMENT
TRAFFIC DIVISION
CHIEF CIVIL WORKS ENGINEER
PLANNING

* AS BUILT 4-6-81 (360)
STREET IMPROVEMENT PLAN
TRACT NO. 8887
BRADLEY STREET
SCALE: Horizontal 1"=40' Vertical 1"=4'
DATE: 7-1-77

INDEXED & R
ACCOUNT No.
DRAWING NUMBER
R-1985
SHEET 2 OF 5
76-385A



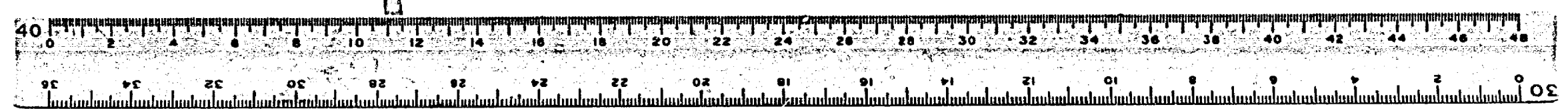


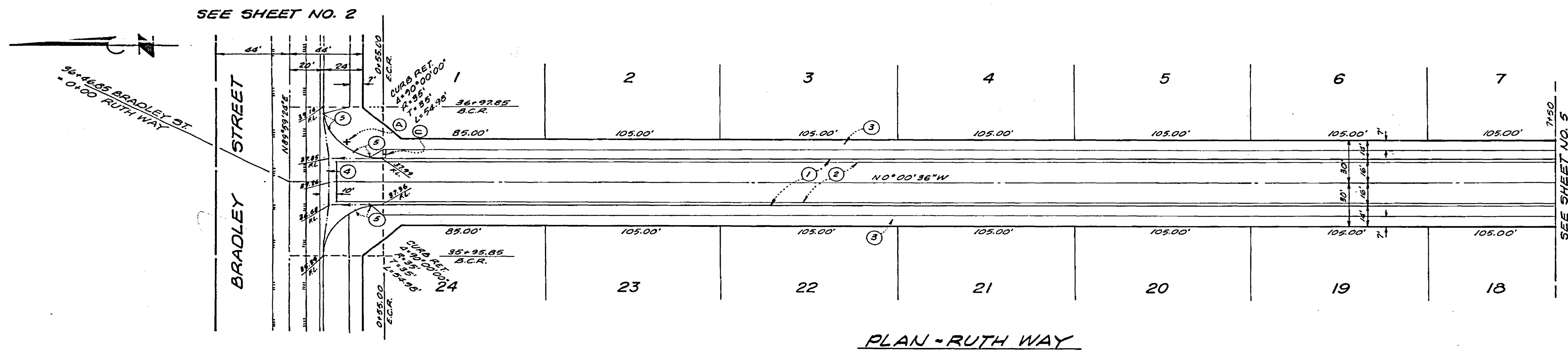
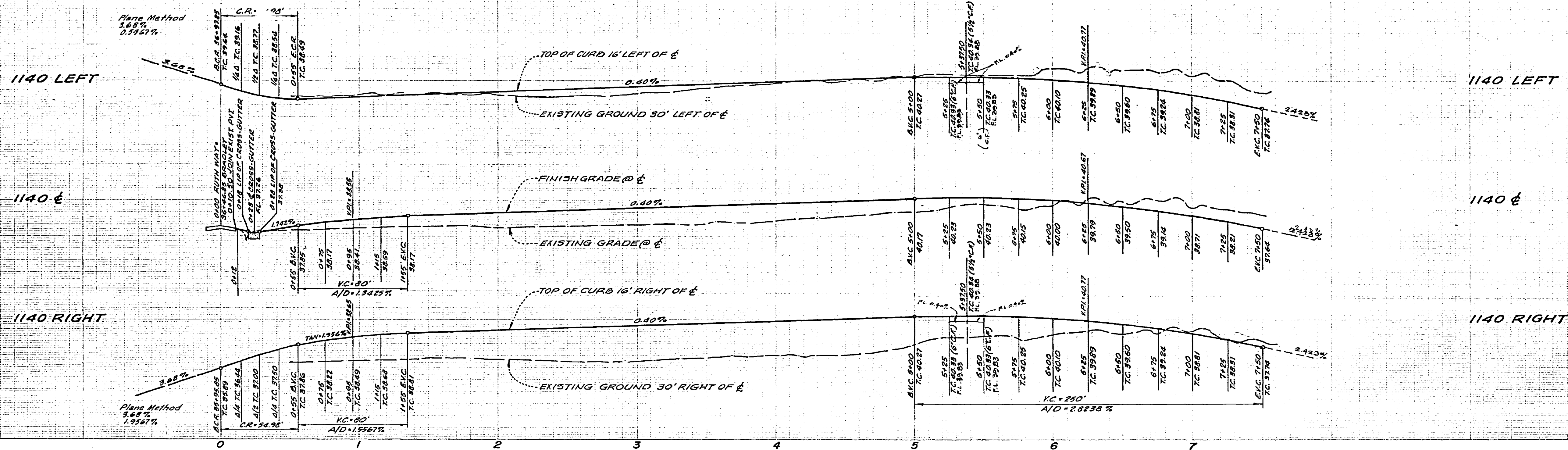
SEE SHEET NO. 5
HIGHRIDGE STREET

P.M. 25/5
 PAR. 2

BENCH MARK:
 City Bench Mark E-6-C. Yellow painted
 Bolt on south side of pump station
 at Northwest corner of Washington
 St. and Bradley St. per F.D. 1034/142.
 Elevation = 1083.278

ALBERT A. WEBB ASSOCIATES CIVIL ENGINEERS RIVERSIDE, CALIFORNIA APPROVED BY <i>[Signature]</i> DATE 4/5/77 R.E. No. 2872 W.O. 76-195 FOR: Nick Favaglione F.B. 1034	REVISIONS MARK APPR. DATE	CITY OF RIVERSIDE, CALIFORNIA PUBLIC WORKS DEPARTMENT		AS BUILT 4-6-81 <i>[initials]</i>	INDEXED R.R.
		APPROVED BY <i>[Signature]</i> PRINCIPAL ENGINEER PARK DEPARTMENT	APPROVED BY <i>[Signature]</i> DIRECTOR OF PUBLIC WORKS	STREET IMPROVEMENT PLAN TRACT NO. 8887 HIGHRIDGE STREET	ACCOUNT No. DRAWING NUMBER R-1985 SHEET 3 OF 5 76-385 A

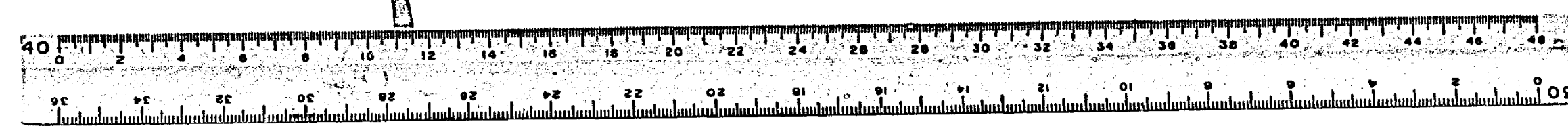




PLAN - RUTH WAY

BENCH MARK:
 City Bench Mark E-6-C Yellow painted
 Bolt on south side of pump station
 at Northwest corner of Washington
 St. and Bradley St. per F.B. 1034/142
 Elevation = 1083.278

ALBERT A. WEBB ASSOCIATES CIVIL ENGINEERS RIVERSIDE, CALIFORNIA APPROVED BY: <i>[Signature]</i> DATE: 4/5/77 R.E. No. 2676		CITY OF RIVERSIDE, CALIFORNIA PUBLIC WORKS DEPARTMENT APPROVED BY: <i>[Signature]</i> DATE: 7-4-77 DIRECTOR OF PUBLIC WORKS		STREET IMPROVEMENT PLAN TRACT NO. 8887 RUTH WAY	ACCOUNT No. DRAWING NUMBER R-1985 SHEET 4 OF 5
W.D. 76-385 FOR: Nick Tagliore F.B. 1034		DESIGNED BY: <i>[Signature]</i> DRAWN BY: <i>[Signature]</i> CHECKED BY: <i>[Signature]</i>		SCALE: Horizontal 1"=40' Vertical 1"=4' DATE: 7-4-77	



1040 LEFT

1040 E

1040 RIGHT

1030 LEFT

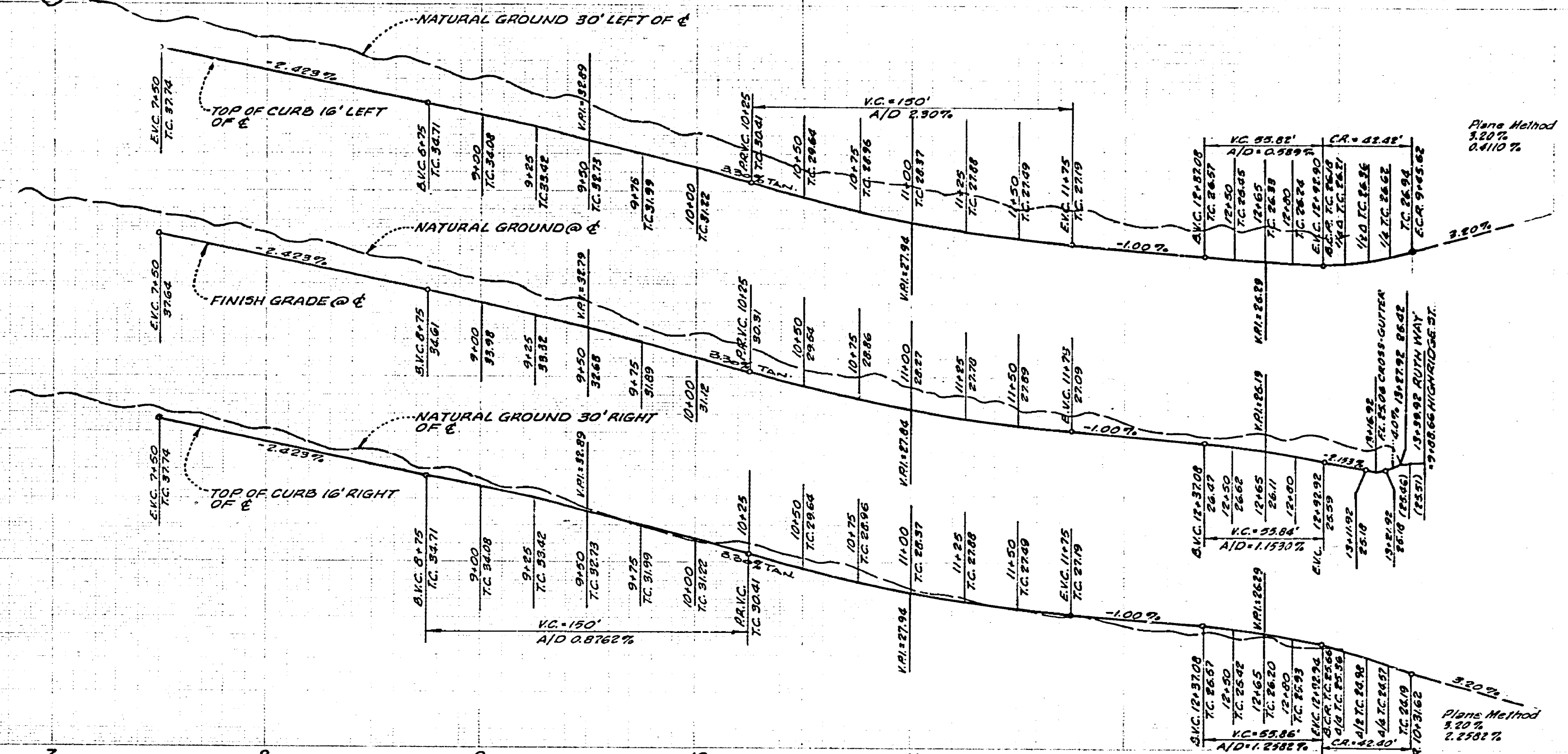
1025 LEFT

1030 E

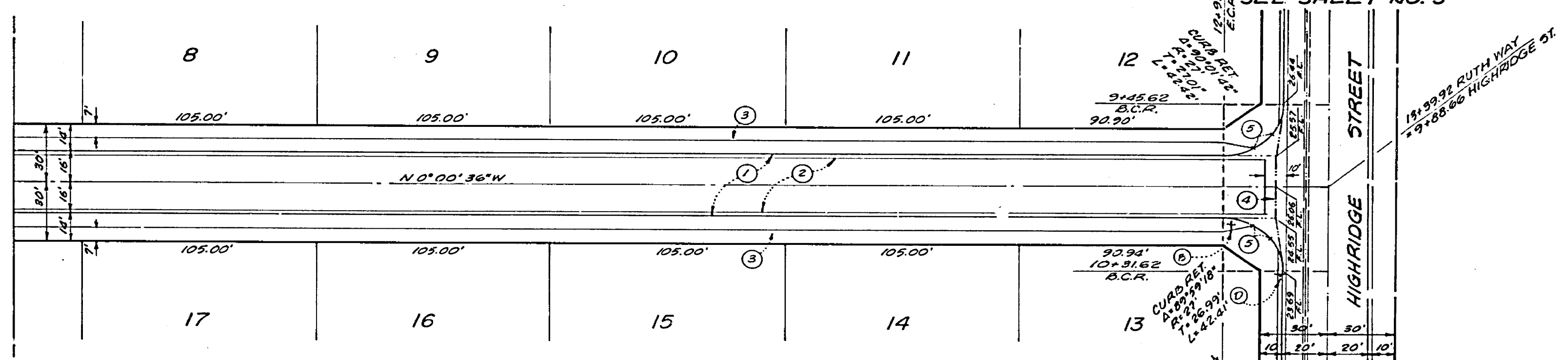
1025 E

1030 RIGHT

1025 RIGHT



SEE SHEET NO. 4



PLAN - RUTH WAY

BENCH MARK:
 City Bench Mark E-6-C. Yellow painted
 Bolt on south side of pump station
 at Northwest corner of Washington
 St and Bradley St per R.B. 1034/142.
 Elevation = 1083.278

ALBERT A. WEBB ASSOCIATES CIVIL ENGINEERS RIVERSIDE, CALIFORNIA APPROVED BY: <i>R. J. Webb</i> DATE: 4/5/77 R.E. No. 2472 W.O. 2-185 FOR: Nick Tavaglione F.B. 1034		* AS BUILT 4-6-81 Bof CITY OF RIVERSIDE, CALIFORNIA PUBLIC WORKS DEPARTMENT APPROVED BY: <i>[Signature]</i> DATE: 7-11-77 TRAFFIC DIVISION CHIEF PUB. WKS. ENGR.		STREET IMPROVEMENT PLAN TRACT NO. 8887 RUTH WAY SCALE: Horizontal 1"=40' Vertical 1"=4' ACCOUNT No. _____ DRAWING NUMBER R-1985 SHEET 5 OF 5 76-385A	
DESIGNED BY: D.S.G. DRAWN BY: W.P. CHECKED BY: _____		REVISIONS MARK DATE		DATE: 7-11-77	

