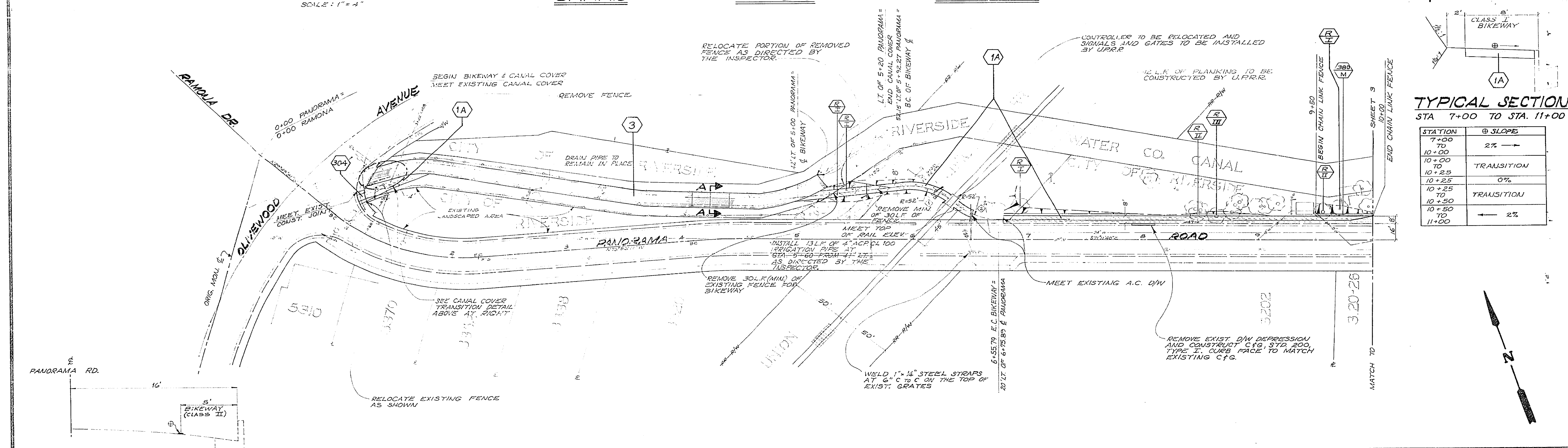


FB - 1007/30
ELEV - 868.690
B.M. - PK. NAIL IN CB. RET.
@ PANORAMA & OLIVEWOOD
PER PLAN R-1176 &
R-1431 & FB 131/42
(NOT PRECISE DATUM)

TYPICAL SECTION
STA 7+00 TO STA 11+00

STATION	TO	SLOPE
7+00	10+00	2% →
10+00	10+25	TRANSITION
10+25	10+50	0%
10+50	11+00	TRANSITION
11+00		2% ←



TYPICAL SECTION (STRIPING)
STA. 1+20 TO STA. 11+00
NTS

CURVE DATA

INDEX	R	Δ	T	L
1	52'	46°01'23"	22.08'	41.77'
2	52'	39°44'45"	18.80'	36.07'

ADDED TYR SECTION (STRIPING)

INDEX	DESCRIPTION	DATE

CITY OF RIVERSIDE
PUBLIC WORKS DEPARTMENT

APPROVED BY: [Signature]

DATE: 3/4/80

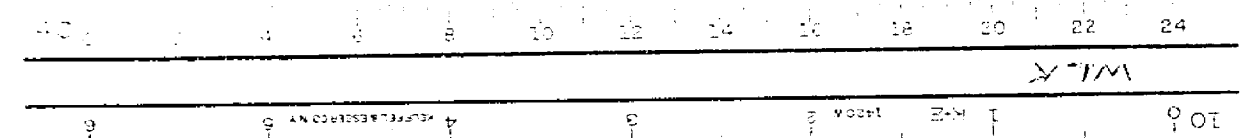
Panorama Rd to Victoria Ave.
Bikeway
Olivewood Ave. to Victoria Ave.
(Central Riverside Commuter Bikeway)

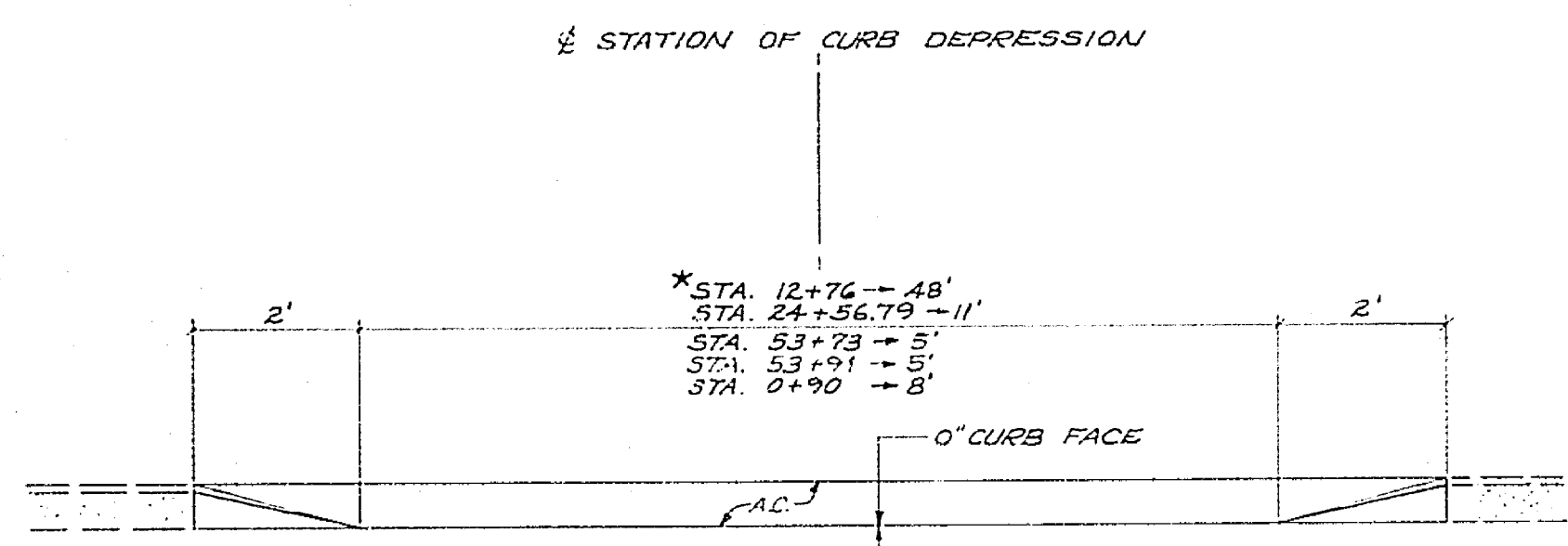
ACCOUNT NO. 30-575-227-09

R-2003

SHEET 2 OF 6

FILE NO.

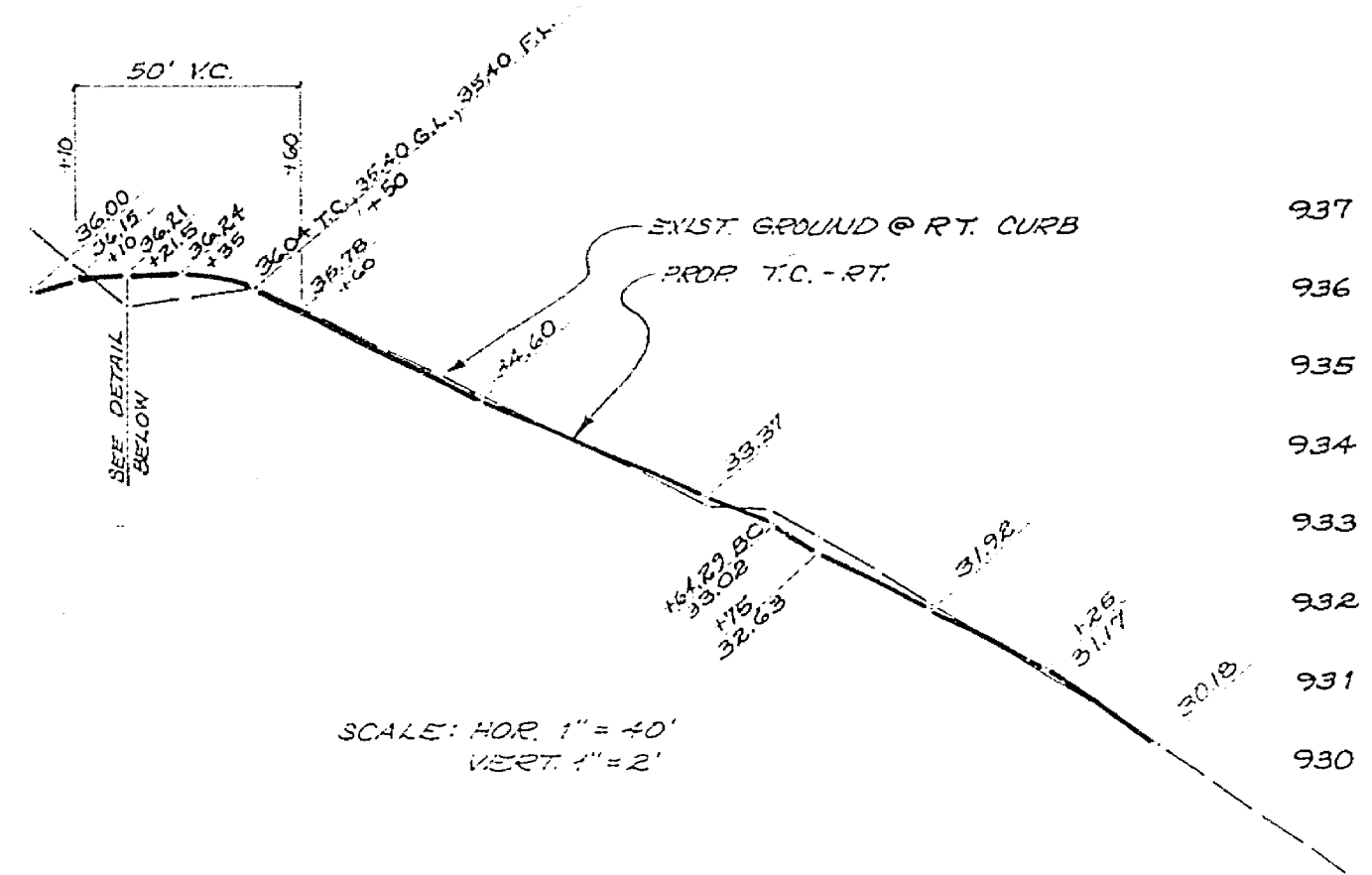




CURB DEPRESSION DETAIL

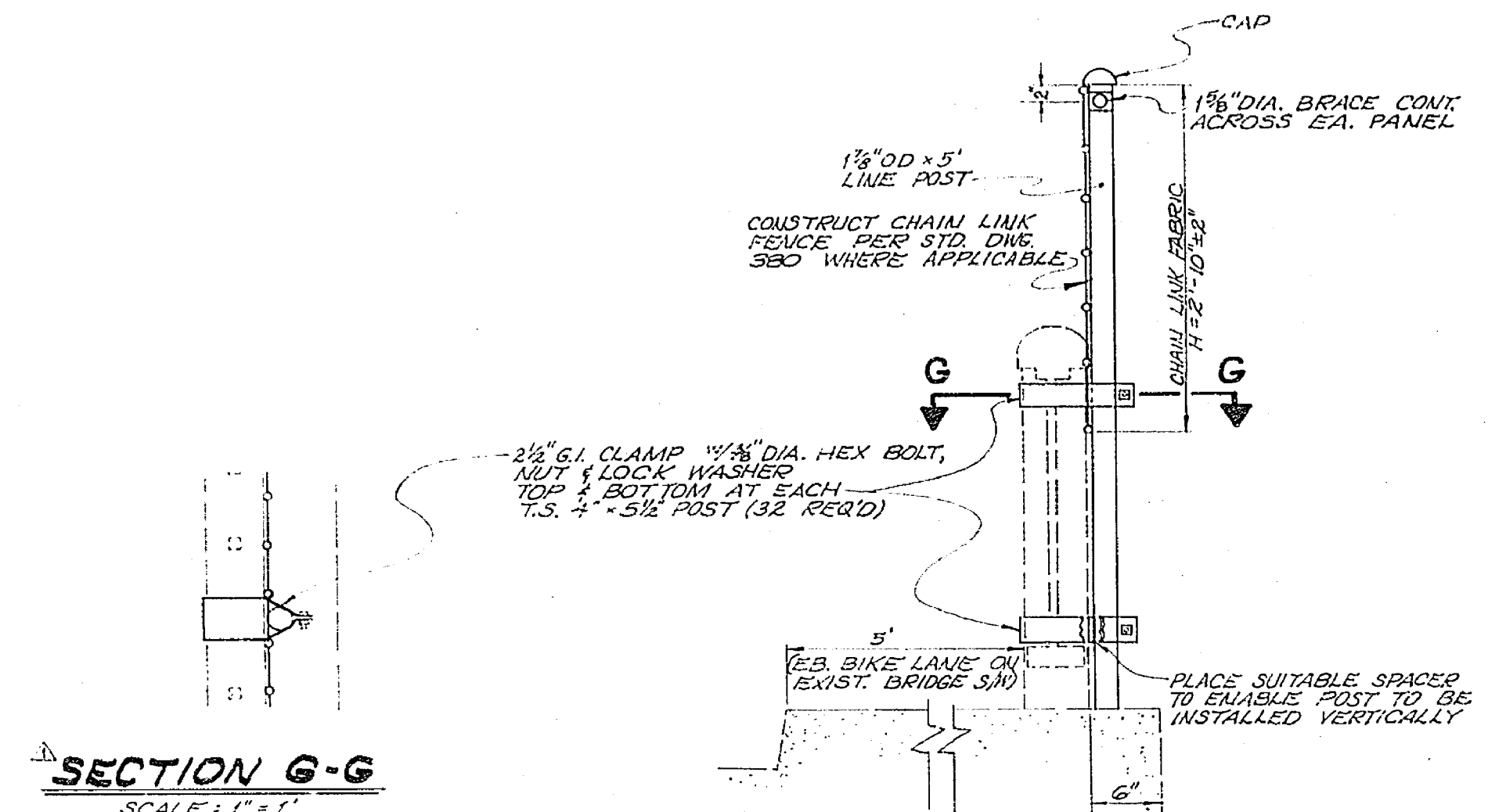
SCALE: 1" = 2'

*STA. 12+76 - RECONSTRUCT WINGS AND CURB BELOW BIKEWAY GRADE WITH F.C.C. TO MATCH EXISTING STD. 200, TYPE II



RIGHT CURB PROFILE

SCALE: HOR. 1" = 40'
VERT. 1" = 2'



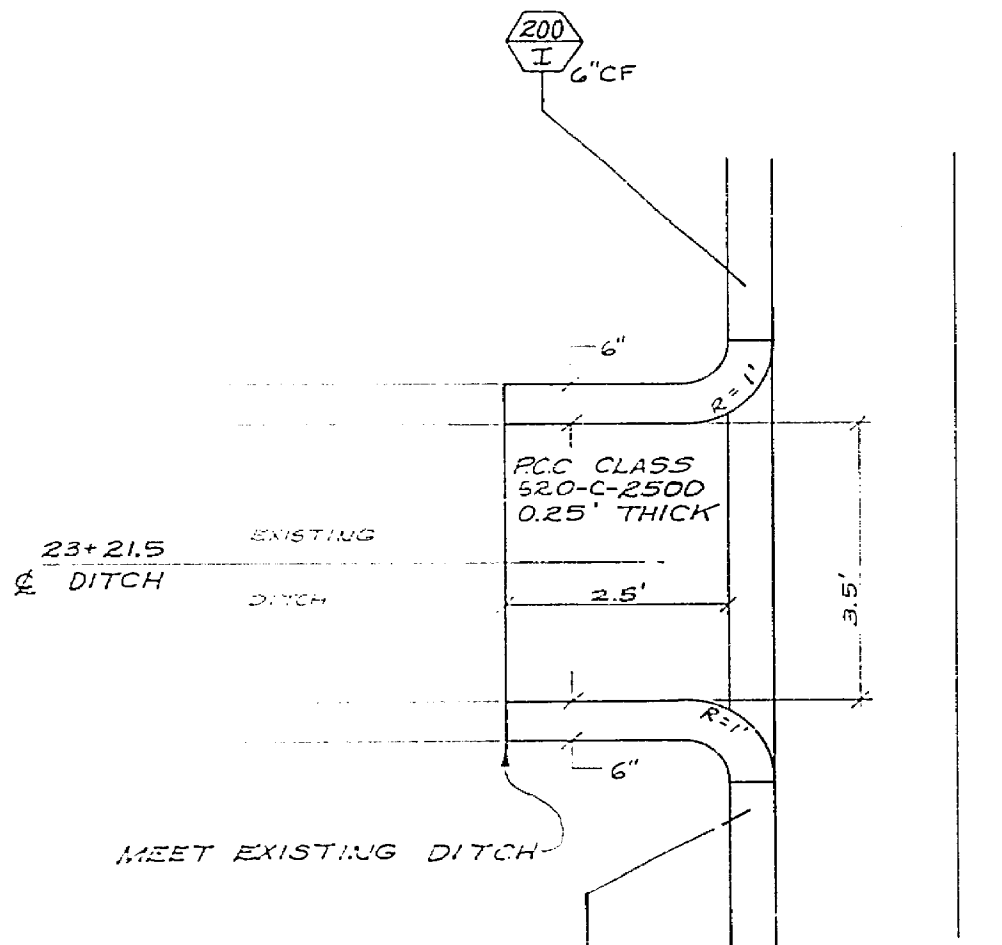
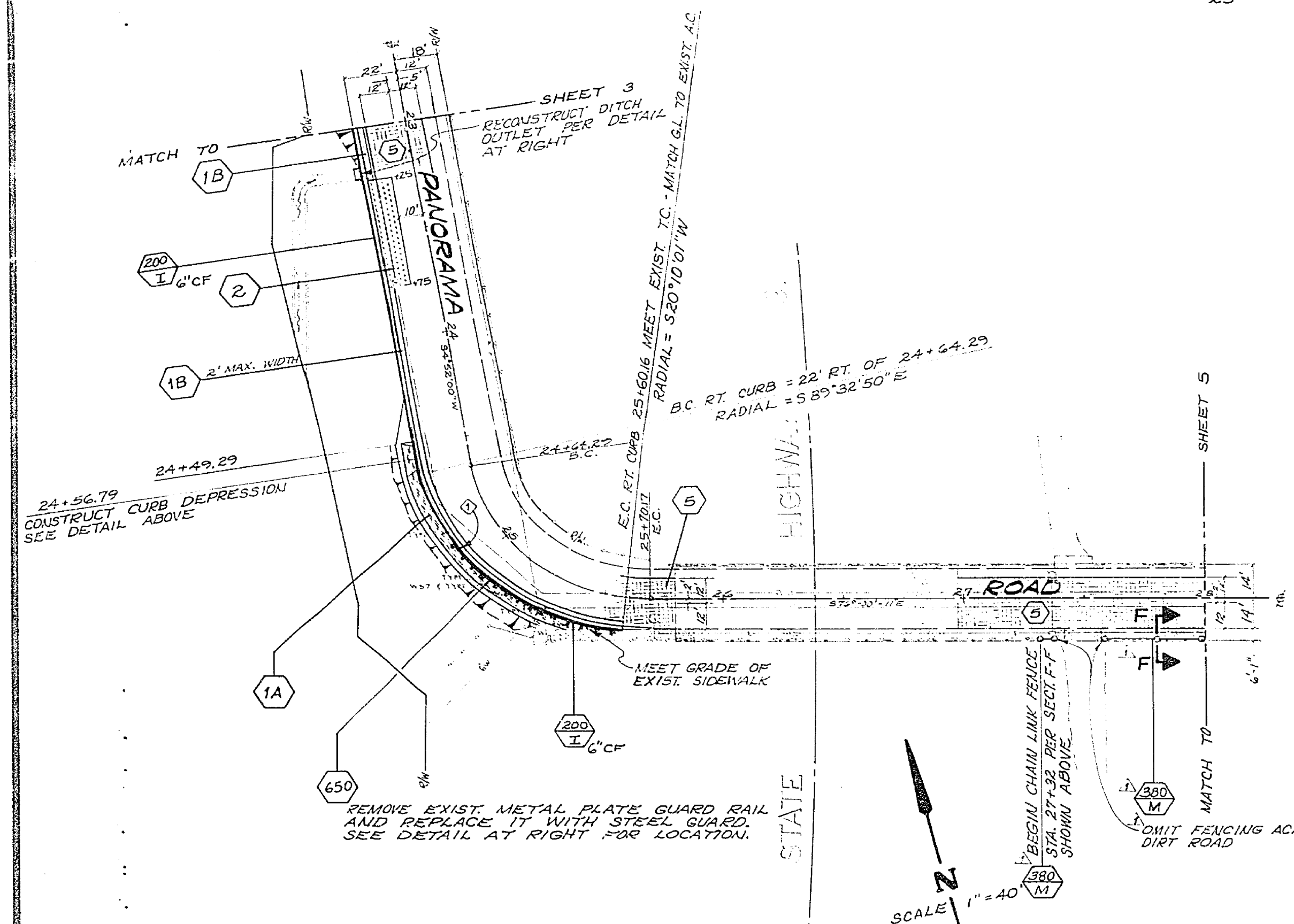
SECTION G-G

SCALE: 1" = 1'

SECTION F-F
CHAIN LINK FENCE MOUNTED ON EXIST. BRIDGE RAILING

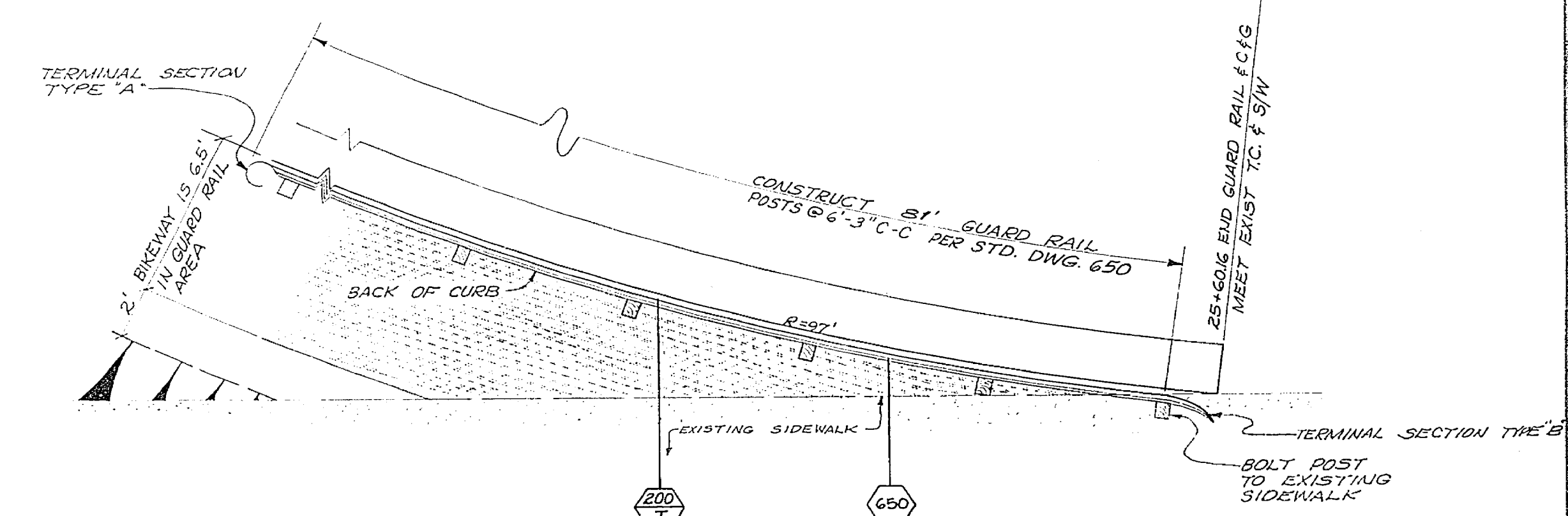
SCALE: 1" = 1'

FB - 1007/30
ELEV - 968.690
B.M. - PK. NAIL IN CB. RET.
@ RAMONA & ELMWOOD
PER PLAN R-1176, R-1431
& FILE 731/12
(NOT PRECISE DATUM)



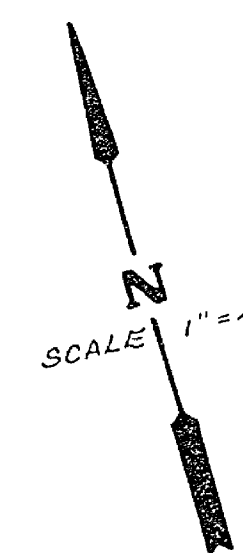
DITCH OUTLET DETAIL

SCALE: 1" = 2'



GUARD RAIL LOCATION DETAIL

SCALE: 1" = 4'



CURVE DATA				
INDEX	R	Δ	T	L
1	97'	68°44'25"	66.34'	116.38'

ADDED CHAIN LINK FENCE
STA. 27+32 TO STA. 28+85

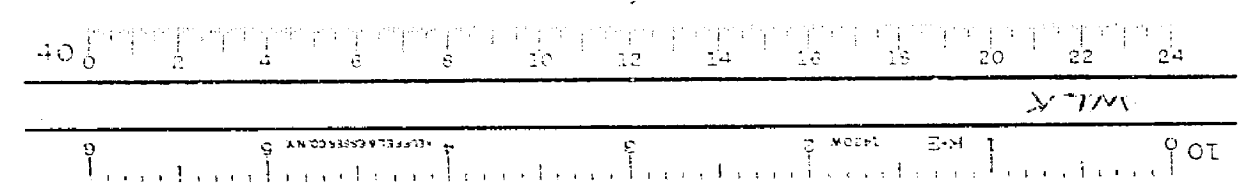
CITY OF RIVERSIDE
PUBLIC WORKS DEPARTMENT

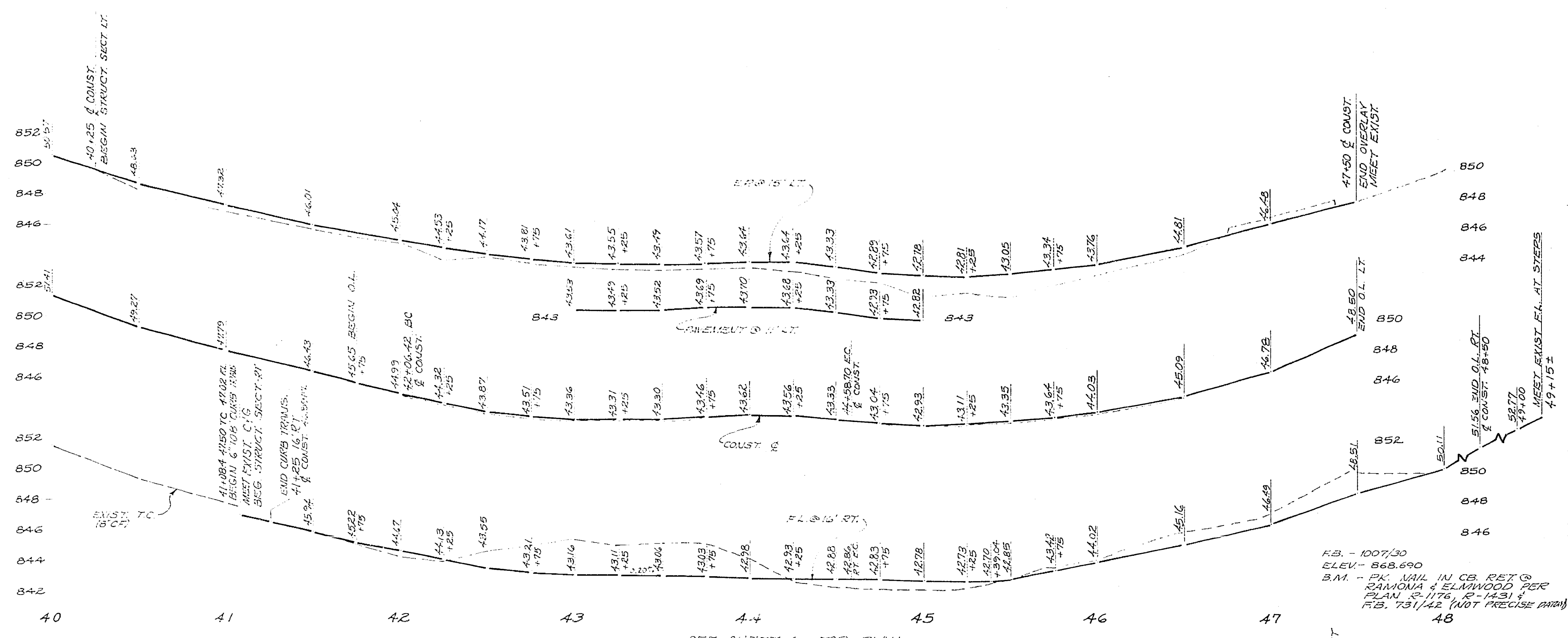
Panorama Rd. Ivy St.
Bikeway
Olivewood Ave. to Victoria Ave.
(Central Riverside Commuter Bikeway)

R-2003

SHEET 4 OF 6

FILE NO.





RELOCATE EXIST. ELECTROUIER TO NEW FOUNDATION ADJACENT TO BACK OF 3'W PER ITEM 3-2 OF STD. DIV. JCS-801 IN SPEC. 119 & DETAIL 'A' BELOW ON EXIST. FOUNDATION WITH CONCRETE.

EXIST. DIV. APPROACH

EXIST. LOCATION OF ST. LT.

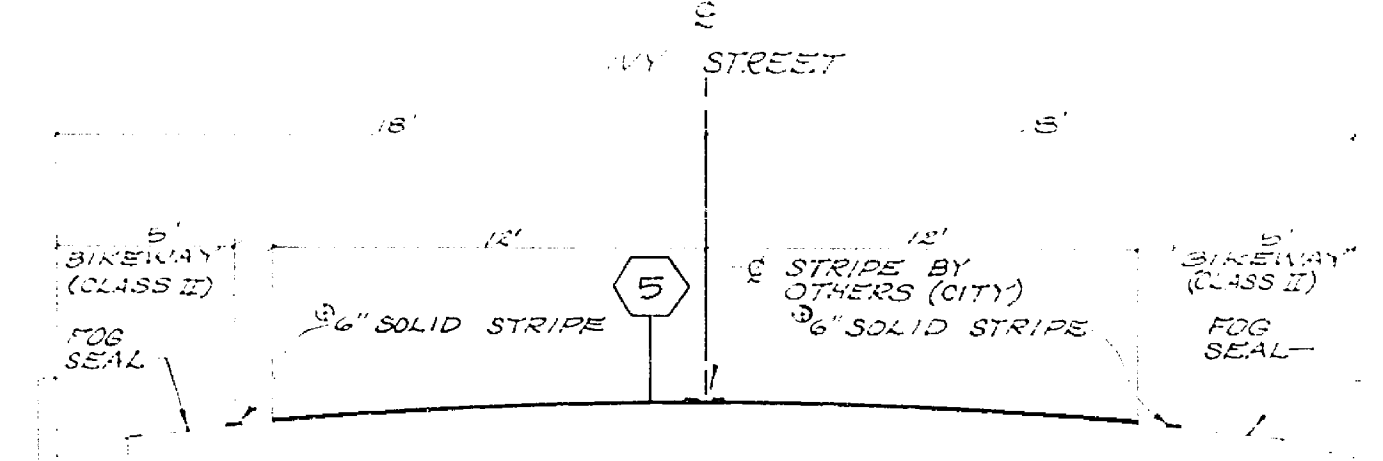
EXIST. ST. LT. CONDUIT 2"Ø 600V CABLES

EXIST. PULL BOX

PROPOSED LOCATION OF ST. LT.

INSTALL 1" RIGID GALV. STEEL CONDUIT WITH 2"Ø CU. 600V CABLES

DETAIL "A"
SCALE: 1" = 10'



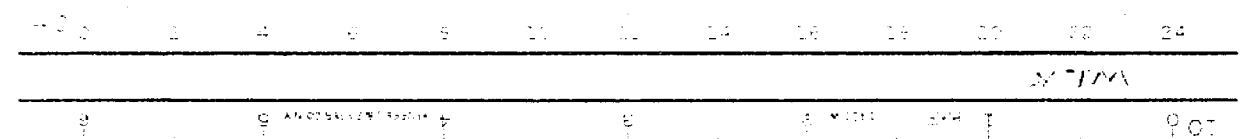
BY OTHERS (CITY)
TYPICAL SECTION
STA. 29+50 TO STA. 39+54.23
SCALE: HORIZ. 1" = 5', VERT. 1" = 1'

ADDED CHAIN LINK FENCE
STA. 27+32 TO 28+25

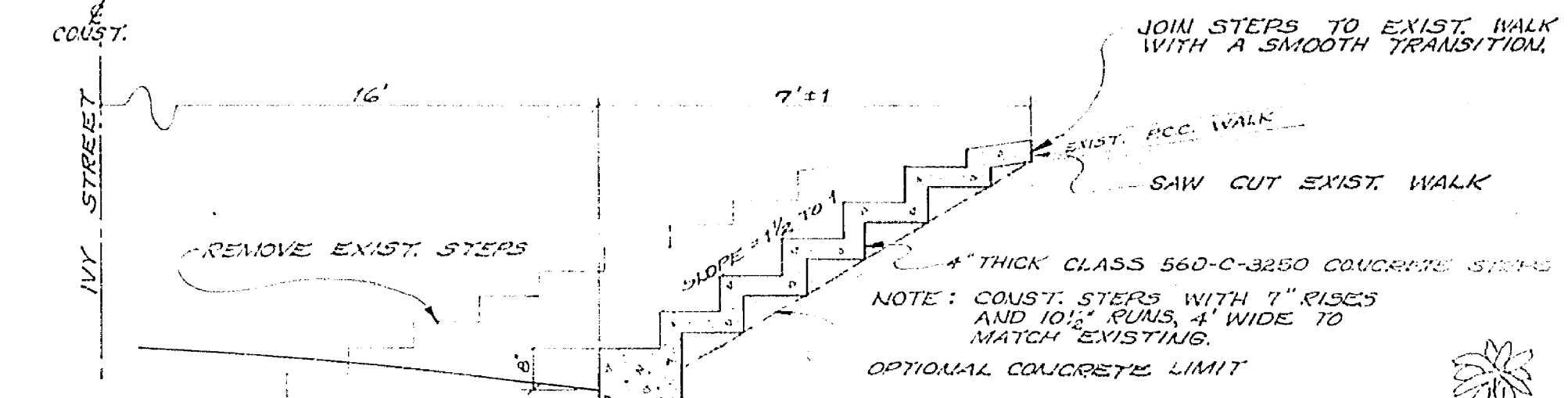
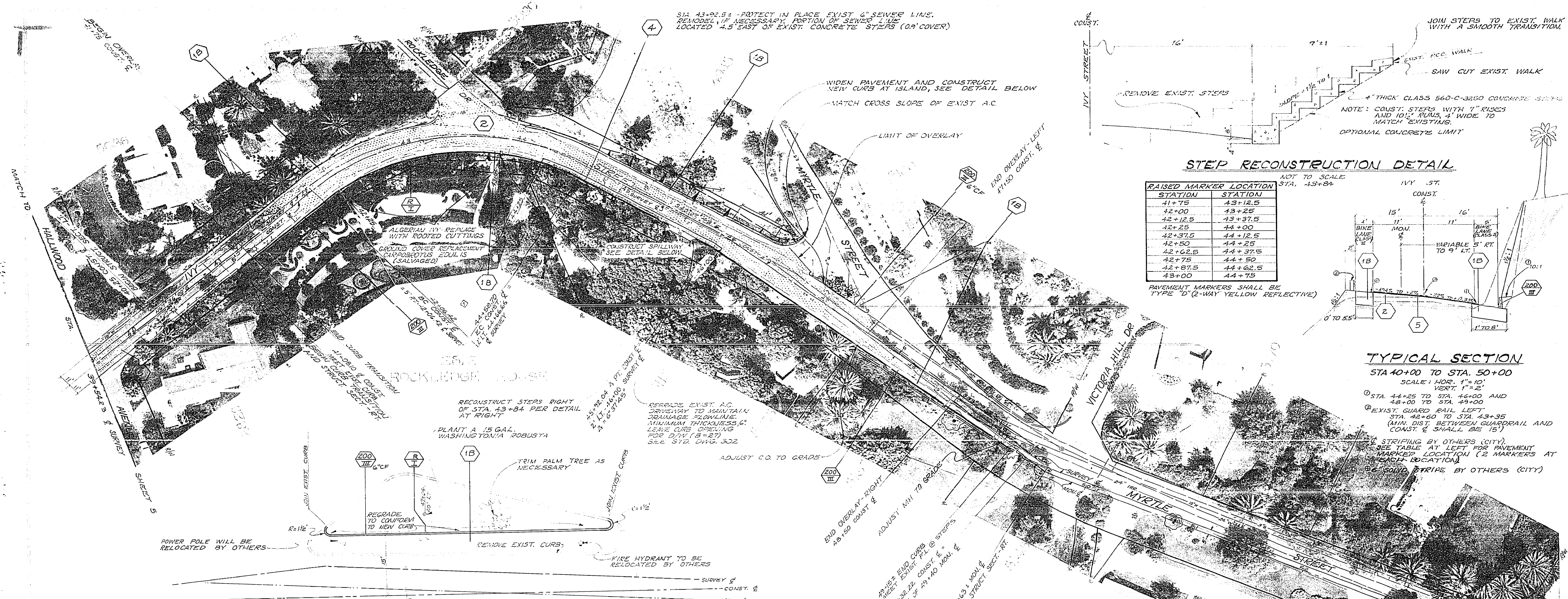
NOTE: PLAN VIEW ON THIS SHEET IS FOR STREET LIGHT RELOCATION AND OPEN GRADED A.C. PLACEMENT.

Panorama Rd. Irvy St.
Bikeway
Olivewood Ave. to Victoria Ave.
(Central Riverside Commuter Bikeway)

R-2003



30-575-227-04

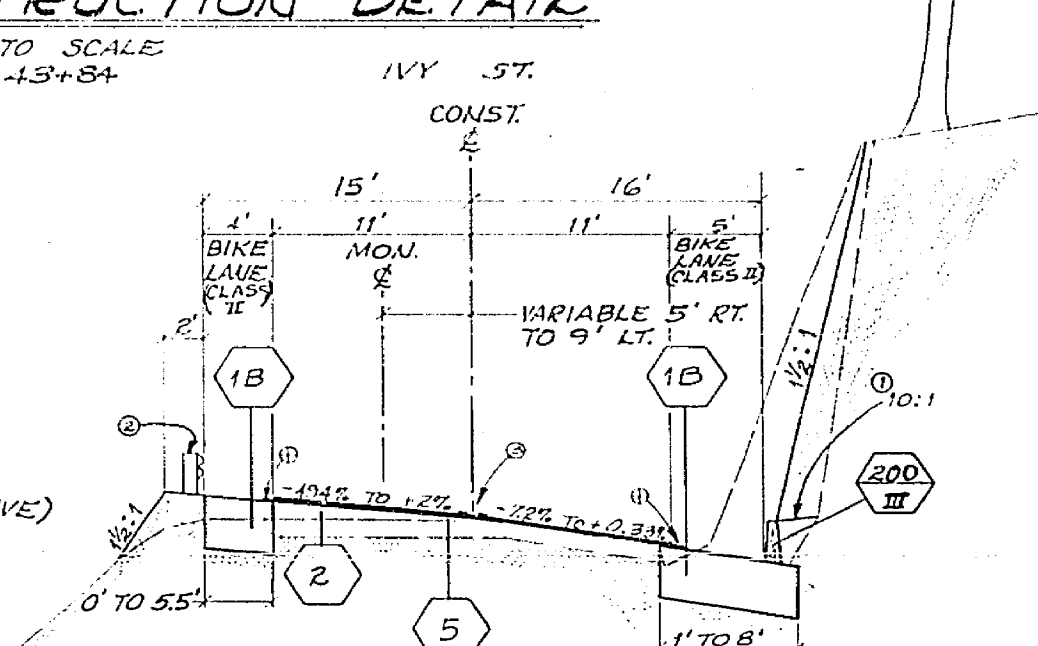


STEP RECONSTRUCTION DETAIL

NOT TO SCALE
STA. 43+84

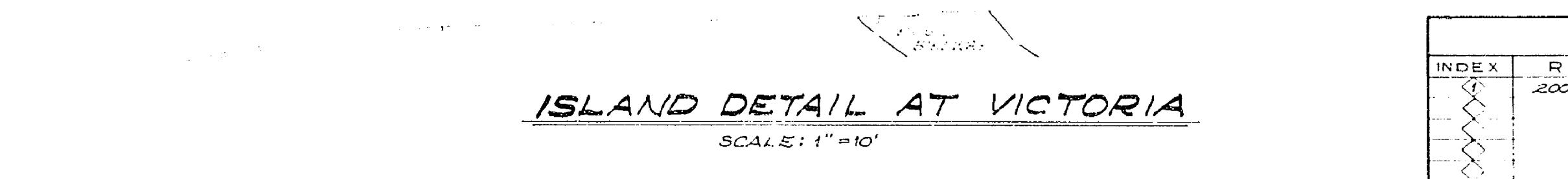
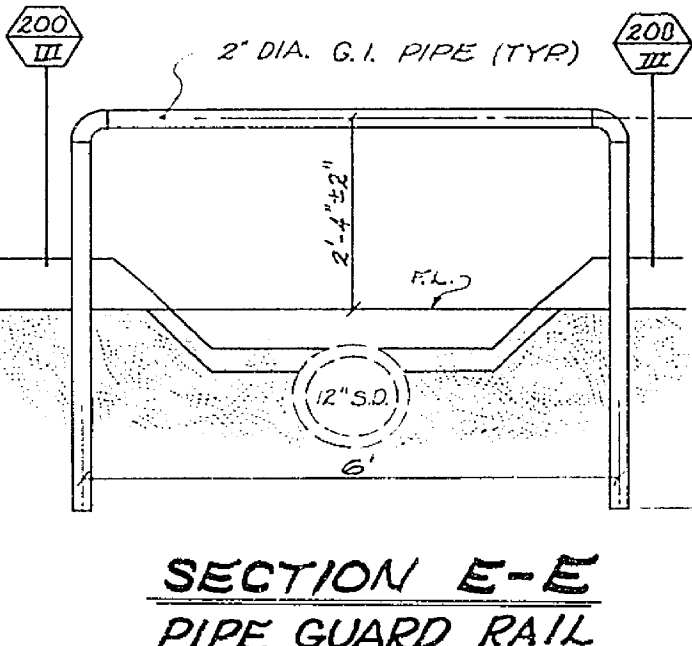
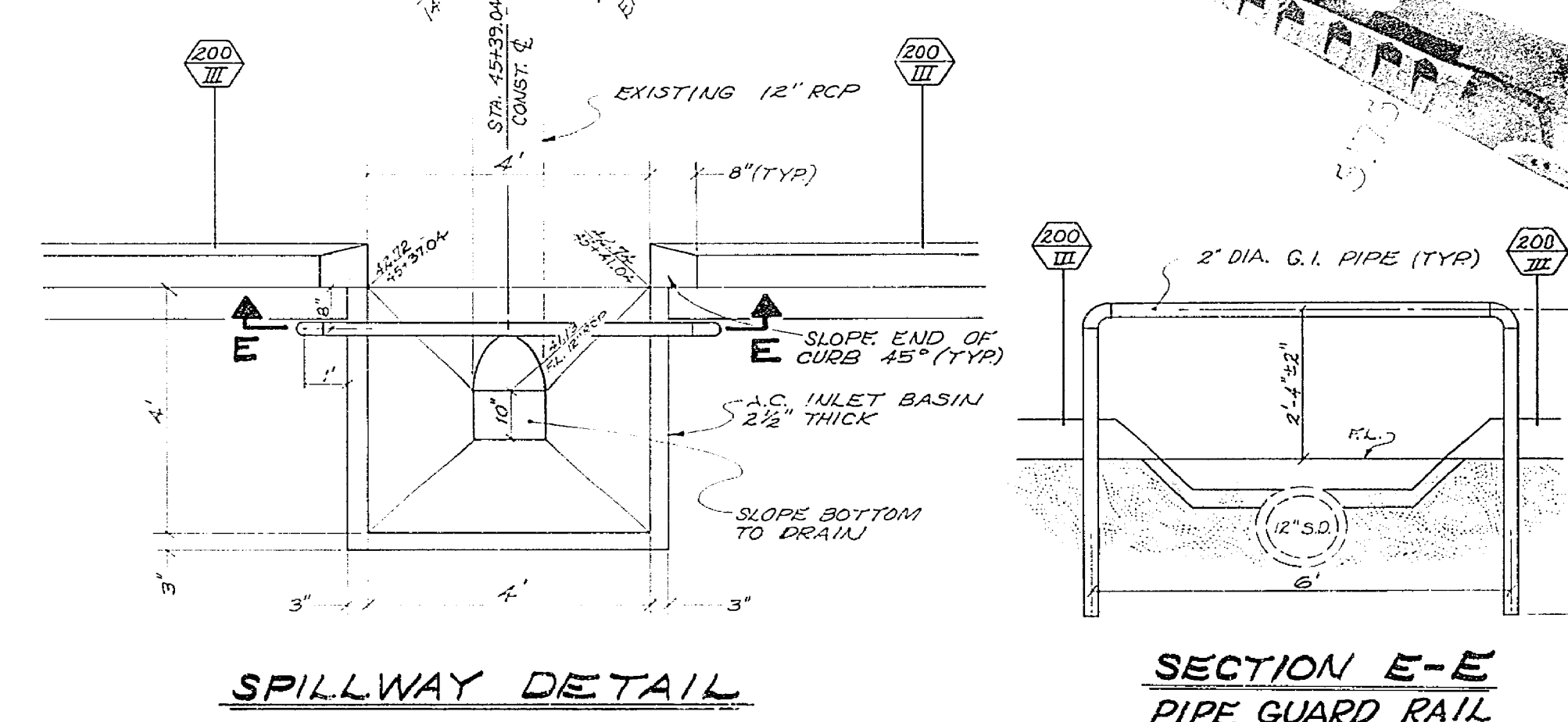
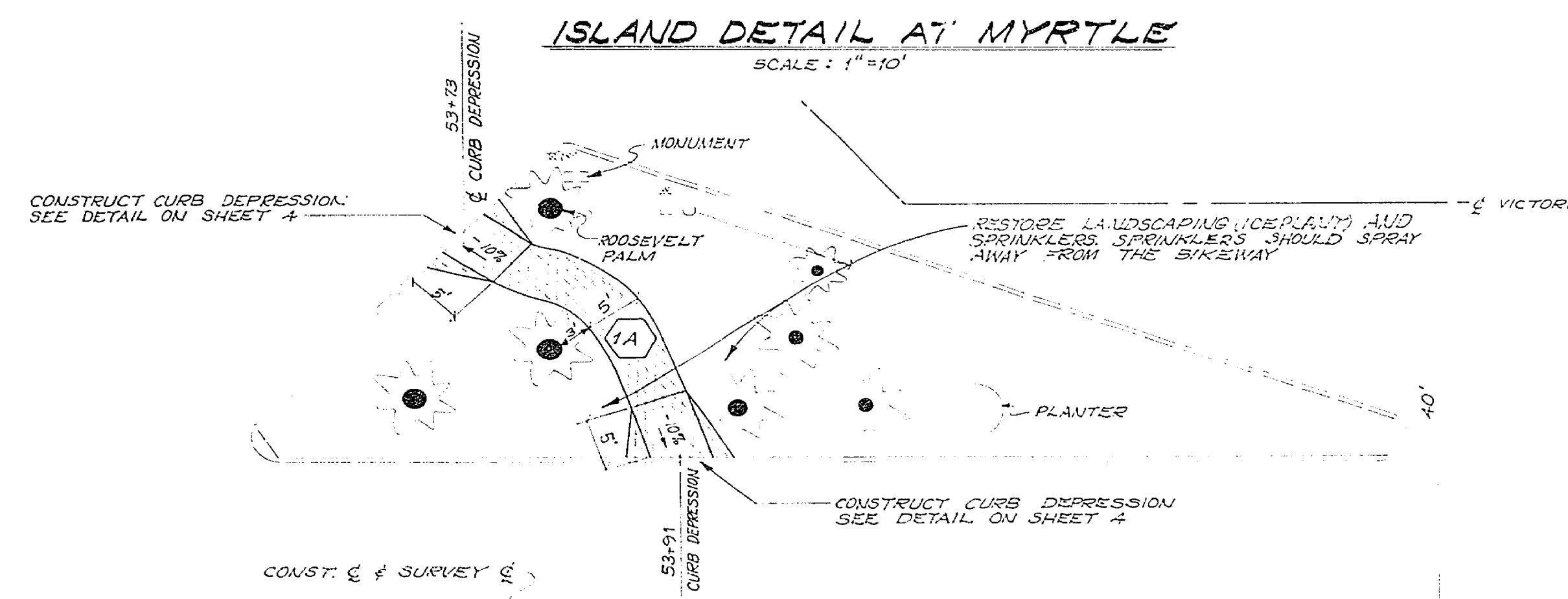
RAISED MARKER LOCATION	
STATION	STATION
41+75	43+12.5
42+00	43+25
42+12.5	43+37.5
42+25	44+00
42+37.5	44+12.5
42+50	44+25
42+62.5	44+37.5
42+75	44+50
42+87.5	44+62.5
43+00	44+75

PAVEMENT MARKERS SHALL BE TYPE "D" (2-WAY YELLOW REFLECTIVE)



TYPICAL SECTION
STA 40+00 TO STA. 50+00
SCALE: HOR. 1"=10'
VERT. 1"=2'

① STA. 44+25 TO STA. 46+00 AND 48+00 TO STA. 49+00
② EXIST. GUARD RAIL LEFT STA. 42+00 TO STA. 43+35 (MIN. DIST. BETWEEN GUARDRAIL AND CONST. SHALL BE 15')
③ STRIPING BY OTHERS (CITY) SEE TABLE AT LEFT FOR PAVEMENT MARKER LOCATION (2 MARKERS AT EACH LOCATION)
④ SOLID STRIPE BY OTHERS (CITY)



CURVE DATA

INDEX	R	Δ	T	L
1	200'	121.617°	146.03'	252.26'

RB-1007/30
ELEV. - 868.690
B.M. - BK. MARK IN CB. BKT. @ PANORAMA & OLIVEWOOD PIER PLAN 6-1176, R-1431 & R.B. 73/42 (NOT PRECISE DATUM)

Panorama Rd. Ivy St.
Bikeway
Olivewood Ave. to Victoria Ave.
(Central Riverside Commuter Bikeway)
=40'

R-2003

