

RIVERSIDE CITY OF RIVERSIDE CALIFORNIA

PUBLIC WORKS DEPARTMENT

WASHINGTON STREET SAFETY IMPROVEMENTS FROM BRADLEY TO VICTORIA

LENGTH OF PROJECT: 8400 FT. = 1.6 MI. = 2.6 KM.

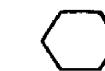
TRAFFIC INDEX: 7.0

CONSTRUCTION LEGEND

- REMOVE EXISTING A.C. PAVEMENT.
- REMOVE EXISTING A.C. PAVEMENT AND REPLACE WITH 0.35' A.C.
- REMOVE EXISTING A.C. PAVEMENT AND REPLACE WITH 0.35' A.C. OVER 0.45' D.G. OR 0.55' FULL DEPTH A.C.
- STRUCTURAL SECTION OF 0.35' A.C.
- STRUCTURAL SECTION OF 0.35' A.C. OVER 0.45' D.G. OR 0.55' FULL DEPTH A.C.
- GRADE DRIVEWAYS AND SHOULDERS TO LIMITS AS SHOWN ON PLANS.
- VARIABLE A.C. OVERLAY OVER EXISTING A.C. PAVEMENT.
- REMOVE EXISTING TREE. CLASS IS SHOWN ON PLAN. CLASS I FROM 6" TO 18" DIA. CLASS II OVER 18" TO 36" DIA.
- TRANSPLANT PALM TREES TO LOCATIONS INDICATED ON CONSTRUCTION PLANS.
- STRUCTURAL SECTION OF 0.20' A.C.

SPECIFIC CONSTRUCTION NOTES

NUMBERS ABOVE 100 IN A HEXAGON ON THE PLAN REFER TO THE RESPECTIVE STANDARD DRAWING AND SHALL BE CONSTRUCTED ACCORDINGLY, UNLESS MODIFICATIONS ARE NOTED ON THE PLAN OR COVER SHEET BELOW. ANY NUMBER SHOWN BELOW THE STANDARD DRAWING NUMBER INDICATES THE SPECIFIC ALTERNATE TO BE CONSTRUCTED.



GENERAL CONSTRUCTION NOTES

1. RIGHTS OF ENTRY HAVE BEEN OBTAINED FOR WORK ON PRIVATE PROPERTY WHERE SHOWN ON THE PLANS.
2. EXISTING PAVEMENT WIDTHS AND CROSS-SLOPES, AND DITCH CATCH POINTS ARE APPROXIMATE.
3. OBLITERATE STRIPES AND MARKINGS STA. 116+50 TO STA. 160+00 AND STA. 174+00 TO STA. 177+00.
4. PALM TREES SHALL BE RELOCATED TO POSITIONS SHOWN ON SECTION ON SHEET 3 AND PER NOTE ON SHEET 6.

EXISTING UNDERGROUND & TOPOGRAPHY LEGEND

EXISTING UNDERGROUND UTILITIES:

SAINTARY SEWER	4" S	TELEPHONE CONDUIT	1"	T
WATER LINE	4" W	ELECTRICAL CONDUIT	2"	E
STORM DRAIN	24" S.D.	STEEL LIGHT PIPING	3"	SL
WATER LINE	8" W	TRAFFIC SIGNAL	3"	TS
IRRIGATION LINE	20" IRR	FIRE ALARM	1"	F
UNASSIGNED UTILITIES	6" (RABAN'S)			

EXISTING TOPOGRAPHY:

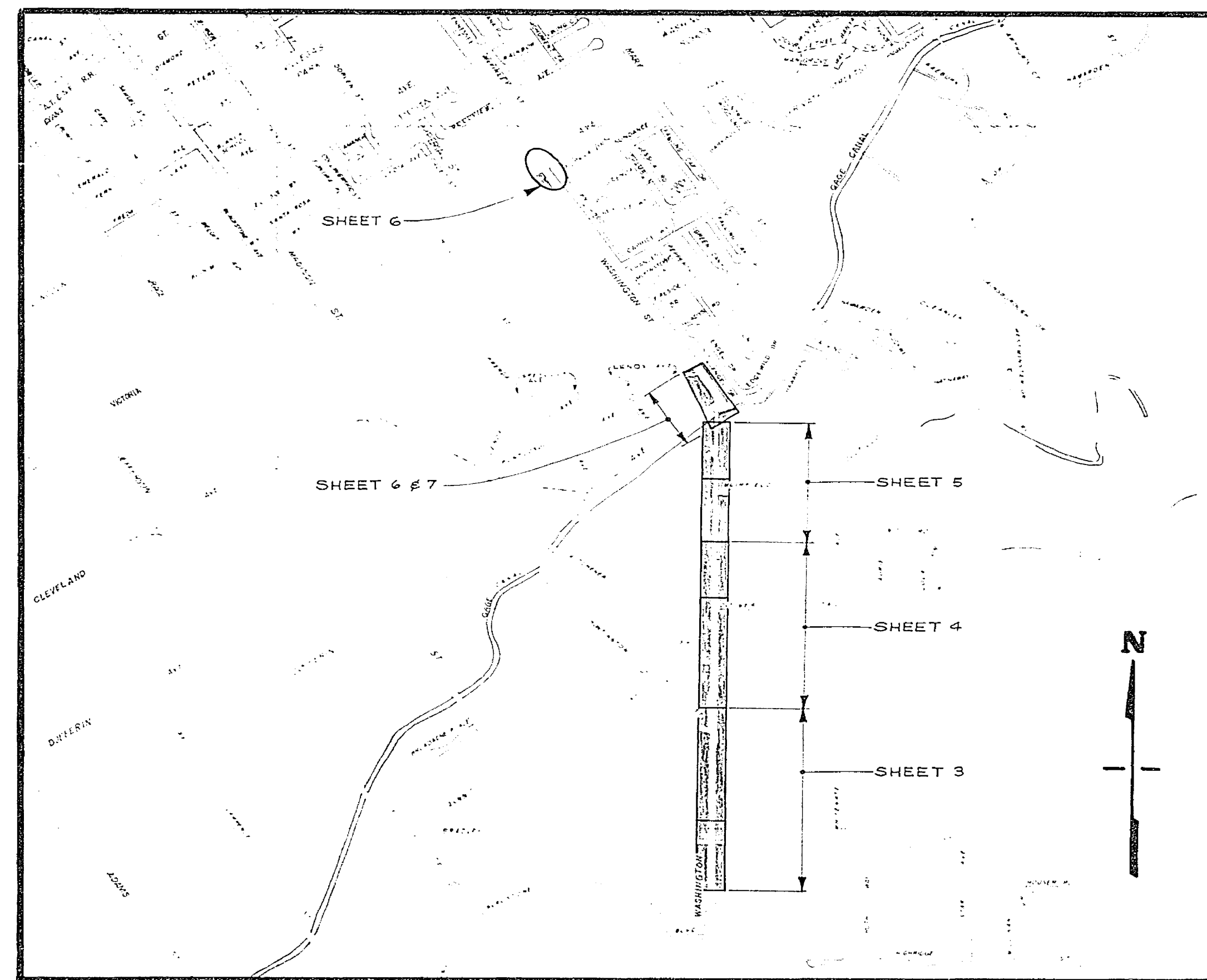
ROAD FENCE	ROAD FENCE	TOP OF SLOPE	TOP OF SLOPE
WIRE FENCE	WIRE FENCE	TOE OF SLOPE	TOE OF SLOPE
CHAIN LINK FENCE	CHAIN LINK FENCE	DIRECTION OF FLOW	DIRECTION OF FLOW

SAINTARY SEWER MH	POLE & GUY ANCHOR	PEDESTRIAN PUSH BUTTON
SAINTARY SEWER CLEANOUT	ELECTRIC POLE	RAILROAD TRACKS
STORM DRAIN MH	TELEPHONE POLE	RAILROAD SIGN
IRRIGATION WEIR	JOINT USE POLE	RAILROAD SIGNAL
WATER MH	MAIL BOX	STREET LIGHT & TRAFFIC SIGNAL ON EAST ARM
GAS MH	TRAFFIC SIGN	STREET LIGHT (UPRIGHT)
ELECTRIC MH	PARKING METER	STREET LIGHT
TELEPHONE MH OR JUNCTION	FIRE ALARM BOX	TRAFFIC SIGNAL
WATER METER	STREET NAME SIGN	TRAFFIC SIGNAL ON MAST ARM
FIRE HYDRANT	GAS METER	TRAFFIC SIGNAL CONTROLLER
SPRINKLER HEAD	MAIL BOX	TRAFFIC SIGNAL PRESSURE DETECTOR
VALVE	FAUCET	TRAFFIC SIGNAL LOOP DETECTOR
AP VALVE	TELEPHONE RISER	
AP VALVE	WHEEL STOP	
AP VALVE	A.C. BERM	
	STEEL POST	
	WOOD POST	

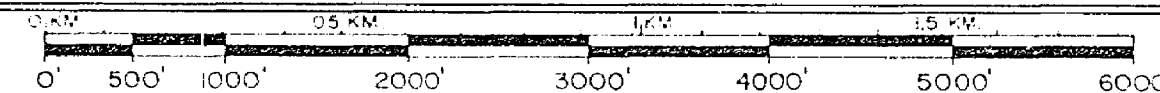
CONCRETE	DECIDUOUS TREE
ASPHALT	PALM TREE
EDGE OF PAVEMENT	SHRUBBERY
BUILDING	TREE STUMP
UNDERGROUND STRUCTURE	EVERGREEN TREE
OVERHANGING STRUCTURE	

INDEX OF DRAWINGS

1. TITLE SHEET
2. INTERSECTION AND DRIVEWAY DETAILS.
3. PLAN AND TYPICAL SECTIONS, BRADLEY TO HUNTINGTON
4. " " " " KITCHENER AND TIGER TAIL
5. " " " " MURFIELD TO GAGE CANAL
6. " " " " GAGE CANAL TO VICTORIA
7. DETAIL PLAN AND TYPICAL SECTIONS, HAWARDEN, GAGE CANAL, DUFFERIN, TO LENOX
8. PROFILES, AT WASHINGTON AND DUFFERIN

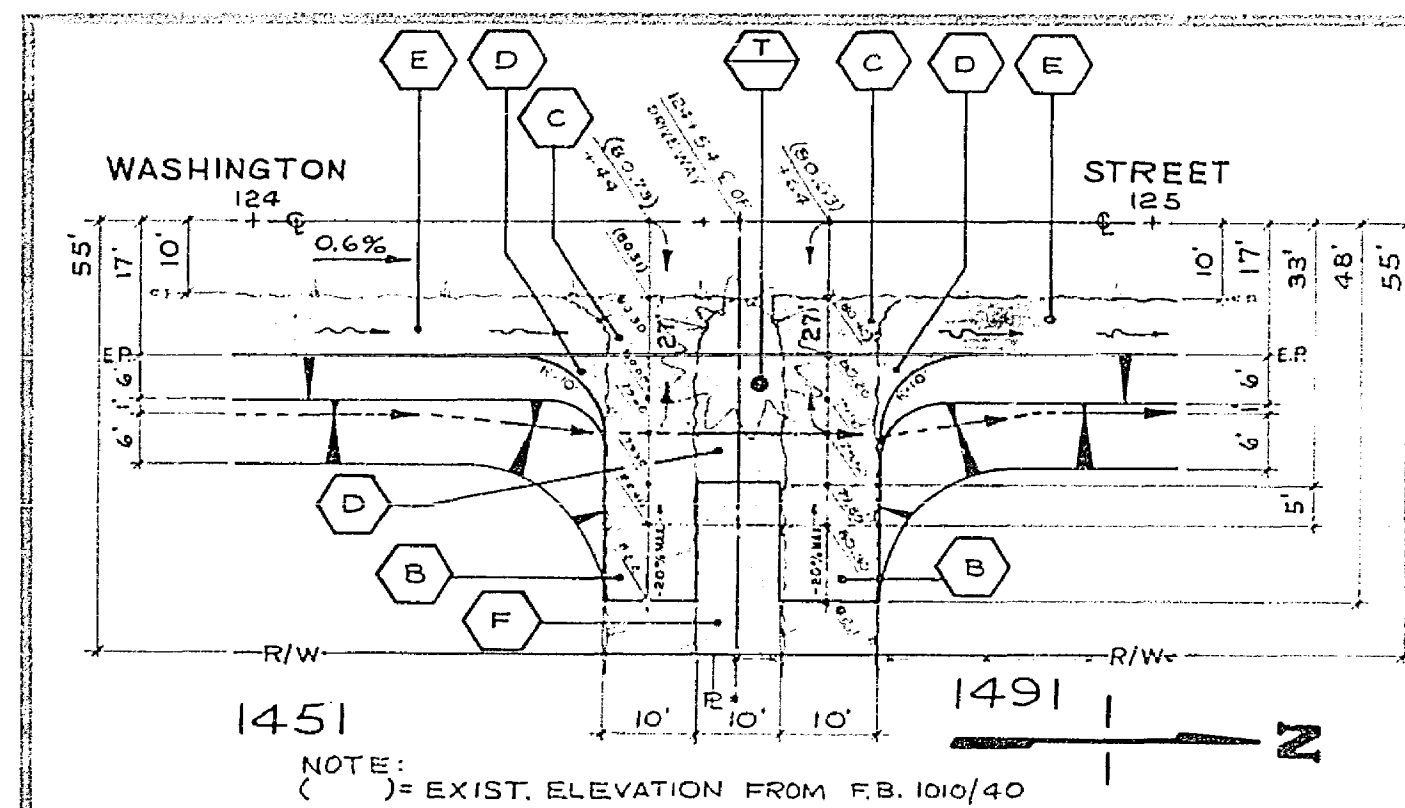


PROJECT LOCATION PLAN



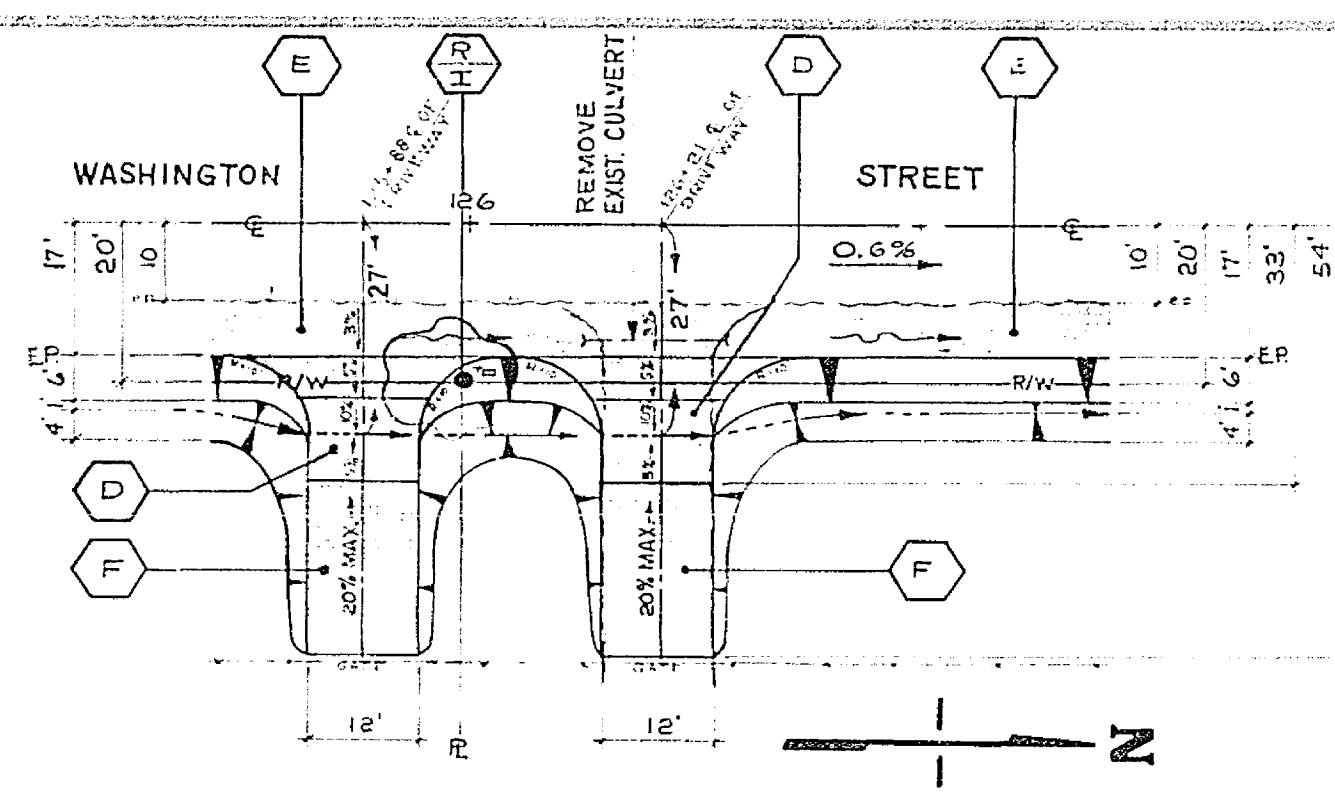
SCALE 1" = 1000'

<p>-CAUTION-</p> <p>PACIFIC TELEPHONE CABLES UNDERGROUND BEFORE EXCAVATING CALL COLLECT: 7:30 A.M. to 5 P.M. After Hours & Holidays</p> <p>FOR FREE CABLE LOCATING SERVICE</p>	<p>CITY OF RIVERSIDE PUBLIC WORKS DEPARTMENT</p>		<p>WASHINGTON STREET SAFETY IMPROVEMENTS FROM BRADLEY TO VICTORIA</p> <p>TITLE SHEET</p>		<p>ACCOUNT No. 30 975 218 07</p> <p>DRAWING NUMBER</p> <p>R-2004</p> <p>SHEET 1 OF 8</p>
	<p>APPROVED BY: [Signature]</p> <p>PRINCIPAL ENGINEER: [Signature]</p> <p>PARK DEPARTMENT: [Signature]</p> <p>TRAFFIC DIVISION: [Signature]</p> <p>CHIEF ENGR. [Signature]</p>	<p>DATE: 7-15</p> <p>DATE: 8/24</p> <p>DATE: 8/23</p> <p>DATE: 9-15</p>	<p>APPROVED BY: [Signature]</p> <p>PUBLIC WORKS DIRECTOR: [Signature]</p> <p>DATE: [Signature]</p>	<p>DESIGNED BY: [Signature]</p> <p>DRAWN BY: [Signature]</p> <p>CHECKED BY: [Signature]</p>	



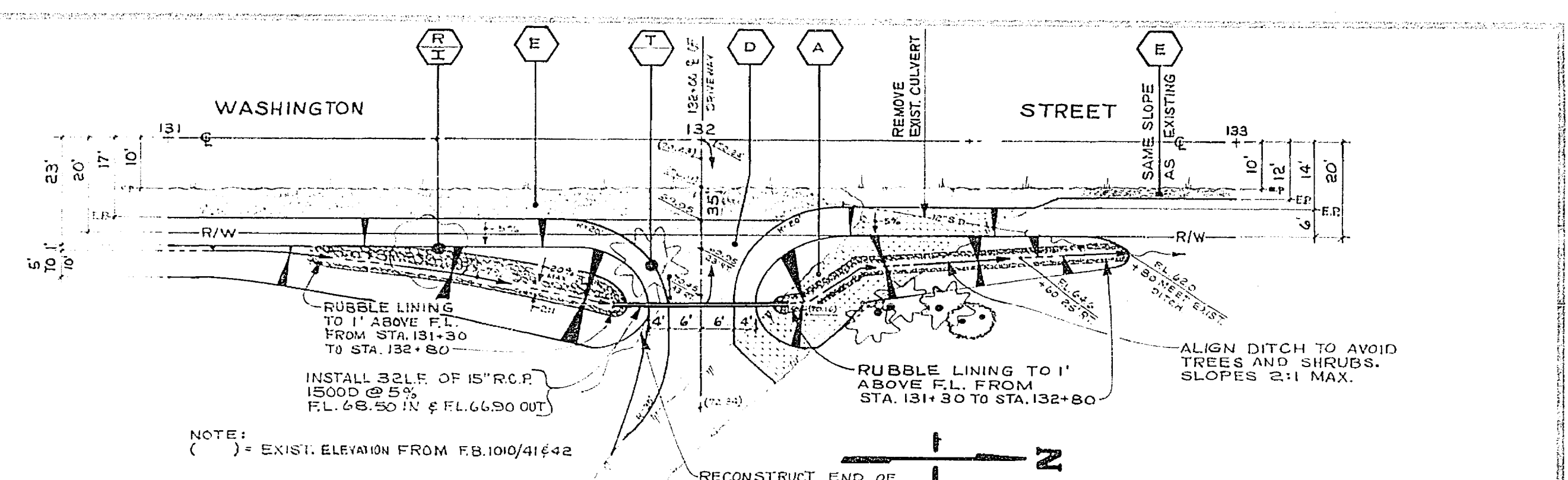
SEE SHEET 3 AT STA. 124+54 RIGHT FOR LOCATION.

DETAIL "A"
SCALE 1" = 20'



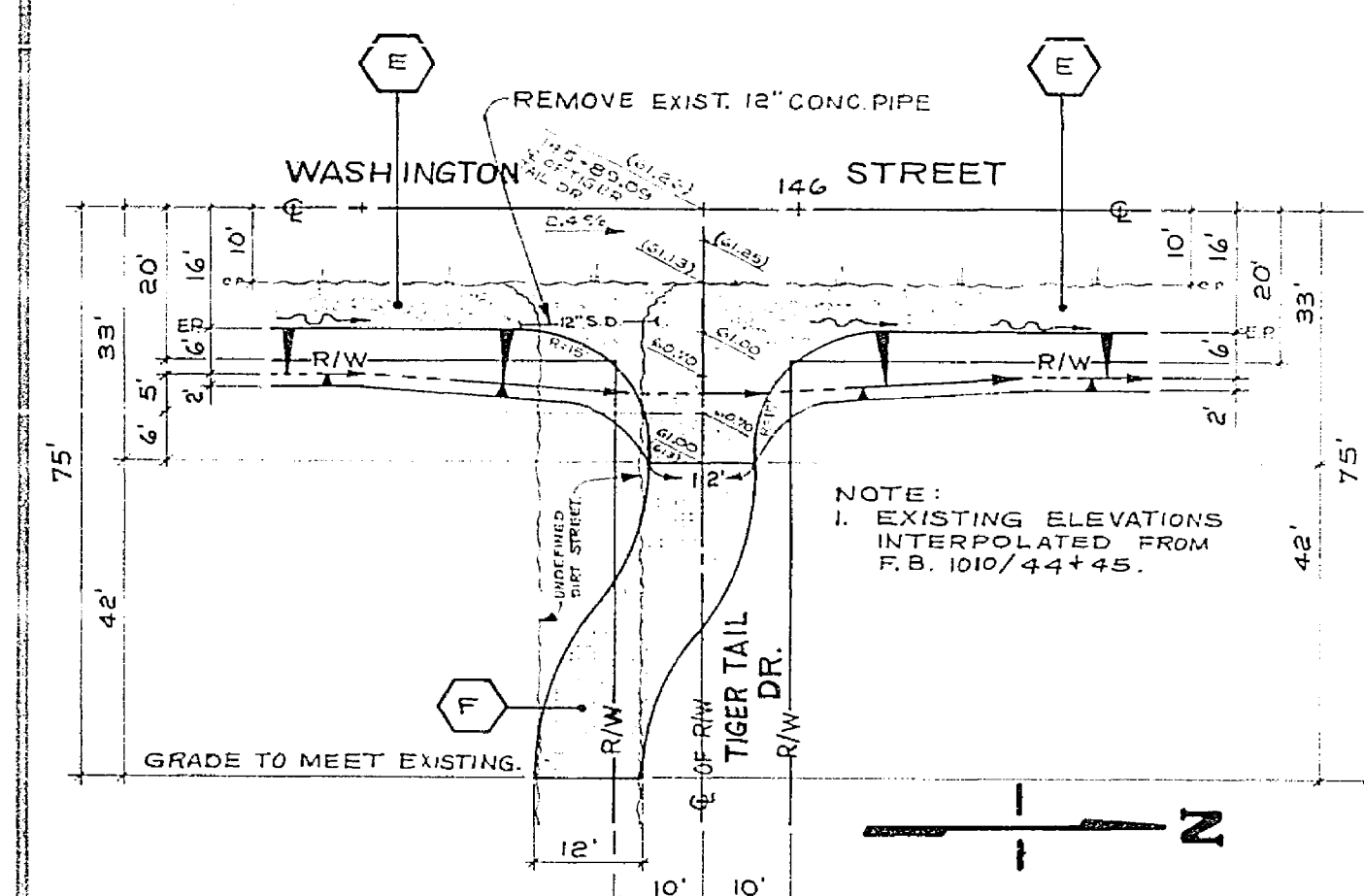
SEE SHEET 3 AT STA. 125+88 RIGHT FOR LOCATION.

DETAIL "B"
SCALE 1" = 20'



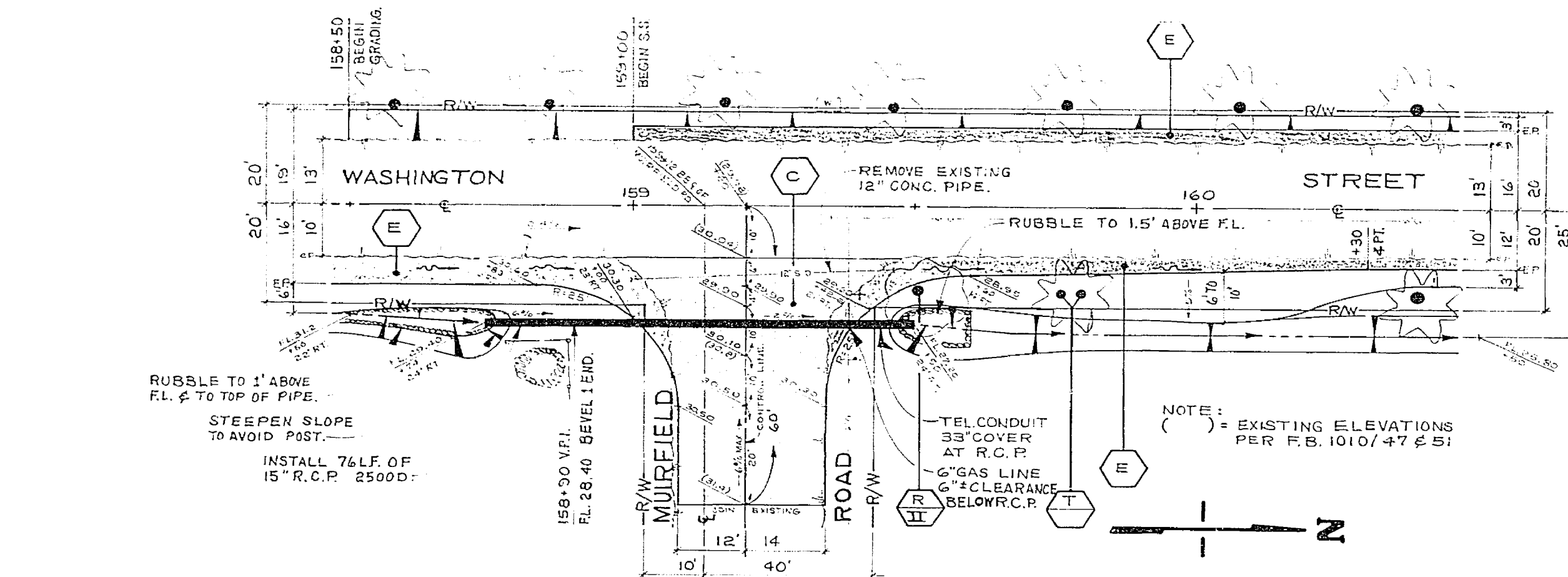
SEE SHEET 3 AT STA. 132+00 RIGHT FOR LOCATION.

DETAIL "C"
SCALE 1" = 20'



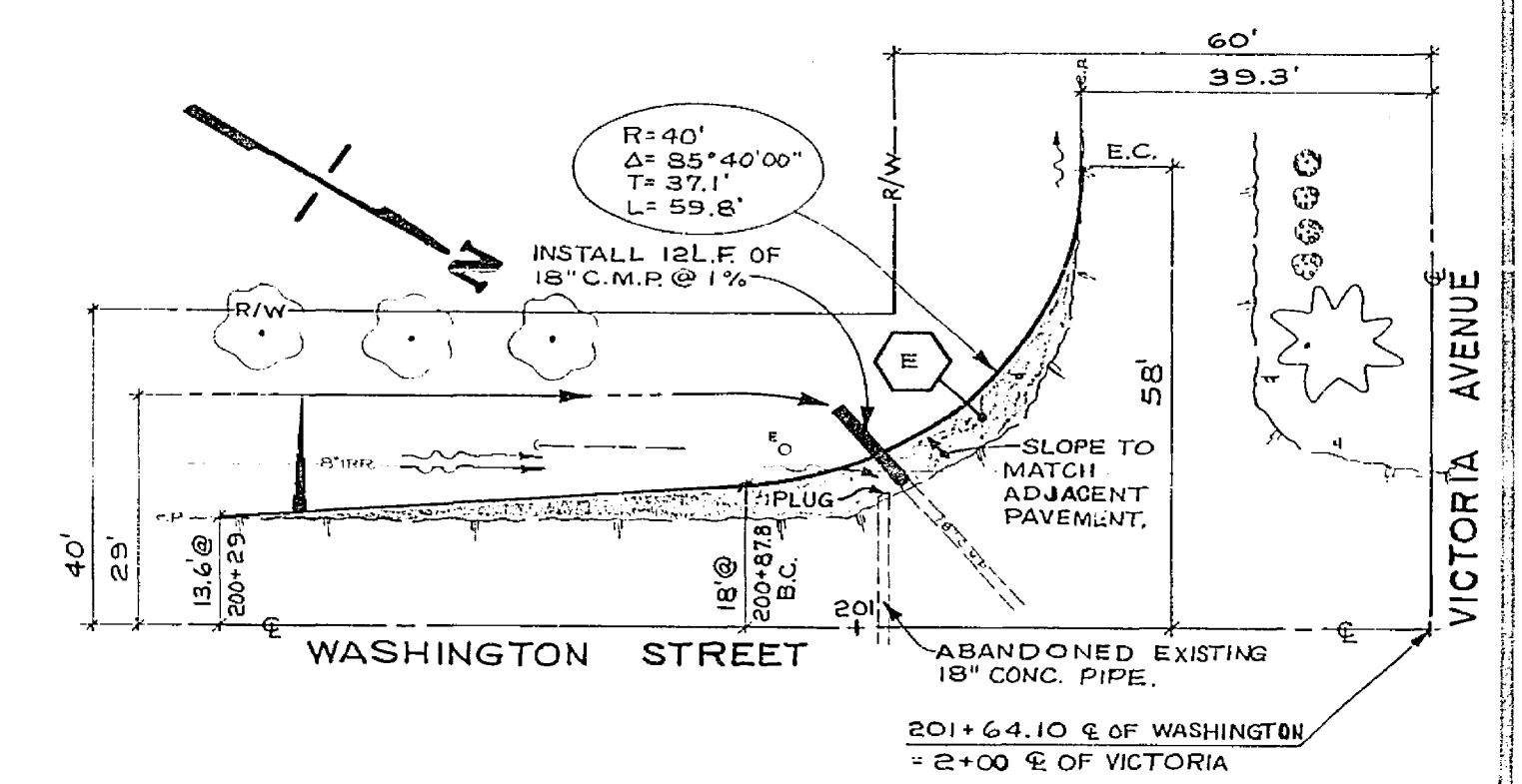
SEE SHEET 4 AT STA. 145+89.09 RIGHT = C/O OF TIGERTAIL DR.

DETAIL "D"
SCALE 1" = 20'



SEE SHEET 5 AT STA. 159+12.88 RIGHT = C/O OF MUIRFIELD RD.

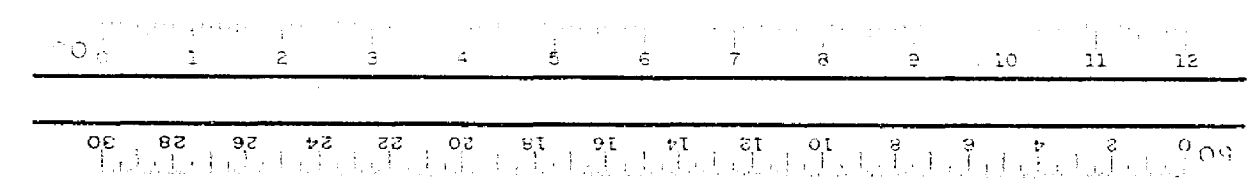
DETAIL "E"
SCALE 1" = 20'

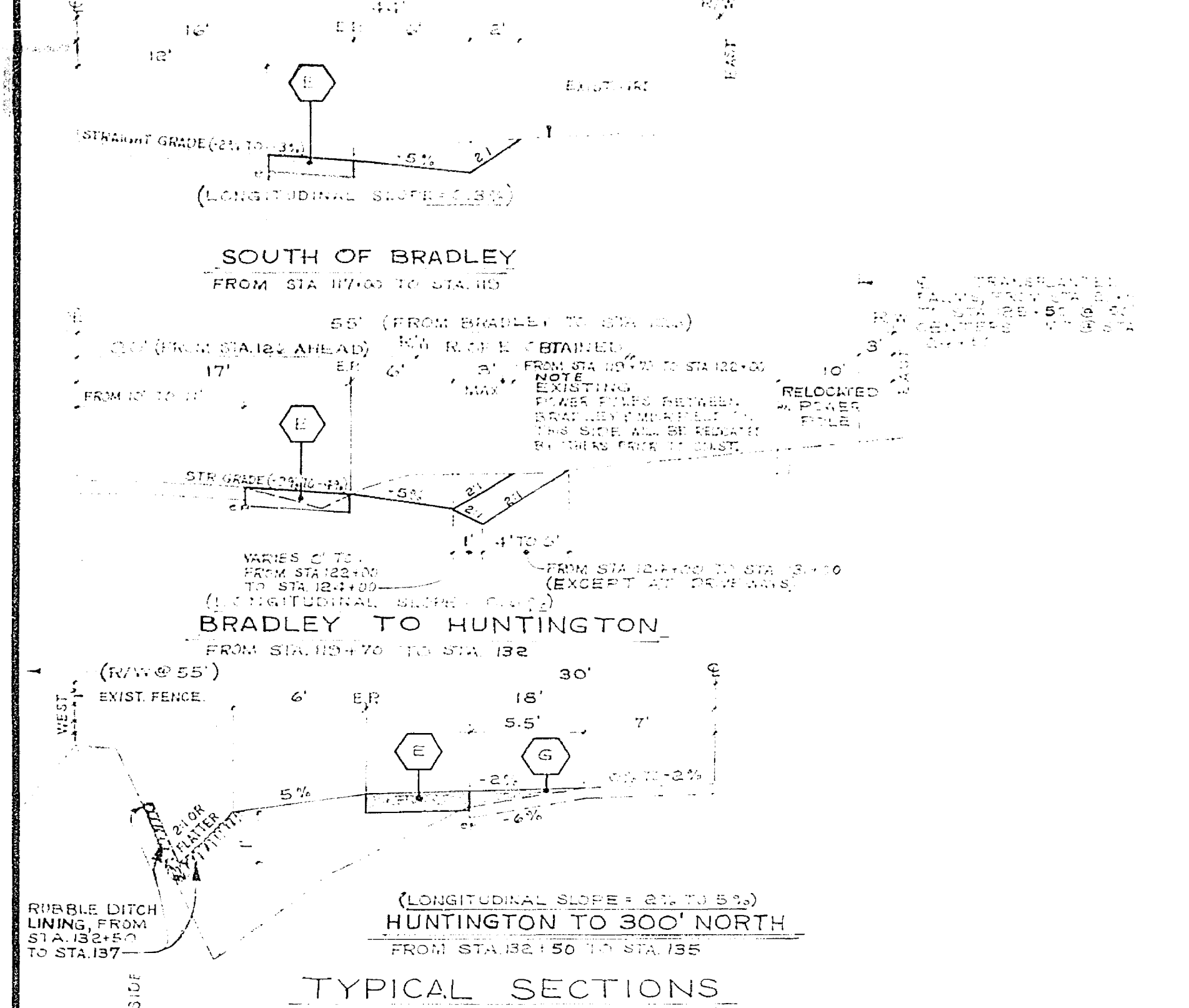
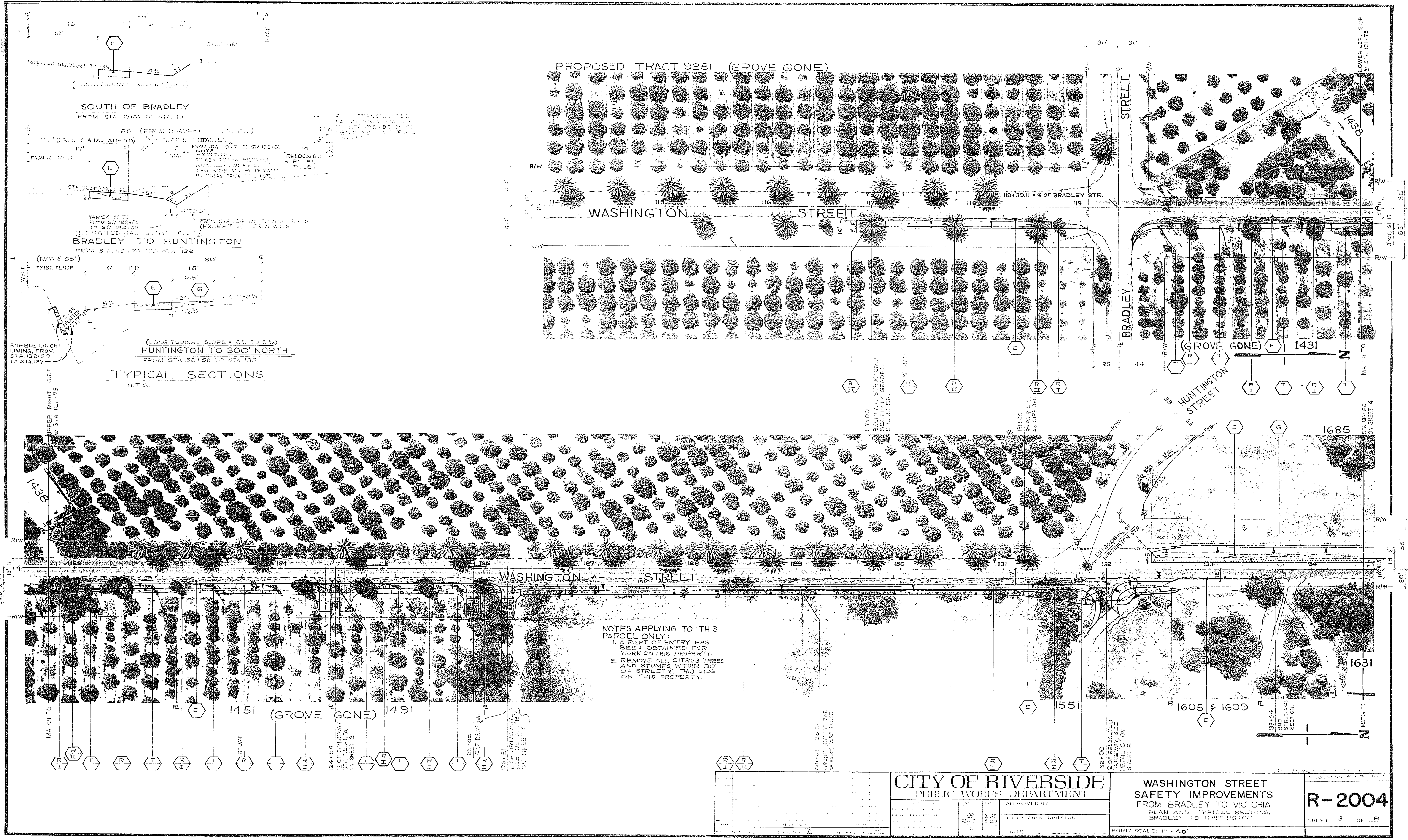


SEE SHEET 6 AT INTERSECTION OF WASHINGTON & VICTORIA.

DETAIL "F"
SCALE 1" = 20'

<p>AS BUILT 8-7-75 JHM</p> <p>ACCOUNT NO. 30575 2807</p>	
<p>CITY OF RIVERSIDE PUBLIC WORKS DEPARTMENT</p>	
<p>WASHINGTON STREET SAFETY IMPROVEMENTS FROM BRADLEY TO VICTORIA INTERSECTION AND DRIVEWAY DETAILS</p>	
<p>R-2004</p> <p>SHEET 2 OF 8</p>	
<p>SCALE AS SHOWN</p>	

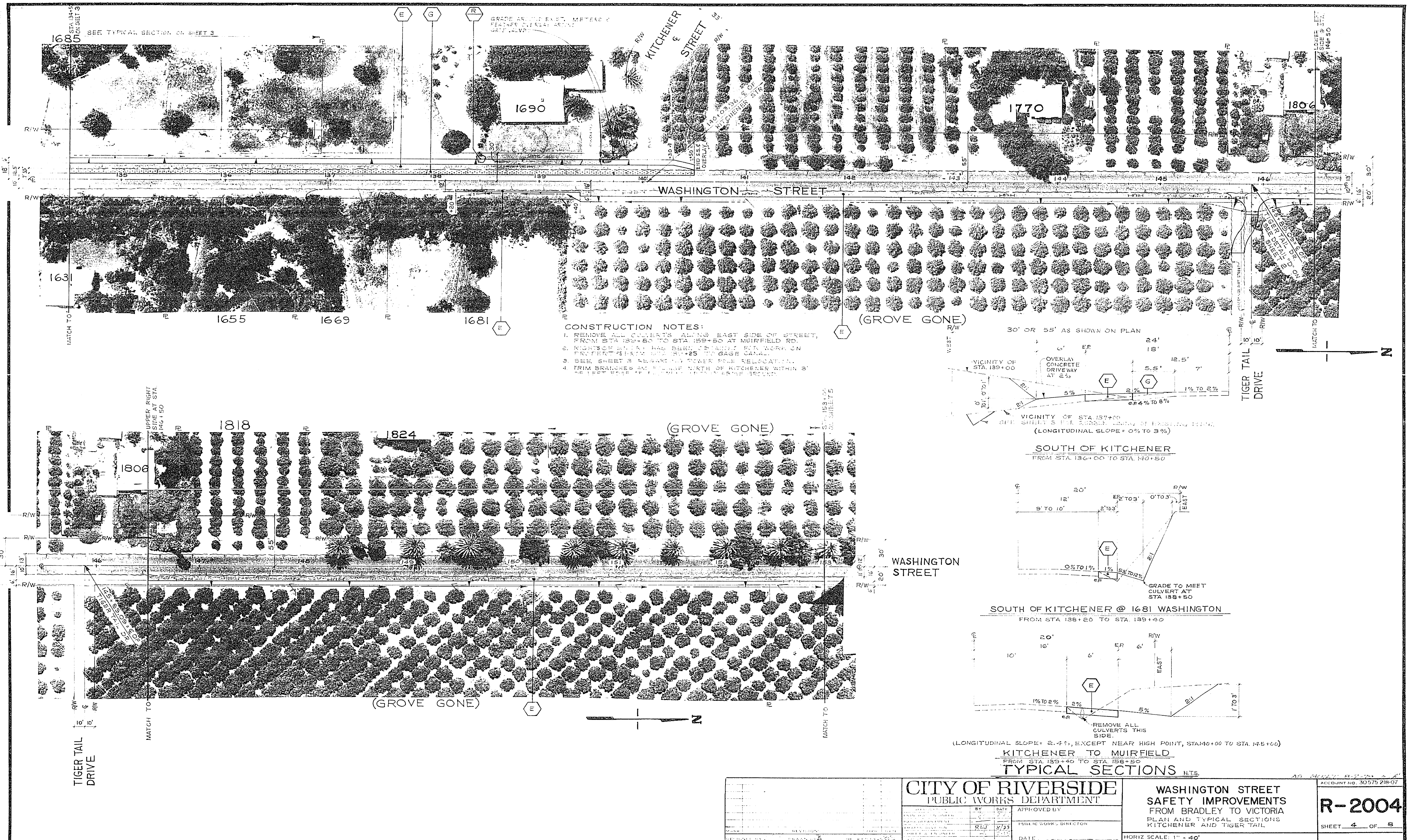




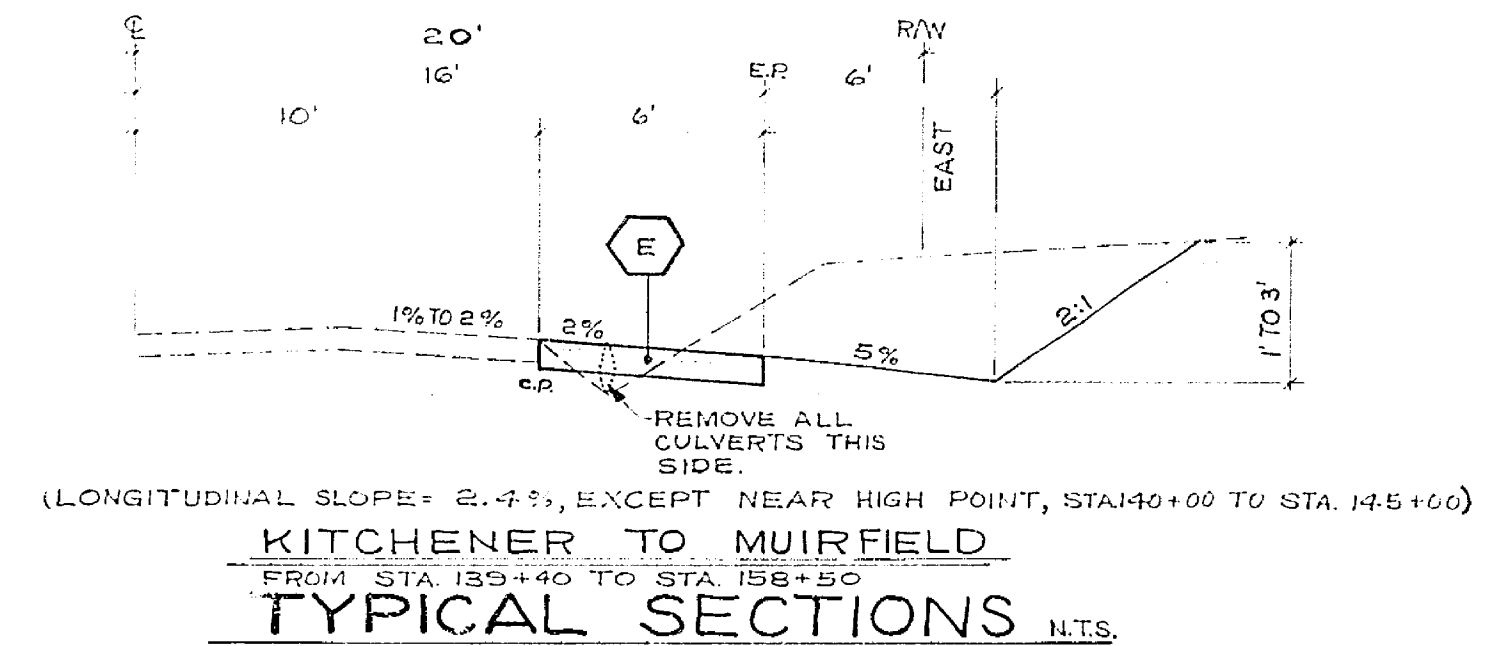
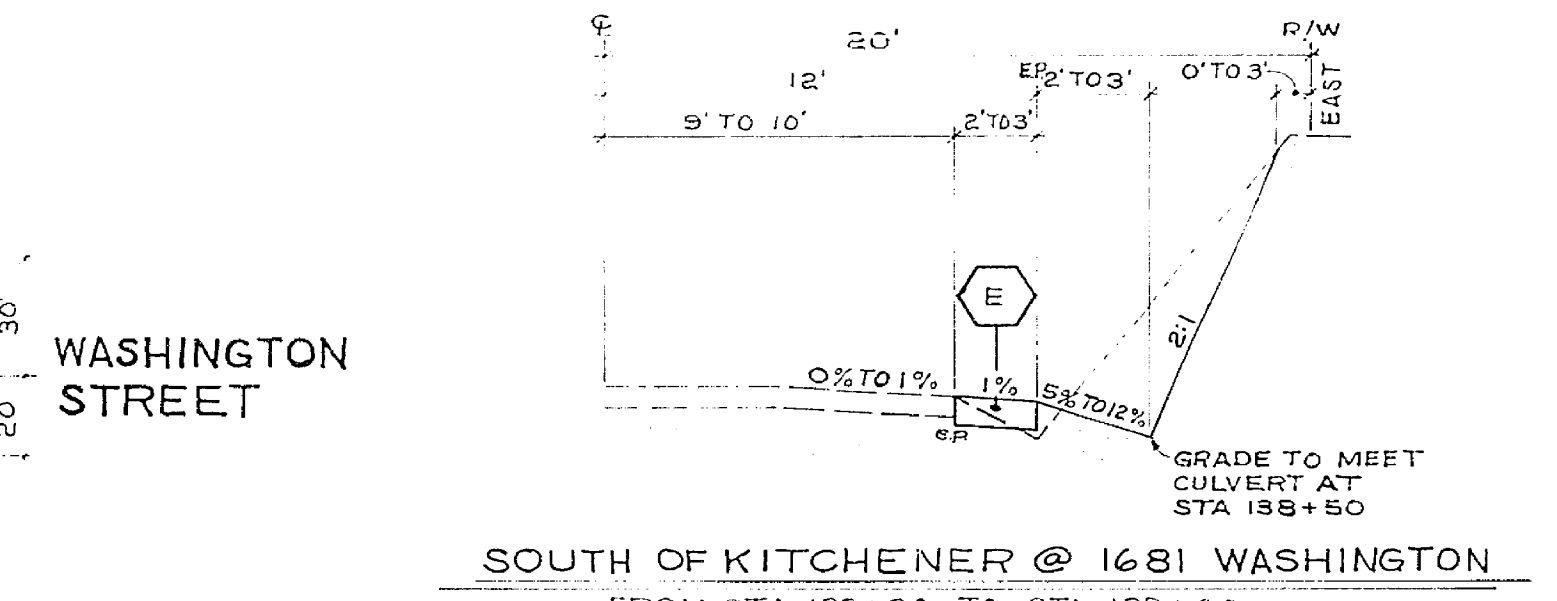
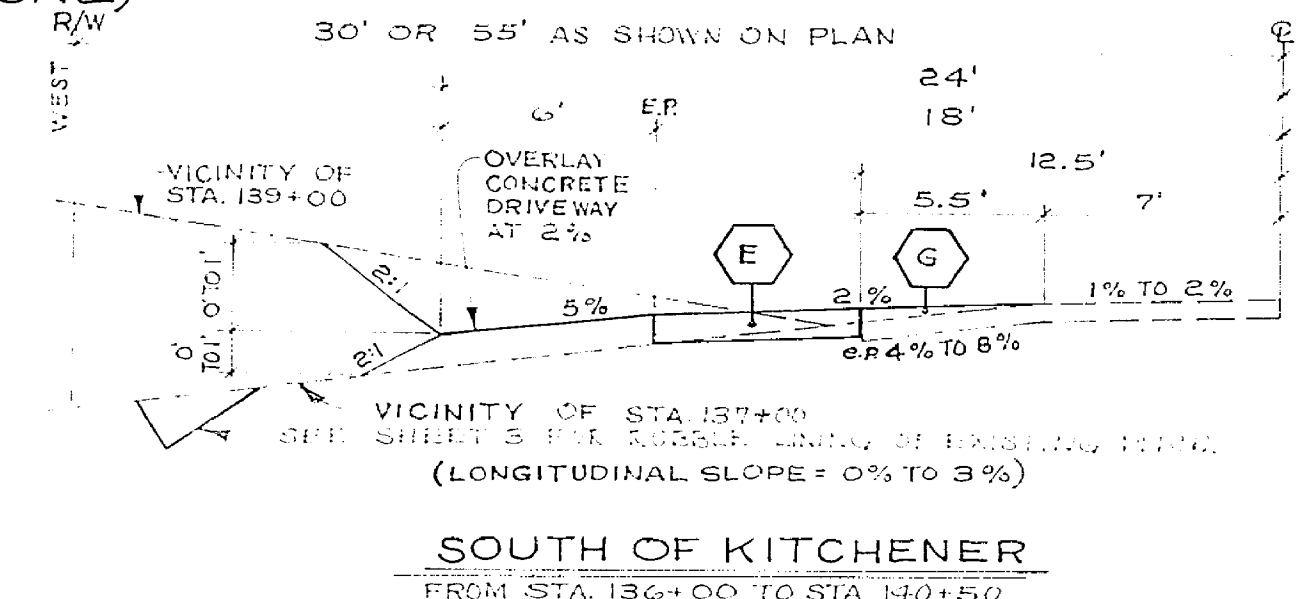
NOTES APPLYING TO THIS PARCEL ONLY:

1. A RIGHT OF ENTRY HAS BEEN OBTAINED FOR WORK ON THIS PROPERTY.
2. REMOVE ALL CITRUS TREES AND STUMPS WITHIN 30' OF STREET E, THIS SIDE ON THIS PROPERTY.

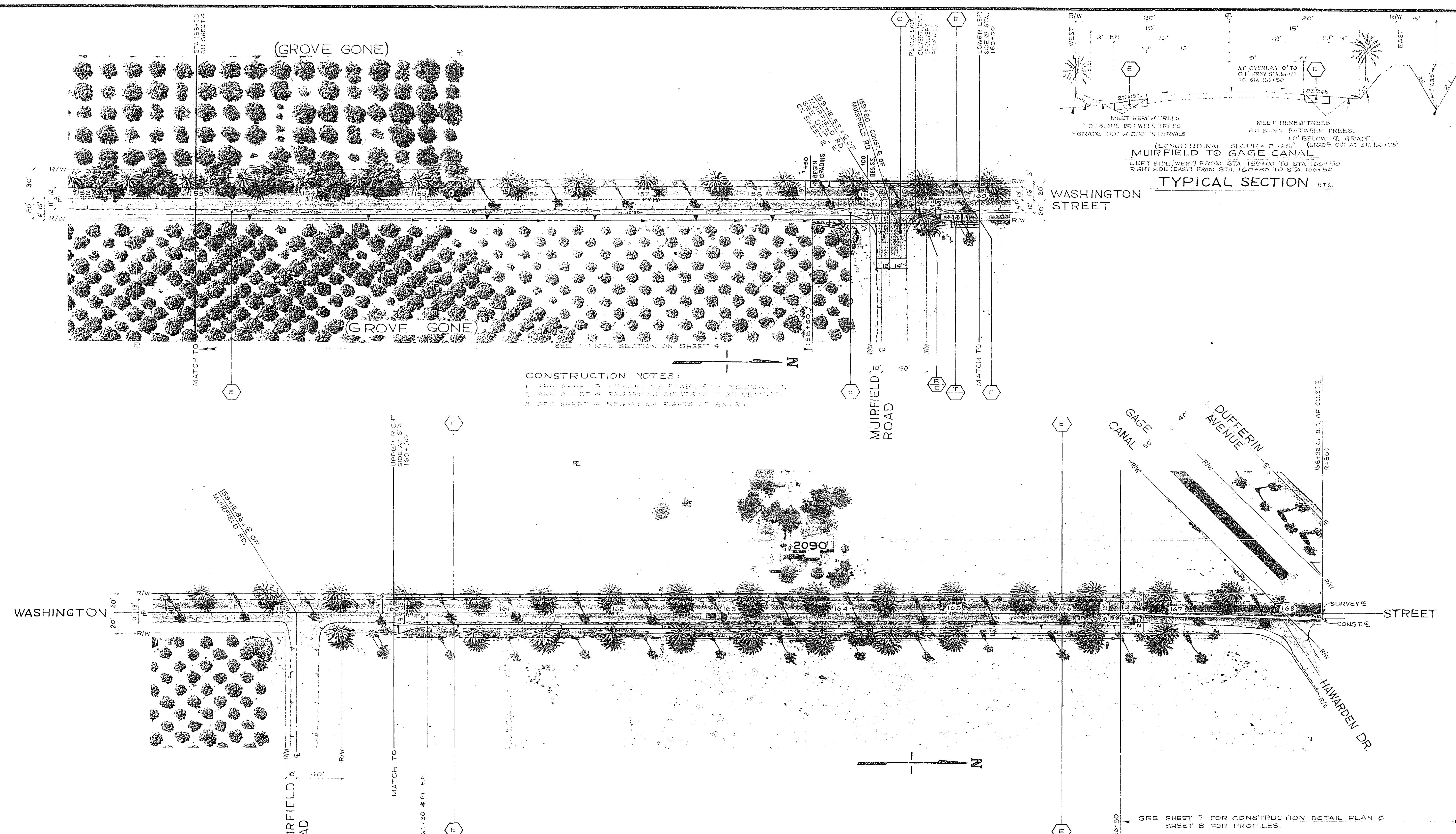
CITY OF RIVERSIDE PUBLIC WORKS DEPARTMENT		WASHINGTON STREET SAFETY IMPROVEMENTS FROM BRADLEY TO VICTORIA PLAN AND TYPICAL SECTIONS BRADLEY TO HUNTINGTON		R-2004 SHEET 3 OF 6
APPROVED BY _____		DATE _____		
HORIZ SCALE: 1" = 40'				



- CONSTRUCTION NOTES:**
1. REMOVE ALL CULVERTS ALONG EAST SIDE OF STREET, FROM STA 139+50 TO STA 139+50 AT MUIRFIELD RD.
 2. RIGHT OF WAY HAS BEEN RELOCATED TO WORK ON EXISTING DRIVEWAY AT STA 139+25 TO GAGE CANAL.
 3. SEE SHEET 3 REGARDING STAKE RELOCATION.
 4. TRIM BRANCHES AND REMOVE NORTH OF KITCHENER WITHIN 5' TO LEFT EDGE OF DRIVEWAY NORTH OF BRIDGE.



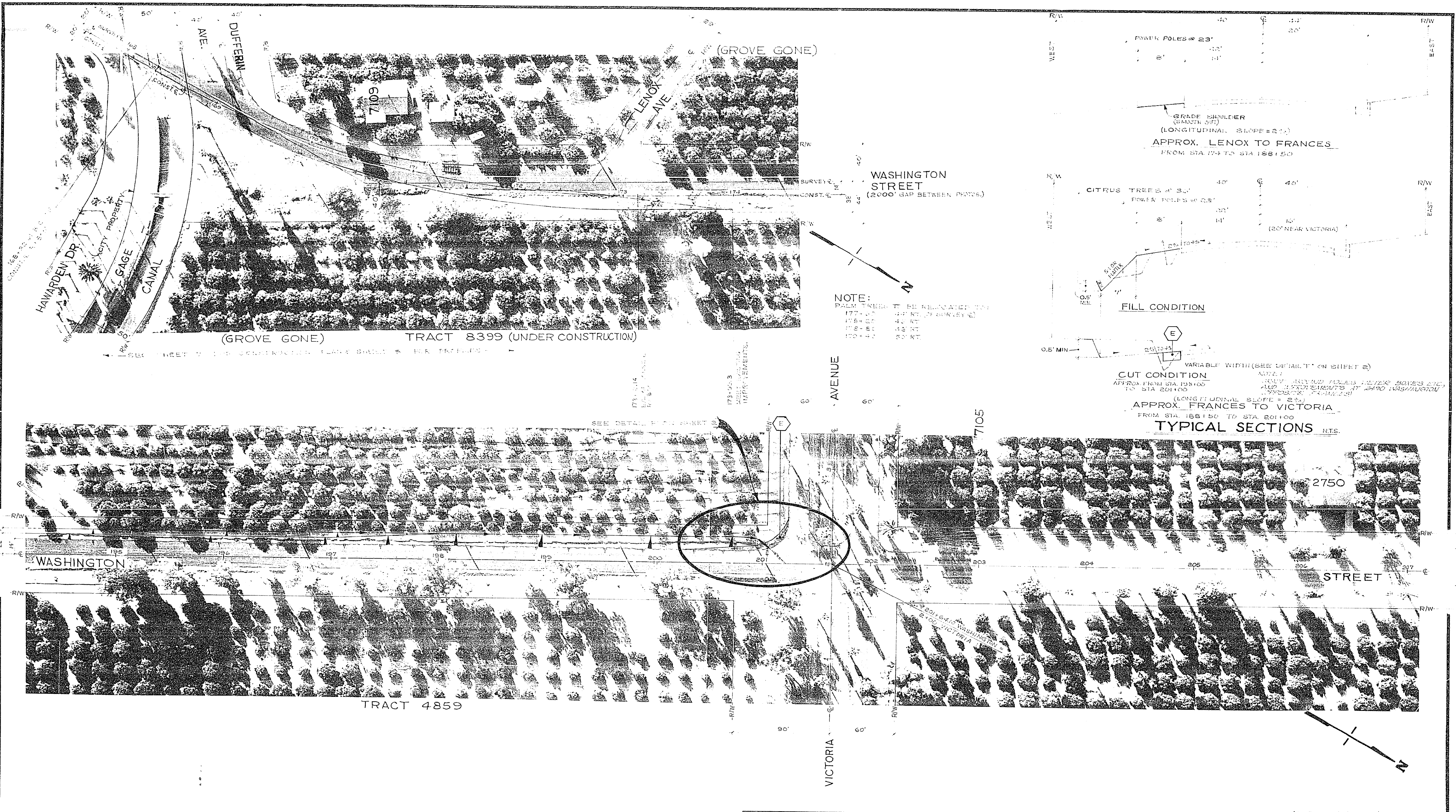
CITY OF RIVERSIDE PUBLIC WORKS DEPARTMENT		WASHINGTON STREET SAFETY IMPROVEMENTS FROM BRADLEY TO VICTORIA PLAN AND TYPICAL SECTIONS KITCHENER AND TIGER TAIL		R-2004 SHEET 4 OF 8
PROJECT NO. 30575 218-07 DRAWN BY: [blank] CHECKED BY: [blank] DATE: [blank]	BY: [blank] DATE: [blank]	APPROVED BY: [blank] PUBLIC WORKS DIRECTOR	HORIZ SCALE: 1" = 40' ACCOUNT NO. 30575 218-07	



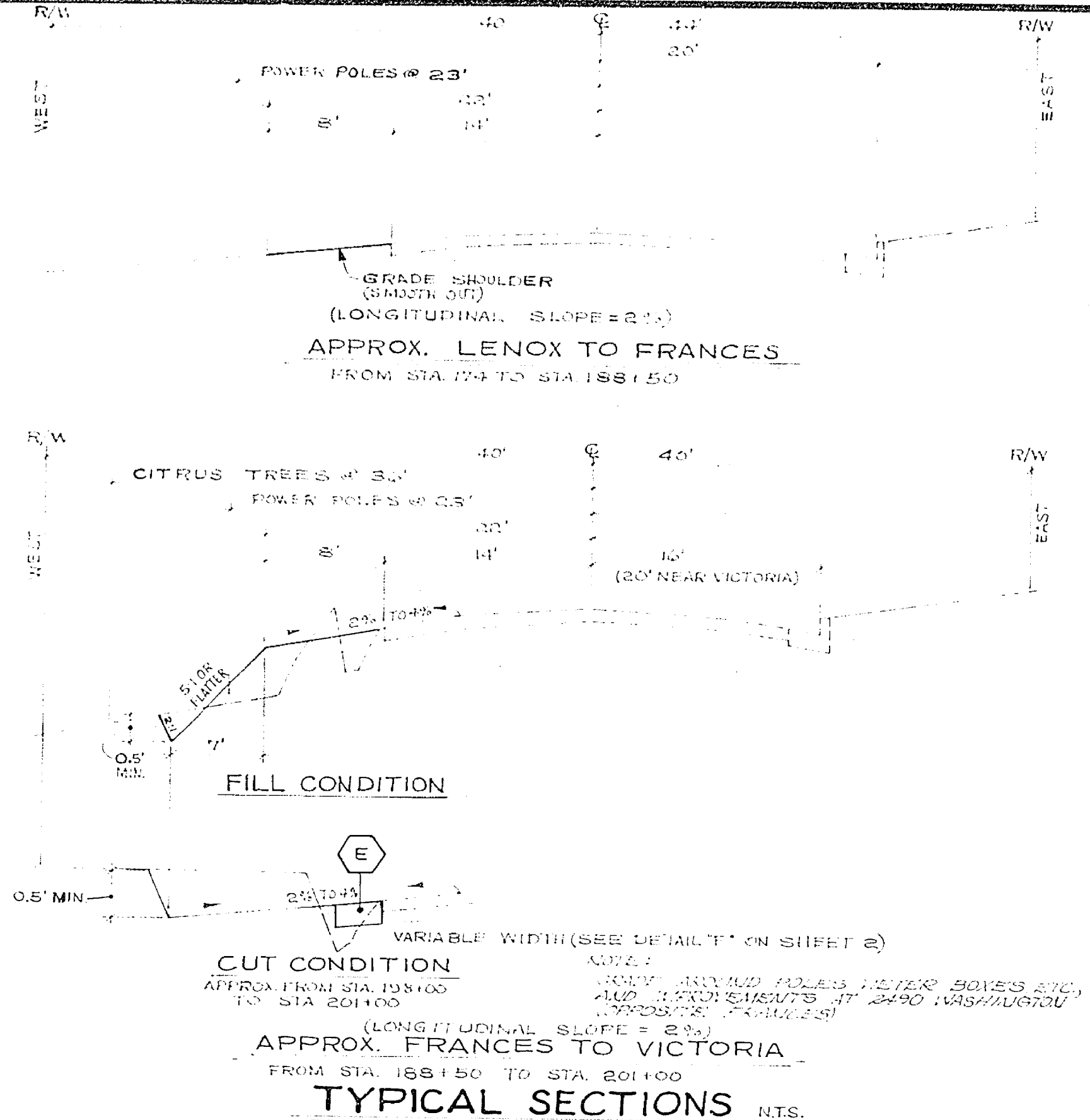
CONSTRUCTION NOTES:
 1. SEE SHEET 7 REGARDING PANEL THE RELOCATION OF THE EXISTING 4' DIA. MANHOLE COVERTS TO BE REMOVED.
 2. SEE SHEET 7 REGARDING NOTES AT EX. 57.

TYPICAL SECTION NTS.
 (LONGITUDINAL SLOPE = 2.0%)
 MUIRFIELD TO GAGE CANAL
 LEFT SIDE (WEST) FROM STA. 159+00 TO STA. 160+50
 RIGHT SIDE (EAST) FROM STA. 160+30 TO STA. 165+50

CITY OF RIVERSIDE PUBLIC WORKS DEPARTMENT		WASHINGTON STREET SAFETY IMPROVEMENTS FROM BRADLEY TO VICTORIA PLAN AND TYPICAL SECTIONS MUIRFIELD TO GAGE CANAL		R-2004 SHEET 5 OF 8
APPROVED BY PUBLIC WORKS DIRECTOR	DATE 3/23	ACCOUNT NO. 40-75-218-07	HORIZ. SCALE: 1" = 40'	

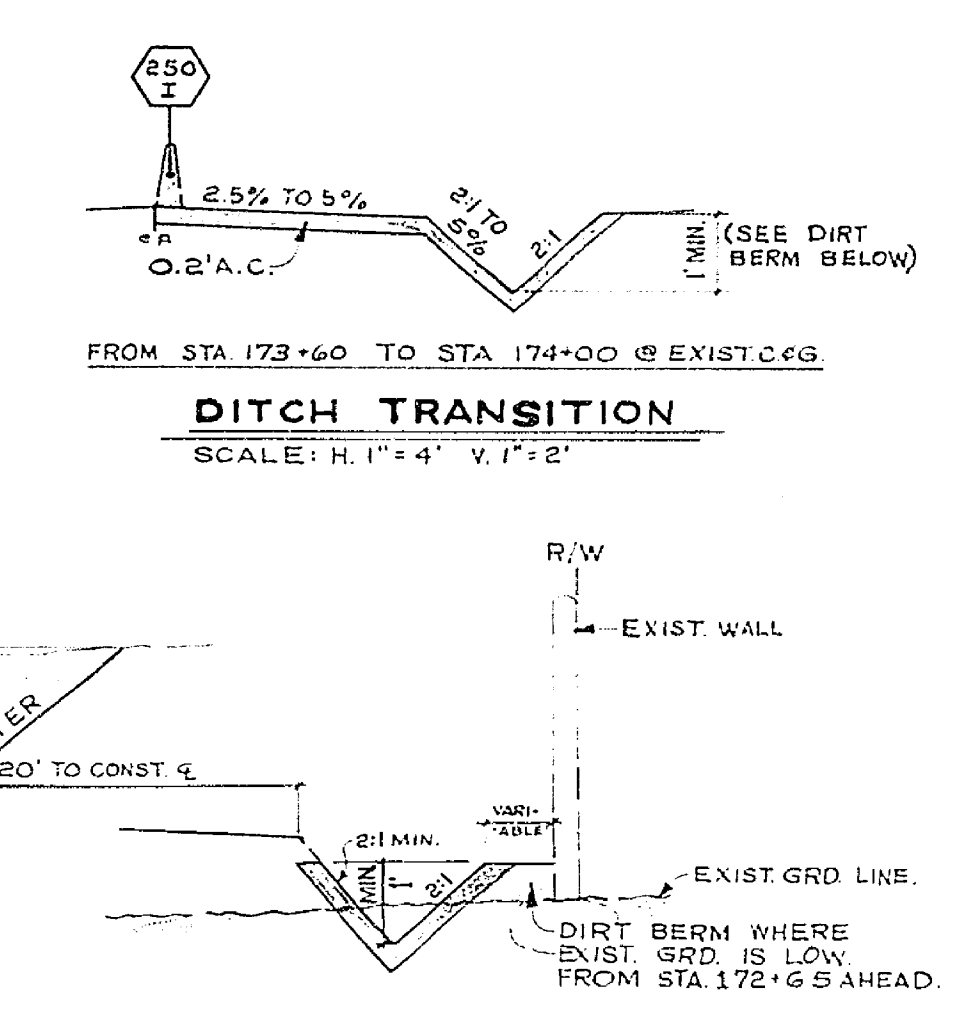
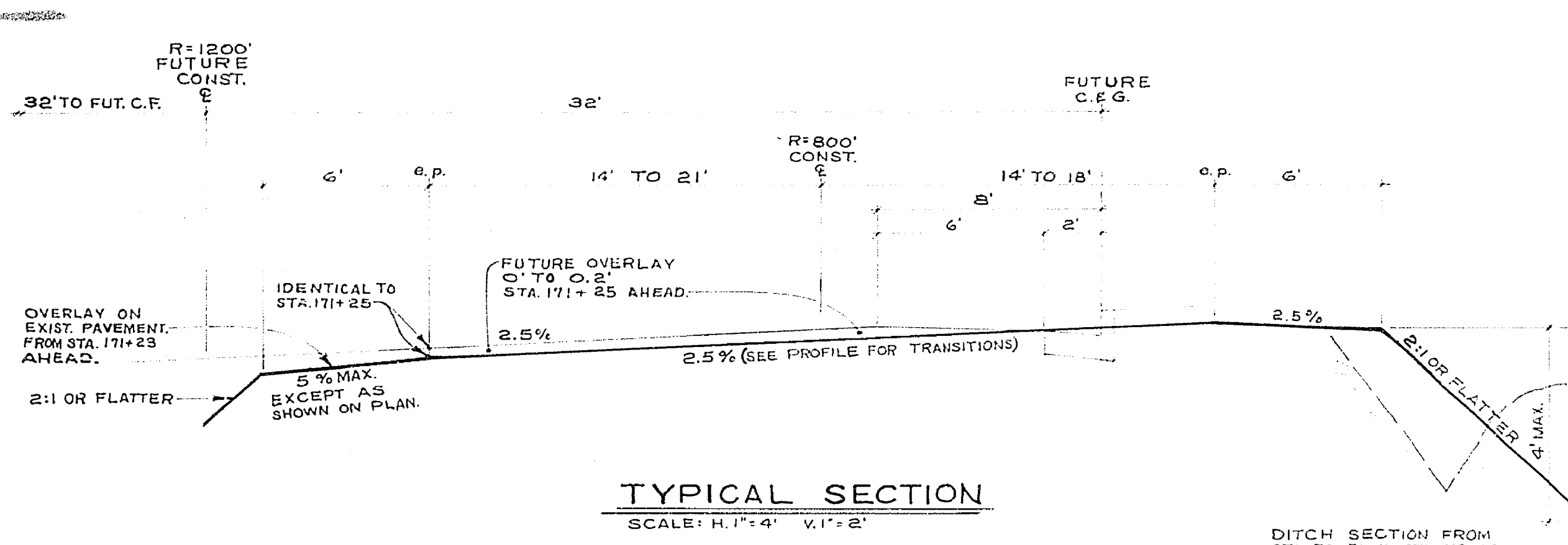


NOTE:
 PALM TREES TO BE RELOCATED TO:
 177+00 TO 178+00 (BY SURVEY)
 178+00 TO 179+00 (BY SURVEY)
 179+00 TO 180+00 (BY SURVEY)
 180+00 TO 181+00 (BY SURVEY)



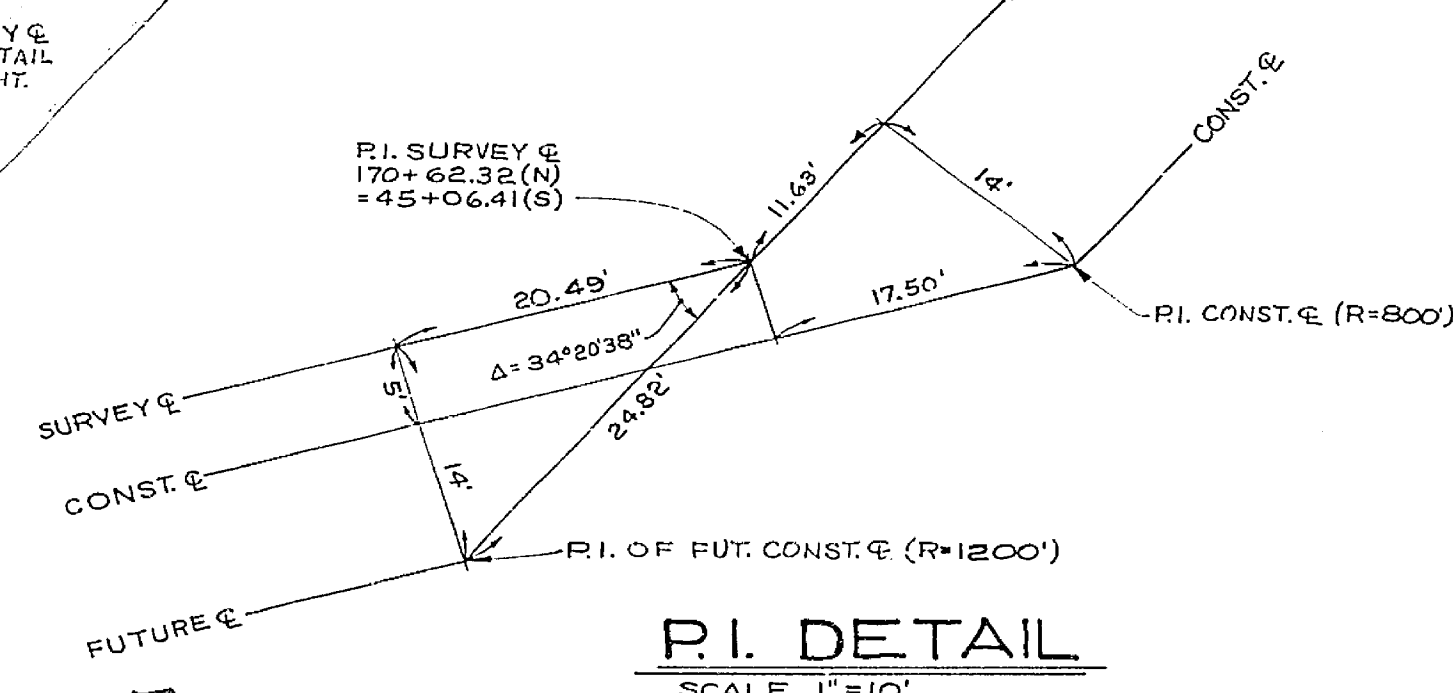
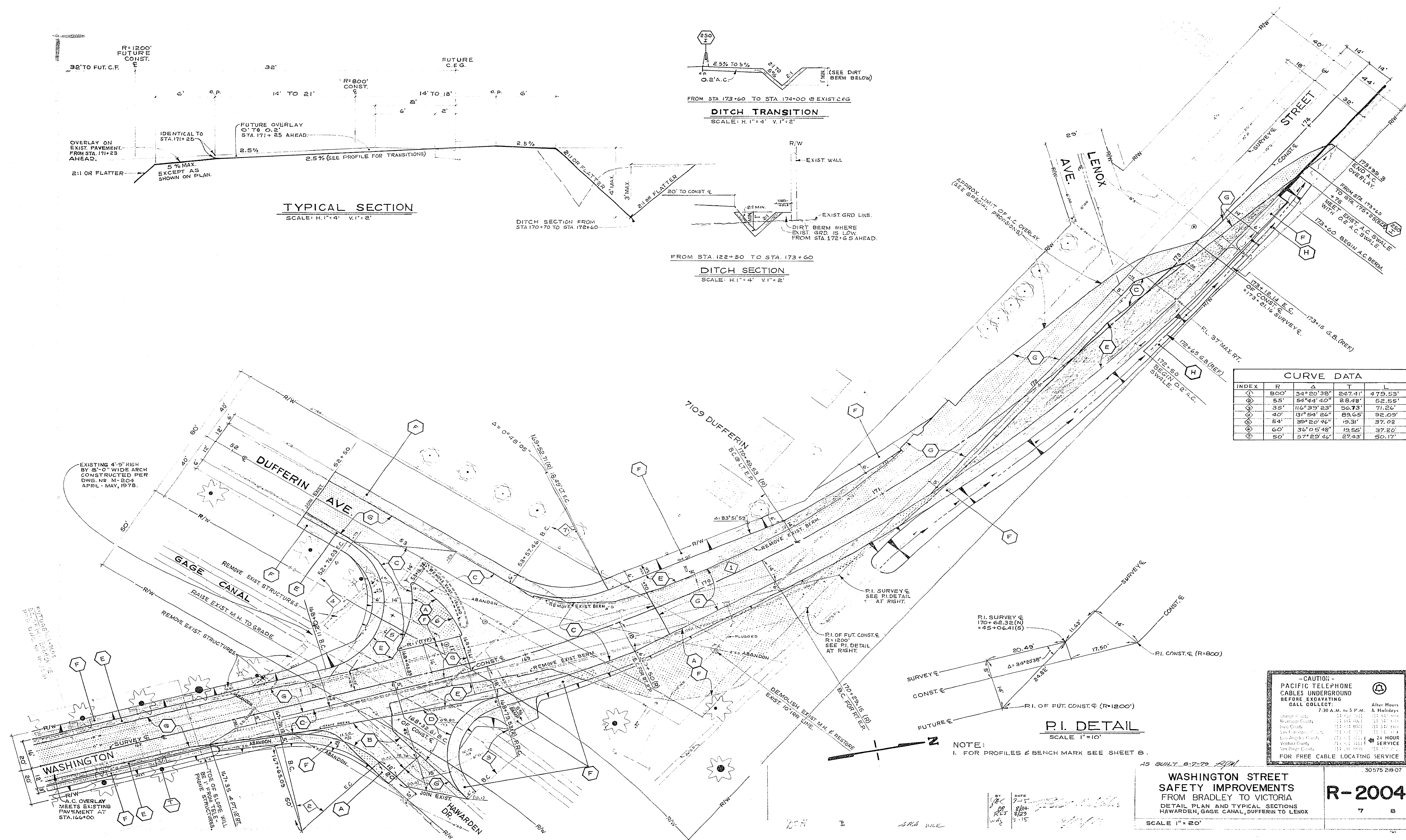
CITY OF RIVERSIDE PUBLIC WORKS DEPARTMENT		WASHINGTON STREET SAFETY IMPROVEMENTS FROM BRADLEY TO VICTORIA PLAN AND TYPICAL SECTIONS GAGE CANAL TO VICTORIA		R-2004 SHEET 6 OF 8
APPROVED BY _____ DATE	DESIGNED BY _____ DATE	CHECKED BY _____ DATE	DRAWN BY _____ DATE	

HORIZ SCALE: 1" = 40'



CURVE DATA

INDEX	R	Δ	T	L
1	800'	34° 20' 38"	247.41'	479.53'
2	55'	54° 44' 40"	28.48'	52.55'
3	35'	116° 35' 23"	56.73'	71.24'
4	40'	131° 54' 26"	89.55'	92.09'
5	54'	38° 20' 44"	19.31'	37.03'
6	60'	36° 05' 48"	19.55'	37.20'
7	50'	57° 29' 44"	27.43'	50.17'



CAUTION
PACIFIC TELEPHONE CABLES UNDERGROUND BEFORE EXCAVATING
CALL COLLECT: 7:30 A.M. to 5 P.M. After Hours & Holidays

Orange County	711-2200	711-2200
Riverside County	711-2200	711-2200
San Diego County	711-2200	711-2200
San Francisco County	711-2200	711-2200
San Jose County	711-2200	711-2200
San Mateo County	711-2200	711-2200
Santa Clara County	711-2200	711-2200
Stanislaus County	711-2200	711-2200
Yuba County	711-2200	711-2200

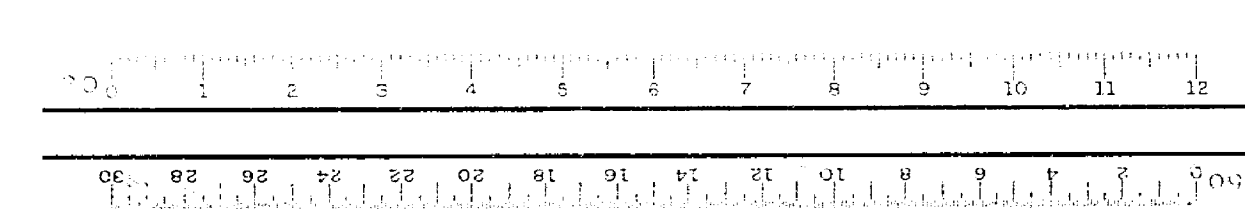
FOR FREE CABLE LOCATING SERVICE

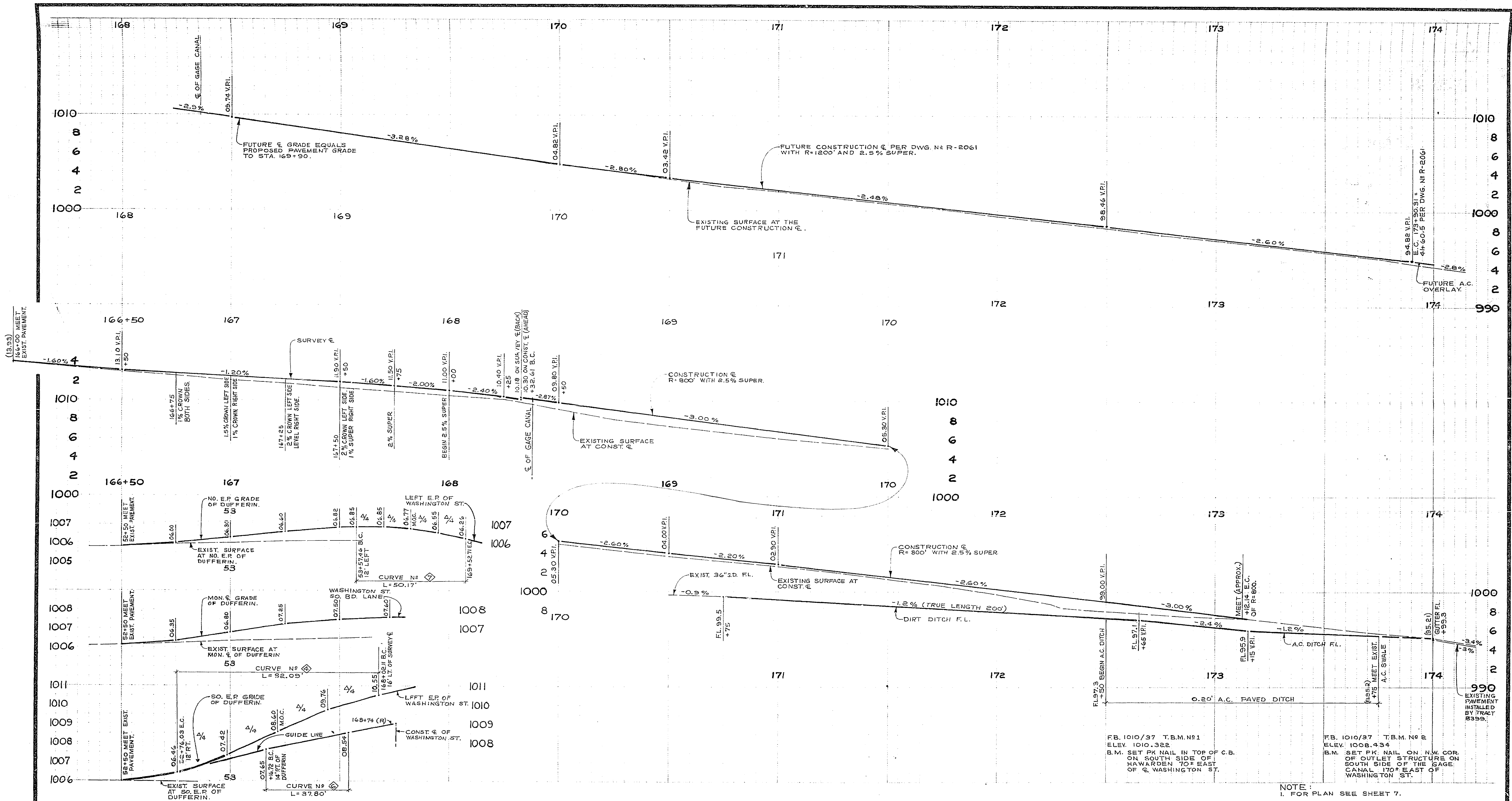
AS BUILT 8-7-79 RHM

WASHINGTON STREET SAFETY IMPROVEMENTS FROM BRADLEY TO VICTORIA
DETAIL PLAN AND TYPICAL SECTIONS
HAWARDEN, GAGE CANAL, DUFFERIN TO LENOX

R-2004

SCALE 1" = 20'





DUFFERIN PROFILES
 HORIZ. SCALE 1" = 20' VERT. SCALE 1" = 2'

FB. 1010/37 T.B.M. No 1
 ELEV. 1010.322
 B.M. SET PK NAIL IN TOP OF C.B.
 ON SOUTH SIDE OF
 HAWARDEN TO EAST
 OF WASHINGTON ST.

FB. 1010/37 T.B.M. No 2
 ELEV. 1008.434
 B.M. SET PK NAIL ON N.W. COR.
 OF OUTLET STRUCTURE ON
 SOUTH SIDE OF THE GAGE
 CANAL 170+ EAST OF
 WASHINGTON ST.

NOTE:
 1. FOR PLAN SEE SHEET 7.

CITY OF RIVERSIDE, CALIFORNIA PUBLIC WORKS DEPARTMENT				WASHINGTON STREET SAFETY IMPROVEMENTS FROM BRADLEY TO VICTORIA PROFILES FOR DUFFERIN AND WASHINGTON		ACCOUNT No. 30576-218-07 DRAWING NUMBER R-2004 SHEET 8 OF 8
APPROVED BY	BY	DATE	APPROVED BY	DATE	DATE	
PRINCIPAL ENGINEER			PUBLIC WORKS DIRECTOR			
TRAFFIC DIVISION						
DESIGNED BY	DRAWN BY	CHECKED BY				

