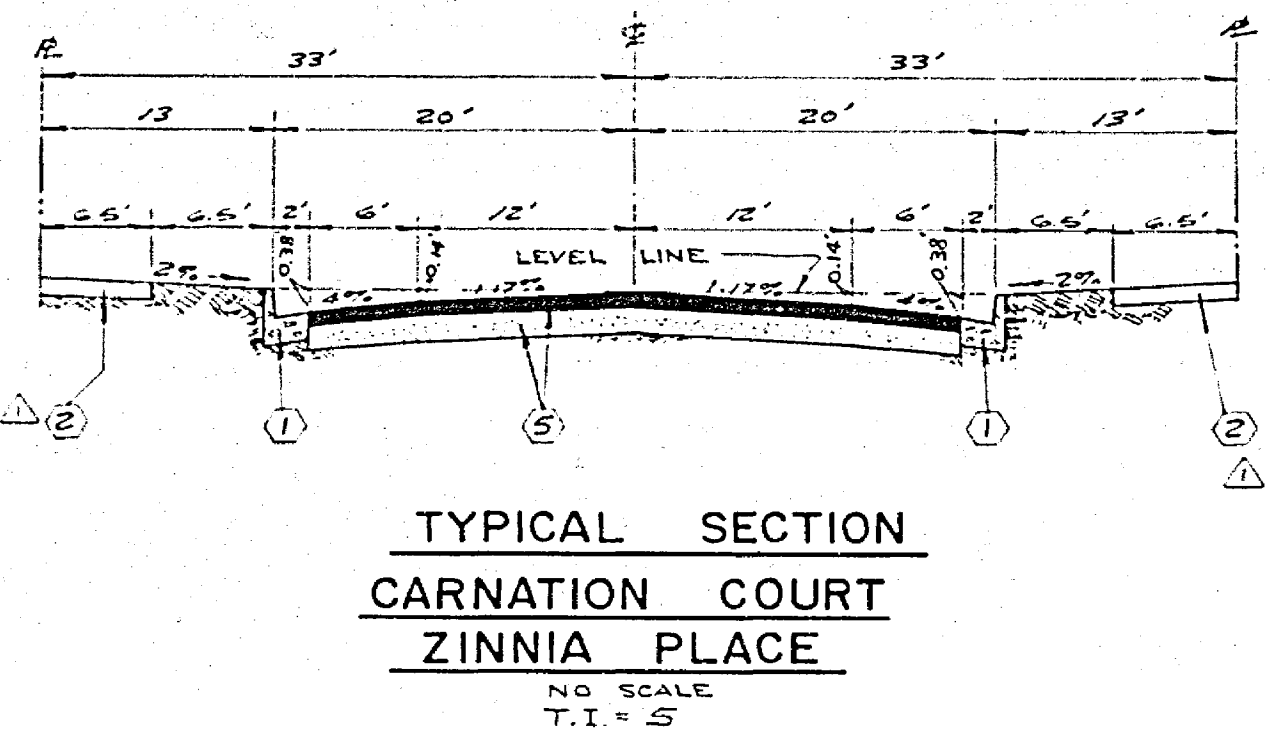


INDEX MAP
NO SCALE

BENCH MARK
ELEVATION 727.21 CITY OF RIVERSIDE C-7-D
TOP OF BRASS DISC IN WELL AT A.P. IN
ARLINGTON AVENUE, 500'2 EAST OF LAKE
STREET.



TYPICAL SECTION
CARNATION COURT
ZINNIA PLACE
NO SCALE
T.I. = 5

GENERAL NOTES

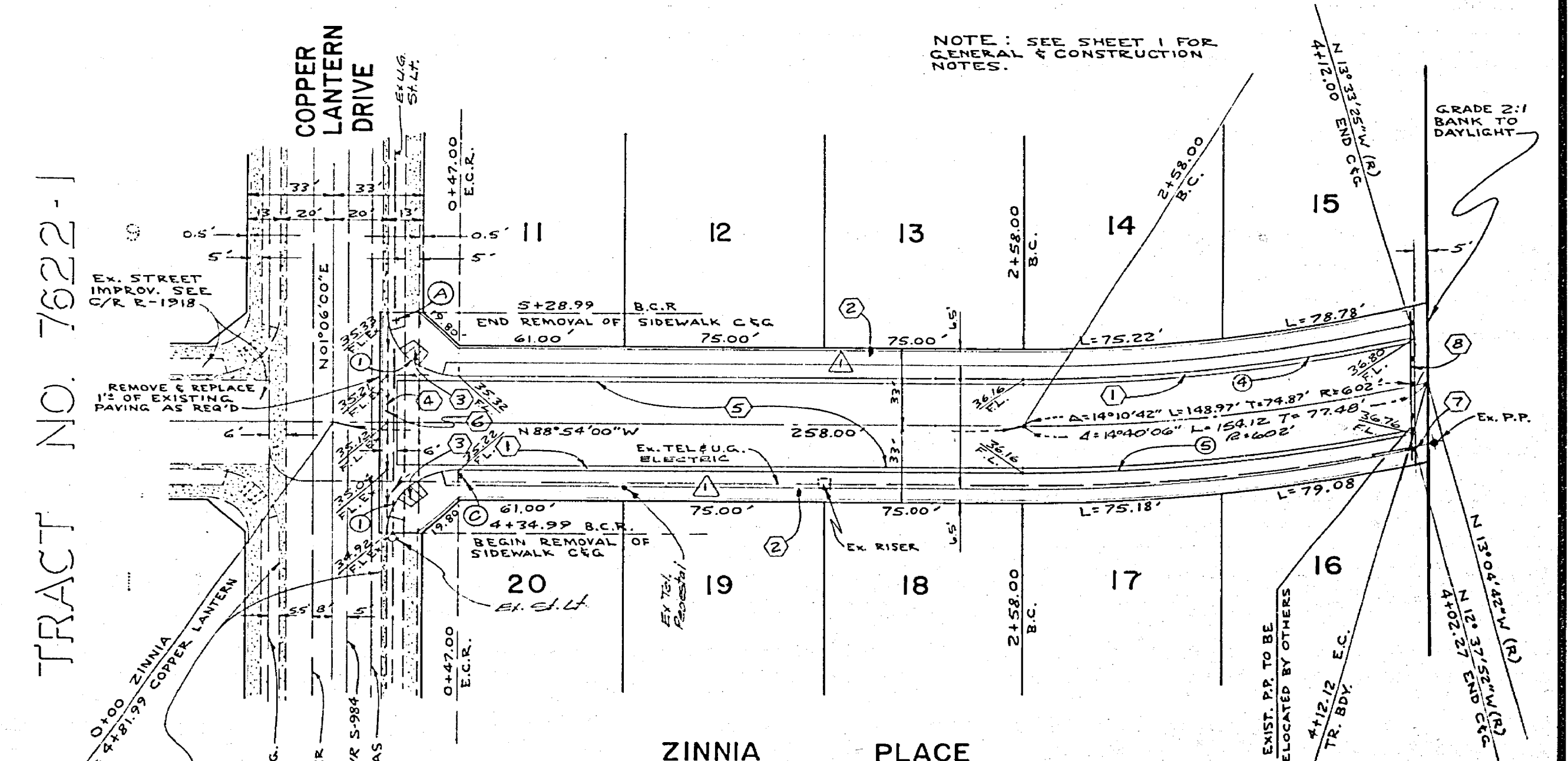
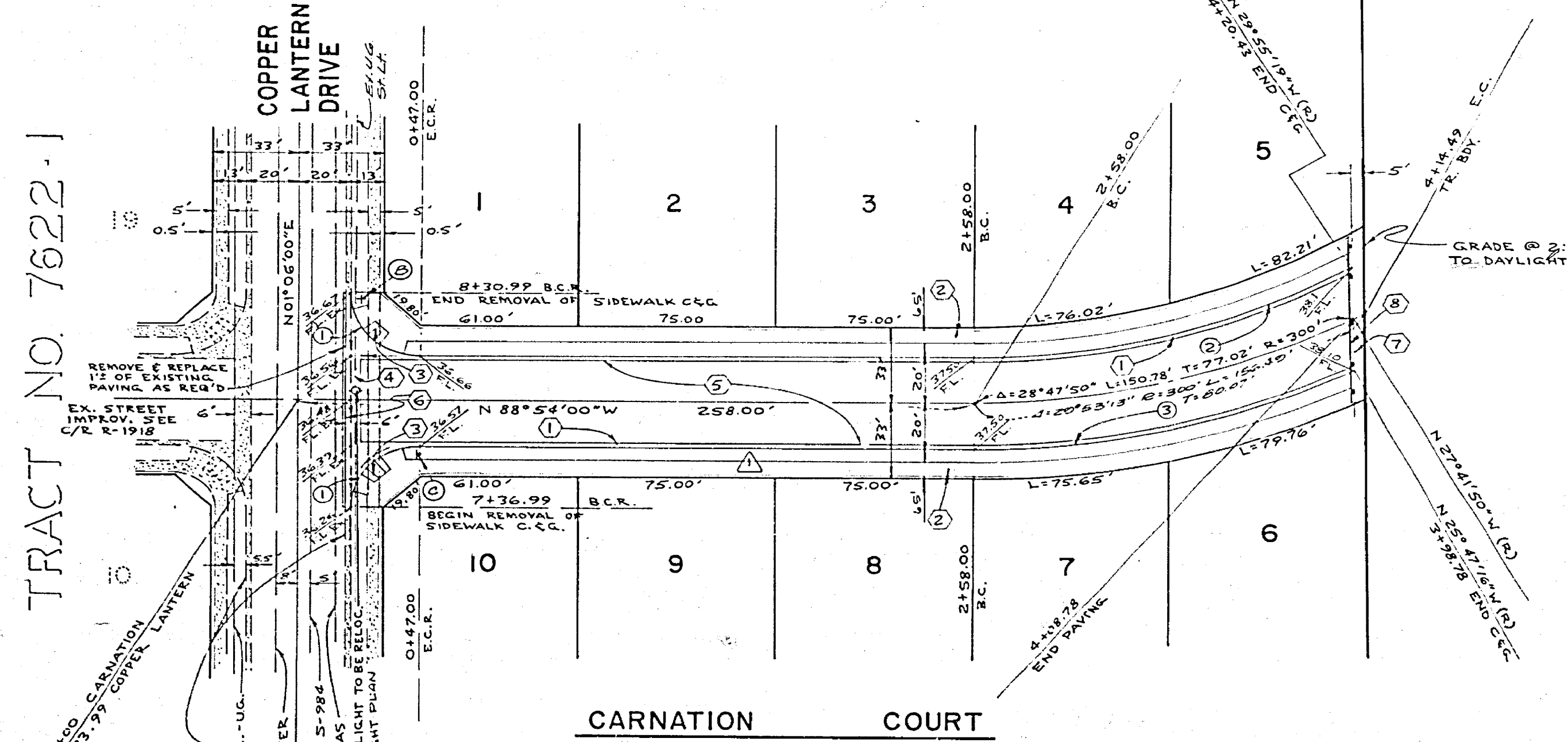
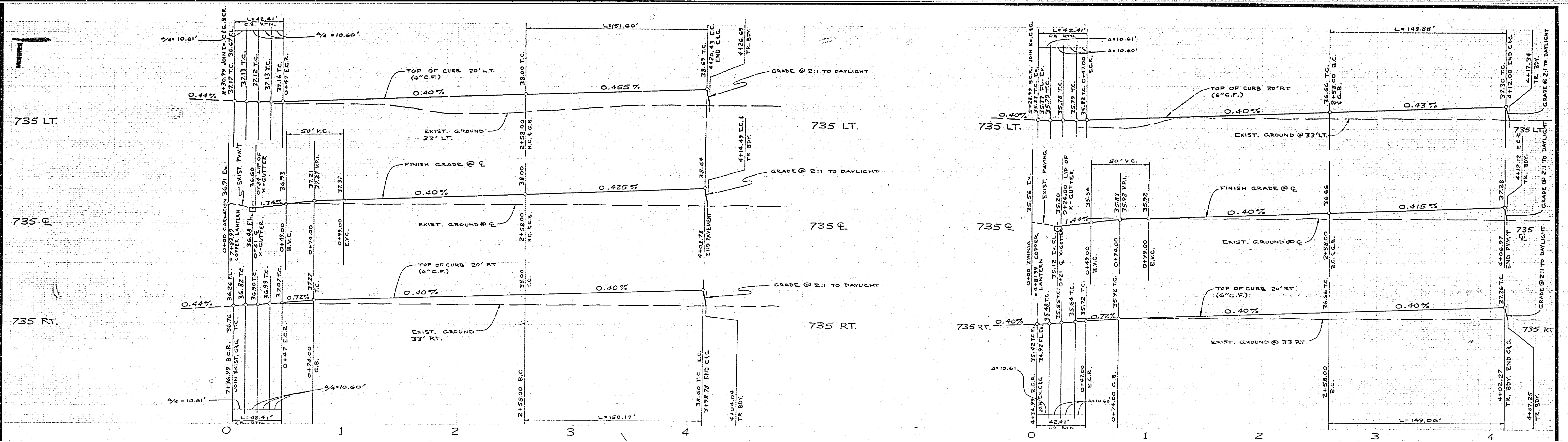
1. THE PRIVATE ENGINEER SIGNING THESE PLANS IS RESPONSIBLE FOR ASSURING THE ACCURACY AND ACCEPTABILITY OF THE WORK HEREON. IN THE EVENT OF DISCREPANCIES ARISING DURING CONSTRUCTION AS A RESULT OF ERRORS OR OMISSIONS, THE PRIVATE ENGINEER SHALL BE RESPONSIBLE FOR DETERMINING AN ACCEPTABLE SOLUTION AND REVISING THE PLANS FOR APPROVAL BY THE CITY.
2. CONSTRUCTION SHALL BE IN ACCORDANCE WITH THE STANDARD SPECIFICATIONS FOR PUBLIC WORKS CONSTRUCTION, 1976 EDITION AND PER CITY OF RIVERSIDE STANDARD DRAWINGS.
3. ALL FLAGGED ELEVATIONS SHALL BE STAKED IN THE FIELD BY THE PRIVATE ENGINEER.
4. THE SUBDIVIDER SHALL ARRANGE FOR A SOIL TEST TO BE MADE BY A SOILS ENGINEER AFTER THE STREETS HAVE BEEN PREPARED TO ROUGH GRADE. DEPTH OF BASE MATERIAL AND A.C. PAVING SHALL BE DETERMINED BY THE CITY OF RIVERSIDE DESIGN STANDARDS AND TEST PROCEDURES.
5. LOCATION AND SIZE OF DRIVEWAY APPROACHES (STD. 302) TO BE DETERMINED AT THE TIME OF CONSTRUCTION, AS APPROVED BY THE ENGINEER.
6. TRAFFIC CONTROL SIGNS MUST BE IN PLACE PRIOR TO OPENING STREETS.
7. IT SHALL BE THE RESPONSIBILITY OF THE CONTRACTOR TO CLEAR THE RIGHT OF WAY IN ACCORDANCE WITH THE PROVISION OF LAW AS IT AFFECTS EACH UTILITY INCLUDING IRRIGATION LINES AND APPURTENANCES AND AT NO COST TO THE CITY.
8. SEE "STREET LIGHTING PLAN" FOR QUANTITY AND LOCATION OF REQUIRED STREET LIGHTS.
9. CURB & GUTTER SHALL BE STAKED AT 25' INTERVALS AND 2' OFFSET.
10. 4"x4" BLOCKOUTS FOR MAILBOXES REQUIRED IN CURB SIDEWALK.

CONSTRUCTION NOTES

1. CONSTRUCT CITY OF RIVERSIDE STD. No. 300, CURB AND GUTTER, TYPE I, 6" C.P.
2. CONSTRUCT CITY OF RIVERSIDE STD. No. 325, PROPERTY LINE SIDEWALK.
3. CONSTRUCT CITY OF RIVERSIDE STD. No. 304, WHEELCHAIR RAMP.
4. CONSTRUCT CITY OF RIVERSIDE STD. No. 220, CROSS GUTTER AND APRONS.
5. PLACE 2 1/2" A.C. PAYEMENT OVER 4" D.G. BASE MATERIAL PER TYPICAL SECTION, OR 3" A.C. OVER COMPACTED NATIVE.
6. REMOVE EXISTING SIDEWALK, CURB & GUTTER.
7. CONSTRUCT 2"x4" REDWOOD HEADER.
8. CONSTRUCT CITY OF RIVERSIDE STD. No. 180 BARRICADE.

TRAFFIC CONTROL & STREET NAME SIGN SCHEDULE		
(A)	ZINNIA PL	8100
	COPPER LANTERN DR.	6400
(B)	CARNATION CT	8100
	COPPER LANTERN DR.	6500
(C)	W53 (Not a through Street) 24"x24"	

ALBERT A. WEBB ASSOCIATES CIVIL ENGINEERS RIVERSIDE, CALIFORNIA APPROVED BY <i>[Signature]</i> DATE 4/28/77 R.E. No. 9876	CITY OF RIVERSIDE, CALIFORNIA PUBLIC WORKS DEPARTMENT APPROVED BY <i>[Signature]</i> DATE 8/18/77 DIRECTOR OF PUBLIC WORKS	STREET PLAN AND PROFILE TRACT 7622	ACCOUNT No. DRAWING NUMBER R-2024
		INDEX MAP	SHEET 1 OF 2 77-123-A
W.O. 77-123 FOR: HOME & COUNTRY P.D. 1029	DESIGNED BY R.L.T. DRAWN BY <i>[Signature]</i> CHECKED BY <i>[Signature]</i>	SCALE: AS NOTED	



TRACT NO. 7622-1

TRACT NO. 7622-1

CURB CURVE DATA

No.	Angle	Radius	Chord	Offset
1	90°00'00"	27.00'	45.41'	27.00'
2	31°01'19"	285.00'	151.65'	27.71'
3	26°53'16"	325.00'	150.17'	26.99'
4	14°39'25"	285.00'	148.88'	24.85'
5	12°33'22"	225.00'	149.06'	24.82'

BENCH MARK
 ELEVATION 733.31 CITY OF RIVERSIDE G-2-D
 TOP OF BRASS DISC IN WELL AT A.P. IN
 ARLINGTON AVENUE, 500'± EAST OF LAKE
 STREET.

ALBERT A. WEBB ASSOCIATES
 CIVIL ENGINEERS
 RIVERSIDE, CALIFORNIA
 APPROVED BY: *[Signature]* DATE: 4/28/77
 R.E. No. 9876

W.O. 77-123 FOR HOME AND COUNTRY F.B. 1029
 DESIGNED BY: R.L.T. DRAWN BY: J.M.C. CHECKED BY:

CITY OF RIVERSIDE, CALIFORNIA
 PUBLIC WORKS DEPARTMENT
 APPROVED BY: *[Signature]* DATE: 5/15/77
 DIRECTOR OF PUBLIC WORKS

STREET PLAN & PROFILE
 TRACT 7622
 CARNATION COURT
 ZINNIA PLACE
 SCALE: HORIZ. 1"=40' VERT. 1"=4'

ACCOUNT NO.
 DRAWING NUMBER
R-2024
 SHEET 2 OF 2
 77-123-A

Public Utilities Dept., Electric Division
 Approved by: *[Signature]* 5/9/77
 Chief Utilities Engineer

CAUTION -
 PACIFIC TELEPHONE
 CABLES UNDERGROUND
 BEFORE EXCAVATING
 CALL COLLECT

