

GENERAL NOTES

1. Construction shall be in accordance with the Standard Specifications for Public Works Construction, Edition and per City of Riverside Standard Drawings, 1979.
2. The developer shall arrange for soil test to be made by a soils engineer after the streets have been prepared to rough grade. Depth of base material and A.C. paving shall be determined by the City of Riverside design standards and test procedures.
3. All flagged elevations shall be stated in the field by the private Engineer.
4. Location of driveway approaches (Std. 302) to be determined at the time of construction as approved by the Traffic Engineer.
5. Traffic control signs must be in place prior to opening streets to traffic.
6. Trim existing edge of pavement where new pavement joins to a smooth straight line. Construct 1/2" up curbs as shown on the plans and provide paving as directed in the field to produce a smooth surface. Apply concrete sealant over the 1/2" face.
7. It shall be the responsibility of the contractor to clear the right of way in accordance with the provisions of law as it affects such utility, including irrigation lines and appurtenances, and at no cost to the City.
8. curb and gutter to be stated on a 3' offset at 25' intervals.
9. See street lighting plans for quantity and location of required street lights.
10. The contractor shall contact the Public Service Department (781-7251) to pick up any existing Std. 100 barricades that are being removed. The City Inspector will make the final determination on whether barricades can be reduced.
11. 4"x4" blockouts for mail boxes required in curb sidewalk.

CONSTRUCTION NOTES

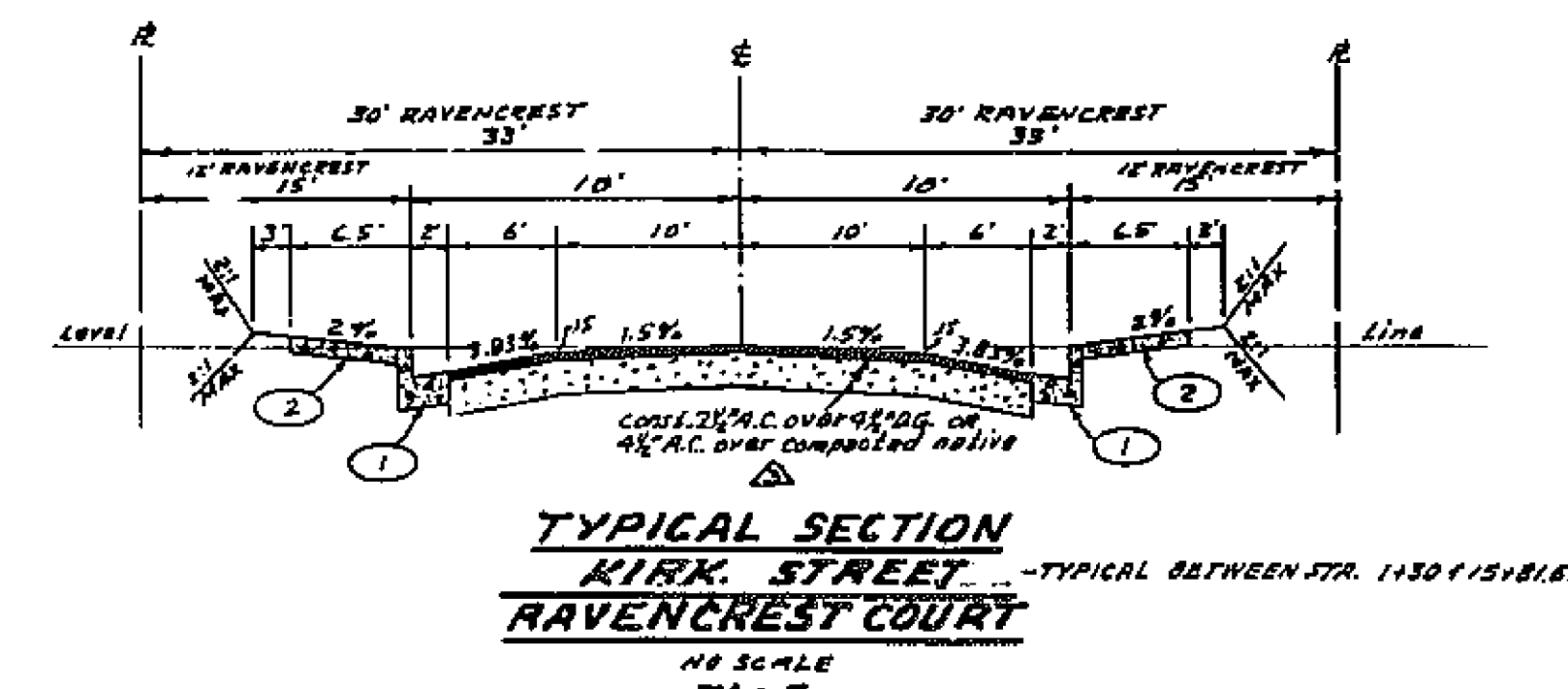
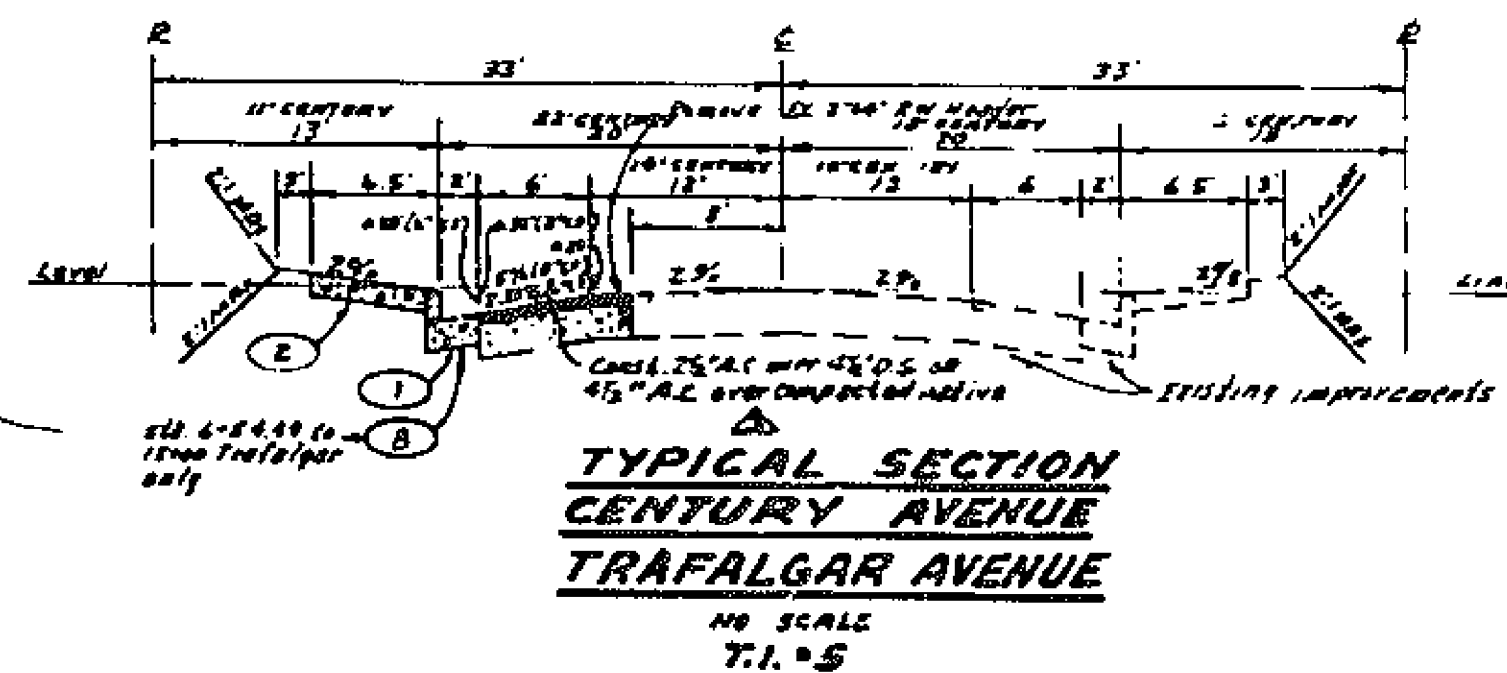
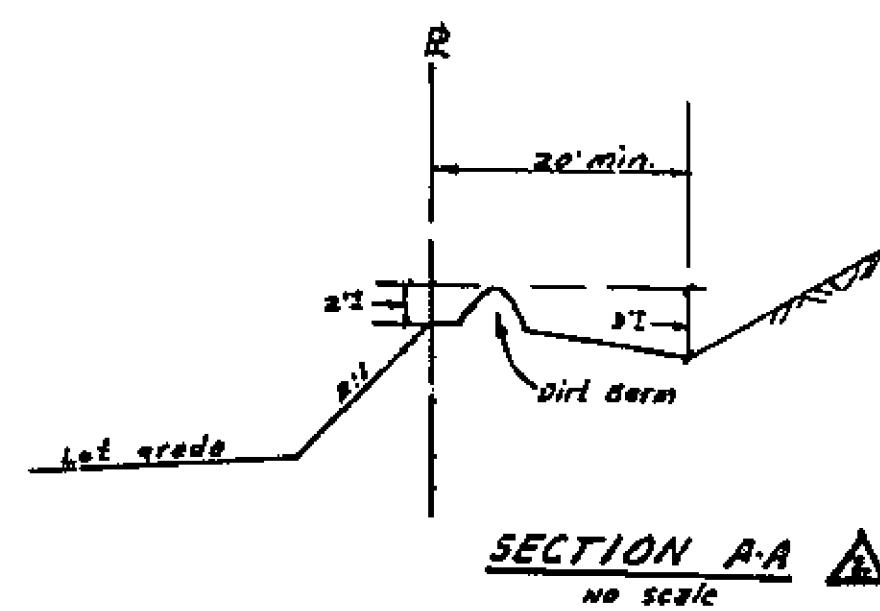
1. construct standard 200 curb & gutter (0' C/S)
2. construct standard 325 curbline sidewalk
3. construct paving and base per typical section
4. construct standard 230 cross gutter (width as shown on plan)
5. construct standard 304 wheel chair ramp
6. construct 2"x4" Roadway Header
7. construct standard 180 barricade
8. construct standard 200 curb & gutter (0' C/S)
9. construct 6' wide 2" A.C. swale

NOTE:

The private engineer signing these plans is responsible for the accuracy and acceptability of the work shown. In the event of discrepancies arising during construction, the private engineer shall be responsible for determining an acceptable solution and revising the plans for approval by the City.

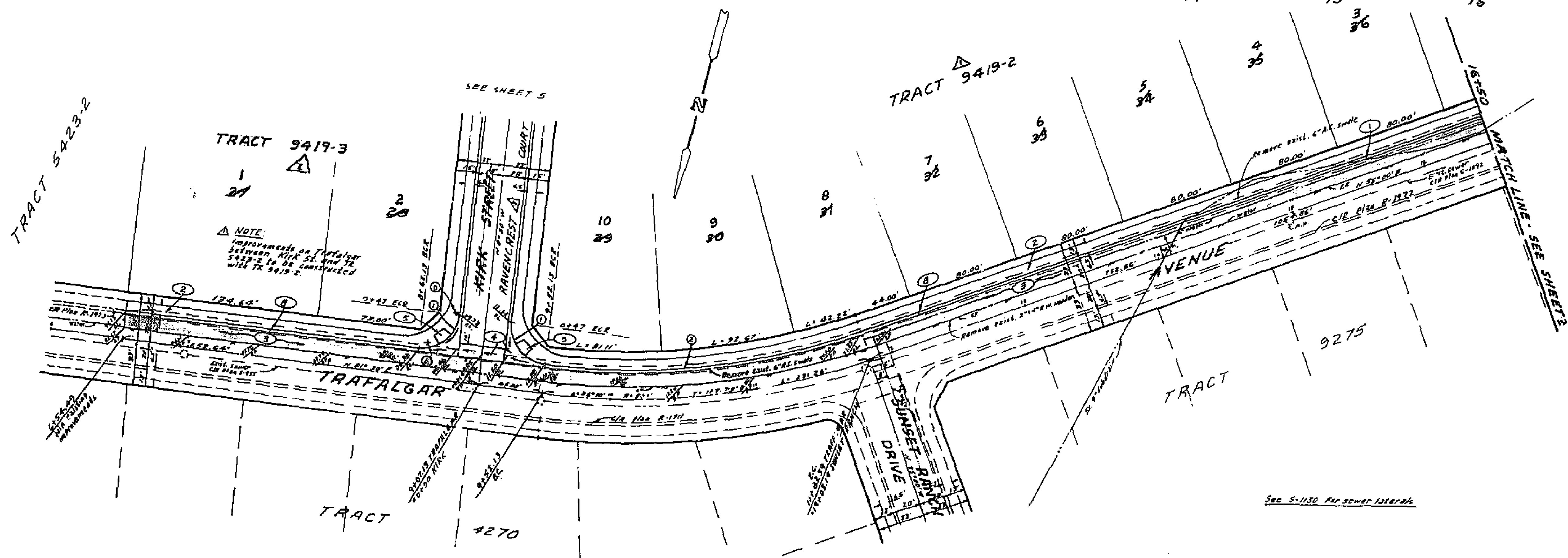
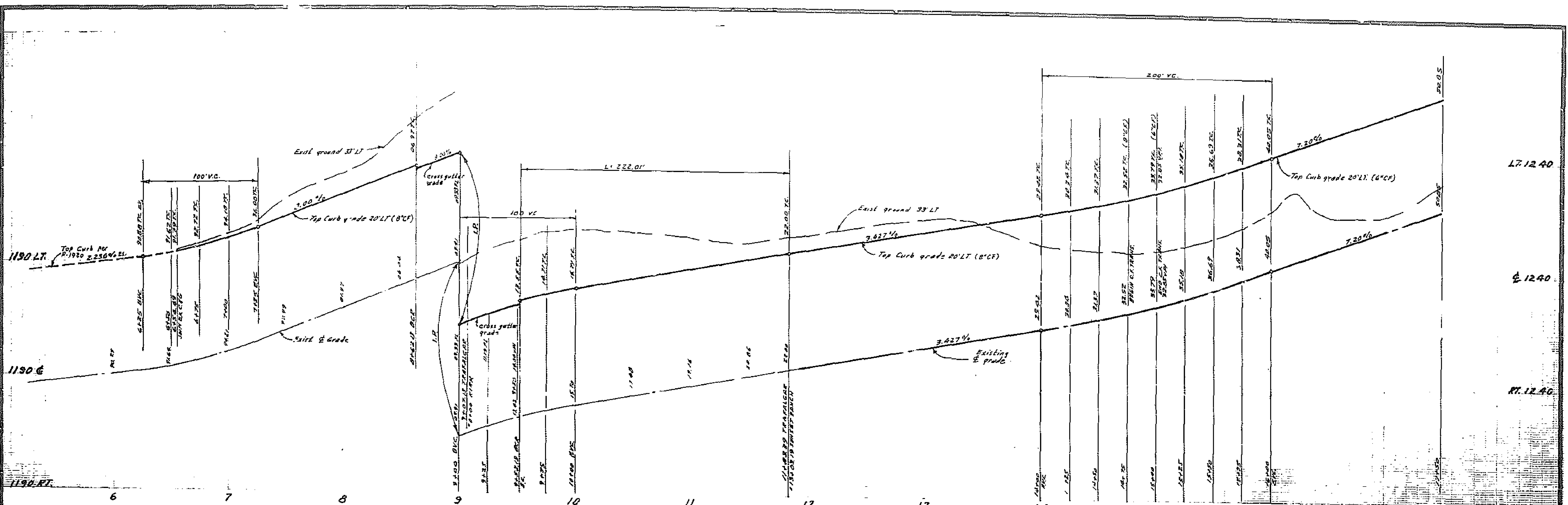
STREET NAME AND TRAFFIC SIGN SCHEDULE		
(A)	TRAFALGAR AVE	2:00
(A)	KIRK RAVENCREST CT	6:00 2:00
(A)	KIRK ST	6:00
(A)	RAVENCREST CT	2:00
(C)	TRAFALGAR AVE	2:00
(C)	KIRK ST	6:00
(D)	STOP SIGN, RI 30" OCTAGON	
(E)	W 53 (NOT A THROUGH STREET) 24" X 24"	
(F)	CENTURY AVE	6:00
(F)	TRAFALGAR AVE	2:00

TRACT 9419-1



BENCH MARK: Elev. 136.542
C/R S.M. No. 5-T-C. Be. rail in curb rebate S.E. Corner Chicago and Alessandro.

ALBERT A. WEBB ASSOCIATES CIVIL ENGINEERS RIVERSIDE, CALIFORNIA APPROVED BY: <i>[Signature]</i> DATE: 5/2/77 R.E. No. 3876 W.D. 77-46 FOR A.C. Haindy P.D. 1022	CITY OF RIVERSIDE, CALIFORNIA PUBLIC WORKS DEPARTMENT APPROVED BY: <i>[Signature]</i> TRAFFIC DIVISION CHIEF PUBLIC WORKS ENGINEER	STREET PLAN & PROFILE INDEX TRACT 9419 SHEET 1 OF 2 77-46-A	ACCOUNT NO. DRAWING NUMBER R-2029
			DATE: 10-5-77 SCALE: 1" = 100'



NOTE:
Improvements on Trafalgar between Kirk St and Tr 5423-2 to be constructed with TR 9419-2.

CURVE DATA				
NO	R	Δ	T	L
①	27'	90°00'00"	27.00'	42.41'
②	480'	26°30'00"	115.02'	222.01'

ALBERT A. WEBB ASSOCIATES
CIVIL ENGINEERS
RIVERSIDE, CALIFORNIA
APPROVED BY: *[Signature]* DATE: 5/1/77
R.E. No. 9876
WD 77-46 FOR AC Healdy

DESIGNED BY: BEL DRAWN BY: BEL CHECKED BY: [Signature]
DATE: 10-5-77

CITY OF RIVERSIDE, CALIFORNIA
PUBLIC WORKS DEPARTMENT
APPROVED BY: [Signature] DATE: 10-5-77
DIRECTOR OF PUBLIC WORKS

STREET PLAN AND PROFILE
TRAFALGAR AVENUE
TRACT 9419
SCALE: 1" = 40' Horiz., 1" = 8' Vert.

ACCOUNT No. [Blank]
DRAWING NUMBER: **R-2029**
SHEET: **2 OF 7**
77-46-A

BENCH MARK: ELEV 124.54
C&N E.M. No. G-7-C R.V. 8011 in curb return
S.E. corner Chicago and Alessandro.

LT. 1290

E. 1290

RT. 1290

1250 LT.

1250 E.

1250 RT.

16

17

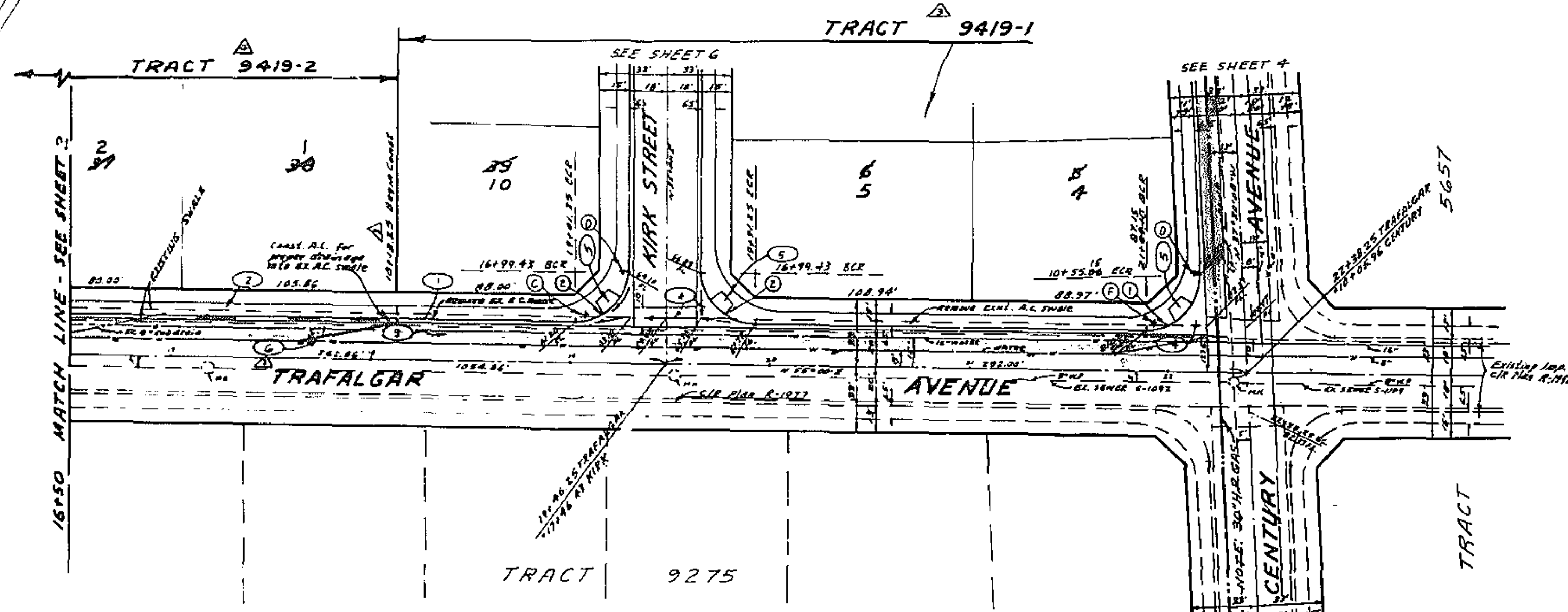
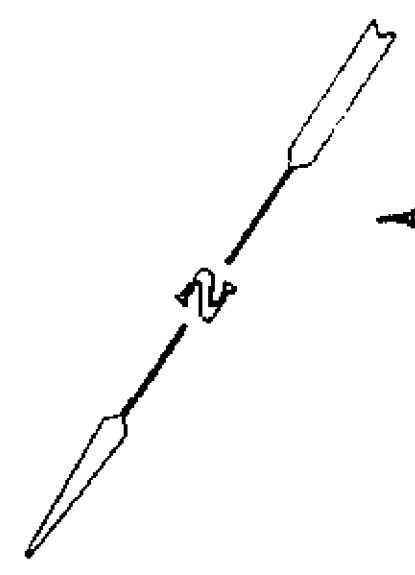
18

19

20

21

22



CURVE DATA

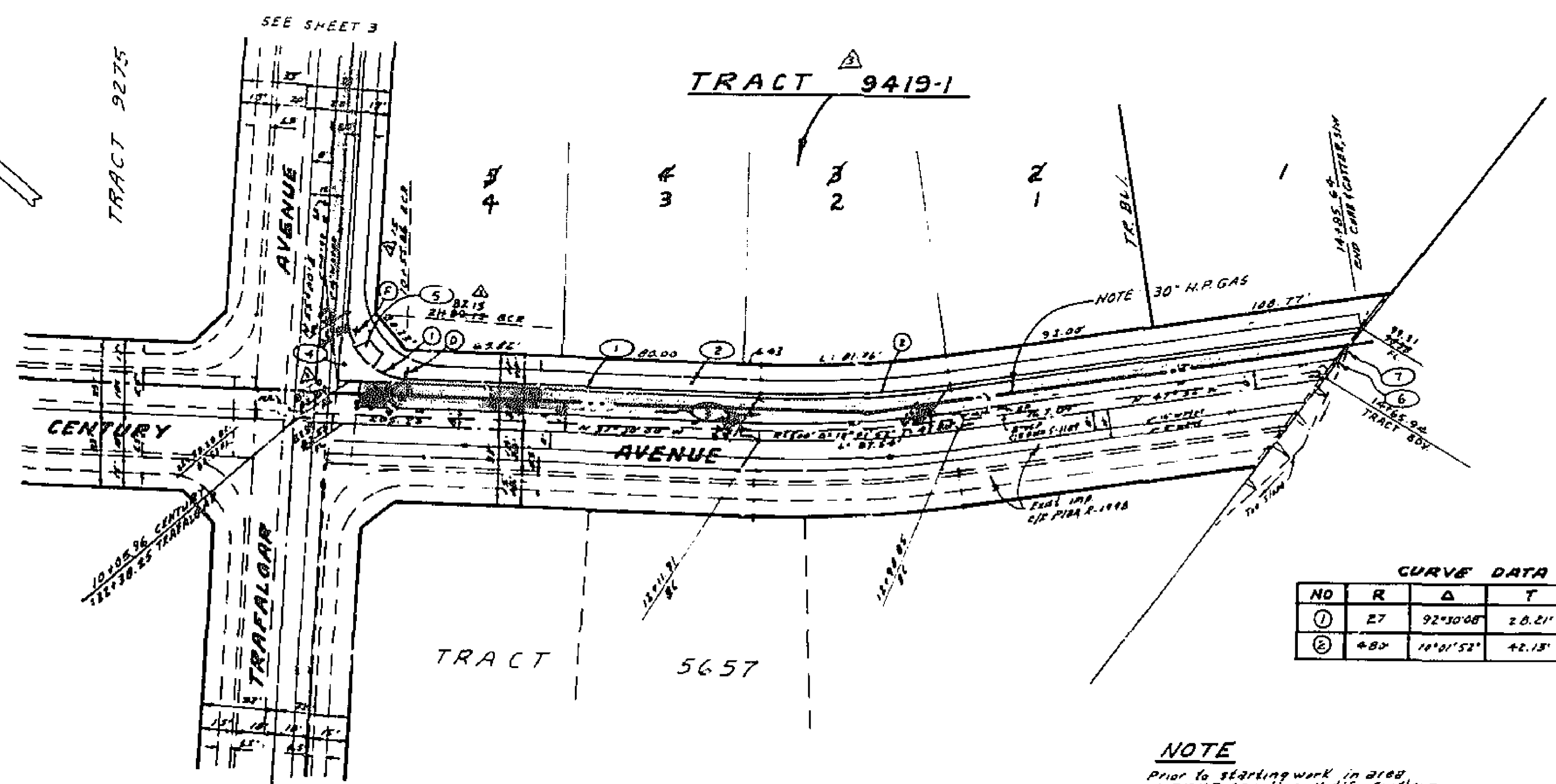
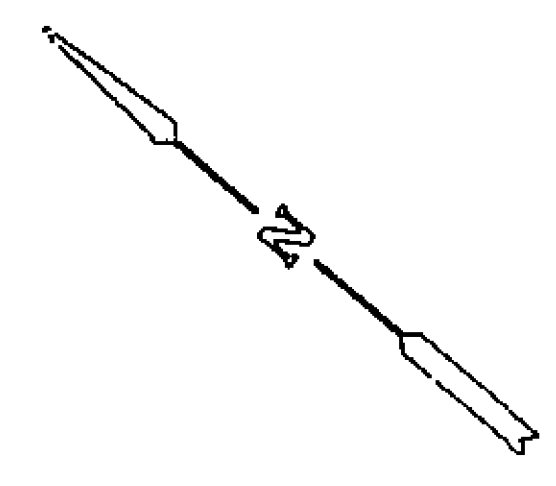
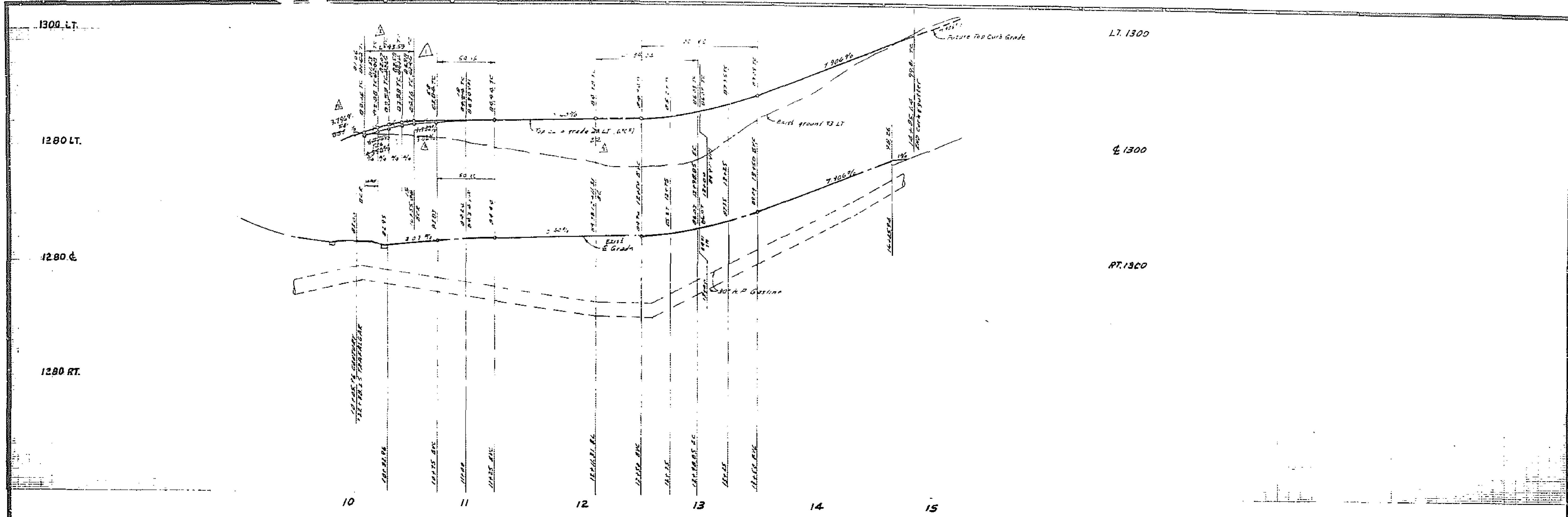
NO	R	Δ	T	L
(1)	27'	92°30'00"	28.31'	42.57'
(2)	27'	90°	27.00'	42.41'

NOTE:
 Prior to starting work in
 pits of 30" or less use
 utility sounding stick.
 Call to Department Station,
 Tel. No. 714-845-2417.

See S-1130 for sewer laterals

BENCH MARK: Elev. 1126.542
 C&N R.M. No. C-7-C RR. 1911 in curb return
 S.E. CORNER Chicago and Alessandro.
 2" AS BUILT 1-5-82 EAST

ALBERT A. WEBB ASSOCIATES CIVIL ENGINEERS RIVERSIDE, CALIFORNIA APPROVED BY: <i>[Signature]</i> DATE: 5/8/77 R.E. No. 5826 W.D. 77-46 FOR A.C. Nejedly P.M. 10.22		CITY OF RIVERSIDE, CALIFORNIA PUBLIC WORKS DEPARTMENT APPROVED BY: <i>[Signature]</i> DATE: 5/8/77 PRINCIPAL ENGINEER TRAFFIC DIVISION CHEFFRE WEA EBER		STREET PLAN AND PROFILE TRAFALGAR AVENUE TRACT 9419 SCALE: 1" = 40' HORIZ., 1" = 8' VERT.		ACCOUNT NO. R-2029 SHEET 3 OF 7 77-46-A	
---	--	---	--	---	--	--	--



CURVE DATA

NO	R	Δ	T	L
①	27	92°30'00"	20.21'	43.59'
②	400	11°01'52"	42.13'	84.04'

NOTE
 Prior to starting work in area of 30" H.P. Gas Line, notify Southern California Gas Co. Beaumont Station, Tel. No. 714-845-2617.

See S-1130 for sewer laterals

BENCH MARK: Elev 1186.542
 C/R B.M. No. G-7-C R.E. 1911 in curb 18200
 S.E. corner Chicago and Alessandro

APPROVED BY
K.V. Sokone
 SOUTHERN CALIF GAS CO
 DATE 7-5-77

ALBERT A. WEBB ASSOCIATES
 CIVIL ENGINEERS
 RIVERSIDE, CALIFORNIA
 APPROVED BY *S. D. N. [Signature]* DATE 5/1/77
 R.E. No. 9876
 W.D. 77-46 FOR A.C. No. 114 P.L. 1022

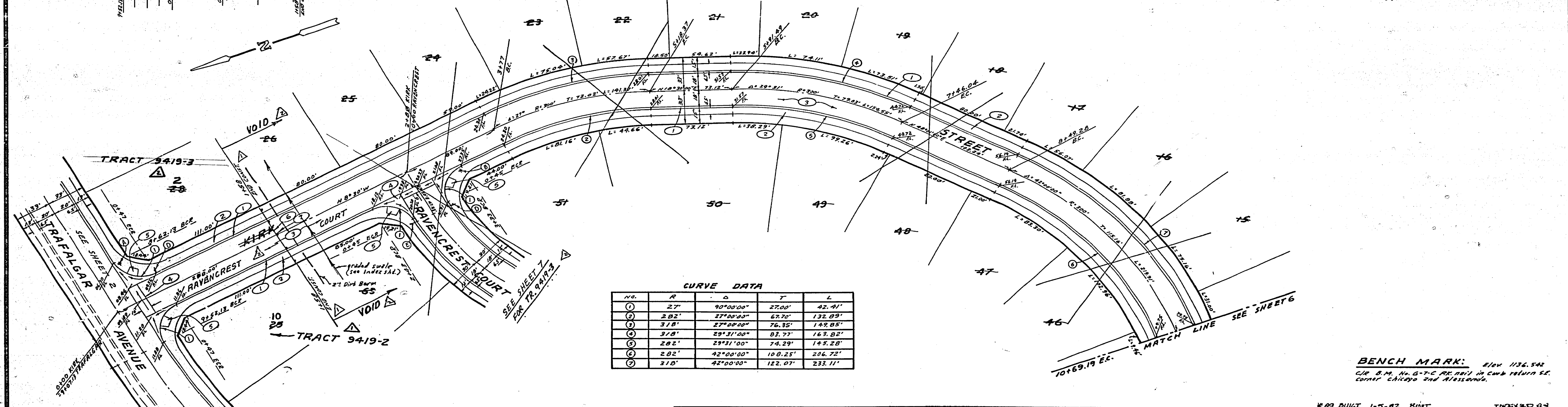
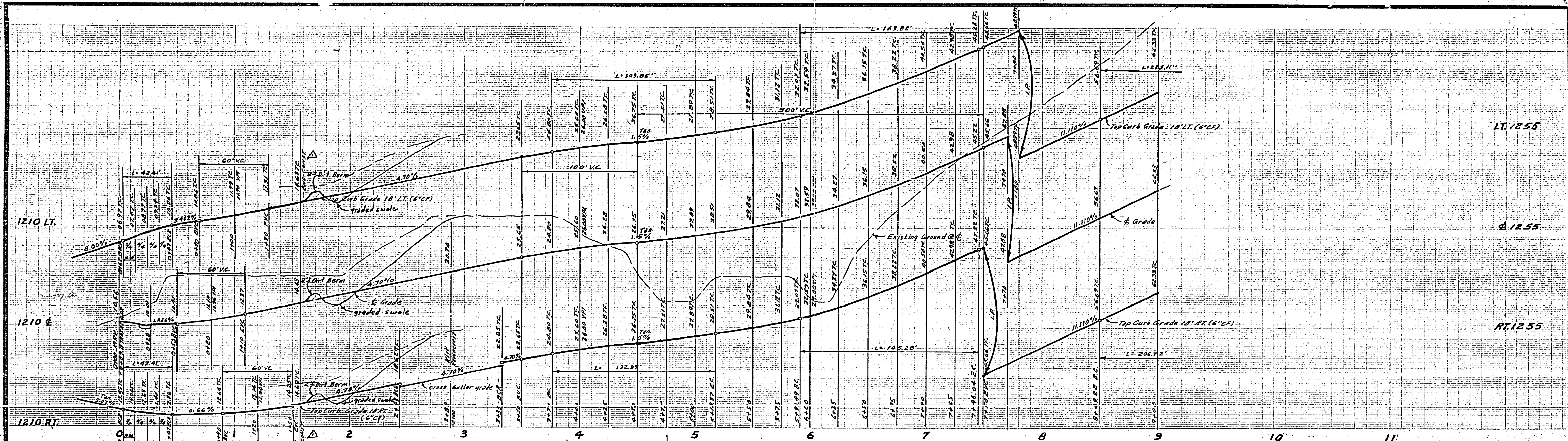
DESIGNED BY *BEL* DRAWN BY *BEL* CHECKED BY

CITY OF RIVERSIDE, CALIFORNIA
 PUBLIC WORKS DEPARTMENT
 APPROVED BY *[Signature]*
 PRINCIPAL ENGINEER
 PARK DEPARTMENT
 TRAFFIC DIVISION
 CHIEF PUBLIC WORKS ENGINEER
 DATE 10-5-77

STREET PLAN AND PROFILE
 CENTURY AVENUE
 TRACT 9419
 # AS BUILT 1-5-62 BRET

ACCOUNT NO.
 DRAWING NUMBER
R-2029
 SHEET 4 OF 7
 77-46-A

SCALE: 1" = 40' Horiz., 1" = 8' Vert.

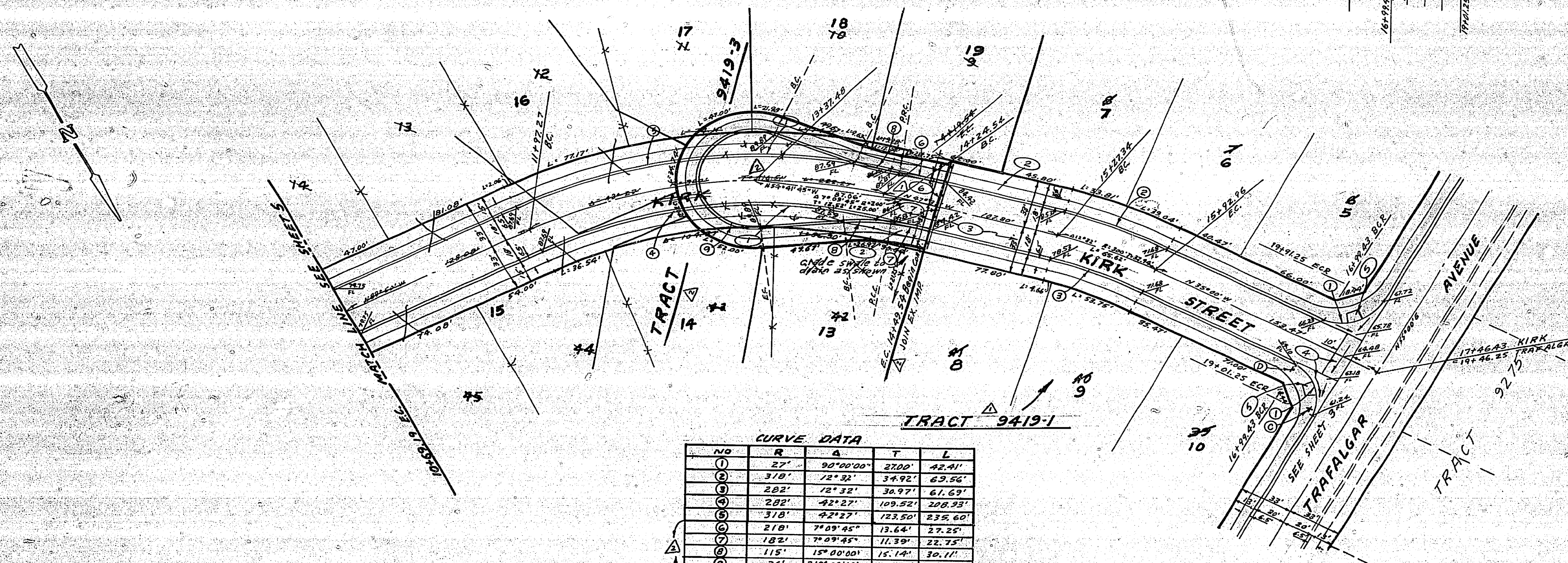
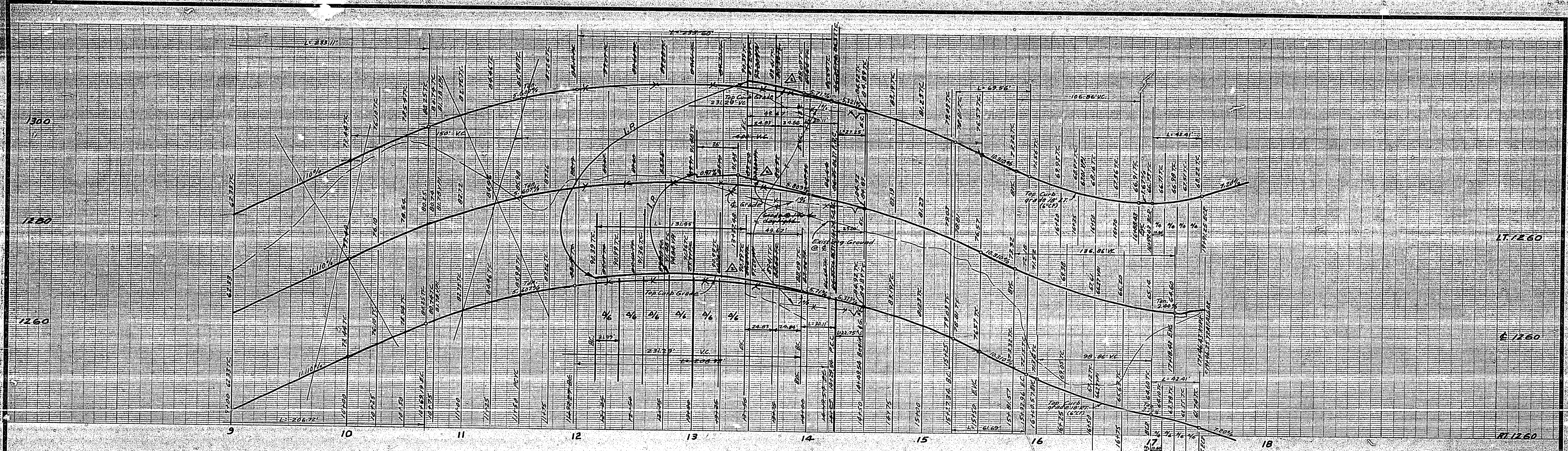


CURVE DATA

NO.	R	Δ	T	L
1	27'	90°00'00"	27.00'	42.41'
2	282'	27°00'00"	62.70'	132.89'
3	318'	27°00'00"	76.35'	142.85'
4	318'	29°31'00"	83.77'	163.82'
5	282'	29°31'00"	74.29'	145.28'
6	282'	42°00'00"	108.25'	204.72'
7	318'	42°00'00"	122.07'	233.11'

BENCH MARK: Elev 1136.542
 CUR. B.M. No. G-7-C PERMIT IN CURB RETURN S.E.
 CORNER CHICAGO AND MISSOURI.

ALBERT A. WEBB ASSOCIATES CIVIL ENGINEERS RIVERSIDE, CALIFORNIA APPROVED BY: <i>[Signature]</i> DATE: 5/1/77 R.E. No. 2826 <small>W.D. 77-46 FOR A.C. Neidly F.B. 1032</small>	CITY OF RIVERSIDE, CALIFORNIA PUBLIC WORKS DEPARTMENT APPROVED BY: <i>[Signature]</i> <small>PRINCIPAL ENGINEER PARK DEPARTMENT TRAFFIC DIVISION CHIEF P.W. ENGINEER</small>	STREET PLAN AND PROFILE HARK STREET RAVENCREST COURT TRACT 9419 SCALE: 1" = 40' HORIZ., 1" = 8' VERT. DATE: 10-1-77	ACCOUNT NO. DRAWING NUMBER R-2029 SHEET 5 OF 7 77-46-A
--	--	--	--

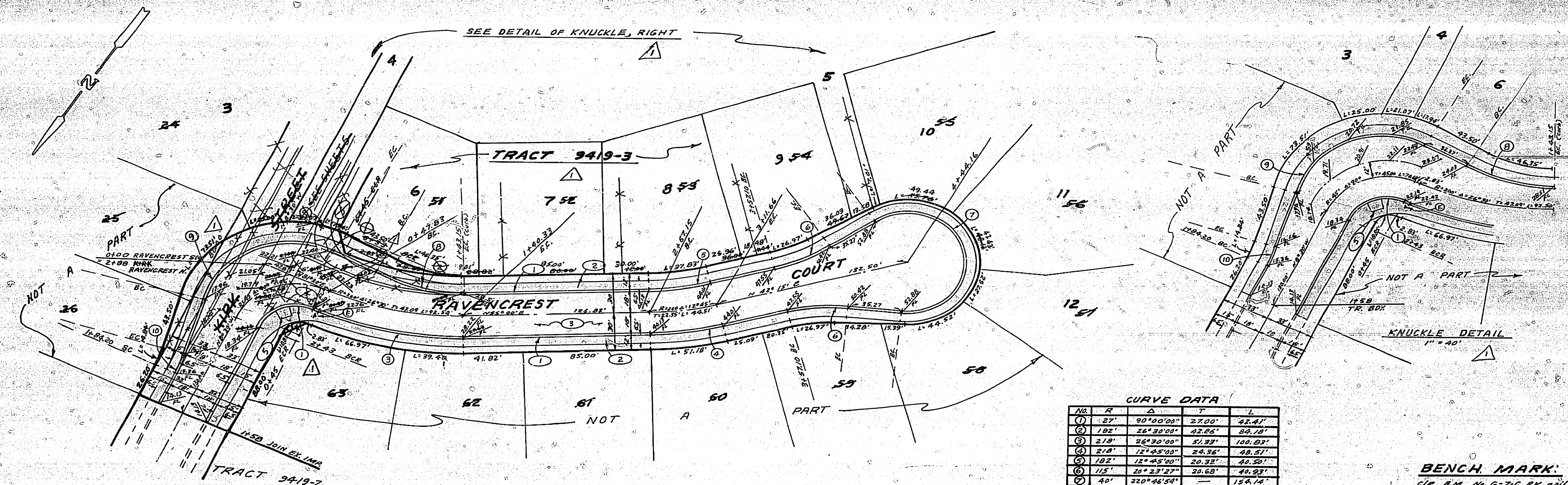
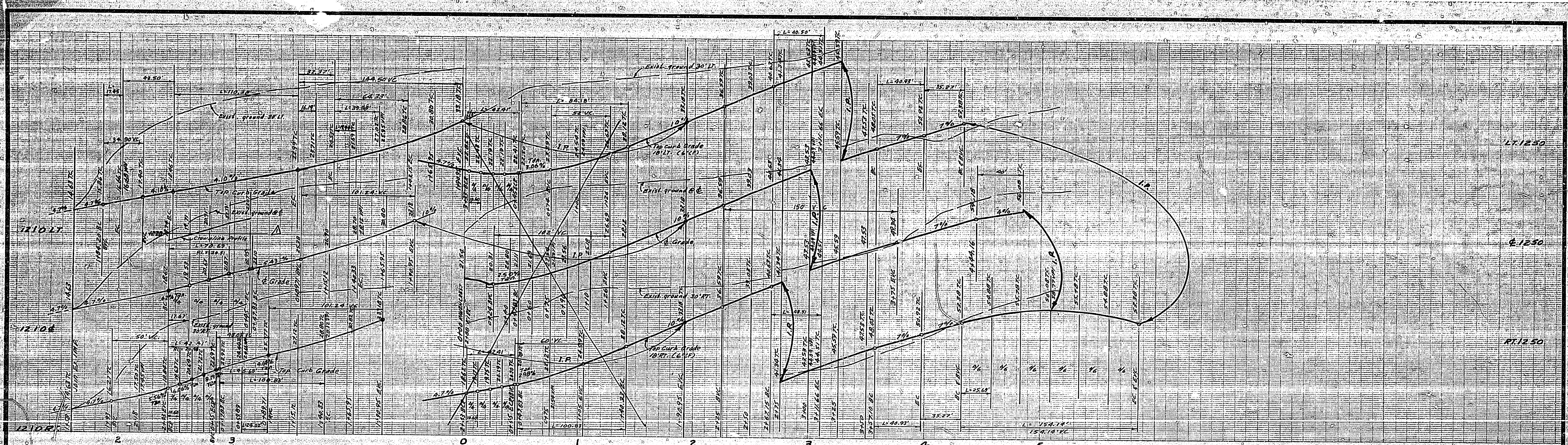


CURVE DATA

NO	R	Δ	T	L
1	27'	90°00'00"	27.00'	42.41'
2	310'	72°32'	34.92'	63.56'
3	282'	72°32'	30.97'	61.69'
4	282'	42°27'	109.52'	208.29'
5	310'	42°27'	123.50'	235.60'
6	210'	74°09'45"	13.64'	27.25'
7	182'	74°09'45"	11.39'	22.75'
8	115'	15°00'00"	15.14'	30.71'
9	36'	210°00'00"	—	181.95'

BENCH MARK: Elev. 1136.542
 CIP. S.W. No. 6-T-C RE. 2011 in curb return S.E.
 corner Chicago and Alessandro.

ALBERT A. WEBB ASSOCIATES CIVIL ENGINEERS RIVERSIDE, CALIFORNIA APPROVED BY: <i>[Signature]</i> DATE: 5/2/17 R.E. No. 9026 W.G. 77-66 FOR A.C. No. 12014	CITY OF RIVERSIDE, CALIFORNIA PUBLIC WORKS DEPARTMENT APPROVED BY: <i>[Signature]</i> PRINCIPAL ENGINEER PUBLIC WORKS DEPARTMENT TRAFFIC DIVISION CHIEF PUBLIC WORKS ENGINEER	*AS BUILT 1-5-82 BOB	INDEXED R.R. ACCOUNT NO.
		STREET PLAN AND PROFILE KIRK STREET TRACT 9419 SCALE: 1" = 40' HORIZ., 1" = 2' VERT.	DRAWING NUMBER R-2029 SHEET 6 OF 7 77-46-A



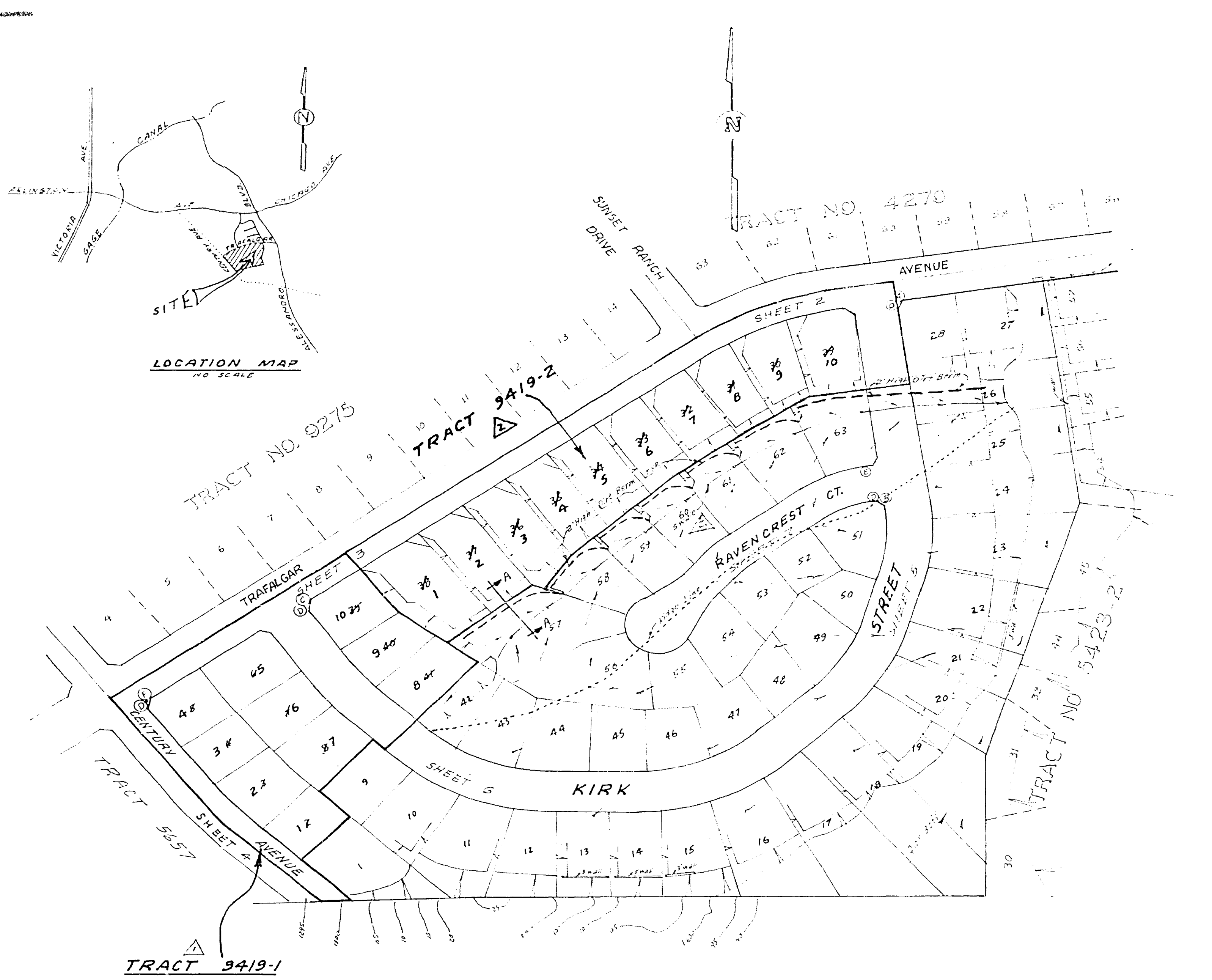
CURVE DATA

No.	R	Δ	T	L
1	27'	90°00'00"	27.00'	42.41'
2	182'	26°30'00"	42.86'	89.18'
3	210'	26°30'00"	51.93'	100.83'
4	210'	12°45'00"	24.36'	48.51'
5	182'	12°45'00"	20.32'	40.50'
6	157'	24°23'00"	30.62'	49.29'
7	40'	270°44'54"	—	124.14'
8	122.12'	30°10'43"	32.93'	64.93'
9	61'	103°40'43"	72.63'	110.30'
10	100'	10°00'00"	8.75'	17.75'

BENCH. MARK: Elev. 1136.542
 CIP B.M. No. G-7-C. 1/2" AS BUILT IN CURB RETURN SE. CORNER Chicago and Massena.

ALBERT A. WEBB ASSOCIATES CIVIL ENGINEERS RIVERSIDE, CALIFORNIA APPROVED BY: <i>[Signature]</i> DATE: 5/4/77 RE. No. 9876 W.D. 77-46 FOR: A.C. No. 14	DESIGNED BY: <i>[Signature]</i> DRAWN BY: <i>[Signature]</i> CHECKED BY: <i>[Signature]</i>	CITY OF RIVERSIDE, CALIFORNIA PUBLIC WORKS DEPARTMENT	STREET PLAN AND PROFILE ACCOUNT No. _____
		APPROVED BY: <i>[Signature]</i> PRINCIPAL ENGINEER TRAFFIC DIVISION CHIEF P.W. ENGINEER	APPROVED BY: <i>[Signature]</i> DIRECTOR OF PUBLIC WORKS

SCALE: 1" = 40' HORIZ., 1" = 2' VERT.
 DATE: 10-1-77

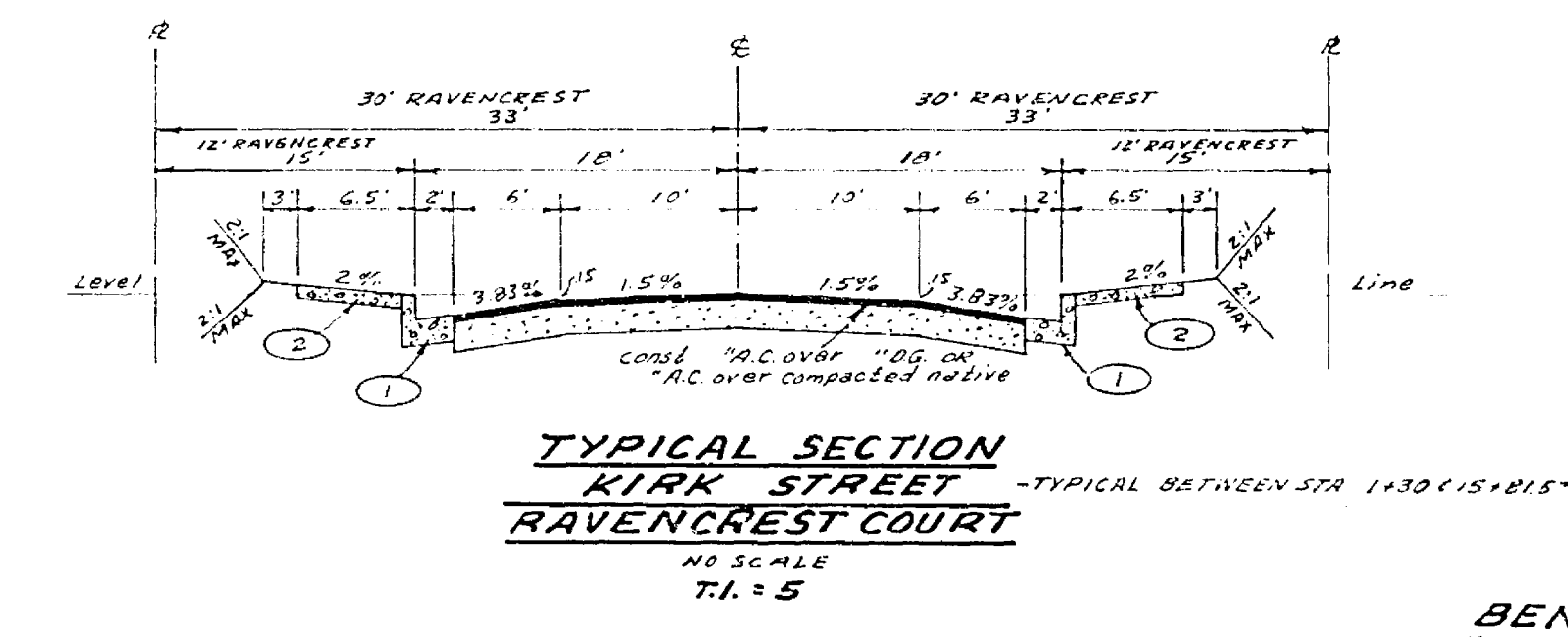
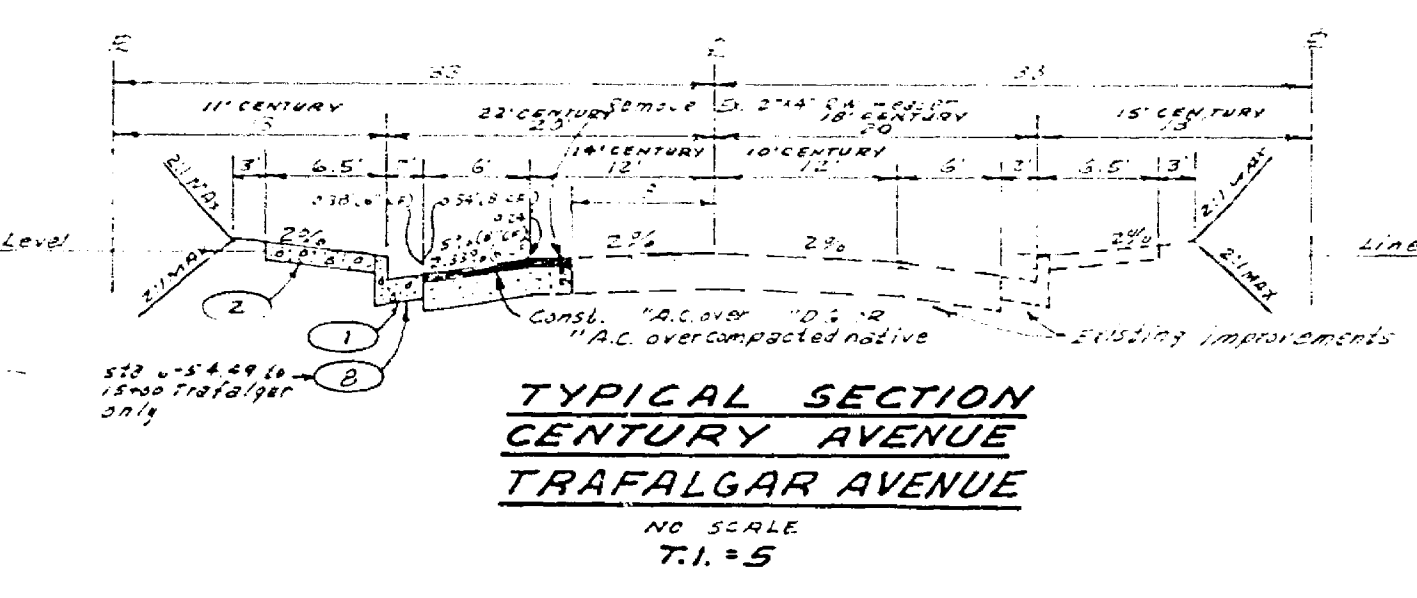
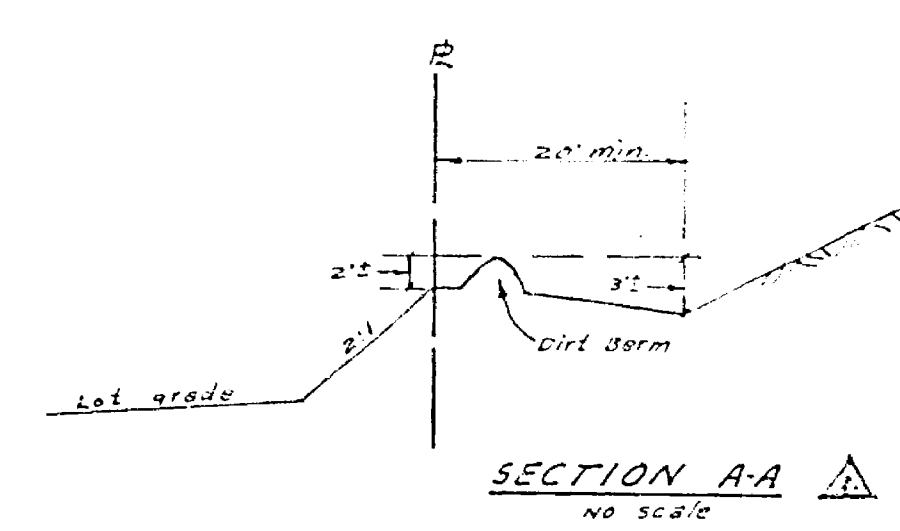


- GENERAL NOTES**
- Construction shall be in accordance with the Standard Specifications for Public Works Construction, 1976 Edition and per City of Riverside Standard Drawings.
 - The 2' wide curb shall be 1/2" above the finished grade. The street shall be prepared to rough grade depth of base material and A.C. paving shall be determined by the City of Riverside design standards and test procedures.
 - All proposed elevations shall be stated in the field by the private Engineer.
 - Location of driveway approaches (etc.) to be determined at the time of construction as approved by the Traffic Engineer.
 - Traffic control signs must be in place prior to opening streets to traffic.
 - Trim existing edges of pavement where new pavement joins to a vertical straight edge. Construct match-up curbs as shown on the plans and paving paving as directed in the P&P to produce a smooth surface. Minimum pavement overlay to be 3" min.
 - It shall be the responsibility of the contractor to clear the right of way in accordance with the provisions of law as it affects easements, utility, irrigation lines and appurtenances and at no cost to the City.
 - curb and gutter to be staked on a 3' offset at 25' intervals.
 - See street lighting plans for quantity and location of required street lights.
 - The contractor shall contact the Public Service Department (787-7229) to pick up any existing 180 barricades that are being removed. The City's Inspector will make the final determination on whether barricades can be relocated.
 - 4"x4" blockouts for mailboxes required in curb sidewalk.

- CONSTRUCTION NOTES**
- construct standard 200 curb & gutter (B.C.K.)
 - construct standard 325 curbline sidewalk
 - construct paving and base per typical section
 - construct standard 200 cross gutter (width as shown on plan)
 - construct standard 3/4" wheel chair ramp
 - construct 2"x4" Redwood Header
 - construct standard 180 Barricade
 - construct standard 200 curb & gutter (B.C.K.)
 - construct 6" wide 2" A.C. swale

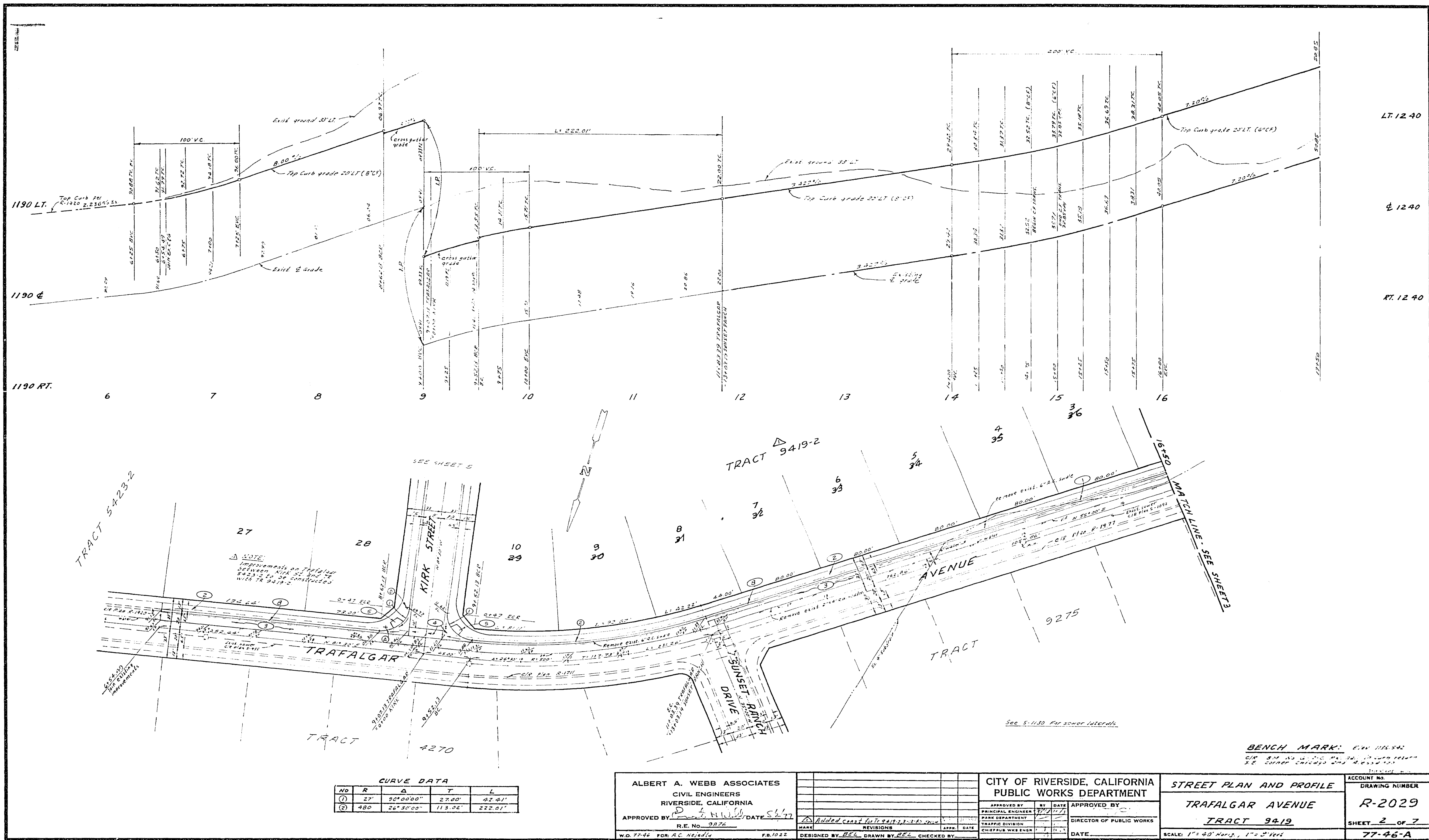
STREET NAME AND TRAFFIC SIGN SCHEDULE		
(A)	TRAFALGAR AVE	2100
(A)	KIRK ST	6100
(B)	KIRK ST	6100
(B)	RAVENCREST CT	2200
(C)	TRAFALGAR AVE	2200
(C)	KIRK ST	6100
(D)	STOP SIGN, R1 30" OCTAGON	
(E)	W53 (NOT A THROUGH STREET) 24"x24"	
(F)	CENTURY AVE	6100
(F)	TRAFALGAR AVE	2200

NOTE:
The private engineer signing these plans is responsible for the accuracy and acceptability of the work herein. In the event of discrepancies arising during construction, the private engineer shall be responsible for determining an acceptable solution and revising the plans for approval by the City.



BENCH MARK:
C&G B.M. 11 7-7-77 24' x 24' CONCRETE
Corner Shiloh & N. 25th St.

ALBERT A. WEBB ASSOCIATES CIVIL ENGINEERS RIVERSIDE, CALIFORNIA APPROVED BY: <i>[Signature]</i> DATE: 3/2/77 R.E. No. 9826 W-77-46 FOR A.C. No. 10/11 P. 1022	DESIGNED BY: BEL DRAWN BY: BEL CHECKED BY:	CITY OF RIVERSIDE, CALIFORNIA PUBLIC WORKS DEPARTMENT	STREET PLAN & PROFILE INDEX TRACT 9419	ACCOUNT NO. R-2029 SHEET 1 OF 7 77-46-A
		APPROVED BY: <i>[Signature]</i> DATE: 3/2/77 CHIEF ENGINEER	APPROVED BY: <i>[Signature]</i> DATE: 3/2/77 DIRECTOR OF PUBLIC WORKS	SCALE: 1" = 100'



CURVE DATA

NO	R	Δ	T	L
①	27'	90°00'00"	27.00'	27.41'
②	480'	26°30'00"	113.86'	222.81'

ALBERT A. WEBB ASSOCIATES
 CIVIL ENGINEERS
 RIVERSIDE, CALIFORNIA
 APPROVED BY: *[Signature]* DATE: 5/17/77
 R.E. No. 9076
 W.D. 77-46 FOR: A.C. 7/20/74 F.B. 1022

MARK	REVISIONS	APPR.	DATE
	Added curb for 24' x 24' x 24' x 24'		

DESIGNED BY: *[Signature]* DRAWN BY: *[Signature]* CHECKED BY: *[Signature]*

CITY OF RIVERSIDE, CALIFORNIA
 PUBLIC WORKS DEPARTMENT
 APPROVED BY: *[Signature]* BY DATE: 5/17/77
 PRINCIPAL ENGINEER
 TRAFFIC DIVISION
 CHIEF: W. W. ENSH
 DATE: _____

STREET PLAN AND PROFILE
 TRAFALGAR AVENUE
 TRACT 9419
 SCALE: 1" = 40' Horiz., 1" = 5' Vert.

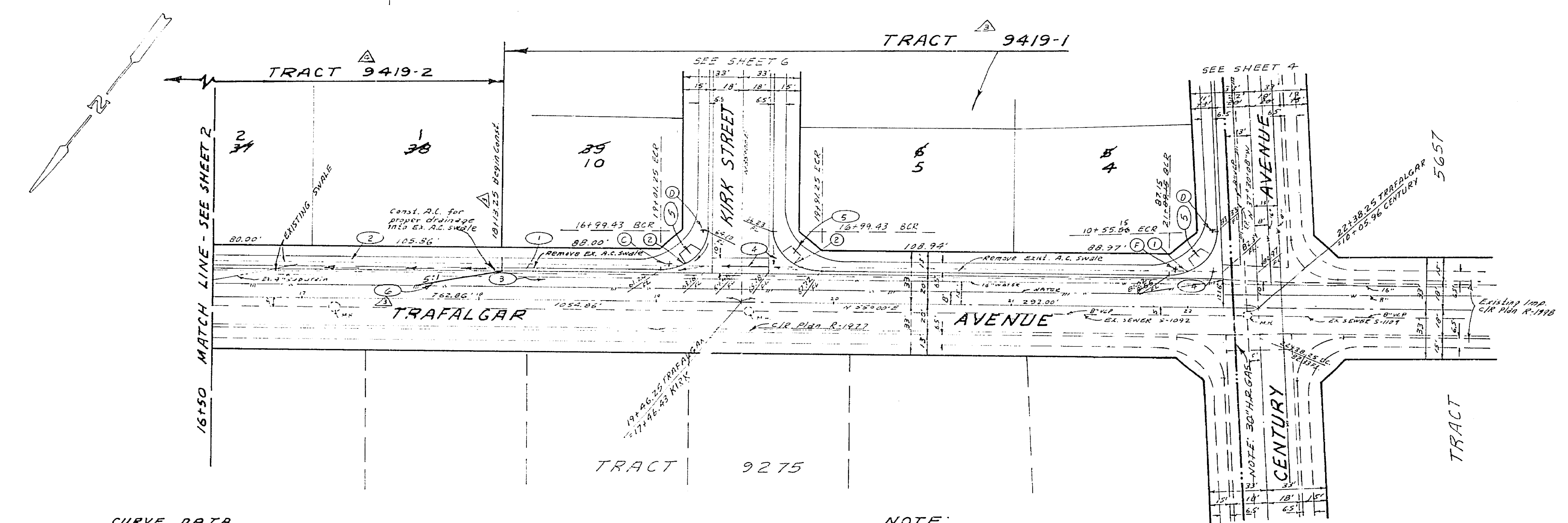
ACCOUNT NO.
 DRAWING NUMBER
R-2029
 SHEET 2 OF 7
 77-46-A

BENCH MARK: E.V. 1165.54
 CIP 8' x 8' x 4' on 12" dia. pipe, 10' from center of right of way

LT. 1290
 & 1290
 RT. 1290

1250 LT.
 1250 &
 1250 RT.

16 17 18 19 20 21 22



CURVE DATA

NO	R	Δ	T	L
①	27'	92°52'08"	20.21'	43.53'
②	27'	90°	27.00'	42.44'

NOTE:
 Prior to starting work in
 310' of 30" N.P. Gas line
 Utility Department
 Gas Co. Department Station,
 Tel. No. 718-645-2617.

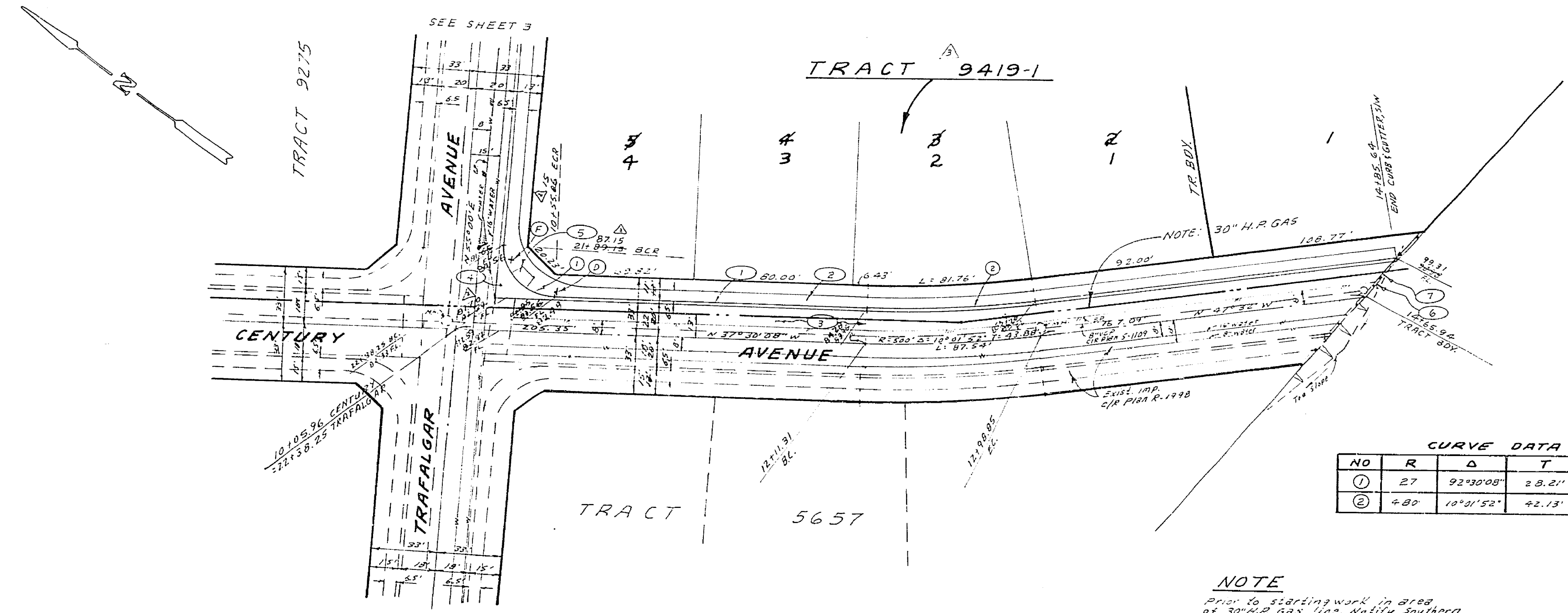
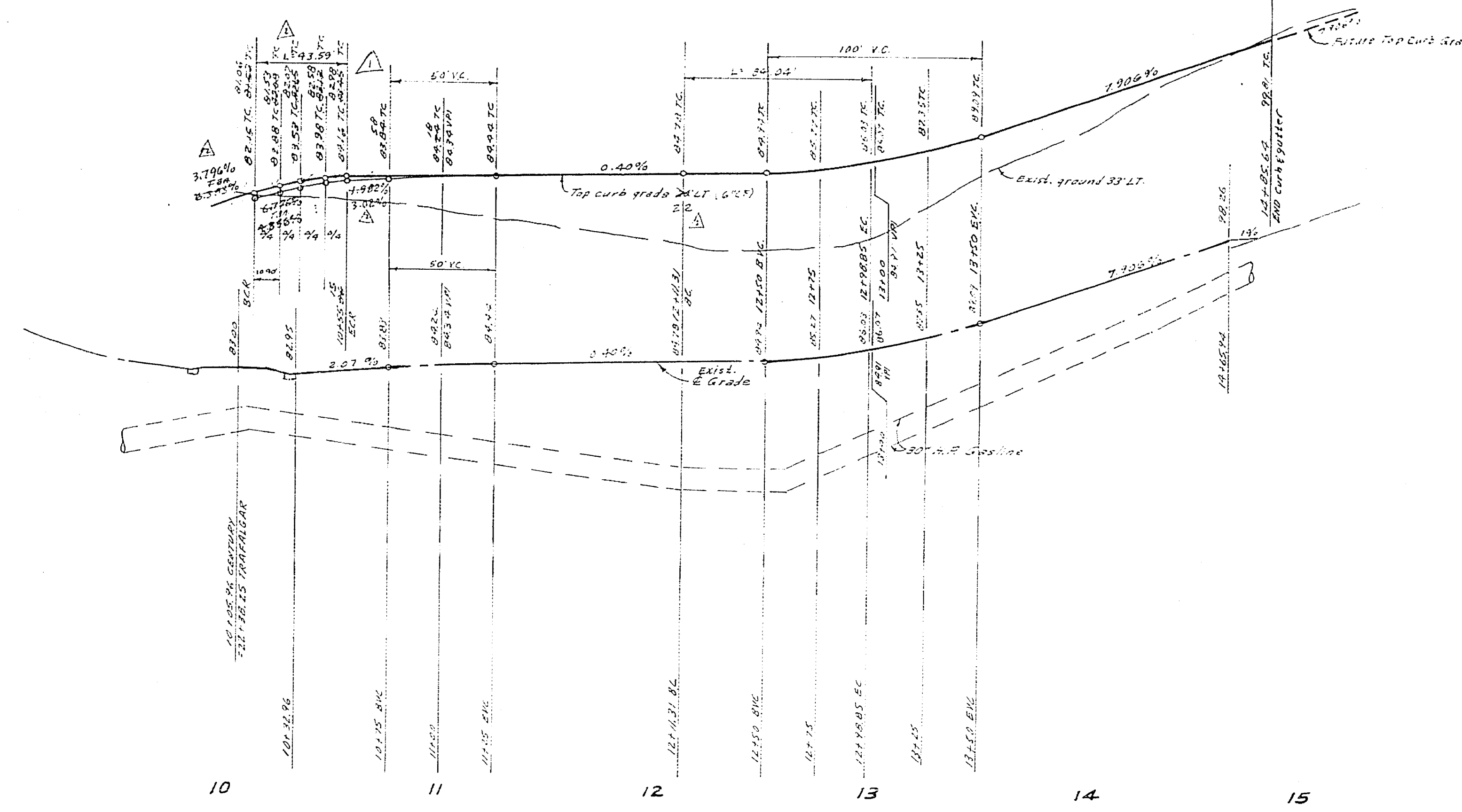
See 2-11-30 P.W. Sewer Records

BENCH MARK: 1136.542
 C&G 310' N.P. Gas line
 S.E. corner Chicago and Mass streets

ALBERT A. WEBB ASSOCIATES CIVIL ENGINEERS RIVERSIDE, CALIFORNIA APPROVED BY: <i>[Signature]</i> DATE 5/6/77 R.E. No. 9876		CITY OF RIVERSIDE, CALIFORNIA PUBLIC WORKS DEPARTMENT APPROVED BY: <i>[Signature]</i> DATE 5/7/77 TRAFFIC DIVISION CHIEF P.W. ENGR.		ACCOUNT No. DRAWING NUMBER R-2029 SHEET 3 OF 7 77-46-A
W.O. 77-46 FOR: A.C. No. 114 F.B. 1022		DESIGNED BY: BEL DRAWN BY: BEL CHECKED BY:		STREET PLAN AND PROFILE TRAFALGAR AVENUE TRACT 9419 SCALE: 1" = 40' Horiz., 1" = 3' Vert.

1300 LT.
1280 LT.
1280 &
1280 RT.

LT. 1300
± 1300
RT. 1500



CURVE DATA

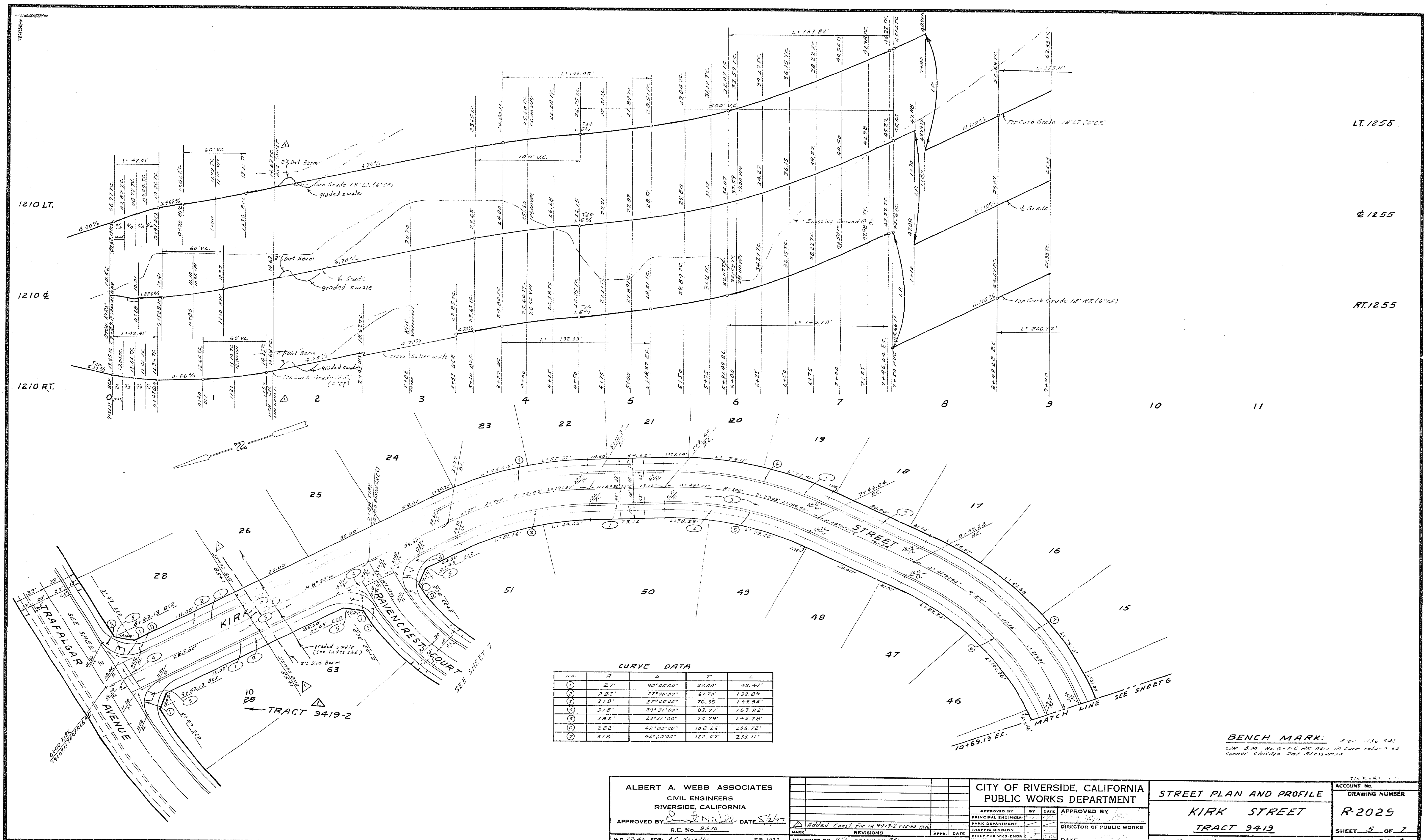
NO	R	Δ	T	L
①	27	92°30'00"	28.21'	43.59'
②	480	10°01'52"	42.13'	84.04'

NOTE
Prior to starting work in area of 30" H.R. Gas line, notify Southern California Gas Co. Department station. Tele. No. 712-825-2412.

See S-1130 For sewer laterals.

BENCH MARK: Elev. 116.542
C.R. B.M. No. G-7-C RE. 1911. 12 S.W. 1/4 Sec. 12 T. 12 N. R. 12 E. corner Chicago and Alessandro.

APPROVED BY <i>K. V. ...</i> SOUTHERN CALIF. GAS CO.		DATE 7-15-77	APPROVED BY <i>Albert A. Webb</i> R.E. No. 9876	DATE 5/2/77	W.O. 77-46 FOR: A.C. No. 114 F.B. 1022	DESIGNED BY: BEL DRAWN BY: BEL CHECKED BY:	ALBERT A. WEBB ASSOCIATES CIVIL ENGINEERS RIVERSIDE, CALIFORNIA	CITY OF RIVERSIDE, CALIFORNIA PUBLIC WORKS DEPARTMENT	STREET PLAN AND PROFILE CENTURY AVENUE TRACT 9419	ACCOUNT No. DRAWING NUMBER R-2029 SHEET 4 OF 7 77-46-A
--	--	-----------------	---	----------------	---	--	--	---	--	---



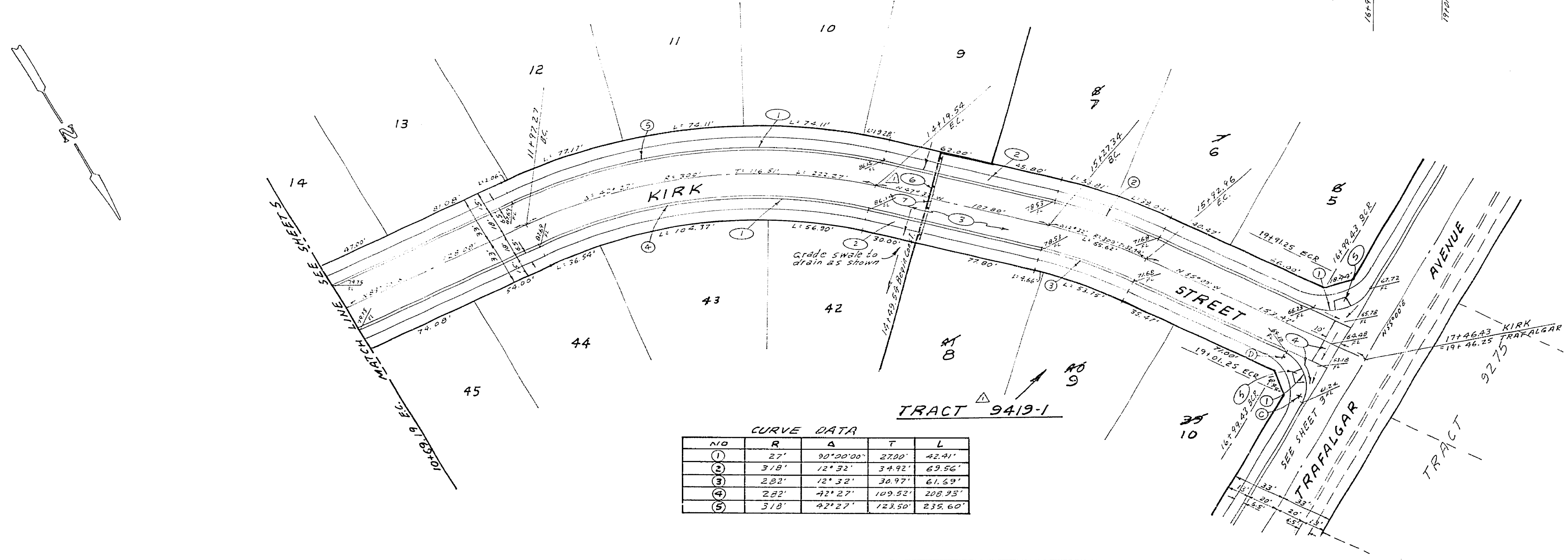
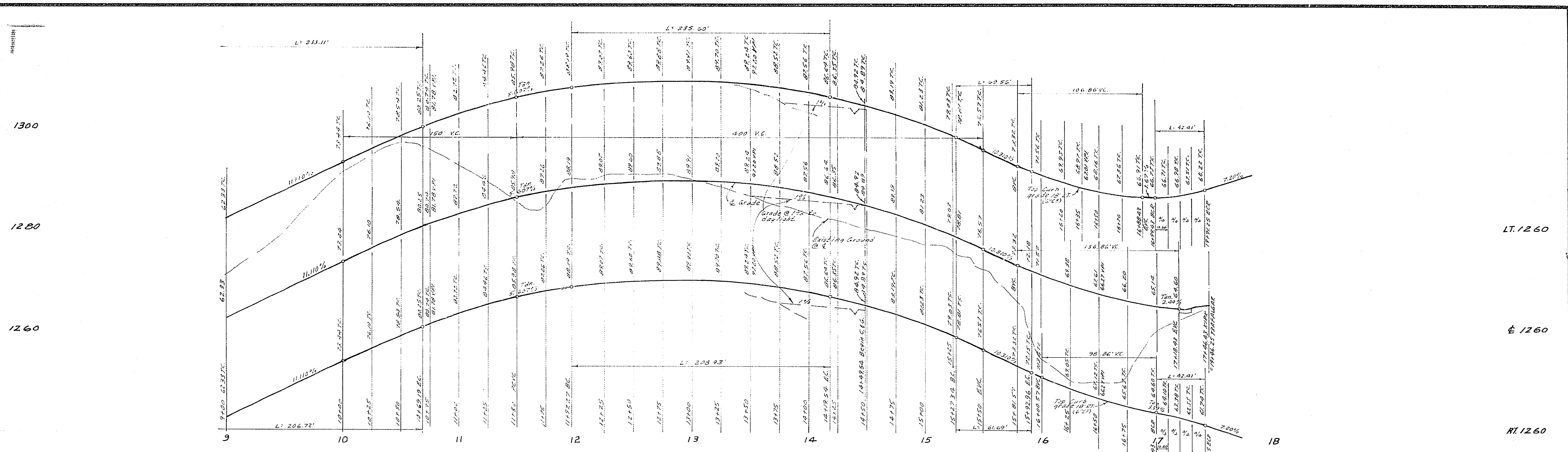
LT. 1255
 Q. 1255
 RT. 1255

CURVE DATA

NO.	R	Δ	T	L
1	27'	90°00'00"	27.00'	42.41'
2	282'	27°00'00"	67.70'	132.89'
3	318'	27°00'00"	76.35'	142.85'
4	318'	33°31'00"	93.77'	163.82'
5	282'	33°31'00"	74.29'	142.28'
6	282'	42°00'00"	108.25'	206.72'
7	318'	42°00'00"	122.07'	233.11'

BENCH MARK: ELEV. 116.942
 CUR. B.M. No. G-7-C AT CORN. OF CURB 18' RT. 18' RT. 18' RT. 18' RT.
 CORNER CHICAGO AND RIVERSIDE

ALBERT A. WEBB ASSOCIATES CIVIL ENGINEERS RIVERSIDE, CALIFORNIA		CITY OF RIVERSIDE, CALIFORNIA PUBLIC WORKS DEPARTMENT		STREET PLAN AND PROFILE	ACCOUNT NO. DRAWING NUMBER
APPROVED BY: <i>[Signature]</i> DATE: 5/2/77 R.E. No. 9076		APPROVED BY: <i>[Signature]</i> DIRECTOR OF PUBLIC WORKS		KIRK STREET TRACT 9419	
W.O. 77-46 FOR: A.C. Nayady		DESIGNED BY: <i>[Signature]</i> DRAWN BY: <i>[Signature]</i> CHECKED BY:		SCALE: 1" = 40' PLAN, 1" = 8' PROFILE	
		REVISIONS Δ Added Const for 72,9419-2 11/20/00		SHEET 5 OF 7 77-46-A	

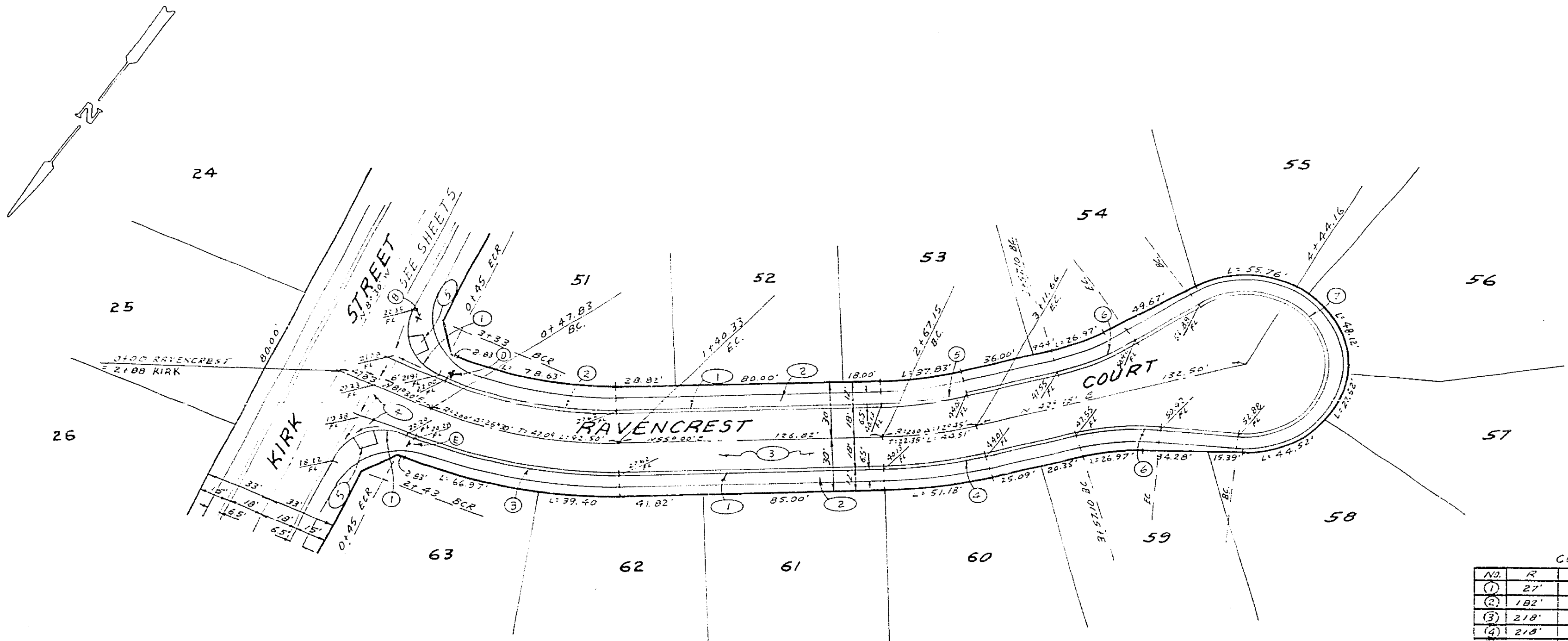
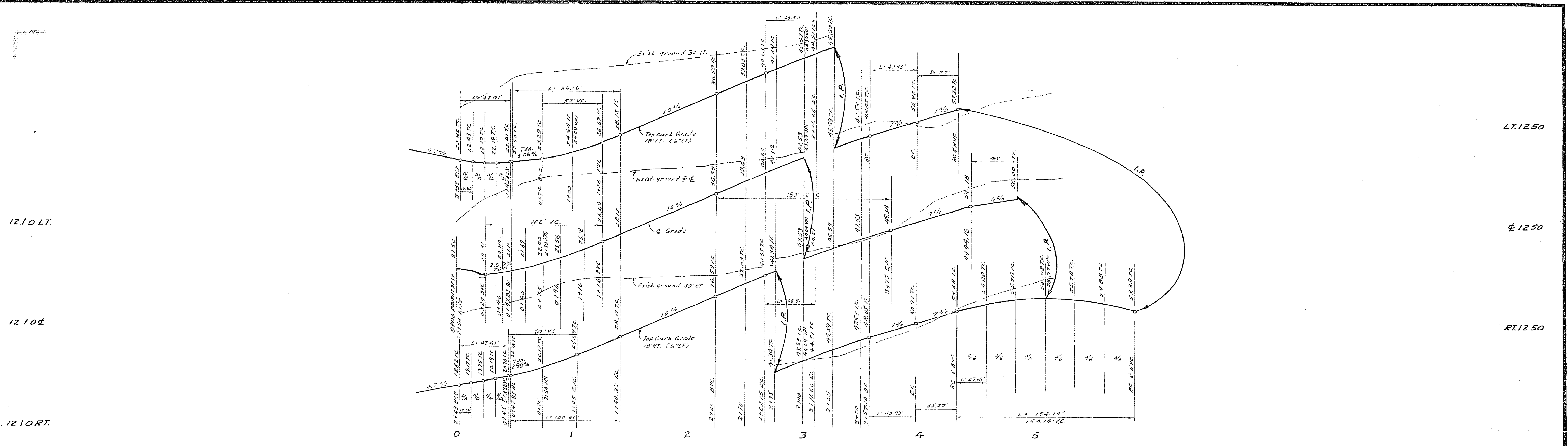


CURVE DATA

NO	R	Δ	T	L
(1)	27'	30°20'00"	27.00'	42.41'
(2)	318'	12°32'	34.92'	69.56'
(3)	282'	12°32'	36.97'	61.54'
(4)	282'	42°27'	109.52'	208.95'
(5)	318'	42°27'	123.50'	235.60'

BENCH MARK: Elev 1136.542
 C.R. B.M. No. G-7-C PE BULL. in curb return SE
 corner Chicago and Alessandro

ALBERT A. WEBB ASSOCIATES CIVIL ENGINEERS RIVERSIDE, CALIFORNIA APPROVED BY: <i>[Signature]</i> DATE: 5/2/77 R.E. No. 2876	CITY OF RIVERSIDE, CALIFORNIA PUBLIC WORKS DEPARTMENT		STREET PLAN AND PROFILE	ACCOUNT No. R-2029
	APPROVED BY: <i>[Signature]</i> PRINCIPAL ENGINEER PARK DEPARTMENT TRAFFIC DIVISION CHIEF P.W.K.S. ENGR.	BY: <i>[Signature]</i> DATE: <i>[Date]</i> DIRECTOR OF PUBLIC WORKS	KIRK STREET TRACT 9419	SHEET 6 OF 7 SCALE: 1" = 40' HORIZ., 1" = 10' VERT.



CURVE DATA

NO	R	Δ	T	L
①	27'	30°30'00"	27.00'	42.41'
②	182'	26°30'00"	22.86'	82.18'
③	218'	26°30'00"	21.92'	100.03'
④	218'	12°45'00"	24.36'	48.51'
⑤	182'	12°45'00"	20.33'	40.50'
⑥	115'	20°23'22"	20.38'	48.93'
⑦	45'	220°46'50"	---	154.14'

BENCH MARK: Elev 1136.542
 C/A B.M. No. G-7-C R.R. rail in curb return S.E. corner Chicago and Alessandro.

ALBERT A. WEBB ASSOCIATES CIVIL ENGINEERS RIVERSIDE, CALIFORNIA APPROVED BY: <i>[Signature]</i> DATE: 5/2/77 R.E. No. 2076	CITY OF RIVERSIDE, CALIFORNIA PUBLIC WORKS DEPARTMENT		STREET PLAN AND PROFILE ACCOUNT NO.	
	APPROVED BY: <i>[Signature]</i> DATE: 5/2/77 PRINCIPAL ENGINEER PARK DEPARTMENT TRAFFIC DIVISION CHIEF PUB. WKS. ENGR.		APPROVED BY: <i>[Signature]</i> DATE: 5/2/77 DIRECTOR OF PUBLIC WORKS	
DESIGNED BY: <i>[Signature]</i> DRAWN BY: <i>[Signature]</i> CHECKED BY:		RAVENCREST COURT TRACT 9419		DRAWING NUMBER R-2029
W.O. 77-46 FOR: A.C. No. 10414 F.B. 1022		SCALE: 1" = 40' Horiz., 1" = 5' Vert.		SHEET 7 OF 7 77-46-A