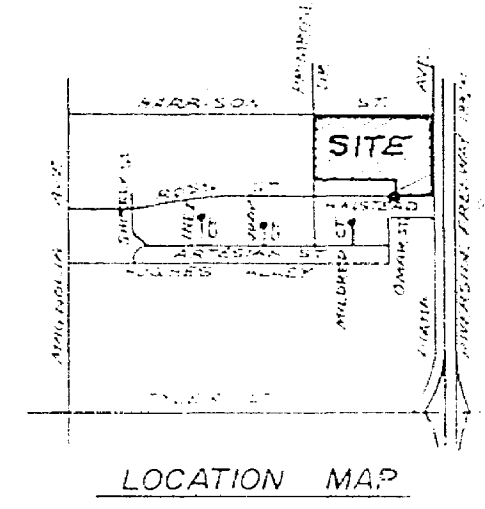
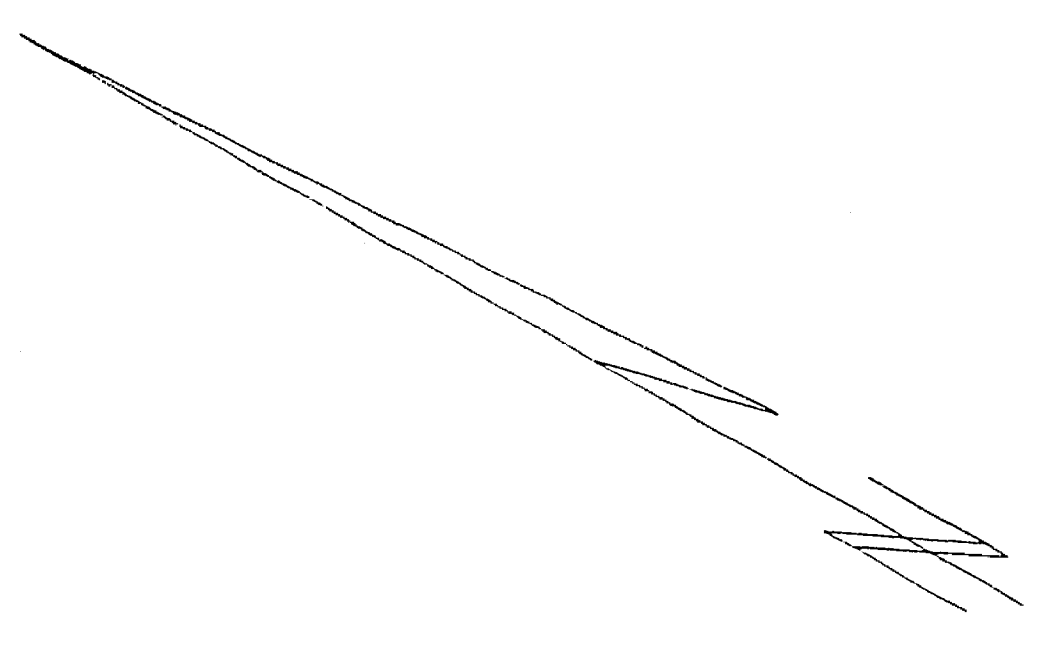


INDEX MAP  
NO SCALE



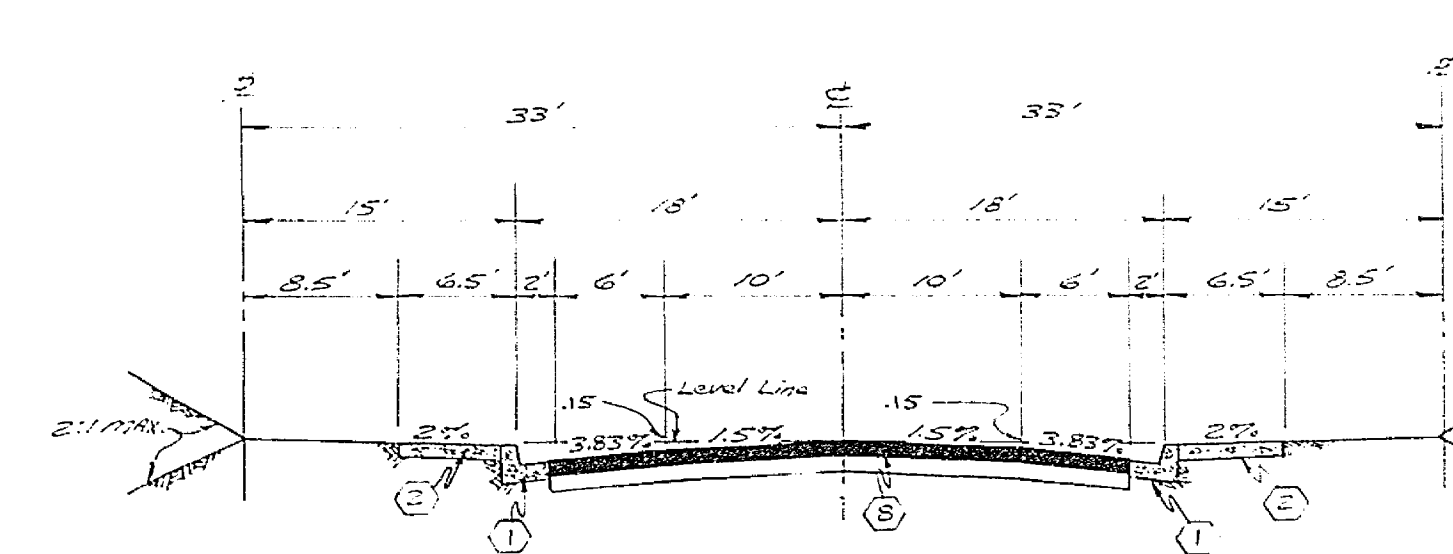
CONSTRUCTION NOTES

- 1. CONST. P.C.C. CURB & GUTTER PER RIVERSIDE CITY STD. #200 (6" C.F.)
- 2. CONST. 6" P.C.C. CURB LINE SIDEWALK PER RIVERSIDE CITY STD. #205
- 3. CONST. 2" ASPHALT LINE SIDEWALK PER RIVERSIDE CITY STD. #205
- 4. CONST. P.C.C. CURB GUTTER PER RIVERSIDE CITY STD. #220 (WIDTH SHOWN ON PLANS)
- 5. PLACE 2" x 4" SPROUD HEAPER
- 6. CONST. BARRICADE PER RIVERSIDE CITY STD. #180
- 7. CONST. WHEELCHAIR RAMP PER RIVERSIDE CITY STD. #204
- 8. CONST. 2" ASPHALT DRIVEWAY APPROACH PER RIVERSIDE CITY STD. #205
- 9. CONST. 2" ASPHALT DRIVEWAY APPROACH PER RIVERSIDE CITY STD. #205
- 10. CONST. STD. 24" DIA. MANHOLE PER RIVERSIDE CITY STD. #180

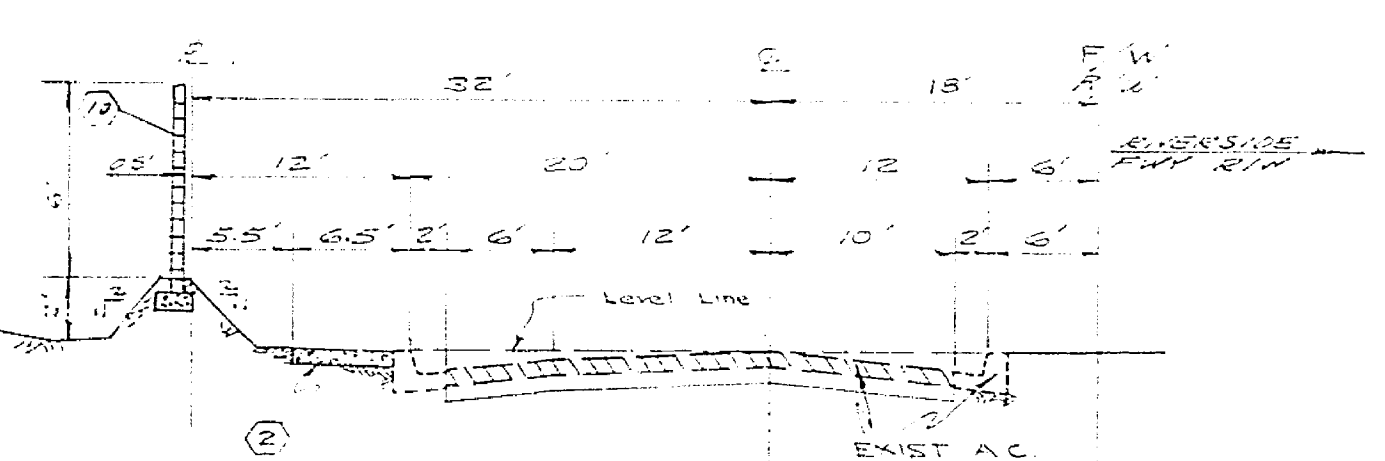
GENERAL NOTES

- 1. THE PRIVATE ENGINEER SIGNING THESE PLANS IS RESPONSIBLE FOR THE ACCURACY AND ACCEPTABILITY OF THE WORK HEREON. IN THE EVENT OF DISCREPANCIES ARISING THEREIN, THE PRIVATE ENGINEER SHALL BE RESPONSIBLE FOR DETERMINING AN ACCEPTABLE SOLUTION AND REVISIONS TO THE PLANS FOR APPROVAL BY THE CITY.
- 2. IT SHALL BE THE RESPONSIBILITY OF THE CONTRACTOR TO CLEAR THE RIGHT OF WAY IN ACCORDANCE WITH THE PROVISIONS OF THE LAW AS IT AFFECTS EACH UTILITY INCLUDING IRRIGATION LINES AND APPURTENANCES AND AT NO COST TO THE CITY.
- 3. CONSTRUCTION SHALL BE IN ACCORDANCE WITH THE CITY OF RIVERSIDE, DEPARTMENT OF PUBLIC WORKS, STANDARD DRAWINGS, AND THE STANDARD SPECIFICATIONS FOR PUBLIC WORKS CONSTRUCTION, 1976 EDITION.
- 4. TERMINAL OF EXISTING PAVEMENT WHERE NEW PAVEMENT JOINS TO A SMOOTH STRAIGHT LINE, CONSTRUCT MATCH-UP PAVING AS SHOWN ON PLAN AND OVERLAY PAVING AS DIRECTED IN THE FIELD TO PRODUCE A SMOOTH SECTION. ENGINEER ESTIMATES OVERLAY TO BE 55 TONS.
- 5. CURB AND GUTTER SHALL BE STAKED WITH 3" OFFSETS AT 25' INTERVALS.
- 6. CONSTRUCT DRIVEWAY APPROACHES PER STD. DWG. 302. EXACT SIZE AND LOCATION TO BE DETERMINED AT THE TIME OF CONSTRUCTION AS APPROVED BY THE TRAFFIC ENGINEER.
- 7. ALL TRAFFIC SIGNS SHALL BE INSTALLED PRIOR TO OPENING THE STREETS TO TRAFFIC.
- 8. ALL TREE STUMPS IN PUBLIC RIGHT OF WAY SHALL BE REMOVED AS REQUIRED BY THE PUBLIC WORKS DEPT.
- 9. ALL FLAGGED ELEVATIONS SHALL BE STAKED IN THE FIELD BY THE PRIVATE ENGINEER.
- 10. SEE "STREET LIGHTING PLANS" FOR THE QUANTITY AND LOCATION OF REQUIRED STREET LIGHT.
- 11. 2" x 4" BLOCKS REQUIRED FOR MAILBOXES REQUIRED IN CURB S/W.
- 12. SEE LANDSCAPING & SPRINKLER SYSTEM PLANS FOR PARKWAY ON DIANA.
- 13. ALL REMAINING TREE LIMBS THAT ARE LESS THAN 15' ABOVE THE STREET SURFACE SHALL BE TRIMMED BACK.
- 14. REMOVE EXIST. TREES ON THE SWLY SIDE OF HARRISON STREET AT THE INTERSECTION WITH BARCLAY & DIANA AVENUE PER THE MANHOLE AND BE TRIMMED AS DIRECTED BY PARK DEPARTMENT DEPT.

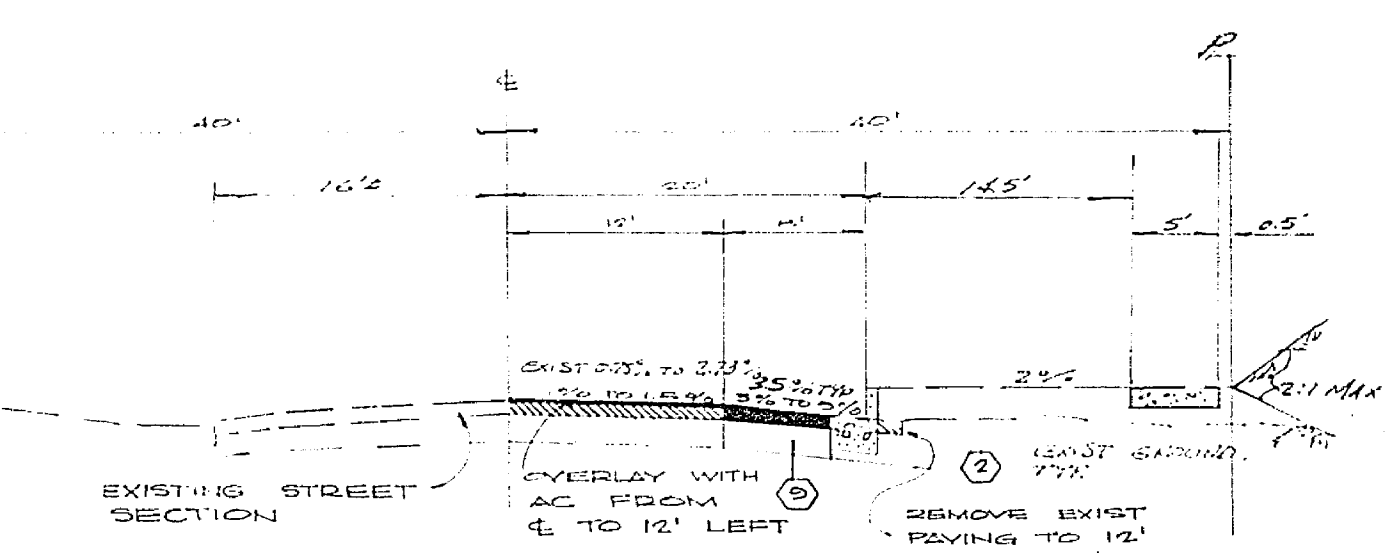
TRAFFIC SIGN	TRAFFIC SIGN SCHEDULE
(A)	HARRISON ST 3500
(B)	BARCLAY ST 9900
(C)	ALBANY ST 3500
(D)	BARCLAY ST 2900
(E)	ALBANY ST 3600
(F)	DIANA AVE 9900
(G)	R1 (STOP SIGN) 30" OCTAGON
(H)	RELOCATE EXIST. STOP SIGN



TYPICAL SECTION  
BARCLAY STREET  
NO SCALE  
T.I. 5



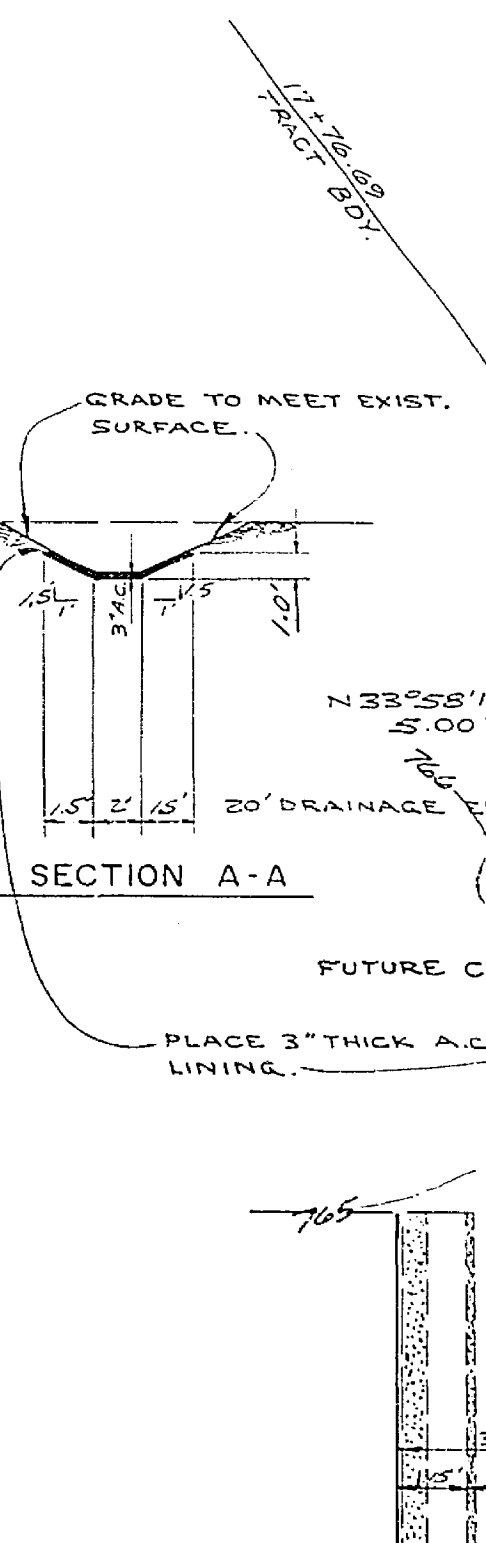
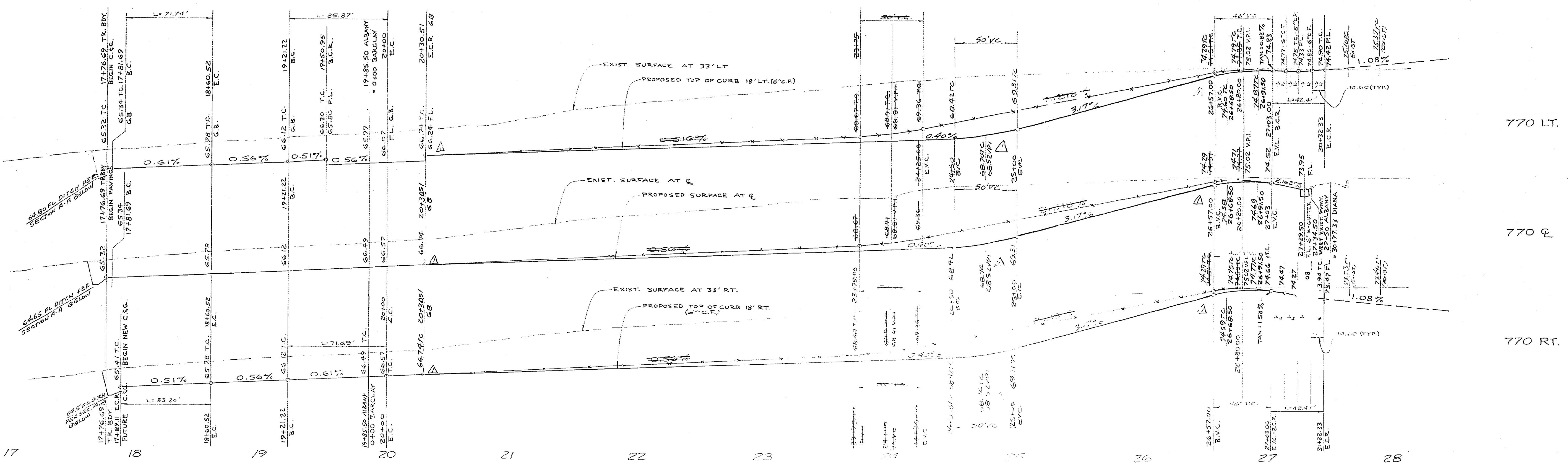
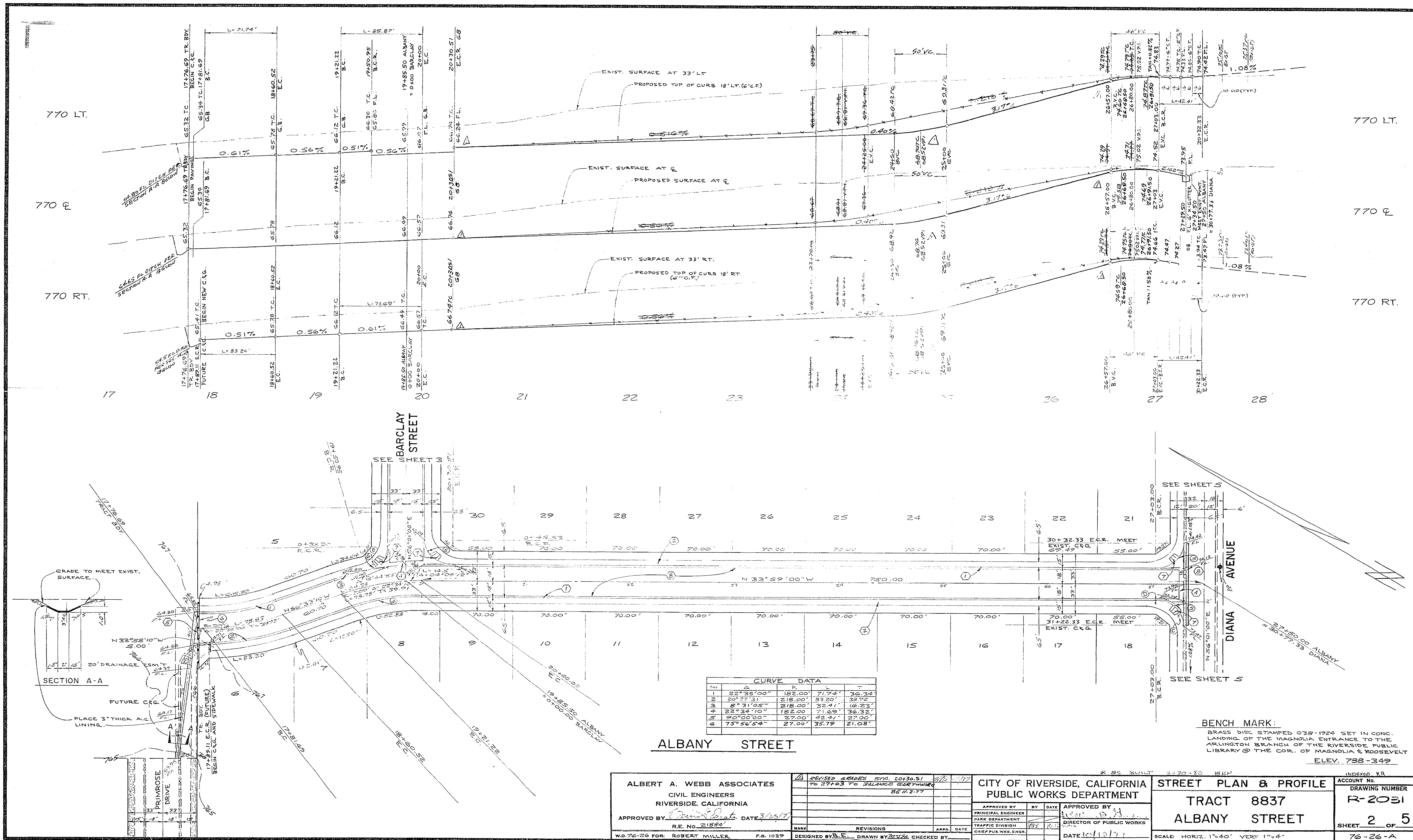
TYPICAL SECTION  
DIANA STREET  
EASTERLY FROM LOT 20 DRIVEWAY TO STA. 34+15.32  
NO SCALE  
T.I. 6



TYPICAL SECTION  
HARRISON STREET  
NO SCALE  
T.I. 6

BENCH MARK  
BRASS DISC STAMPED 028-1924 SET IN CONC. LANDING OF THE MAGNOLIA ENTRANCE TO THE ARLINGTON BRANCH OF THE RIVERSIDE PUBLIC LIBRARY @ THE COR. OF MAGNOLIA & ROOSEVELT.  
ELEV 788-349

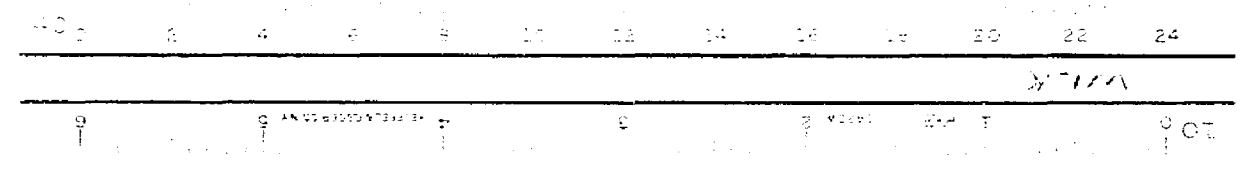
PLANNING DEPARTMENT APPROVED BY: <i>[Signature]</i> DATE: 5-25-77	ALBERT A. WEBB ASSOCIATES CIVIL ENGINEERS RIVERSIDE, CALIFORNIA APPROVED BY: <i>[Signature]</i> DATE: 5-25-77 R.E. No. 21882	CITY OF RIVERSIDE, CALIFORNIA DEPARTMENT OF PUBLIC WORKS APPROVED BY: <i>[Signature]</i> DATE: 5-25-77 PARK DEPARTMENT TRAFFIC DIVISION ASSISTANT CITY ENG.	STREET PLAN & PROFILE TRACT NO. 8837 INDEX SHEET SCALE: AS SHOWN	INDEXED RB PROJECT NO. R-2031 SHEET 1 OF 5 FILE NO. 76-26-A
	DESIGNED BY: <i>[Signature]</i> DRAWN BY: <i>[Signature]</i> CHECKED BY: <i>[Signature]</i>	W.O. 76-26 FOR RIVERSIDE CALIF. 7.8.1039	DATE: 5/25/77	DATE: 5/25/77

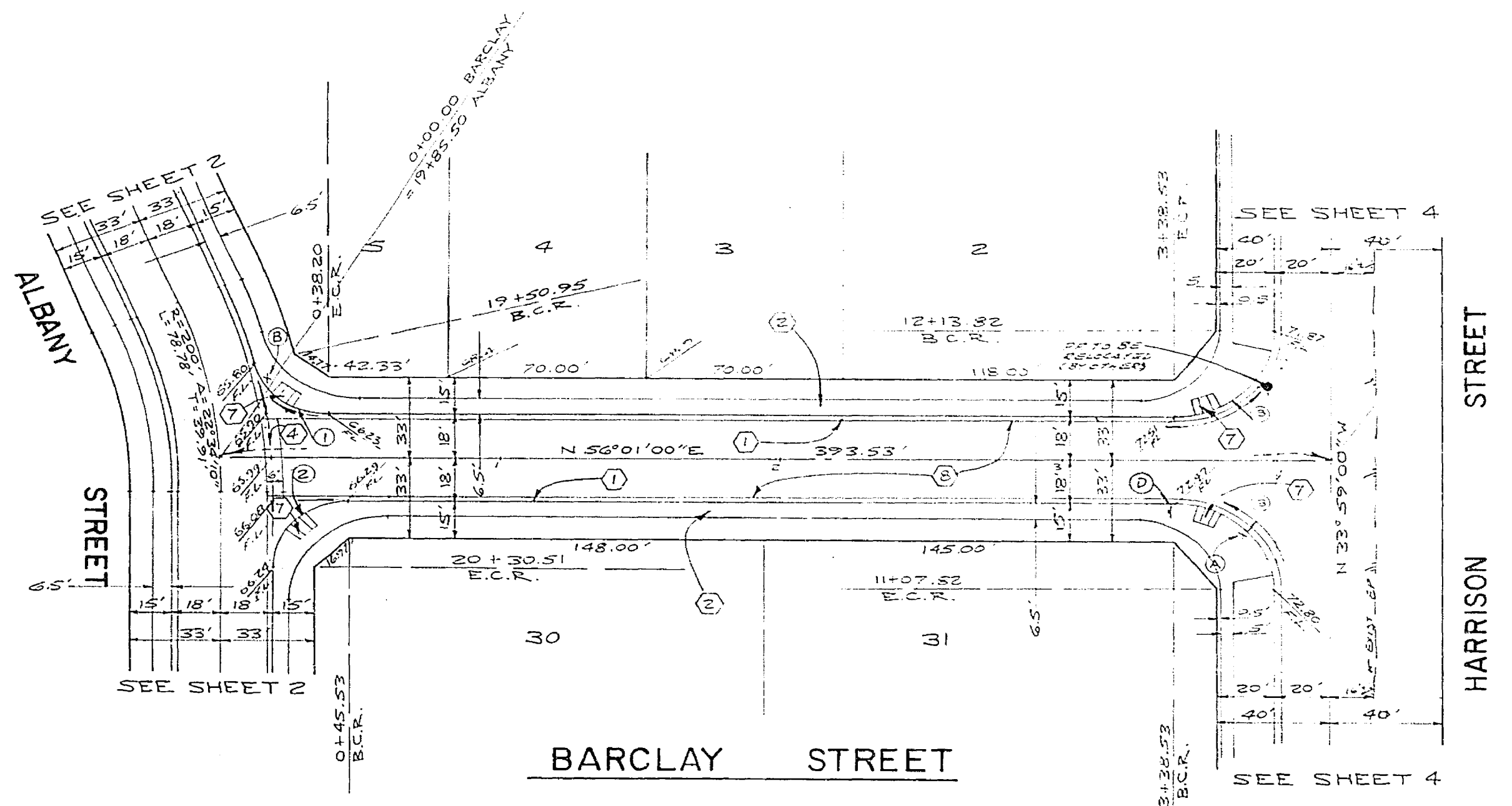
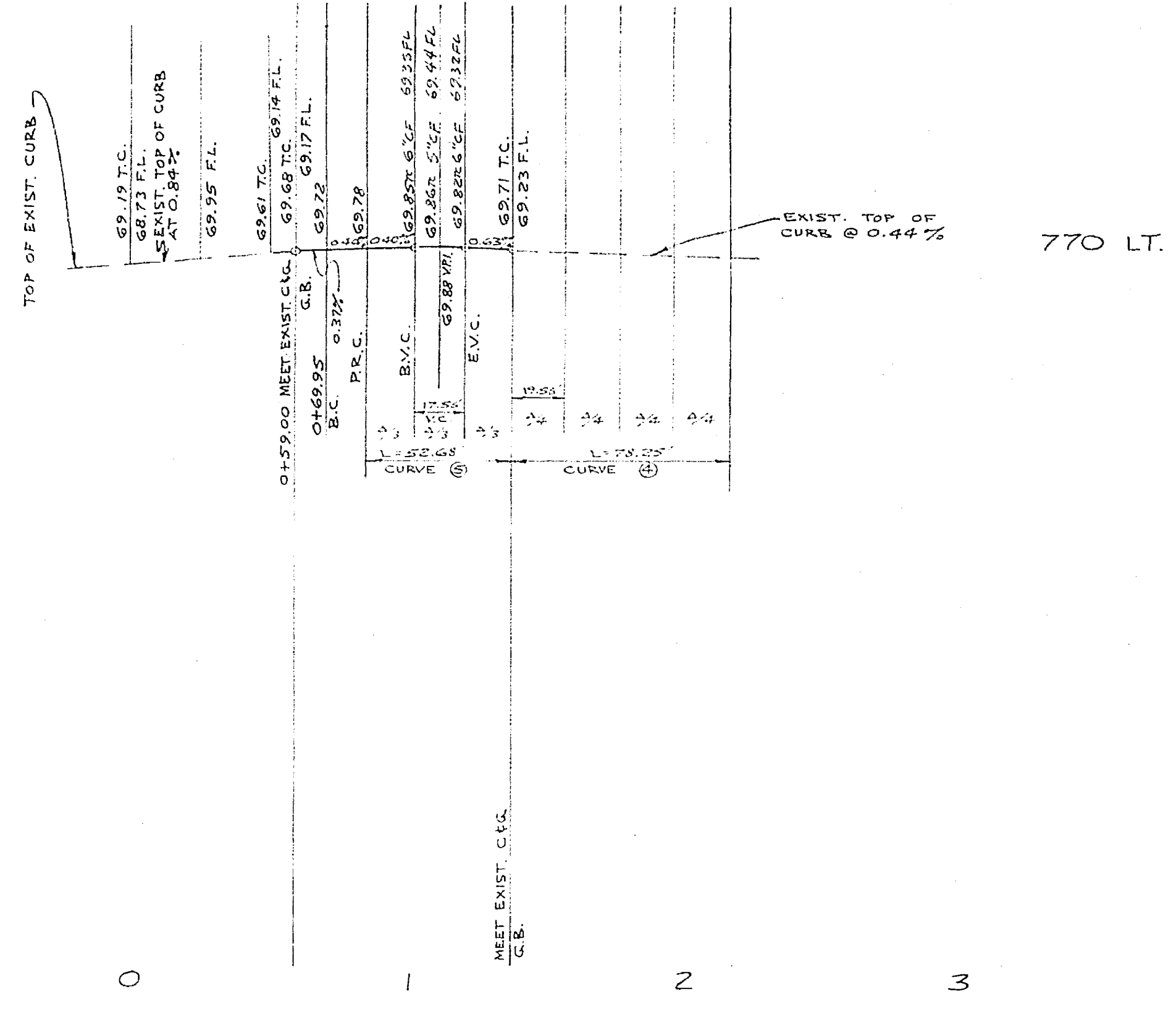
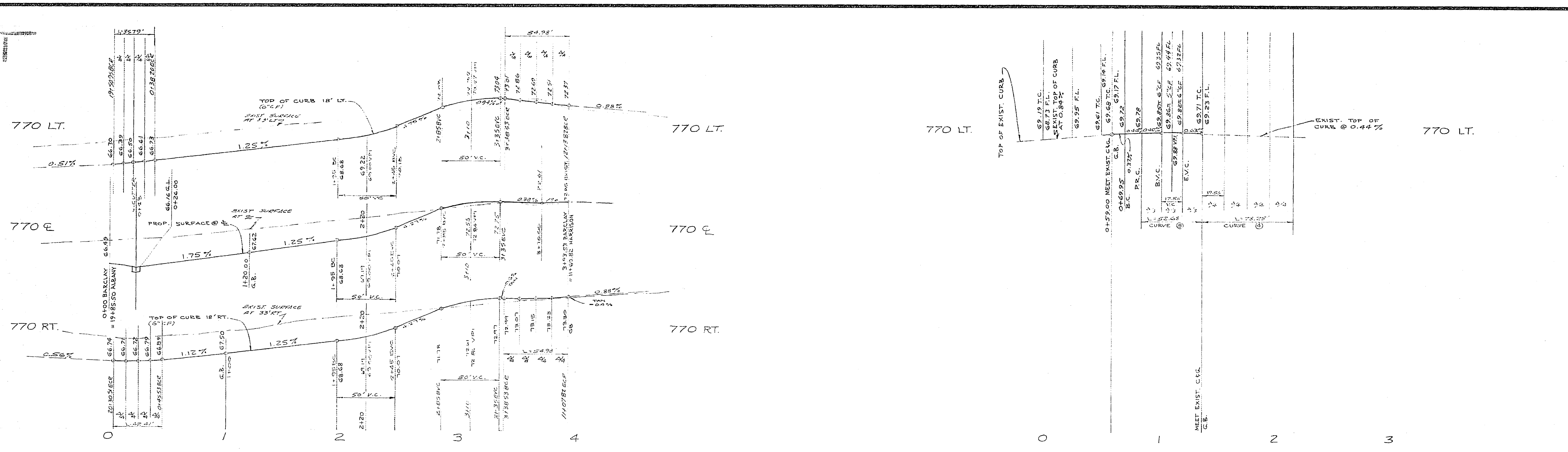


No.	Δ	R	L	T
1	22°35'00"	182.00'	71.74'	36.34'
2	20°27'31"	218.00'	83.20'	33.92'
3	8°31'05"	218.00'	32.41'	16.23'
4	22°34'10"	182.00'	71.69'	36.32'
5	90°00'00"	27.00'	42.41'	27.00'
6	73°56'54"	27.00'	35.79'	21.08'

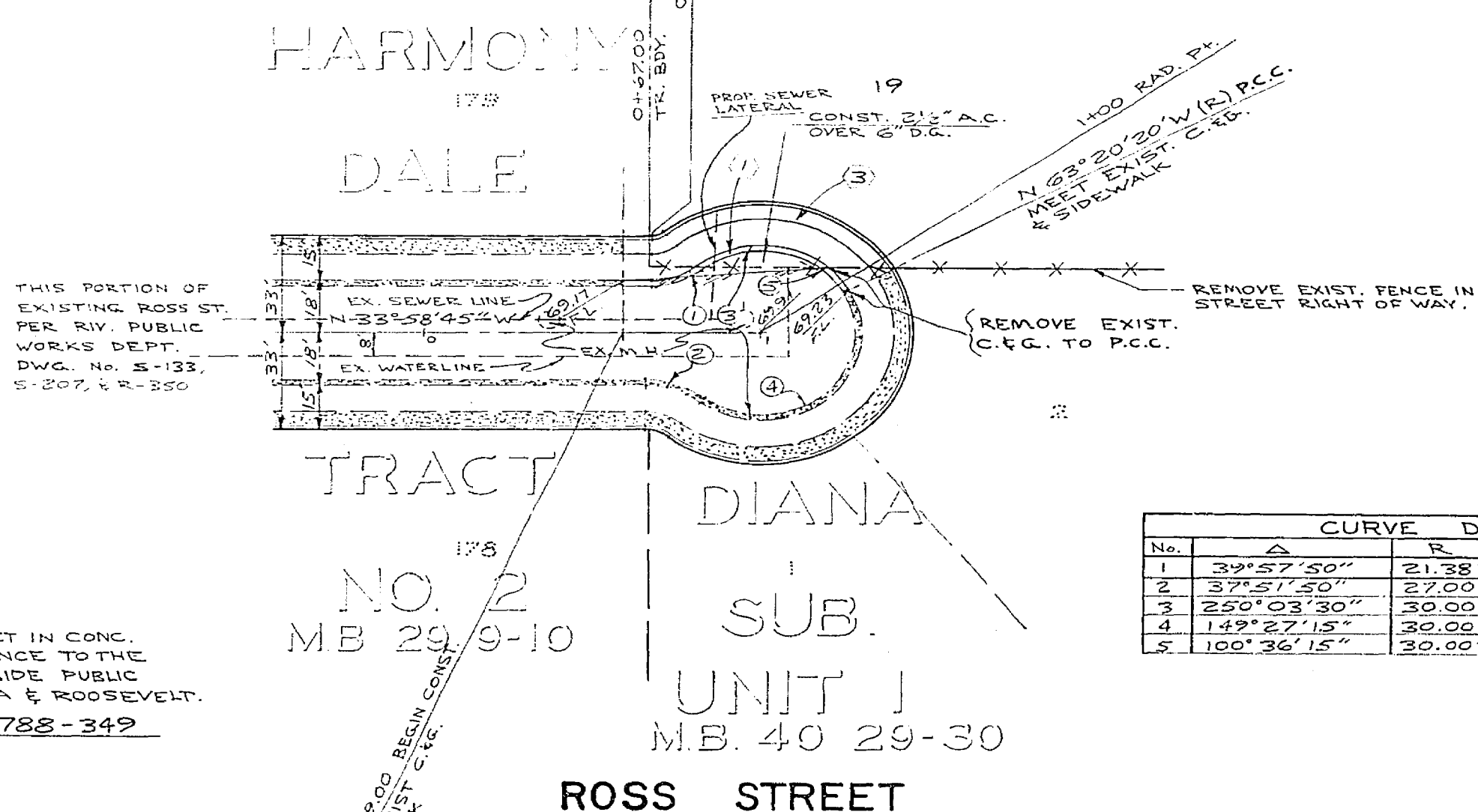
**BENCH MARK:**  
 BRASS DISC STAMPED 039-1924 SET IN CONC. LANDING OF THE MAGNOLIA ENTRANCE TO THE ARLINGTON BRANCH OF THE RIVERSIDE PUBLIC LIBRARY @ THE COR. OF MAGNOLIA & ROOSEVELT  
 ELEV. 758-349

<b>ALBERT A. WEBB ASSOCIATES</b> CIVIL ENGINEERS RIVERSIDE, CALIFORNIA APPROVED BY: <i>[Signature]</i> DATE: 3/15/17 R.E. No. 21884	REVISIONS 1. REVISED GRADES STA. 20+30.51 TO 27+03 TO BALANCE GORINGHAM 85 11-2-77	<b>CITY OF RIVERSIDE, CALIFORNIA</b> <b>PUBLIC WORKS DEPARTMENT</b>	<b>STREET PLAN &amp; PROFILE</b> TRACT 8837 ALBANY STREET	ACCOUNT No. R-2031 DRAWING NUMBER 2 OF 5 SCALE: HORIZ. 1"=40' VERT. 1"=4' INDEXED R.R.
	W.O. 76-26 FOR: ROBERT MILLER P.G. 1039 DESIGNED BY: E. DRAWN BY: 2/2/26 CHECKED BY:	APPROVED BY: <i>[Signature]</i> DATE: 10/10/17 PRINCIPAL ENGINEER PARK DEPARTMENT TRAFFIC DIVISION CHIEF PUB. WORKS ENGR.	APPROVED BY: <i>[Signature]</i> DATE: 10/10/17 DIRECTOR OF PUBLIC WORKS	DATE: 10/10/17





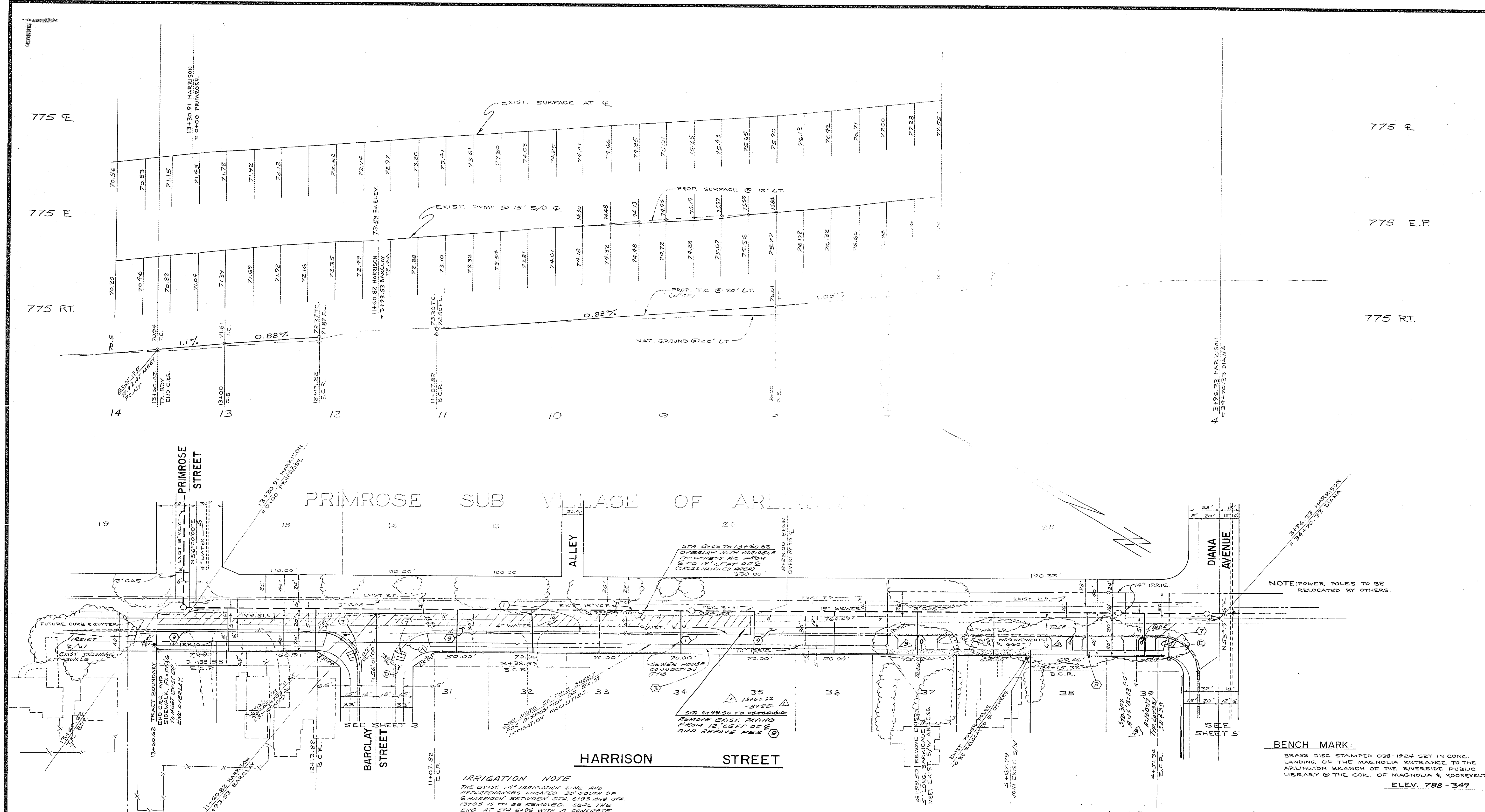
BRASS DISC STAMPED 038-1924 SET IN CONC. LANDING OF THE MAGNOLIA ENTRANCE TO THE ARLINGTON BRANCH OF THE RIVERSIDE PUBLIC LIBRARY @ THE COR. OF MAGNOLIA & ROOSEVELT. ELEV. 788-349



CURVE DATA				
No.	Δ	R	L	T
1	75°56'54"	27'	35.79'	21.08'
2	90°00'00"	27'	42.41'	27.00'
3	90°00'00"	35'	54.98'	35.00'

CURVE DATA				
No.	Δ	R	L	T
1	39°57'50"	21.38'	14.91'	7.77'
2	37°27'20"	27.00'	17.84'	9.22'
3	250°02'30"	30.00'	150.93'	
4	149°27'15"	30.00'	78.25'	109.84'
5	100°36'15"	30.00'	52.68'	36.14'

ALBERT A. WEBB ASSOCIATES CIVIL ENGINEERS RIVERSIDE, CALIFORNIA		CITY OF RIVERSIDE, CALIFORNIA PUBLIC WORKS DEPARTMENT		STREET PLAN & PROFILE	
APPROVED BY: <i>[Signature]</i> DATE: 3/10/40 R.E. No. 21884		APPROVED BY: <i>[Signature]</i> DATE: 3/10/40 DIRECTOR OF PUBLIC WORKS		ACCOUNT NO. DRAWING NUMBER <b>R-2031</b>	
W.O. 76-26 FOR: ROBERT MILLER		DESIGNED BY: B.E. DRAWN BY: [ ] CHECKED BY: [ ]		TRACT 8837 BARCLAY STREET ROSS STREET	
PUBLIC UTILITIES DEPT. ELECTRIC DIVISION		TRAFFIC DIVISION		SHEET <b>3</b> OF <b>5</b>	
APPROVED BY: DATE:		MARK REVISIONS APPR. DATE		SCALE: HORIZ. 1"=40' VERT. 1"=4'	



**IRRIGATION NOTE**  
 THE EXIST. 4" IRRIGATION LINE AND FITTINGS ARE LOCATED 30' SOUTH OF HARRISON BETWEEN STA. 6195 AND STA. 1305 IS TO BE REMOVED. SEAL THE END AT STA. 6195 WITH A CONCRETE PLUG AT THE FRONT CURB LINE.

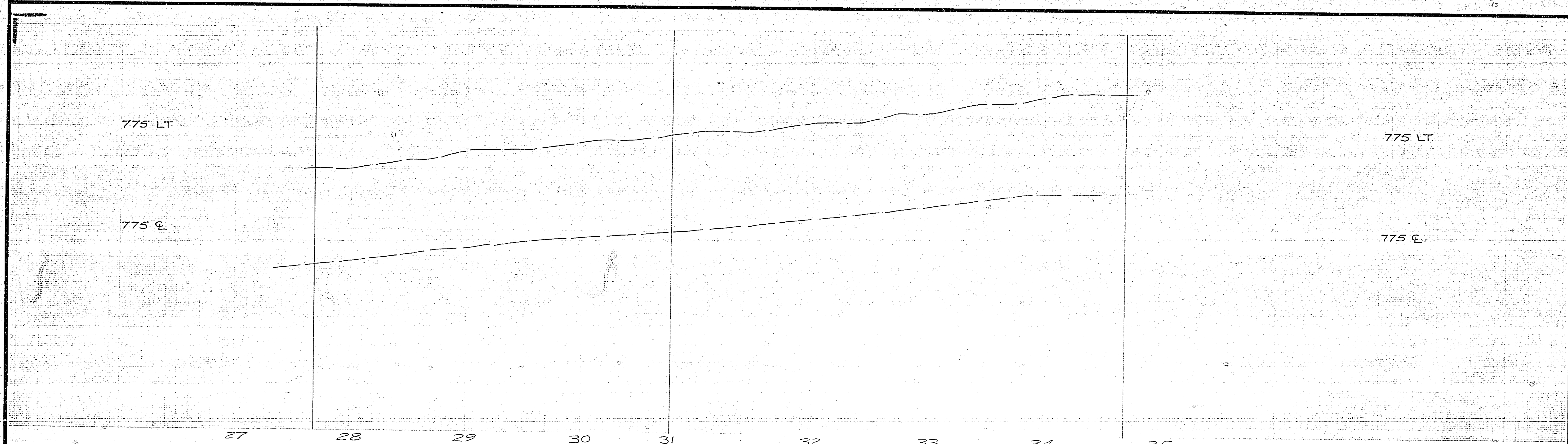
ALBERT A. WEBB ASSOCIATES  
 CIVIL ENGINEERS  
 RIVERSIDE, CALIFORNIA  
 APPROVED BY: *[Signature]* DATE 3/19/77  
 R.E. No. 21884  
 W.O. 76-26 FOR ROBERT MILLER, P.M. 1039

NO.	DATE	REVISIONS
1	3/19/77	REVISED DANA APPROXIMATE LOTS 37-39 ENCL.
2	3/19/77	REVISED PARK ENTRANCE STATION EXHIBIT
3	3/19/77	REVISED PARK ENTRANCE STATION EXHIBIT

CITY OF RIVERSIDE, CALIFORNIA  
 PUBLIC WORKS DEPARTMENT  
 APPROVED BY: *[Signature]* BY DATE  
 PRINCIPAL ENGINEER  
 TRAFFIC DIVISION  
 APPROVED BY: *[Signature]* BY DATE  
 DIRECTOR OF PUBLIC WORKS  
 DATE: 3/19/77

**STREET PLAN & PROFILE**  
**HARRISON STREET**  
**DIANA AND PRIMROSE**  
**TRACT 8837**  
 SCALE: HORIZ. 1"=40' VERT. 1"=4'

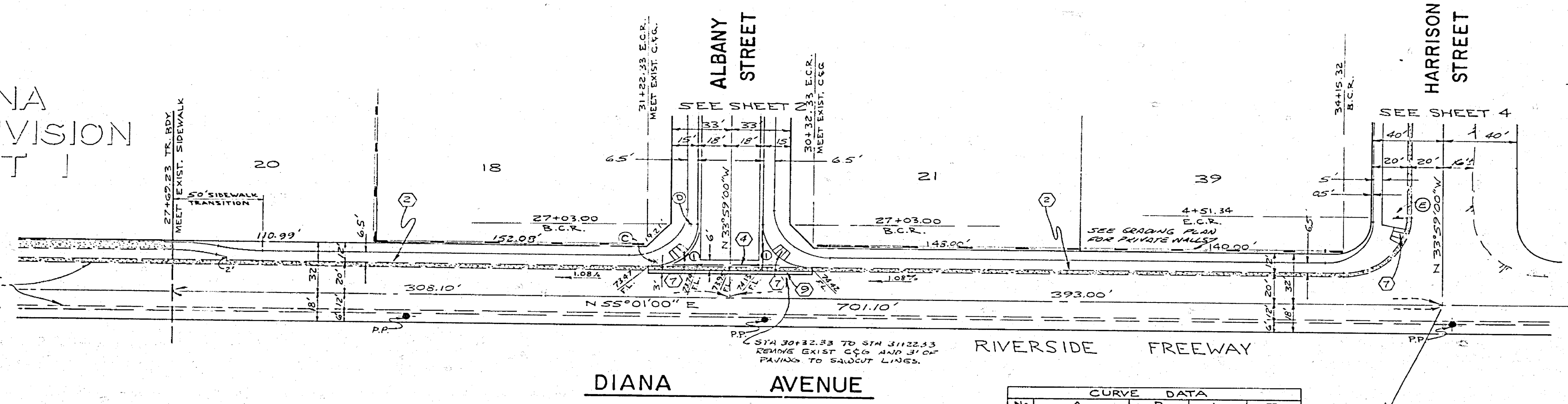
ACCOUNT NO.  
 DRAWING NUMBER  
**R-2031**  
 SHEET **4** OF **5**  
 76-26-A



DIANA  
SUBDIVISION  
UNIT I

PRIMROSE SUB.  
VILLAGE OF  
ARLINGTON

EXIST. IMPROVEMENTS PER  
STATE HWY. PLAN No. 3000  
RIV-43-B-SIV. SHT. 17 &  
CITY OF RIVERSIDE, PLAN  
R-350



CURVE DATA				
No	A	R	L	T
0	90°00'00"	27.00'	42.41'	27.00'

PLANNING DEPARTMENT JSC 9/22/77 APPROVED BY AS DEPUTY	ALBERT A. WEBB ASSOCIATES CIVIL ENGINEERS RIVERSIDE, CALIFORNIA APPROVED BY DATE 3/25/77 R.E. No. 21824	CITY OF RIVERSIDE, CALIFORNIA PUBLIC WORKS DEPARTMENT APPROVED BY DATE 10/11/77 DIRECTOR OF PUBLIC WORKS	STREET PLAN & PROFILE TRACT 8837 DIANA AVENUE SCALE: HORIZ. 1"=40' VERT. 1"=4'	ACCOUNT No. DRAWING NUMBER R-2031 SHEET 5 OF 5 76-26-A
	W.O. 76-26 FOR: FR. 1031 DESIGNED BY: EG DRAWN BY: JSC CHECKED BY:	REVISIONS APPR. DATE	TRAFFIC DIVISION CHIEF PUB. WKS ENGR	DATE 10/11/77

