

INDEX OF SHEETS

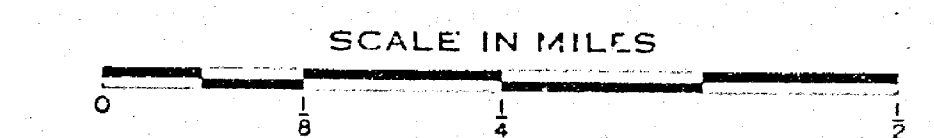
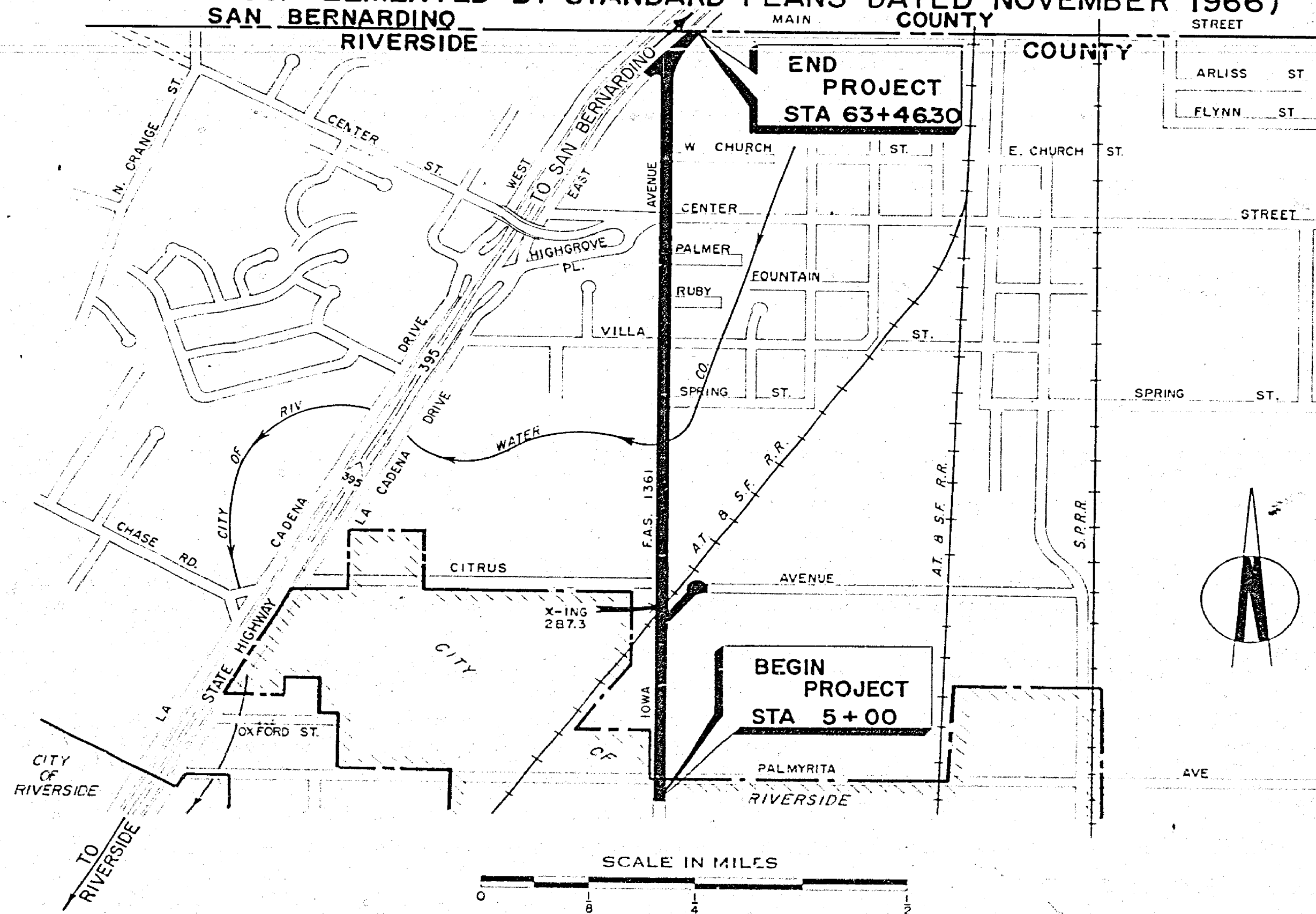
SHEET NO. 1	TITLE PAGE
SHEETS NO. 2-3	TYPICAL SECTIONS
SHEETS NO. 4-8	PLAN & PROFILE
SHEETS NO. 9-10	INTERSECTION DETAILS
SHEET NO. 11	TRANSITION & INTERSECTION DETAILS
SHEET NO. 12	PALM TREE RELOCATION PLAN
SHEETS NO. 13-14	CANAL CROSSING DETAILS
SHEET NO. 15	DRAINAGE STRUCTURE DETAILS & MISCELLANEOUS DETAILS
SHEET NO. 16	RETAINING WALL DETAILS
SHEET NO. 17	SUMMARY OF DRAINAGE STRUCTURES
SHEETS NO. 18-20	SIGNALIZATION & LIGHTING PLANS
SHEET NO. 21-23	SPECIAL DETAILS AND SIGNS
SHEETS NO. 1-67	CROSS SECTIONS & SUPERELEVATION DIAGRAM

APPLICABLE STANDARD PLAN SHEETS

A62-A1	D72-5		ES-1-3
A62-B1	D75-5	N8-3	ES-2A-2
A62-C1	D77-7	B3-3	ES-2B-2
A73-5	D78		ES-3A-1
A78-2	D87-A		ES-3B-8
	D88		

STATE OF CALIFORNIA
TRANSPORTATION AGENCY
DEPARTMENT OF PUBLIC WORKS
DIVISION OF HIGHWAYS
PROJECT PLANS FOR CONSTRUCTION ON
RIVERSIDE
COUNTY HIGHWAY
FEDERAL AID SECONDARY PROJECT
SU-SUG-1361(I)
IOWA AVENUE

BETWEEN 0.1 MILE SOUTH OF PALMYRITA AVENUE IN THE CITY OF RIVERSIDE
AND THE SAN BERNARDINO COUNTY LINE AT MAIN STREET
(TO BE SUPPLEMENTED BY STANDARD PLANS DATED NOVEMBER 1966)

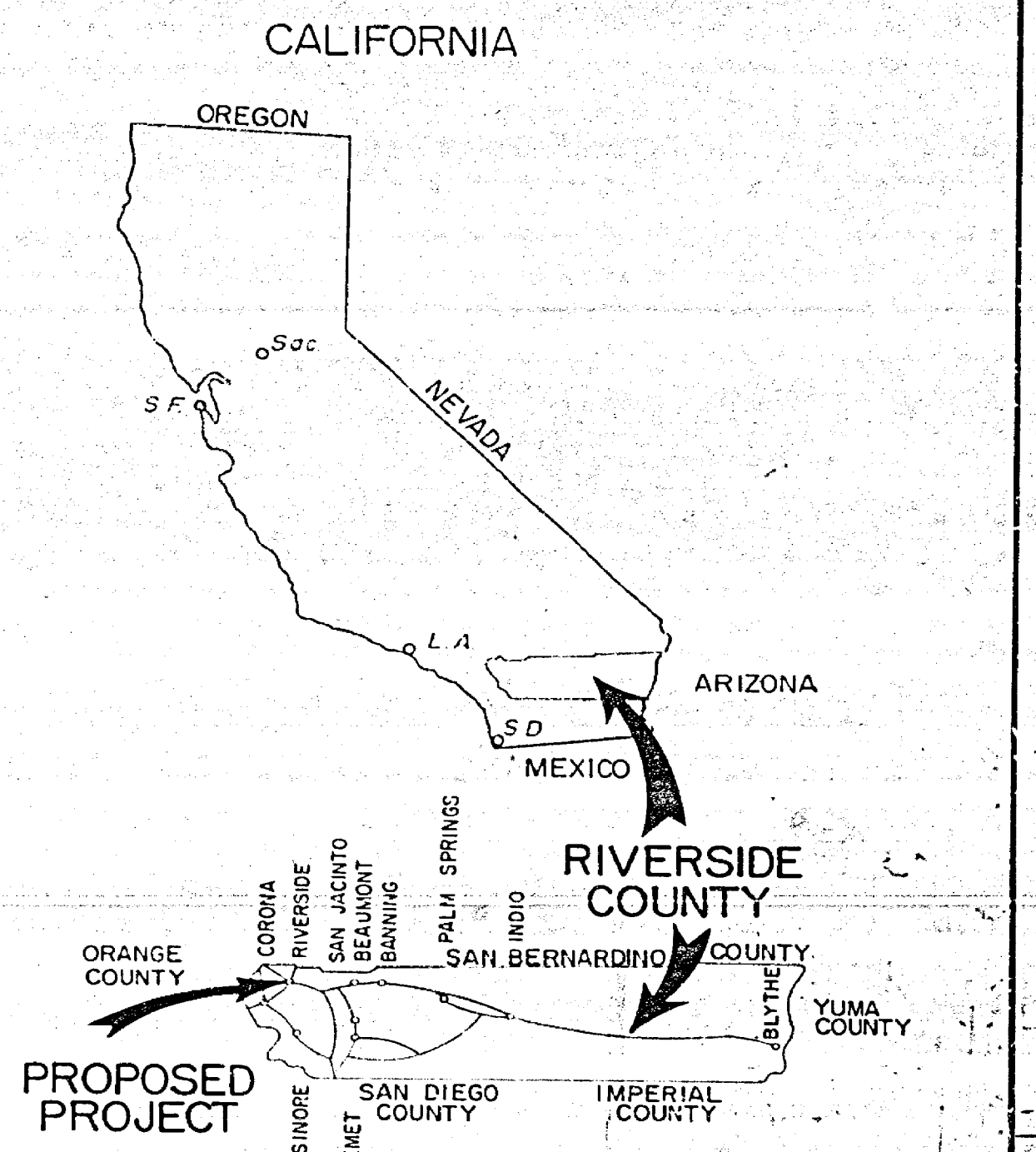


NET LENGTH 1.11 MILES

CONVENTIONAL SIGNS

County Line	---	Traveled Way	=====
City or Town Limits	- - - - -	Railroad Tracks	+ + + + +
Township Line	- - - - -	Levee	=====
Section Line	- - - - -	Culverts	=====
Grant Line	- - - - -	Drop Inlet	=====
Fence	- - - - -	Power Pole	=====
Guard Rail	- - - - -	Power Tower	=====
Unfenced Property	- - - - -	Telegraph or Telephone Pole	=====
Right of Way Line	- - - - -	Marsh	=====
Base or Survey Line	- - - - -		

DIST.	COUNTY	PROJECT	SHEET No.	TOTAL SHEETS
OB	RIV	SU-SUG-1361 (I)	1	23



CITY OF RIVERSIDE

ENGINEER & PUBLIC WORKS DIRECTOR - R.C.E. NO. 8134

COUNTY OF RIVERSIDE

A. C. Keith
ROAD COMMISSIONER - R.C.E. NO. 4368

Earl McNeill
CHAIRMAN, BOARD OF SUPERVISORS

STATE OF CALIFORNIA

J. A. Legarra
DISTRICT ENGINEER - R.C.E. NO. 6504

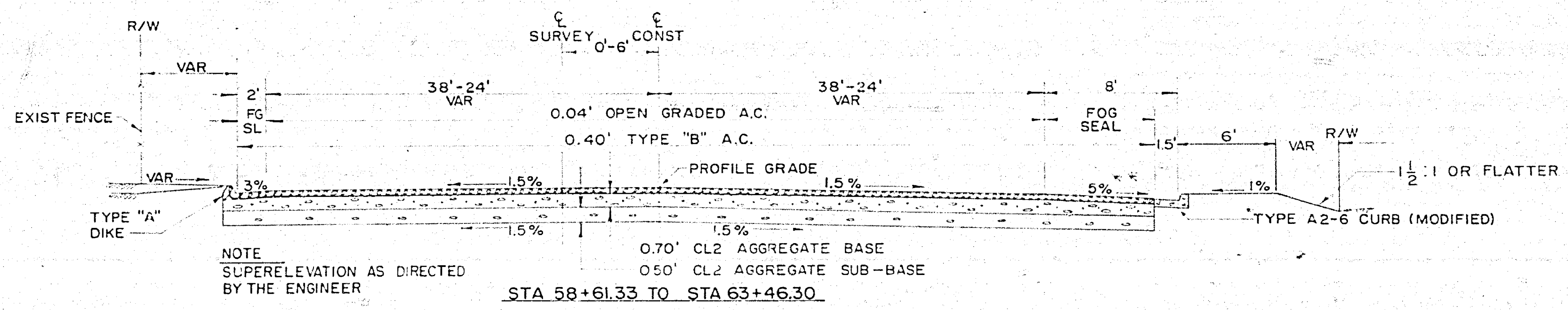
APPROVED, *September 5* 1967

J. A. Legarra
STATE HIGHWAY ENGINEER - R.C.E. NO. 1845

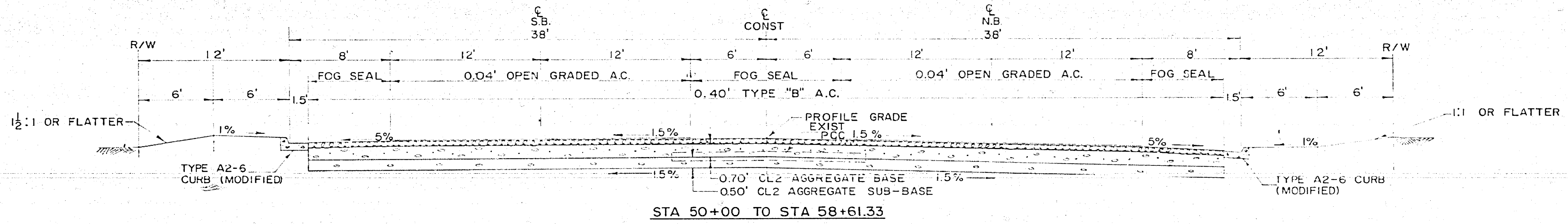
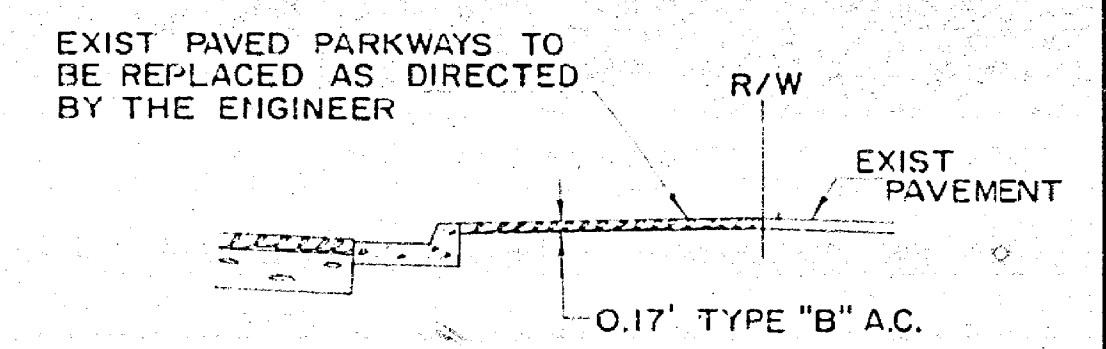
BY *J. A. Legarra*
DEPUTY STATE ENGINEER - R.C.E. NO. 3630

R.C.E. No. 4388
 ROAD COMMISSIONER
 DISTRICT ENGINEER
 APPROVED September 5, 1967
 ASST. CITY & COUNTY PROJECTS ENGINEER R.C.E. NO. 7477
 ASSISTANT STATE HIGHWAY ENGINEER OPERATIONS R.C.E. NO. 6892

DESIGN DESIGNATION
 ADT (66) = 5,030 D = 50.1%
 ADT (86) = 16,000 T = 4.5%
 DHV (86) = 1,920 V = 35 MPH

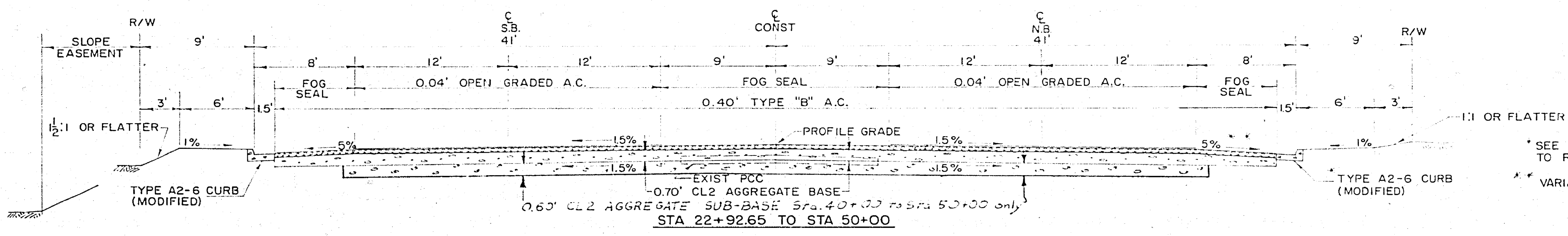


NOTE
 SUPERELEVATION AS DIRECTED
 BY THE ENGINEER
 STA 58+61.33 TO STA 63+46.30



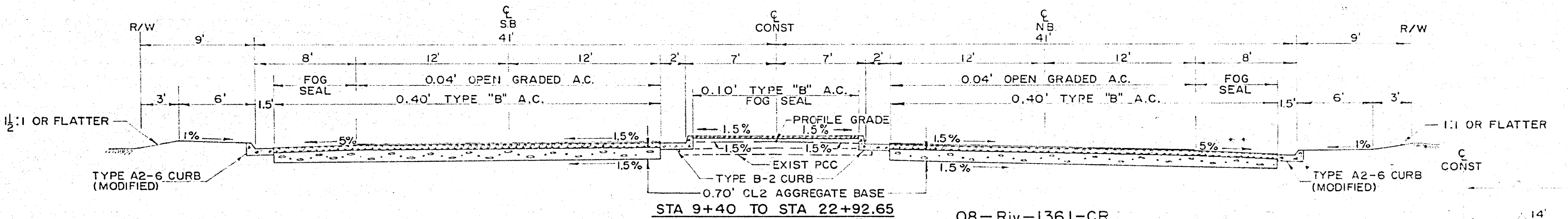
STA 50+00 TO STA 58+61.33

NOTE: REMOVE EXISTING PCC PAVEMENT WITHIN LIMITS OF PROJECT AS DIRECTED BY THE ENGINEER



STA 22+92.65 TO STA 50+00

* SEE PLANS FOR LIMITS OF EXISTING CURB TO REMAIN
 ** VARIABLE TO JOIN EXISTING CURB



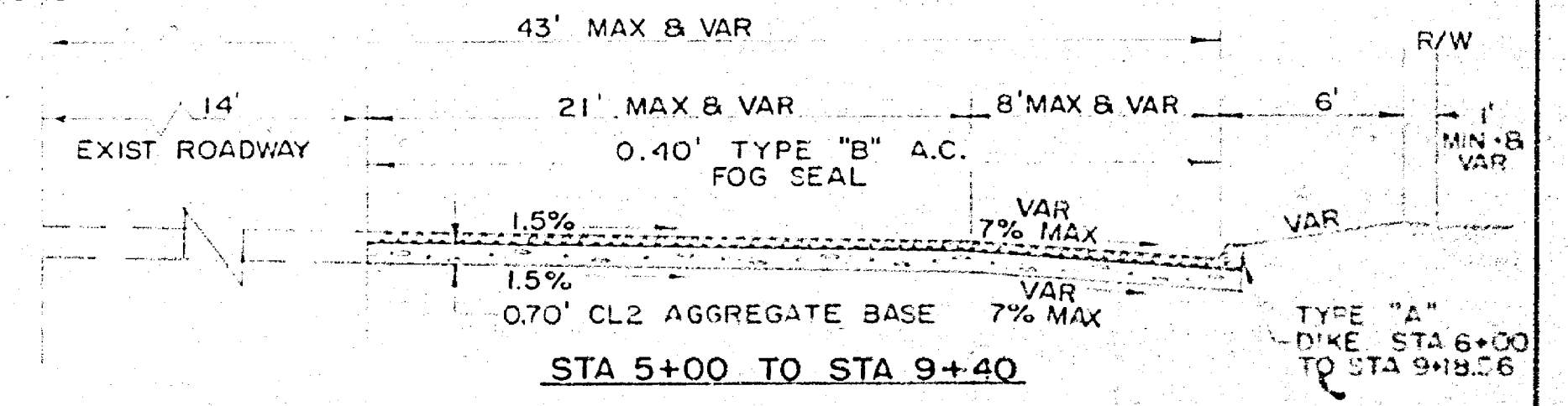
STA 9+40 TO STA 22+92.65

08-Riv-1361-CR

TYPICAL ROAD SECTIONS

IOWA AVENUE
 SU-SUG-1361(1)

SCALE 1" = 5'

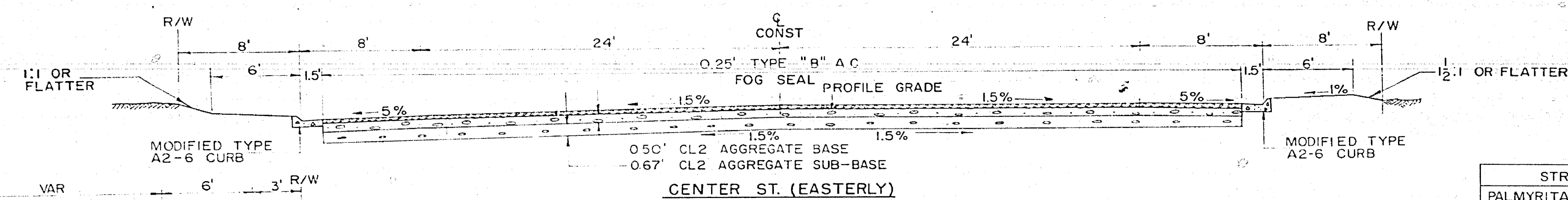
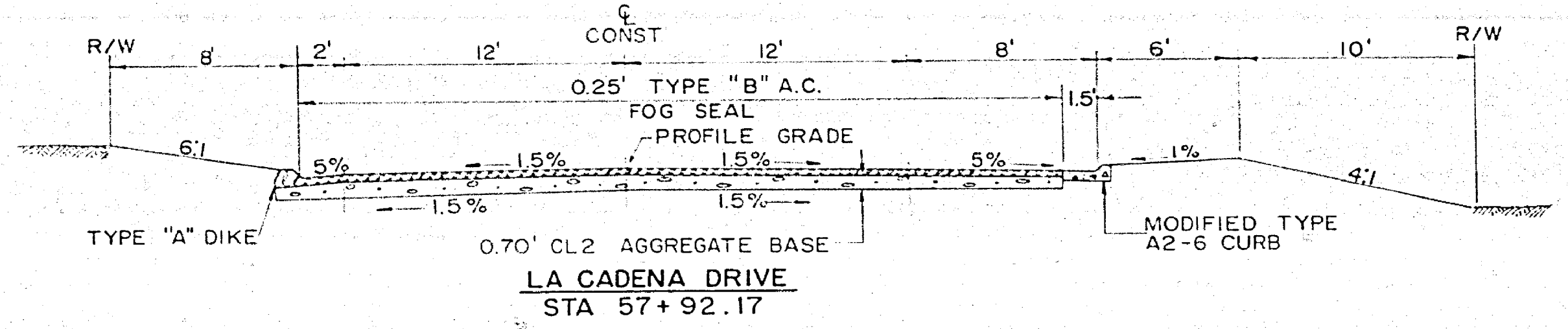
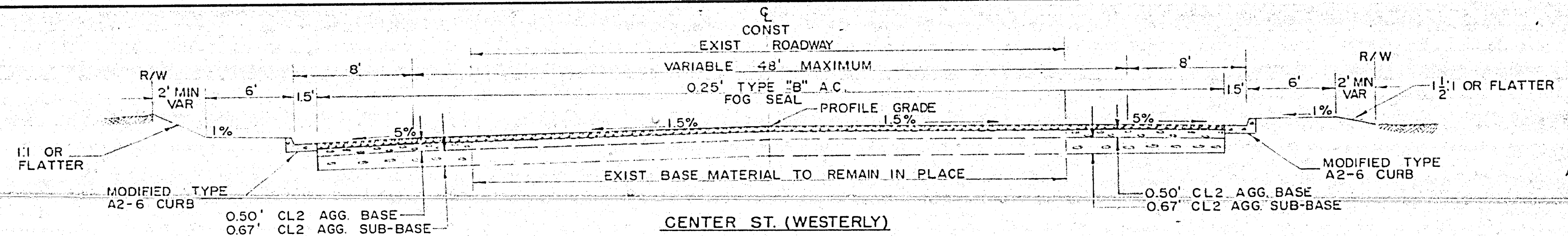
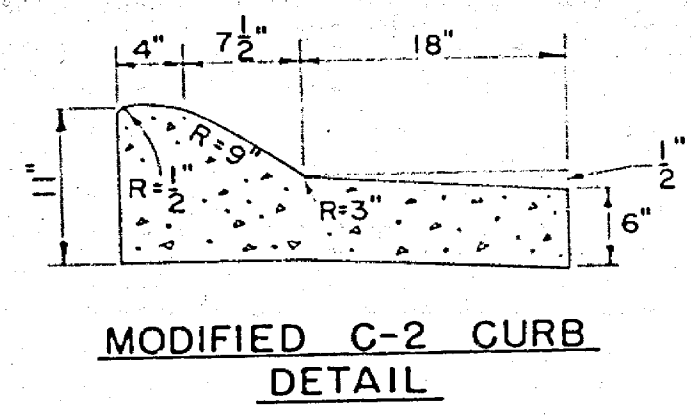
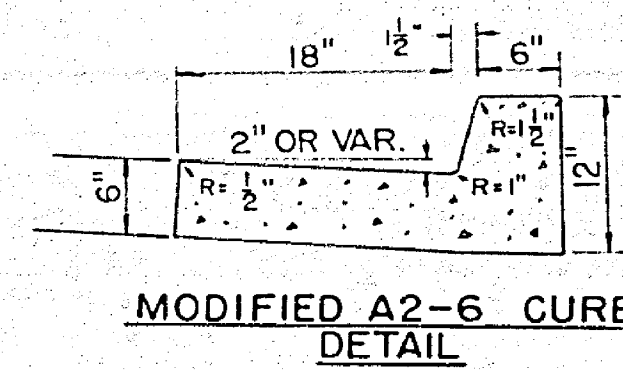


STA 5+00 TO STA 9+40

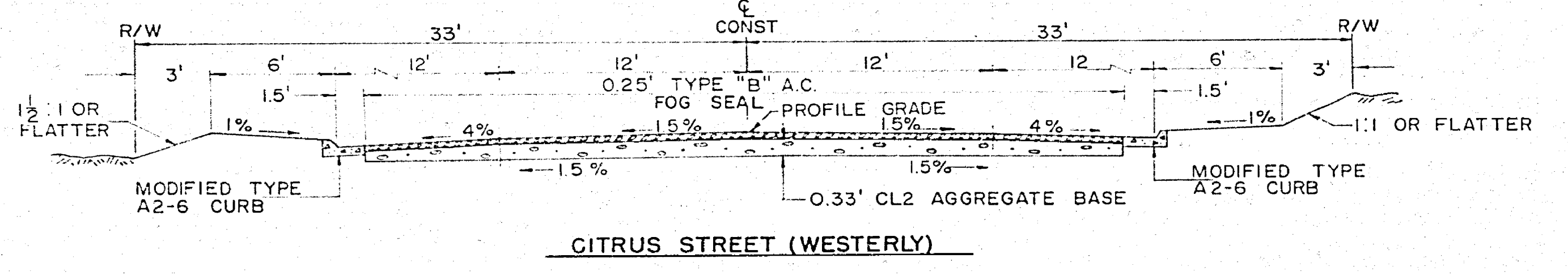
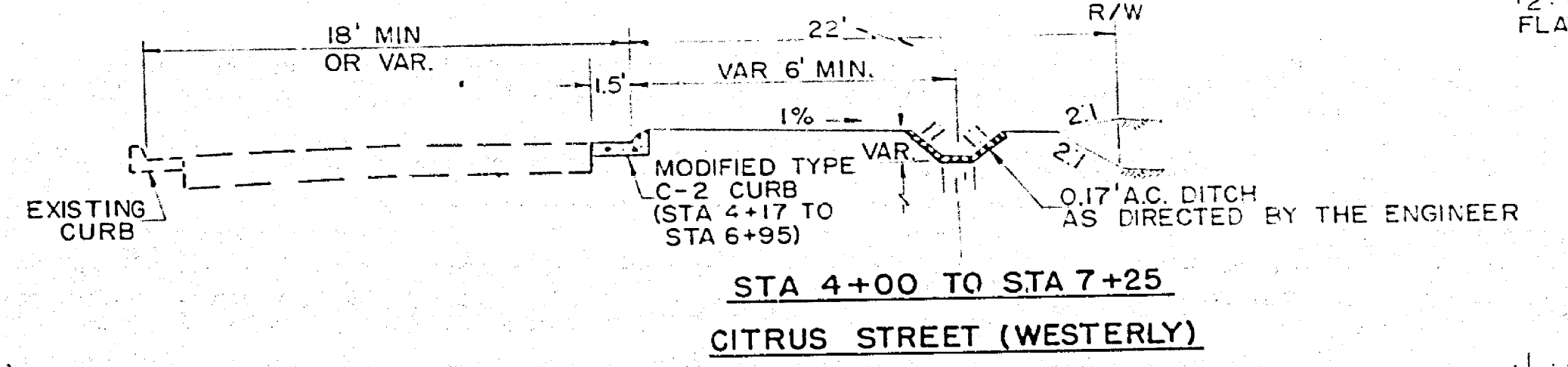
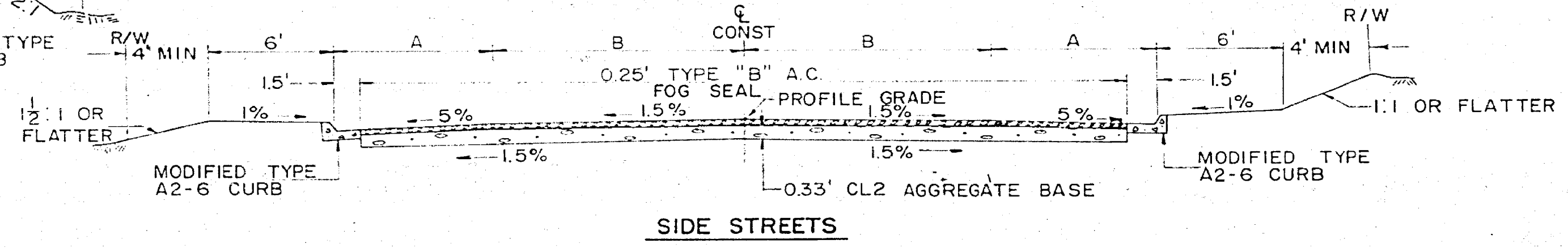
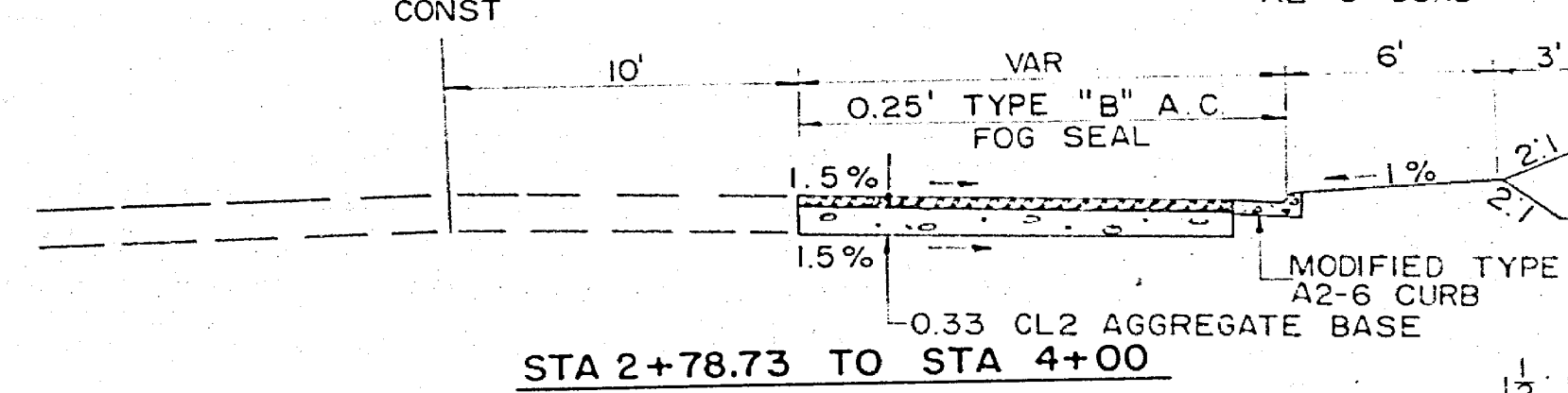
TYPE "A" DIKE STA 6+00 TO STA 9+46.56

- ASPHALT CONC. (A.C.)
 - AGGREGATE BASE (AB)
 - AGGREGATE SUBBASE (AS)
 - PORTLAND CEMENT CONCRETE (PCC)
 - OPEN GRADED ASPHALT CONCRETE OVER TYPE A, B, OR C ASPHALT CONC. (OP.GR. A.C.)
 - ORIGINAL GROUND
- DIMENSIONS ARE SUBJECT TO TOLERANCES SPECIFIED IN THE STANDARD SPECIFICATIONS

G. W. Smith
 ROAD COMMISSIONER R.C.E. NO. 4388
 DISTRICT ENGINEER DIST. OB
 APPROVED *September 5* 1967
 ASST. CITY & COUNTY PROJECTS ENGINEER R.C.E. NO. 7477
W. H. Jones
 ASSISTANT STATE HIGHWAY ENGINEER OPERATIONS R.C.E. NO. 6692

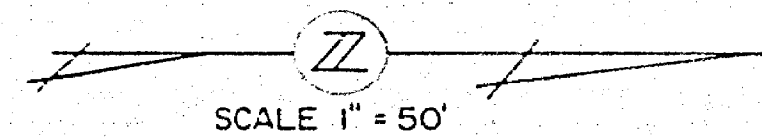


SIDE STREETS		
STREETS	A	B
PALMYRITA ELY	12'	12'
PALMYRITA WLY	8'	12'
CITRUS ELY	12'	12'
SPRING	8'	12'
VILLA	8'	12'
RUBY	7'	11'
PALMER	7'	11'
CHURCH	7'	11'



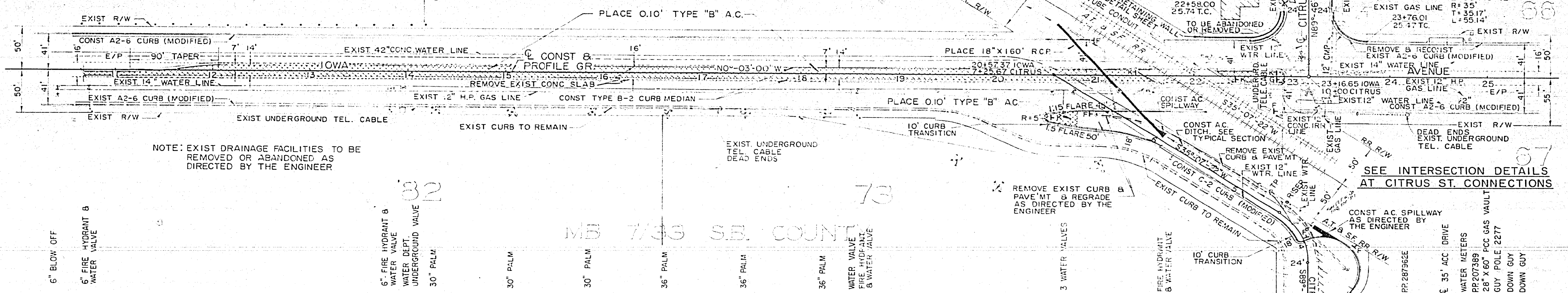
08-Riv-1361-CR
TYPICAL ROAD SECTIONS
 IOWA AVENUE
 SU-SUG-1361(1)

SCALE 1"=5'



NOTE: TYPE B-2 CURB
 MEDIAN, STA 10+40
 TO STA 22+92.65
 SEE TYPICAL SECTION

SEE INTERSECTION DETAILS
 AT CITRUS ST. CONNECTIONS

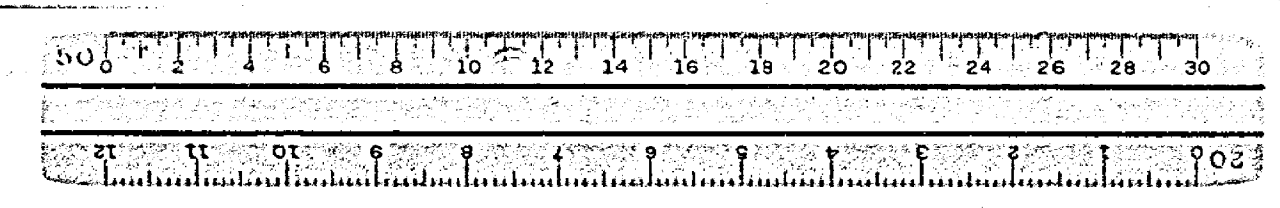
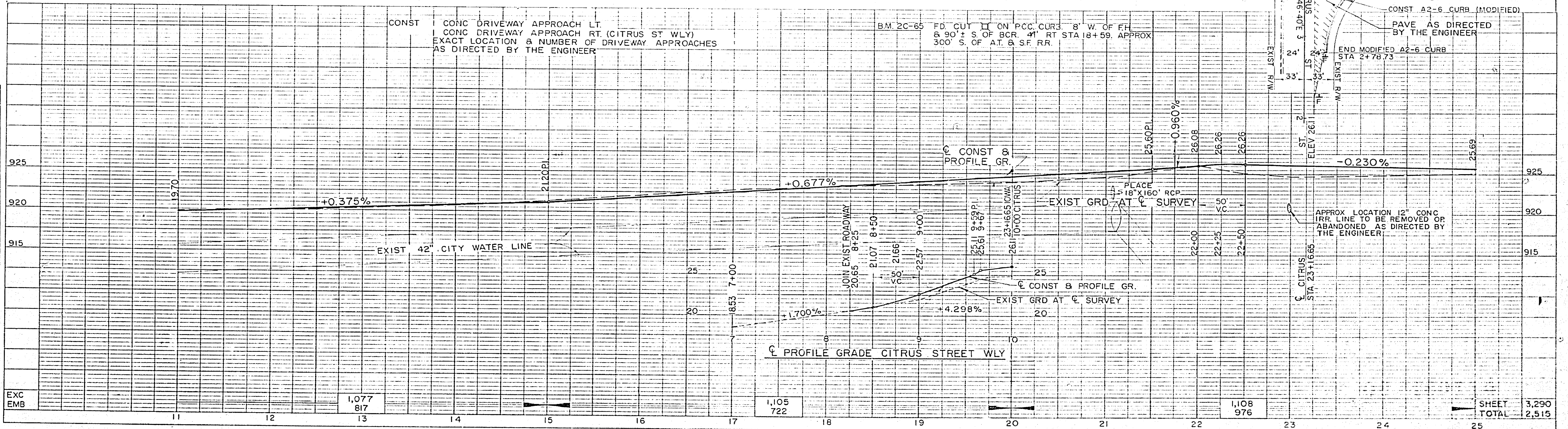


NOTE: EXIST DRAINAGE FACILITIES TO BE
 REMOVED OR ABANDONED AS
 DIRECTED BY THE ENGINEER

REMOVE EXIST CURB &
 PAVEMENT & REGRADE
 AS DIRECTED BY THE
 ENGINEER

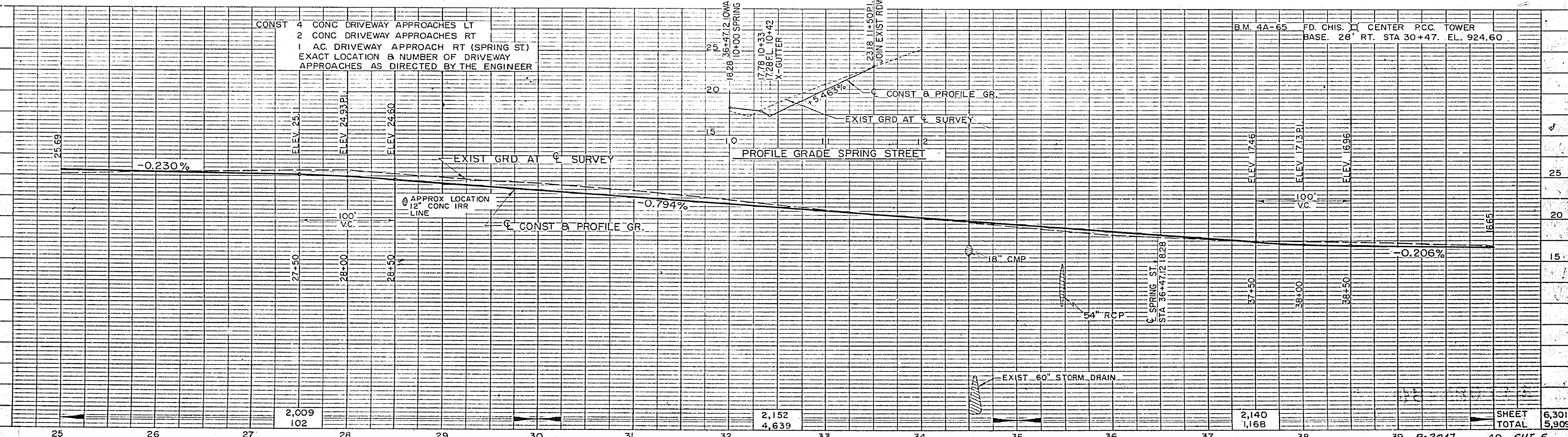
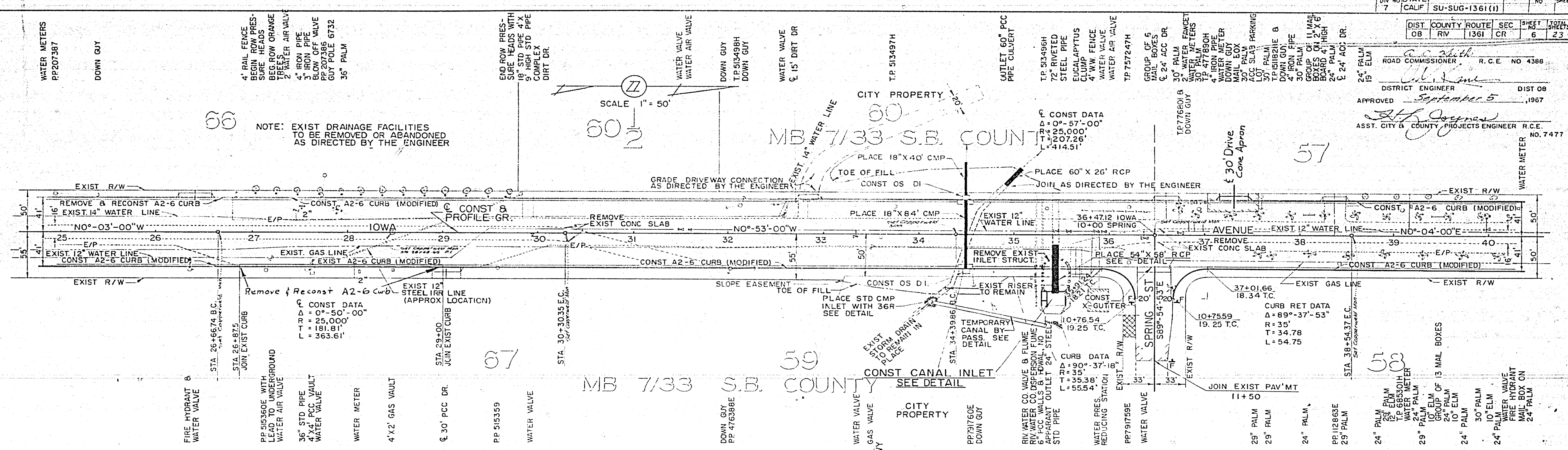
DATE	
BY	
REVISIONS	
1. DATE	
2. DESCRIPTION	
3. DRAWN BY	
4. CHECKED BY	
5. APPROVED BY	

DATE	
BY	
REVISIONS	
1. DATE	
2. DESCRIPTION	
3. DRAWN BY	
4. CHECKED BY	
5. APPROVED BY	



ROAD COMMISSIONER R.C.E. NO. 4388
 DISTRICT ENGINEER DIST 08
 APPROVED September 5, 1967
 ASST. CITY & COUNTY PROJECTS ENGINEER R.C.E. NO. 7477

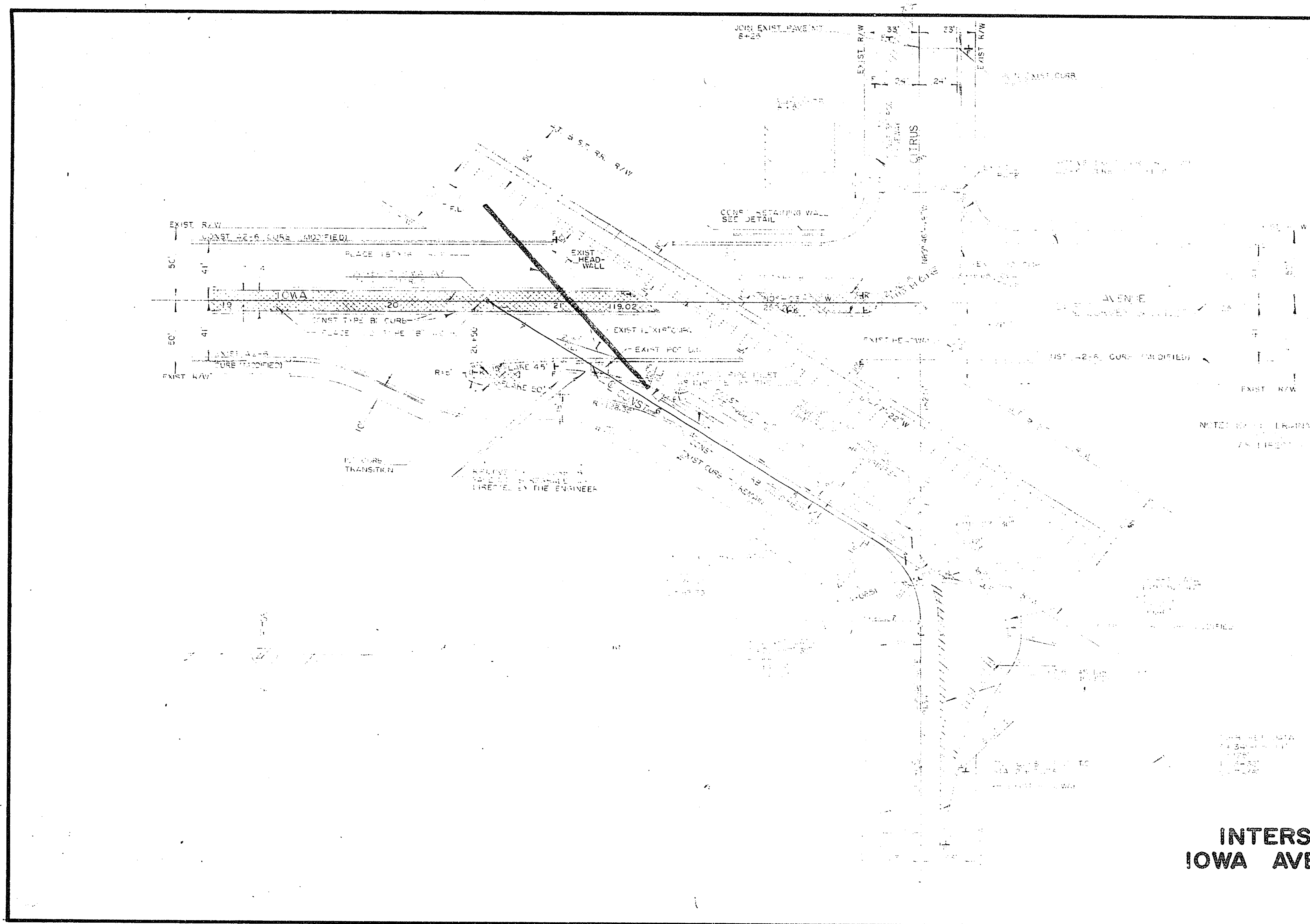
PLAN	DATE
DATE	
BY	
CHECKED	
DESIGNED	
PROJECT	



25	26	27	28	29	30	31	32	33	34	35	36	37	38	39	40
2,009	102						2,152	4,639				2,140	1,168		6,301
														SHEET TOTAL	6,301
															5,909
														R-2047	SHT. 5

DIV. NO.	STATE	FEDERAL PROJECT NO.	SHEET NO.	TOTAL SHEETS
7	CALIF	SU-SUG-1361 (1)	9	23
DIST	COUNTY	ROUTE	SEC	
08	RIV	1361	CR	

ROAD COMMISSIONER R.C.E. NO. 4388
DISTRICT ENGINEER DIST 08
APPROVED *September 5* 1967
ASST. CITY & COUNTY PROJECTS ENGINEER R.C.E. NO. 7477



NOTES: SEE DRAINAGE PLAN FOR
ADDITIONAL INFORMATION

**INTERSECTION DETAILS AT
IOWA AVENUE & CITRUS STREET**

SCALE 1" = 30'

SH 6 R-2047

9

DIST	COUNTY	ROUTE	SEC	SHEET NO.	TOTAL SHEETS
08	RIV	1361	CR	13	23

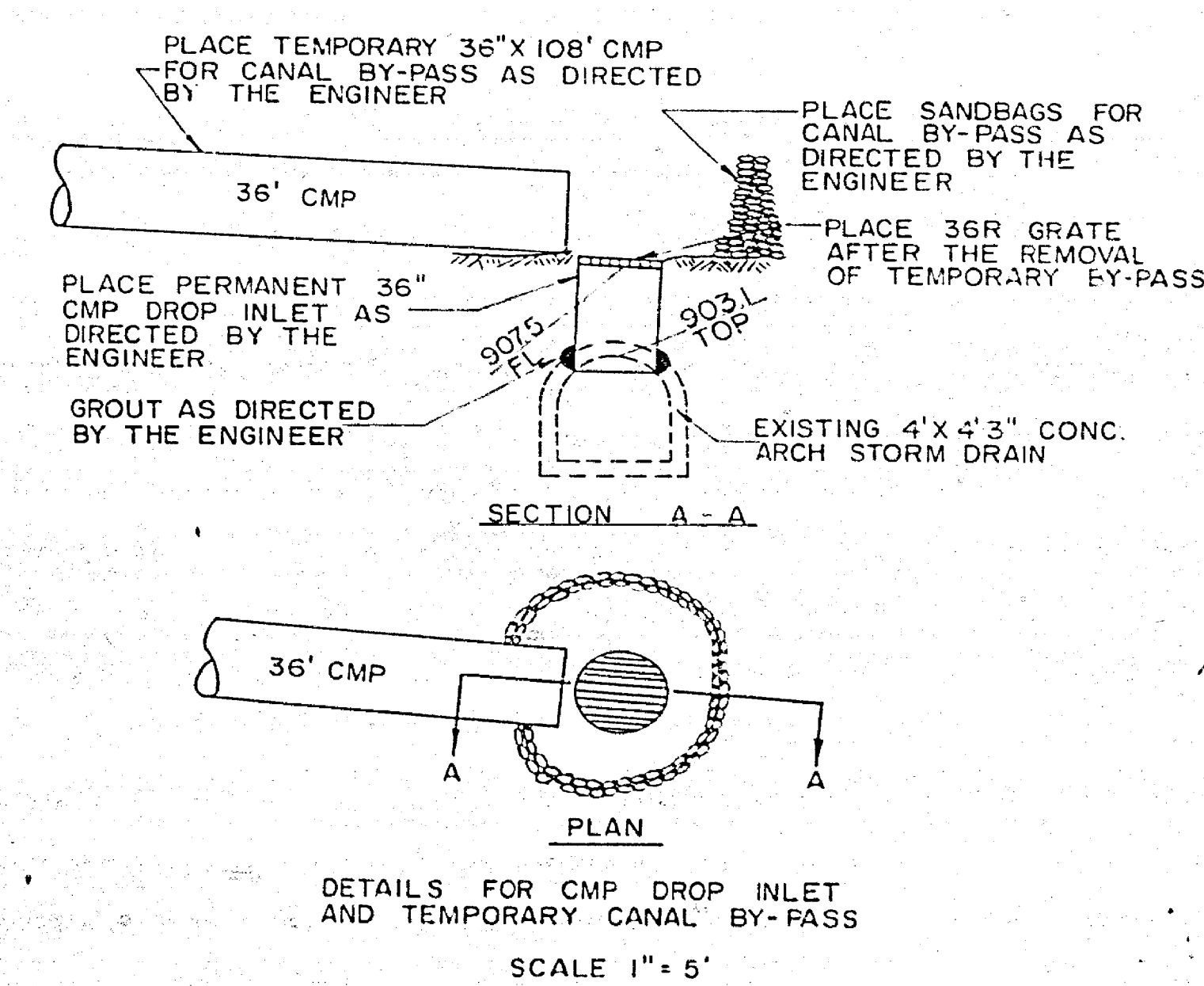
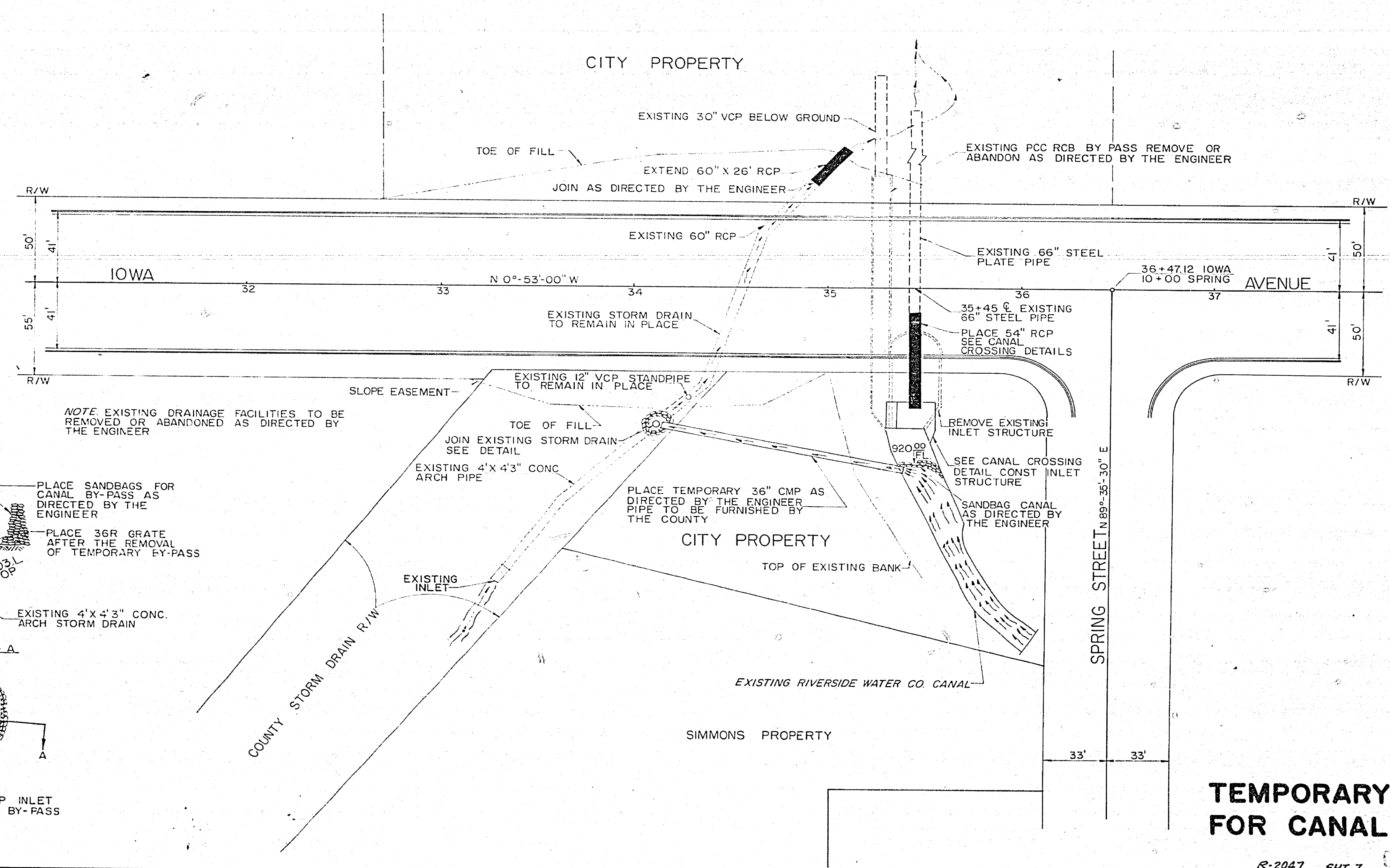
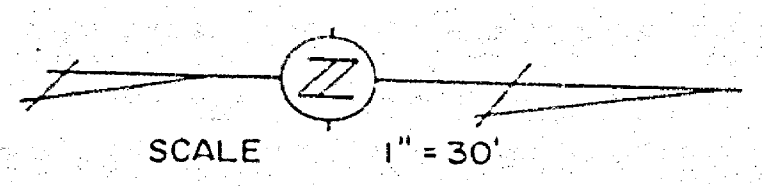
DIST	COUNTY	ROUTE	SEC	SHEET NO.	TOTAL SHEETS
08	RIV	1361	CR	13	23

ROAD COMMISSIONER R.C.E. NO. 4388

DISTRICT ENGINEER DIST. 08

APPROVED *September 5* 1967

ASST. CITY & COUNTY PROJECTS ENGINEER R.C.E. NO. 7477



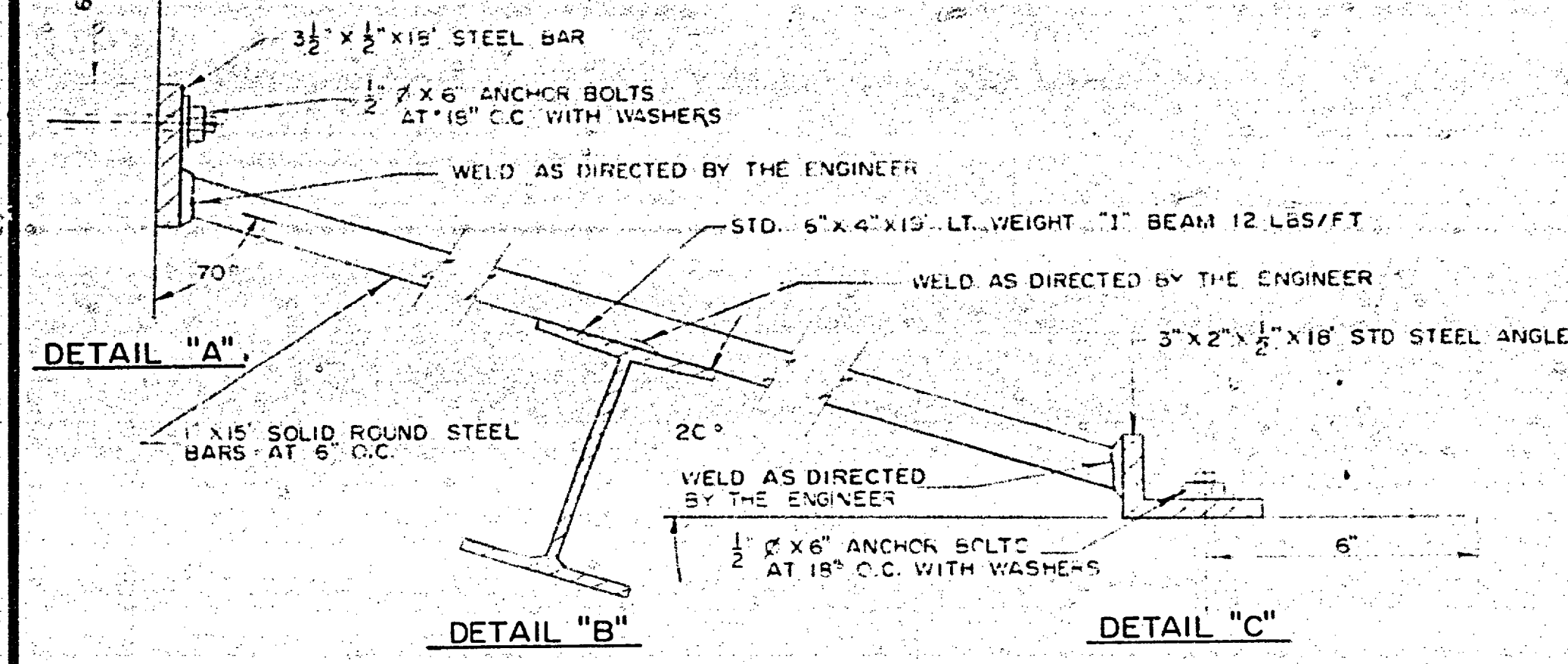
TEMPORARY BY-PASS FOR CANAL CROSSING

R-2047 SHT. 7 08-480114

13

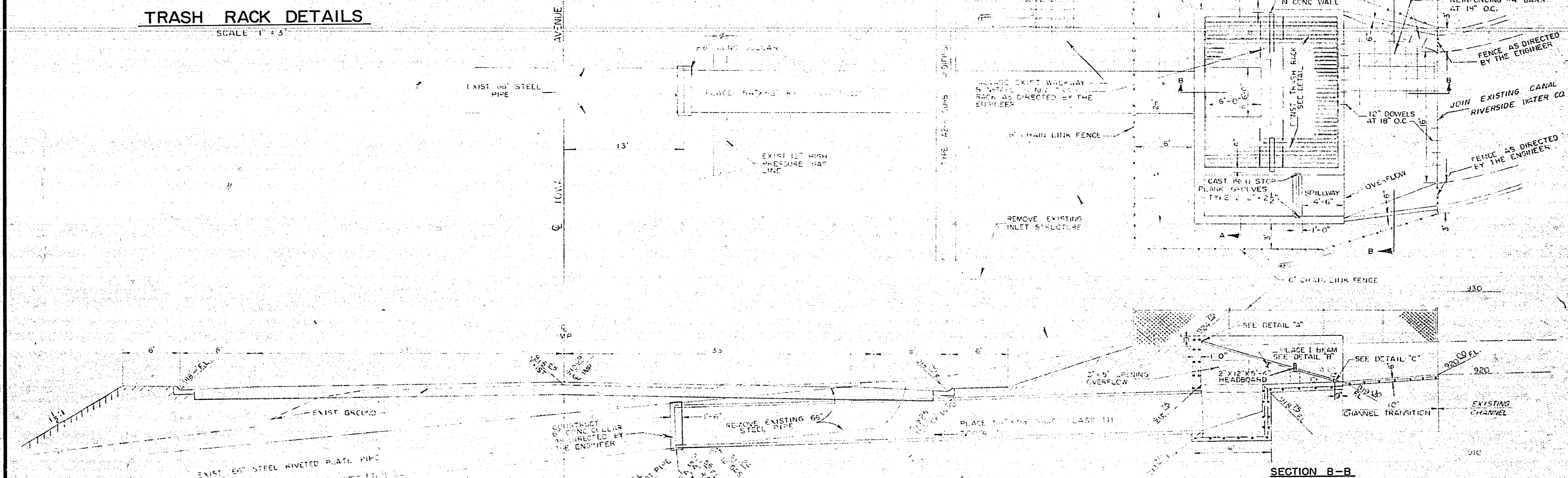
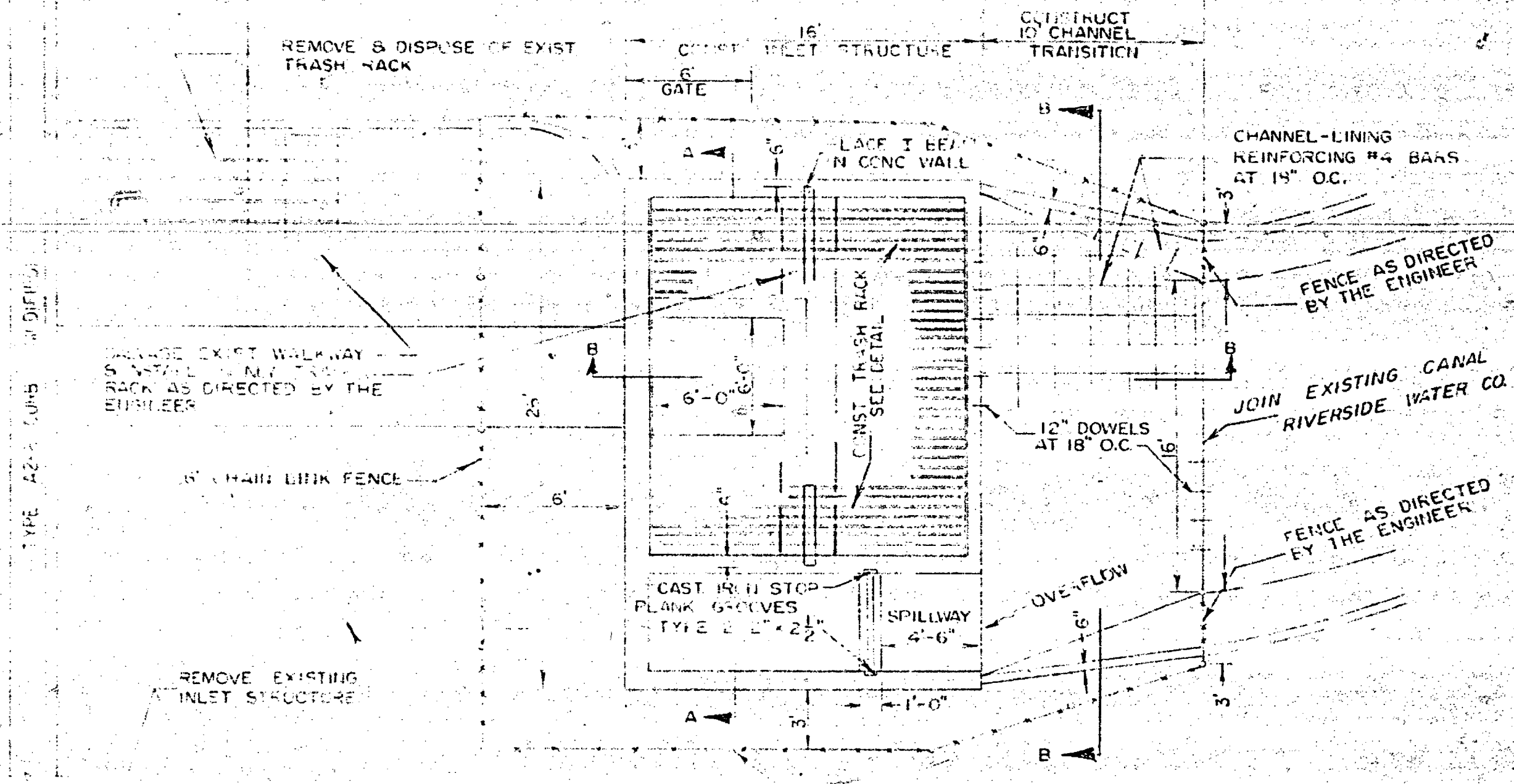
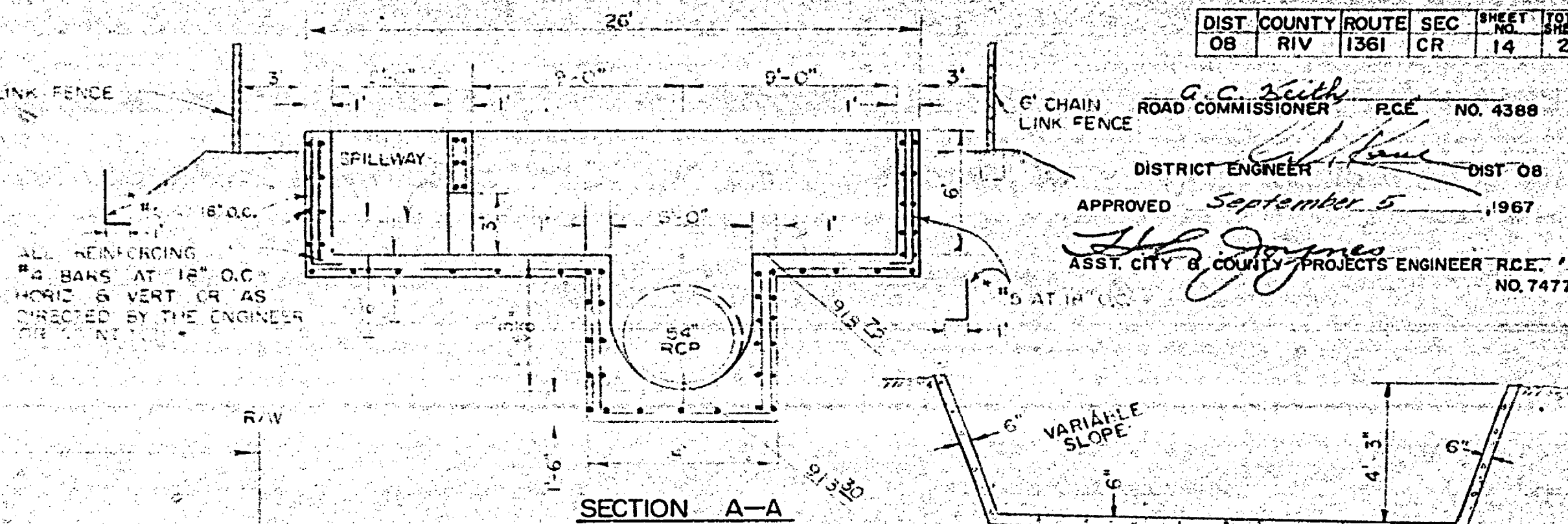
DIST	COUNTY	ROUTE	SEC	SHEET NO.	TOTAL SHEETS
08	RIV	1361	CR	14	23

ROAD COMMISSIONER
 DISTRICT ENGINEER
 APPROVED September 5, 1967
 ASST. CITY & COUNTY PROJECTS ENGINEER R.C.E.
 NO. 7477



TRASH RACK DETAILS

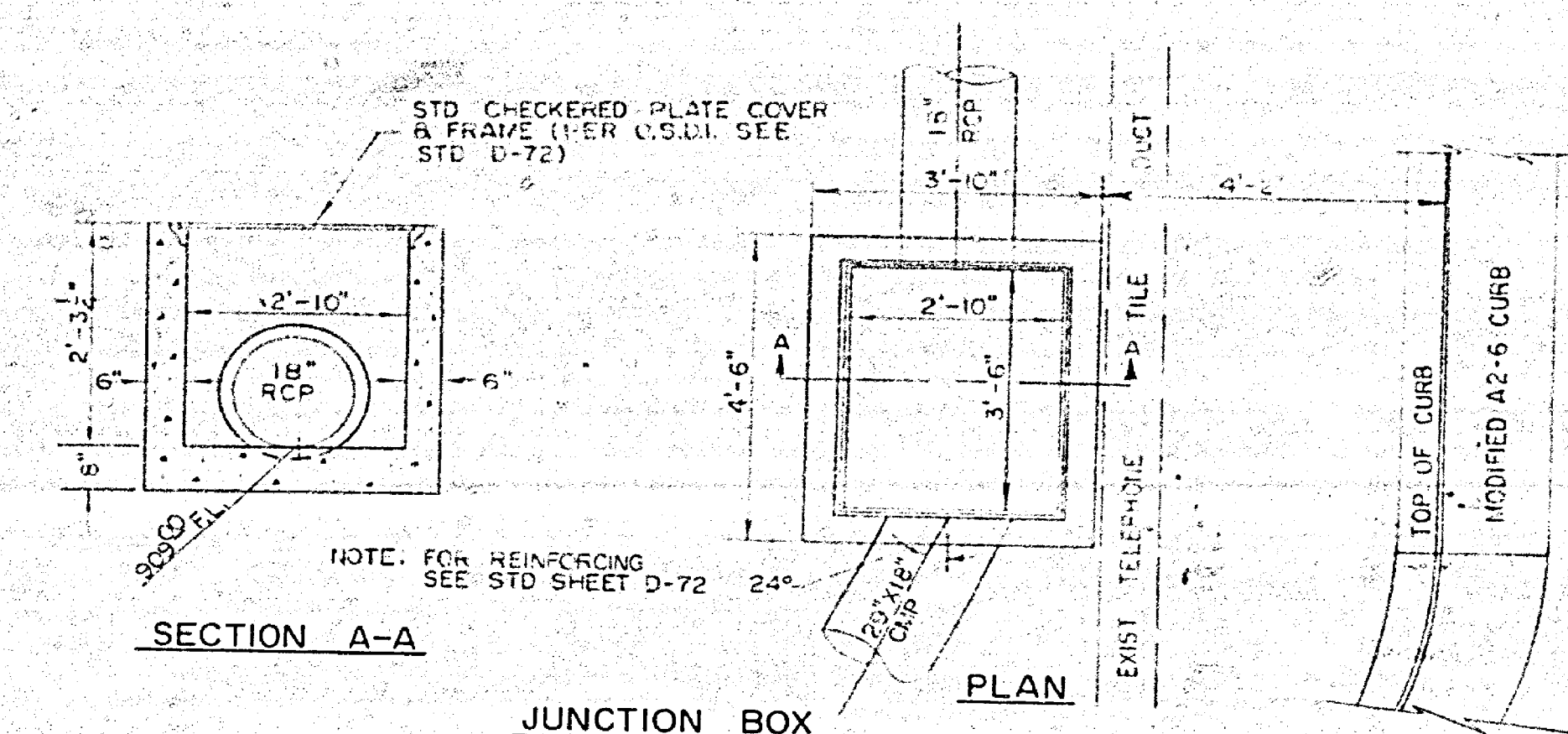
SCALE 1\"/>



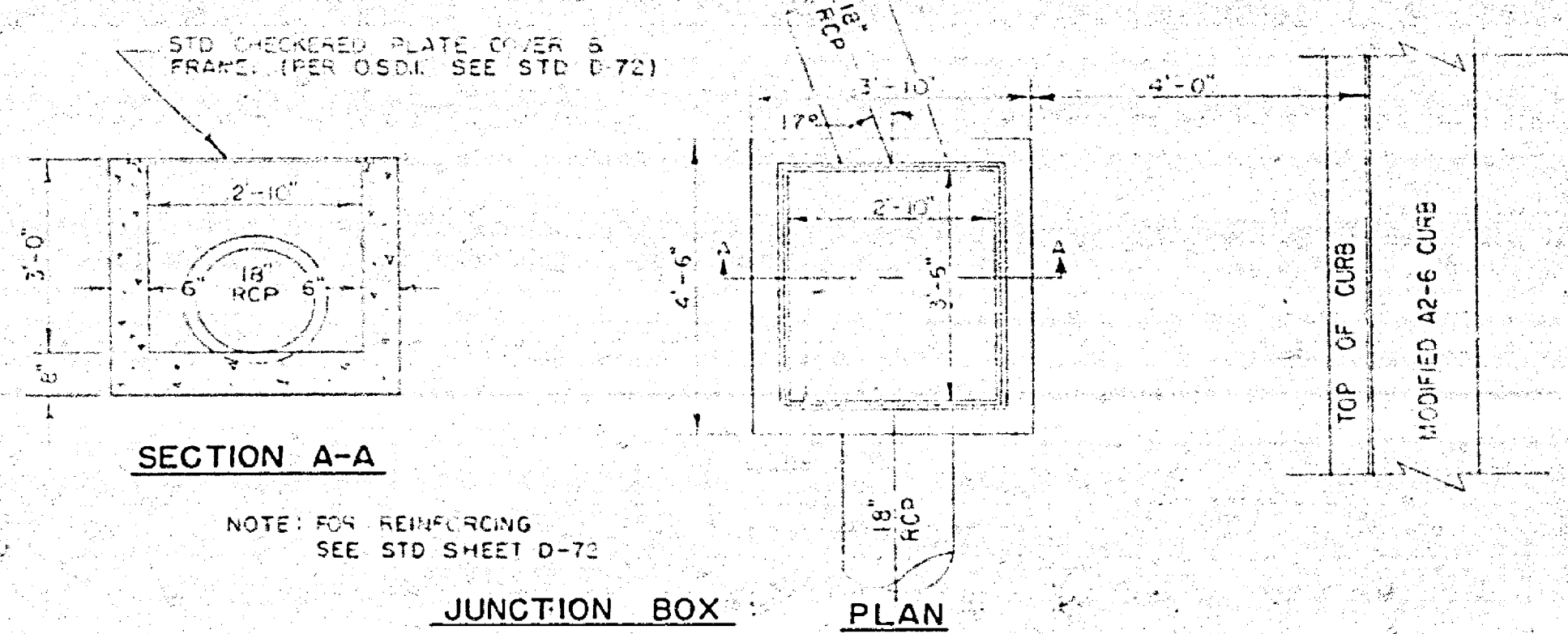
CANAL CROSSING DETAILS
 STA 35+45 IOWA AVENUE

R-2047 SHT. 8

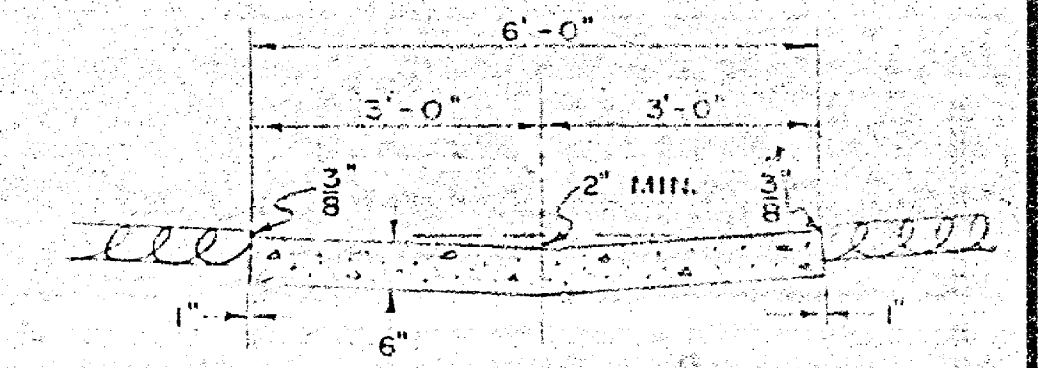
A. C. Smith
 ROAD COMMISSIONER R.C.E. NO. 4388
 DISTRICT ENGINEER DIST. 08
 APPROVED September 5, 1967
 H. H. Joyner
 ASST. CITY & COUNTY PROJECTS ENGINEER R.C.E. NO. 7477



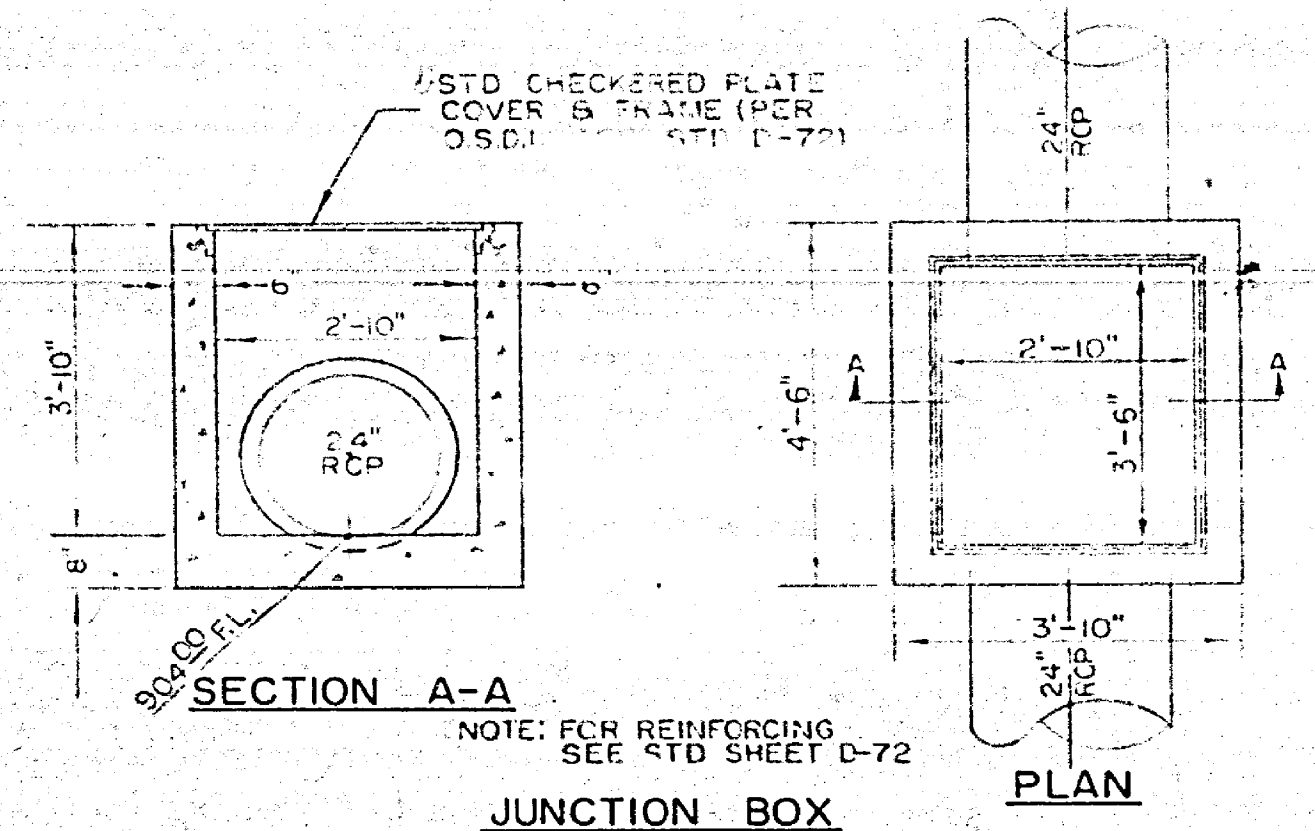
SECTION A-A
 JUNCTION BOX
 STA 9+19.27 RT. CENTER
 SCALE 1" = 2'



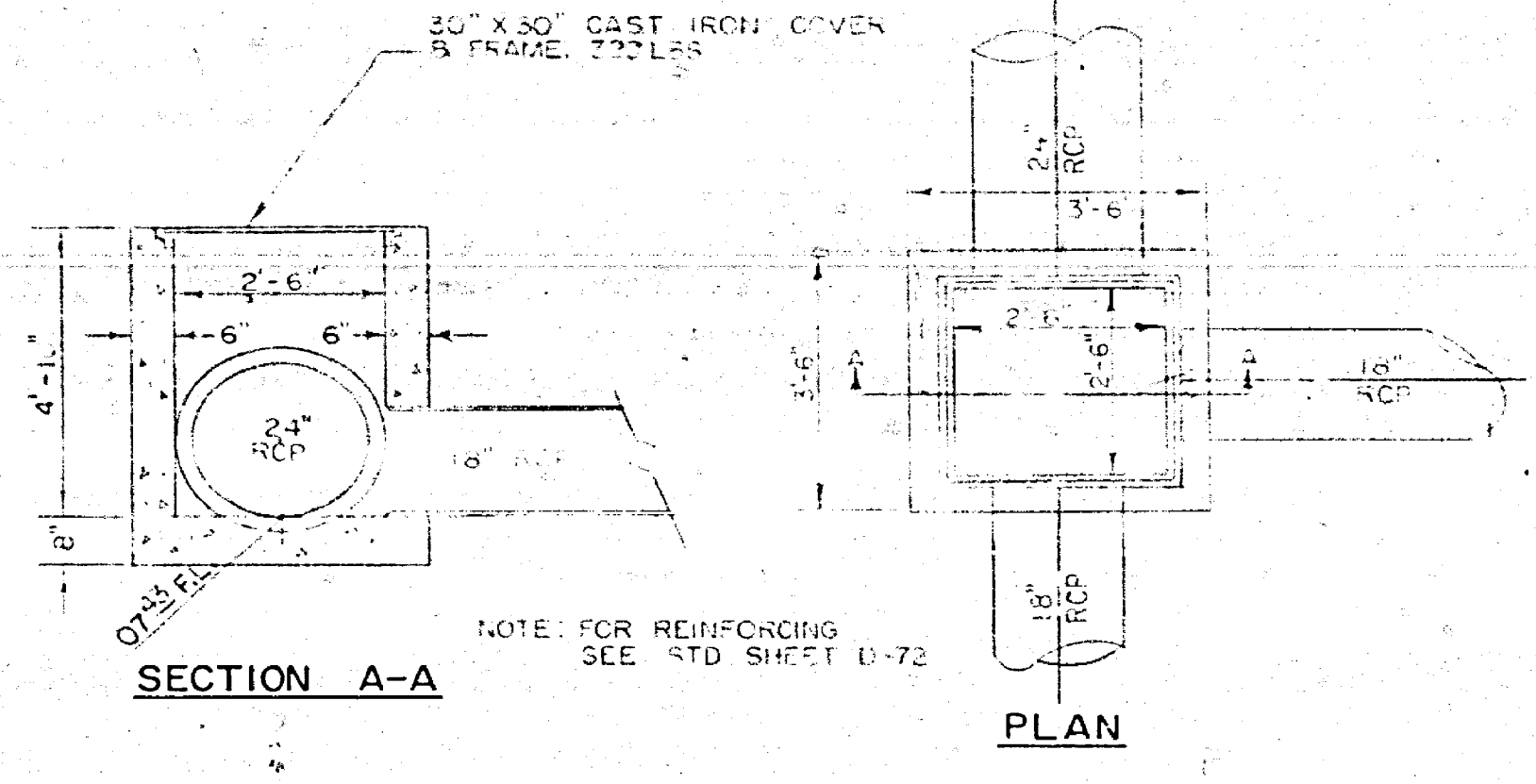
SECTION A-A
 JUNCTION BOX
 STA 8+65 RT. CENTER
 SCALE 1" = 2'



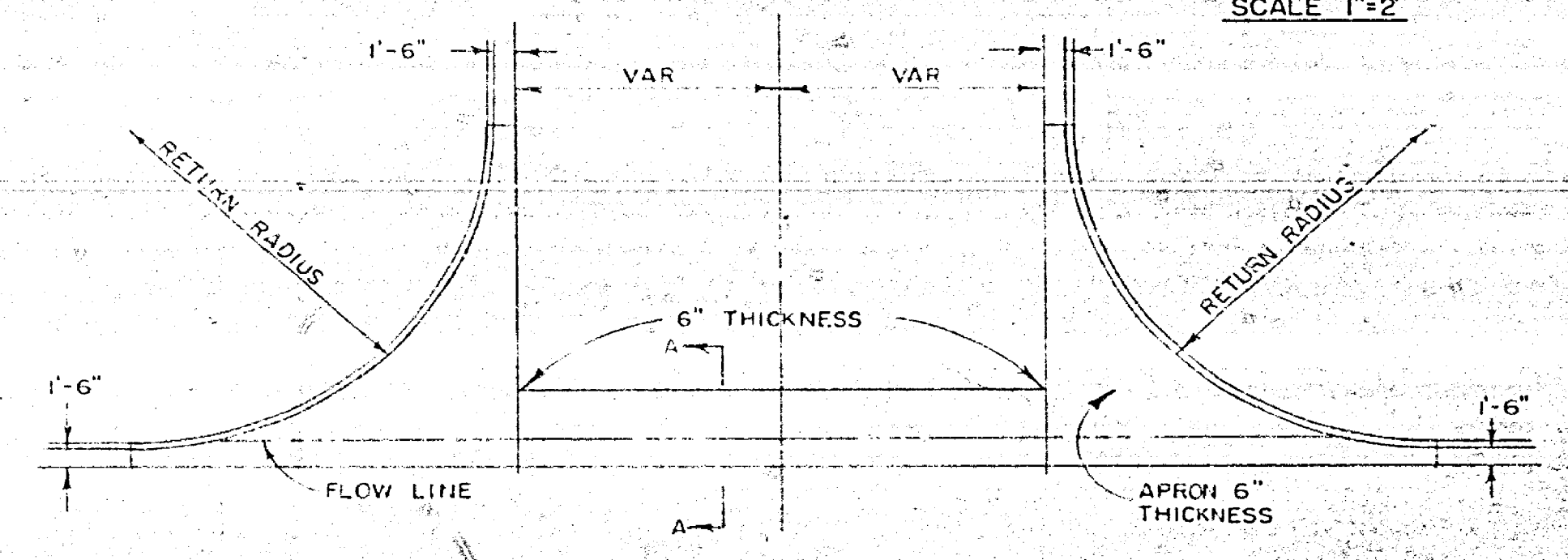
SECTION A-A
 SCALE 1" = 2'



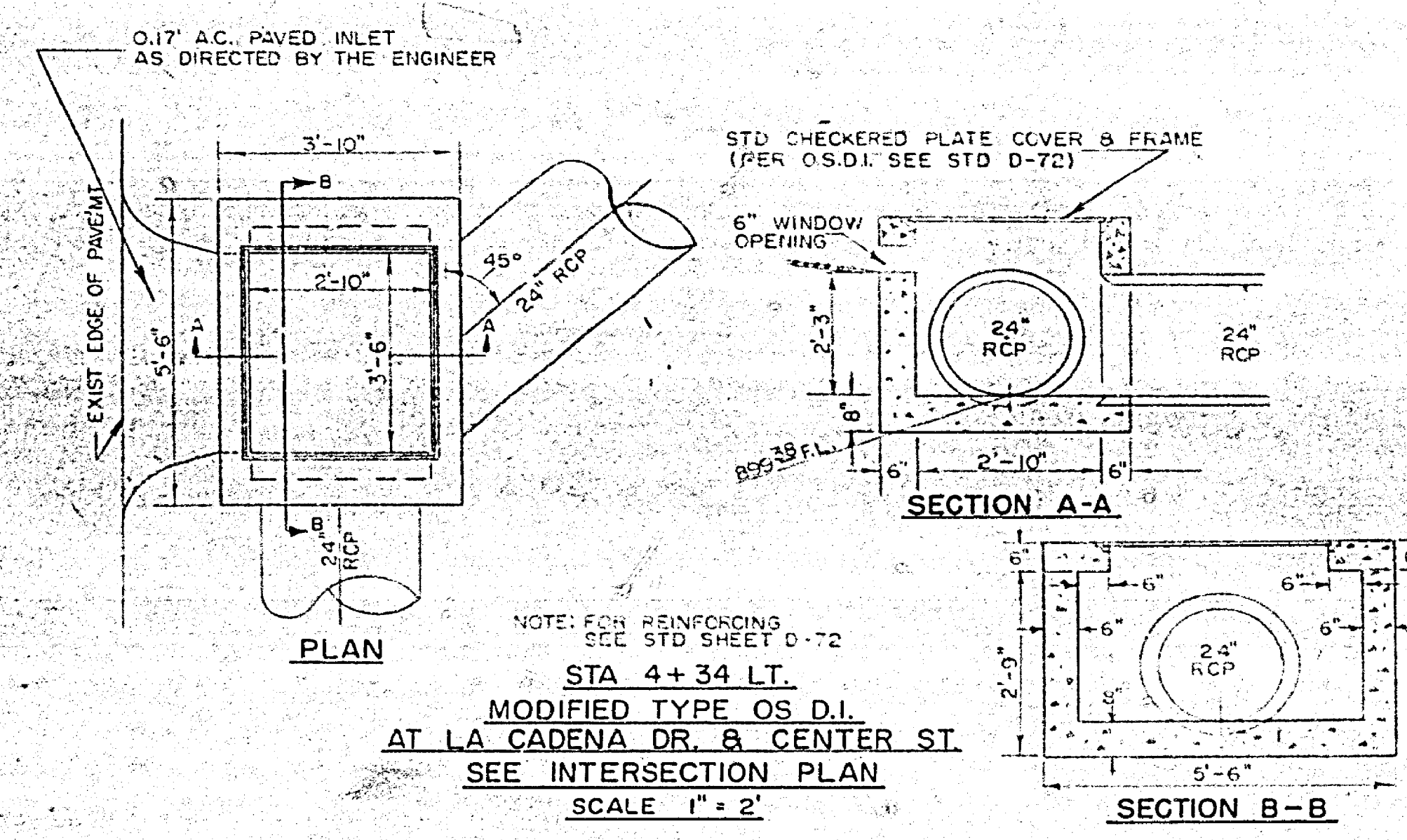
SECTION A-A
 JUNCTION BOX
 STA 6+70 LT. CENTER
 SCALE 1" = 2'



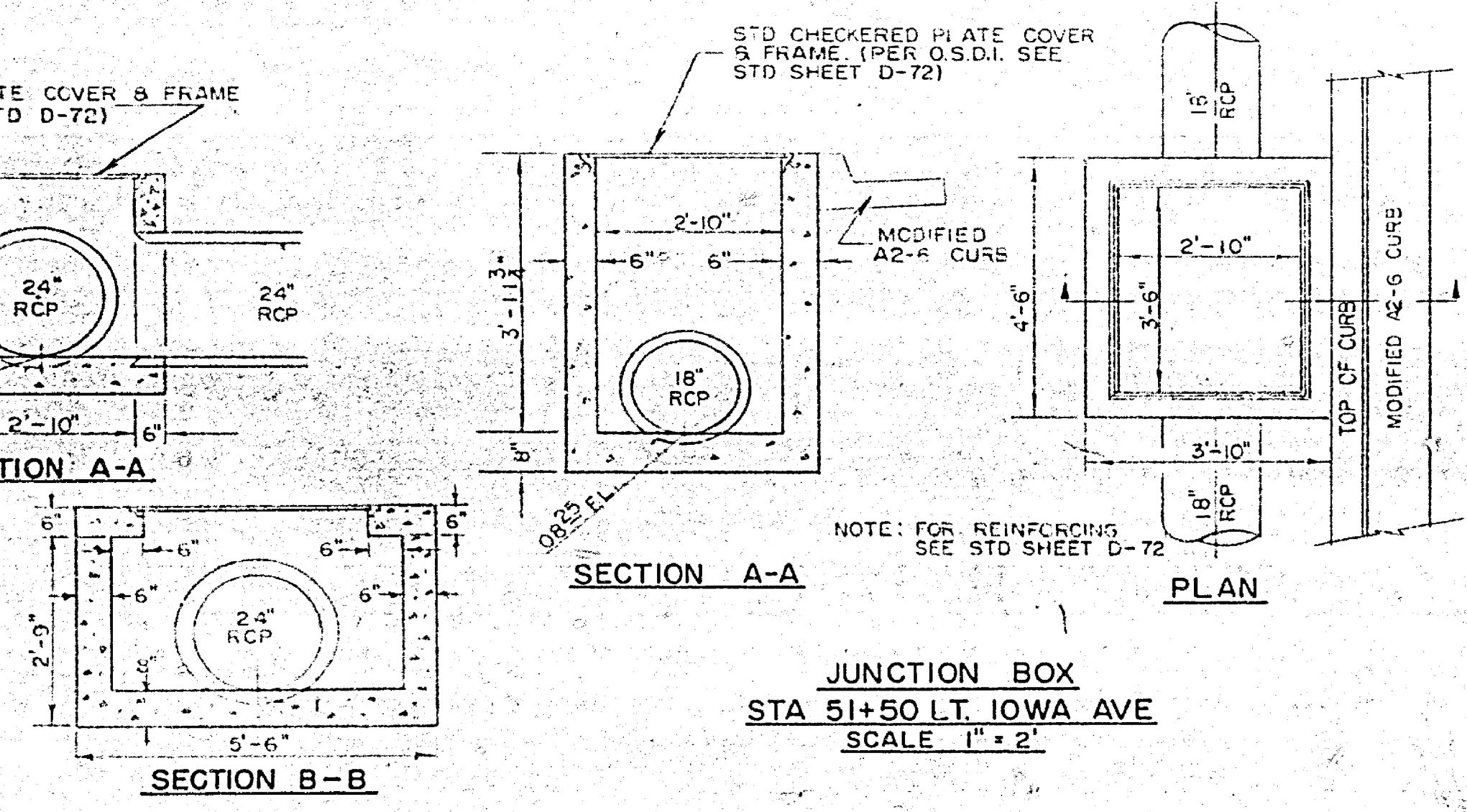
SECTION A-A
 JUNCTION BOX
 STA 50+10 LT. IOWA AVE
 SCALE 1" = 2'



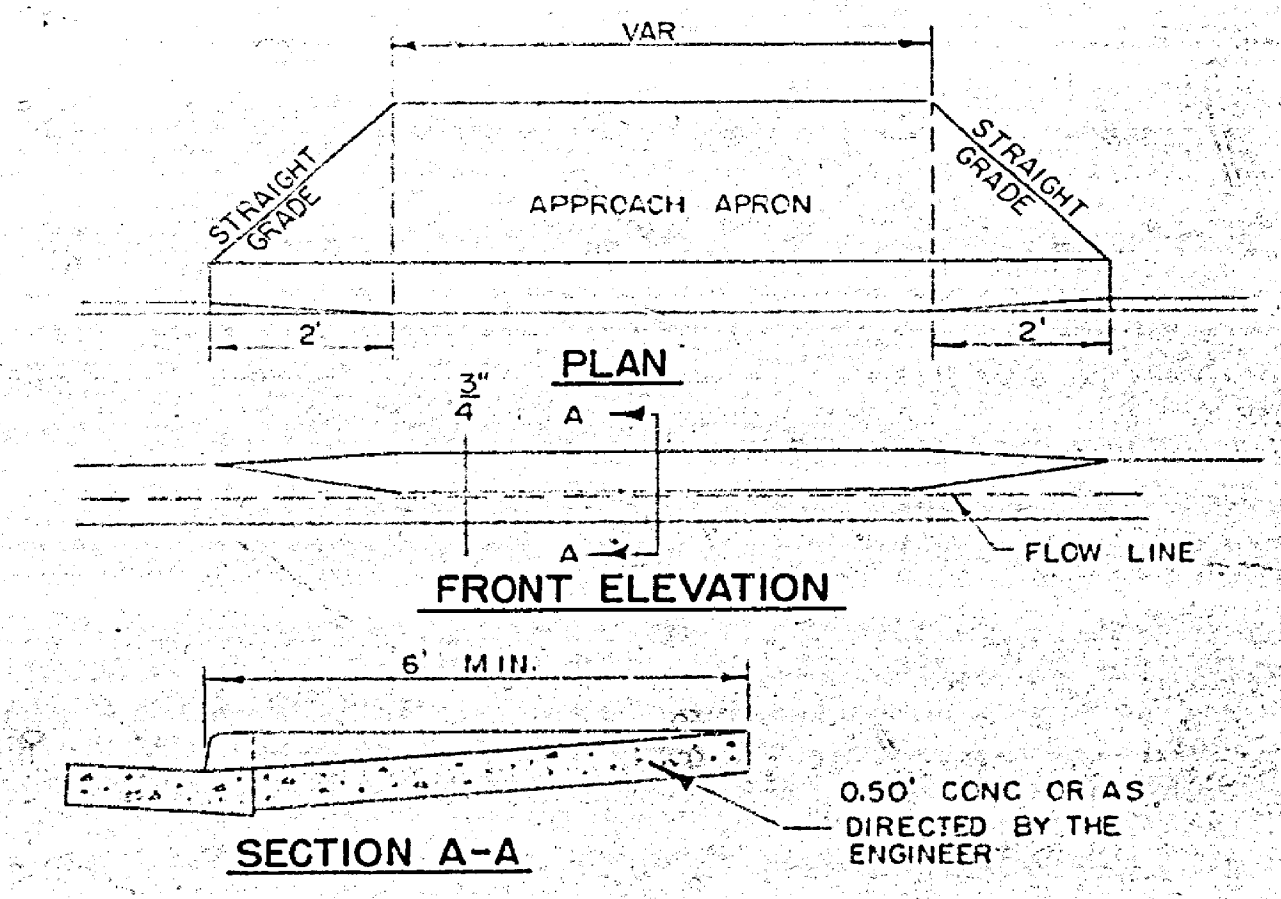
CROSS GUTTER DETAIL
 SCALE 1" = 10'



SECTION A-A
 JUNCTION BOX
 STA 4+34 LT.
 MODIFIED TYPE OS D.I.
 AT LA CADENA DR. & CENTER ST.
 SEE INTERSECTION PLAN
 SCALE 1" = 2'



SECTION A-A
 JUNCTION BOX
 STA 51+50 LT. IOWA AVE
 SCALE 1" = 2'



DRIVEWAY APPROACH DETAIL
 SCALE 1" = 2'

MISCELLANEOUS CONSTRUCTION & DRAINAGE STRUCTURE DETAILS

