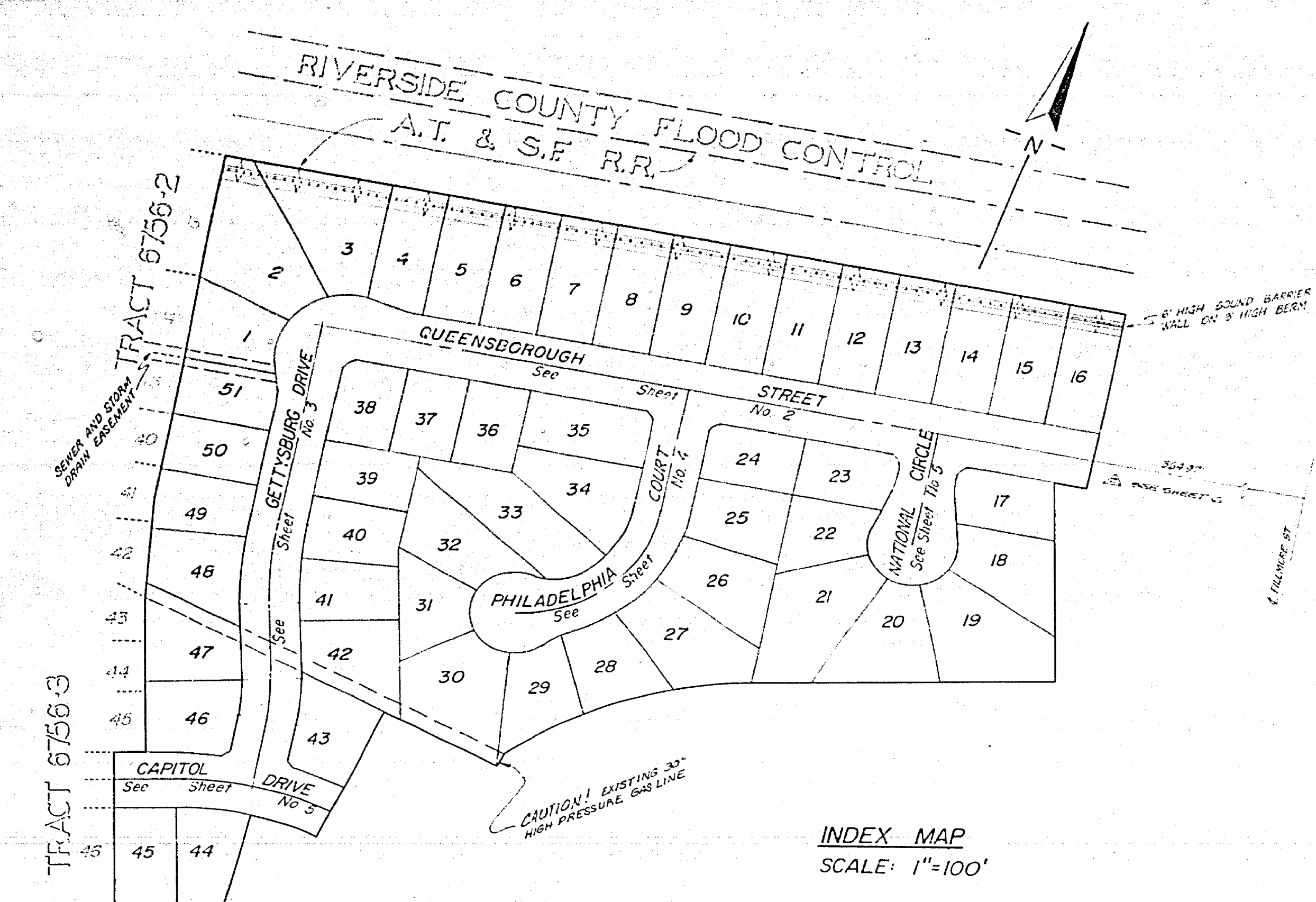
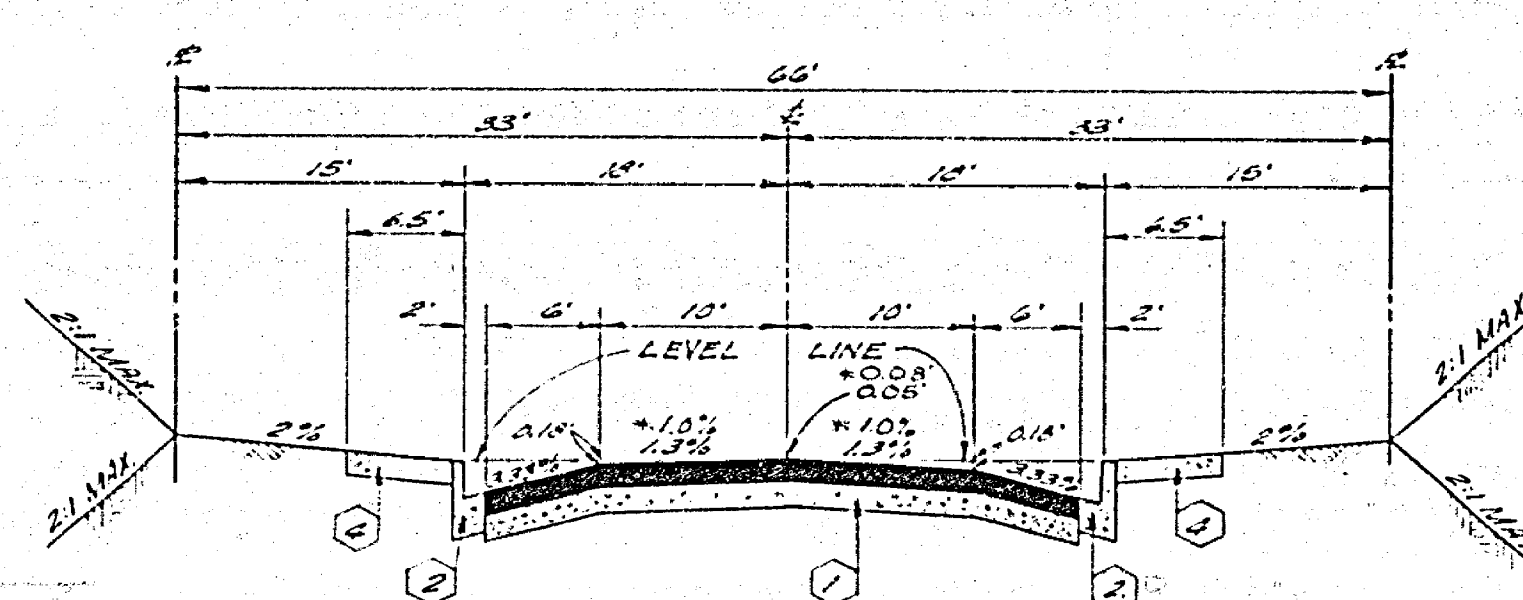


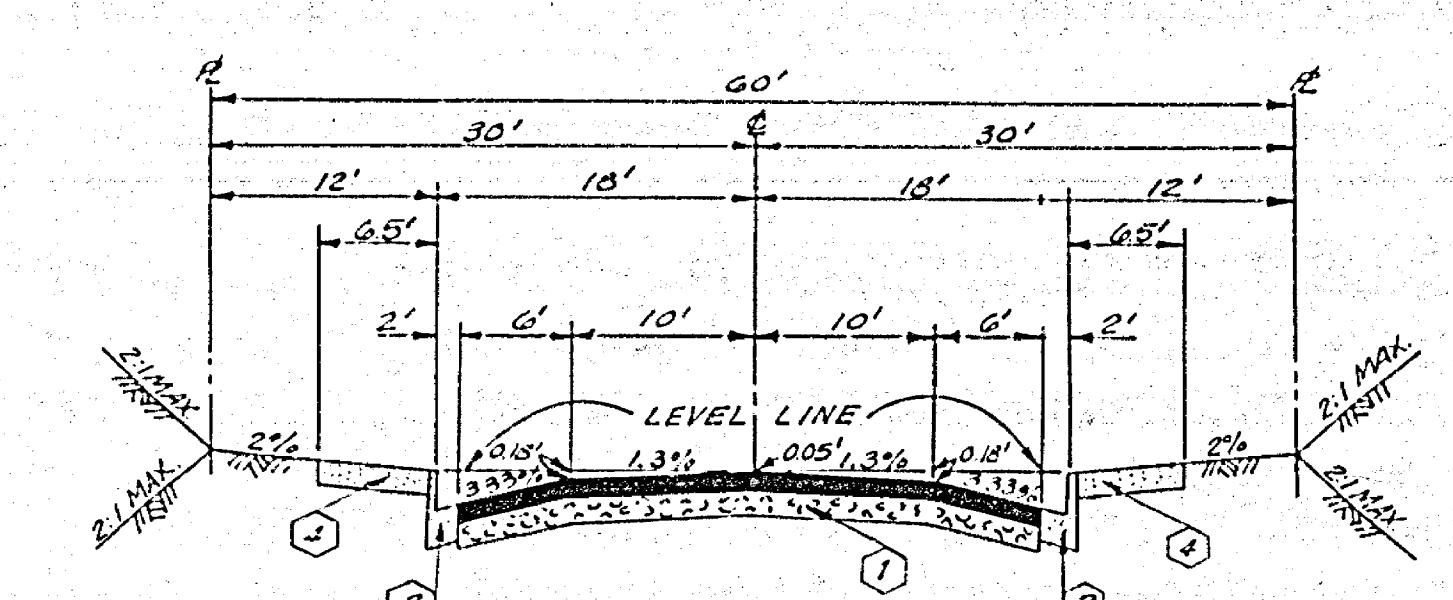
RIVERSIDE COUNTY FLOOD CONTROL
A.T. & S.F. R.R.



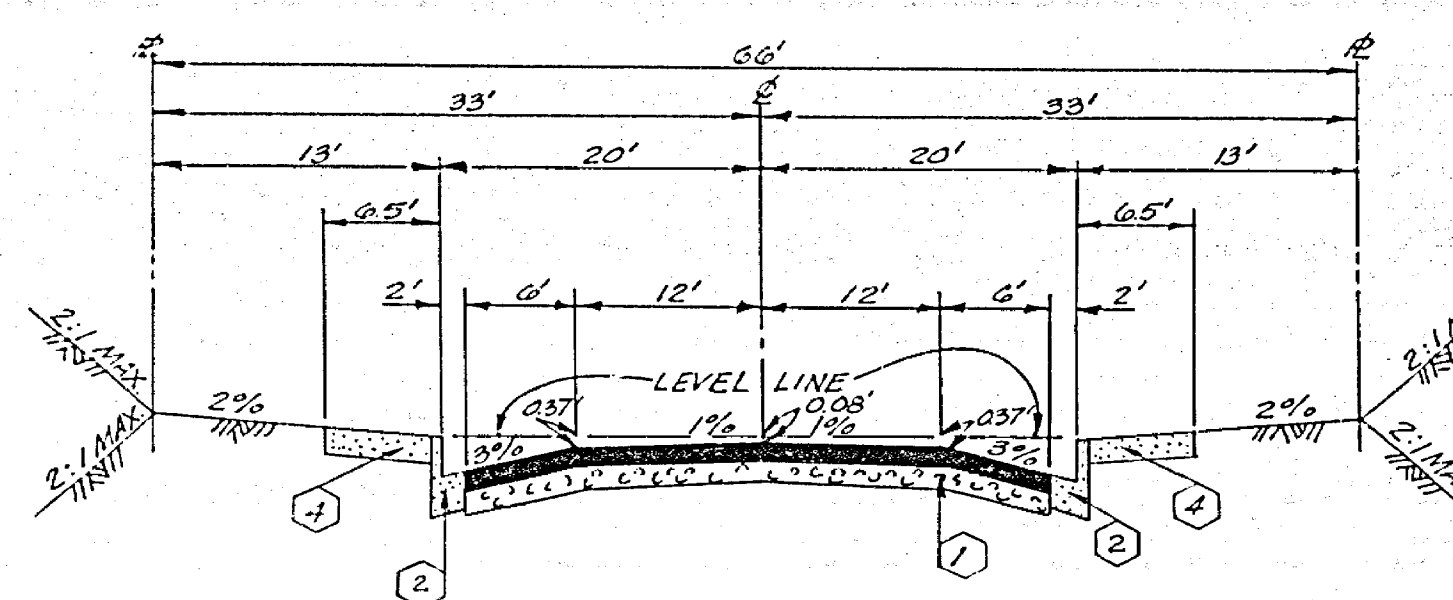
INDEX MAP
SCALE: 1"=100'



TYPICAL SECTION
GETTYSBURG DR.
SCALE: 1"=10'



TYPICAL SECTION
PHILADELPHIA COURT
SCALE: 1"=10'



TYPICAL SECTION
QUEENSBOROUGH ST
SCALE: 1"=10'

GENERAL NOTES:

- IT SHALL BE THE RESPONSIBILITY OF THE CONTRACTOR TO CLEAR THE RIGHT OF WAY IN ACCORDANCE WITH THE PROVISIONS OF LAW AS IT AFFECTS EACH UTILITY INCLUDING IRRIGATION LINES, AND APPURTENANCES, AND AT NO COST TO THE CITY.
- CONSTRUCTION SHALL BE IN ACCORDANCE WITH THE CITY OF RIVERSIDE, DEPARTMENT OF PUBLIC WORKS, STANDARD DRAWINGS AND SPECIFICATIONS FOR PUBLIC WORKS CONSTRUCTION, 1976 EDITION.
- PRIME COAT, SEAL COAT, AND PAINT BINDER ARE REQUIRED.
- CURB AND GUTTER SHALL BE STAKED WITH 3.0 FOOT OFF-SETS AT 25.0 FOOT INTERVALS.
- NOTICE TO CONTRACTOR: THE EXISTENCE AND LOCATION OF ANY UNDERGROUND UTILITY PIPES OR STRUCTURES SHOWN ON THESE PLANS WERE OBTAINED BY A SEARCH OF THE AVAILABLE RECORDS. TO THE BEST OF OUR KNOWLEDGE THERE ARE NO EXISTING UTILITIES EXCEPT AS SHOWN ON THESE PLANS. THE CONTRACTOR IS REQUIRED TO TAKE PRECAUTIONARY MEASURES TO PROTECT THE UTILITY LINES SHOWN AND ANY OTHER LINES NOT OF RECORD OR NOT SHOWN ON THESE PLANS.
- TRAFFIC CONTROL SIGNS SHALL BE IN PLACE PRIOR TO OPENING THE STREETS TO TRAFFIC.
- DRIVEWAY APPROACHES SHALL BE CONSTRUCTED PER CITY OF RIVERSIDE STANDARD DRAWING NO. 302. EXACT SIZE AND LOCATION TO BE DETERMINED AT TIME OF CONSTRUCTION AS APPROVED BY THE CITY TRAFFIC ENGINEER.
- THE SURVIDER SHALL ARRANGE FOR A SOIL TEST TO BE MADE BY A SOILS ENGINEER AFTER THE STREETS HAVE BEEN PREPARED TO ROUGH GRADE. DEPTH OF BASE MATERIAL AND A.C. PAVING SHALL BE DETERMINED BY THE CITY OF RIVERSIDE DESIGN STANDARDS AND TEST PROCEDURES.
- SEE "STREET LIGHTING PLAN" FOR QUANTITY AND LOCATION OF REQUIRED STREET LIGHTS.
- 4" x 4" BLOCKOUTS FOR MAIL BOXES REQUIRED IN CURB SIDEWALK.
- TRIM EDGE OF EXISTING PAVEMENT WHERE NEW PAVEMENT JOINS TO A SMOOTH, STRAIGHT LINE. CONSTRUCT MATCH-UP PAVING AS SHOWN ON PLAN AND OVERLAY AS DIRECTED IN THE FIELD TO PRODUCE A SMOOTH SECTION.
- THE PRIVATE ENGINEER SIGNING THESE PLANS IS RESPONSIBLE FOR ASSURING THE ACCURACY AND ACCEPTABILITY OF THE WORK HEREON. IN THE EVENT OF DISCREPANCIES ARISING DURING CONSTRUCTION, THE PRIVATE ENGINEER SIGNING THESE PLANS SHALL BE RESPONSIBLE FOR DETERMINING AN ACCEPTABLE SOLUTION AND REVISING THE PLANS FOR APPROVAL BY THE CITY.
- ALL FLAGGED ELEVATIONS SHALL BE STAKED IN THE FIELD BY THE PRIVATE ENGINEER.
- THE CONTRACTOR SHALL CONTACT THE PUBLIC SERVICE DEPT (787-7250) TO PICK UP ANY EXISTING BARRICADES THAT ARE BEING REMOVED. THE CITY'S INSPECTOR WILL MAKE THE FINAL DETERMINATION ON WHETHER A BARRICADE CAN BE RELOCATED.

CONSTRUCTION NOTES:

- CONSTRUCT 2 1/2" A.C. OVER 6 1/2" D.G. BASE.
- CONSTRUCT CURB AND GUTTER PER STANDARD DRAWING 200 (TYPE 1) 6" C.F.
- CONSTRUCT CURB AND GUTTER PER STANDARD DRAWING 200 (TYPE 1) 8" C.F.
- CONSTRUCT CURB SIDEWALK PER STANDARD DRAWING 325.
- CONSTRUCT WHEELCHAIR RAMPS PER STANDARD DRAWING 304.
- CONSTRUCT CROSS-GUTTER PER STANDARD DRAWING 220.
- CONSTRUCT BARRICADE PER STANDARD DRAWING 100, PLUS TYPE 1 RED REFLECTOR.
- PLACE 2" x 4" REDWOOD HEADER.

STREET NAME & TRAFFIC SIGN SCHEDULE		
(A)	CAPITOL DR	1100
(B)	GETTYSBURG DR	3500
(C)	QUEENSBOROUGH ST	1100
(D)	PHILADELPHIA CT	3500
(E)	NATIONAL CT	1500
(F)	NATIONAL CT	3500
(G)	W'S (NOT A THROUGH STREET)	25' x 25'

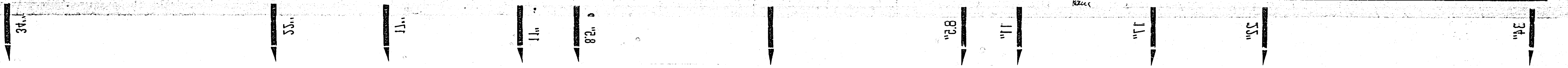
BENCH MARK
U.S.C. & G.S. B.M. N-39 1924 DISC IN HEADWALL ON N.W. CORNER FILLMORE & S.A.R.A. TRACTS P.B. 706/52. ELEV. 726.00'

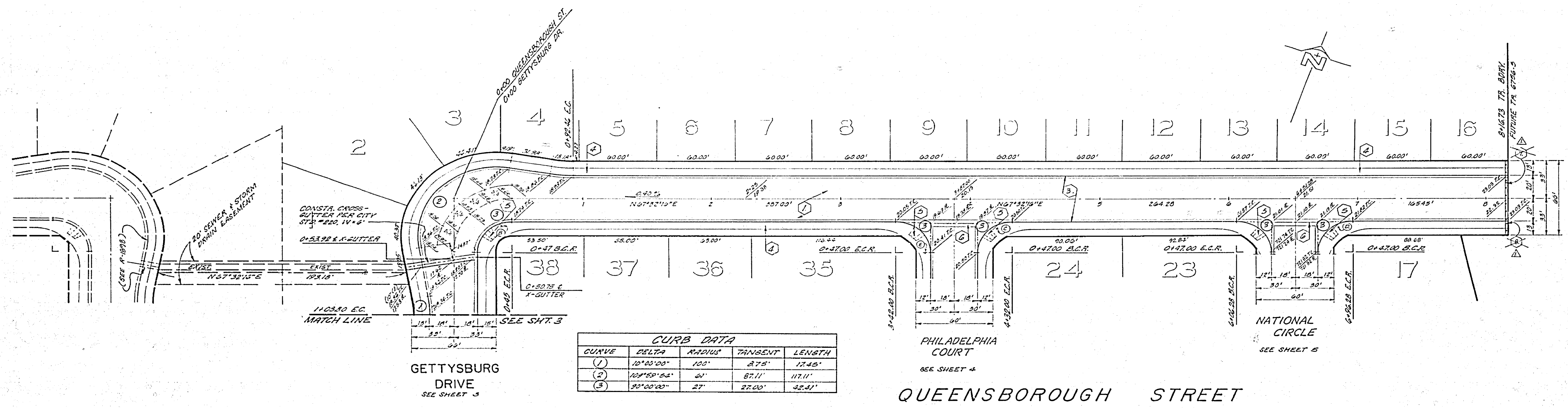
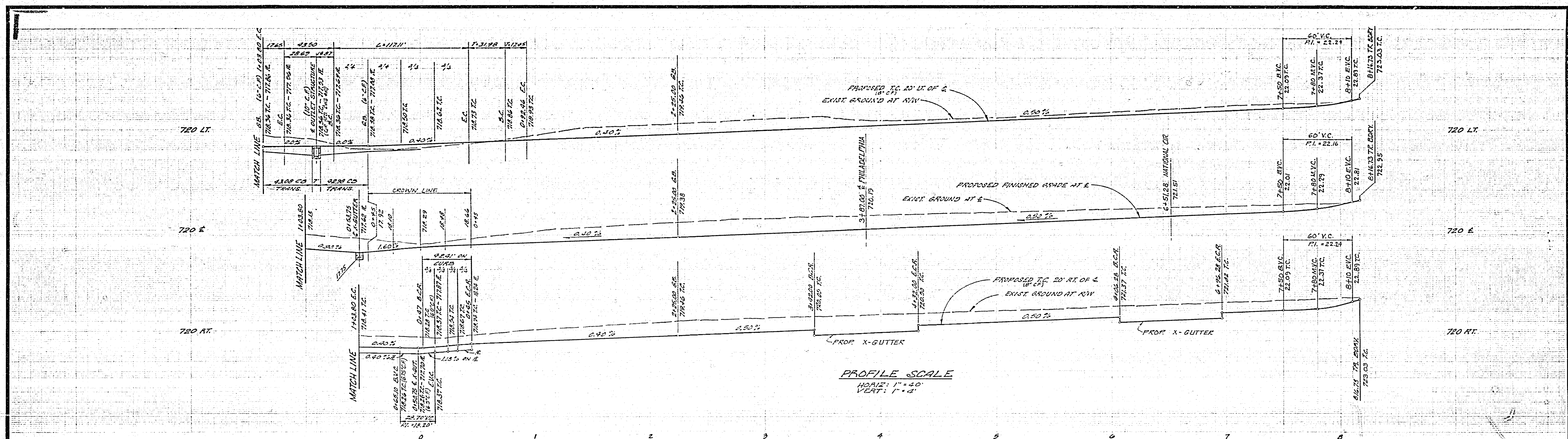
APPROVED FOR
SOUTHERN CALIFORNIA GAS COMPANY
[Signature] DATE 5/29/77

J. F. DAVIDSON ASSOCIATES
CIVIL ENGINEERS - SURVEYORS - PLANNERS
RIVERSIDE, CALIFORNIA
APPROVED BY *[Signature]* DATE 3/28/77
R.E. No. 17550

CITY OF RIVERSIDE, CALIFORNIA
DEPARTMENT OF PUBLIC WORKS
APPROVED BY *[Signature]* DATE 10-31-77
TRAFFIC DIVISION
ASSISTANT CITY ENGINEER
PLANNING

STREET PLAN AND PROFILE
TITLE SHEET
TRACT 6756-4
PROJECT NO. R-2049
SHEET 1 OF 26
FILE NO.





CURB DATA

CURVE	DELTA	RADIUS	TANGENT	LENGTH
(1)	10°00'00"	100'	17.5'	17.45'
(2)	10°50'00"	61'	87.11'	117.11'
(3)	90°00'00"	27'	27.00'	52.41'

BENCH MARK
 U.S.C. & G.S. B.M. K-80 1924 DISC IN HEADWALL
 ON N.W. CORNER FILLMORE & S.F.R.R. TRACKS
 P.D. 700/134 ELEV. 722.010'

APPROVED FOR
 SOUTHERN CALIFORNIA GAS COMPANY
Richard Chudernoff 3/29/77
 DATE

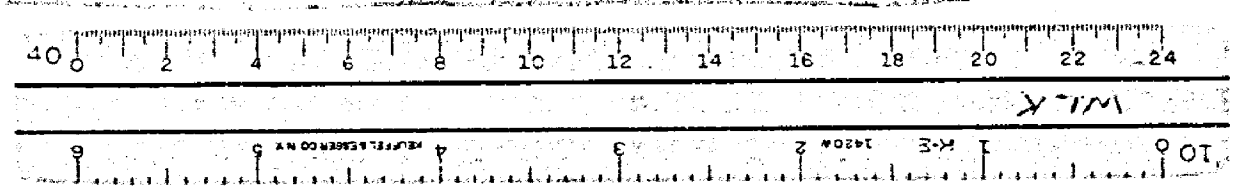
J. F. DAVIDSON ASSOCIATES
 CIVIL ENGINEERS - SURVEYORS - PLANNERS
 RIVERSIDE, CALIFORNIA
 APPROVED BY *J.F. Davidson* DATE 3/29/77
 P.E. No. 11850

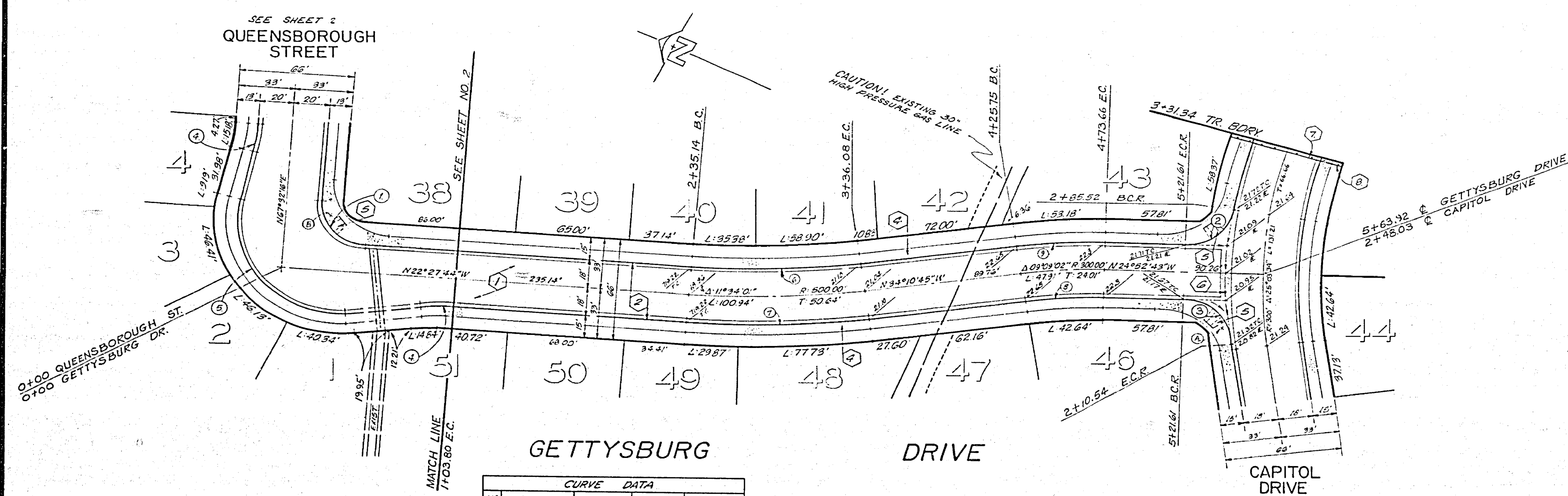
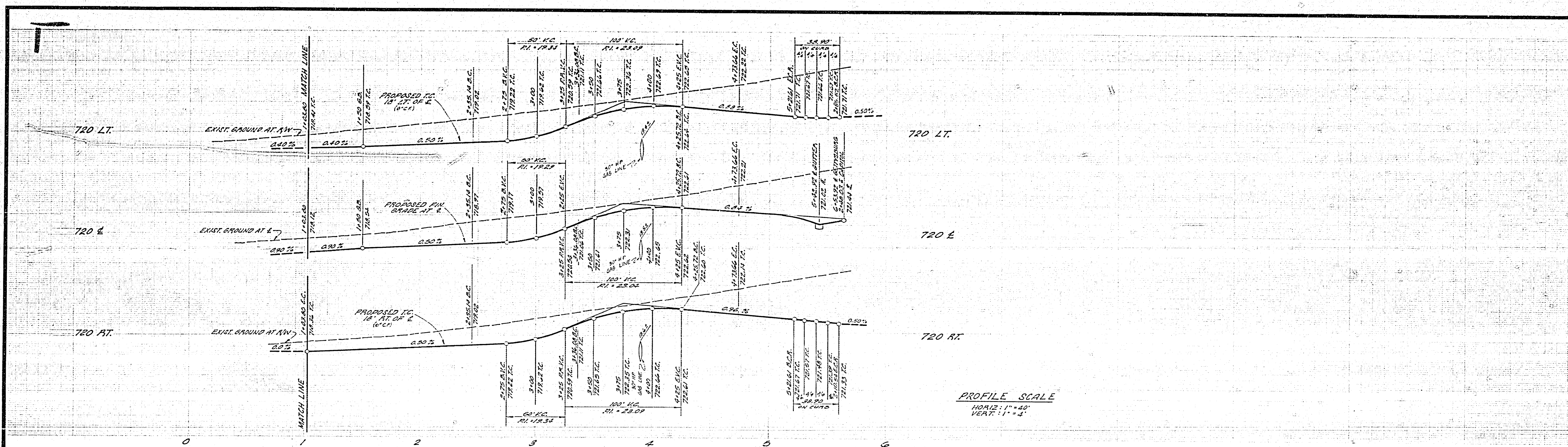
MARK REVISIONS APPR. DATE
 DESIGNED BY DRAWN BY CHECKED BY

CITY OF RIVERSIDE, CALIFORNIA
 DEPARTMENT OF PUBLIC WORKS
 APPROVED BY *[Signature]* DATE 10-3-77
 PRINCIPAL ENGINEER
 TRAFFIC DIVISION
 CHIEF P. W. ENGR.

STREET PLAN AND PROFILE
 TRACT 6756-4
QUEENSBOROUGH ST.
 HORIZ. SCALE: 1" = 40' VERT. SCALE: 1" = 4'

PROJECT NO. **R-2049**
 SHEET **2** OF **56**
 FILE NO.





NO.	Δ	R	L	T
1	90°00'00"	2700'	12.41'	27.00'
2	82°32'55"	2700'	32.90'	23.69'
3	82°32'55"	2700'	32.90'	23.69'
4	10°00'00"	1000'	17.45'	8.75'
5	109°59'54"	6100'	117.11'	87.11'
6	11°34'01"	48200'	97.91'	36.82'
7	11°34'01"	51800'	104.57'	32.47'
8	89°09'02"	18200'	55.04'	22.57'
9	89°09'02"	31800'	50.79'	26.46'

BENCH MARK
 U.S.C. & G.S. B.M. N-35 1964 DISC IN HEADWALL
 ON N.W. CORNER FILLMORE & S.F.R.A. TRACTS
 F.B. 706/34 ELEV. 722.01'

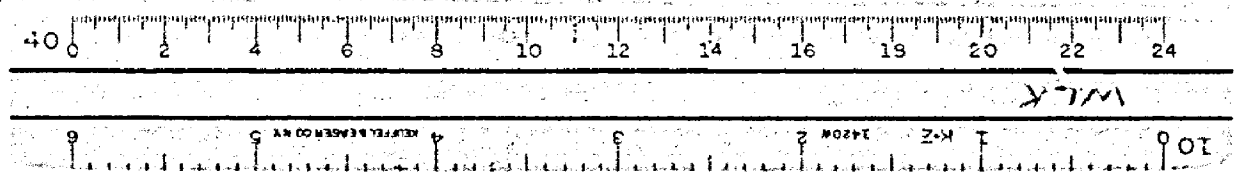
APPROVED FOR
 SOUTHERN CALIFORNIA GAS COMPANY
Samuel C. [Signature] 1/24/77
 DATE

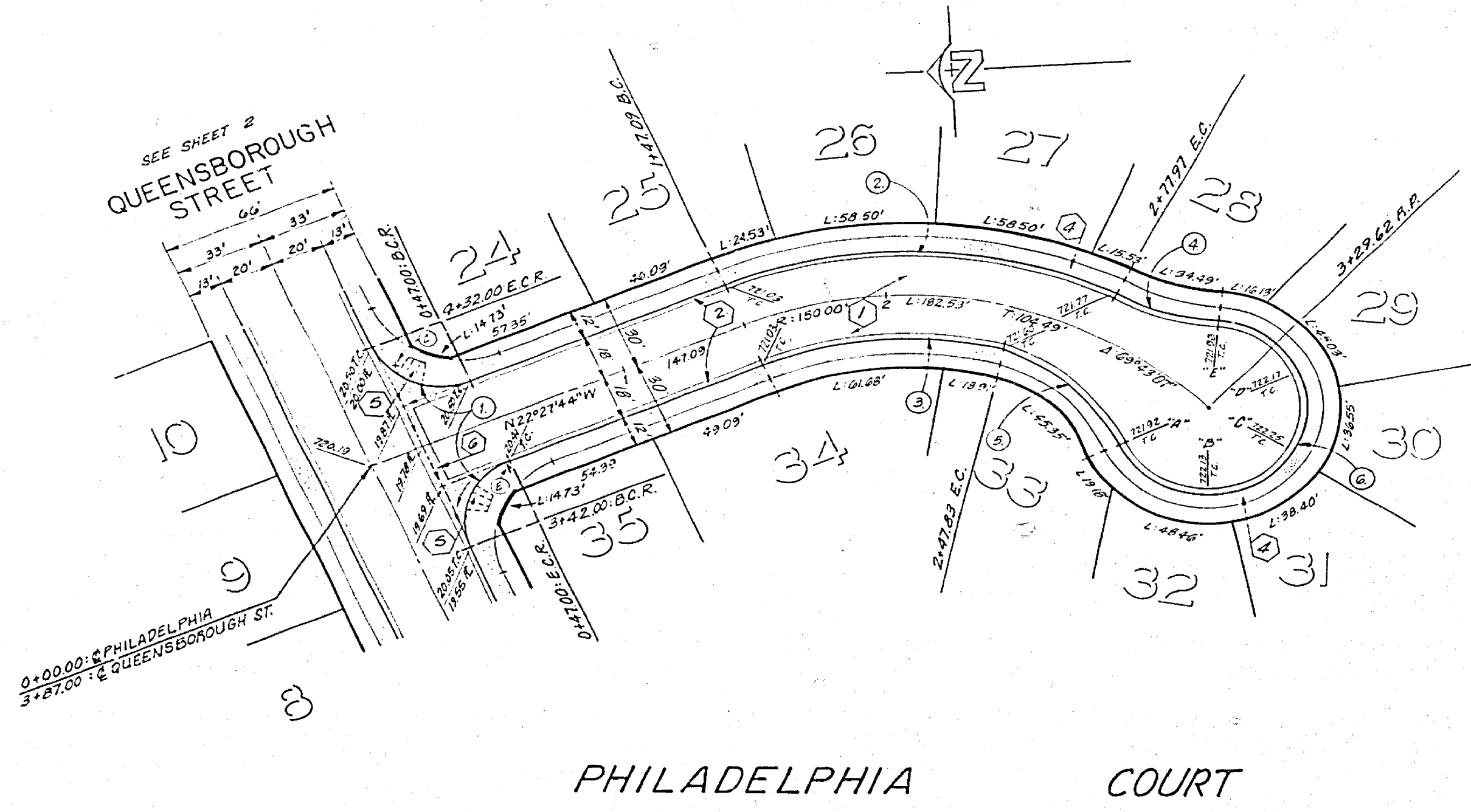
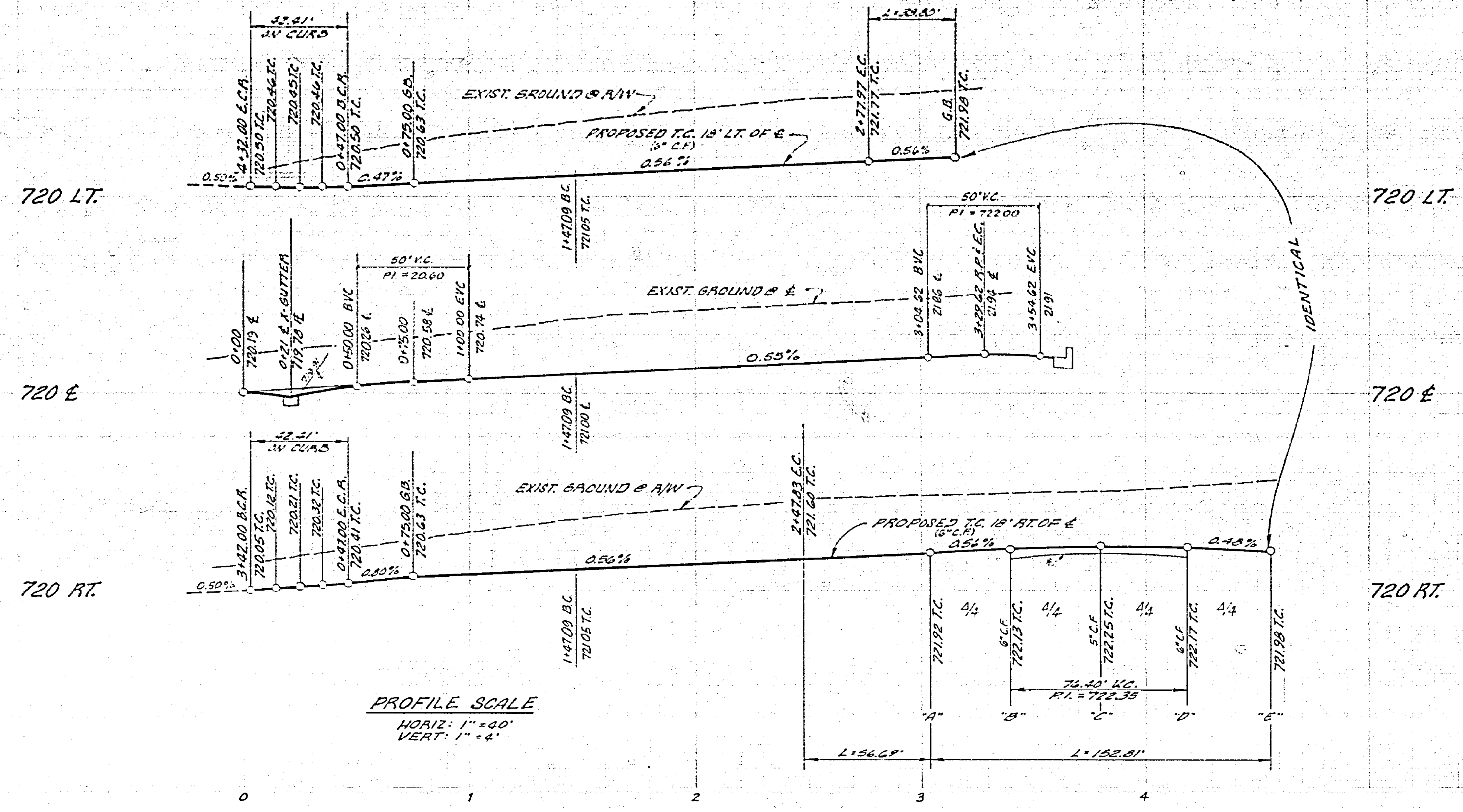
J. F. DAVIDSON ASSOCIATES
 CIVIL ENGINEERS - SURVEYORS - PLANNERS
 RIVERSIDE, CALIFORNIA
 APPROVED BY *[Signature]* DATE 1/24/77
 'R.E. No. 17550

DESIGNED BY _____ DRAWN BY _____ CHECKED BY _____
 MARK REVISIONS
 LAPP. DATE 1/24/77

CITY OF RIVERSIDE, CALIFORNIA
 DEPARTMENT OF PUBLIC WORKS
 APPROVED BY *[Signature]* DATE 1/24/77
 PRINCIPAL ENGINEER
 PARK DEPARTMENT
 TRAFFIC DIVISION
 CHIEF E. W. ENGR. 1/24/77

STREET PLAN AND PROFILE
 TRACT 6756-4
GETTYSBURG DR.
 PROJECT NO. **R-2049**
 SHEET 3 OF 6
 FILE NO. _____
 HORIZ. SCALE: 1" = 40' VERT. SCALE: 1" = 4'



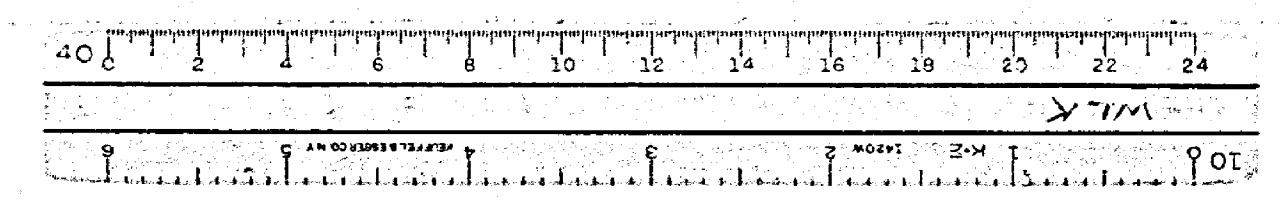


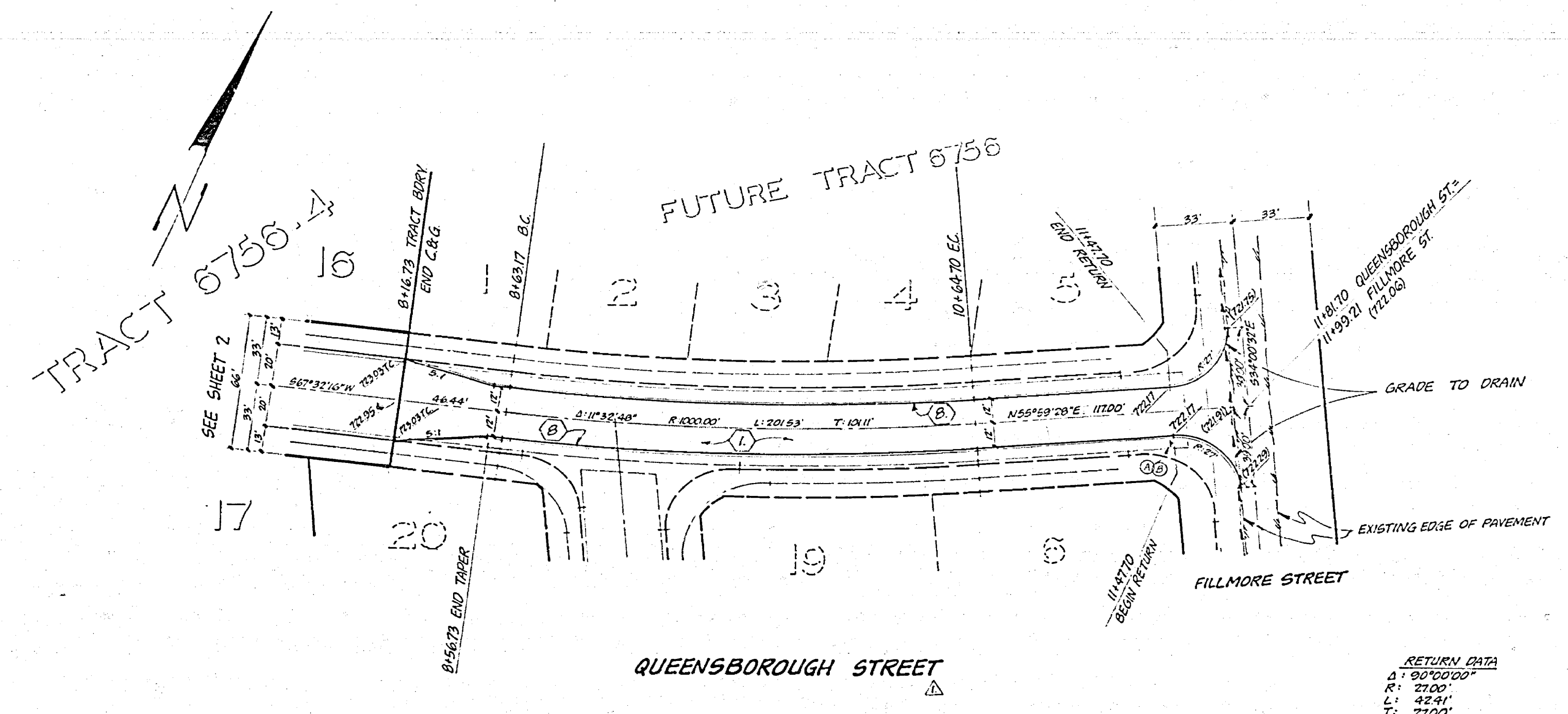
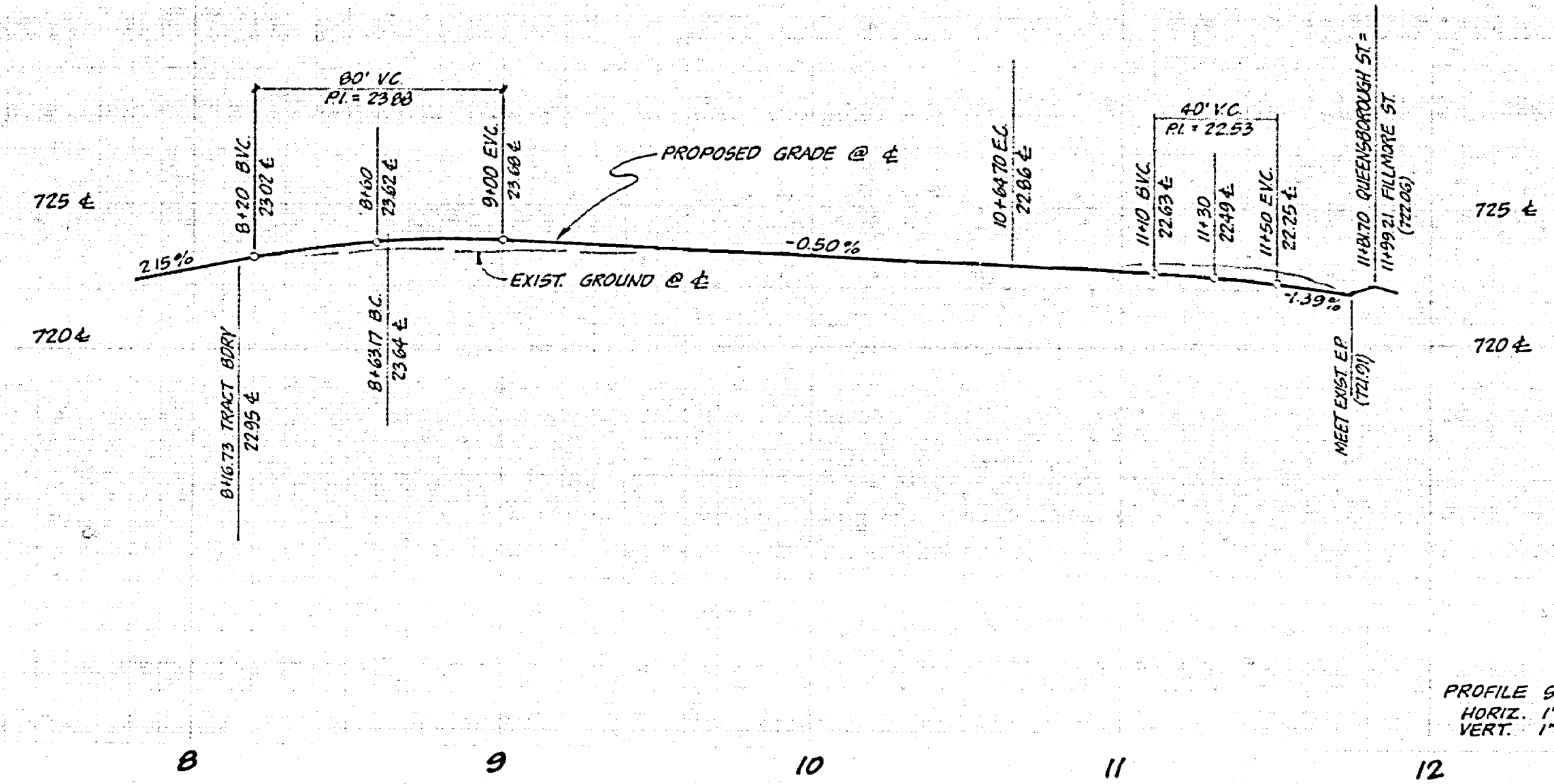
CURVE DATA				
NO.	Δ	R	L	T
1	30°20'00"	27.00'	42.41'	27.00'
2	49°59'32"	168.00'	146.58'	28.33'
3	38°28'49"	192.00'	83.65'	46.01'
4	20°35'12"	108.00'	39.80'	19.61'
5	54°07'51"	60.00'	56.68'	30.66'
6	243°21'19"	36.00'	152.81'	

BENCH MARK
 U.S.C. & G.S. 5.M. K-38 1924 DISC IN HEADWALL
 ON NW CORNER FILLMORE & S.F.R. TRACKS
 P.D. 706/94 ELEV. 782.01'

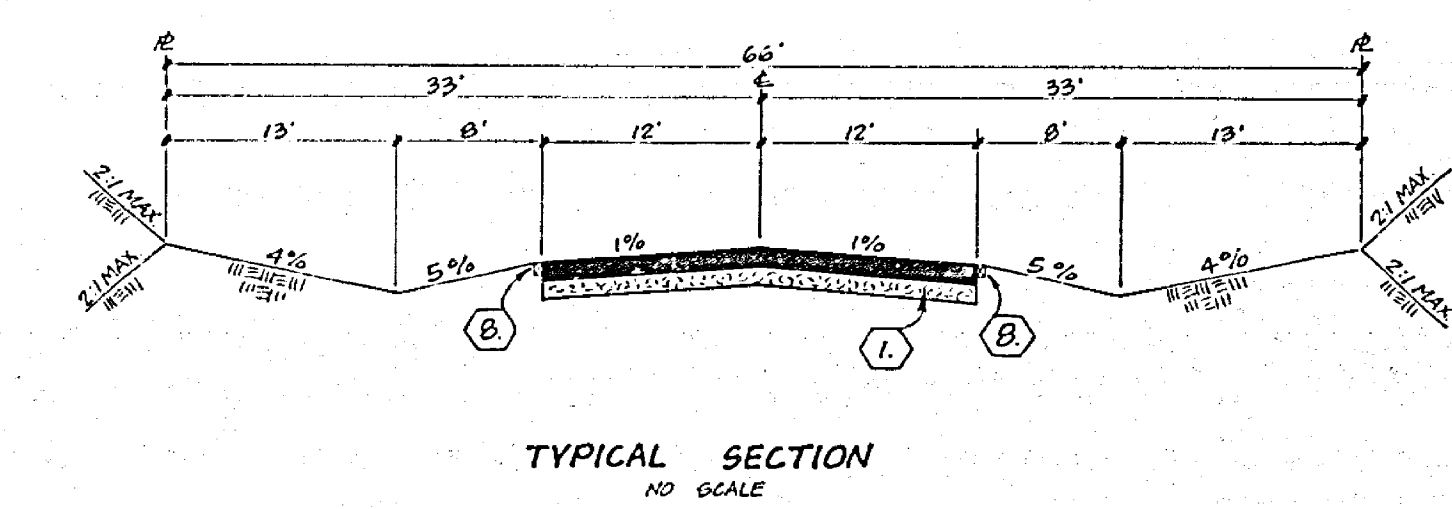
SEE SHEET NO. 1 FOR CONSTRUCTION NOTES.

APPROVED FOR SOUTHERN CALIFORNIA GAS COMPANY	J. F. DAVIDSON ASSOCIATES CIVIL ENGINEERS - SURVEYORS - PLANNERS RIVERSIDE, CALIFORNIA	CITY OF RIVERSIDE, CALIFORNIA DEPARTMENT OF PUBLIC WORKS	STREET PLAN AND PROFILE	PROJECT NO.
APPROVED BY: <i>[Signature]</i> DATE: 3/20/77 R.E. No. 17550	APPROVED BY: <i>[Signature]</i> DATE: 10-31-77 DIRECTOR OF PUBLIC WORKS	TRACT 6756-4 PHILADELPHIA COURT		R-2049
DESIGNED BY: _____ DRAWN BY: _____ CHECKED BY: _____	DATE: 10-31-77	HORIZ. SCALE: 1" = 40'	VERT. SCALE: 1" = 4'	SHEET 4 OF 56 FILE NO.





STREET NAME & TRAFFIC SIGN SCHEDULE	
A	QUEENSBOROUGH ST 11500
B	FILLMORE ST 3500
C	R1 (STOP SIGN) 30" OCTAGON



BENCHMARK
U.S.C. & G.S. B.M. K-38 1923 DISC IN HEADWALL ON
NW CORNER FILLMORE ST & SPRA TRAILS 78 70434
ELEV. 722.00

J. F. DAVIDSON ASSOCIATES
CIVIL ENGINEERS - SURVEYORS - PLANNERS
RIVERSIDE, CALIFORNIA

APPROVED BY: *J. F. Davidson* DATE: 8/30/78
R.E. No. 17550

W.O. 5008-3 FOR Murray Div Co. F.B.

REVISIONS	DATE	BY
Added Sheet 0 of 6 Queensborough St	8/30/78	J.F.D.

DESIGNED BY: CH. DRAWN BY: CH. CHECKED BY: W.F.

CITY OF RIVERSIDE, CALIFORNIA
DEPARTMENT OF PUBLIC WORKS

APPROVED BY: *[Signature]* DATE: 9/6/78
PRINCIPAL ENGINEER: J.F.D.
TRAFFIC DIVISION: VII
CHIEF P.W. ENGR: J.F.D.

PROJECT NO. R-2049
STREET PLAN AND PROFILE
TRACT 6756-4
QUEENSBOROUGH STREET
SHEET 6 OF 6
HORIZ. SCALE: 1" = 40' VERT. SCALE: 1" = 4' FILE NO. 5557

