

NOTE: SUPER ELEVATION TO BE APPLIED TO TYLER AVE. FUTURE IMPROVEMENTS THROUGH WESTERN SIDE OF 70' R/W CURVE.

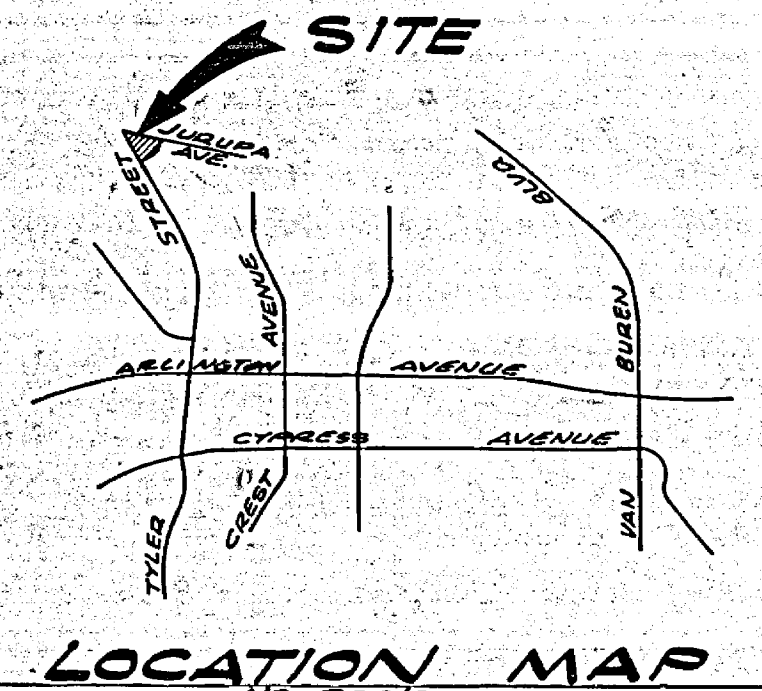
TYPICAL SECTION
TYLER STREET & JURUPA AVENUE
No. 7
NO SCALE

- CONSTRUCTION NOTES:**
- 1 Construct PCC Curb and Gutter per Riverside City Standard No. 200 (6" C.F.) TYPE I
 - 2 Construct 6" PCC Curb Sidewalk per Riverside City Standard No. 202
 - 3 Construct 4" AC Pavement over 14 1/2" DG or 1 1/2" AC over compacted native.
 - 4 Install 11" x 57" OVER TYPE "N" YELLOW (SEE SIGN SCHEDULE BELOW) INSTEAD OF W-51 OVER TYPE "N" RED INDICATED IN STD. DWG. #150
 - 5 Construct Wheelchair Ramp per Riverside City Standard No. 303.
 - 6 Construct Barricade per City Standard No. 180 with type "N" reflector.
 - 7 Place 2" x 4" Redwood Header.
 - 8 Const PCC Curb per Riverside City Standard No. 200 (6" C.F.) TYPE II

- GENERAL NOTES:**
1. Construction shall be in accordance with the standard specifications for public works construction of the City of Riverside Standard Drawings.
 2. All flagged elevations shall be staked in the field by the Engineer.
 3. The Contractor shall contact the Public Service Dept. (787-7251) to pick up any exist. std. 180 Barricades that are being removed.
 4. Driveway Approaches shall be located as indicated on plans shall be constructed per City of Riverside Standard No. 304 (4' x 2' x 12").
 5. Curb shall be staked at 25' intervals and 3' offsets.
 6. Traffic Control signs must be placed prior to opening streets to traffic.
 7. It shall be the responsibility of the contractor to clear the right of way in accordance with the provisions of law as it affects each utility, including meter lines and appurtenances and at no cost to the City.
 8. See street lighting plans for number and location of required street lights.
 9. Trim edge of existing pavement where new pavement joins to a smooth, straight line. Construct match up paving as shown on plans to produce a smooth transition.
 10. See landscaping & sprinkler system plans for parkway on Tyler Street and Jurupa Avenue.
 11. THE PRIVATE ENGINEER, SIGNING THESE PLANS IS RESPONSIBLE FOR THE ACCURACY AND ACCEPTABILITY OF THE WORK HEREON. IN THE EVENT OF DISCREPANCIES ARISING DURING CONSTRUCTION, THE PRIVATE ENGINEER SHALL BE RESPONSIBLE FOR DETERMINING AN ACCEPTABLE SOLUTION AND REVISING THE PLANS FOR APPROVAL BY THE CITY.
 12. TRAFFIC SIGNAL CONDUIT AND PULLBOX INSTALLATION SHALL CONFORM TO THE PROVISIONS OF SECTION 65 OF THE STATE STANDARD SPECIFICATIONS, THE STANDARD PLANS AND THE CITY OF RIVERSIDE STD. DWG. NO. 600.
 13. LOCATION FOR CONDUITS & PULLBOXES WILL BE ESTABLISHED IN THE FIELD BY THE TRAFFIC ENGINEER OR HIS REPRESENTATIVE.
 14. PROPOSED ELECTRICAL UNDERGROUND FACILITIES SHOWN ON SHEET 3 TO BE INSTALLED BY CITY OF RIVERSIDE, PUBLIC UTILITIES DEPARTMENT AFTER INSTALLATION OF CURB & GUTTER AND PRIOR TO INSTALLATION OF PAVEMENT. CONTACT 787-7381 FOR COORDINATION.

BENCH MARK:
RM. Nail in East Curb on Tyler Street, on E Gaylord Avenue produced per City of Riverside RB 700/1 Elevation 773.21 (adjusted to GDA datum elev 773.09 in September 1975).

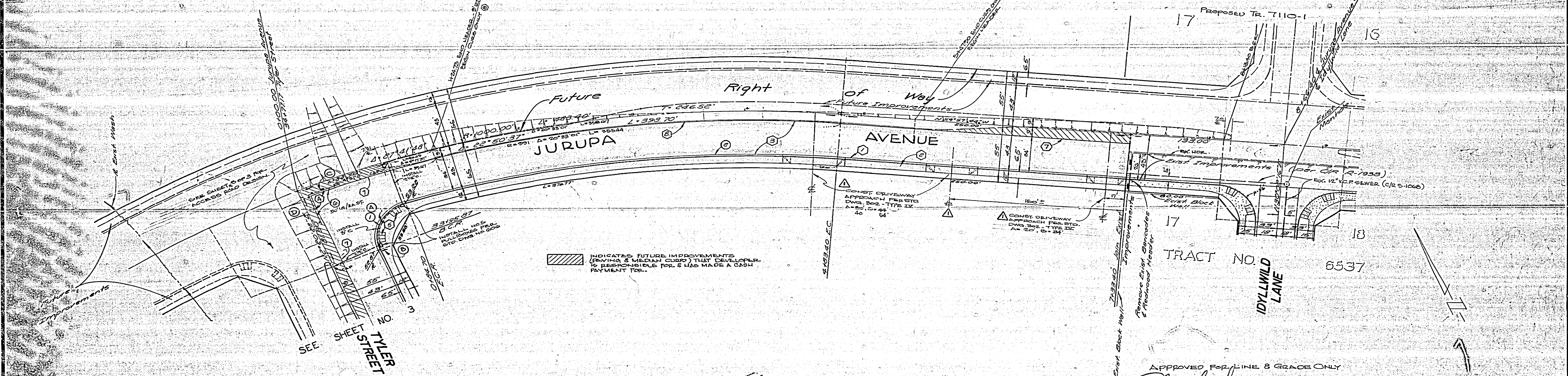
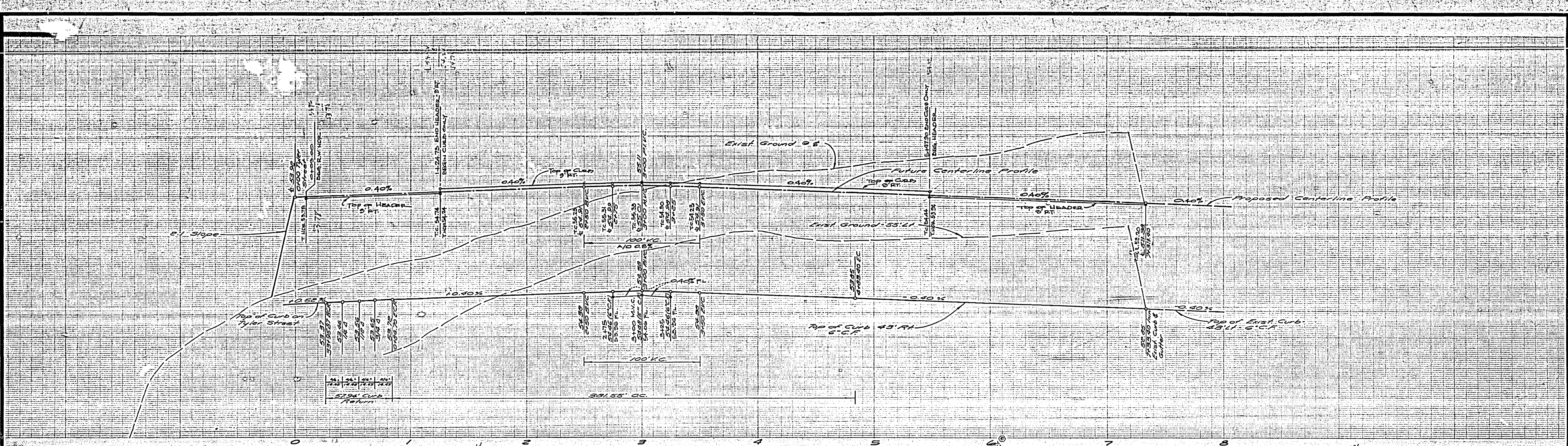
APPROVED FOR LINE & GRADE ONLY
[Signature] 11-7-77
PUBLIC WORKS DIRECTOR DATE



TRAFFIC CONTROL & STREET NAME SCHEDULE

(A) TYLER ST	7100
(B) JURUPA AVE	10200
(C) 30' OCTAGON	
(D) WEST (RT) (RIGHT ARROW) 48" x 24"	
(E) WEST (LT) (LEFT ARROW) 48" x 24"	

PUBLIC UTILITIES DEPT.-ELECT. DIV. APPROVED BY <i>[Signature]</i> FOR CHIEF UTILITY ENGINEER DATE 2-2-78	ALBERT A. WEBB ASSOCIATES CIVIL ENGINEERS RIVERSIDE, CALIFORNIA APPROVED BY <i>[Signature]</i> DATE 3/4/77 R.E. No. 2876	CITY OF RIVERSIDE, CALIFORNIA PUBLIC WORKS DEPARTMENT APPROVED BY <i>[Signature]</i> PRINCIPAL ENGINEER DATE 11/7/77 TRAFFIC DIVISION CHIEF PUB. WKS. ENGR. PLANNING DEPT.	ACCOUNT NO. DRAWING NUMBER 2. C. R-36-745 STREET INDEX SHEET 1 OF 3 75-146-A
	NOTE: SEE FOR ANDREWS DEV. CO. P.D. 1031 DESIGNED BY <i>[Signature]</i> DRAWN BY <i>[Signature]</i> CHECKED BY <i>[Signature]</i>	DATE 11-7-77 SCALE AS SHOWN	DATE 11-7-77 SCALE AS SHOWN

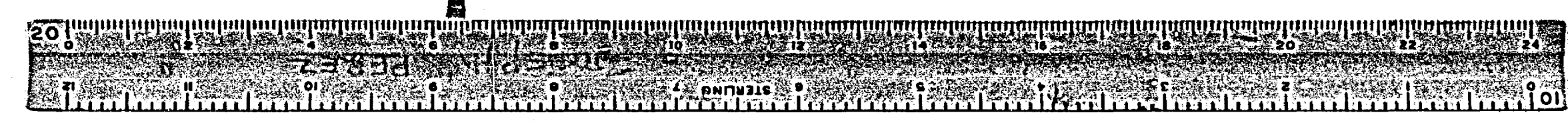


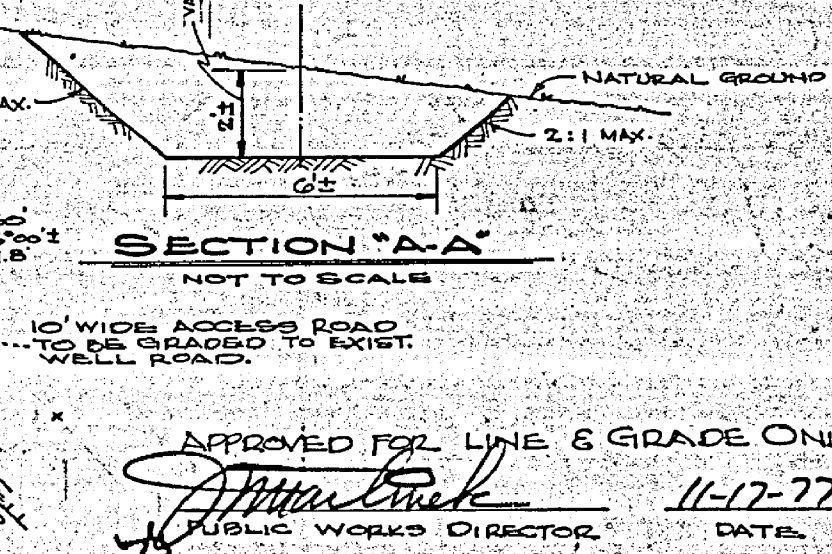
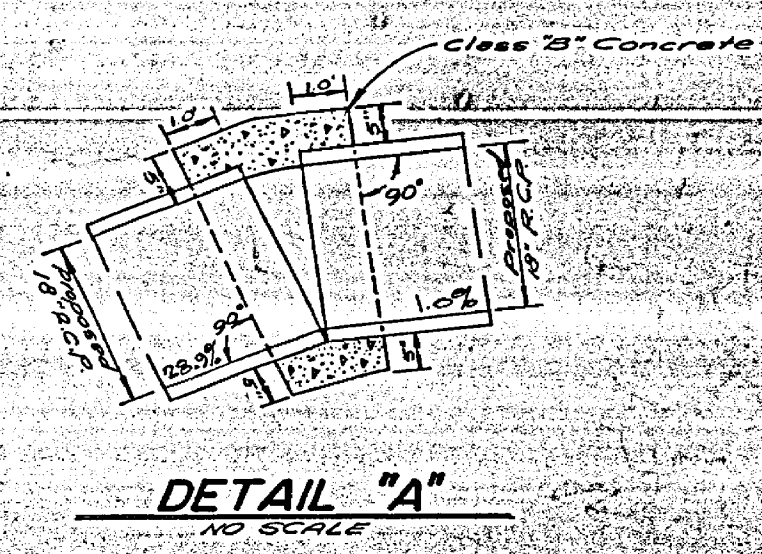
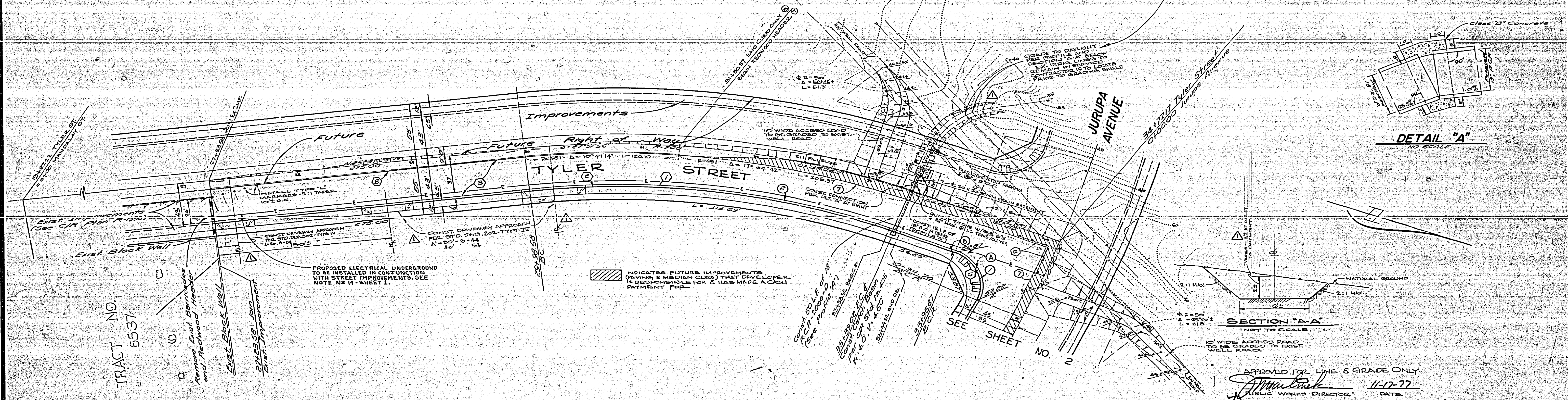
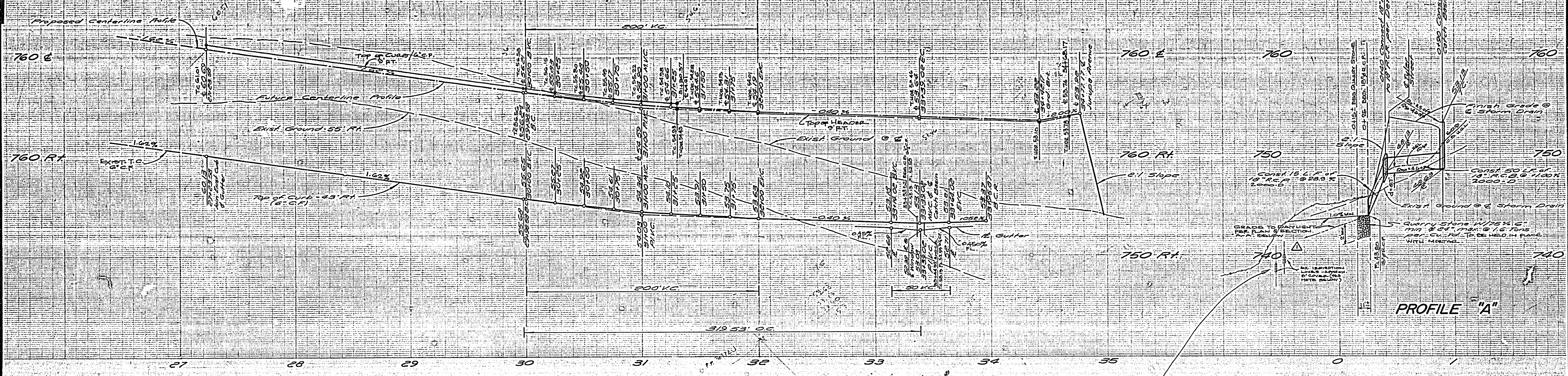
CURB-CURVE DATA				
ST. NO.	Δ	R	L	T
142	94°51'11"	5500	5794'	3810'
15	94°50'37"	95700	38155'	123.38'

BENCH MARK:
 B.M. Nail in East Curb on Tyler Street, on E Gayford Avenue Produced by City of Riverside #2 70811 Elevation 478.31 (Adjusted to C.M. Datum 2104 728.03 in September 1973)

APPROVED FOR LINE & GRADE ONLY
[Signature]
 PUBLIC WORKS DIRECTOR 11-17-77
 DATE

ALBERT A. WEBB ASSOCIATES CIVIL ENGINEERS RIVERSIDE, CALIFORNIA APPROVED BY <i>[Signature]</i> DATE 3/10/77 R.E. No. 0873		CITY OF RIVERSIDE, CALIFORNIA PUBLIC WORKS DEPARTMENT APPROVED BY <i>[Signature]</i> DATE 11/17/77 PUBLIC WORKS DIRECTOR		ACCOUNT No. _____ DRAWING NUMBER R-2051 SHEET 2 OF 3 75-186-a
W.D. 75-186 FOR ANDREWS DEV CO. P.B. 007		DESIGNED BY <i>[Signature]</i> DRAWN BY <i>[Signature]</i> CHECKED BY <i>[Signature]</i>		SCALE: Horiz. 1"=50' Vert. 1"=5' * AS BUILT 4-6-81 BSB





TRACT NO. 5537

CURB CURVE DATA				
No.	Δ	R	L	T
1.	98°51'11"	35.00	57.94'	38.10'
2.	97°57'55"	63.00	319.53'	162.59'

BENCH MARK:
 2x 10x10 in. East Curb on Tyler Street, on E Gaylord Avenue
 Produced, per City of Riverside PB 70611 Elevation
 738.91 (adjusted to CIP Datum Elev. 748.09 in Sept.
 1978)

PUBLIC UTILITIES DEPT-ELECT.DIV.
 APPROVED BY: *[Signature]*
 FOR CHIEF UTILITY ENG., ELECT.
 DATE 2-2-78

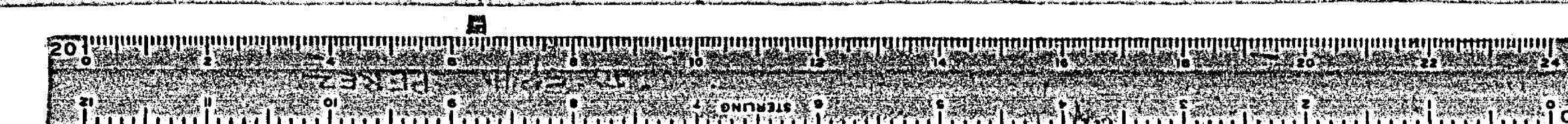
ALBERT A. WEBB ASSOCIATES
 CIVIL ENGINEERS
 RIVERSIDE, CALIFORNIA
 APPROVED BY: *[Signature]* DATE 3/10/77
 R.E. No. 2872
 W.D. 25-486 FOR ANDREWS DEV. CO. PB. 1081

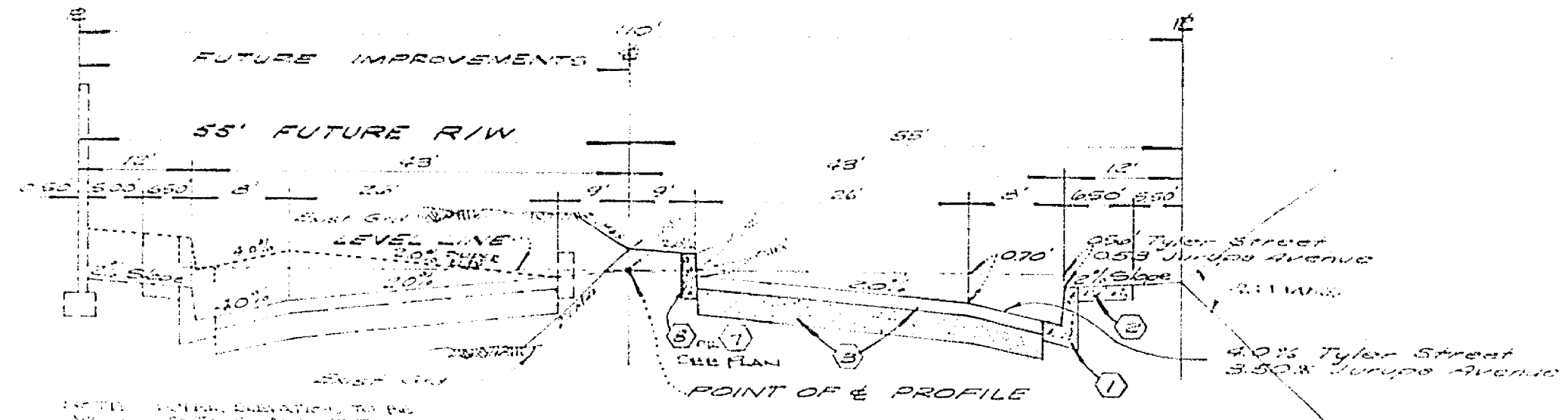
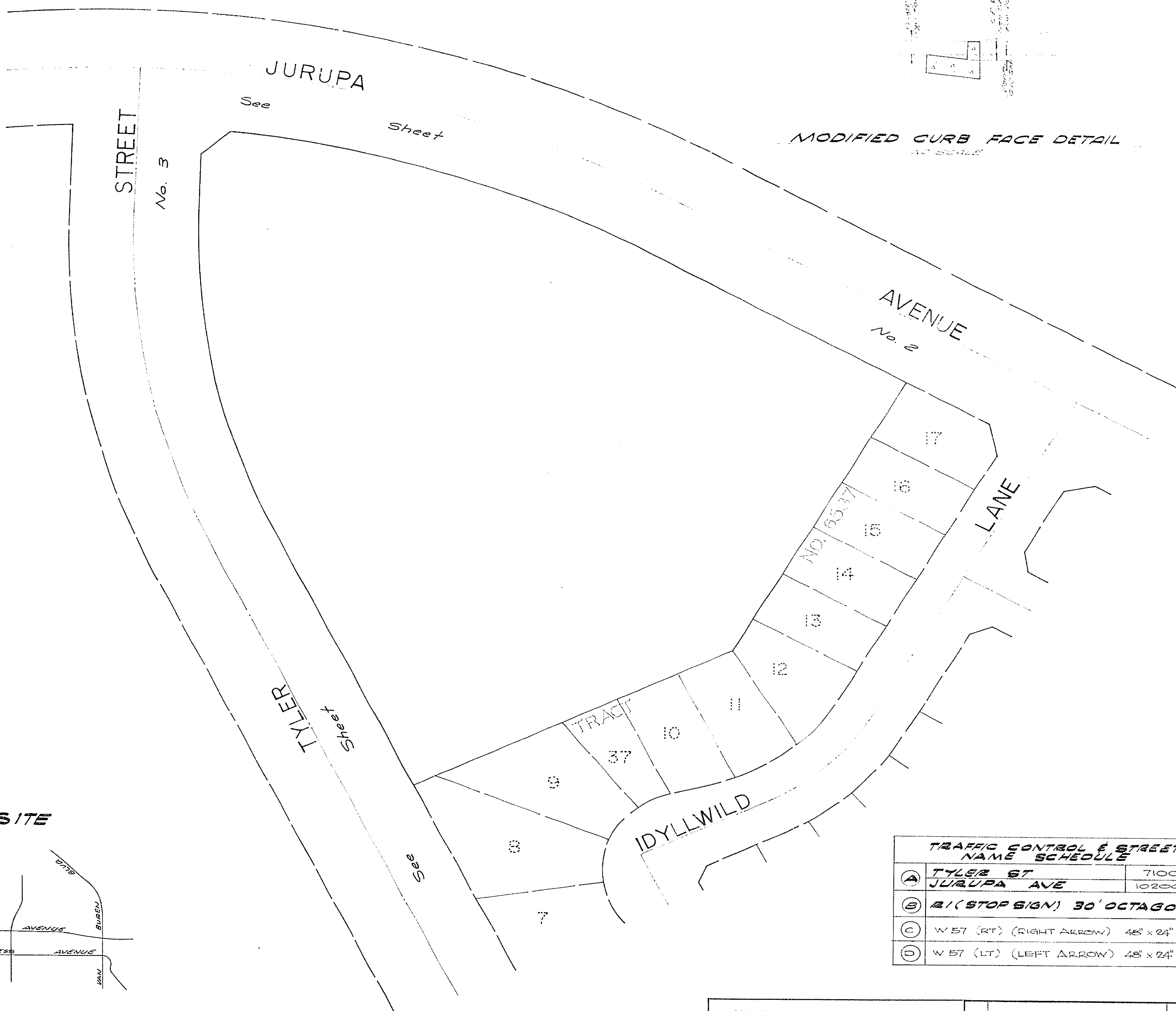
REVISIONS
 NO. DATE
 1. 11-17-77
 2. 11-17-77
 3. 11-17-77

CITY OF RIVERSIDE, CALIFORNIA
 PUBLIC WORKS DEPARTMENT
 APPROVED BY: *[Signature]* DATE 11-17-77
 DIRECTOR OF PUBLIC WORKS
 DATE 3/28/78

STREET PLAN AND PROFILE
TYLER STREET
 T.C.-R.-36-745
 SCALE: Horiz. 1"=20', Vert. 1"=4'

ACCOUNT NO.
 DRAWING NUMBER
R-2051
 SHEET 3 OF 3
 75-146-2





- CONSTRUCTION NOTES:**
- Construct 4' Conc. Curb and Gutter per Riverside City Standard No. 200 (6'CA) TYPE II
 - Construct 6' Conc. Curb Sidewalk per Riverside City Standard No. 225
 - Construct 4" A.C. Pavement over 1 1/2" DG. or 9/16" AC over compacted native
 - Install 12" x 57" CURB TYPE "N" (SEE SPECIFICATIONS FOR CURB TYPE "N")
 - Construct Wheelchair Ramp per Riverside City Standard No. 304
 - Construct Barricade per City Standard No. 180 with type "N" (P20) reflector
 - Place 2" x 4" Redwood Header
 - Const 4' Conc. Curb per Riverside City Standard No. 200 (6'CA) TYPE II

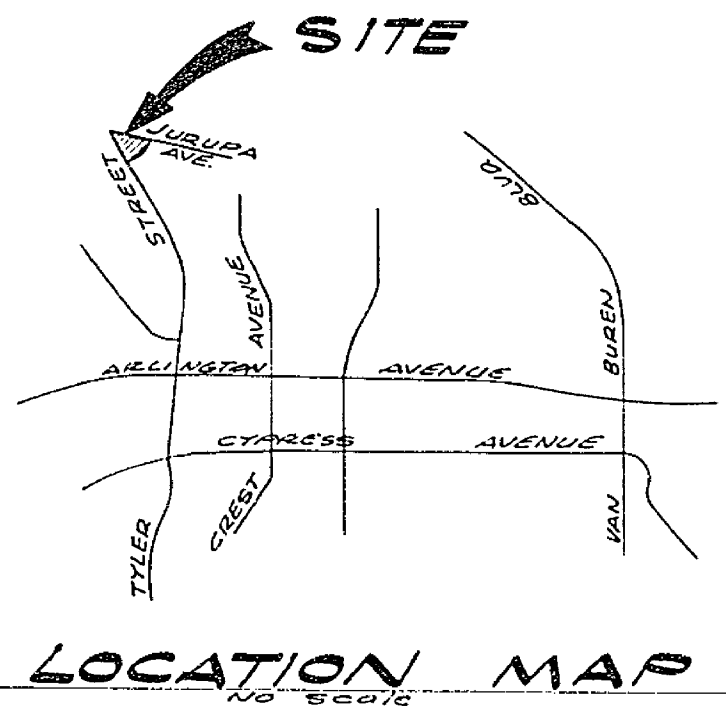
- GENERAL NOTES:**
- Construction shall be in accordance with the standard specifications for Public Works Construction 1974 Edition, and per City of Riverside Standard Drawings.
 - All flagged elevations shall be staked in the field by the Engineer.
 - The Contractor shall contact the Public Service Dept. (787-7251) to pick up any existing and/or barricades that are being removed.
 - Onway Approaches shall be located as indicated on plan and shall be constructed per City of Riverside Standard No. 302 (A-30, 8' x 4').
 - Curb shall be staked at 25' intervals and 3' offsets.
 - Traffic control signs must be placed prior to opening streets to traffic.
 - It shall be the responsibility of the contractor to clear the right of way in accordance with the provisions of law as it affects each utility including irrigation lines and appurtenances and of no cost to the City.
 - See street lighting plans for number and location of required street lights.
 - Trim edge of existing pavement where new pavement joins to a smooth straight line. Construct match up paving as shown on plans to produce a smooth section.
 - See landscaping & Sprinkler system plans for parkway on Tyler Street and Jurupa Avenue.
 - THE PRIVATE ENGINEER SIGNING THESE PLANS IS RESPONSIBLE FOR THE ACCURACY AND ACCEPTABILITY OF THE WORK HEREON. IN THE EVENT OF DISCREPANCIES ARISING DURING CONSTRUCTION, THE PRIVATE ENGINEER SHALL BE RESPONSIBLE FOR DETERMINING AN ACCEPTABLE SOLUTION AND REVIEWING THE PLANS FOR APPROVAL BY THE CITY.
 - TRAFFIC SIGNAL CONDUIT AND PULLBOX INSTALLATION SHALL CONFORM TO THE PROVISIONS OF SECTION 05.01 OF THE STATE STANDARD SPECIFICATIONS, THE STANDARD PLANS AND THE CITY OF RIVERSIDE STD. DWG. NO. 600.
 - LOCATION OF POLE CONDUITS & PULLBOXES WILL BE ESTABLISHED IN THE FIELD BY THE TRAFFIC ENGINEER OR HIS REPRESENTATIVE.
 - PROPOSED ELECTRICAL UNDERGROUND FACILITIES SHOWN ON SHEET 3 TO BE INSTALLED BY CITY OF RIVERSIDE PUBLIC UTILITIES DEPARTMENT AFTER INSTALLATION OF CURB & GUTTER AND PRIOR TO INSTALLATION OF PAVEMENT. CONTACT 787-7381 FOR COORDINATION.

BENCH MARK:
 1/4" Nail in curb on Tyler Street and Gaylord Avenue
 Produced per City of Riverside RA 700/1 Elevation 775.21
 (Adjusted to 272 datum elev 775.09 in September 1975)

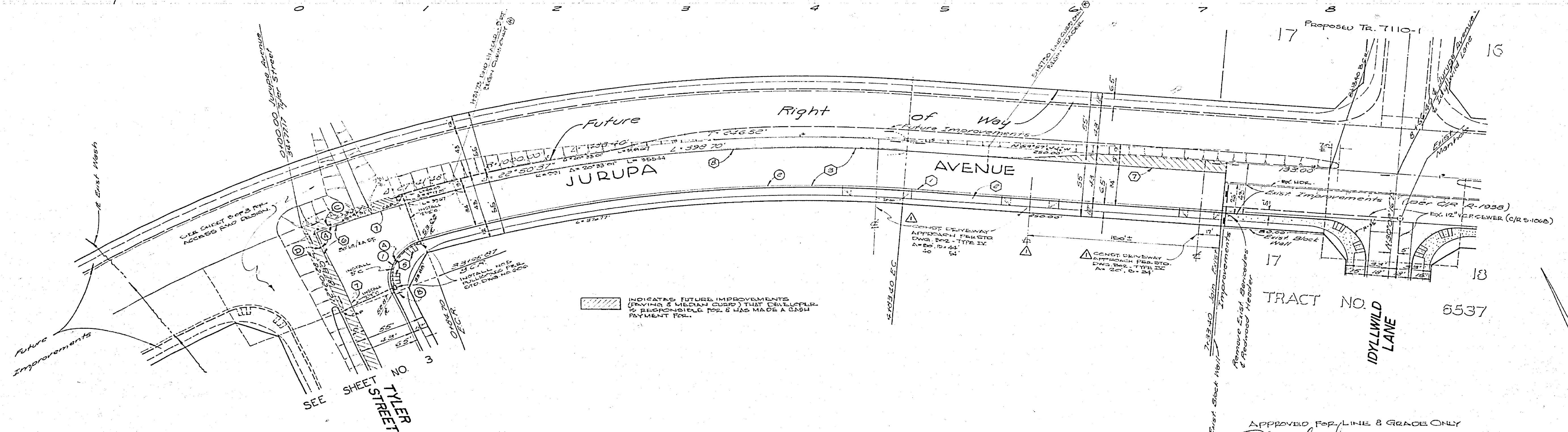
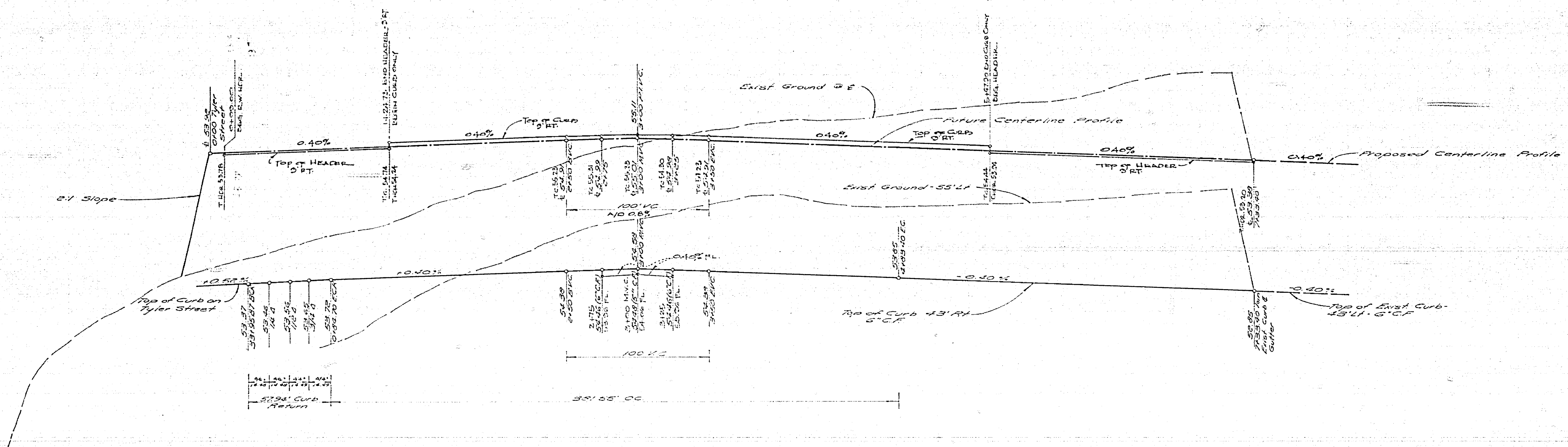
TRAFFIC CONTROL & STREET NAME SCHEDULE

(A)	TYLER ST	7100
(B)	JURUPA AVE	10200
(S)	B1 (STOP SIGN) 30' OCTAGON	
(C)	W 57 (RT) (RIGHT ARROW) 48" x 24"	
(D)	W 57 (LT) (LEFT ARROW) 48" x 24"	

APPROVED FOR LINE & GRADE ONLY
 [Signature] 11-7-77
 PUBLIC WORKS ENGINEER DATE



PUBLIC UTILITIES DEPT. - ELECT. DIV. APPROVED BY: [Signature] CHIEF UTILITY ENGINEER DATE:	ALBERT A. WEBB ASSOCIATES CIVIL ENGINEERS RIVERSIDE, CALIFORNIA APPROVED BY: [Signature] DATE: 3/16/77 R.E. No. 2472 WORKS FOR: ANDREWS DEV CO. P. 1081	CITY OF RIVERSIDE, CALIFORNIA PUBLIC WORKS DEPARTMENT APPROVED BY: [Signature] DATE: 11/7/77 PRINCIPAL ENGINEER PUBLIC WORKS DEPARTMENT TRAFFIC DIVISION CHIEF PUB. WKS. ENGR. TRAINING DEPT.	Z. C. R-36-745 STREET INDEX SCALE AS SHOWN	ACCOUNT No. DRAWING NUMBER R-2051 SHEET 1 OF 3 75-146-A
	DESIGNED BY: [Signature] DRAWN BY: [Signature] CHECKED BY: [Signature]		DATE: 11/7/77	

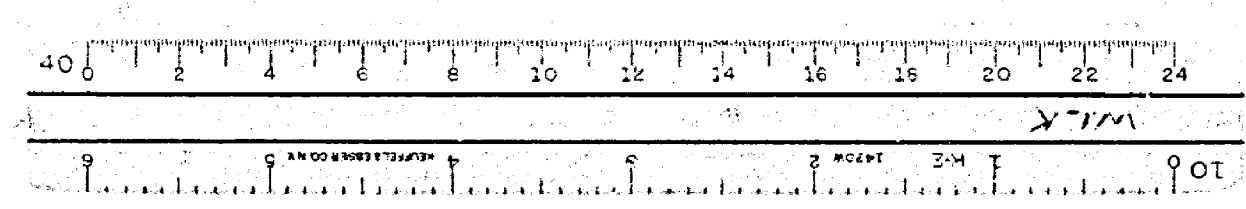


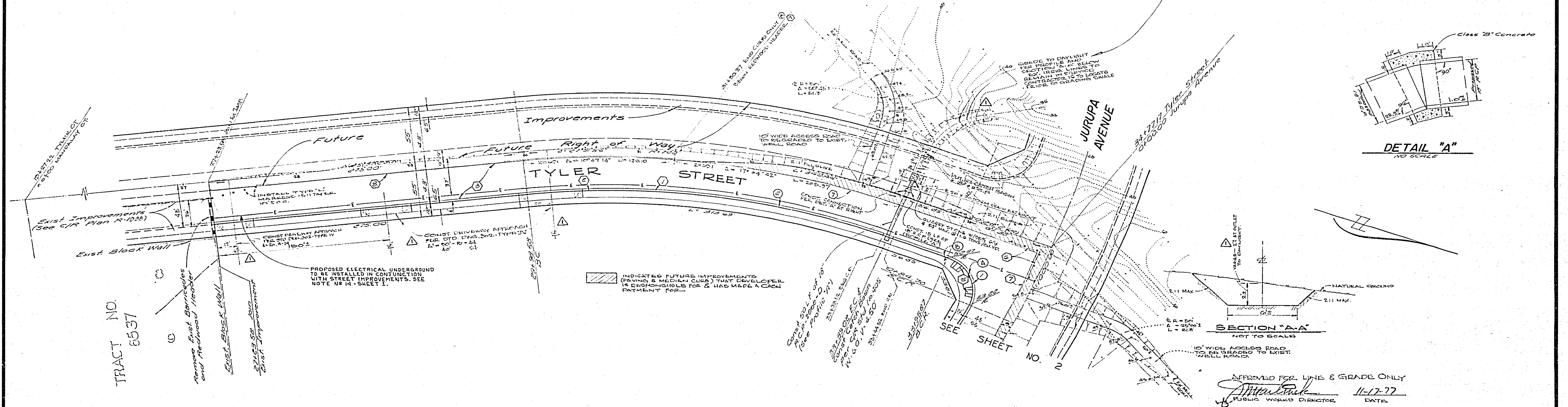
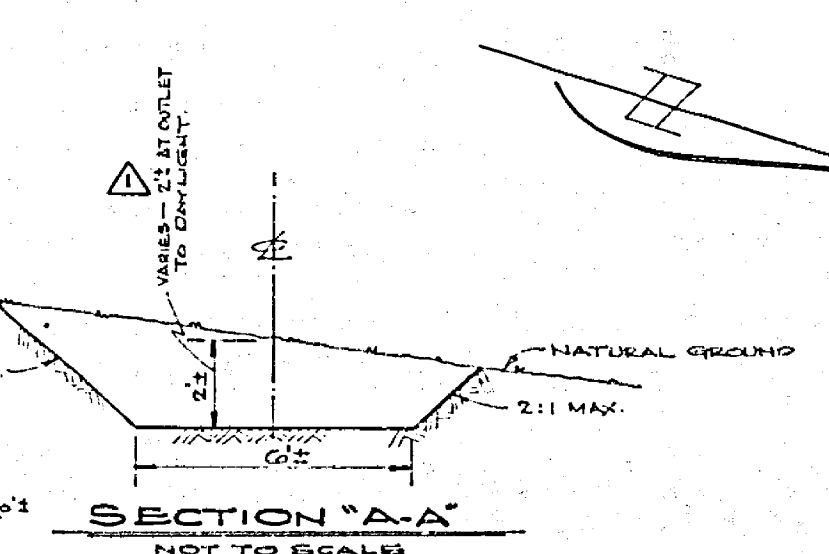
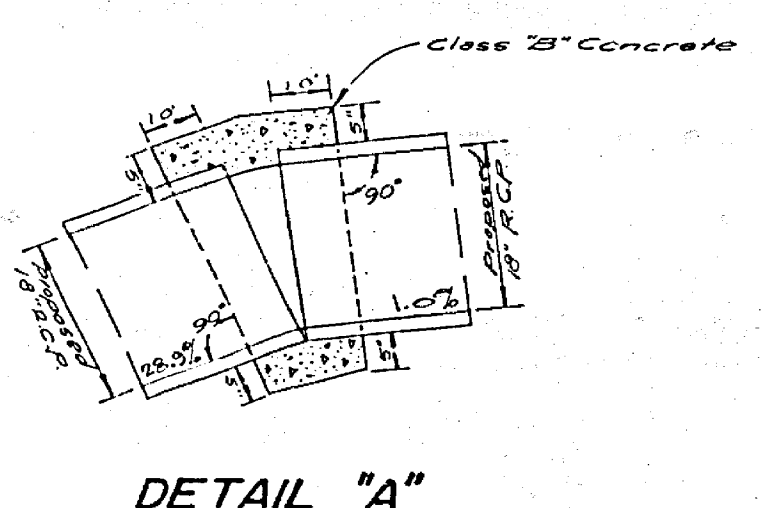
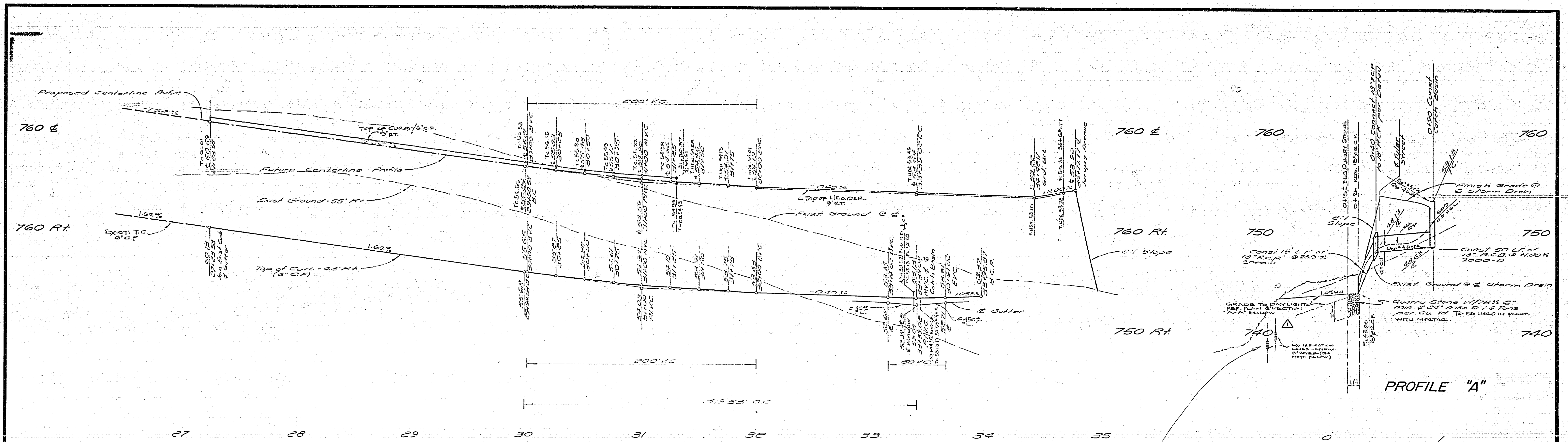
CURB CURVE DATA				
NO.	Δ	A	L	T
1.	94°51'11"	35.00'	57.94'	33'10"
2.	62°50'37"	95.70'	331.55'	123.34'

BENCH MARK:
 2x Nail in East Curb on Tyler Street, on E Gaylord Avenue Produced per City of Riverside P.B. 7081, Stationing 720.81, Adjusted to CIP Datum Elev 720.03 in September 1973.

APPROVED FOR LINE & GRADE ONLY
[Signature] 11-17-73
 PUBLIC WORKS DIRECTOR DATE

ALBERT A. WEBB ASSOCIATES CIVIL ENGINEERS RIVERSIDE, CALIFORNIA APPROVED BY <i>[Signature]</i> DATE 3/10/77 R.E. No. SNTS		CITY OF RIVERSIDE, CALIFORNIA PUBLIC WORKS DEPARTMENT APPROVED BY <i>[Signature]</i> DATE 4/29/78 PRINCIPAL ENGINEER PARK DEPARTMENT TRAFFIC DIVISION CHIEF WORKER PLANNING DEPT		STREET PLAN AND PROFILE JURUPA AVENUE Z.C. - R-36-745 SCALE: Horiz. 1"=20', Vert. 1"=4' ACCOUNT No. DRAWING NUMBER R-2051 SHEET 2 OF 3 075-146-A
--	--	--	--	--





TRACT NO. 6537

CURB CURVE DATA				
No.	A	B	C	T
1	94°51'11"	35.00	57.94	38.10
2	67°51'56"	65.00	31.93	142.50

BENCH MARK:
 1/4" Nail in East Curb on Tyler Street on E. Jurupa Avenue
 Produced per City of Riverside PG 706/1 Division
 170' 0" adjusted to City Datum 578.03 in Sept. 1978

PUBLIC UTILITIES DEPT.-ELECT. DIV.
 APPROVED BY: [Signature]
 P.E. CHIEF UTILITY ENG. ELECT.
 DATE: 2-27-77

ALBERT A. WEBB ASSOCIATES
 CIVIL ENGINEERS
 RIVERSIDE, CALIFORNIA
 APPROVED BY: [Signature]
 R.E. No. 2051
 DATE: 3/10/77

DESIGNED BY: [Signature]
 DRAWN BY: [Signature]
 CHECKED BY: [Signature]

CITY OF RIVERSIDE, CALIFORNIA
 PUBLIC WORKS DEPARTMENT
 APPROVED BY: [Signature]
 PRINCIPAL ENGINEER
 DATE: 3/10/77

STREET PLAN AND PROFILE
TYLER STREET
 2-C-R-36-745
 SCALE: Horiz. 1"=20', Vert. 1"=4'

ACCOUNT No. R-2051
 DRAWING NUMBER SHEET 3 OF 3

