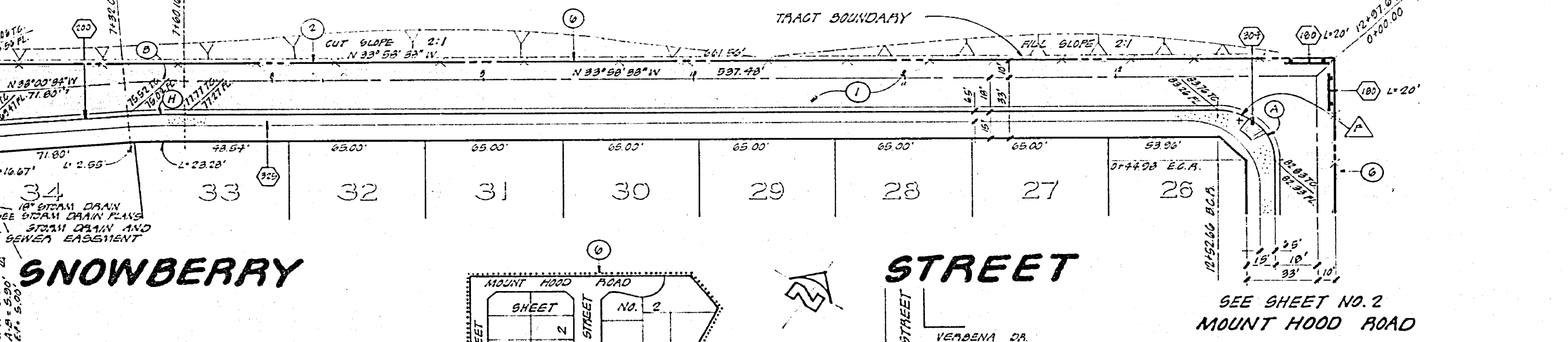
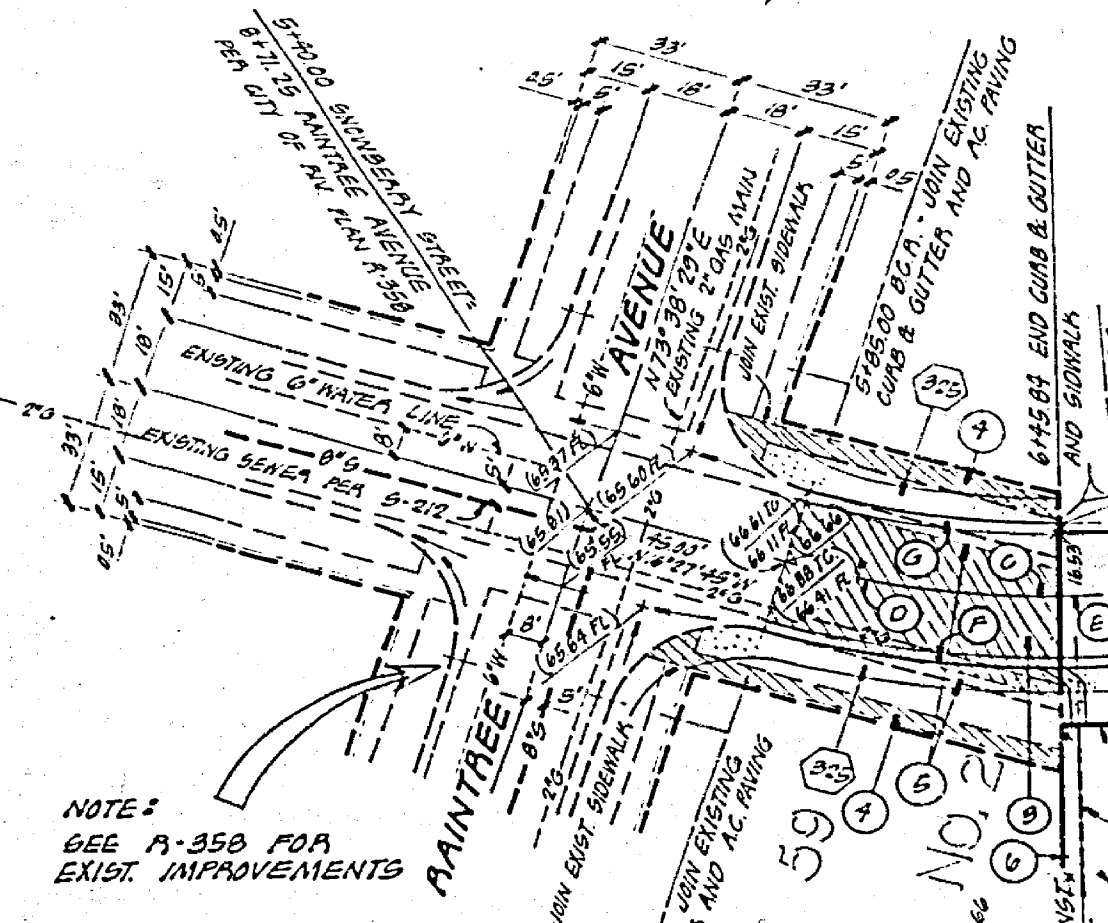


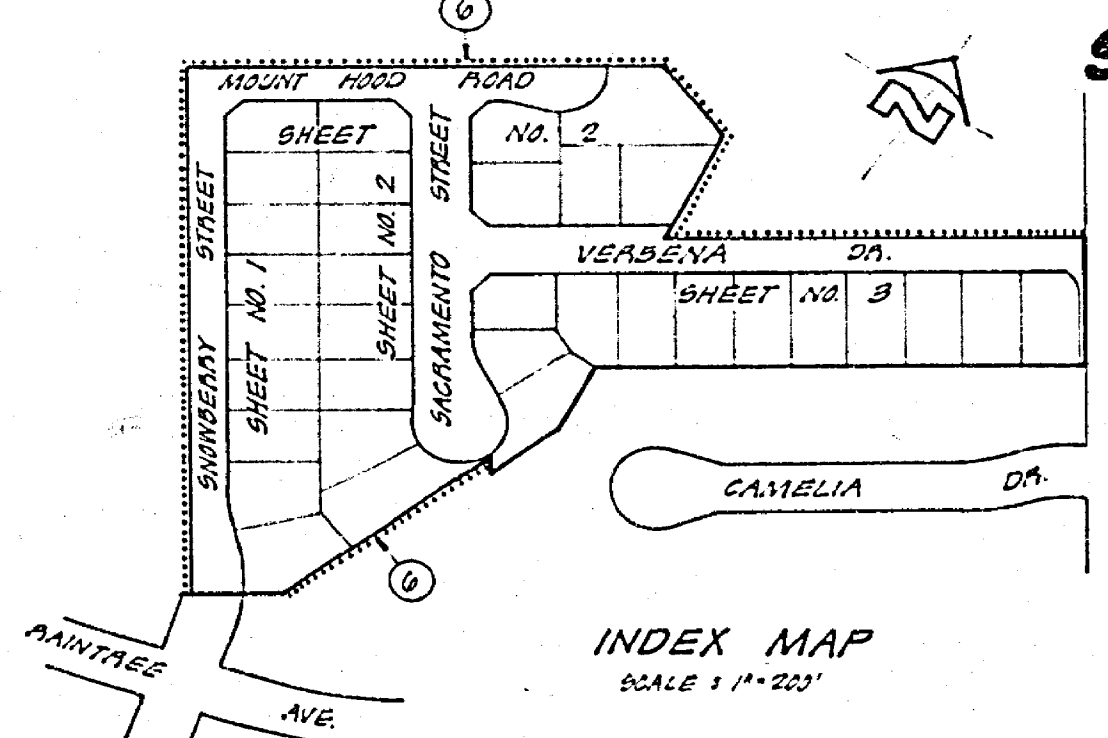
CONSTRUCTION NOTES

- (1) CONST. BARRICADE PER STD. NO. 201
- (2) CONST. CURB AND GUTTER (C.G.F.) PER STD. NO. 200
- (3) CONST. CROSS CUTTER PER STD. NO. 200
- (4) CONST. ASPHALT CONCRETE BEAM PER STD. NO. 250
- (5) CONST. DRIVEWAY APPROACH PER STD. NO. 302
- (6) CONST. WHEELCHAIR RAMP PER STD. NO. 304
- (7) CONST. SIDEWALK PER STD. NO. 305
- (8) CONST. CATCH BASIN PER STD. NO. 405 (N+40)
- (9) CONST. CURB OUTLET PER STD. NO. 410
- (10) CONST. C.M.F. INLET PER STD. NO. 412
- (11) INSTALL TYPE 'L' MANHOLE PER STD. NO. 605
- (12) CONST. CONCRETE BUSH WALL (8" HIGH) PER STD. NO. 701

CURVE DATA	RADIUS	DELTA	TANGENT	LENGTH
A	27.00'	83°58'33"	26.93'	42.43'
B	300.00'	04°01'55"	13.23'	28.15'
C	222.00'	21°32'50"	38.05'	78.21'
D	200.00'	17°26'11"	33.67'	63.55'
E	200.00'	03°13'33"	7.18'	14.35'
F	218.00'	21°32'59"	41.48'	81.05'
G	182.00'	17°28'24"	27.97'	55.30'
H	381.00'	04°01'55"	13.44'	28.88'



SIGN SCHEDULE	DESCRIPTION	SIZE
A	A-1 (8 1/2" SIGN) 30" OCTAGON	30" X 30"
B	(NOT A THROUGH STREET)	24" X 24"
C	ADAMS ST.	4400
D	VERBERNA DR.	6300
E	SACRAMENTO ST.	4300
F	Mt. Hood Rd.	4400
G	SNOWBERRY ST.	4400



HAWKINS, ROBERTSON & ASSOCIATES
 ENGINEERS • SURVEYORS
 9756 BULLHEADER BL. • RIVERSIDE, CA • 957-9522
 APPROVED BY: *Charles C. Roberts*
 DATE: 12-21-77
 CHECKED BY: *Charles Robertson*
 DATE: 12-21-77

PLANNING DEPARTMENT
 APPROVED BY: *J. F. ...*
 DATE: 12-21-77

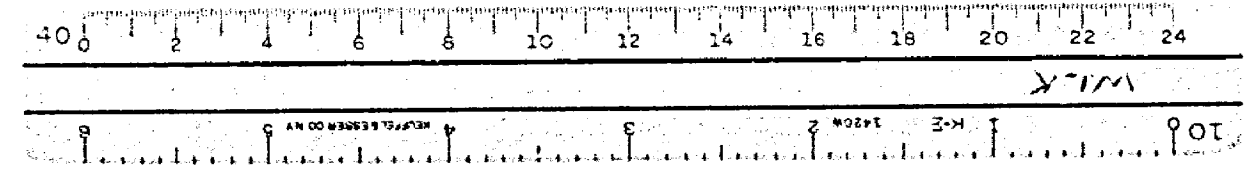
CITY OF RIVERSIDE, CALIFORNIA
 DEPARTMENT OF PUBLIC WORKS

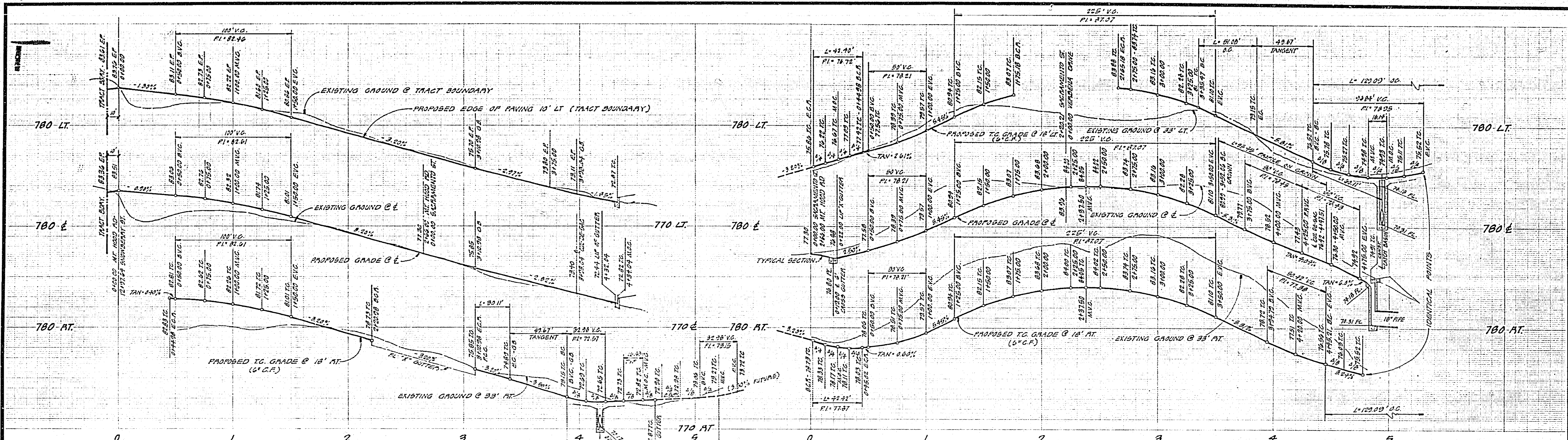
BENCH MARK: CITY OF RIV. NO. 64-E
 P.C. POINT AND T.O. IN M.O.G. OF S.W. CORNER
 RETURN OF ADAMS ST. AND ARLINGTON AVE.
 ELEV. 181.01

TRACT NO. 8660
 STREET PLAN AND PROFILE
 SNOWBERRY STREET

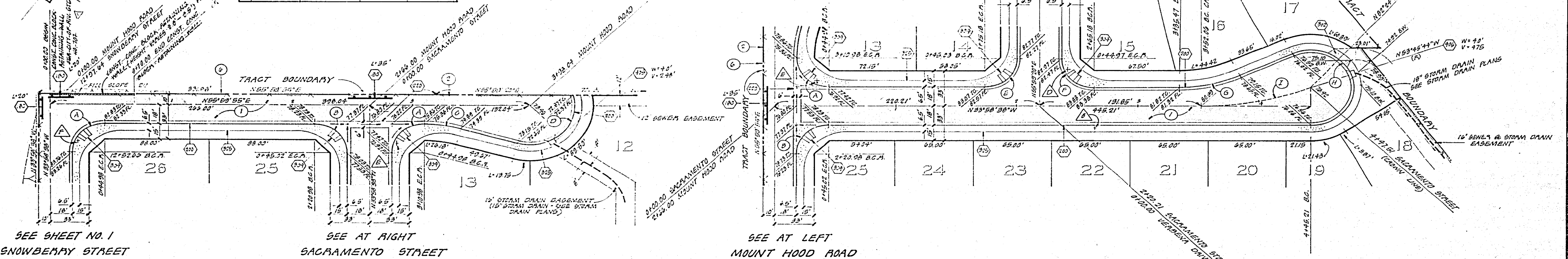
PROJECT NO. **R-2060**
 SHEET **1** OF **3**
 FILE NO. **77-2697**

- GENERAL NOTES**
- THE PRIVATE ENGINEER SIGNING THESE PLANS IS RESPONSIBLE FOR THE ACCURACY AND ACCEPTABILITY OF THE WORK HEREON. IN THE EVENT OF DISCREPANCIES ARISING DURING CONSTRUCTION, THE PRIVATE ENGINEER SIGNING THESE PLANS SHALL BE RESPONSIBLE FOR DETERMINING AN ACCEPTABLE SOLUTION AND REVISIONS TO THE PLANS FOR APPROVAL BY THE CITY.
 - CONSTRUCTION SHALL BE IN ACCORDANCE WITH THE STANDARD SPECIFICATIONS FOR PUBLIC WORKS CONSTRUCTION 1978 EDITION, AND CITY OF RIVERSIDE STANDARD DRAWINGS.
 - THE SUBMITTER SHALL ARRANGE FOR A SOIL TEST TO BE MADE BY A SOIL ENGINEER. AFTER THE TESTS HAVE BEEN PREPARED TO FURNISH GRADE, DEPTH OF BASE MATERIAL AND A.C. PAVING SHALL BE DETERMINED BY THE CITY OF RIVERSIDE DESIGN STANDARDS AND TEST PROCEDURES.
 - IT SHALL BE THE RESPONSIBILITY OF THE CONTRACTOR TO CLEAN THE RIGHT OF WAY IN ACCORDANCE WITH THE PROVISIONS OF LAW AS TO EFFECTS EACH UTILITY INCLUDING IRRIGATION LINES AND APPURTENANCES AND AT HIS COST TO THE CITY.
 - TRIM EDGES OF EXISTING PAVEMENT WHERE NEW PAVEMENT JOINS TO A SMOOTH STRAIGHT LINE. CONSTRUCT MATCH-UP PAVING AS SHOWN IN PLAN.
 - CONSTRUCT DRIVEWAY APPROACHES PER STD. DRAWING 302. EXACT SIZE AND LOCATION TO BE DETERMINED AT THE TIME OF CONSTRUCTION AS APPROVED BY THE TRAFFIC ENGINEER.
 - ALL PROPOSED ELEVATIONS SHALL BE STAKED IN THE FIELD BY THE PRIVATE ENGINEER.
 - 4" X 4" BLOCKS FOR MAIL BOXES REQUIRED IN CURB SIDEWALK.
 - TRAFFIC CONTROL SIGNS MUST BE IN PLACE PRIOR TO OPENING STREETS TO TRAFFIC.
 - CURBS WILL BE STAKED AT A 3' OFFSET AND 25' INTERVALS.
 - SEE "STREET LIGHTING PLANS" FOR QUANTITY AND LOCATION OF REQUIRED STREET LIGHTS.
 - SEE "LANDSCAPING AND SPRINKLING SYSTEM PLANS" FOR ARRANGING ON ADAMS STREET.





CURVE DATA			
RADIUS	DELTA	TANGENT	LENGTH
27.00'	23°58'39"	22.23'	41.43'
27.00'	30°01'27"	27.31'	32.32'
115.00'	18°05'03"	18.14'	82.11'
25.00'	31°07'45"	22.00'	35.11'
27.00'	20°00'00"	22.00'	42.43'
27.00'	23°57'58"	22.35'	42.43'
115.00'	05°21'03"	20.07'	81.82'
35.00'	02°21'03"	12.00'	25.45'



SEE SHEET NO. 1
SNOWBERRY STREET

SEE AT RIGHT
SACRAMENTO STREET

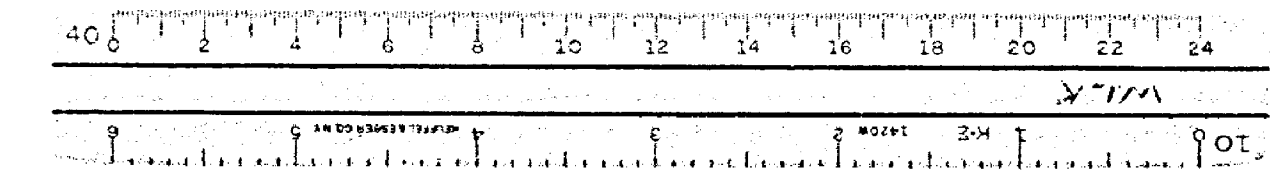
SEE AT LEFT
MOUNT HOOD ROAD

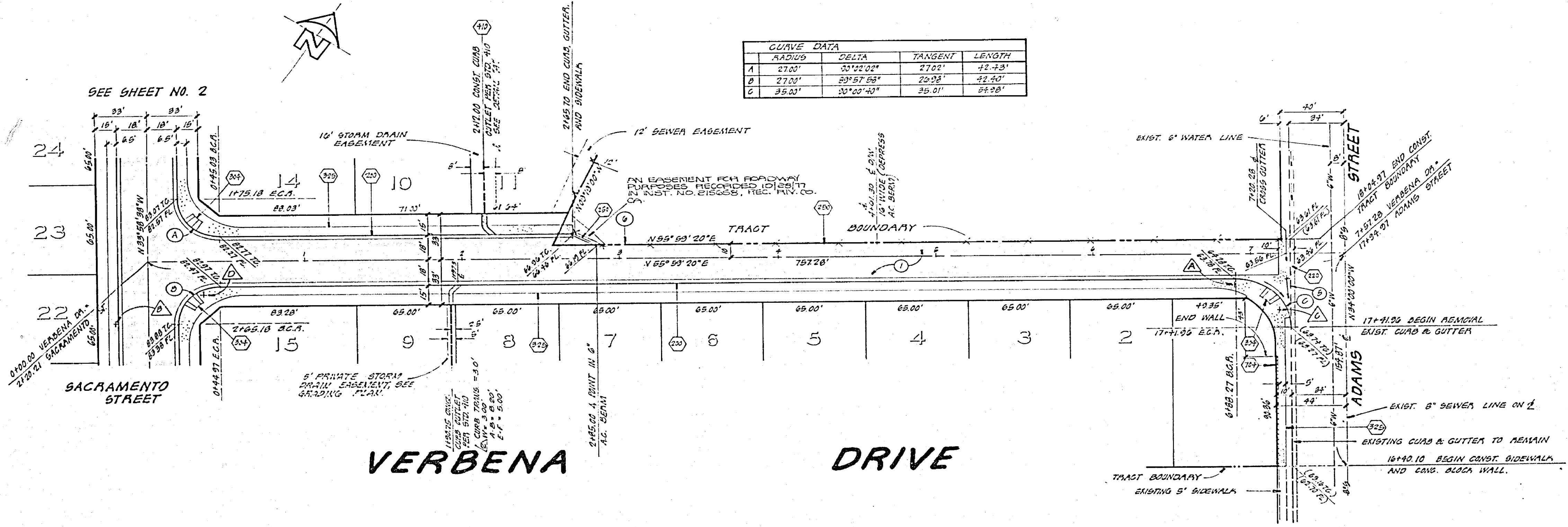
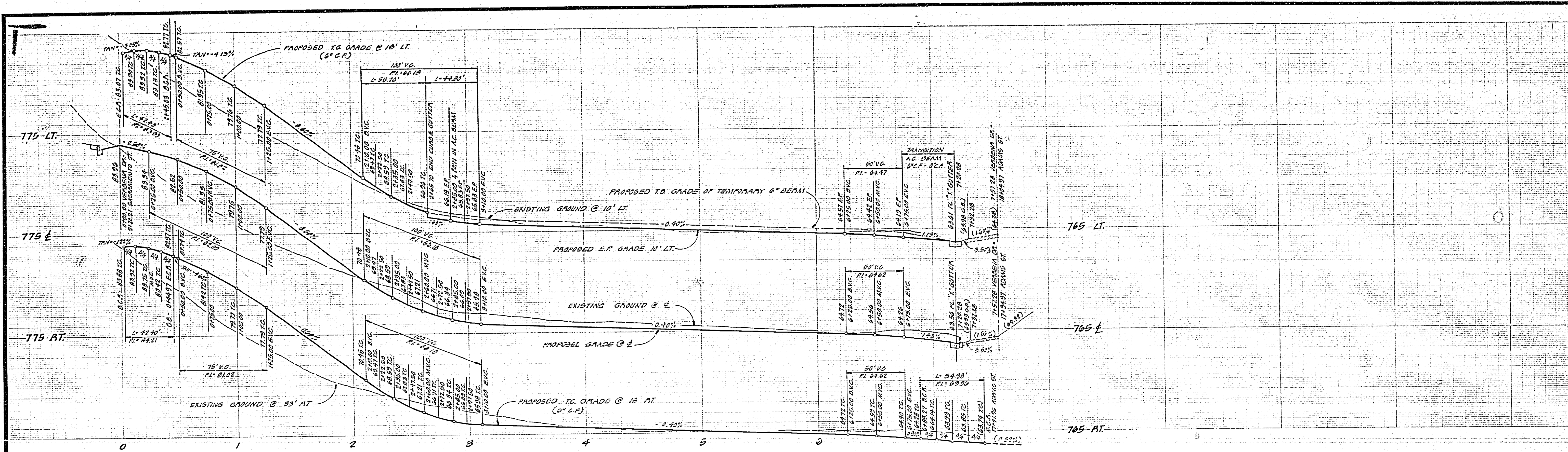
MOUNT HOOD ROAD

SACRAMENTO STREET

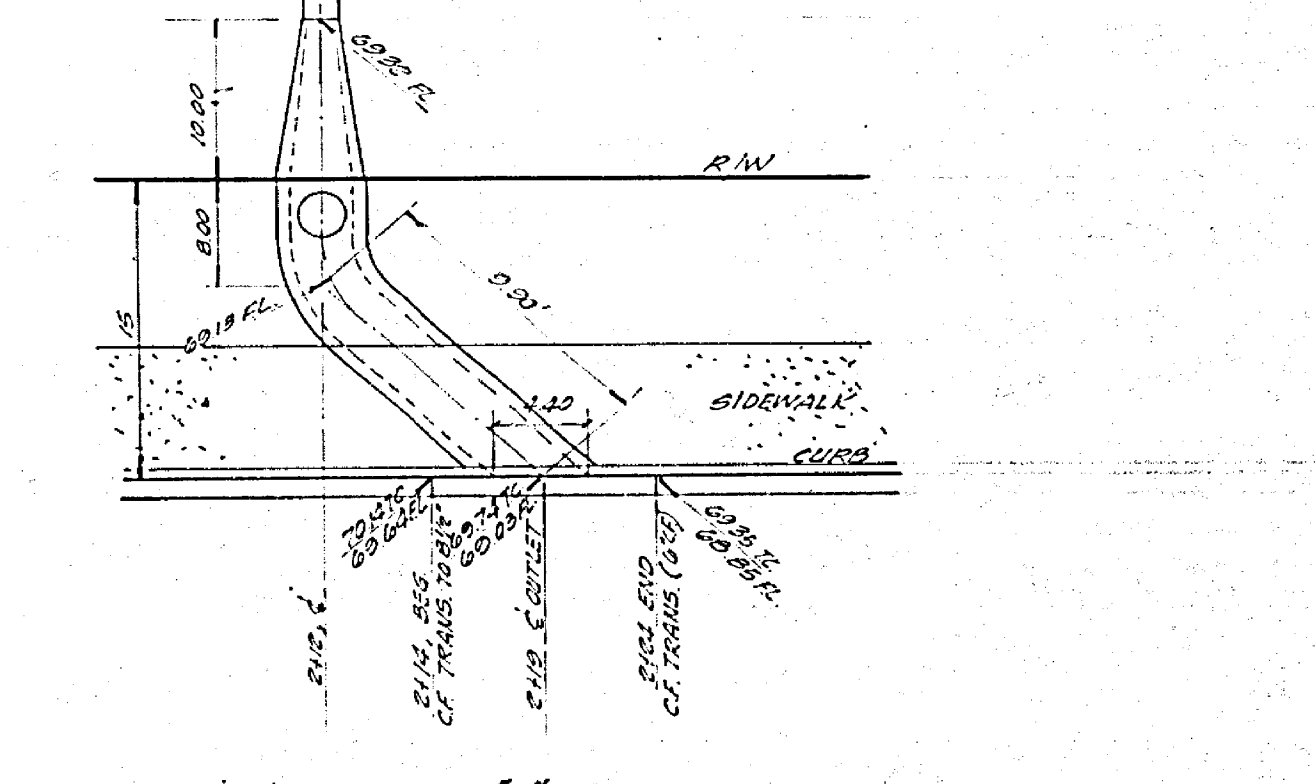
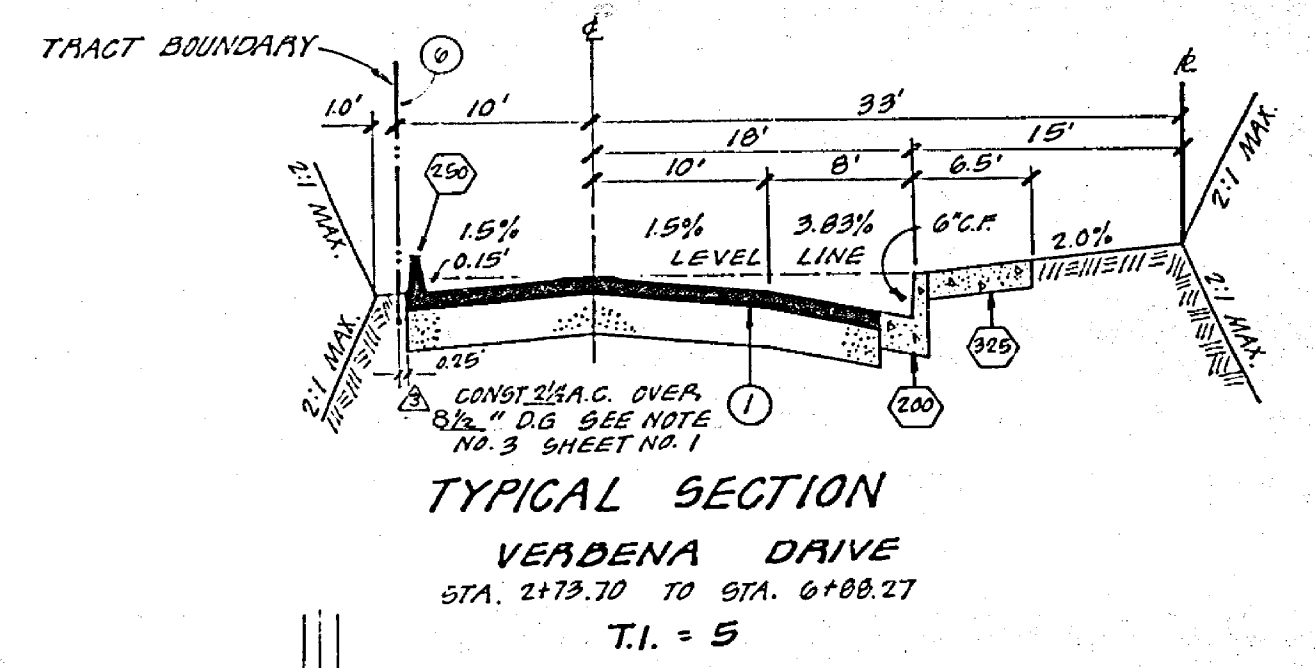
NOTE: SEE SHEET NO. 1 FOR GENERAL NOTES AND CONSTRUCTION NOTES.

PLANNING DEPARTMENT APPROVED BY: [Signature] DATE: 11/14/77	HAWKINS, ROBERTSON & ASSOCIATES APPROVED BY: [Signature] DATE: 11/17/77 CHARLES E. ROBERTSON ACE 18335	CITY OF RIVERSIDE, CALIFORNIA DEPARTMENT OF PUBLIC WORKS	TRACT NO. 8660 STREET PLAN AND PROFILE MOUNT HOOD ROAD AND SACRAMENTO STREET	PROJECT NO. R-2060
				SHEET 2 OF 3
BEING MAP: CITY OF RIVERSIDE NO. 44-E FOR NAIL AND TAG IN M.O.C. OF S.W. CORNER RETURN ADAMS ST. & WALTON AV. ELEV. 781.01		DESIGNED BY: [Signature] DRAWN BY: [Signature] CHECKED BY: [Signature]	APPROVED BY: [Signature] DIRECTOR OF PUBLIC WORKS DATE: 11/14/77	FILE NO. 77-2697





CURVE DATA			
RADIUS	DELTA	TANGENT	LENGTH
A 27.00'	33°22'00"	27.00'	42.43'
B 27.00'	29°57'58"	22.92'	42.40'
C 35.00'	30°00'40"	35.00'	54.98'



PLANNING DEPARTMENT APPROVED BY: <i>JCF</i> DATE: 11/17/77	HAWKINS, ROBERTSON & ASSOCIATES ENGINEERS • SURVEYORS APPROVED BY: <i>Charles F. Roberts</i> DATE: 2-21-77 BENCH MARK: CITY OF RIVERSIDE NO. 64-E 10' NAIL AND 720 IN N.O. OF SW CORNER RETURN ARMS 6' AND ARRLINGTON AVE. ELEV. 781.01	ADD DETAIL 'A' FOR CURB OUTLET ADD DETAIL 'B' FOR CURB OUTLET ADD DETAIL 'C' FOR CURB OUTLET ADD DETAIL 'D' FOR CURB OUTLET ADD DETAIL 'E' FOR CURB OUTLET ADD DETAIL 'F' FOR CURB OUTLET ADD DETAIL 'G' FOR CURB OUTLET ADD DETAIL 'H' FOR CURB OUTLET ADD DETAIL 'I' FOR CURB OUTLET ADD DETAIL 'J' FOR CURB OUTLET ADD DETAIL 'K' FOR CURB OUTLET ADD DETAIL 'L' FOR CURB OUTLET ADD DETAIL 'M' FOR CURB OUTLET ADD DETAIL 'N' FOR CURB OUTLET ADD DETAIL 'O' FOR CURB OUTLET ADD DETAIL 'P' FOR CURB OUTLET ADD DETAIL 'Q' FOR CURB OUTLET ADD DETAIL 'R' FOR CURB OUTLET ADD DETAIL 'S' FOR CURB OUTLET ADD DETAIL 'T' FOR CURB OUTLET ADD DETAIL 'U' FOR CURB OUTLET ADD DETAIL 'V' FOR CURB OUTLET ADD DETAIL 'W' FOR CURB OUTLET ADD DETAIL 'X' FOR CURB OUTLET ADD DETAIL 'Y' FOR CURB OUTLET ADD DETAIL 'Z' FOR CURB OUTLET	CITY OF RIVERSIDE, CALIFORNIA DEPARTMENT OF PUBLIC WORKS APPROVED BY: <i>Paul C. Hall</i> DATE: 12/16/77	TRACT NO. 8660 STREET PLAN AND PROFILE VERBENA DRIVE HORIZ. SCALE: 1" = 40' VERT. SCALE: 1" = 4' SHEET 3 OF 3 FILE NO. 77-2697
			DESIGNED BY: <i>BOB</i> DRAWN BY: <i>BOB</i> CHECKED BY:	OFFICE ENGINEER: <i>BOB</i> PARK DEPARTMENT: <i>BOB</i> TRAFFIC DIVISION: <i>BOB</i> ASSISTANT CITY ENGINEER: <i>BOB</i>

