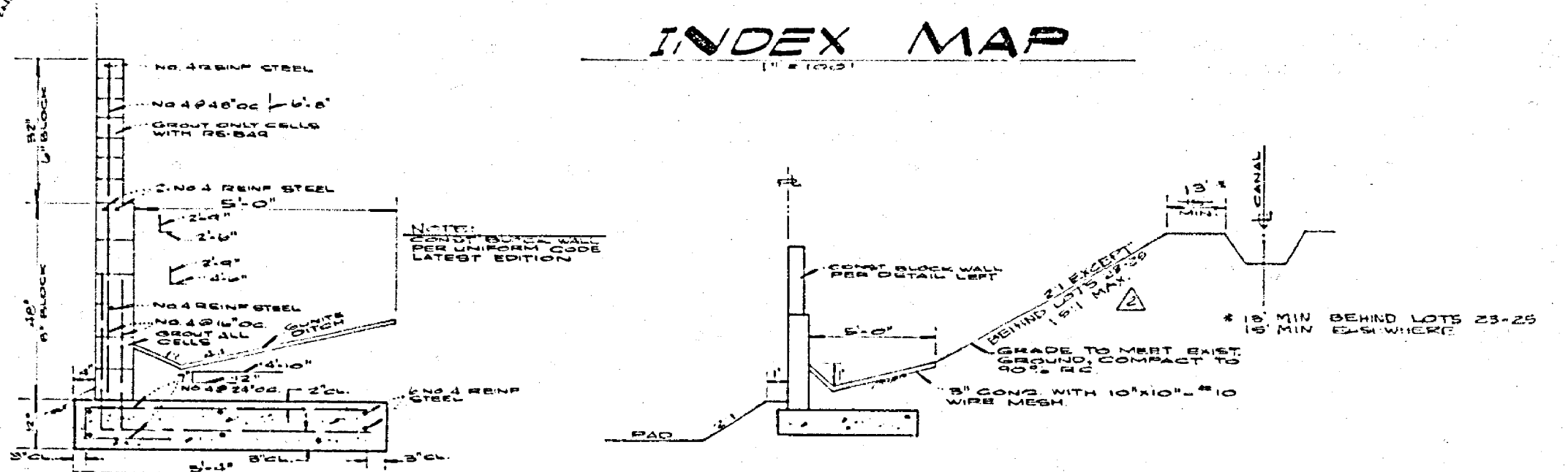
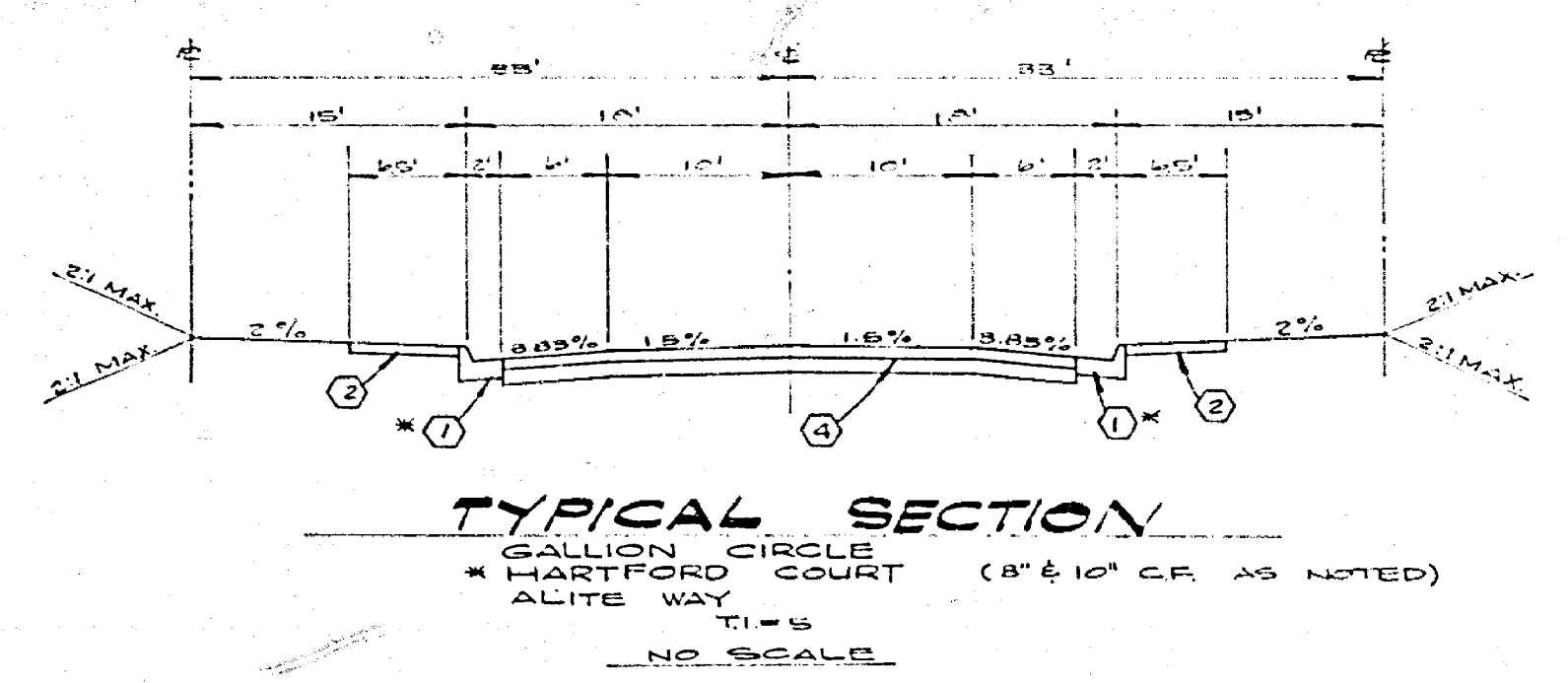
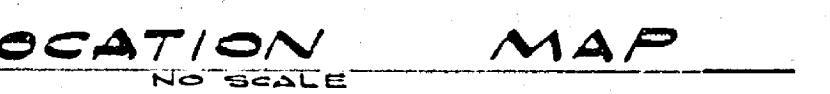


- GENERAL NOTES:**
1. THE PRIVATE ENGINEER SIGNING THESE PLANS IS RESPONSIBLE FOR THE ACCURACY AND ACCEPTABILITY OF THE WORK HEREON. IN THE EVENT OF DISCREPANCIES ARISING DURING CONSTRUCTION, THE PRIVATE ENGINEER SHALL BE RESPONSIBLE FOR DETERMINING AN ACCEPTABLE SOLUTION AND REVISING THE PLANS FOR APPROVAL BY THE CITY.
 2. IT SHALL BE THE RESPONSIBILITY OF THE CONTRACTOR TO CLEAR THE RIGHT OF WAY IN ACCORDANCE WITH THE PROVISIONS OF LAW AS IT AFFECTS EACH UTILITY INCLUDING IRRIGATION LINES AND APPURTENANCES AND AT NO COST TO THE CITY.
 3. CONSTRUCTION SHALL BE IN ACCORDANCE WITH THE CITY OF RIVERSIDE DEPARTMENT OF PUBLIC WORKS STANDARD DRAWINGS, AND THE STANDARD SPECIFICATIONS FOR PUBLIC WORKS CONSTRUCTION, 1974 EDITION.
 4. THE CONTRACTOR SHALL CONTACT THE PUBLIC SERVICE DEPT (787-726) TO PICK UP ANY EXIST. STD 180 BARRICADES THAT ARE BEING REMOVED. THE CITY'S INSPECTOR WILL MAKE THE FINAL DETERMINATION ON WHETHER A BARRICADE CAN BE RELOCATED.
 5. CONSTRUCT DRIVEWAY APPROACHES PER STD. DWS. 302. EXACT SIZE AND LOCATION TO BE DETERMINED AT THE TIME OF CONSTRUCTION AS APPROVED BY THE TRAFFIC ENGINEER.
 6. CURB AND GUTTER SHALL BE STAKED WITH 3' OFFSETS AT 20' INTERVALS.
 7. ALL TRAFFIC SIGNS SHALL BE INSTALLED PRIOR TO OPENING THE STREETS TO TRAFFIC.
 8. THE SUBDIVIDER SHALL ARRANGE FOR A SOILS TEST TO BE MADE BY A SOILS ENGINEER AFTER THE STREETS HAVE BEEN PREPARED TO ROUGH GRADE. DEPTH OF BASE MATERIAL AND AG. HAVING SHALL BE DETERMINED BY THE CITY OF RIVERSIDE DESIGN STANDARDS AND TEST PROCEDURES.
 9. SEE "STREET LIGHTING PLANS" FOR QUANTITY AND LOCATION OF REQUIRED STREET LIGHTS.
 10. ALL FLAGGED ELEVATIONS SHALL BE STAKED IN THE FIELD BY THE PRIVATE ENGINEER.
 11. 4"x4" BLOCKOUTS FOR MAIL BOXES REQUIRED IN CURB S/W.
 12. CONTRACTOR TO NOTIFY CITY OF RIVERSIDE, IRRIGATION DIVISION 48 HRS PRIOR TO BEGINNING CONSTRUCTION ADJACENT TO THE RIVERSIDE CANAL. NO ENTRY UPON RIVERSIDE CANAL RIGHT OF WAY UNTIL A RIGHT OF ENTRY PERMIT IS OBTAINED FROM C/R.

- CONSTRUCTION NOTES:**
- ① CONSTRUCT CURB AND GUTTER PER C/R STD 200, 6" CF EXCEPT WHERE NOTED AS 8".
 - ② CONSTRUCT CURB TYPE SIDEWALK PER C/R STD. 325.
 - ③ REMOVE BARRICADE (SEE GENERAL NOTE 4).
 - ④ CONSTRUCT 2 1/2" AG OVER 4" DS. OR "AG OVER COMPACTED NATIVE MATERIAL.
 - ⑤ CONSTRUCT CROSS GUTTER PER C/R STD 220.
 - ⑥ CONSTRUCT WHEELCHAIR RAMP PER C/R STD 304.
 - ⑦ CONSTRUCT 2"x4" REDWOOD HEADER.
 - ⑧ RELOCATE STANDARD 180 BARRICADE (SEE GENERAL NOTE 4).
 - ⑨ CONSTRUCT BARRICADE PER C/R STD 180.
 - ⑩ REMOVE REDWOOD HEADER.



STREET SIGN SCHEDULE		
NO.	NAME	NUMBER
(A)	GALLION CIR.	B200
(B)	ALITE WAY	11500
(C)	HARTFORD CT.	11500
(D)	W53 (NOT A THROUGH STREET)	24"x24"



BENCH MARK:
 E 20' PK. NAIL IN CENTER OF S.E. CURB RETURN AT INDIANA AVENUE AND FILLMORE STREET. ELEV. 108.768

ALBERT A. WEBB ASSOCIATES CIVIL ENGINEERS RIVERSIDE, CALIFORNIA		CITY OF RIVERSIDE, CALIFORNIA PUBLIC WORKS DEPARTMENT		STREET PLAN & PROFILE TRACT 7503-3	ACCOUNT NO. DRAWING NUMBER R-2069
APPROVED BY: <i>[Signature]</i> DATE: 10-21-77 R.E. No. 27105		APPROVED BY: <i>[Signature]</i> DATE: 11-03-77 TRAFFIC DIVISION		APPROVED BY: <i>[Signature]</i> DATE: 11-03-77 DIRECTOR OF PUBLIC WORKS	
CITY OF RIVERSIDE DOMESTIC SYSTEM & IRRIGATION SYSTEM BY: <i>[Signature]</i> DATE: 10-21-77 CHIEF UTILITIES ENGINEER		W 76-247 FOR CITATION BUILDERS FR. 1039		SHEET 1 OF 3 76-247 A	

780 Lt.

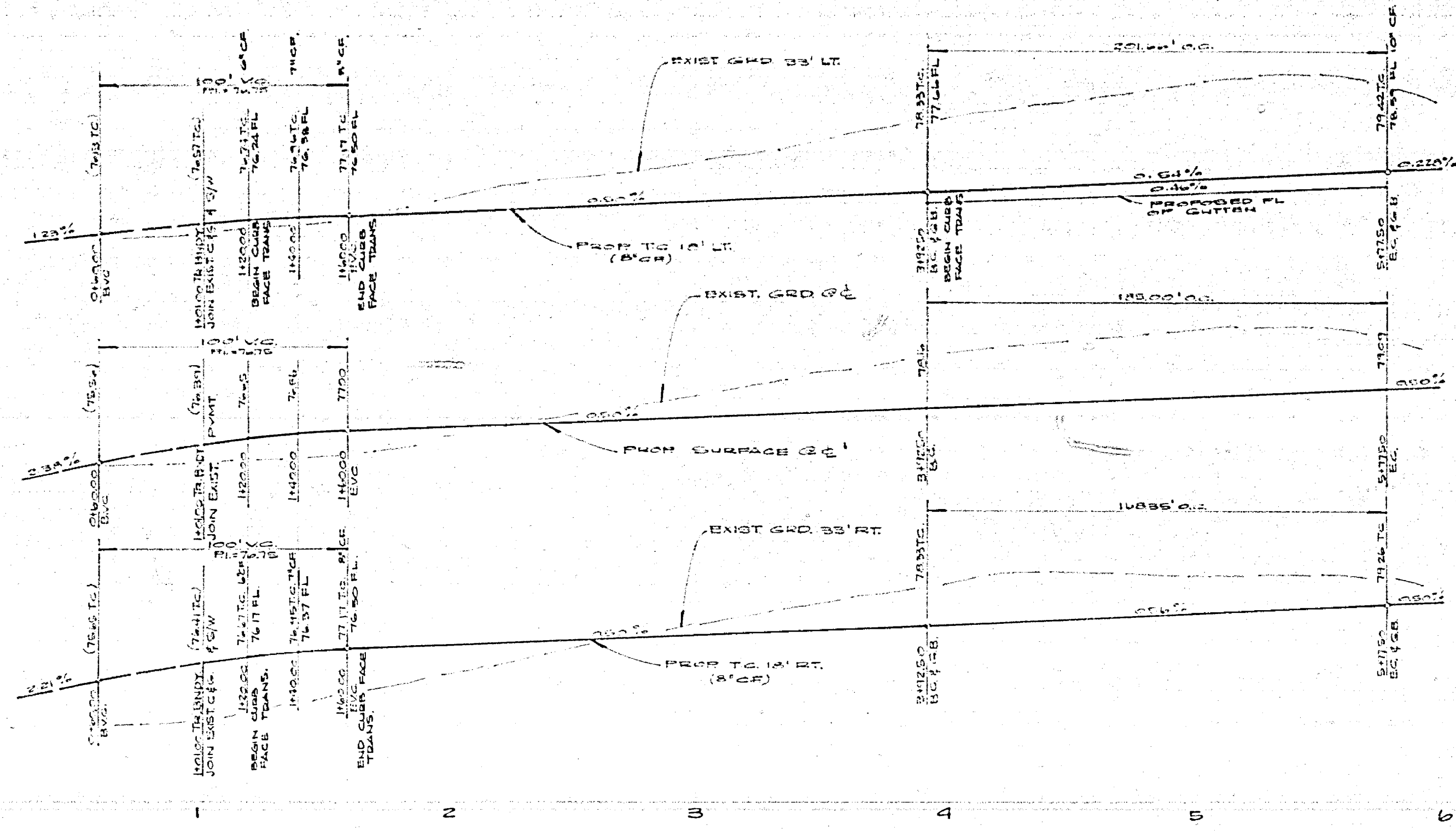
780 C.

780 Rt.

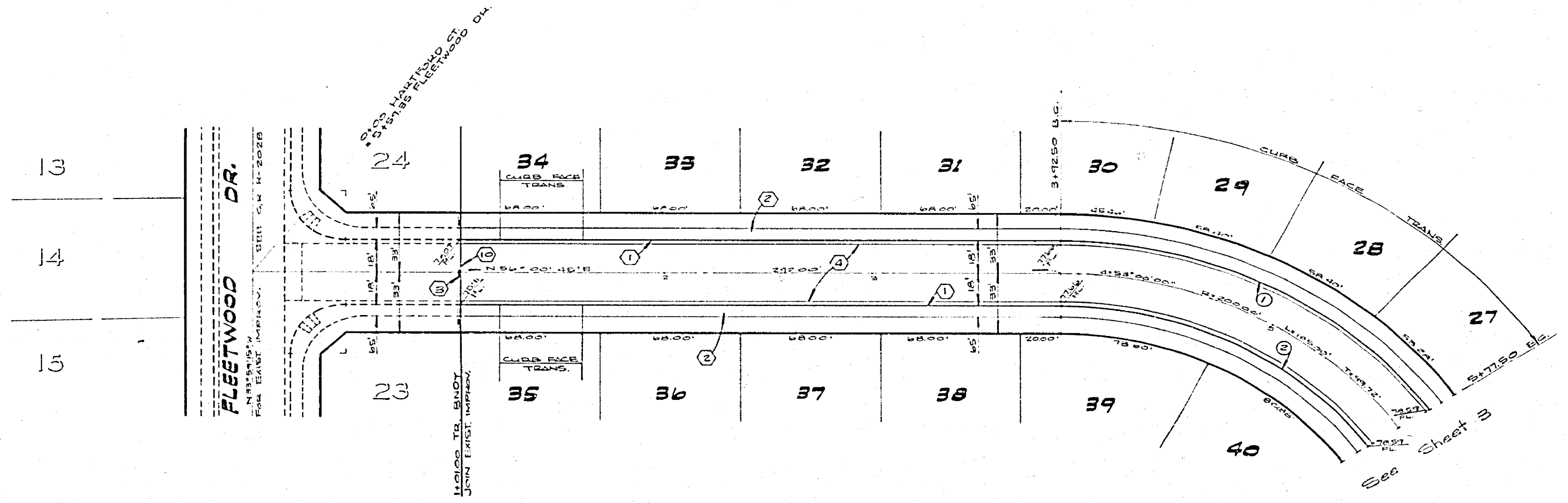
780 Lt.

780 C.

780 Rt.



NOTE:
ALL PLASSED ELEVATIONS TO BE STAKED IN THE FIELD BY THE ENGINEER.



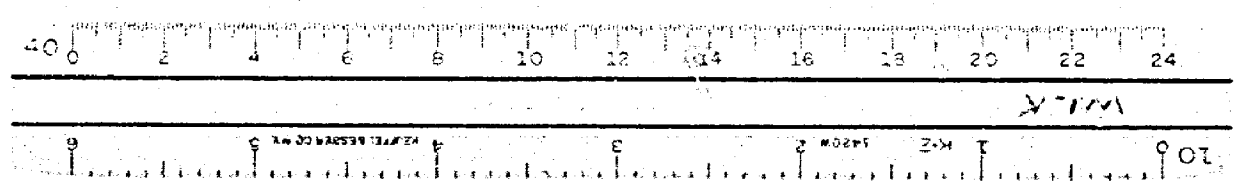
CURVE DATA				
No.	A	B	C	T
1	55°00'00"	210.00'	201.54'	108.47'
2	55°00'00"	182.00'	164.39'	82.74'

HARTFORD COURT

BENCH MARK:
5 20" PK. NAIL IN CENTER OF 30" CURB RETURN AT INDIANA AVENUE AND FILLMORE STREET. ELEV 780.168

NOTE:
SEE SHEET #1 FOR GENERAL & CONSTRUCTION NOTES

ALBERT A. WEBB ASSOCIATES CIVIL ENGINEERS RIVERSIDE, CALIFORNIA APPROVED BY: <i>[Signature]</i> DATE: <i>[Date]</i> R.E. No. 27155	MARK: _____ REVISIONS: _____ APPR. DATE: _____ DESIGNED BY: M.S. DRAWN BY: J.P. CHECKED BY: _____	CITY OF RIVERSIDE, CALIFORNIA PUBLIC WORKS DEPARTMENT	STREET PLAN & PROFILE TRACT 7503-3 HARTFORD CT.	ACCOUNT No. _____ DRAWING NUMBER R-2009 SHEET 2 OF 5
		APPROVED BY: <i>[Signature]</i> BY: <i>[Signature]</i> DATE: <i>[Date]</i> PRINCIPAL ENGINEER TRAFFIC DIVISION CHIEF PUBLIC WORKS ENGR.	APPROVED BY: <i>[Signature]</i> DIRECTOR OF PUBLIC WORKS DATE: <i>[Date]</i>	SCALE: HORIZ. 1"=40' VERT. 1"=4' 74-247-A



780 Lt.

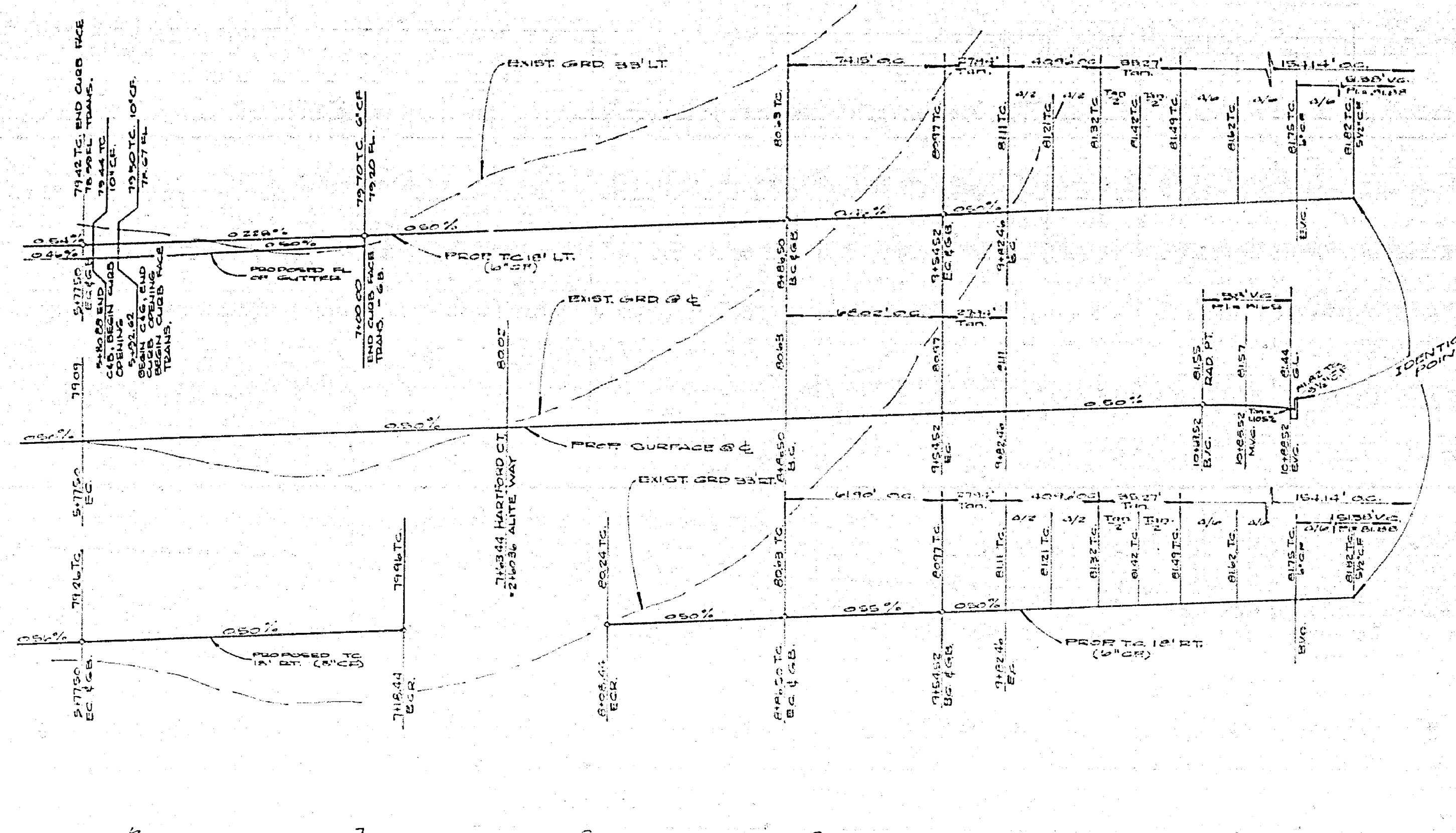
780 ft.

780 Rt.

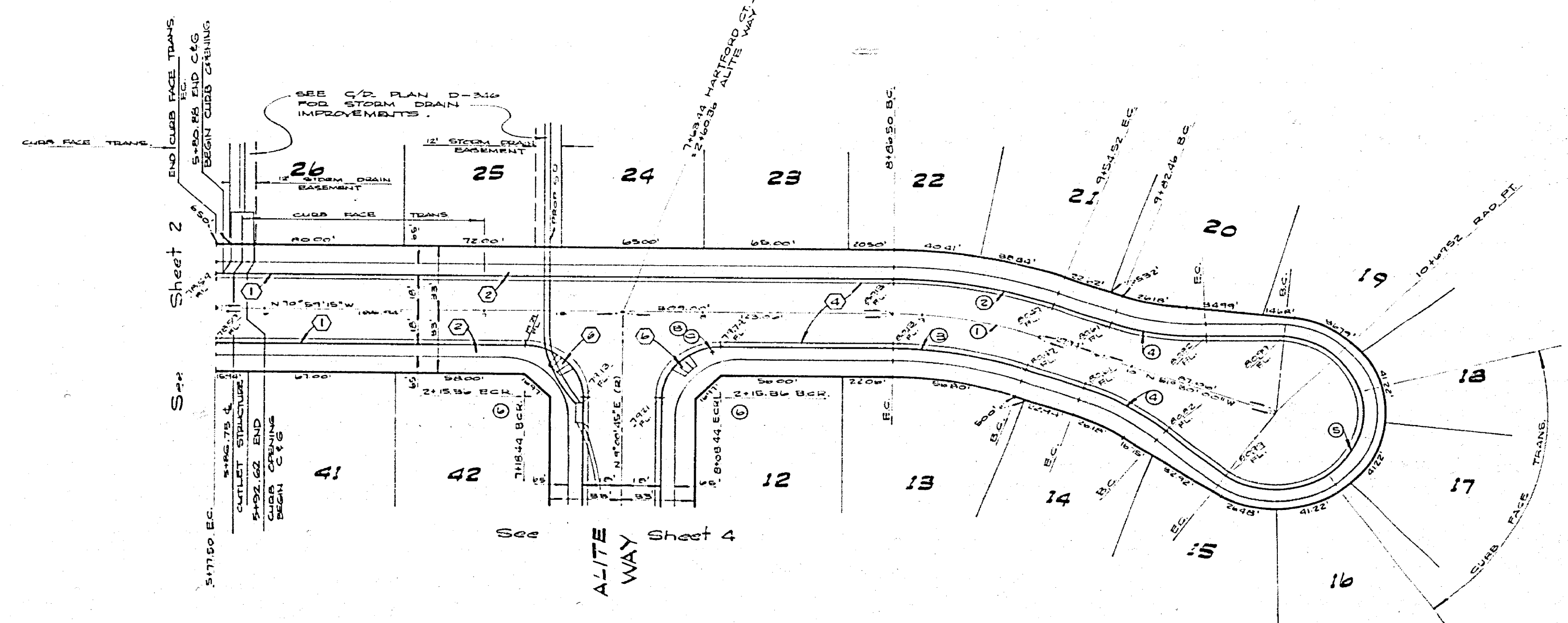
780 Lt.

780 ft.

780 Rt.



NOTE:
ALL FLAGGED ELEVATIONS TO BE STAKED IN THE FIELD BY THE ENGINEER.



CURVE DATA				
No.	Δ	R	L	T
1	17° 29' 15"	200.00'	48.62'	34.41'
2	19° 27' 15"	218.00'	74.15'	37.43'
3	17° 29' 15"	182.00'	41.90'	31.25'
4	20° 23' 27"	115.00'	40.70'	22.63'
5	22° 30' 54"	40.00'	15.14'	—
6	30° 00' 00"	27.00'	4.24'	27.00'

HARTFORD COURT

NOTE: SEE SHEET #1 FOR GENERAL & CONSTRUCTION NOTES

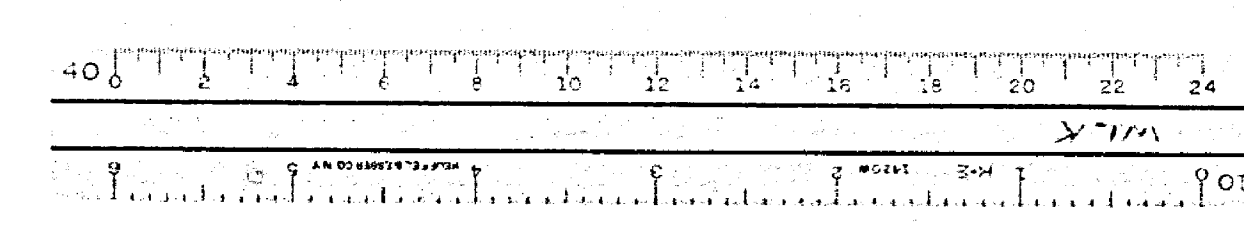
ALBERT A. WEBB ASSOCIATES
CIVIL ENGINEERS
RIVERSIDE, CALIFORNIA
APPROVED BY: *[Signature]* DATE: 11/11/11
R.E. No. 37105

DATE	BY	REVISIONS

CITY OF RIVERSIDE, CALIFORNIA
PUBLIC WORKS DEPARTMENT
APPROVED BY: *[Signature]* DATE: 11/11/11
PRINCIPAL ENGINEER
TRAFFIC DIVISION
CHIEF PUBLIC WORKS ENGINEER

STREET PLAN & PROFILE
TRACT 7503-B
HARTFORD CT.
SCALE HORIZ. 1"=40', VERT. 1"=4'

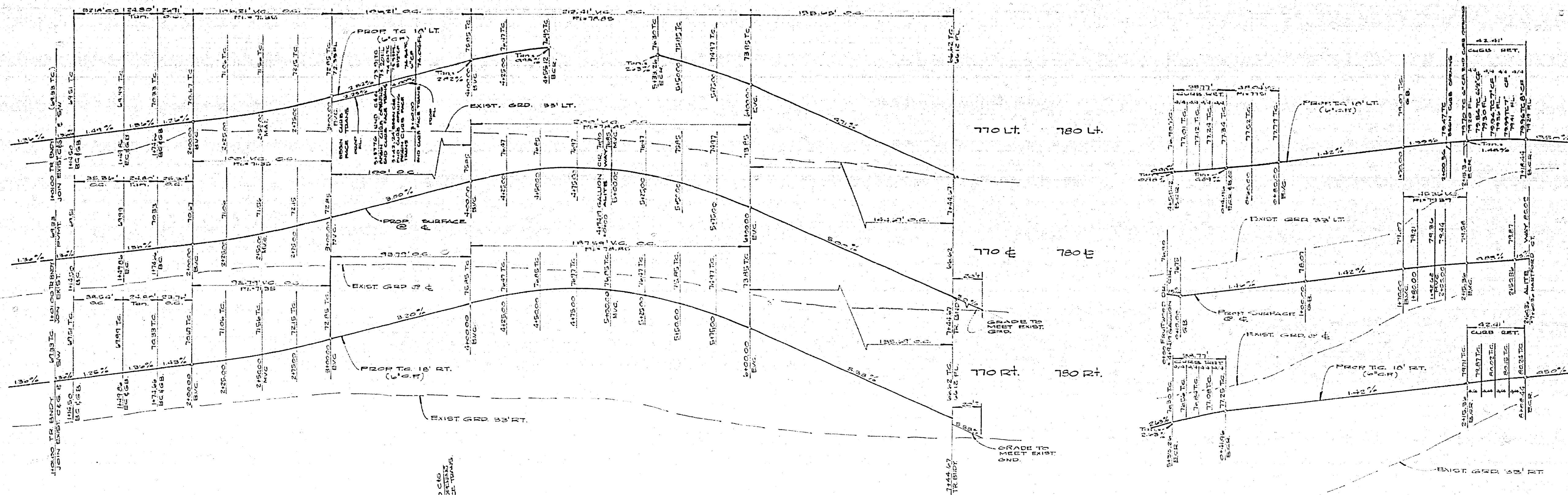
ACCOUNT No.
DRAWING NUMBER
R-2009
SHEET 3 OF 5
76-247A



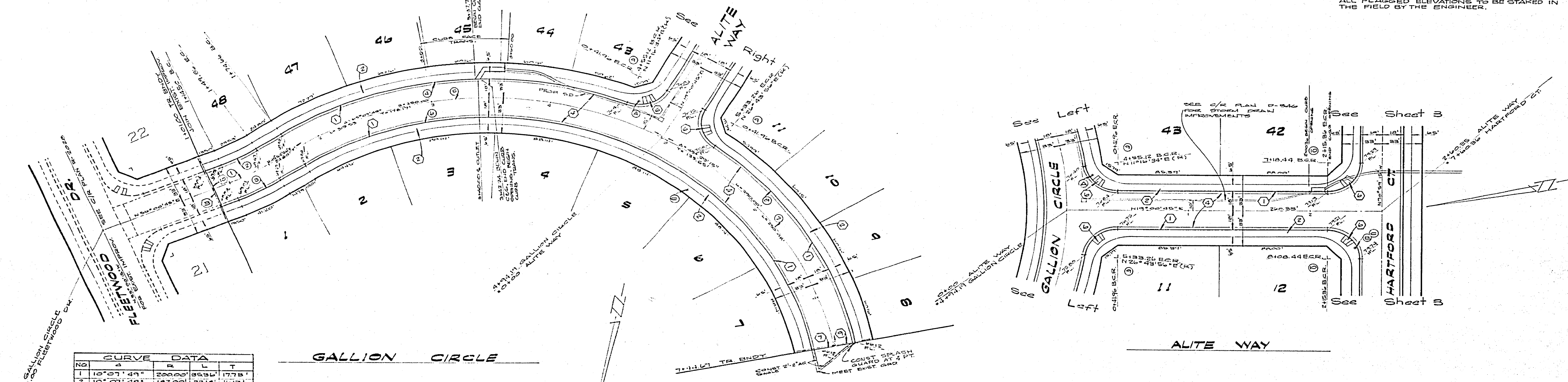
770 Lt.
770 E.
770 Rt.

770 Lt.
780 Lt.
770 E.
780 E.
770 Rt.
780 Rt.

780 Lt.
780 E.
780 Rt.



NOTE:
ALL FLAGGED ELEVATIONS TO BE STAKED IN THE FIELD BY THE ENGINEER.



CURVE DATA			
NO.	ANGLE	RADIUS	CHORD
1	10° 07' 44"	200.00	68.85
2	10° 07' 44"	182.00	62.14
3	10° 07' 44"	218.00	74.32
4	55° 24' 58"	308.00	241.67
5	65° 07' 49"	210.00	345.53
6	112° 37' 04"	275.00	634.13
7	49° 24' 15"	210.00	160.48
8	41° 46' 05"	308.00	224.62
9	82° 10' 49"	270.00	387.71
10	70° 00' 00"	270.00	424.11

NOTE:
SEE SHEET "A" FOR GENERAL & CONSTRUCTION NOTES.

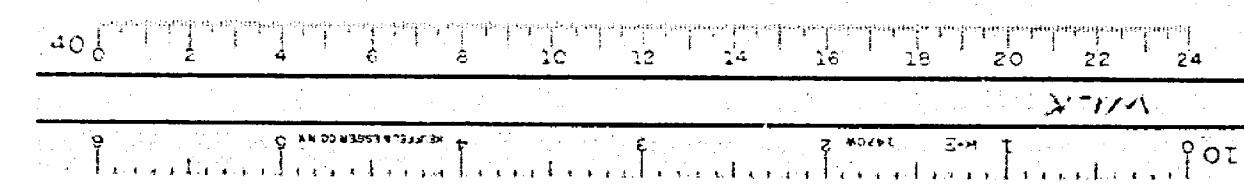
ALBERT A. WEBB ASSOCIATES
CIVIL ENGINEERS
RIVERSIDE, CALIFORNIA
APPROVED BY *[Signature]* DATE *[Date]*
R.E. No. 27105

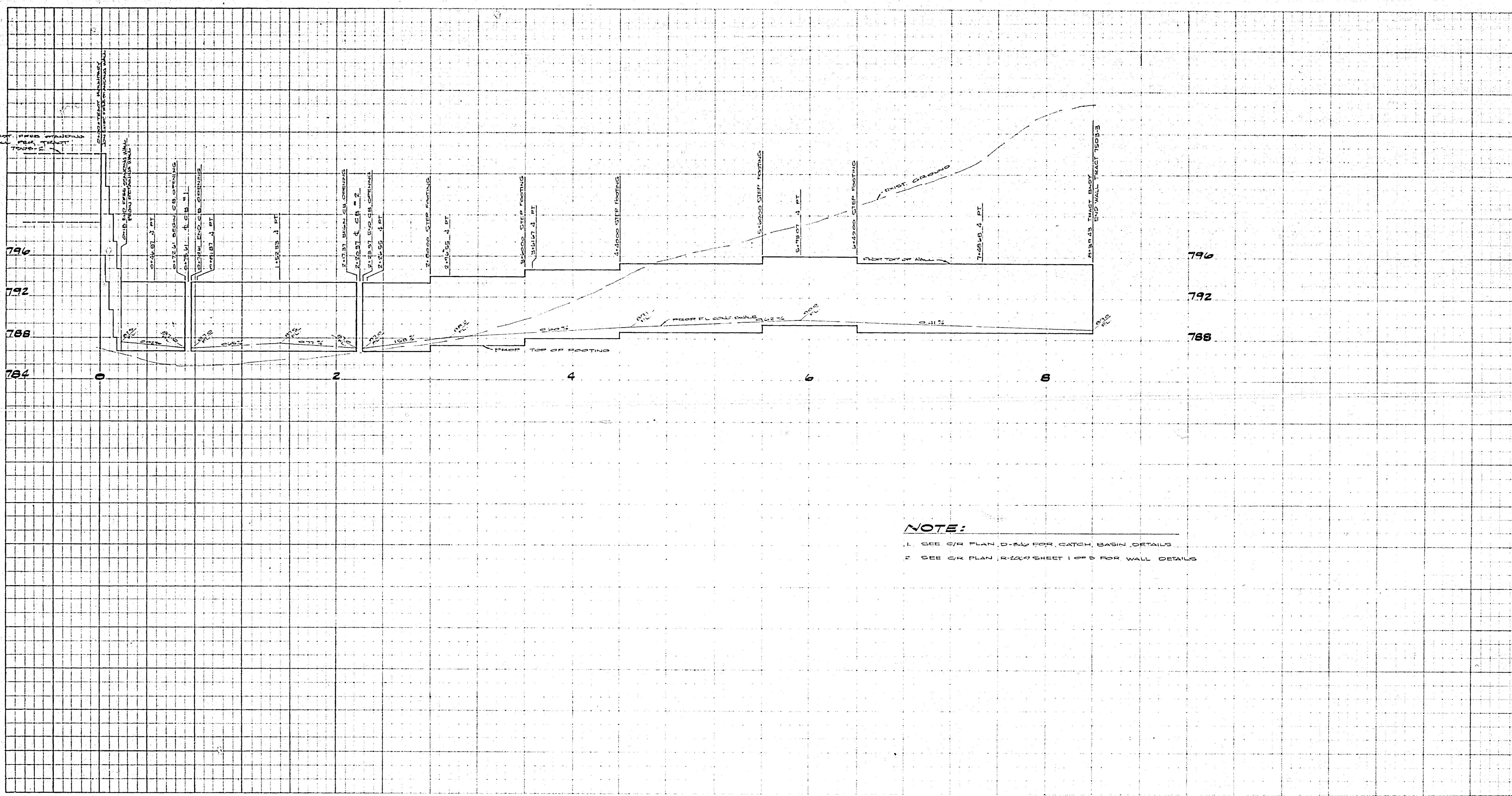
MARK	REVISIONS	APPR.	DATE

CITY OF RIVERSIDE, CALIFORNIA
PUBLIC WORKS DEPARTMENT
APPROVED BY *[Signature]* DATE *[Date]*
PRINCIPAL ENGINEER
TRAFFIC DIVISION
CHIEF PUBLIC WORKS ENGINEER

STREET PLAN & PROFILE
TRACT 7503-3
GALLION CIRCLE
ALITE WAY
SCALE: HORIZ. 1" = 40', VERT. 1" = 4'

ACCOUNT NO.
DRAWING NUMBER
R-2009
SHEET 4 OF 5
76-247 A





NOTE:
 1. SEE C/R PLAN, D-244 FOR CATCH BASIN DETAILS
 2. SEE C/R PLAN, R-224/SHEET 1 OF 5 FOR WALL DETAILS

CITY OF RIVERSIDE
 COUNTY OF RIVERSIDE
 INCORPORATED 1857
Mark Allen 12-30-77
 CHIEF ENGINEER, WATER DEPT.

ALBERT A. WEBB ASSOCIATES
 CIVIL ENGINEERS
 RIVERSIDE, CALIFORNIA
 APPROVED BY *R. F. N. D.* DATE 12/3/77
 R.E. No. 9876

NO.	REVISIONS	DATE

CITY OF RIVERSIDE, CALIFORNIA
 PUBLIC WORKS DEPARTMENT
 APPROVED BY *[Signature]* DATE 12/3/77
 PRINCIPAL ENGINEER
 PARK DEPARTMENT
 TRAFFIC DIVISION
 CHIEF PUBLIC WORKS ENGINEER

WALL PLAN & PROFILE
TRACT 7503-3
WALL PLAN
 SCALE: HORIZ. 1"=40', VERT. 1"=4'

ACCOUNT NO.
 DRAWING NUMBER
R-2069
 SHEET 5 OF 5

