

INCORPORATED 1882

RIVERSIDE CITY OF RIVERSIDE CALIFORNIA

PUBLIC WORKS DEPARTMENT
CHICAGO AVENUE EXTENSION
AT A.T. & S.F. RY./MARLBOROUGH
(INCLUDING MARLBOROUGH REALIGNMENT AND SIDEWALK)

CONSTRUCTION LEGEND

—+—+—+—	CENTER LINE	—+—+—+—	RIGHT-OF-WAY LINE	—+—+—+—	SUBDIVISION LOT LINE
	REMOVE .4C		0.75' A.C.		0.35' A.C. OVER 100' BASE MATERIAL.
	0.30' A.C. (MISC. AREAS)		GRADE AS DIRECTED BY ENGINEER		OVERLAY .4C
	TRANSPLANT PALM TREE		.51' A.C. OVER 100' BASE MATERIAL.		6" THICK CONCRETE (DRIVEWAYS ON SHEET 4)

SPECIFIC CONSTRUCTION NOTES

NUMBERS ABOVE 100 IN A HEXAGON ON THE PLAN REFER TO THE RESPECTIVE STANDARD DRAWING AND SHALL BE CONSTRUCTED ACCORDINGLY, UNLESS MODIFICATIONS ARE NOTED ON THE PLAN OR COVER SHEET BELOW. ANY NUMBER SHOWN BELOW THE STANDARD DRAWING NUMBER INDICATES THE SPECIFIC ALTERNATE TO BE CONSTRUCTED.

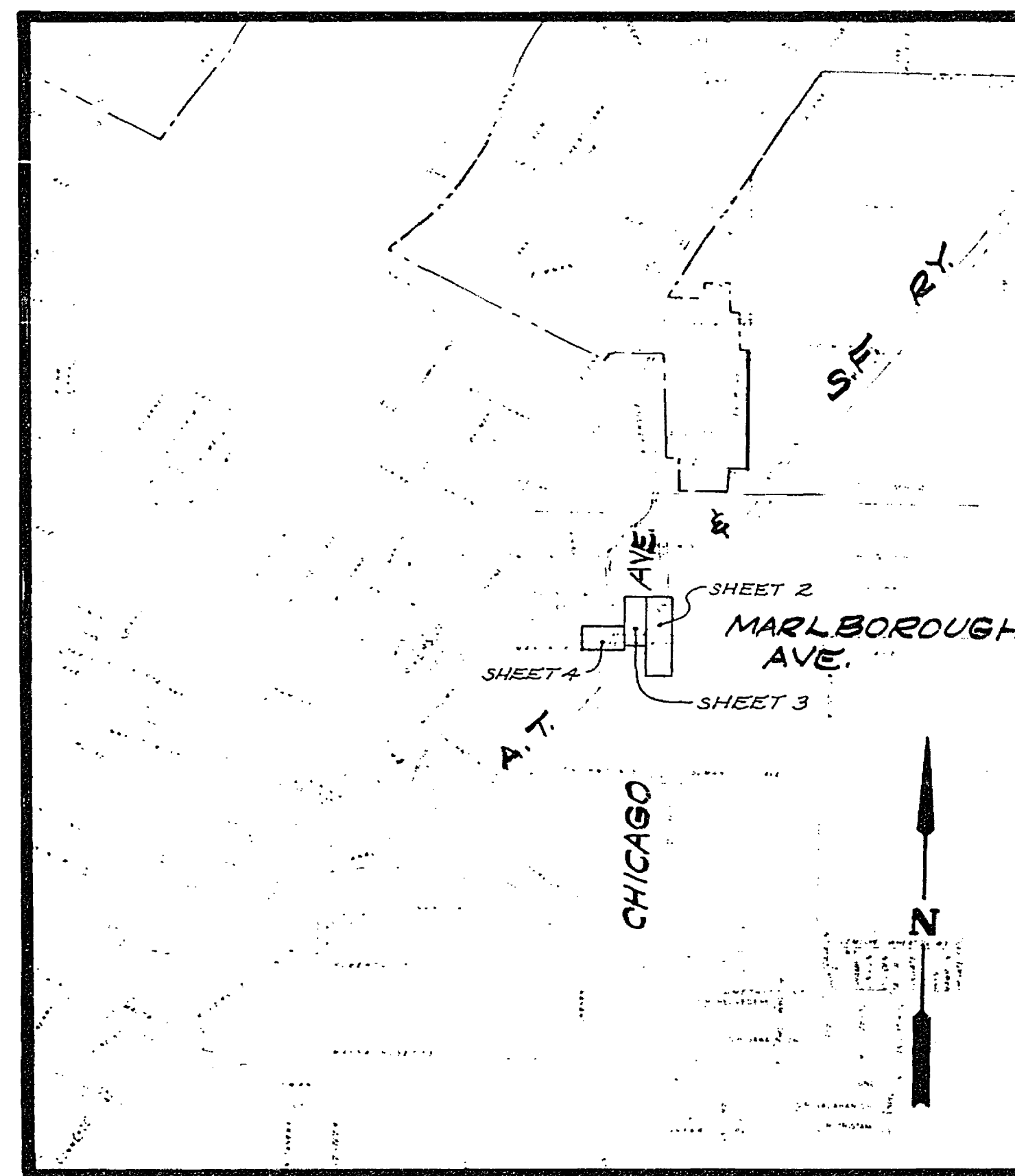
- 8 1/4" TAPER, MODIFY STD. 8" 90' TAPER.
- 9 1/2" FLARE, LAYOUT AT 15.5' INTERVALS.
- 4' WIDE RAMP OF AC, 0.30 THICK.
- PROVIDE 24" x 24" CLEAR OPENING FRAME AND GRATE. RIVERSIDE FOUNDRY NO. R-2010 OR APPROVED EQUAL. B' SHALL NOT BE REQUIRED. ADJUST LOCATION LATERALLY TO AVOID DISTURBING FENCE.

GENERAL CONSTRUCTION NOTES

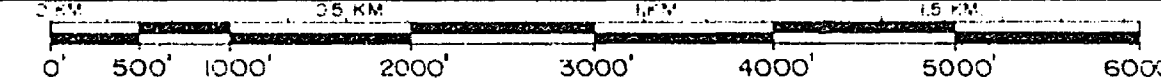
- 1 ELEVS. IN PARENTHESES ARE EXISTING.
- 2 EMBANKMENT SLOPES 2:1 OR FLATTER.
- 3 REMOVE ALL AC BERMS AND ISLANDS WITHIN PROJECT LIMITS.
- 4 PAVEMENT SURFACE SHALL HAVE STRAIGHT GRADES BETWEEN PROFILE LINES.
- 5 CONFLICTING UTILITIES SHOWN WITHIN CONSTRUCTION AREA WILL BE RELOCATED PRIOR TO CONSTRUCTION.
- 6 RIGHTS OF ENTRY HAVE BEEN OBTAINED FOR WORK SHOWN ON PRIVATE PROPERTY.
- 7 REFER TO THE SIGN TABLE AND SPECIAL SIGN DETAILS IN SPECIAL PROVISIONS SECTION OF THE "TRAFFIC SIGNS" FOR NEW SIGNS AND DISPOSITION OF EXISTING SIGNS.

EXISTING UNDERGROUND & TOPOGRAPHY LEGEND

EXISTING UNDERGROUND UTILITIES:			
SANITARY SEWER	8" S	TELEPHONE CONDUIT	T
WATER LINE	6" W	ELECTRICAL CONDUIT	E
STORM DRAIN	24" S.D.	STREET LIGHTING	SL
GAS LINE	4" G	TRAFFIC SIGNAL	SIG
IRRIGATION LINE	20" IRR	FIRE ALARM	F
ABANDONED UTILITY	6" (ABAND)		
EXISTING TOPOGRAPHY:			
—+—+—+—	BLOCK WALL	—+—+—+—	TOP OF SLOPE
—+—+—+—	BOARD FENCE	—+—+—+—	TOE OF SLOPE
—+—+—+—	WIRE FENCE	—+—+—+—	DIRECTION OF FLOW
—+—+—+—	CHAIN LINK FENCE		
	SANITARY SEWER MH		POLE & GUY ANCHOR
	SANITARY SEWER CLEANOUT		ELECTRIC POLE
	STORM DRAIN MH		TELEPHONE POLE
	IRRIGATION WEIR		JOINT USE POLE
	WATER MH		PULL BOX
	GAS MH		TRAFFIC SIGN
	ELECTRIC MH		PARKING METR
	TELEPHONE MH OR VAULT		FIRE ALARM BOX
	WATER METER		STREET NAME SIGN
	FIRE HYDRANT		GAS METER
	SPRINKLER HEAD		MAIL BOX
	VALVE		FAUCET
	AIR VALVE		TELEPHONE RISER
	AIR VENT		WHEEL STOP
			AC BEAM
			STEEL POST
			WOOD POST
	CONCRETE		PEDESTRIAN PUSH BUTTON
	ASPHALT		RAILROAD TRACKS
	EDGE OF PAVEMENT		RAILROAD SIGNAL
	BUILDING		RAILROAD SIGNAL
	UNDERGROUND STRUCTURE		STREET LIGHT & TRAFFIC SIGNAL ON MAST ARM
	OVERHANGING STRUCTURE		STREET LIGHT (UPRIGHT)
			STREET LIGHT
			TRAFFIC SIGNAL ON MAST ARM
			TRAFFIC SIGNAL CONTROLLER
			TRAFFIC SIGNAL PRESSURE DETECTOR
			TRAFFIC SIGNAL LOOP DETECTOR
			CITRUS TREE
			DECIDUOUS TREE
			PALM TREE
			SHRUBBERY
			TREE STUMP
			EVERGREEN TREE



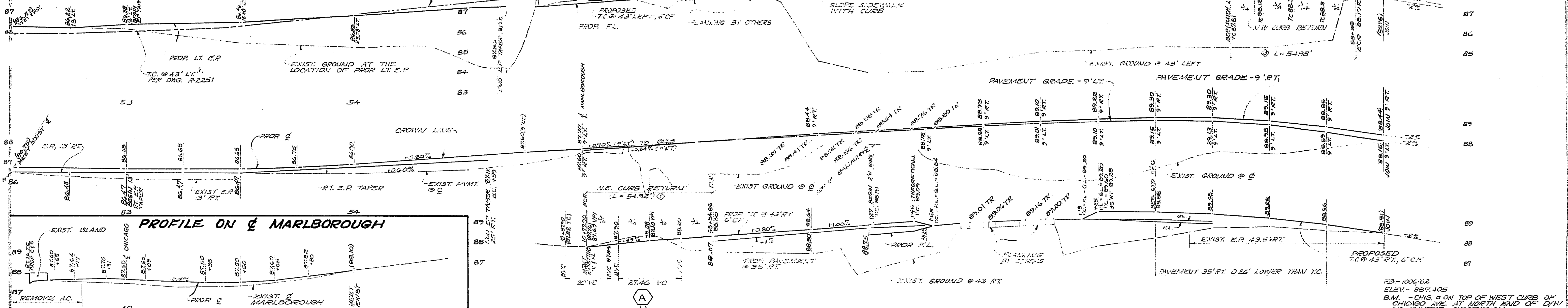
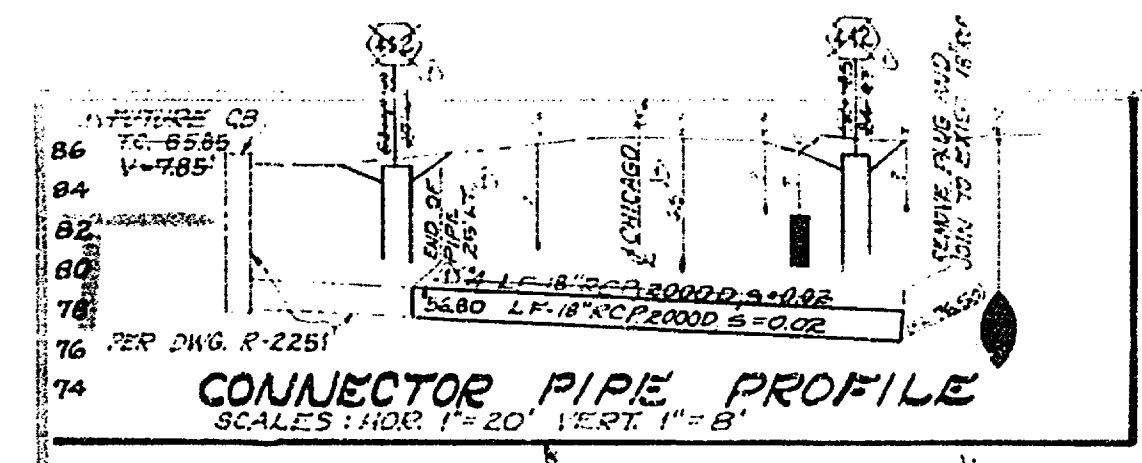
PROJECT LOCATION PLAN



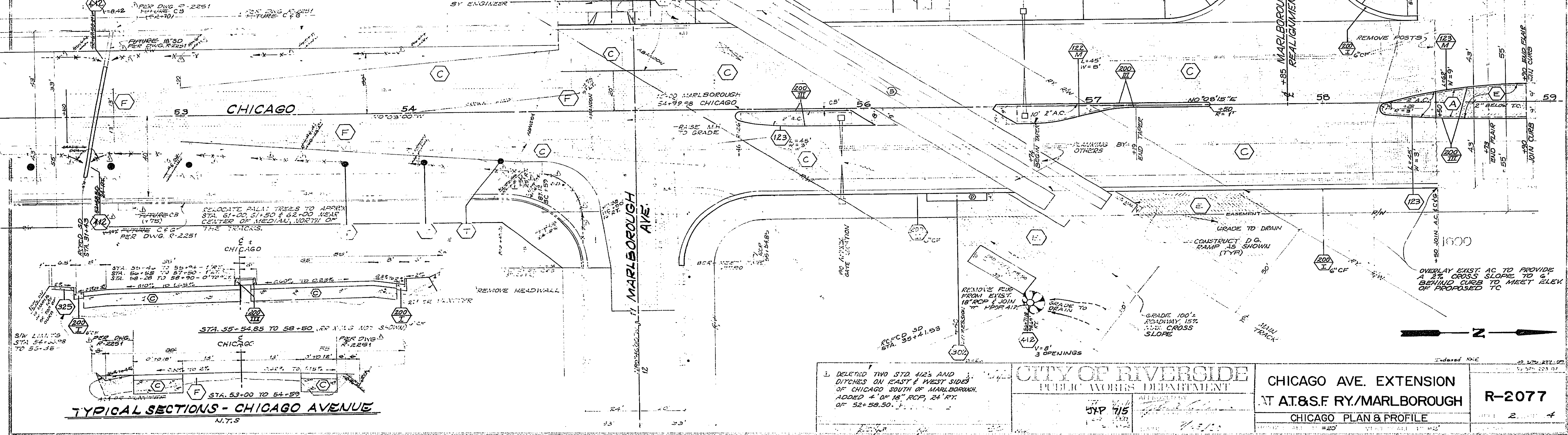
SCALE 1" = 1000'

T. I. = 7.0 ON CHICAGO AVE.
T. I. = 6.0 ON MARLBOROUGH AVE.

CITY OF RIVERSIDE PUBLIC WORKS DEPARTMENT		CHICAGO AVE. EXTENSION AT A.T. & S.F. RY./MARLBOROUGH	ACCOUNT No. 30 970-27729 DRAWING NUMBER R-2077
APPROVED BY: PRINCIPAL ENGINEER PARK DEPARTMENT TRAFFIC DIVISION CHIEF P.W. ENGINEER	DATE: 11/1/20	APPROVED BY: PUBLIC WORKS DIRECTOR	CHECKED BY: SC
DESIGNED BY: [Signature]		DATE: 11/1/20	
DRAWN BY: [Signature]		CHECKED BY: SC	
SHEET 1 OF 4		SHEET 1 OF 4	



CURVE DATA			
INDEX	R	Δ	L
35'	89.7415	34.94'	54.92'
35'	70.7100	32.11'	55.15'
35'	90.0000	35.00'	54.95'



TYPICAL SECTIONS - CHICAGO AVENUE
N.T.S.

DELETED TWO STD. 425 AND DITCHES ON EAST & WEST SIDES OF CHICAGO SOUTH OF MARLBOROUGH. ADDED 4" 18" RCP, 24" R.I. OF 52+58.50.

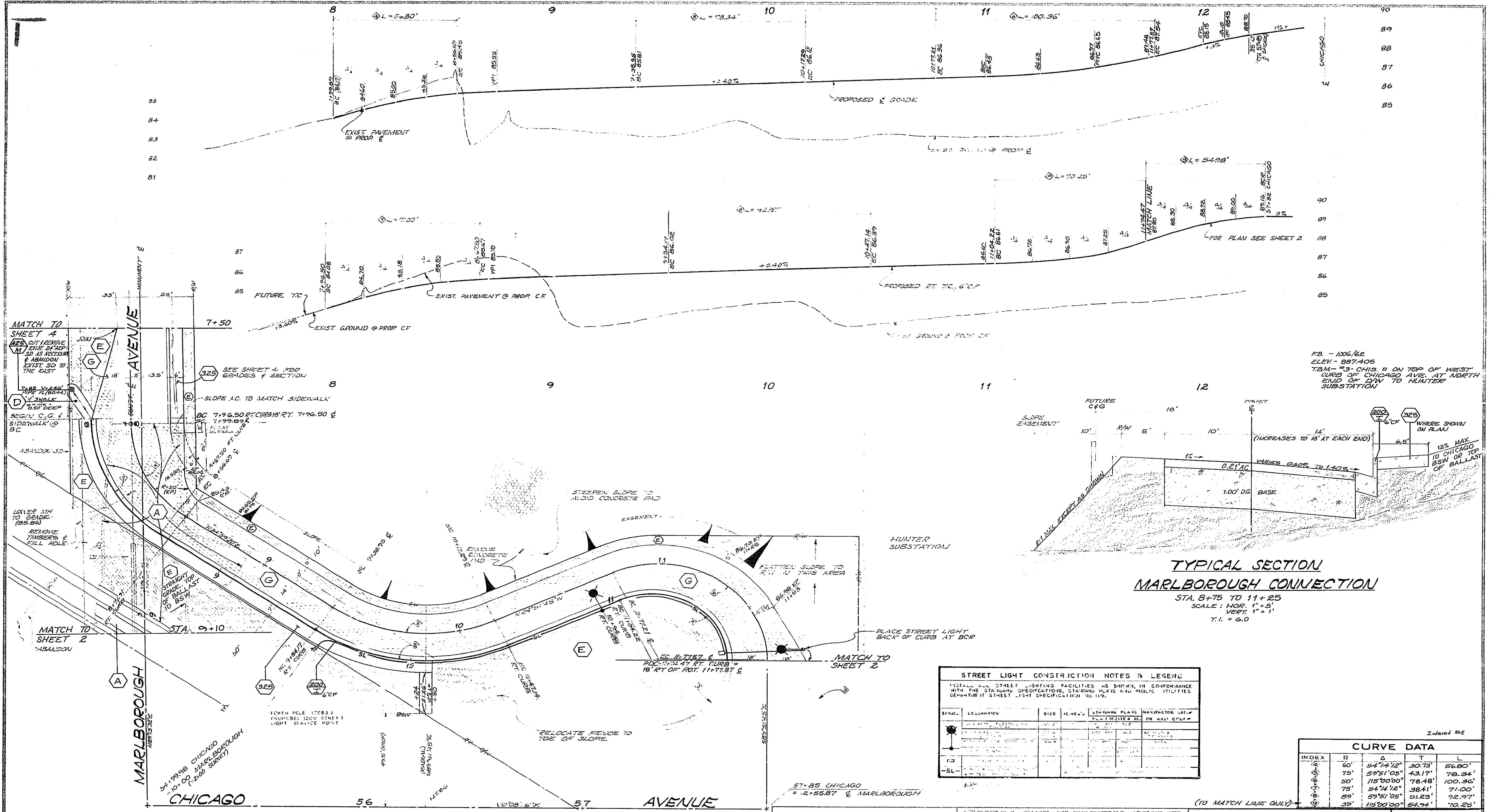
CITY OF RIVERSIDE
PUBLIC WORKS DEPARTMENT

CHICAGO AVE. EXTENSION
AT A.T.&S.F. RY./MARLBOROUGH

CHICAGO PLAN & PROFILE

R-2077

DATE 2.1.4

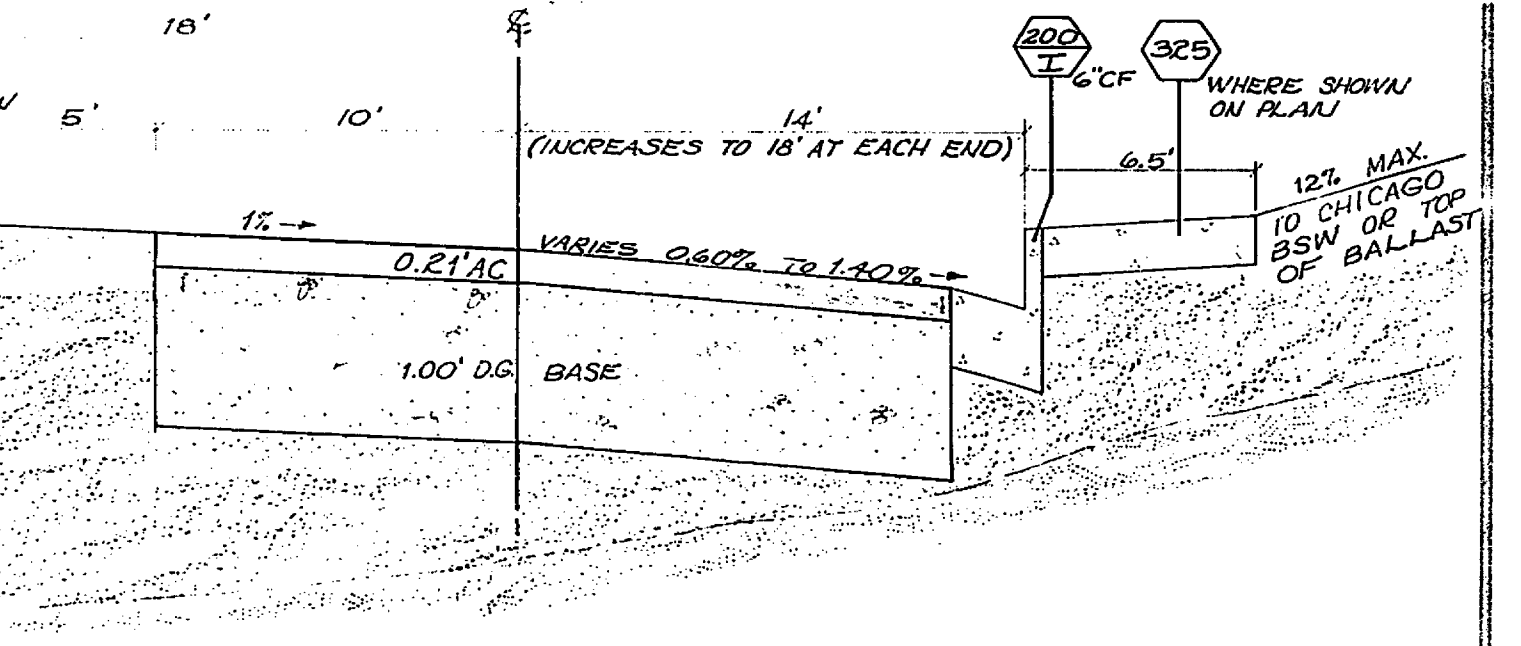


MATCH TO SHEET 4
 CUT LEHMAN
 TYPE R (8044)
 3.50' DEEP
 BEGIN C.G. & SIDEWALK @ BC
 ABANDON SD.
 LOWER 1/4 TO GRADE (85.86)
 REMOVE THUSERS & FILL HOLE
 JOIN

MATCH TO SHEET 2
 ABANDON
 STA. 9+10
 5A1995B CHICAGO
 101' 00" MARLBOROUGH
 SURVEY

NOTE: CURB LINE STATIONING IS INDEPENDENT OF CENTERLINE STATIONING.

FB - 1006/62
 ELEV - 887.405
 TBM - #3 CHIS. B ON TOP OF WEST CURB OF CHICAGO AVE. AT NORTH END OF JOIN TO HUNTER SUBSTATION



TYPICAL SECTION
 MARLBOROUGH CONNECTION
 STA. 8+75 TO 11+25
 SCALE: HOR. 1" = 5'
 VERT. 1" = 1'
 T.I. = 6.0

STREET LIGHT CONSTRUCTION NOTES & LEGEND

INSTALL ALL STREET LIGHTING FACILITIES AS SHOWN IN CONFORMANCE WITH THE STANDARD SPECIFICATIONS, STANDARD PLANS AND PUBLIC UTILITIES DEPARTMENT STREET LIGHT SPECIFICATION NO. 119.

SYMBOL	DESCRIPTION	SIZE	IC. NO.	STANDARD PLANS	MANUFACTURER CAT. NO.
SL	STREET LIGHT	48"	119	PL-119	119
SL-1	STREET LIGHT	48"	119	PL-119	119

INDEXED ONE

CURVE DATA

INDEX	R	Δ	T	L
1	60'	54°14'12"	30.73'	56.80'
2	75'	59°51'05"	43.17'	78.34'
3	50'	115°00'00"	78.48'	100.36'
4	75'	54°14'12"	38.41'	71.00'
5	85'	59°51'05"	51.23'	92.97'
6	35'	115°00'00"	54.74'	70.25'

CITY OF RIVERSIDE
 PUBLIC WORKS DEPARTMENT

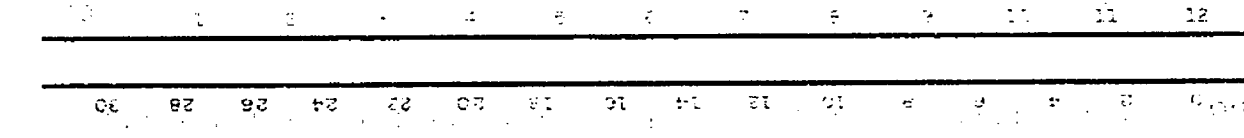
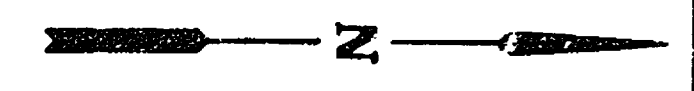
CHICAGO AVE. EXTENSION
 AT AT.&S.F. RY./MARLBOROUGH

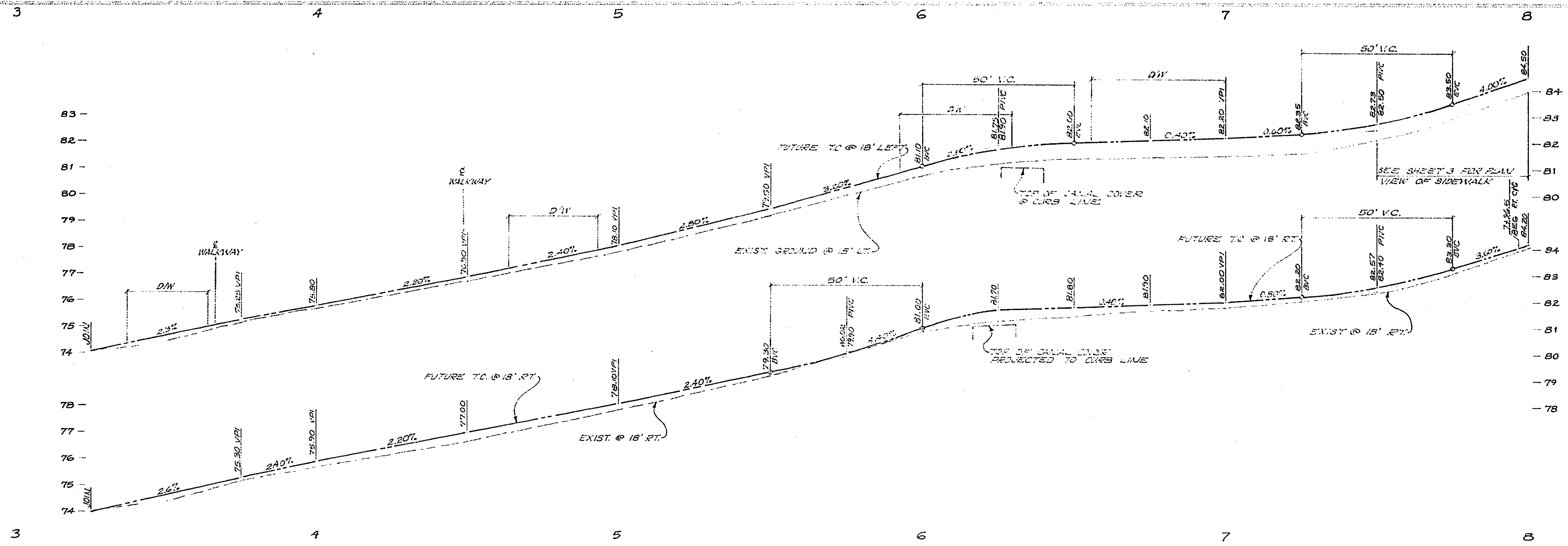
MARBOROUGH REALIGNMENT

R-2077

30-576-277-09

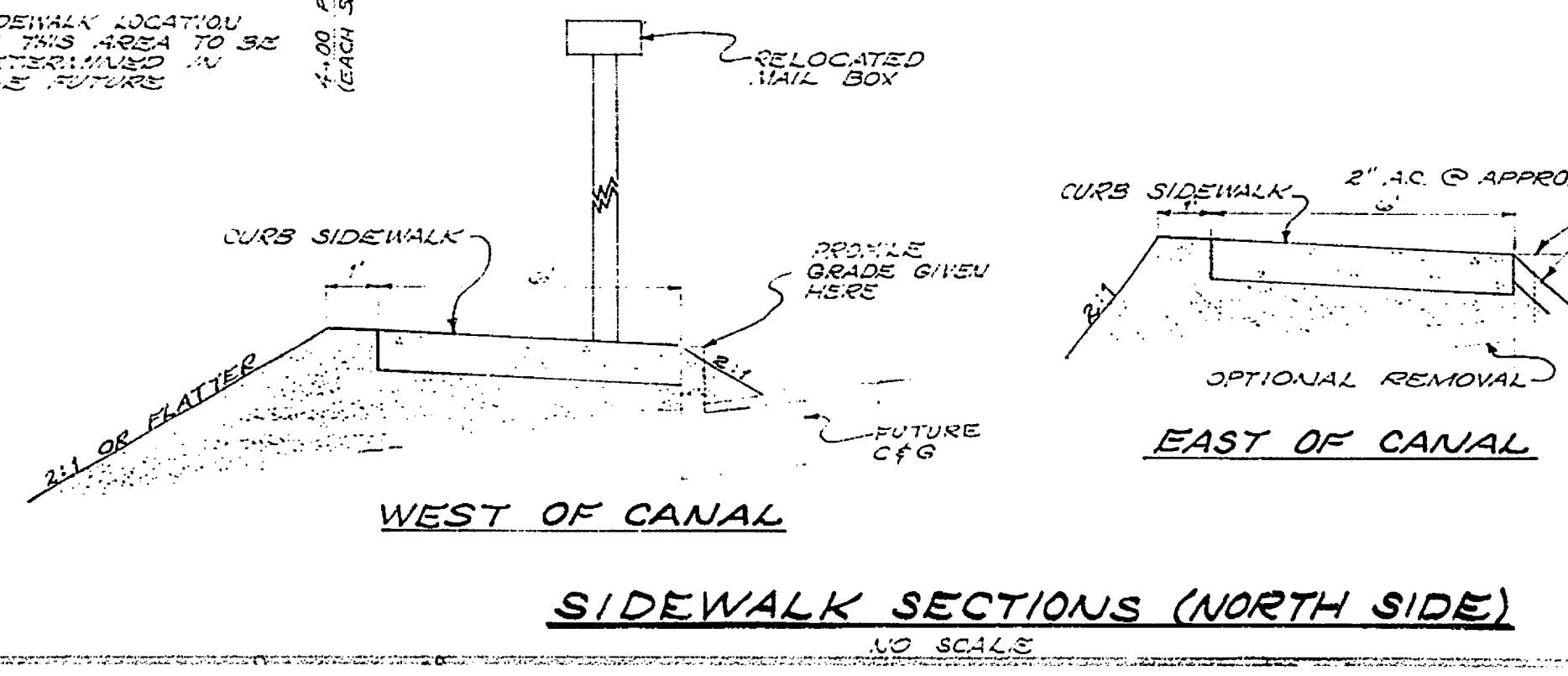
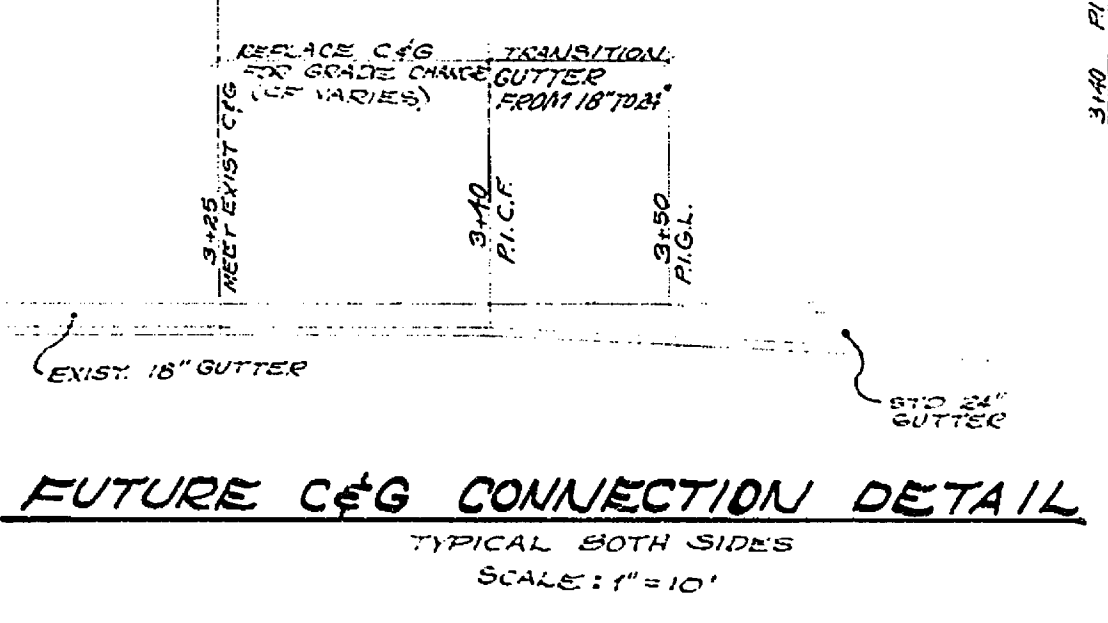
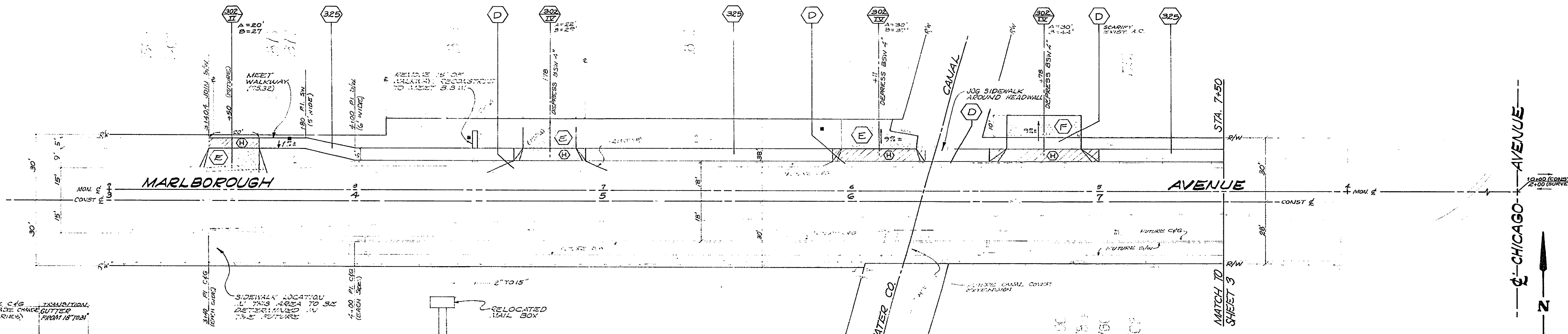
DATE 11/12





SEE SHEET 3 FOR PLAN VIEW OF SIDEWALK

FB - 1006/62
 ELEV - 887+05
 T.B.M #3 - SET CHIS. P ON TOP OF WEST CURB OF CHICAGO AVE. AT NORTH END OF DM TO HUNTER SUBSTATION



- NOTES:
 1. RELOCATE MAIL BOXES AS SHOWN IN DETAIL AT LEFT.
 2. SEE CRFB 1006/17, 18, 19, 63, 78 FOR EXIST. ELEV.

CITY OF RIVERSIDE PUBLIC WORKS DEPARTMENT		CHICAGO AVE. EXTENSION AT AT.&S.F RY./MARLBOROUGH	R-2077
APPROVED: _____ DATE: 10/2/30		SCALE: 1" = 20'	SHEET 4 OF 4

