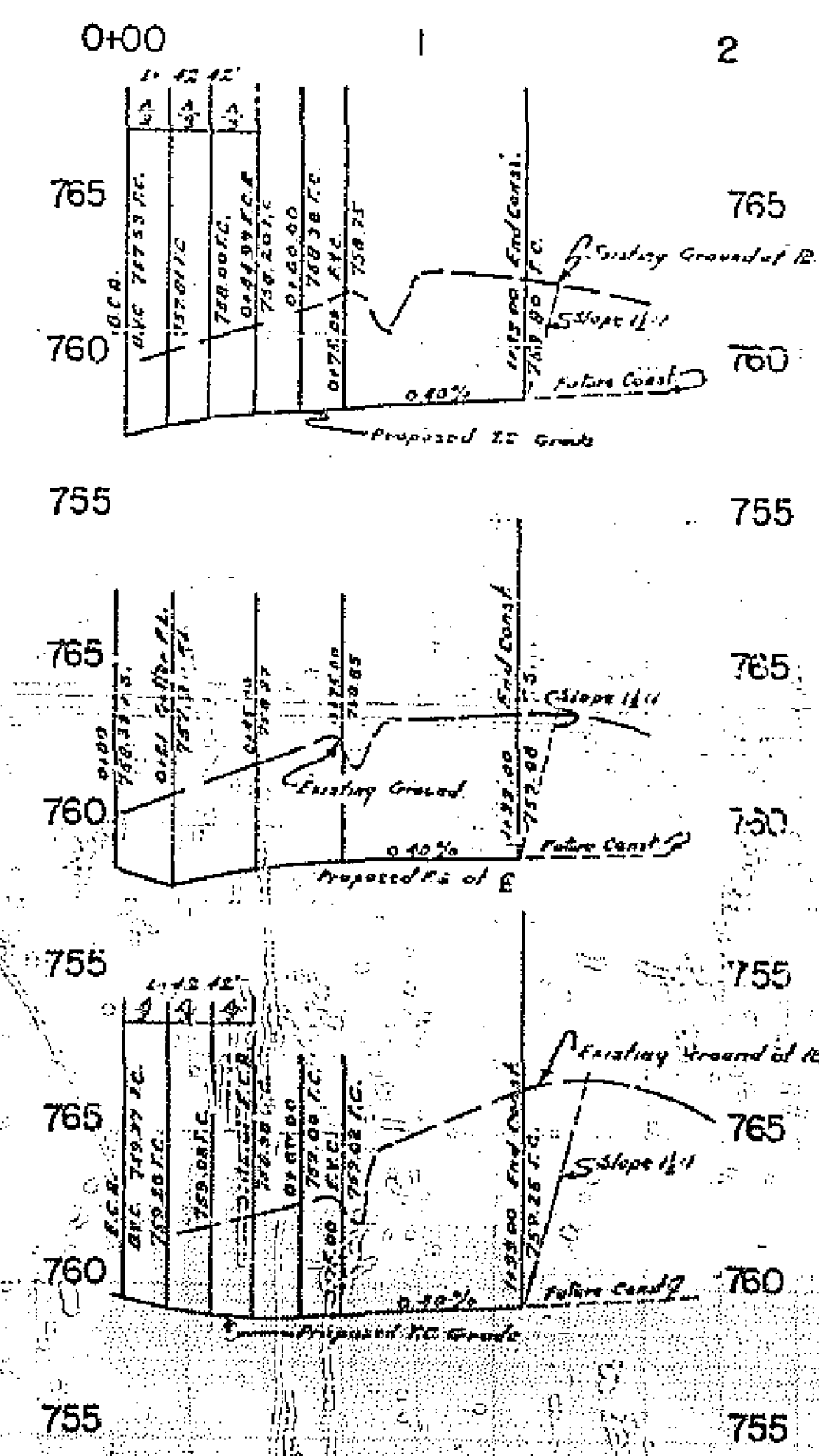
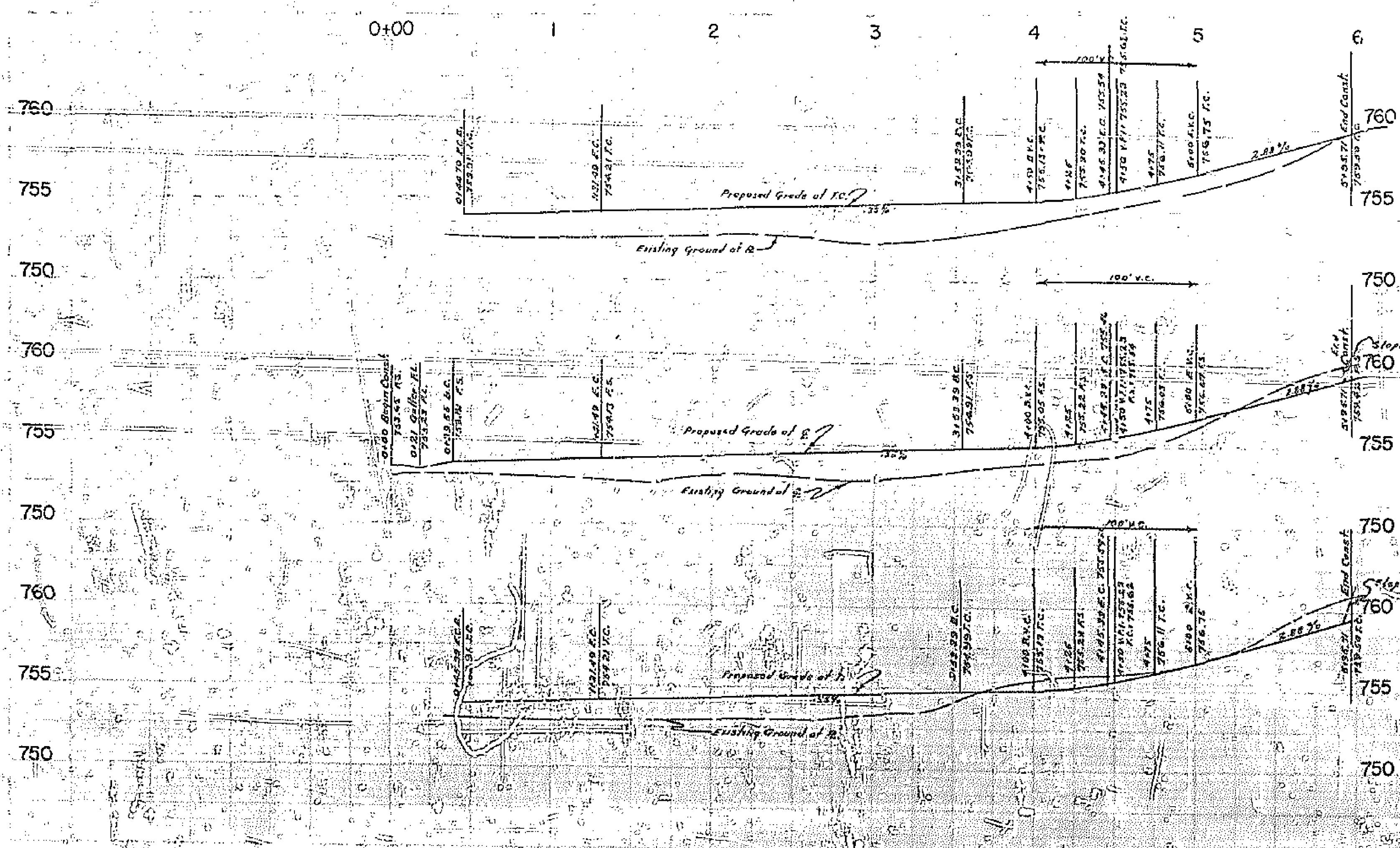
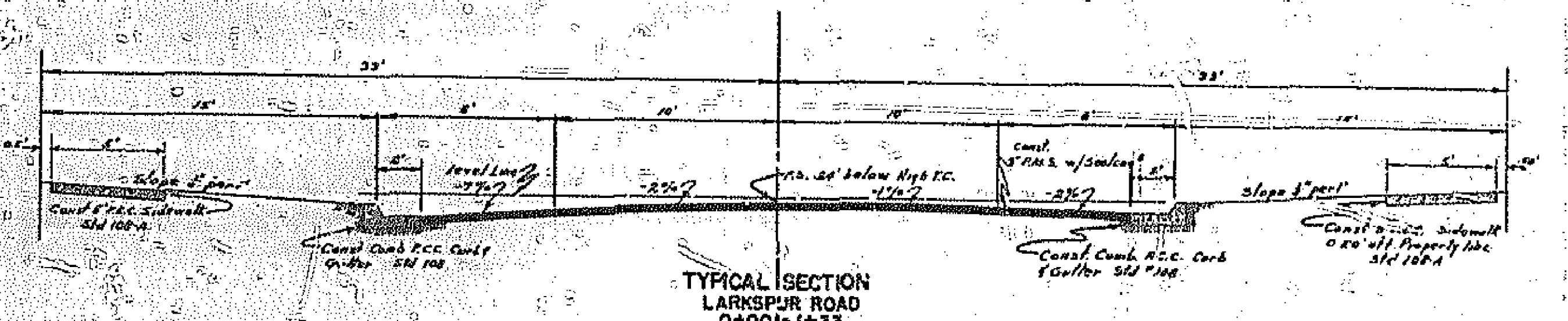
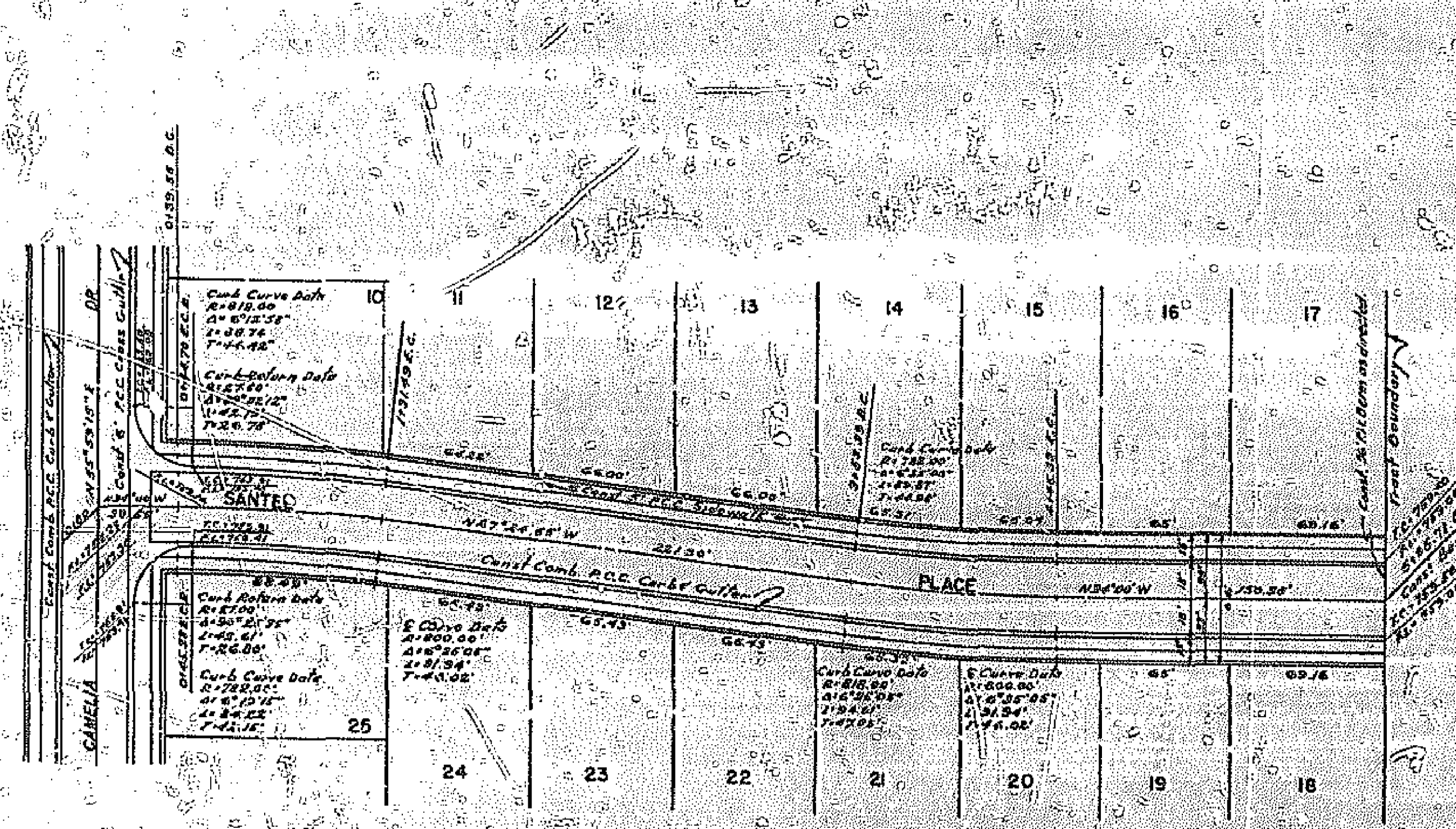


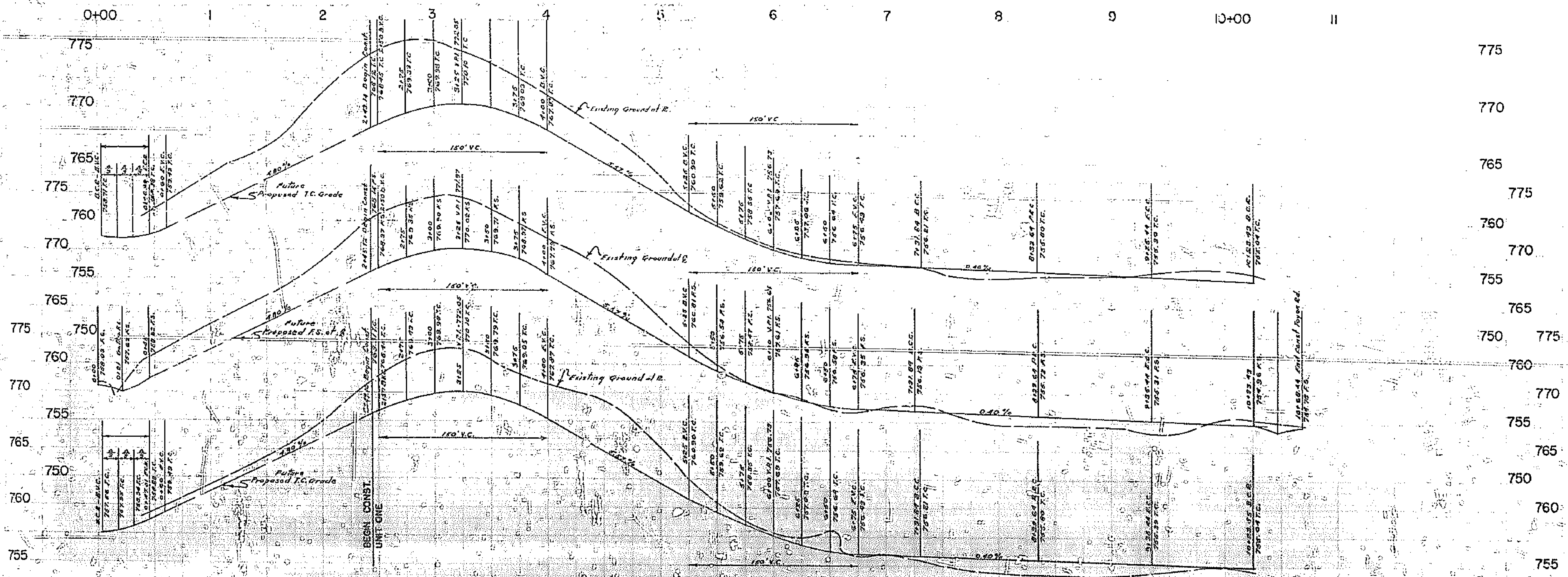
RIVERSIDE ENGINEERING CO. INC.
 RIVERSIDE, CALIFORNIA
 APPROVED *George O. Smith* P.E. DATE *10/15/58*
CITY OF RIVERSIDE, CALIFORNIA
 DEPARTMENT OF PUBLIC WORKS
 HOUSE CONNECTION LOCATIONS & STREET PLAN & PROFILE
 HACREST HOMES UNIT - MONROE STREET
 HORZ. = 1" = 50' SCALE VERT. = 1" = 5'
 APPROVED BY *George O. Smith* NO. **R-208**
 DATE *10/15/58* SHEET *1* OF *1*



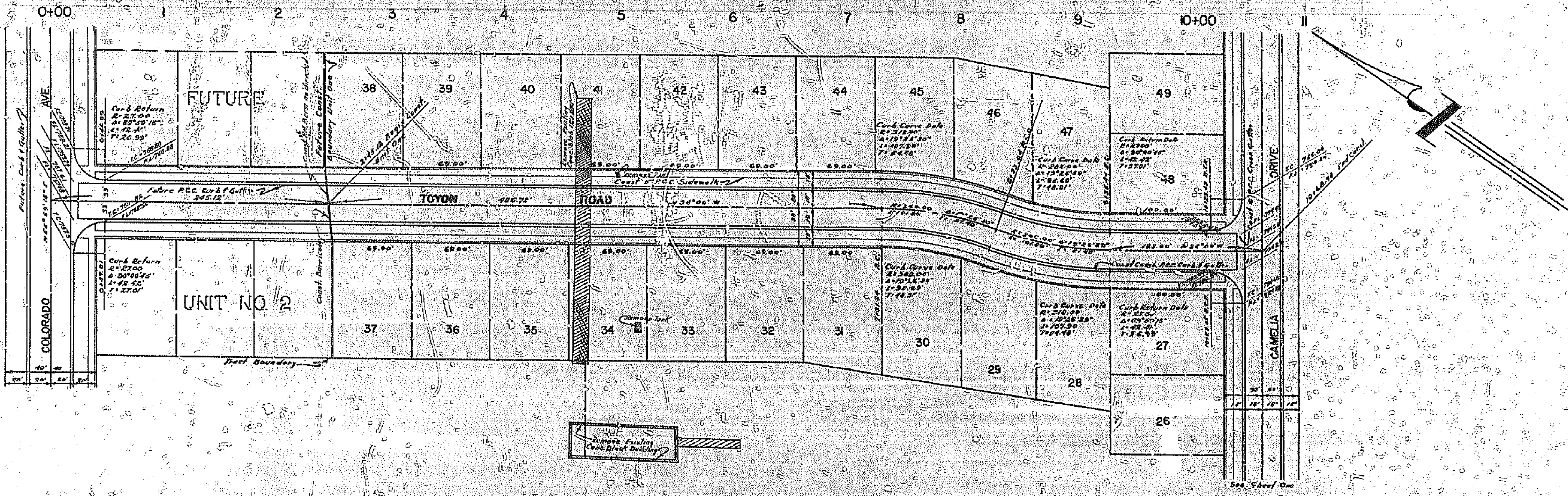
B.M. = P.K. Nail in West Curb of Monroe St
 Colorado 2' North of Curb Return
 ELEV = 750.39



RIVERSIDE ENGINEERING CO. INC.
 RIVERSIDE, CALIFORNIA
 APPROVED *James A. Laffler* R.E. 2155 DATE *7/21/58*
 CITY OF RIVERSIDE, CALIFORNIA
 DEPARTMENT OF PUBLIC WORKS
 HALCREST HOMES UNIT I
 STREET PLAN & PROFILE
 LARKSPUR ROAD — — SANTEE PLACE
 1"=50' HORZ 1"=5' VERT
 APPROVED BY *James A. Laffler* NO. **A-20A**
 DATE *21 July 1958* SHEET 3 OF 4



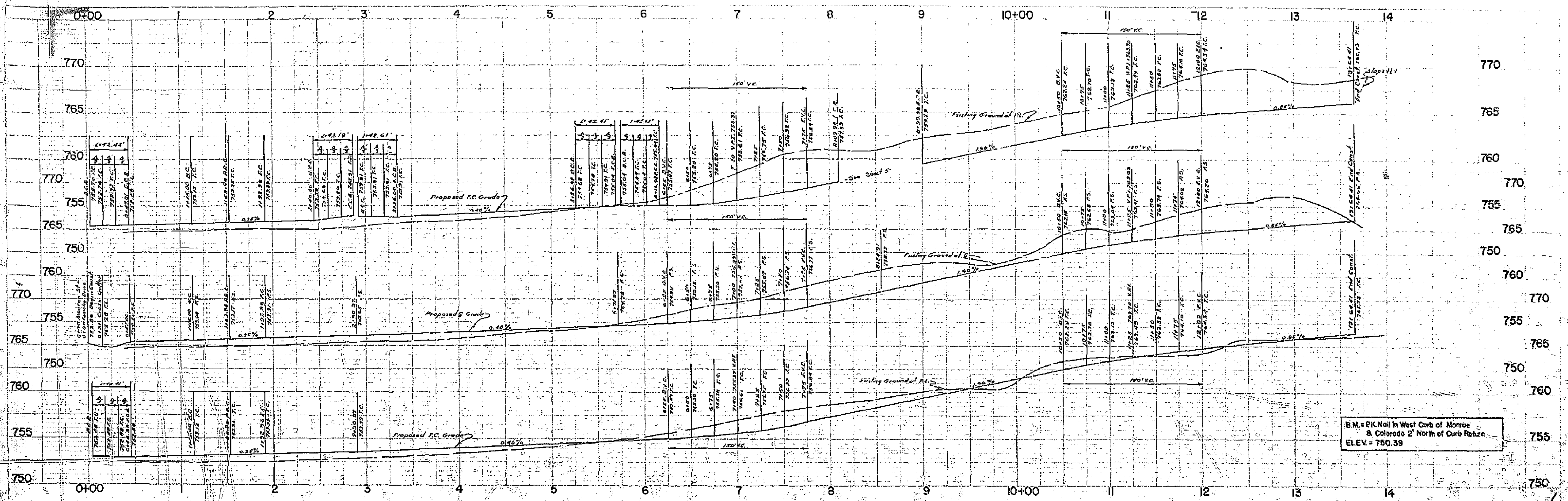
D.M. = P.K. Noll in West Curb
 Monre & Colorado
 2' North of Curb
 Return
 ELEV. #750.39



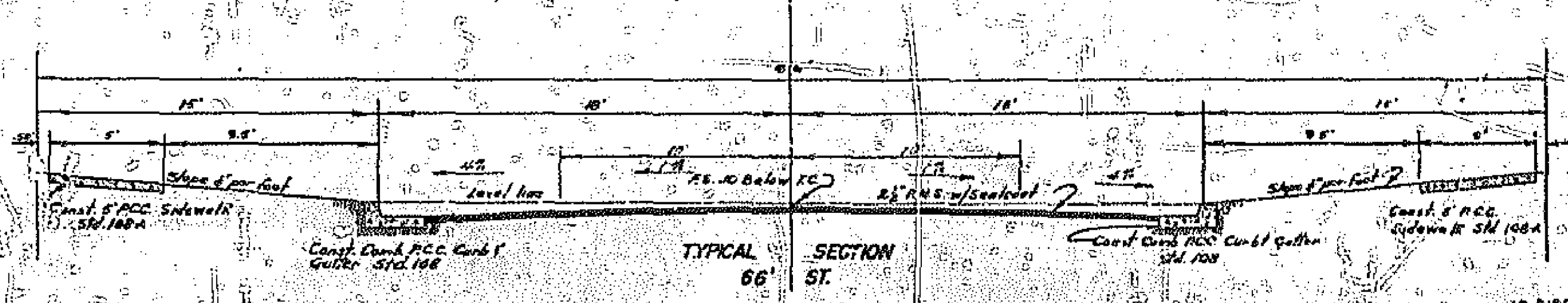
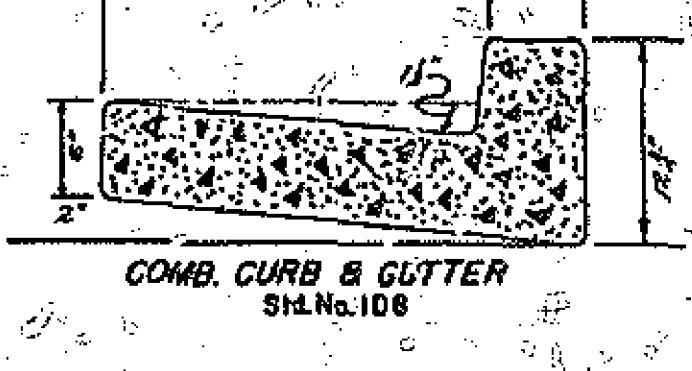
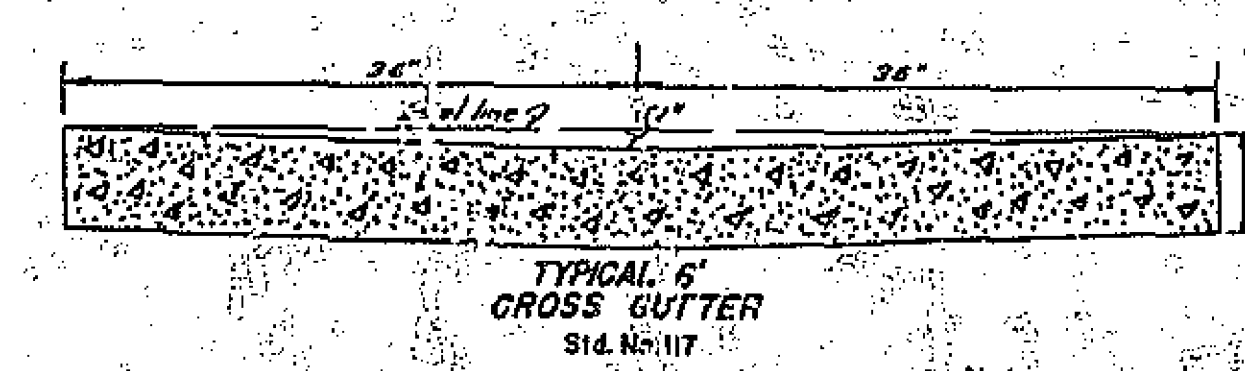
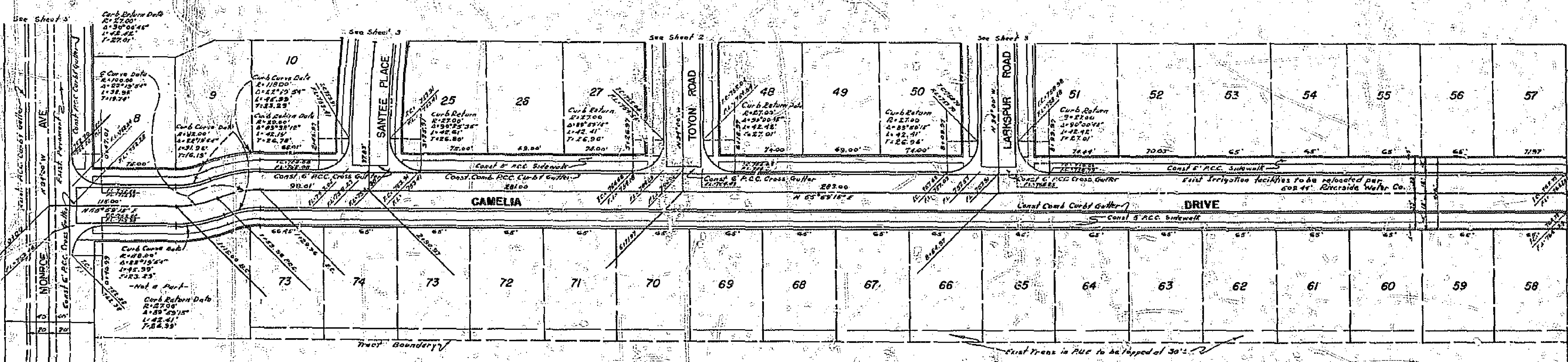
ESTIMATE OF QUANTITIES	
2' P.M.S.	20.476 cu yd
Comb. P.C.C. Curb & Gutter w/6" Face	6,009.63 sq ft
6" P.C.C. Cross Gutters w/Aprons	4
3" P.C.C. Sidewalks 3" Thick	1,002.03 sq ft
Barricades	4
Lot Excavation	18,200 yd ³
Street Excavation	9,700 yd ³

RIVERSIDE ENGINEERING CO. INC.
 RIVERSIDE, CALIFORNIA
 APPROVED BY: *[Signature]* DATE: 7/12/54
CITY OF RIVERSIDE, CALIFORNIA
 DEPARTMENT OF PUBLIC WORKS

STREET PLAN & PROFILE
 HAILEGREST HOMES UNIT I
 -- TOYON ROAD --
 SCALE: HORIZ. 1"=50' VERT. 1"=5'
 APPROVED BY: *[Signature]* NO. **R-208**
 DATE: 7/12/54 SHEET 2 OF 4



B.M. = Pk Nail in West Curb of Monroe & Colorado 2' North of Curb Return. ELEV. = 750.39



Note:
See Sheet 2 For Table of Quantities

Lot Nos. Changed - 8-17-58

RIVERSIDE ENGINEERING CO. INC.
RIVERSIDE, CALIFORNIA

APPROVED BY: [Signature] DATE: [Date]

CITY OF RIVERSIDE, CALIFORNIA
DEPARTMENT OF PUBLIC WORKS

STREET PLAN & PROFILE
HALCREST HOMES UNIT I
— CAMELIA DRIVE —
SCALE
VERT. 1" = 5'
HORIZ. 1" = 50'

APPROVED BY: [Signature] NO. **R-208**

DATE: 7/1/58 SHEET 1 OF 4