

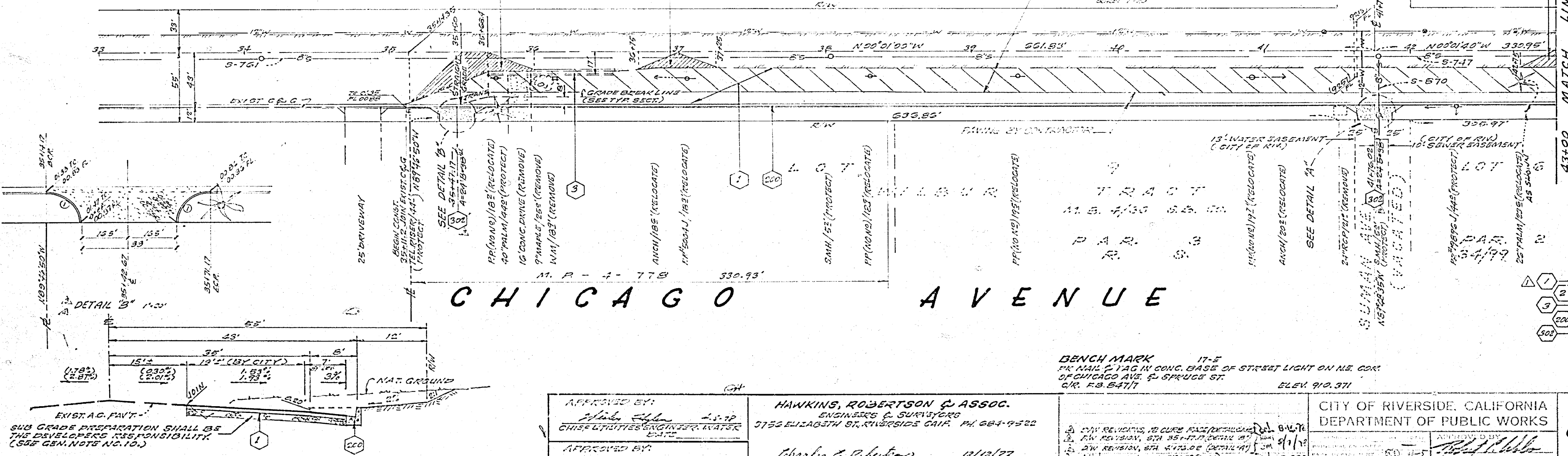
THE PRIVATE ENGINEER SIGNING THESE PLANS IS RESPONSIBLE FOR THE ACCURACY AND ACCEPTABILITY OF THE WORK HEREON. IN THE EVENT OF DISCREPANCIES ARISING DURING CONSTRUCTION, THE PRIVATE ENGINEER SIGNING THESE PLANS SHALL BE RESPONSIBLE FOR OBTAINING AN ACCEPTABLE SOLUTION AND REVISING THE PLANS FOR APPROVAL BY THE CITY.

**GENERAL NOTES**

- IT SHALL BE THE RESPONSIBILITY OF THE CONTRACTOR TO CLEAR THE RIGHT OF WAY IN ACCORDANCE WITH THE PROVISIONS OF LAWS THAT AFFECTS EIGHTH CITY INCLUDING IRRIGATION LINES AND APPLICATIONS AND AT NO COST TO THE CITY.
- CONSTRUCTION SHALL BE IN ACCORDANCE WITH THE CITY OF RIVERSIDE DEPARTMENT OF PUBLIC WORKS STANDARD SPECIFICATIONS AND THE STANDARD SPECIFICATIONS FOR PUBLIC WORKS CONSTRUCTION, 1976 EDITION.
- TECHNICAL EDGES OF EXISTING PAVEMENT WHERE NEW PAVEMENT JOINS TO A SMOOTH STRAIGHT LINE. CONSTRUCT MATCH-UP PAVING AS SHOWN ON PLAN AND OVERLAY PAVING AS DIRECTED IN THE FIELD TO PRODUCE A SMOOTH SECTION. ENGINEER ESTIMATES OVERLAY TO BE 5" THICK.
- CURBS AND CUTTERS SHALL BE STAKED WITH 3' OFFSETS AT 25' INTERVALS.
- CONSTRUCT DRIVEWAY APPROACHES PER STD. DWG. 30E EXACT SIZE AND LOCATION TO BE DETERMINED AT THE TIME OF CONSTRUCTION AS APPROVED BY THE TRAFFIC ENGINEER.
- LOCATION OF LATERALS TO BE DETERMINED IN FIELD AT THE DISCRETION OF THE OWNER, AVOID CONFLICT WITH EXISTING UTILITIES.
- THE SUBDIVIDER SHALL ARRANGE FOR A SOIL TEST TO BE MADE BY A SOIL ENGINEER AFTER THE STREET HAS BEEN PREPARED TO ROUGH GRADE. DEPTH OF BASE MATERIAL AND AC PAVING SHALL BE DETERMINED BY THE CITY OF RIVERSIDE DESIGN STANDARDS AND TEST PROCEDURES.
- ALL FLAGGED ELEVATIONS SHALL BE STAKED IN THE FIELD BY THE PRIVATE ENGINEER.
- CONTACT THE PARK AND RECREATION DEPARTMENT, TREE DIVISION, AT 781-7518, 24 HOURS PRIOR TO REMOVAL OF TREES.
- IN ORDER TO COORDINATE THE CITY'S PORTION OF THE WORK THE DEVELOPER SHALL GIVE THE CITY 15 DAYS NOTICE IN ORDER THAT THE DEVELOPERS AND THE CITY'S WORK MAY BE INSTALLED CONCURRENTLY.

**CONSTRUCTION NOTES**

- CONST. 4" A.C. OVER 4" A.C. (SEE GEN. NOTE #2)
- CONST. VARIABLE THICKNESS A.C. OVERLAY PAVEMENT.
- REMOVE EXIST. CONC. CURBS & CUTTER.
- CONST. CURBS & CUTTER, TYPE I (G.C.P.) PER STD. 200.
- CONST. DRIVEWAY APPROACH PER STD. 30E.

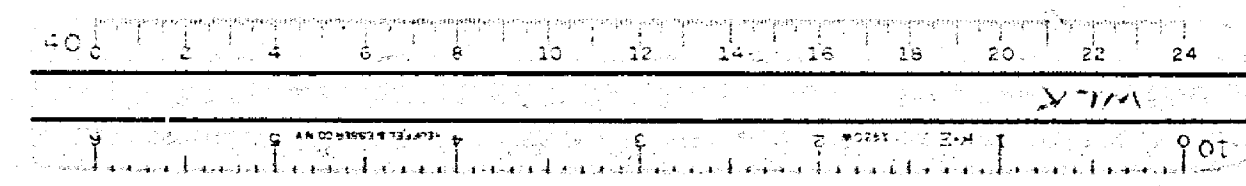


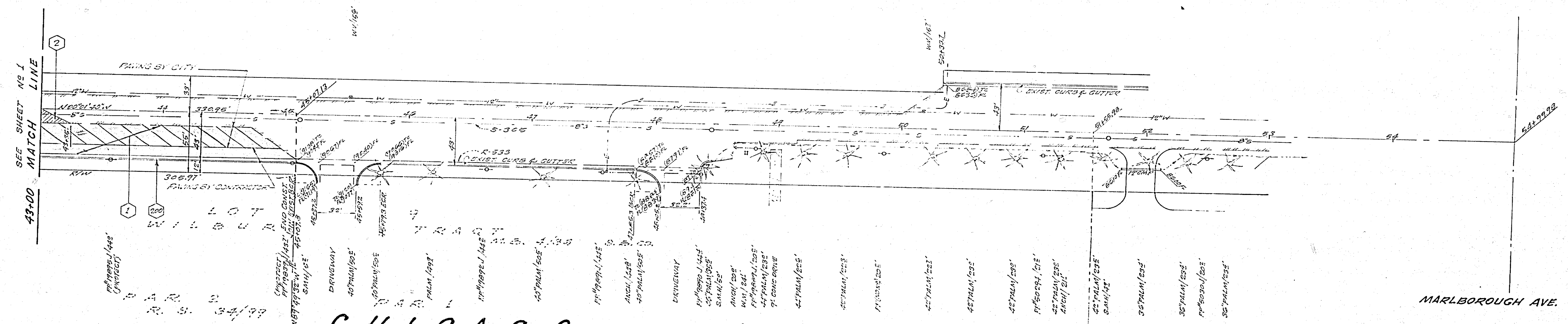
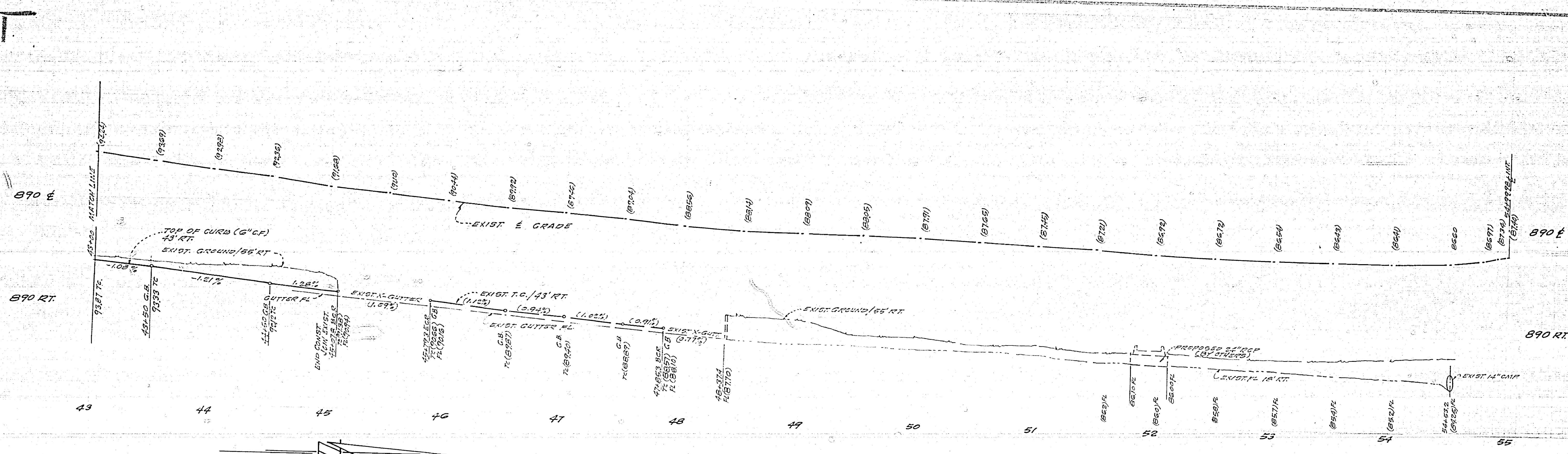
**TYPICAL SECTION - CHICAGO AVENUE 7.1-7**  
SCALE: HORIZ. 1"=10', VERT. 1"=3'

APPROVED BY: *[Signature]* DATE: 12/12/77  
**HAWKINS, ROBERTSON & ASSOC.**  
 ENGINEERS & SURVEYORS  
 5755 ELIZABETH ST., RIVERSIDE, CALIF. PH. 684-9522  
*Charles E. Robertson* DATE: 12/12/77  
 R.C.S. 15015

**BENCH MARK** 17-5  
 17-5 MARK TAG IN CONC. BASE OF STREET LIGHT ON NE CORN  
 OF CHICAGO AVE. & SPRUCE ST. ELEV. 910.371  
 C.R. P.S. 64717

CITY OF RIVERSIDE, CALIFORNIA  
 DEPARTMENT OF PUBLIC WORKS  
 INDEXED, R.R.  
 STREET PLAN & PROFILE  
 EAST SIDE  
**CHICAGO AVENUE**  
 FROM STA. 30+12 TO STA. 45+07.8  
 M.P. - 4-775  
 HORIZ. SCALE: 1" = 40' VERT. SCALE: 1" = 4'  
 PROJECT NO. **R-2090**  
 SHEET **1** OF **2**  
 FILE NO. **77-2811**





- CONSTRUCTION NOTES**
- 1 CONST. "A.C. OVER" "A.B." (SEE GEN. NOTE NO. 7, SHEET 1)
  - 200 CONST. CURB & GUTTER, TYPE I (G.C.P.) PER STD. NE 200.
  - 2 CONST. VARIABLE THICKNESS A.C. OVERLAY PAVEMENT.

**BENCH MARK** 17-E  
 PK. NAIL 6.745 IN CONC. BASE OF STREET LIGHT ON NE COR.  
 OF CHICAGO AVE. & SPRUCE ST.  
 S. 1/2 P. 6-4111 BLEX 912.371

APPROVED BY:  CHARLES E. REDINGTON CIVIL ENGINEER - ELECTRIC DATE: 12/12/77	<b>HAWKINS, ROBERTSON &amp; ASSOC.</b> ENGINEERS & SURVEYORS 3755 ELIZABETH ST., RIVERSIDE CALIF. PH. 684-9822	CITY OF RIVERSIDE, CALIFORNIA DEPARTMENT OF PUBLIC WORKS	INDEXED BR <b>STREET PLAN &amp; PROFILE</b> EAST SIDE <b>CHICAGO AVENUE</b> FROM STA. 35+11.2 TO STA. 45+07.8 M.P. - 4-778	PROJECT NO. <b>R-2090</b> SHEET <b>2</b> OF <b>2</b> FILE NO. <b>77-2611</b>
	DATE: 12/12/77	DATE: 4/25/78	HORIZ. SCALE: 1" = 40' VERT. SCALE: 1" = 4'	

