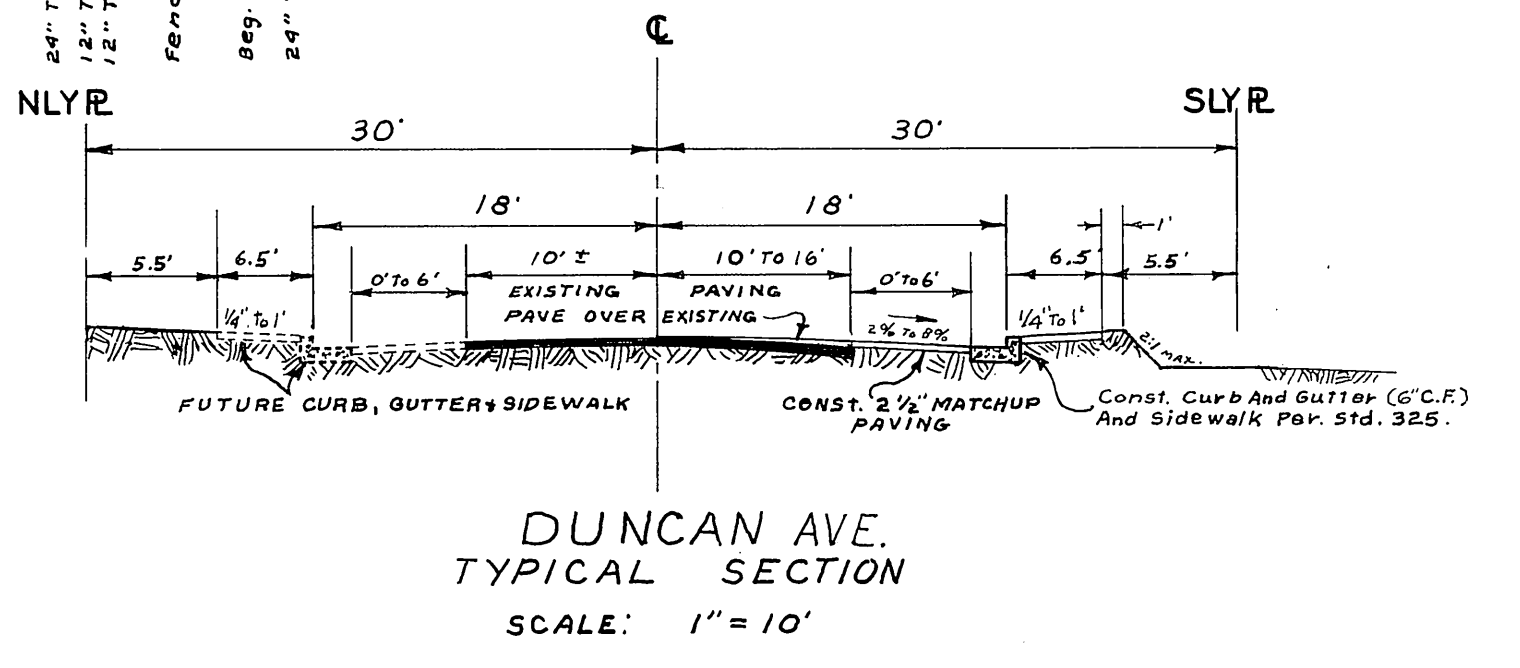
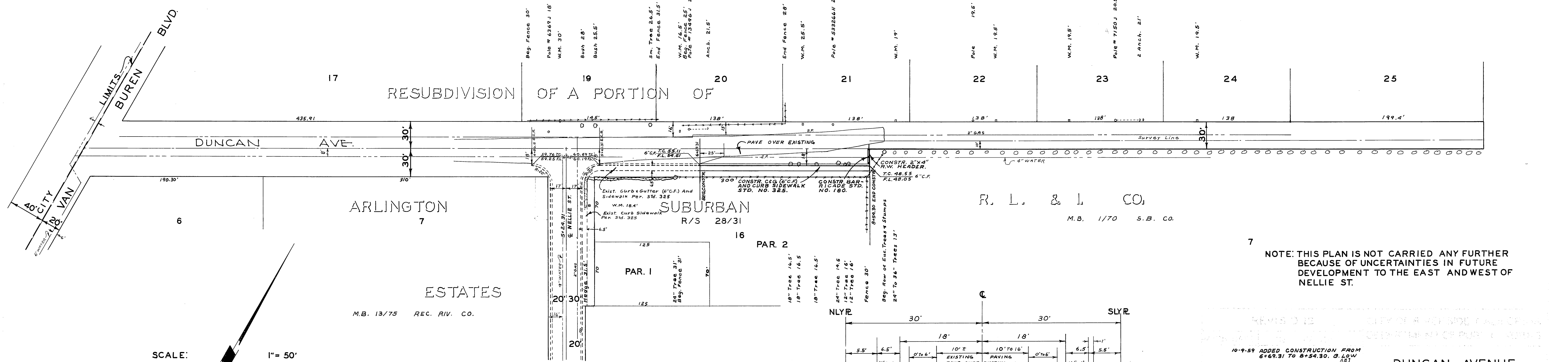


T.B.M. ELEV. 760.510 LD. & TACK IN CENTER OF S.E. CB.
RET. NELLIE & DUNCAN.
B.M. ELEV. 748.37 60D SPK. IN POLE #13716J 620' SLY OF
DUNCAN ON WLY SIDE OF NELLIE ST.
F.B. 64.4 / 3-12
SCALE: HOR. 1" = 50'
VERT. 1" = 5'



NOTE: THIS PLAN IS NOT CARRIED ANY FURTHER
BECAUSE OF UNCERTAINTIES IN FUTURE
DEVELOPMENT TO THE EAST AND WEST OF
NELLIE ST.

SCALE: 1" = 50'

DUNCAN AVE.
TYPICAL SECTION
SCALE: 1" = 10'

REVISIONS
10-9-59 ADDED CONSTRUCTION FROM
6+69.31 TO 8+54.30. @ LOW
1/8"

DUNCAN AVENUE
CURB GUTTER & SIDEWALK
ELY OF VAN BUREN

W.D.G. & B.L. J.L.B.
B. LOW
for William D. Hardner
Aug 19, 1958
INDEXED 1958

R-211

SEE PLAN R-97
FOR NELLIE ST.