


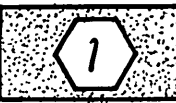
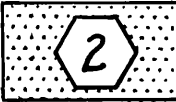
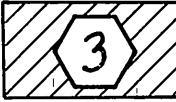


INCORPORATED 1883  
  
**RIVERSIDE CITY OF RIVERSIDE CALIFORNIA**

**PUBLIC WORKS DEPARTMENT**



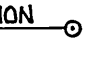

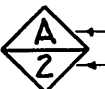
**CITRUS AVENUE AT IOWA**

**CONSTRUCTION LEGEND**

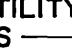


-  CONSTRUCT STRUCTURAL SECTION OF 0.60' ASPHALT CONCRETE OVER NATIVE SOIL.
-  OVERLAY EXISTING A.C. PAVEMENT WITH A VARIABLE THICKNESS OF ASPHALT CONCRETE.
-  REMOVE EXISTING A.C. PAVEMENT AND CONSTRUCT STRUCTURAL SECTION OF 0.60' ASPHALT CONCRETE OVER NATIVE SOIL.
-  CONSTRUCT STRUCTURAL SECTION OF 0.70' ASPHALT CONCRETE OVER NATIVE SOIL.
-  PAVE MEDIAN WITH 0.10' ASPHALT CONCRETE WITH POB SEAL.

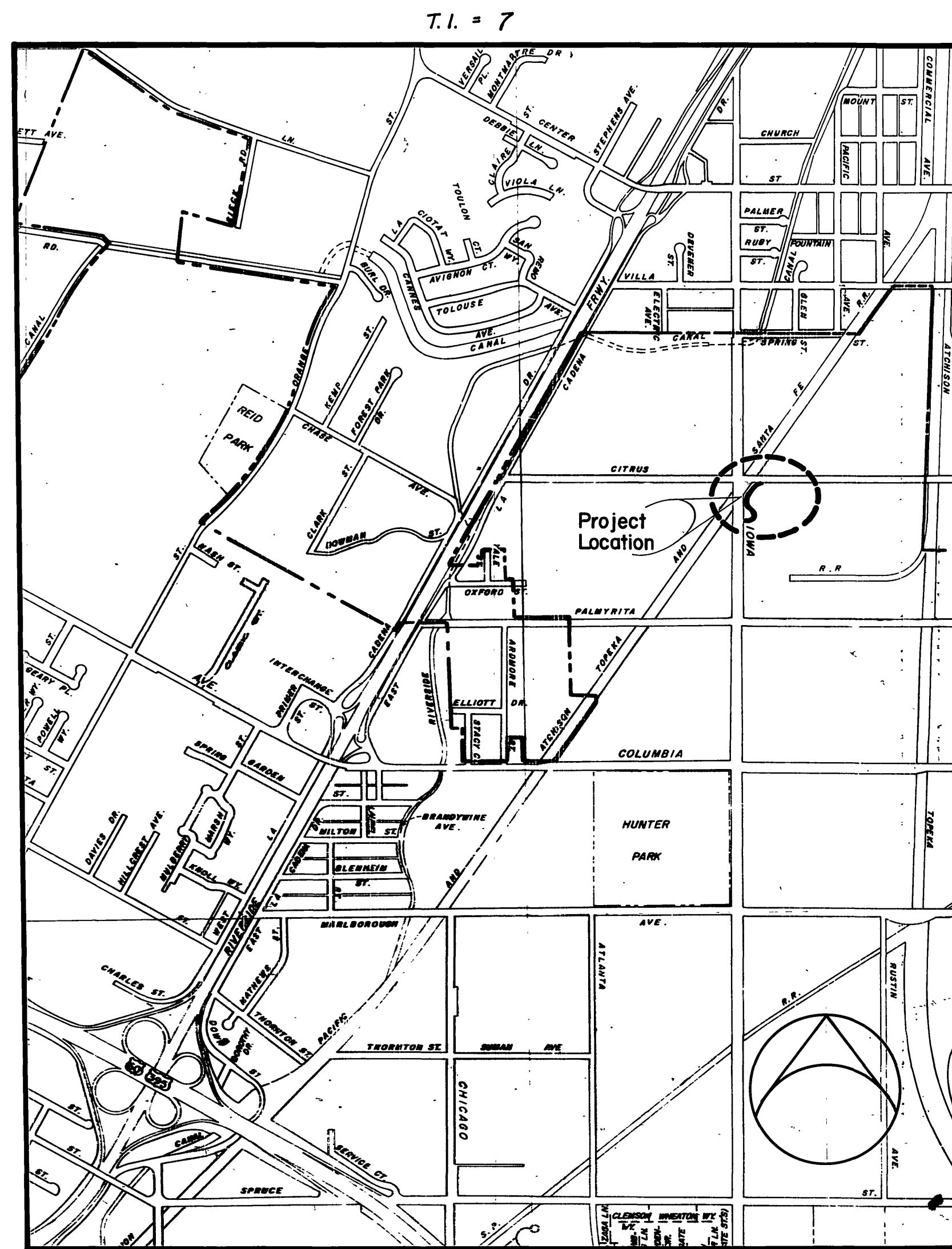
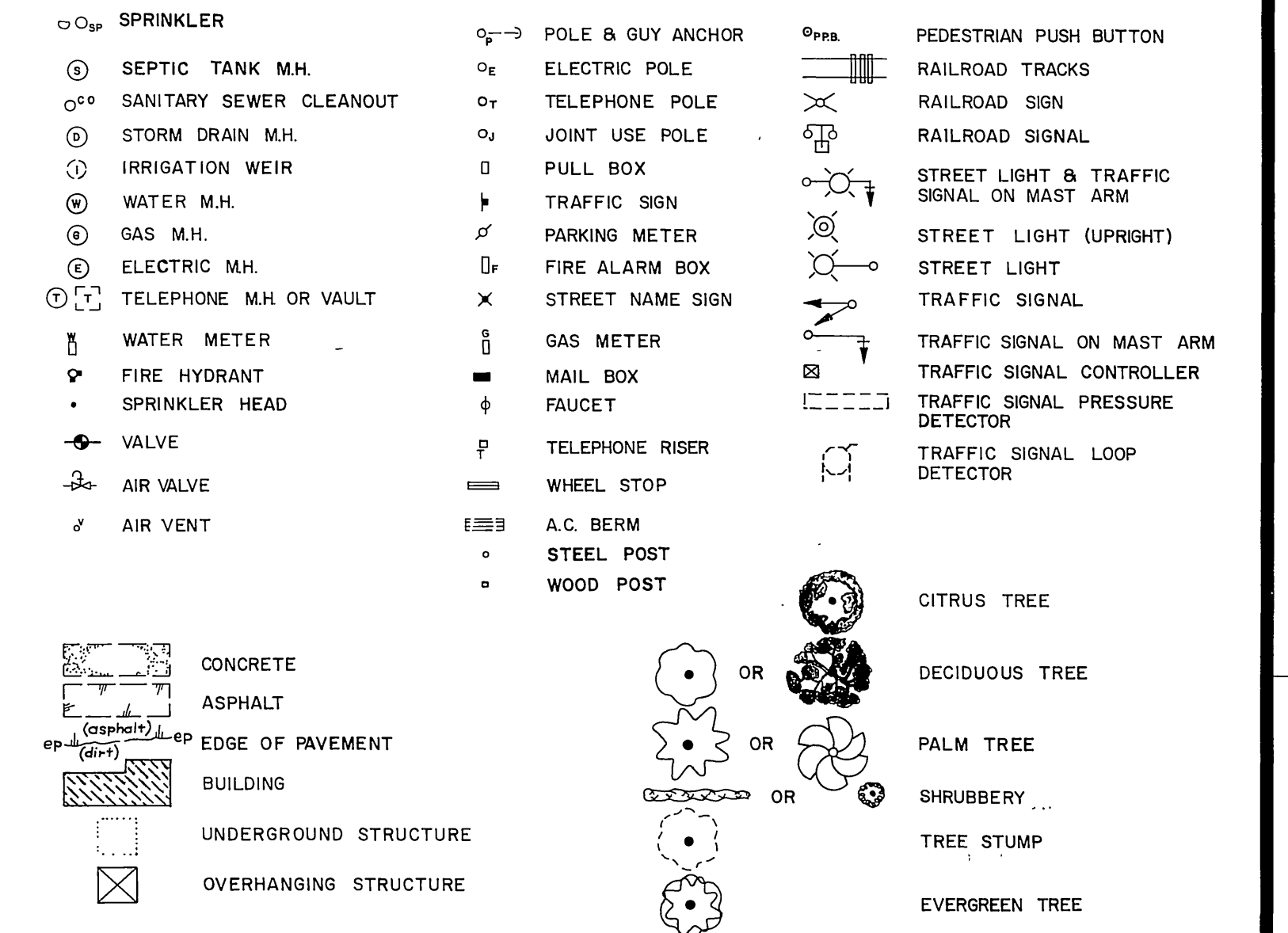
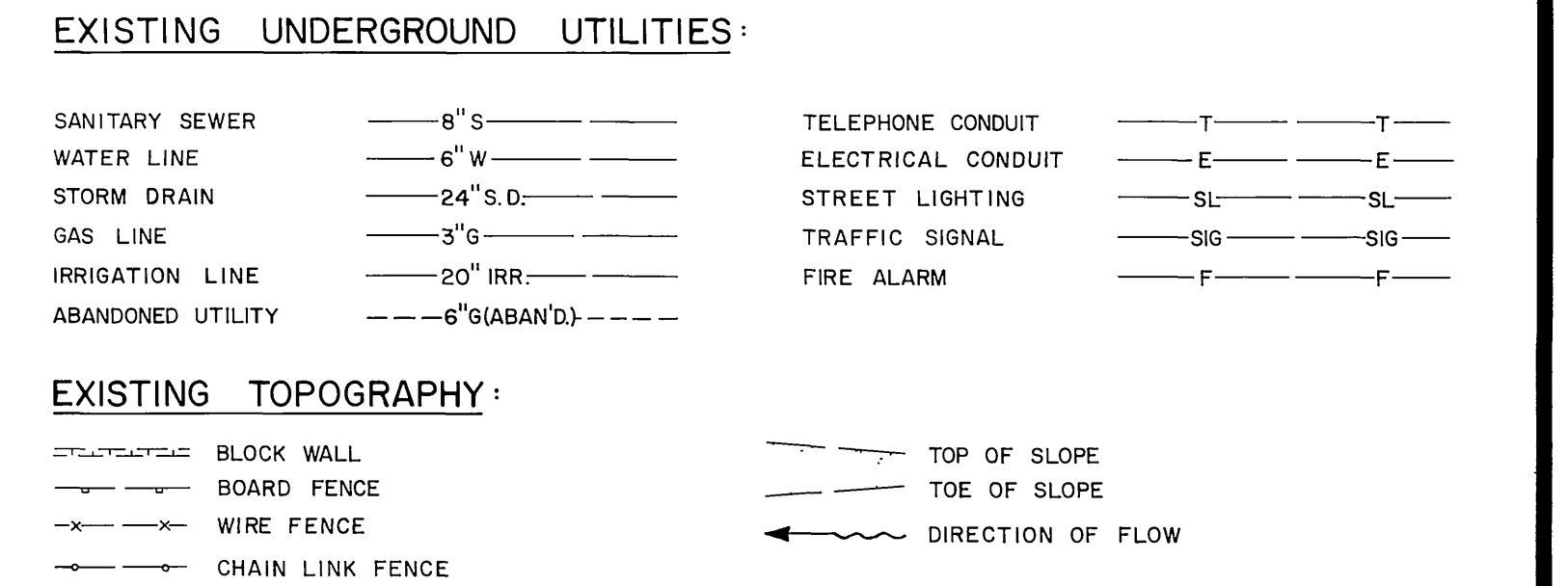
**SPECIFIC CONSTRUCTION NOTES**

-  NUMBERS ABOVE 100 IN A HEXAGON ON THE PLAN REFER TO THE RESPECTIVE STANDARD DRAWING AND SHALL BE CONSTRUCTED ACCORDINGLY, UNLESS MODIFICATIONS ARE NOTED ON THE PLAN OR COVER SHEET BELOW. ANY NUMBER SHOWN BELOW THE STANDARD DRAWING NUMBER INDICATES THE SPECIFIC ALTERNATE TO BE CONSTRUCTED.
-  TRANSPLANT PALM TREE TO LOCATION INDICATED ON PLAN.
-  PROPOSED PALM TREE LOCATION.
-  REMOVE ENTIRE TREE.
-  DETAIL SHEET

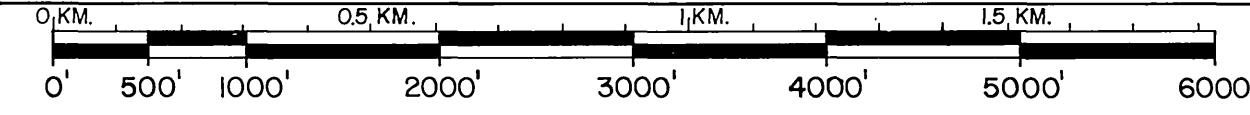
**GENERAL CONSTRUCTION NOTES**

- 1 CONSTRUCTION TO BE IN ACCORDANCE WITH STANDARD SPECIFICATIONS FOR PUBLIC WORKS CONSTRUCTION, 1979 EDITION.
- 2 EXISTING UTILITIES, SHOWN ON THIS PLAN, ARE PLOTTED FROM UTILITY RECORDS. THE CONTRACTOR IS REQUIRED TO TAKE DUE PRECAUTIONARY MEASURES TO LOCATE AND PROTECT ALL UTILITIES WHETHER OR NOT SHOWN ON THE PLANS. IF THE COVER OF A UTILITY IS KNOWN, IT IS SHOWN IN THE PROFILE. UTILITIES SHOWN IN THE PROFILE AS  INDICATES THAT COVER IS UNKNOWN, BUT THE UTILITY IS NOT EXPECTED TO CONFLICT WITH IMPROVEMENTS.
- 3 EXISTING SPRINKLERS SHALL BE REMOVED WHERE THEY CONFLICT WITH THE PROPOSED IMPROVEMENT AND EXISTING PIPES SHALL BE CAPPED AS DIRECTED BY THE ENGINEER. ALL SPRINKLERS AND VALVES WHICH MAY BE REUSED SHALL BE STOCKPILED AS DIRECTED BY THE ENGINEER.

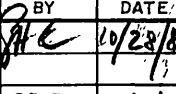

**EXISTING UNDERGROUND & TOPOGRAPHY LEGEND**



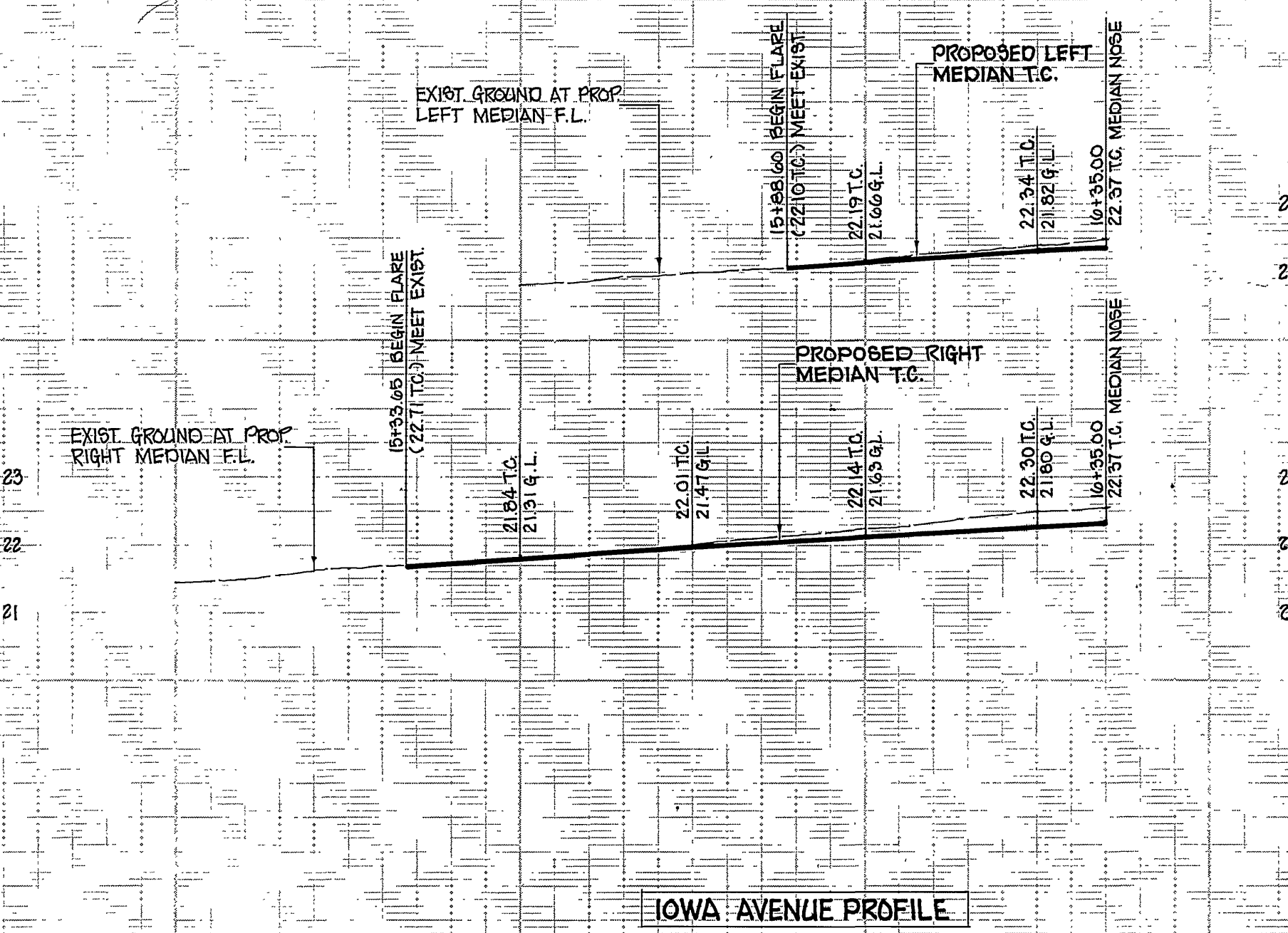
**PROJECT LOCATION PLAN**



SCALE 1" = 1000'

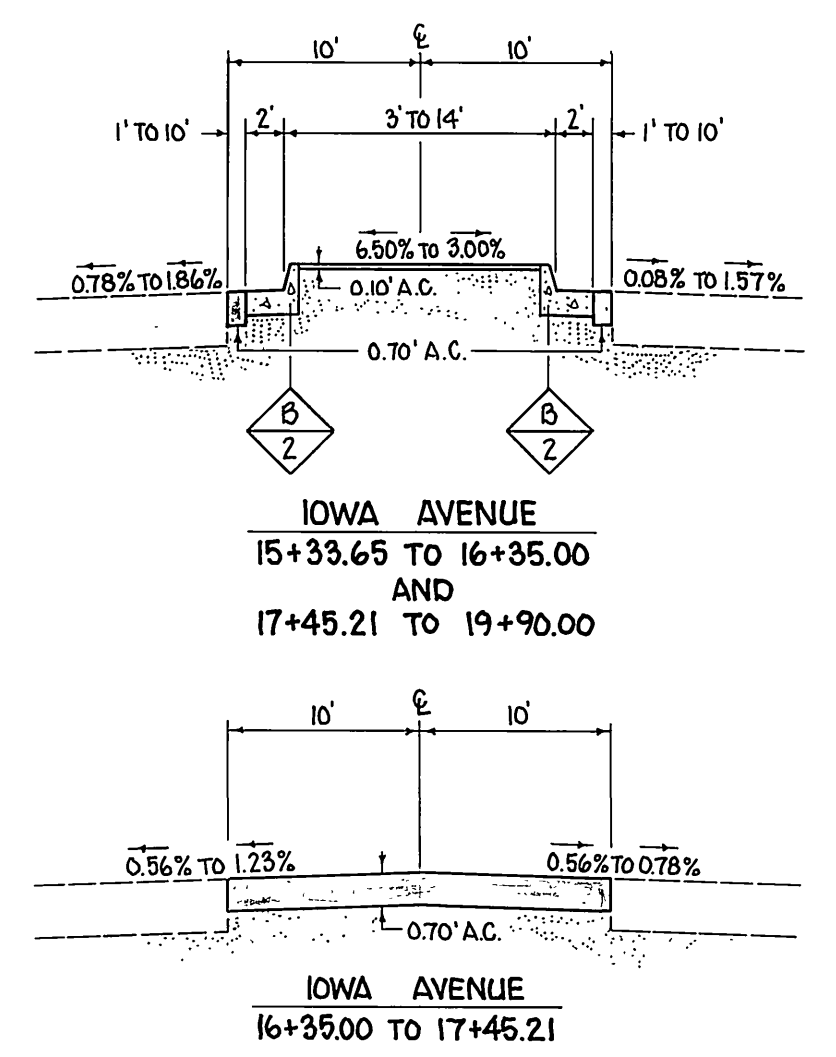
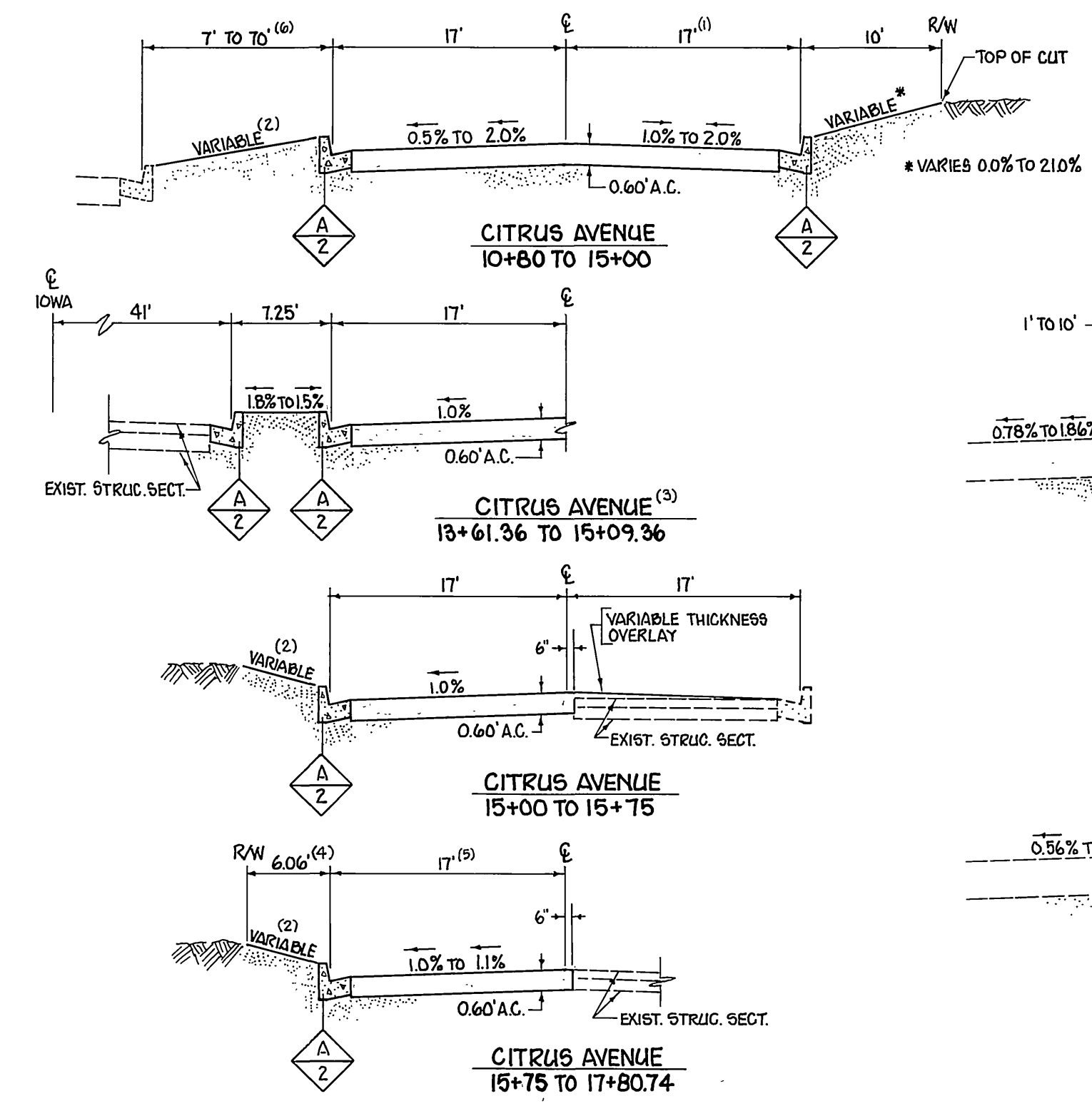
<b>CITY OF RIVERSIDE PUBLIC WORKS DEPARTMENT</b>		<b>CITRUS AVE AT IOWA</b>	<b>R-2110</b>
APPROVED BY: PRINCIPAL ENGINEER PARK DEPARTMENT TRAFFIC DIVISION CHIEF P.W. ENGINEER	BY:  DATE: 11/23/00	APPROVED BY: PUBLIC WORKS DIRECTOR DATE: 11/27/00	DESIGNED BY:  DRAWN BY: JY/BK CHECKED BY: BMM/2dR

AS BUILT 5/6/01 6K. INDEXED 8LD. PROJECT NO. 50-575-290-07. SHEET 1 OF 4



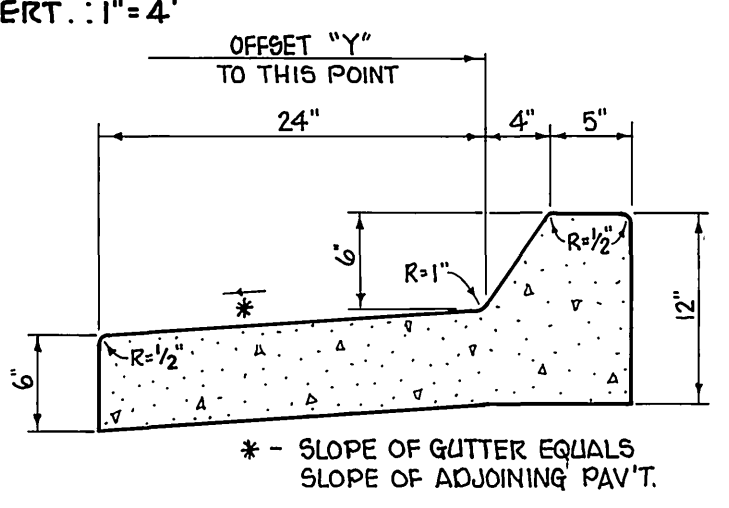
IOWA AVENUE PROFILE

BENCHMARK: F.B. 1016/10: R.R. SPIKE UP 0.2' IN W'LY SIDE TELEGRAPH POLE ON EAST SIDE IOWA AVE. 32.3' FROM EAST END OF CURB AT RAILROAD. ELEV. 226.374'

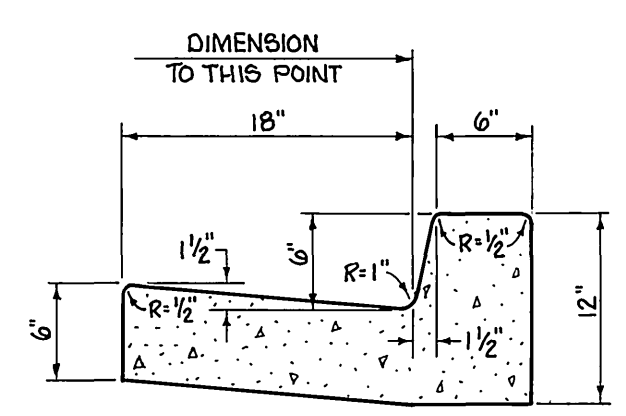


IOWA AVENUE MEDIAN

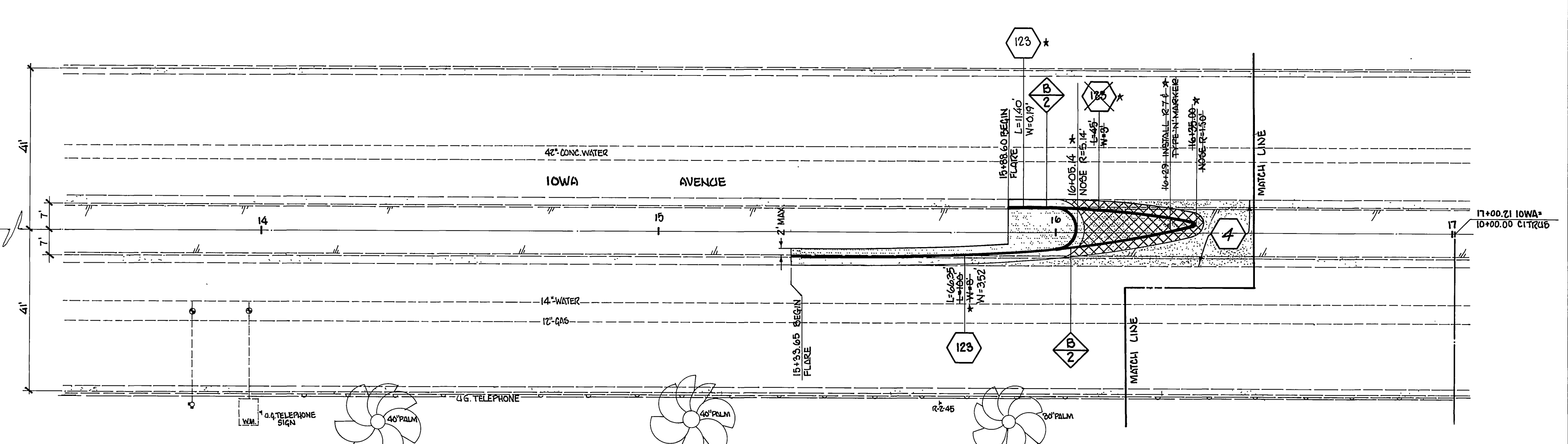
SCALE: HORIZ.: 1" = 10'  
VERT.: 1" = 4'



CURB DETAIL  
SCALE: 1" = 1'



CURB DETAIL  
SCALE: 1" = 1'



- (1) VARIES FROM 17' RT. TO 38.18' RT. BETWEEN STA. 10+79.79 CITRUS AND STA. 11+84.40 CITRUS.
- (2) SLOPE TO BE GRADED AS DIRECTED BY THE ENGINEER.
- (3) STA. 13+61.36 TO STA. 15+09.36 CITRUS = STA. 19+42.00 TO STA. 20+90.00 IOWA.
- (4) STA. 13+98.97 TO STA. 17+31.08 CITRUS.
- (5) VARIES FROM 17' LT. TO 46'97" LT. BETWEEN STA. 17+31.08 CITRUS AND STA. 17+80.74 CITRUS.
- (6) STA. 11+50 TO STA. 19+42.

CITRUS AVENUE  
SCALE: HORIZ.: 1" = 10'  
VERT.: 1" = 4'

TYPICAL SECTIONS

<p>CITY OF RIVERSIDE PUBLIC WORKS DEPARTMENT</p> <p>APPROVED BY: [Signature] DATE: 10/22/80</p> <p>PRINCIPAL ENGINEER: [Signature] DATE: 10/22/80</p> <p>PARK DEPARTMENT: [Signature] DATE: 10/22/80</p> <p>TRAFFIC DIVISION: [Signature] DATE: 10/22/80</p> <p>CHIEF P.W. ENGINEER: [Signature] DATE: 10/22/80</p>		<p>APPROVED BY: [Signature] DATE: 10/22/80</p> <p>PUBLIC WORKS DIRECTOR</p>		<p>ACCOUNT NO. 30-575-260-07</p>
<p>DESIGNED BY: [Signature] DRAWN BY: [Signature] CHECKED BY: [Signature]</p>		<p>DATE: 10/22/80</p>		<p>INVESTED \$10</p>
<p>REVISIONS:</p>		<p>DATE:</p>		<p>FILE NO.</p>

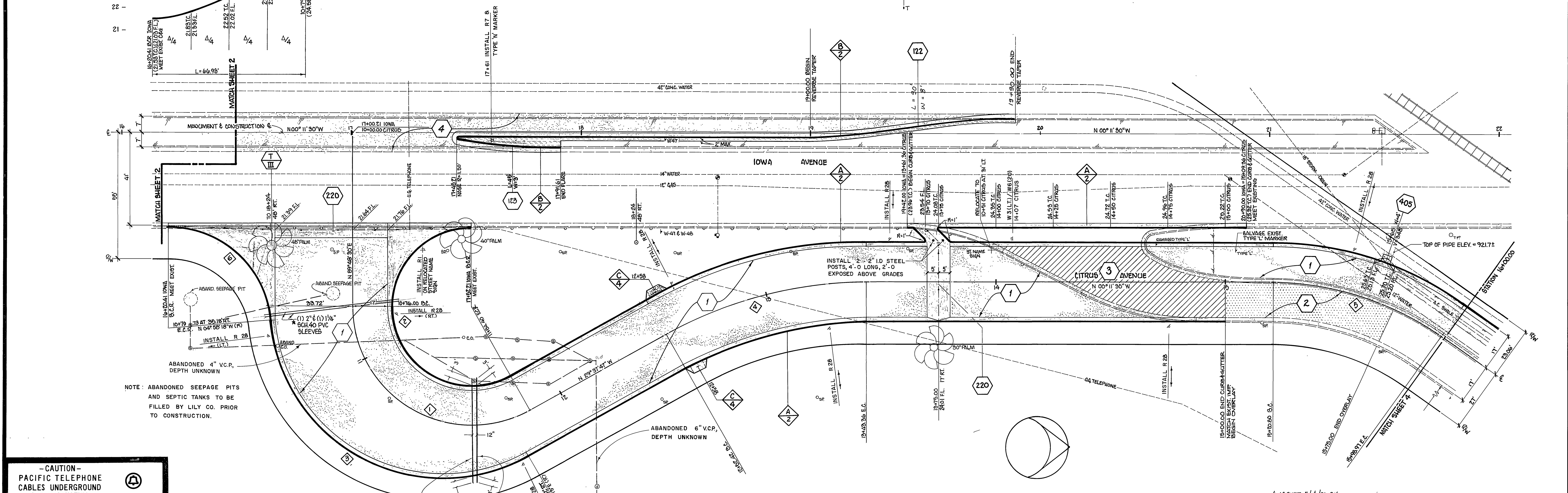
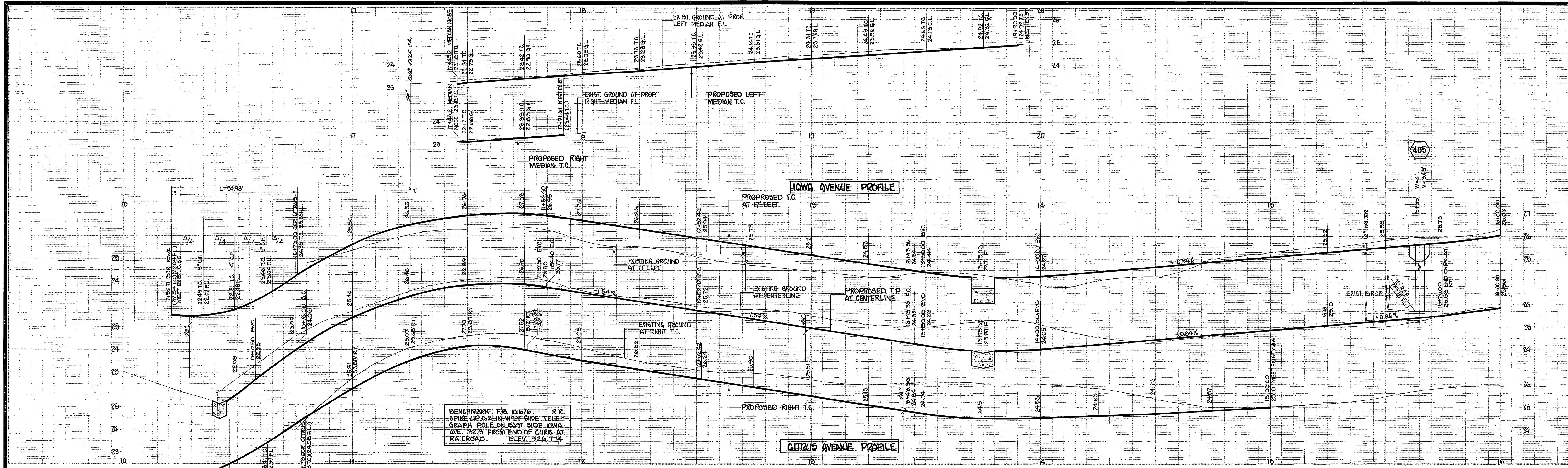
CITRUS AVE AT IOWA

R-2110

SHEET 2 OF 4

HORIZ. SCALE: 1" = 20' VERT. SCALE: 1" = 2'





**-CAUTION-**  
PACIFIC TELEPHONE  
CABLES UNDERGROUND  
BEFORE EXCAVATING  
CALL COLLECT:

7:30 A.M. to 5 P.M. & Holidays  
After Hours

Orange County 714-633-0811 714-547-6606  
Riverside County 714-684-0071 714-547-6606  
Inyo County 714-684-0071 714-547-6606  
San Bernardino County 714-684-0071 714-547-6606  
Los Angeles County 213-621-3111  
Ventura County 213-621-3111  
San Diego County 714-298-0595 714-232-0027

FOR FREE CABLE LOCATING SERVICE

CURVE	Δ	R	T	L
1	119°26'11"	52.00'	89.06'	106.40'
2	209°26'11"	95.00'	127.94'	171.94'
3	114°59'29"	75.00'	116.96'	150.09'
4	29°26'11"	171.00'	46.50'	90.94'
5	95°10'	127.95'	40.36'	78.16'
6	85°18'12"	45.00'	41.59'	66.93'

**CITY OF RIVERSIDE  
PUBLIC WORKS DEPARTMENT**

APPROVED BY: [Signature]  
PRINCIPAL ENGINEER

APPROVED BY: [Signature]  
PUBLIC WORKS DIRECTOR

TRAFFIC DIVISION: [Signature]  
CHIEF P.W. ENGINEER

DATE: 10/27/80

**CITRUS AVE  
AT IOWA**

HORIZ. SCALE: 1" = 20'  
VERT. SCALE: 1" = 2'

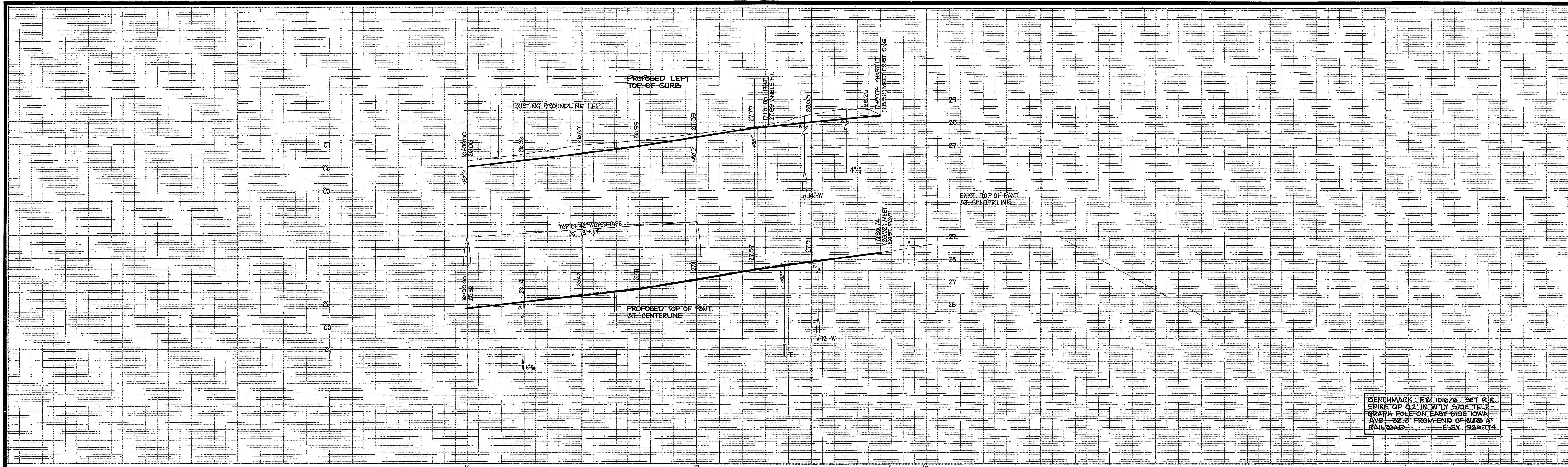
INDEXED BLD  
ACCOUNT NO. 30-575-260-07

**R-2110**

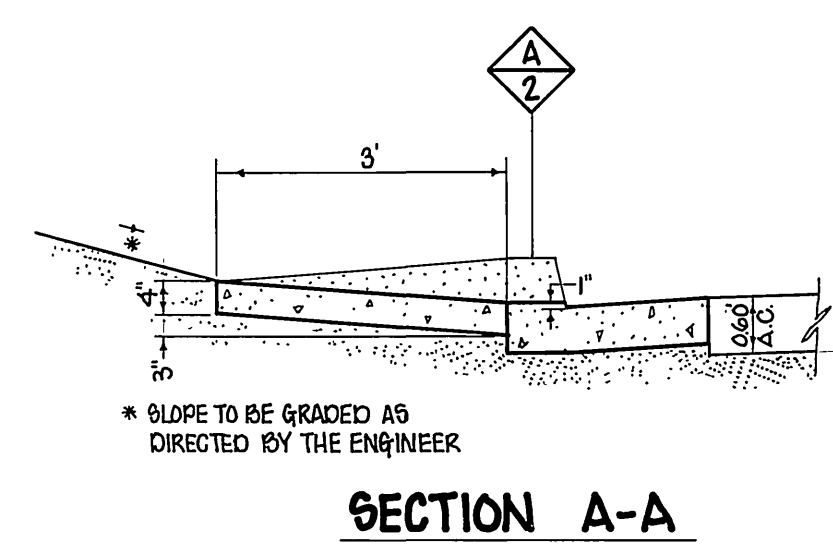
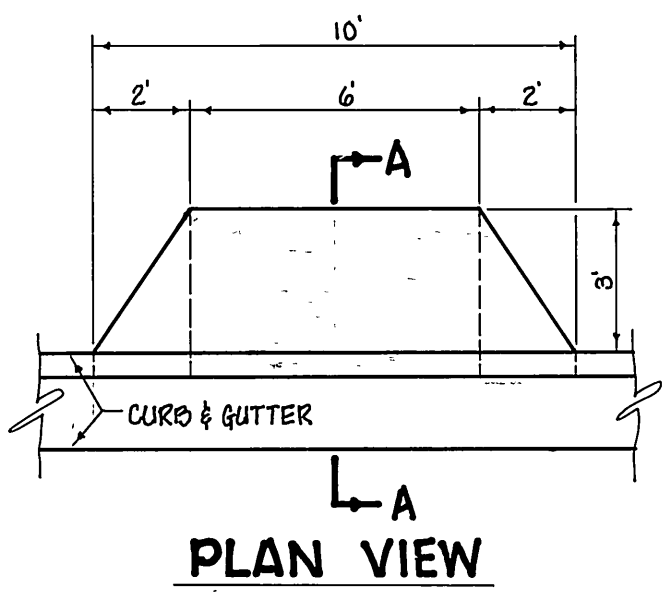
SHEET 3 OF 4

FILE NO.

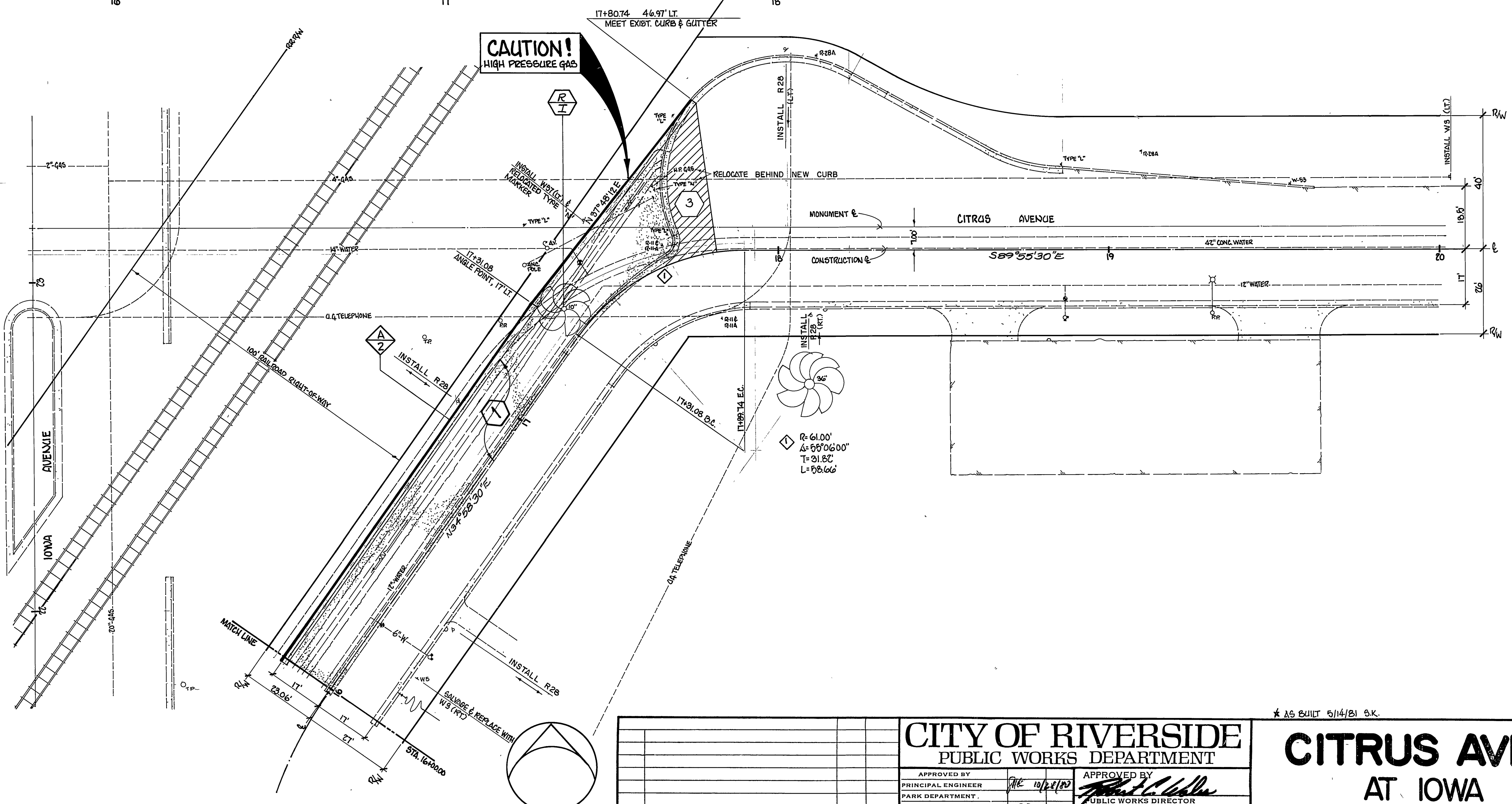




BENCHMARK: R.R. 101676. SET R.R. SPIKE UP 0.2 IN W/4\"/>



**CURB DEPRESSION DETAIL AT 12+58**  
SCALE: 1"=2'



**- CAUTION -**  
PACIFIC TELEPHONE CABLES UNDERGROUND BEFORE EXCAVATING  
CALL COLLECT:  
After Hours & Holidays  
Orange County 714-633-0811 714-547-6606  
Riverside County 714-684-0071 714-547-6606  
Inyo County 714-684-0071 714-547-6606  
San Bernardino County 714-684-0071 714-547-6606  
Los Angeles County 213-621-3111 24 HOUR SERVICE  
Ventura County 213-621-3111  
San Diego County 714-298-0595 714-232-0027  
FOR FREE CABLE LOCATING SERVICE

<b>CITY OF RIVERSIDE</b> PUBLIC WORKS DEPARTMENT		<b>CITRUS AVE</b> AT IOWA		ACCOUNT NO. 90-515-260-07 <b>R-2110</b> SHEET 4 OF 4 FILE NO.
APPROVED BY PRINCIPAL ENGINEER PARK DEPARTMENT TRAFFIC DIVISION CHIEF P.W. ENGINEER	APPROVED BY PUBLIC WORKS DIRECTOR	DESIGNED BY DRAWN BY CHECKED BY	DATE	HORIZ. SCALE: 1" = 20' VERT. SCALE: 1" = 2'