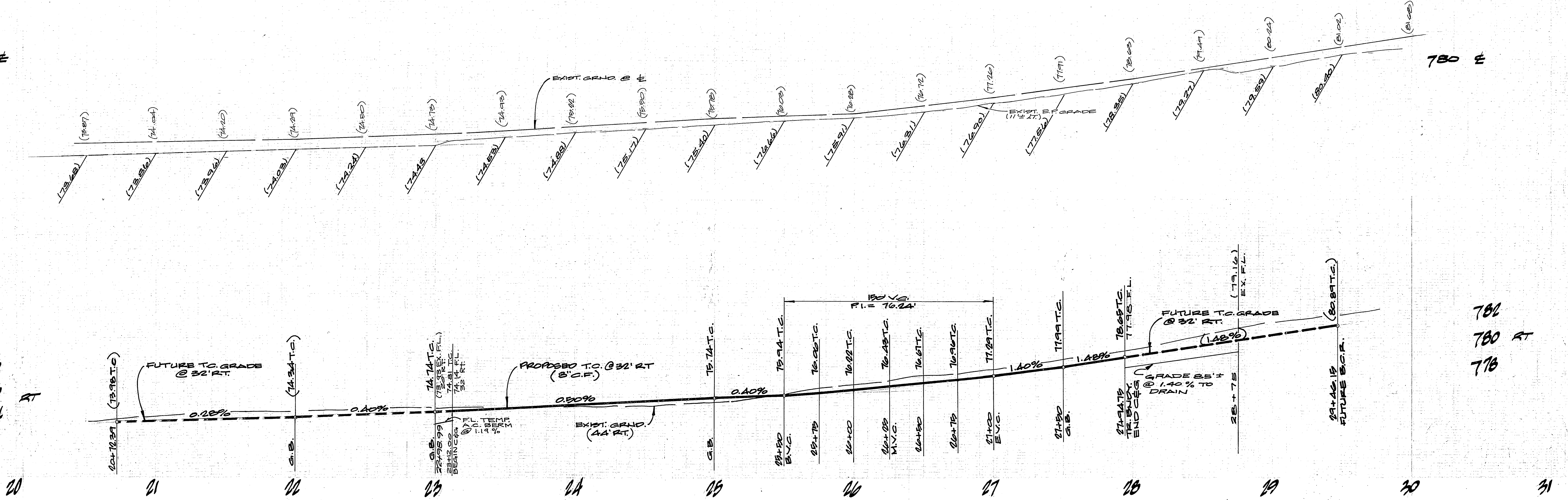


780 ±

780 ±

778
776
774

781
780 RT
778

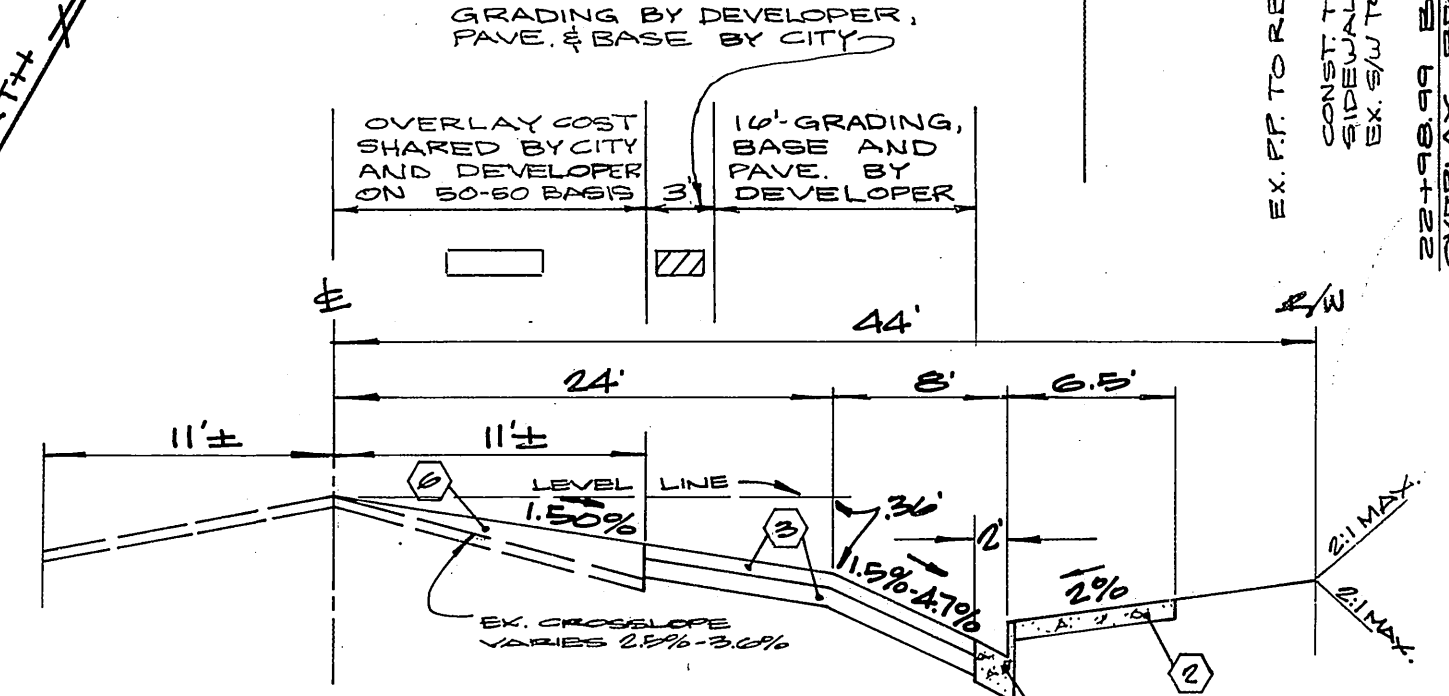
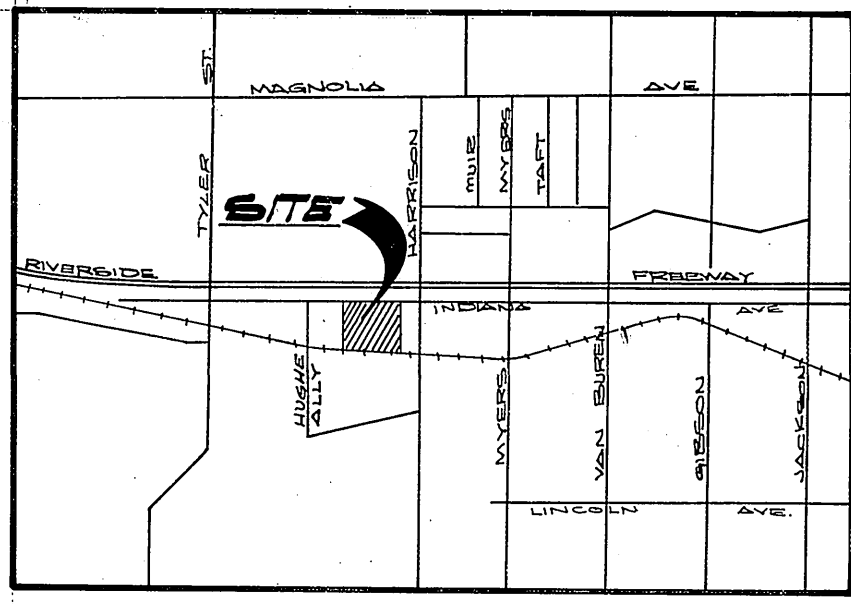
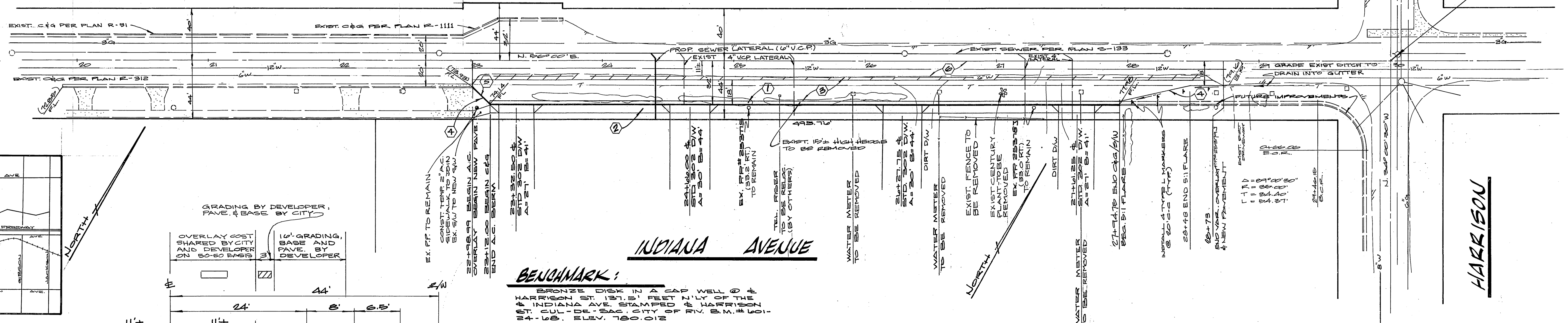


CONSTRUCTION NOTES

1. CONSTRUCT STANDARD 200 CURB & GUTTER (B.C.F.)
2. CONSTRUCT STANDARD 322 CURBLINE SIDEWALK.
3. CONSTRUCT 2" A.C. PAVING OVER 4" D.G. OR 4" A.C. PAVING OVER COMPACTED NATIVE, PER SR 1034
4. INSTALL 2"x4" REDWOOD HEADER.
5. CONSTRUCT STANDARD 200 TYPE I A.C. BERM.
6. CONSTRUCT VARIABLE A.C. OVERLAY.

GENERAL NOTES

1. THE PRIVATE ENGINEER SIGNING THESE PLANS IS RESPONSIBLE FOR THE ACCURACY AND ACCEPTABILITY OF THE WORK HEREON. IN THE EVENT OF UNUSUAL DELAYS DURING CONSTRUCTION, THE PRIVATE ENGINEER SHALL BE RESPONSIBLE FOR DETERMINING AN ACCEPTABLE SOLUTION AND REVISING THE PLANS FOR APPROVAL BY THE CITY.
2. IT SHALL BE THE RESPONSIBILITY OF THE CONTRACTOR TO CLEAR THE RIGHT OF WAY IN ACCORDANCE WITH THE PROVISIONS OF LAW AS IT APPLIES TO EACH UTILITY INCLUDING IRRIGATION LINES AND AFFLUENCES AND AT NO COST TO THE CITY.
3. CONSTRUCTION SHALL BE IN ACCORDANCE WITH THE CITY OF RIVERSIDE, DEPT. OF PUBLIC WORKS, STANDARD DRAWINGS, AND THE STANDARD SPECIFICATIONS FOR PUBLIC WORKS CONSTRUCTION, 1976 EDITION.
4. TRIM EDGE OF EXISTING PAVEMENT WHERE NEW PAVEMENT JOINS TO A SMOOTH, STRAIGHT LINE. CONTRACTOR MATCH UP FINISH AS SHOWN ON PLAN AND SMOOTH PAVING AS DIRECTED IN THE FIELD TO PRODUCE A SMOOTH SECTION. ENGINEER ESTIMATES OVERLAY TO BE 50 TONS.
5. ALL FLAGGED ELEVATIONS SHALL BE STAKED IN THE FIELD BY THE PRIVATE ENGINEER.
6. SEE "STREET LIGHTING PLANS" FOR QUANTITY AND LOCATION OF ROAD LIGHTS.
7. IN ORDER TO COORDINATE THE CITY'S PORTION OF THE WORK, THE DEVELOPER SHALL GIVE THE CITY 60 DAYS NOTICE IN ORDER THAT THE DEVELOPER'S AND CITY'S WORK MAY BE INSTALLED CONCURRENTLY. THE DEVELOPER SHALL PREPARE AND COMPLET ROUGH SUBGRADE (S.U.) AND IS RESPONSIBLE FOR THE CONDITION OF THE SUBGRADE UNTIL ACCEPTED BY THE CITY AND UNTIL THE CITY'S CONTRACTOR STARTS WORKING. THE DEVELOPER IS ALSO RESPONSIBLE FOR BARRICADING DURING THIS TIME.
8. CURBS SHALL BE STAKED AT 25' INTERVALS AND 3' OFFSETS WHERE SPACES ARE 0.4% OR GREATER. CURBS HAVING GRADES OF LESS THAN 0.4% WILL BE AT 12.5' INTERVALS AND 3' OFFSETS. IN ADDITION, CURBS GRADES OF LESS THAN 0.4% SHALL SOLID STEEL COUPLER WILL BE REQUIRED AT ALL EXPANSION JOINTS.
9. CONSTRUCT DRIVEWAY APPROACHES PER STD. DWG. 302.



BENCHMARK:
BRONZE DISK IN A CAP WELL @ HARRISON ST. 187.15' FEET N.W. OF THE 4\"/>

CITY OF RIVERSIDE DOMESTIC SYSTEM
PACIFIC TELEPHONE
James H. ... 1/1/79
CHIEF UTILITIES ENGINEER - WATER
James C. ... 2-15-78
DATE

ALBERT A. WEBB ASSOCIATES CIVIL ENGINEERS RIVERSIDE, CALIFORNIA APPROVED BY: <i>Donald H. Webb</i> DATE 11/15/78 RE. NO. 9876 DESIGNED BY M.C. DRAWN BY KUHLE CHECKED BY A.B.	CITY OF RIVERSIDE, CALIFORNIA DEPARTMENT OF PUBLIC WORKS APPROVED BY: <i>R. J. Webb</i> DATE 6/29/79	STREET PLAN & PROFILE INDIANA AVENUE SOUTH SIDE (STA. 20+72.28 TO STA. 27+94.75) WLY OF HARRISON STREET FOR: M.P.-B-78A HORIZ. 1"=40' VERT. 1"=4' SHEET 1 OF 1 78-2170 78-238A
--	---	---