

Reference Number	Street & Limits	Side of Street	Material	Type of Sidewalk	Width	Length of Sidewalk	Length of Driveway Approach (ft. Dimension)	Remarks
	Jefferson to 2nd S.W.	N.W.	P.C.C.	Property Line	6'	150'	0'	Adjust grade of sidewalk to top of curb. Replace sidewalk at curb and replace wheelchair ramp at Jefferson.
8.	Garfield - Shelby to Melody	N.W.	P.C.C.	Curb	6'	238'	0'	Match existing sidewalk. Wheelchair ramp at Shelby.
9.	Rutland - Arlington to Randolph	West	P.C.C.	Curb	6'	1502'	0'	Wheelchair ramps at Julia Mrs. Perry 221 Bruce, Terrace Elementary School entrance 121 Sylvan, and Randolph.
10.	Ma - Brass to Leslie	East	P.C.C.	Curb	4'	830'	0'	Match existing sidewalk. Transition to existing property line sidewalk.
11.	Keller - Tyler to approx. 300' west	South	P.C.C.	Curb	4.5'	236'	70'	Match existing sidewalk.
12.	Rutland - Cypress to Arlington	West	P.C.C.	Curb	6'	284'	70'	Match existing sidewalk. Wheelchair ramp at Cypress.
13.	Philbin - Noble to Challen	North	P.C.C.	Curb	6'	264'	34'	Match existing sidewalk. Wheelchair ramp at Noble.
	Rutland to approx. 82' East of Challen	North	P.C.C.	Property Line	5'	570'	1/4	Wheelchair ramps at Challen. Sidewalk grade to match existing conditions. Fill in between back of curb and new sidewalk where necessary.
14.	Dorset - Wilmore to Wallingham	N.W.	P.C.C.	Curb	4.5'	360'	0'	Fill in gap (5'-7") between existing driveway approach and sidewalk east of Wallingham.
15.	Indiana - Gibson to Jackson	N.W.	P.C.C.	Property Line	5'	708'	N/A	Match existing sidewalk. Adjust sidewalk grade to existing conditions. Sidewalk at 2051' north of curb set back from curb as far as existing sidewalk on the SE 1/4 of lot.
	Gibson to Sidney	N.W.	P.C.C.	Property Line	5'	708'	N/A	Match existing sidewalk. Adjust sidewalk grade to existing conditions. Sidewalk at 2051' north of curb set back from curb as far as existing sidewalk on the SE 1/4 of lot.
	Sidney to Jackson	N.W.	P.C.C.	Curb	4'	744'	0'	Wheelchair ramps at Sidney, Donald (21), Wilbur (2), and Jackson.
16.	Grand - Jurupa to Rubidoux (SEE CENTER BOTTOM)	SE	P.C.C.	Curb	6'	537'	36'	Remove and replace 5' x 12" depressed curb and gutter with full height curb and gutter at drive approach. Place 5' wide concrete curb sidewalk to match existing sidewalk. Place 5' wide concrete curb sidewalk to match existing sidewalk. Place 5' wide concrete curb sidewalk to match existing sidewalk. Place 5' wide concrete curb sidewalk to match existing sidewalk.
	Carlifornia to approx. 380' SE	SE	P.C.C.	Curb	6'	277'	51'	Wheelchair ramps at Carlifornia and approx. 35' SE of Carlifornia.
	Approx. 400' NE 1/4 of Carlifornia to approx. 600' NE 1/4 of Carlifornia	SE	P.C.C.	Property Line	5'	67'	1/4	Transition to existing property line sidewalk within street right-of-way. In front of 562' north of grade to match existing sidewalk. Wheelchair ramp at corner of Carlifornia.
	Approx. 130' NE 1/4 of Milton to approx. 400' NE 1/4 of Milton	SE	P.C.C.	Curb	5'	254'	18'	Transition to existing property line sidewalk. Replace curb and gutter in curb with 5' curb in front of 582' Grand.
	Approx. 400' SW 1/4 of Rubidoux to Rubidoux	SE	P.C.C.	Property Line	5'	400'	1/4	Match existing sidewalk. Wheelchair ramp at Rubidoux.
17.	Melody - Magnolia to Garfield	NE	P.C.C.	Curb	6'	1046'	24'	Wheelchair ramps at Magnolia, Harmon, 1212 Harmon, and Garfield.
18.	Bruce - Ma to Rutland	North	P.C.C.	Curb	6'	370'	0'	Match existing sidewalk.
19.	Noble - Branigan to approx. 100' south	NE	P.C.C.	Curb	6'	100'	0'	Match existing sidewalk. Wheelchair ramp at corner of Branigan.
20.	Streeter - Central to Dewey	Central	P.C.C.	Property Line	6'	114'	0'	Match existing sidewalk. Wheelchair ramp at Streeter.
	Streeter to approx. 270' south	Central	P.C.C.	Property Line	6'	114'	0'	Match existing sidewalk. Wheelchair ramp at Streeter.
	Approx. 275' north of Dewey to approx. 140' south of Dewey	East	P.C.C.	Curb	6'	137'	0'	Match existing sidewalk.
	Approx. 140' south of Dewey to Dewey	West	P.C.C.	Curb	6'	101'	0'	Remove curb and wall. Wheelchair ramp at Dewey.
21.	Mt. Vernon - Big Springs to 320' north	East	P.C.C.	Curb	6'	320'	0'	Match existing sidewalk. Wheelchair ramp at Big Springs.
22.	Big Springs - Mt. Vernon to 390' west	North	P.C.C.	Curb	6'	390'	0'	Match existing sidewalk.
23.	Phoenix - Arlington to approx. 250' north	East	P.C.C.	Property Line	5'	231'	N/A	Match existing sidewalk.
24.	Jurupa - Olivewood to 180' west	South	P.C.C.	Curb	6'	162'	19'	Match existing sidewalk.
25.	Jackson - Garfield to approx. 550' SE	NE	P.C.C.	Curb	6'	366'	126'	Match existing sidewalk. Fill in existing NE 1/4 curb depression of 3018 Jackson (Place 24' L.F. of curb and gutter).
26.	Adams - California to Camelia	SW	P.C.C.	Property Line	5'	234'	N/A	Match existing sidewalk. Adjust sidewalk to miss curb and tree at Adams.
	California - Jefferson to Arlington	NE	P.C.C.	Curb	4.5'	960'	0'	Match existing sidewalk. Wheelchair ramp at California.
27.	Via San Luis - California to Arlington	NE	P.C.C.	Curb	4.5'	960'	0'	Match existing sidewalk. Wheelchair ramp at California.
28.	Magnolia - Donald to Doubletree	SE	P.C.C.	Property Line	5'	188'	N/A	Match existing sidewalk.
29.	Victoria - 600' SW 1/4 of Doubletree to Doubletree	SE	P.C.C.	Property Line	5'	600'	N/A	See Special Provisions, Part 3 "D.G. Walkway on S 1/4 side of Victoria" and Drawing L-167.
30.	La Sierra - Arizona to Magnolia	NE	A.C.	Berm	5.1"	2000'	N/A	See Sh. 2 Details III & IV
	Approx. 700' NW 1/4 of Arizona to Indiana	NE	A.C.	Berm	5.1"	2000'	N/A	See Sh. 2 Details III & IV
	Indiana to Magnolia	SW	A.C. & Berm & Curb		6'	1040'	N/A	See Sh. 2
	Approx. 100' NW 1/4 of Arizona to Indiana	P.C.C.	Curb		6'	150'	N/A	Match existing sidewalk.
31.	Orange and 7th	N.E. Corner	P.C.C./N/A	N/A	N/A	N/A	N/A	See Special Provisions, Part 3 "Reconstruct Wheelchair Ramp at N.E. Corner Orange & 7th and Drawing L-167."

REPLACED BACK SIDE P.C.C. SIDEWALK WITH A.C. SIDEWALK PER ADDENDUM 14.1 WILL DELETED SIDEWALK ON SE 1/4 SIDE OF MAPLEWOOD BETWEEN BROCKTON TO BIRCH AND DELETED SIDEWALK WIDTH ON BRITTON OF GRAND KEY OF CARLIFORNIA

DESIGNED BY *BC* DRAWN BY *BC* CHECKED BY *WVK*

CITY OF RIVERSIDE
PUBLIC WORKS DEPARTMENT

APPROVED: *[Signature]* DATE: *1/18/73*

PRINCIPAL ENGINEER: *[Signature]* DATE: *1/18/73*

PARK DEPARTMENT: *[Signature]* DATE: *1/18/73*

TRAFFIC DIVISION: *[Signature]* DATE: *1/18/73*

CHIEF P.W. ENGINEER: *[Signature]* DATE: *1/18/73*

SIDEWALK CONSTRUCTION
AT VARIOUS LOCATIONS

ACCOUNT NO. 10-578-879-04-09-30
10-578-879-05

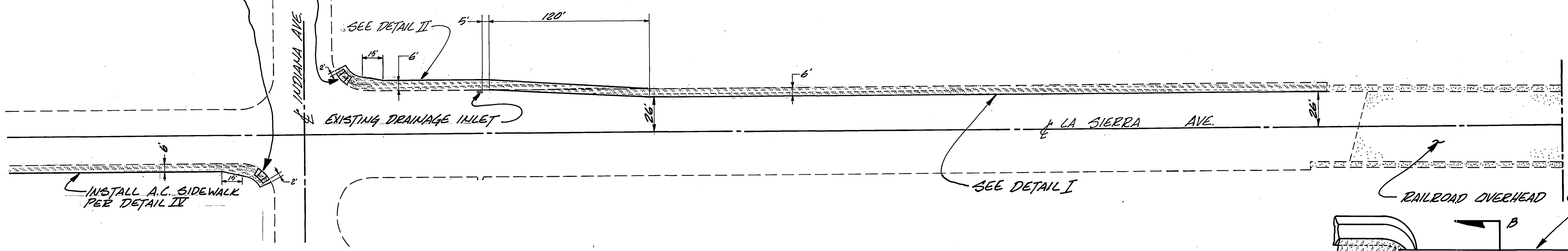
R-2174

SHEET 1 OF 2

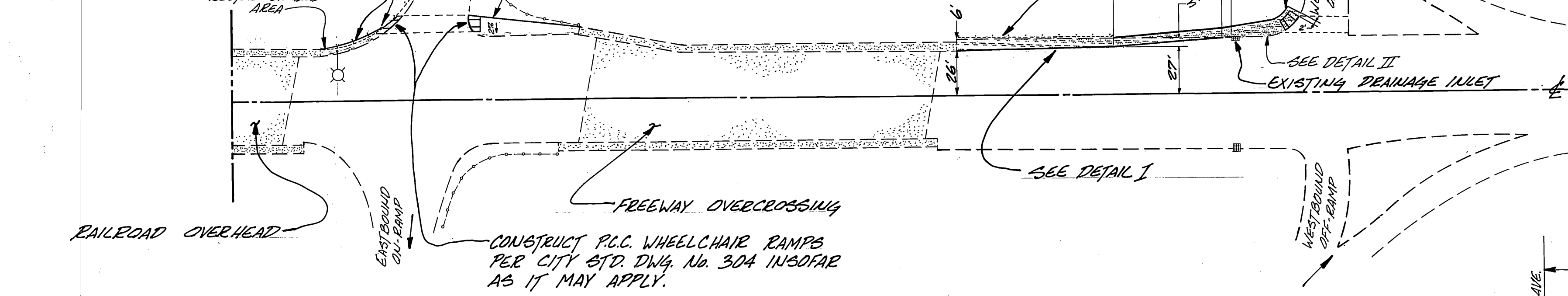
*AS BUILT - 2-5-80 ASH

HORIZ SCALE 1" = 1600' VERT SCALE 1" = N/A

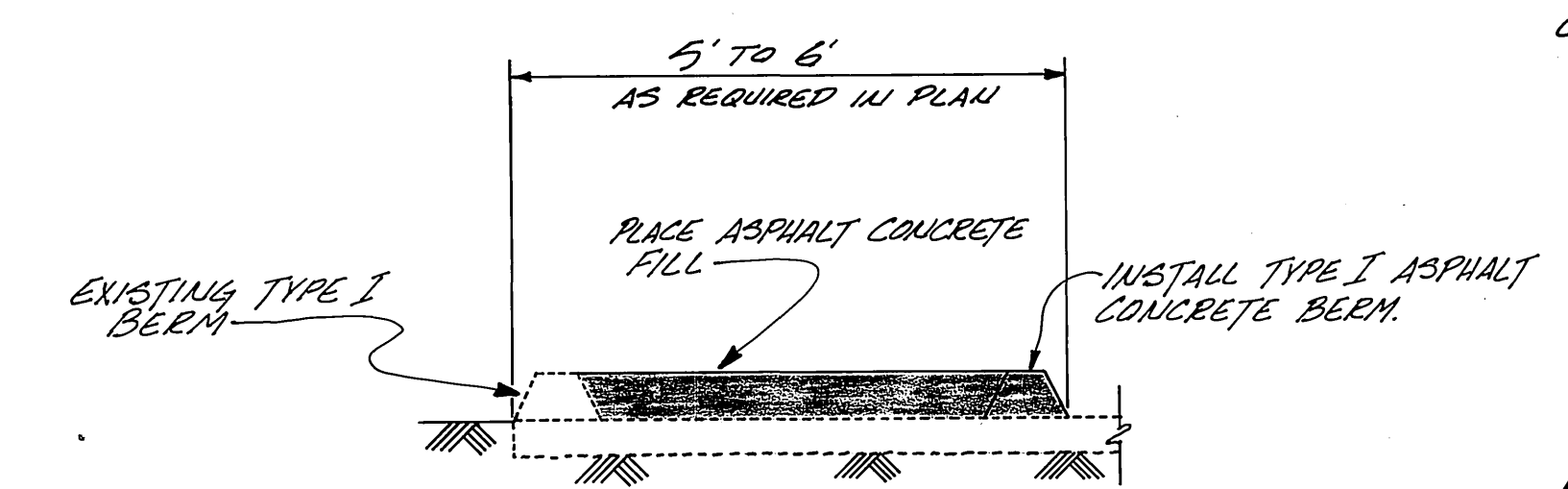
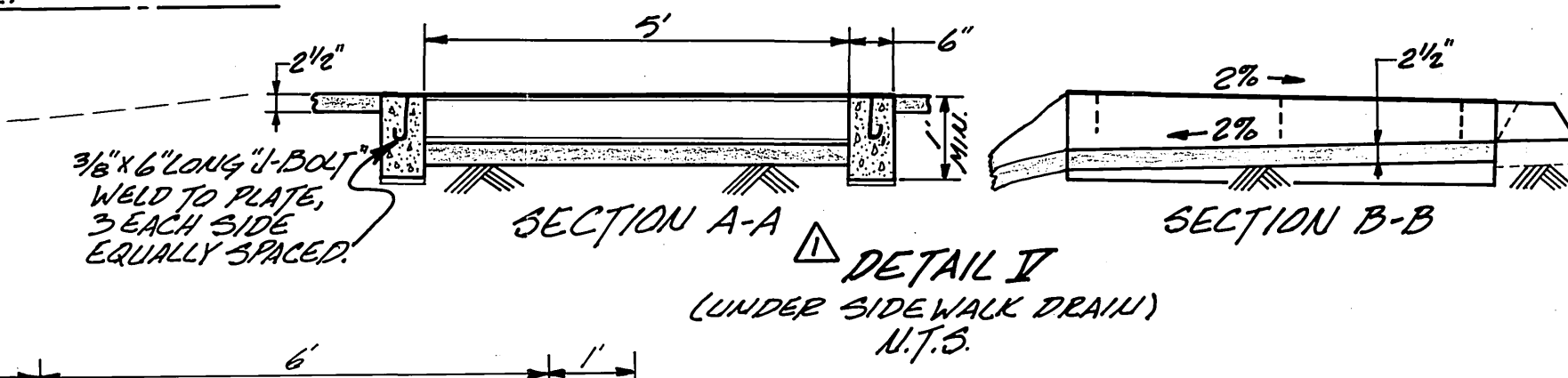
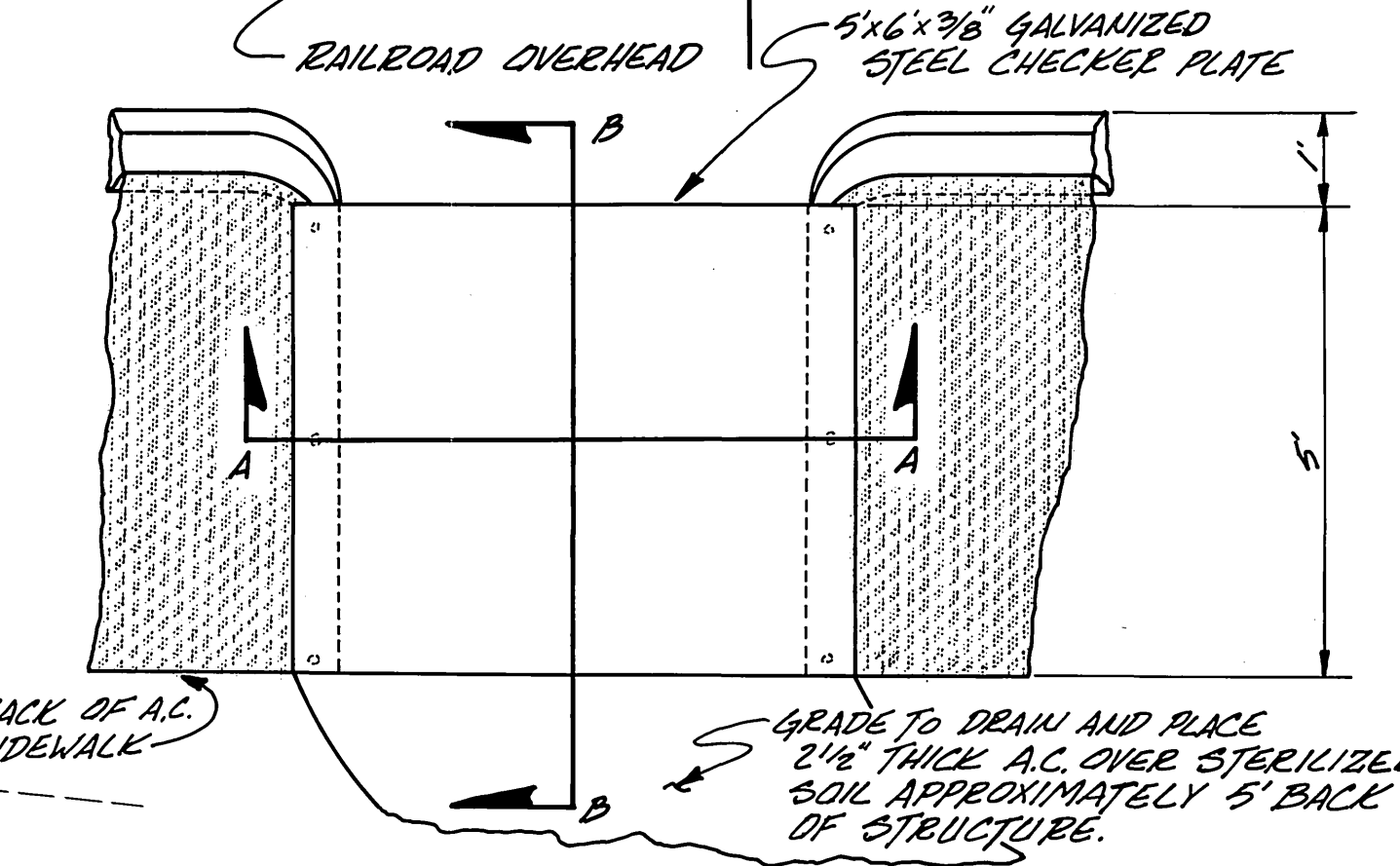
CONSTRUCT ASPHALT CONCRETE SIDEWALK AND ASPHALT CONCRETE WHEELCHAIR RAMP PER CITY STD. DWG. No. 304 INSOFAR AS IT MAY APPLY.



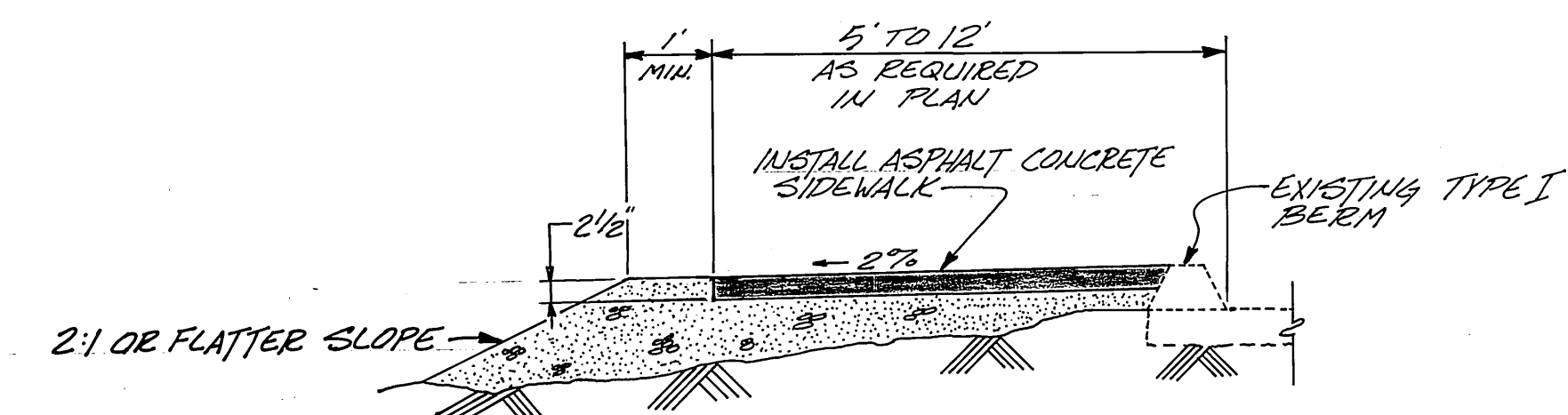
MOVE EXISTING GUARD RAIL TO PROVIDE 30' CLEARANCE BEHIND LIGHT STANDARDS. ADJUST GUARD RAIL ELEMENTS TO PROVIDE 2'-2" HEIGHT FROM TOP OF SIDEWALK TO TOP OF RAIL. TRANSITION RAIL ELEMENTS FROM NEW TO EXISTING GRADE AS NECESSARY.



CONSTRUCT ASPHALT CONCRETE SIDEWALK AND ASPHALT CONCRETE WHEELCHAIR RAMP PER CITY STD. DWG. No. 304 INSOFAR AS IT MAY APPLY.



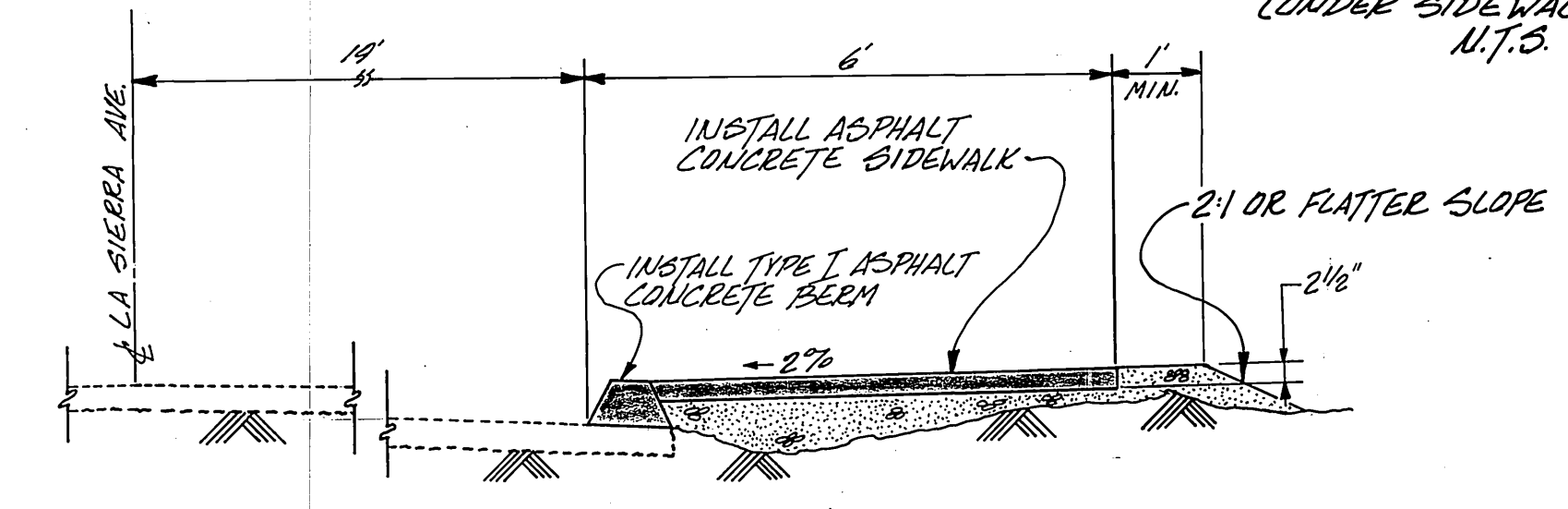
DETAIL I
N.T.S.



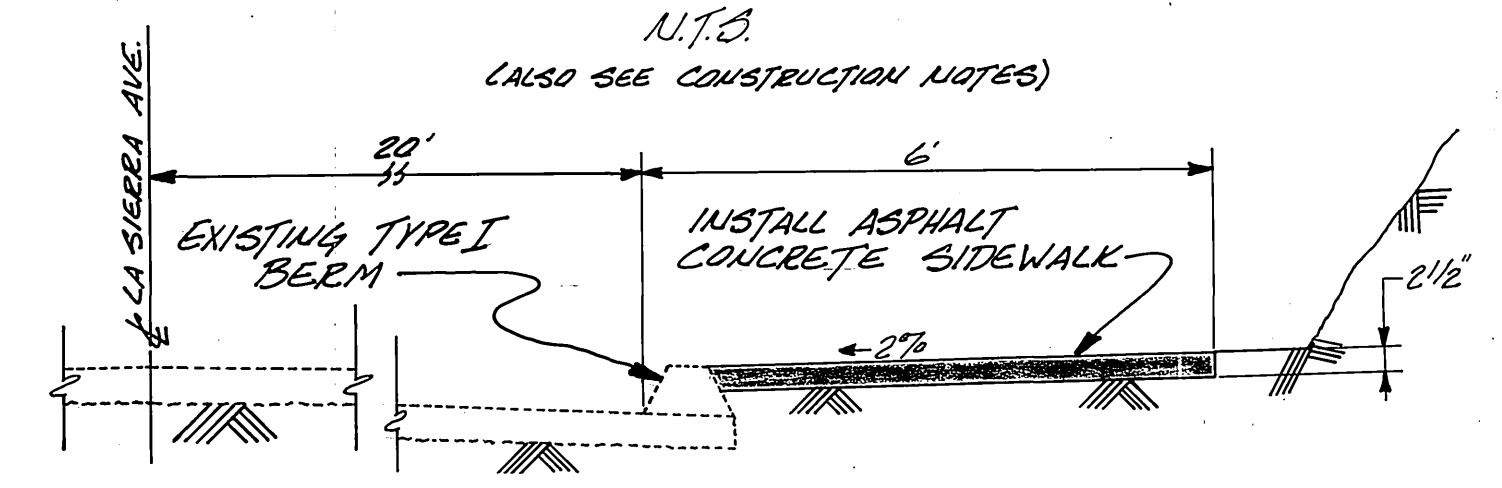
DETAIL II
N.T.S.

CONSTRUCTION NOTES:

1. FROM END OF EXISTING CURB SIDEWALK APPROX. 700 FT. NW'LY OF ARIZONA TO BEGINNING OF EXISTING TYPE I BEAM APPROX. 500 FT. SE'LY OF INDIANA, USE DETAIL III.
2. TRANSITION FROM EXISTING CURB AND SIDEWALK TO DETAIL III SECTION SHALL BE AT LEAST 60' IN LENGTH.
3. PLACE 10' L.F. OF 8" SMOOTH BORE PIPE IN SAG ABOUT 1350 L.F. NW'LY OF ARIZONA. INLET AND OUTLET CONDITIONS FOR THIS PIPE WILL BE ADAPTED IN THE FIELD. (SEE DETAIL V)
4. TRANSITION BETWEEN DETAIL III AND DETAIL II SHALL BE AT LEAST 5' IN LENGTH.
5. FROM APPROX. 500 FT. SE'LY OF INDIANA TO INDIANA USE DETAIL II.



DETAIL III
N.T.S.
(ALSO SEE CONSTRUCTION NOTES)



DETAIL IV
N.T.S.
(ALSO SEE CONSTRUCTION NOTES)

MARK	REVISIONS	APPR.	DATE
DESIGNED BY	SC	DRAWN BY	SC
CHECKED BY	WJL		

CITY OF RIVERSIDE PUBLIC WORKS DEPARTMENT			
APPROVED BY	BY	DATE	APPROVED BY
PRINCIPAL ENGINEER	JPC	4/13	Mark C. Miller
PARK DEPARTMENT			PUBLIC WORKS DIRECTOR
TRAFFIC DIVISION	WJL	4-18	
CHIEF P. W. ENGINEER			
DATE	4/19/79		

SIDWALK CONSTRUCTION ON LA SIERRA AVENUE BETWEEN ARIZONA & N'LY OF S.R.91		ACCOUNT NO. 30-375-214-04-09-30 30-375-277-09 30-375-279-09
HORIZ. SCALE: 1" = 50'		VERT. SCALE: 1" = 11/4'
R-2174		SHEET 2 OF 2

*AS BUILT - 2/5/80 RCM