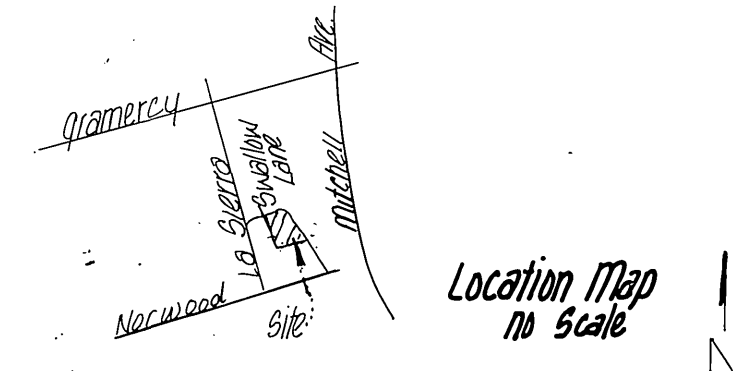
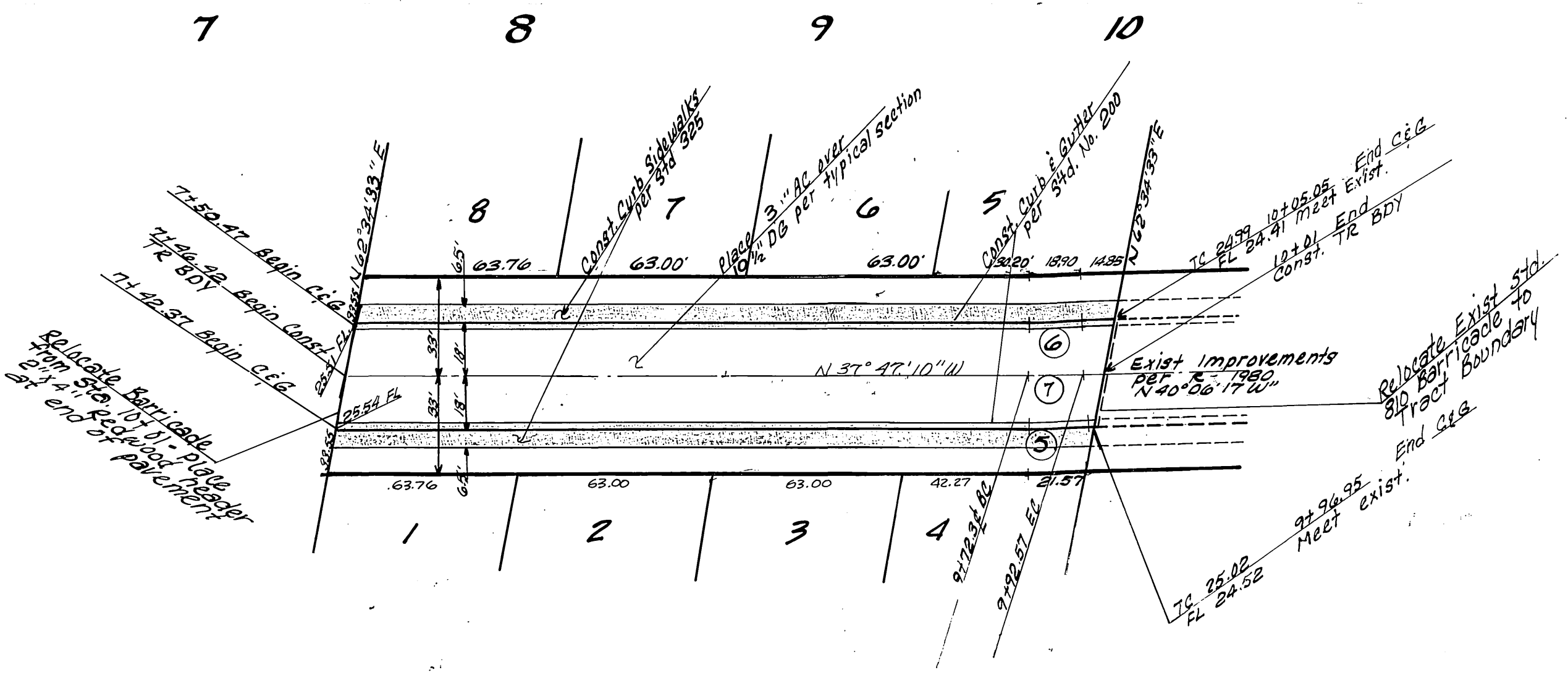
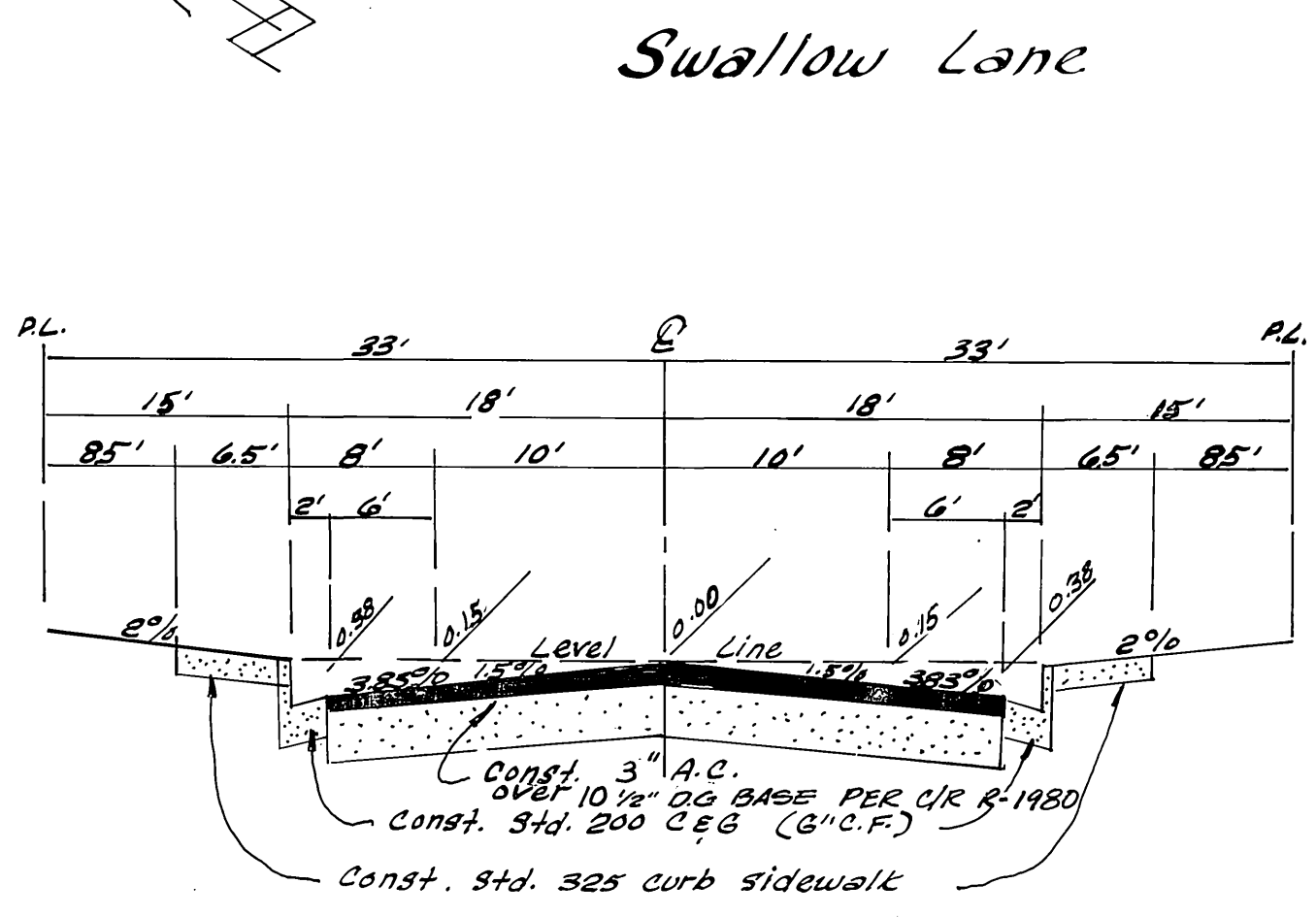


Bench Mark:
 Elev. 714.42 F2-E PK
 Nail in NW curb return
 at La Sierra Avenue &
 Pierce Street per CJK FB
 858 PG 1.



No	R	Δ	L	T
①	27.00	110° 42' 10"	52.17	37.10
②	27.00	85° 24' 26"	41.50	24.66
③	115.00	2° 24' 14"	16.75	6.78
④	10.00	200° 16' 54"	154.13	—
⑤	518.00	2° 19' 07"	20.76	10.48
⑥	482.00	2° 19' 07"	19.51	9.75
⑦	500.00	2° 19' 07"	20.23	10.18



Typical Section Swallow Lane TI-5

GENERAL NOTES:

- "The private Engineer signing these plans is responsible for the accuracy and acceptability of the work hereon. In the event of discrepancies arising during construction, the private Engineer shall be responsible for determining an acceptable solution and revising the plans for approval by the City."
- Construction shall be in accordance with the Standard Specifications for Public Works Construction 1976 Edition and per City of Riverside Standard Drawings.
- All flagged elevations shall be staked in the field by the Engineer.
- Locations and size of drive approaches (Std. 302) to be determined at the time of construction as approved by the Traffic Engineer.
- Curb and gutter to be staked on 3' offset at 25' intervals.
- Traffic control signs must be in place prior to opening streets to traffic.
- Trim edge of existing pavement where new pavement joins to a smooth straight line construct match up paving as shown on the plans.
- See Electrical Plan prepared by the City of Riverside Public Utilities Department for number and location of required street lights.
- It shall be the responsibility of the contractor to clear the right of way in accordance with the provisions of law as it affects each utility including irrigation lines and appurtenances, and at no cost to the City.
- 4" x 4" blockouts for mailboxes required in curb sidewalks.
- The contractor shall contact the Public Service Department (787-7251) to pick up any existing Std. 180 barricades that are being removed. The City's inspector will make final determination on whether a barricade can be relocated.

Plans checked and found to comply with City of Riverside requirements
 By Dee R. Robinson 5/1/79
 C.E. Engineering Date

Esgate Lansing & Assoc
 Civil Engineers
 San Bernardino, Calif.
 Approved By Bruce J. Esgate
 R.C.E. 21884 Date 5-1-79

DESIGNED BY BE DRAWN BY KD CHECKED BY PA

CITY OF RIVERSIDE, CALIFORNIA
 DEPARTMENT OF PUBLIC WORKS
 APPROVED BY [Signature] DATE 5/1/79
 PRINCIPAL ENGINEER
 PARK DEPARTMENT
 TRAFFIC DIVISION
 CHIEF P. W. ENGR. [Signature] DATE 5-21

Street Plan and Profile
 Swallow Lane - 300' NLY
 of Norwood Place
 Tract 9170

PROJECT NO. 78-13
 R-2194
 SHEET 1 OF 1
 FILE NO. 78-13-A

HORIZ. SCALE: 1" = 40' VERT. SCALE: 1" = 4'