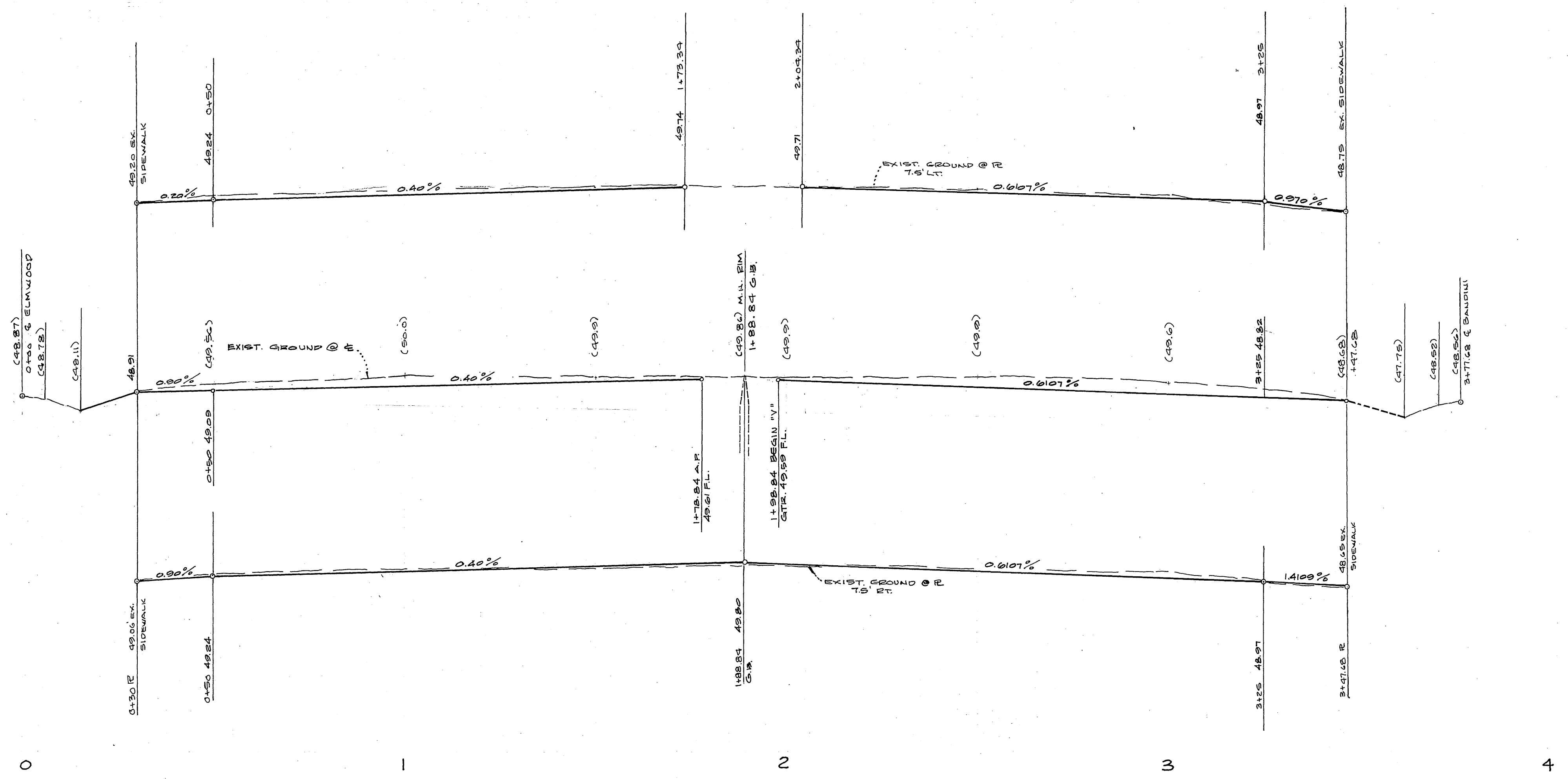


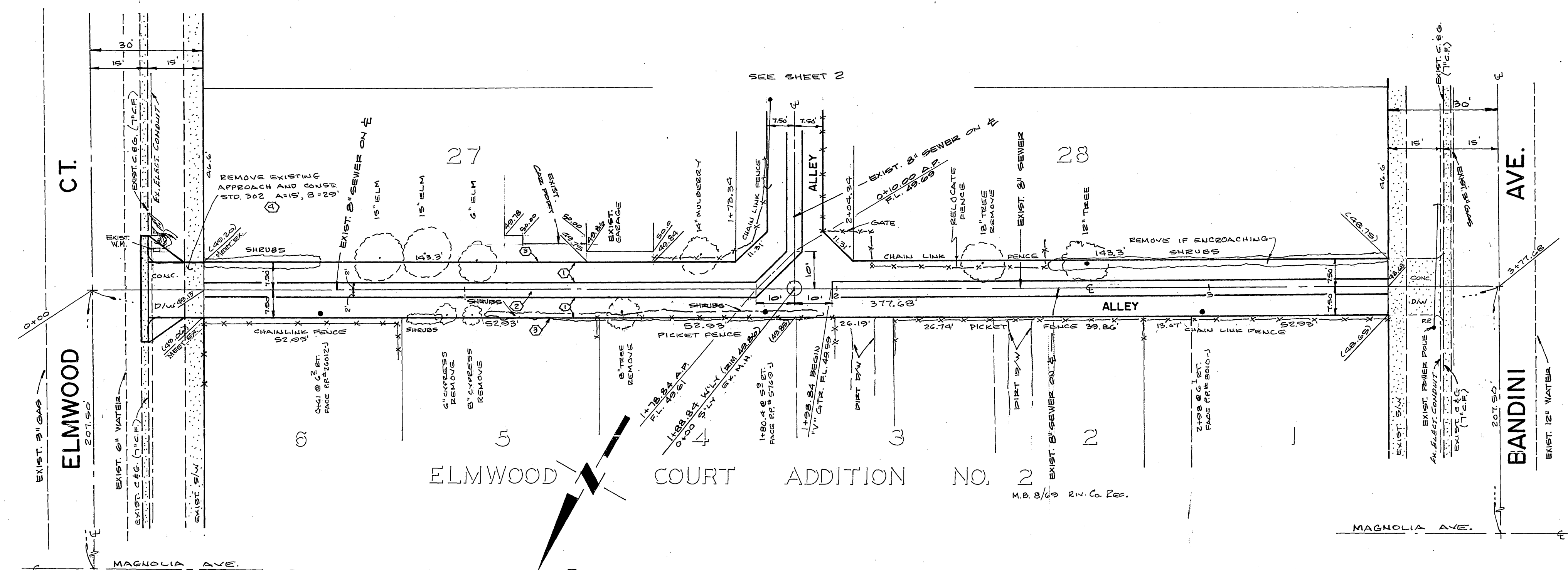
850 Lt.
850 ft.
850 ft.

850 Lt.
850 ft.
850 ft.

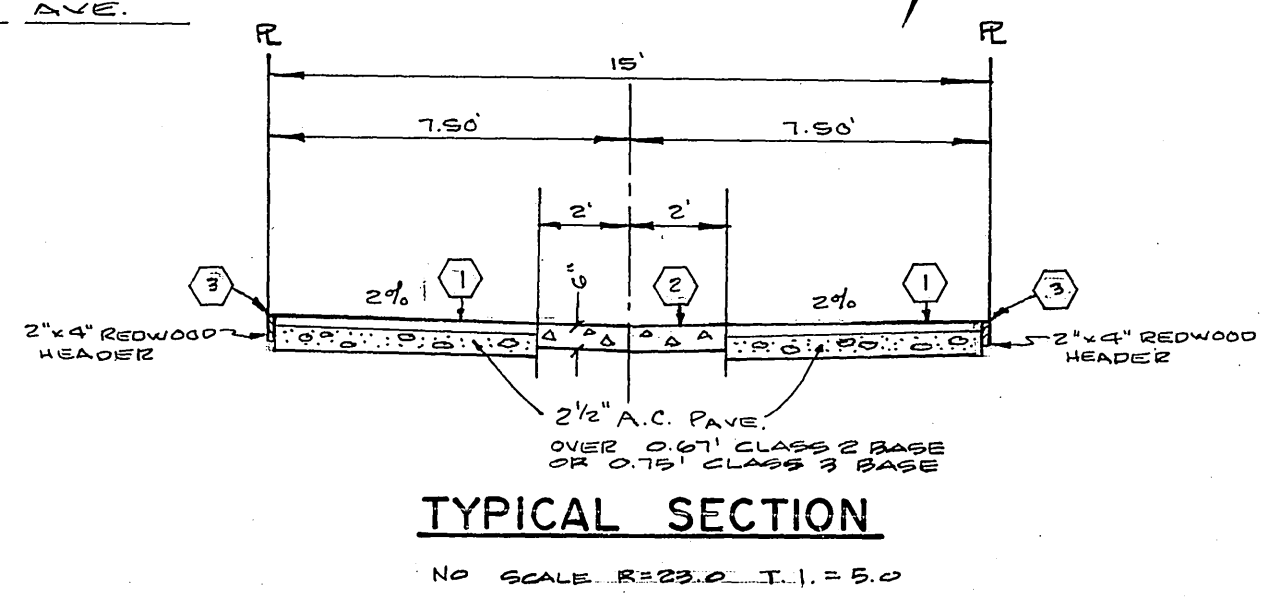


BENCH MARK
H-C BRASS DISK CAPPED AT THE
INTERSECTION OF E BANDINI AVE. AND
E MAGNOLIA AVE. C.R.B. 717/72
ELEV. 876.922

- GENERAL NOTES**
- IT SHALL BE THE RESPONSIBILITY OF THE CONTRACTOR TO CLEAR THE RIGHT OF WAY IN ACCORDANCE WITH THE PROVISIONS OF LAW AS IT AFFECTS EACH UTILITY INCLUDING IRRIGATION LINES AND APPURTENANCES AND AT NO COST TO THE CITY.
 - CONSTRUCTION SHALL BE IN ACCORDANCE WITH THE CITY OF RIVERSIDE, DEPARTMENT OF PUBLIC WORKS, STANDARD DRAWINGS, AND THE STANDARD SPECIFICATIONS FOR PUBLIC WORKS CONSTRUCTION, 1976 EDITION.
 - ALL FINISHED ELEVATIONS SHALL BE STAKED IN THE FIELD BY THE PRIVATE ENGINEER.
 - THE PRIVATE ENGINEER SIGNING THESE PLANS IS RESPONSIBLE FOR THE ACCURACY AND ACCEPTABILITY OF THE WORK HEREON. IN THE EVENT OF DISCREPANCIES ARISING DURING CONSTRUCTION, THE PRIVATE ENGINEER SIGNING THESE PLANS SHALL BE RESPONSIBLE FOR DETERMINING AN ACCEPTABLE SOLUTION AND REVISING THE PLANS FOR APPROVAL BY THE CITY.



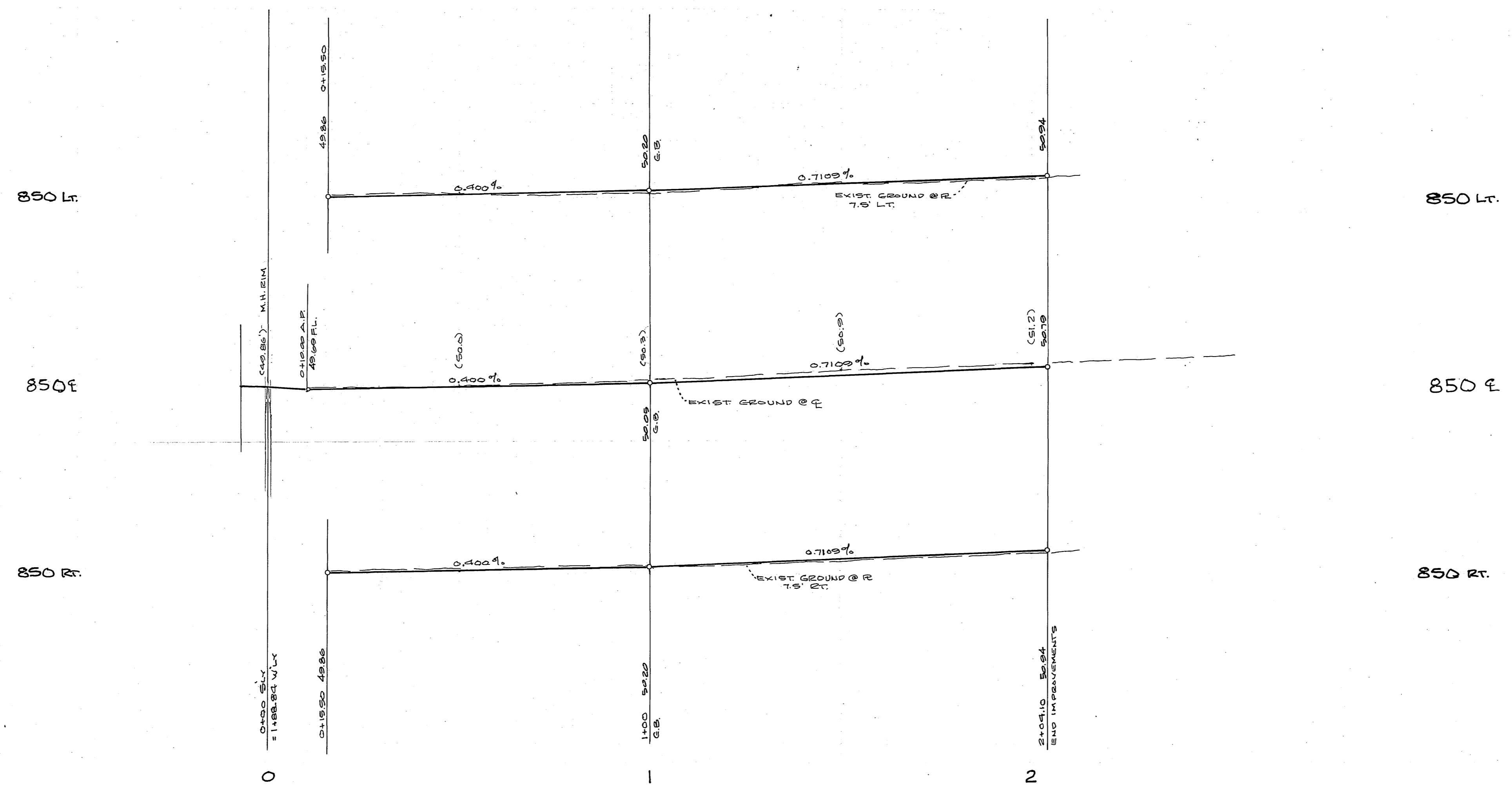
- CONSTRUCTION NOTES**
- CONST 2 1/2" A.C. OVER 18" CLASS II BASE, OR 75" CLASS III BASE.
 - CONST ALLEY VALLEY CUTTER PER STD. NO. 110.
 - CONST 2" X 4" REDWOOD HEADER
 - CONST D/W APPROACH PER STD. NO. 302.



ALBERT A. WEBB ASSOCIATION
CIVIL ENGINEERS
RIVERSIDE, CALIFORNIA
APPROVED: *Robert H. Webb* 5-8-79
7-25

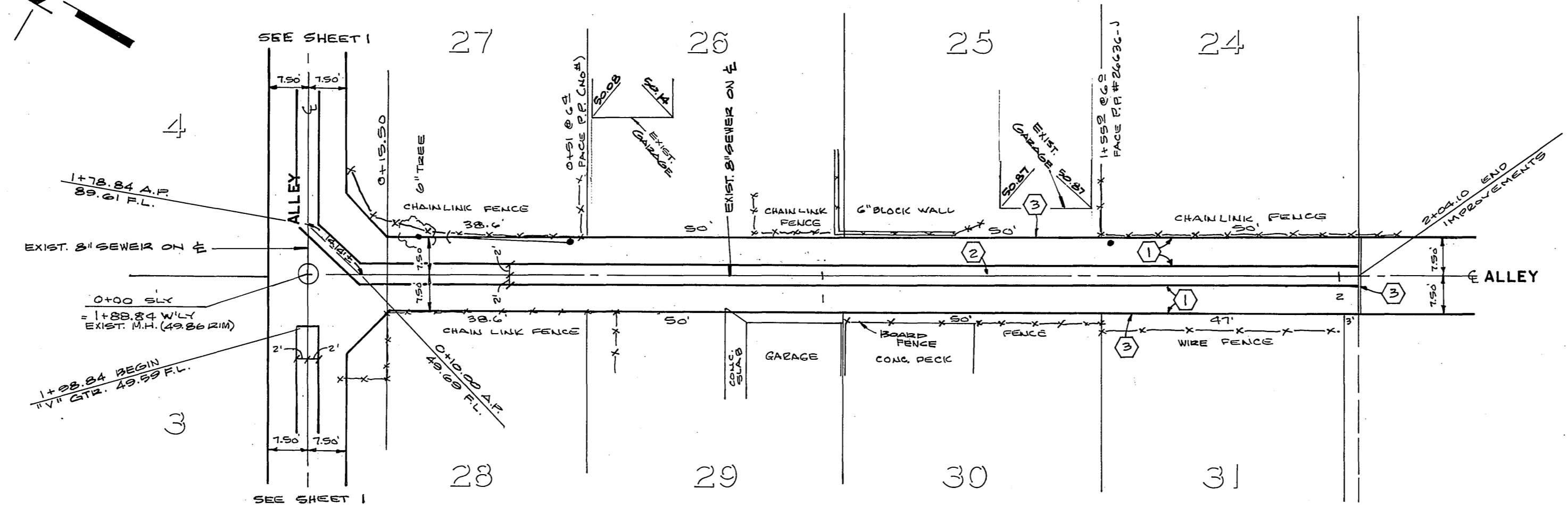
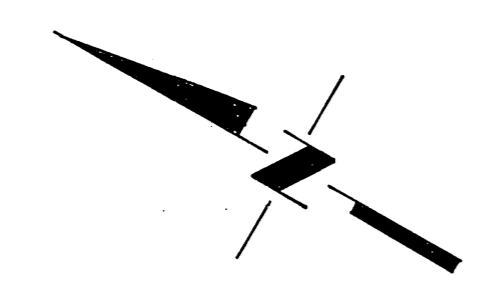
CITY OF RIVERSIDE CALIFORNIA
DEPARTMENT OF PUBLIC WORKS
DATE: 7/26/79

*22 BUILT 7-20-80
ALLEY PLAN AND PROFILE
ELMWOOD CT-BANDINI AVE.
1911 AC ASSESSMENT DISTRICT
#1014
HORIZ.: 1"=20' VERT.: 1"=4'
DRAWING NUMBER: R-2195
1 2
78-93



BENCH MARK
 HG-C BRASS DISK CAPPED AT THE INTERSECTION OF E BANDINI AVE. AND E MAGNOLIA AVE. C.R.F.B. 7/17/76 ELEV. 846.926

SEE SHEET 1 FOR GENERAL NOTES AND CONSTRUCTION NOTES



ELMWOOD COURT ADDITION NO. 2
 M.B. 8/69 Riv. Co. Rec.

ALBERT A. WEBB ASSOCIATES CIVIL ENGINEERS RIVERSIDE, CALIFORNIA APPROVED BY: <i>Albert A. Webb</i> 5-8-79 9876	CITY OF RIVERSIDE, CALIFORNIA DEPARTMENT OF PUBLIC WORKS HORIZ.: 1"=20' VERT.: 1"=4' 7/26/79	*AS BUILT 7-30-80 84-491-054
		ALLEY PLAN AND PROFILE ELMWOOD CT-BANDINI AVE. 1911 ACT ASSESSMENT DISTRICT #EPA SHEET 2 OF 2 79-93