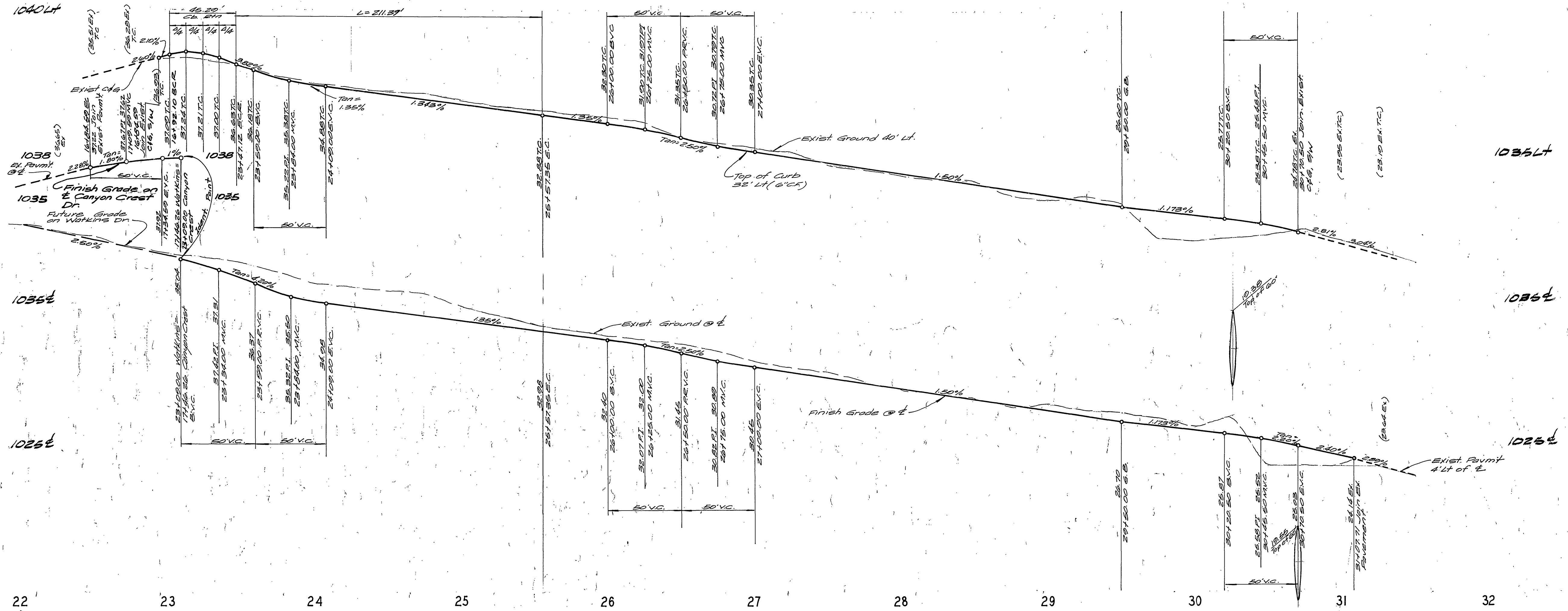


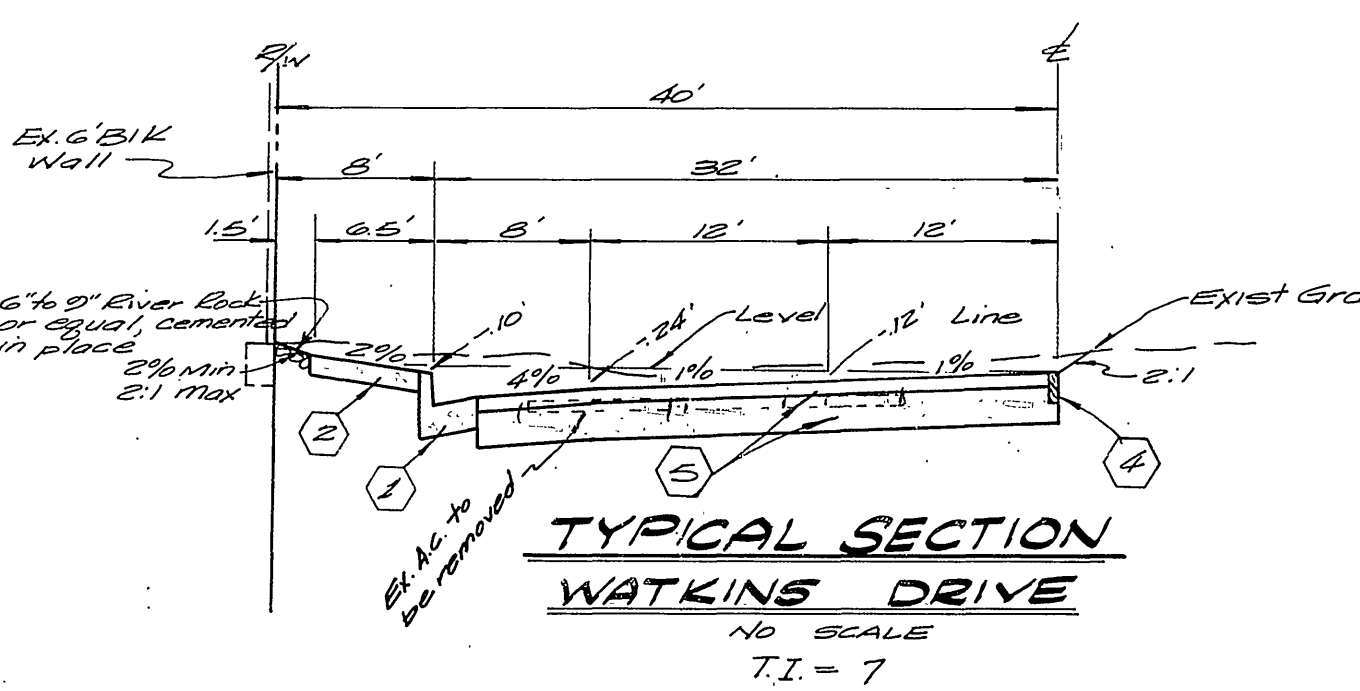
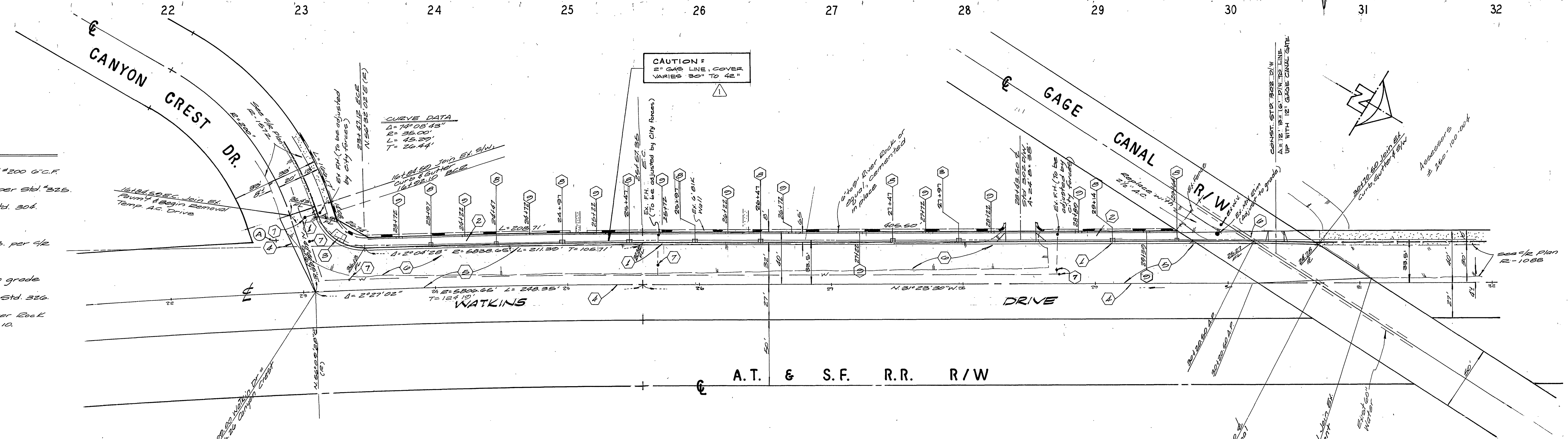
**GENERAL NOTES**

- The private engineer signing these plans is responsible for the accuracy and acceptability of the work herein. In the event of discrepancies arising during construction, the private engineer shall be responsible for determining an acceptable solution and revising the plans for approval by the City.
- It shall be the responsibility of the contractor to clear the right of way in accordance with the provisions of law as it affects each utility including irrigation lines and appurtenances and at no cost to the city.
- Construction shall be in accordance with the City of Riverside, Department of Public Works, Standard Drawings, and the Standard Specifications for Public Works Construction, 1976 Edition.
- Trim edge of existing pavement where new pavement joins to a smooth, straight line. Construct match-up paving as shown on plan.
- Construct driveway approaches per Std. Dwg. 302. Exact size and location to be determined at the time of construction as approved by the Traffic Engineer.
- Curb and gutter shall be staked with 3' offsets at 25' intervals.
- All traffic signs shall be installed prior to opening the street to traffic.
- The subdivider shall arrange for a soil test to be made by a soils engineer after the street has been prepared to rough grade. Depth of base material and d.c. paving shall be determined by the City of Riverside design standards and test procedures.
- All flagged elevations shall be staked in the field by the private engineer.
- See landscaping and Sprinkler Plans for parkway on Watkins Dr.
- Developer to give City Water Division five (5) working days written notice prior to start of construction and 14 days written notice prior to completion of work (787.761).



**CONSTRUCTION NOTES**

- Const. R.C.C. Curb & gutter per Std. #200 G.C.F.
- Const. 6" R.C.C. Curb Sidewalk per Std. #325.
- Const. Wheelchair Ramp per std. 304.
- Place 2"x4" Redwood Header
- Place 4" A.C. over 5" C.I. 3 A.B. per 1/2 Dwg. E-1088
- Remove existing A.C.
- Adjust existing Water Valve to grade By City Forces
- Const. Tree Well and Cover per Std. 330.
- Leave out a 15' x 4' area of Ever Redk for planting. See General Note 10.



**STREET NAME SIGN SCHEDULE**

(A)	WATKINS DR	2000
(A)	CANYON CREST DR	2000

SOUTHERN CALIFORNIA GAS CO.

*OR Mc Gowan* 1-24-80

Gage Canal Co.

*John M. Gage* 7/15/79

City of Riverside

Domestic & Irrigation System

*Joe Fred Lent* 9/9/79

Chief Utilities Engineer - Water

5/18/79

9/23/79

77393

Lawrence Mulhearn

1023

ELT

ELT

PA

Planning Dept

**BENCH MARK**

U.S.G.S. 6144 - Standard brass disc in the wall of conc. of Highland Grammar School 118' East of East rail of A.T. & S.F. Elev. = 1077.842 INDEXED R.M.F.

**STREET PLAN & PROFILE**

WATKINS DRIVE

from station 23+00 to station 31+08

TRACT NO. 1183B

HORIZ. 1"=40' VERT. 1"=4'

77393-A

3060.0 File