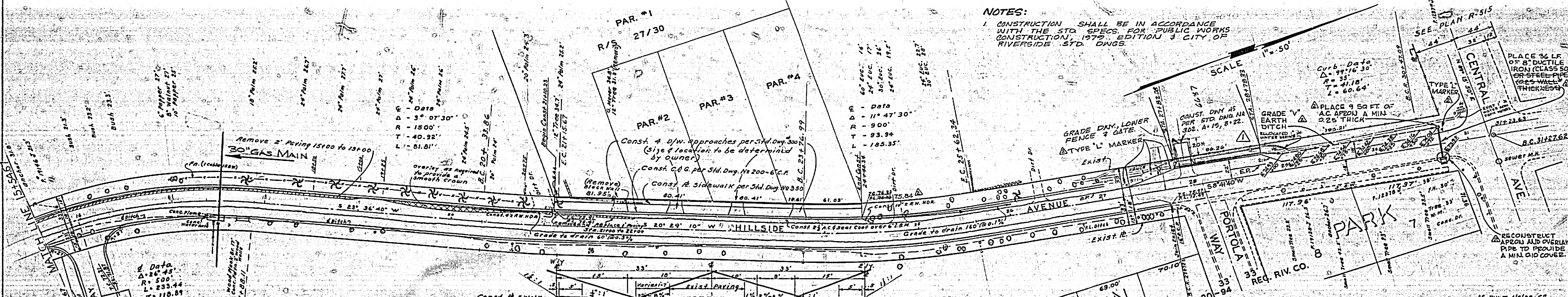


B.M. 34 L IN N.E. COR. RET. HILLSIDE L.A. 800A. E.L. 773.82
 F.D. E. 34.40, 48.37
 SCALES: HOR. 1" = 50'
 VERT. 1" = 5'

DATE	DESCRIPTION

NOTES:
 1. CONSTRUCTION SHALL BE IN ACCORDANCE WITH THE STD. SPEC. FOR PUBLIC WORKS CONSTRUCTION, 1972 EDITION & CITY OF RIVERSIDE STD. DNGS.



REVISIONS		CITY OF RIVERSIDE - CALIFORNIA DEPARTMENT OF PUBLIC WORKS
MARK	DATE	
Δ	9/2/81	WHICH IMPROVEMENTS ARE TO BE MADE AT STA. 30+72.17 TO 30+72.17 AND A DITCH 10' WIDE AT STA. 30+72.17 TO 30+72.17
Δ	2/5/82	ADDED 6" PIPE AT STA. 30+72.17 AND A DITCH 10' WIDE AT STA. 30+72.17 TO 30+72.17

DESIGNED BY: [Signature]
 CHECKED BY: [Signature]
 APPROVED BY: [Signature]
 ASSISTANT CITY ENGINEER

DATE: 4/11/82

DATE	DESCRIPTION

R-225
 J.P.