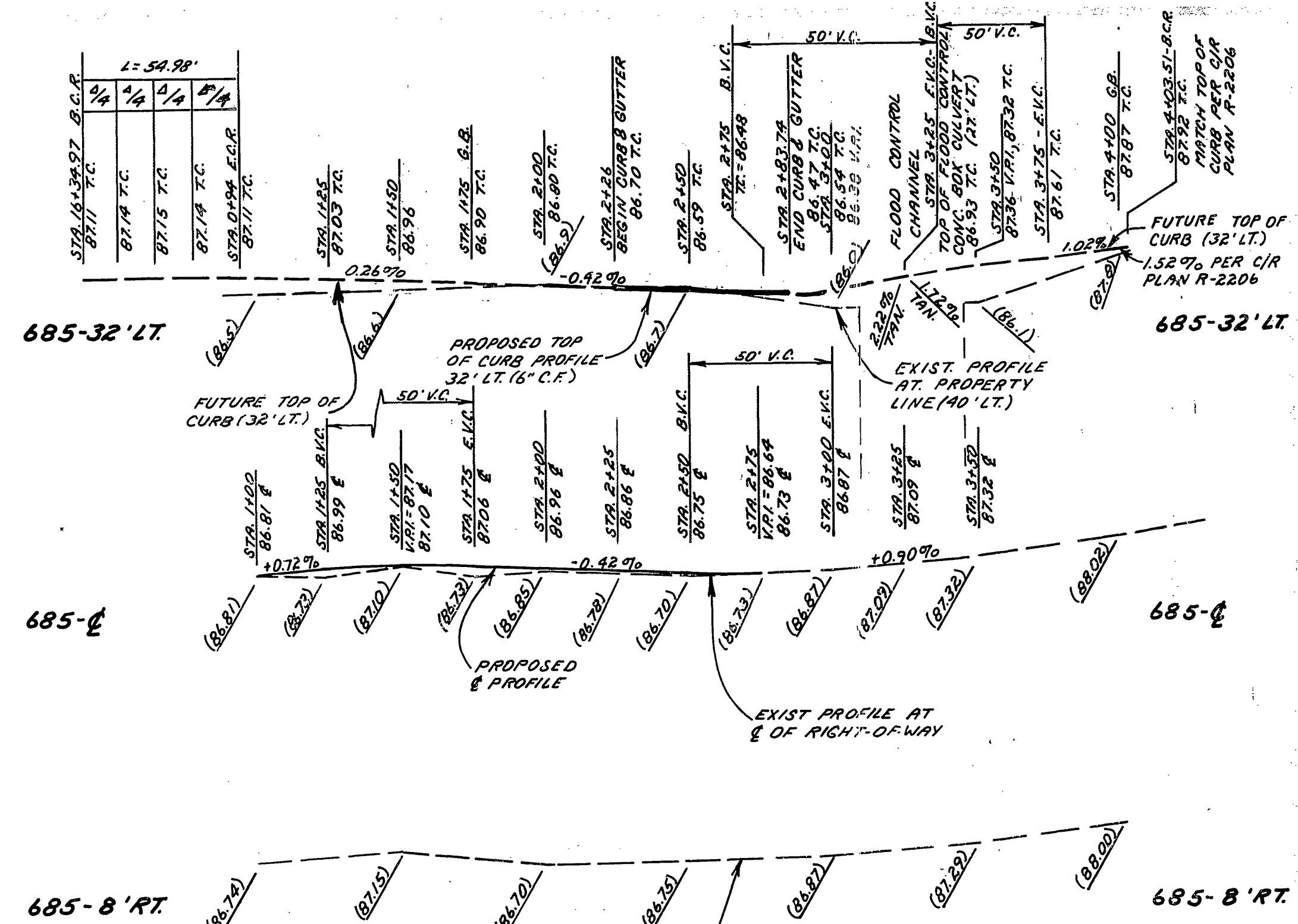


**MAGNOLIA AVENUE PROFILE**

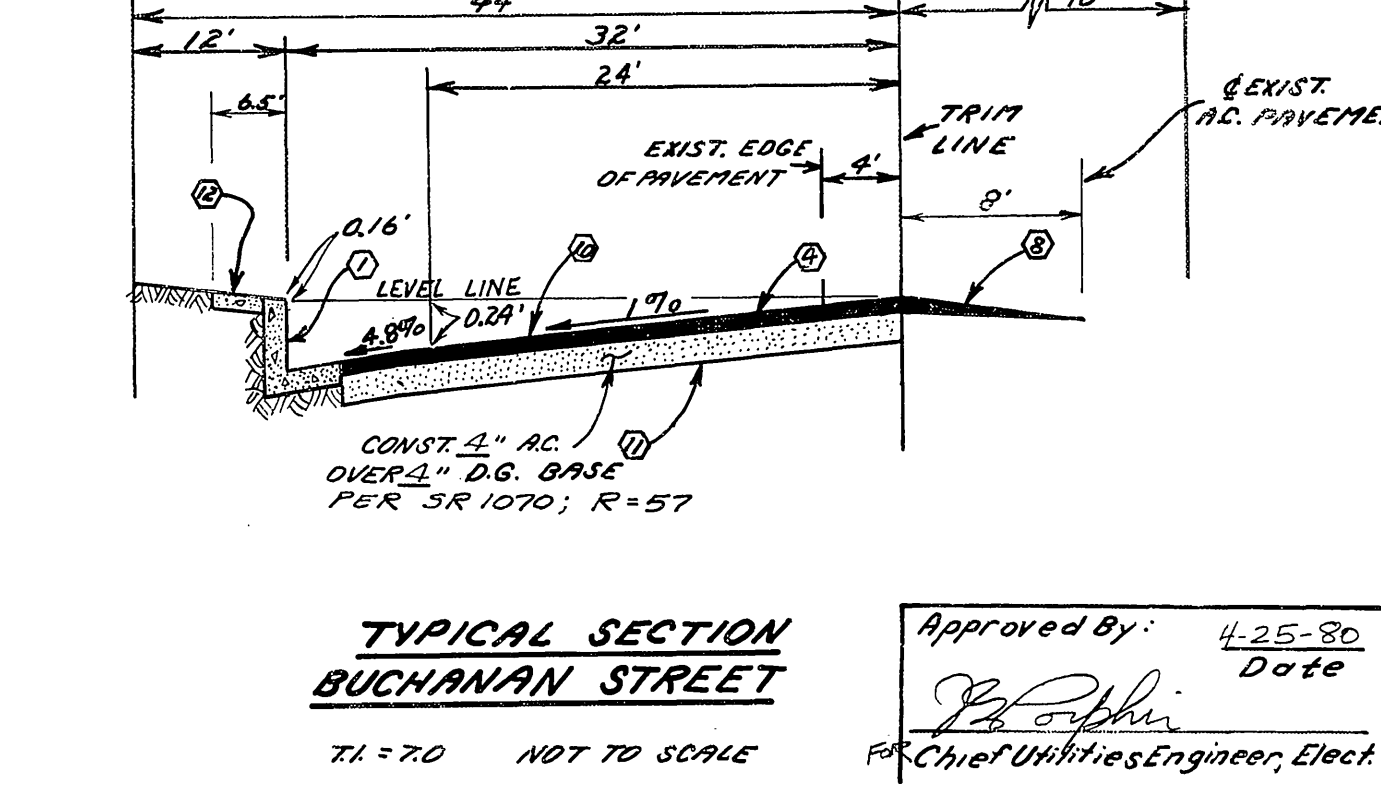
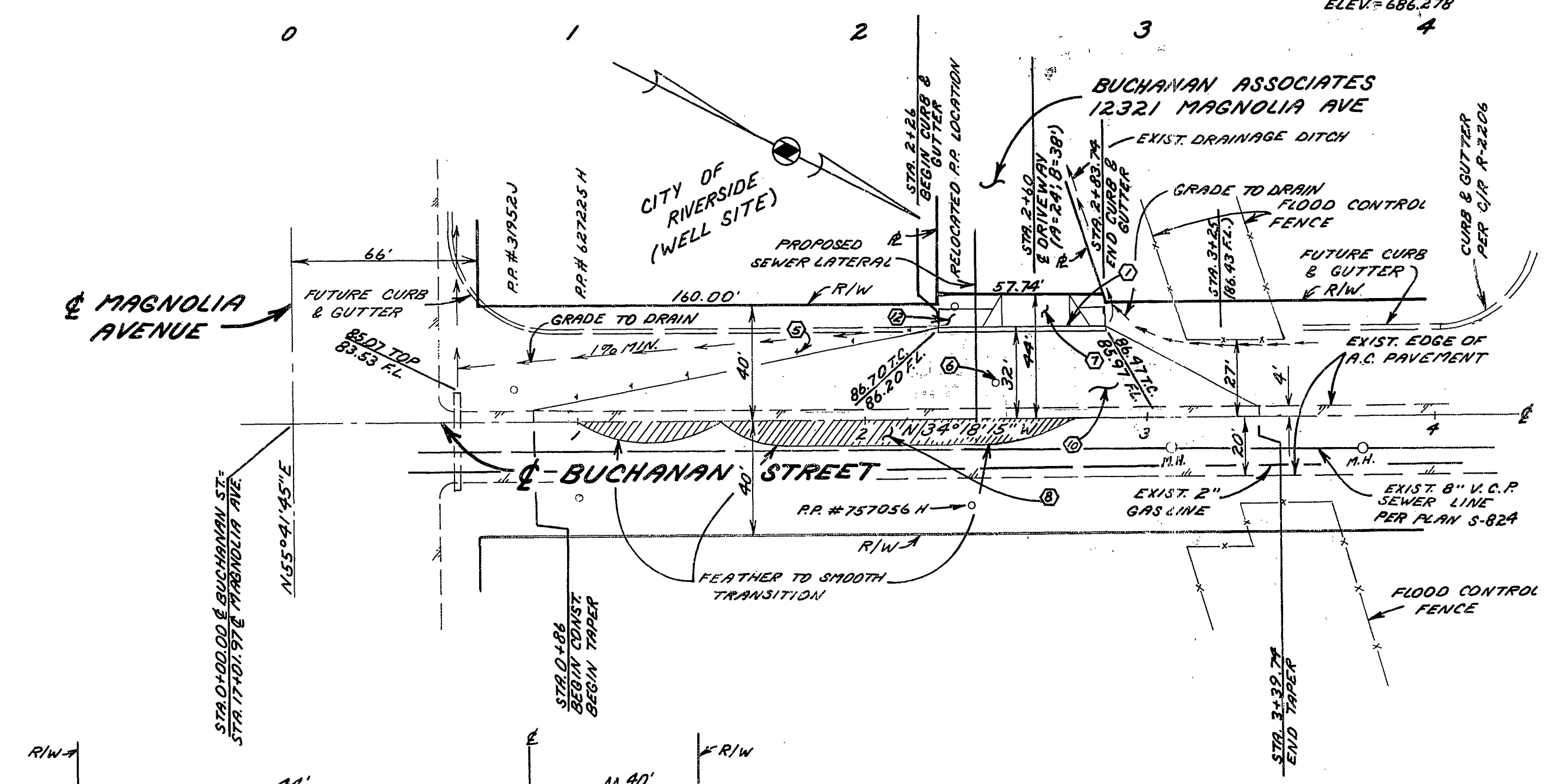
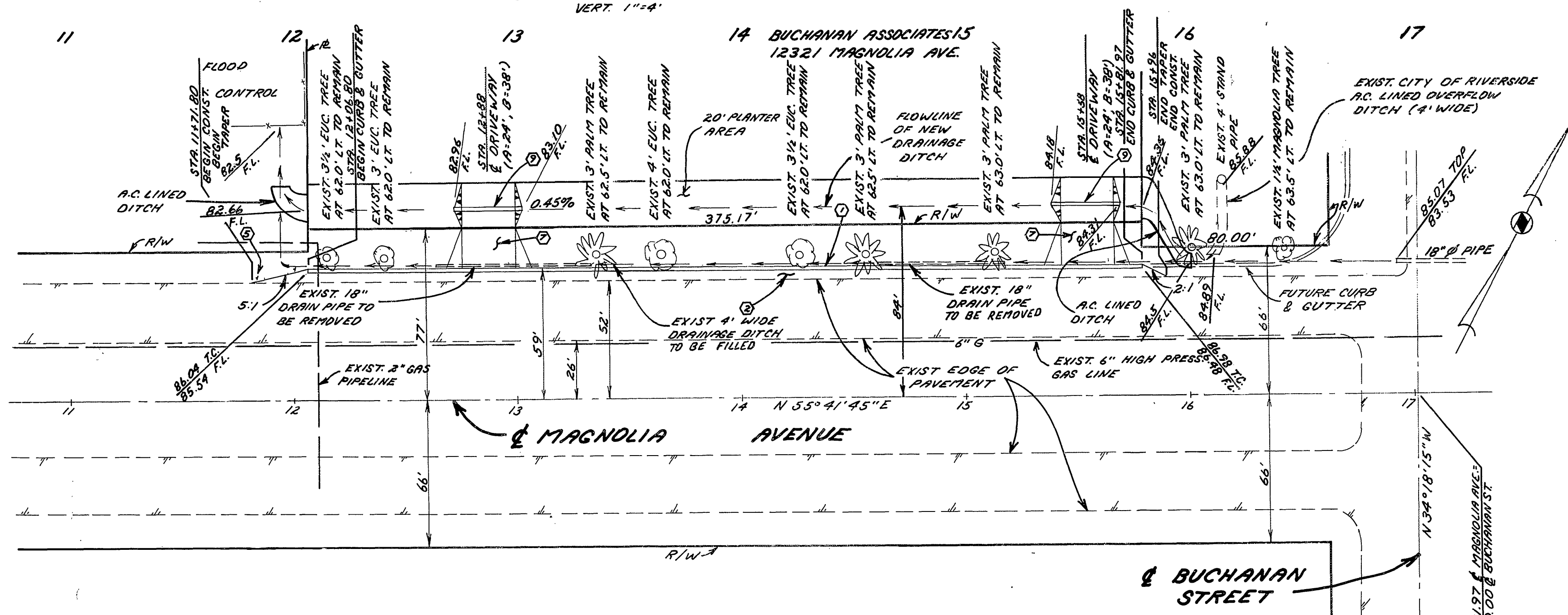
SCALE: HORIZ. 1"=40'  
VERT. 1"=4'



**BUCHANAN STREET PROFILE**

SCALE: HORIZ. 1"=40'  
VERT. 1"=4'

**BENCHMARK**  
P.K. MARK AND TAG ON  
NEAD WALL AT N.W. CORNER  
OF MAGNOLIA AVE. &  
BUCHANAN ST. CITY OF  
RIVERSIDE # E-2-E.  
I.C. 739456  
ELEV. 686.278



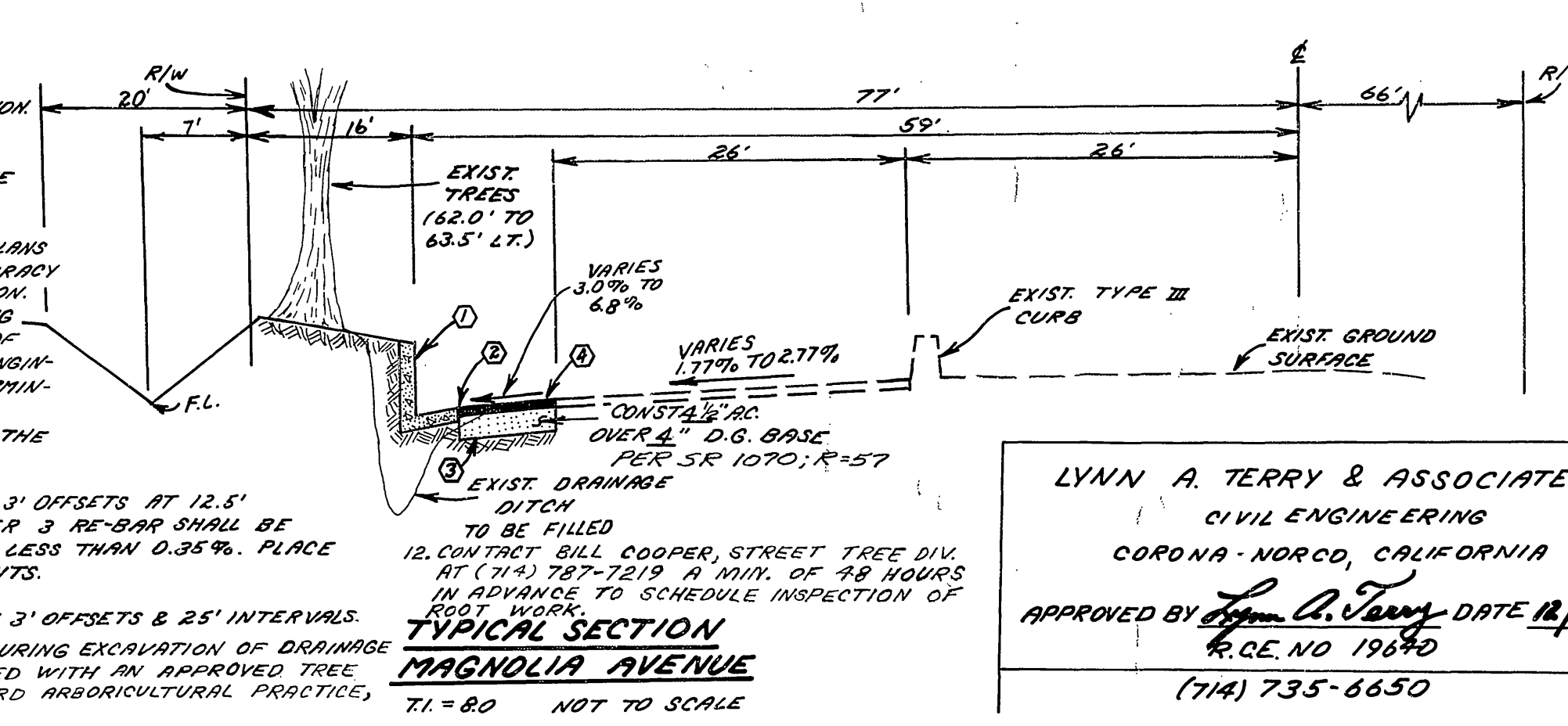
**TYPICAL SECTION  
BUCHANAN STREET**

Approved By: *[Signature]* 4-25-80  
Date  
Chief Utilities Engineer, Elect

CONSTRUCTION NOTES & QUANTITY ESTIMATES			
ITEM	MAGNOLIA	BUCHANAN	TOTAL
1. CONST. CURB & GUTTER PER STD. 200 TYPE 2 (6" C.F.)	375 L.F.	58 L.F.	433 L.F.
2. CONST. 4" A.C. ON MAGNOLIA AVE.	1944 S.F.		1944 S.F.
3. CONST. 4" D.G. BASE ON MAGNOLIA AVE.	1944 S.F.		1944 S.F.
4. CONST. FOG SEAL	1944 S.F.	5260 S.F.	7204 S.F.
5. INSTALL TYPE "L" PARKERS (20" C.C.)	2 EA.	7 EA.	9 EA.
6. P.P. # 30153 J TO BE RELOCATED AS SHOWN		1 EA.	1 EA.
7. CONST. DRIVEWAY APPROACH PER STD. 302	2 EA.	1 EA.	3 EA.
8. INSTALL OVERLAY		8.6 TONS	8.6 TONS
9. INSTALL 18" R.C.P. (D=2000)	60 L.F.		60 L.F.
10. CONST. 4" A.C. ON BUCHANAN ST.		5260 S.F.	5260 S.F.
11. CONST. 4" D.G. BASE ON BUCHANAN ST.		5260 S.F.	5260 S.F.
12. CONST. CURB SIDEWALK PER STD. 302		354 S.F.	354 S.F.

\* AS BUILT 4-0-81  
STREET IMPROVEMENT PLANS  
MAGNOLIA AVENUE  
FROM 106' TO 530' WEST OF BUCHANAN  
BUCHANAN STREET  
FROM 86' TO 340' NORTH OF MAGNOLIA  
BUILDING PERMIT FOR 12321 MAGNOLIA AVE. **R-2280**

- GENERAL NOTES**
- IT SHALL BE THE RESPONSIBILITY OF THE CONTRACTOR TO CLEAR THE RIGHT OF WAY IN ACCORDANCE WITH THE PROVISIONS OF LAW AS IT AFFECTS EACH UTILITY INCLUDING IRRIGATION LINES AND APPURTENANCES AND AT NO COST TO THE CITY.
  - CONSTRUCTION SHALL BE IN ACCORDANCE WITH THE CITY OF RIVERSIDE, DEPARTMENT OF PUBLIC WORKS, STANDARD DRAWINGS, AND THE STANDARD SPECIFICATIONS FOR PUBLIC WORKS CONSTRUCTION, 1979 EDITION.
  - TRIM EDGE OF EXISTING PAVEMENT WHERE NEW PAVEMENT JOINS TO A SMOOTH STRAIGHT LINE. CONSTRUCT MATCH-UP PAVING AS SHOWN ON PLAN AND OVERLAY PAVING AS DIRECTED IN THE FIELD TO PRODUCE A SMOOTH SECTION. ENGINEER ESTIMATES OVERLAY TO BE 8.6 TONS.
  - CONSTRUCT DRIVEWAY APPROACHES PER STD. DWG. 302. EXACT SIZE & LOCATION TO BE DETERMINED AT THE TIME OF CONSTRUCTION AS APPROVED BY THE TRAFFIC ENGINEER.
  - QUANTITIES SHOWN ARE FOR INFORMATION ONLY AND THE CITY OF RIVERSIDE IS NOT RESPONSIBLE FOR THEIR ACCURACY.
  - CONTRACTOR IS TO VERIFY EXISTING SEWER ELEVATION PRIOR TO CONSTRUCTION.
  - ALL FLAGGED ELEVATIONS SHALL BE STAKED IN THE FIELD BY THE PRIVATE ENGINEER.
  - THE PRIVATE ENGINEER SIGNING THESE PLANS IS RESPONSIBLE FOR ASSURING THE ACCURACY AND ACCEPTABILITY OF THE WORK HEREON. IN THE EVENT OF DISCREPANCIES ARISING DURING CONSTRUCTION, AS A RESULT OF ERRORS OR OMISSIONS, THE PRIVATE ENGINEER SHALL BE RESPONSIBLE FOR DETERMINING AN ACCEPTABLE SOLUTION AND REVISING THE PLANS FOR APPROVAL BY THE CITY OF RIVERSIDE.
  - CURB & GUTTER SHALL BE STAKED WITH 3' OFFSETS AT 12.5' INTERVALS AND TWO ROWS OF NUMBER 3 RE-BAR SHALL BE PLACED IN GUTTER WHERE GRADE IS LESS THAN 0.35%. PLACE 3/4" DOWEL PINS AT EXPANSION JOINTS.
  - CURB & GUTTER SHALL BE STAKED WITH 3' OFFSETS & 25' INTERVALS.
  - ALL ROOTS OVER 1" ENCOUNTERED DURING EXCAVATION OF DRAINAGE DITCH SHALL BE CLEARLY CUT & SEALED WITH AN APPROVED TREE SEALANT IN ACCORDANCE WITH STANDARD ARBORICULTURAL PRACTICE. INSPECTION IS REQUIRED.



**TYPICAL SECTION  
MAGNOLIA AVENUE**

LYNN A. TERRY & ASSOCIATES  
CIVIL ENGINEERS  
CORONA, NORCO, CALIFORNIA  
APPROVED BY *[Signature]* DATE 12/11/79  
R.C.E. NO 19640  
(714) 735-6650

L.A.T. J.E.R. J.E.R./P. PLANNING