

5. GRADING AT HEAD OF S/W, IF NECESSARY, TO MEET EX. GROUND AT E/W.

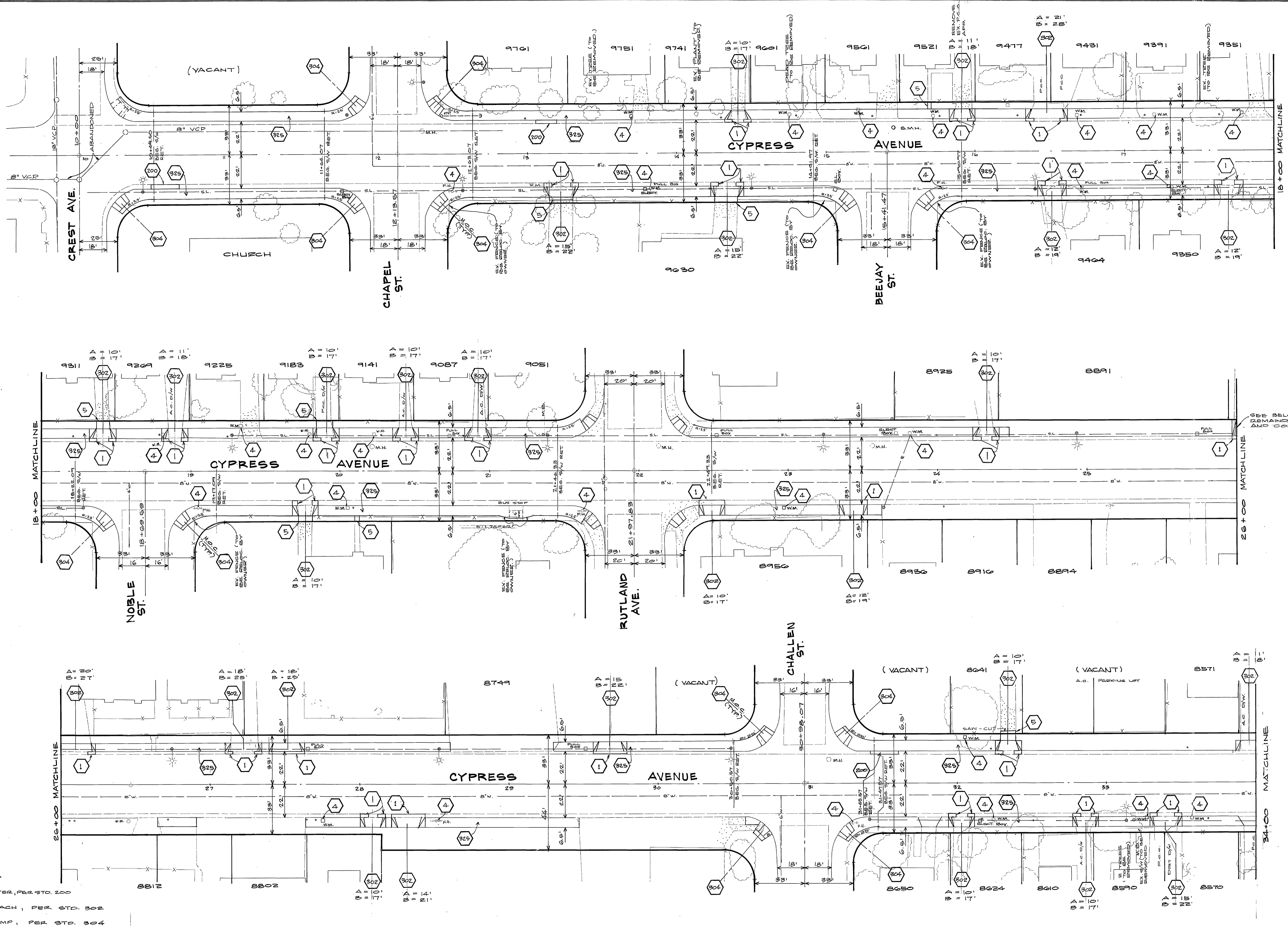
6. CONTRACT PARK PROJECTS INSPECTORS A MIN. OF 48 HOURS (2 WORKING DAYS IN ADVANCE AT 787-7223 TO SPOT LOCATION IN THE FIELD FOR PALM TREE RELOCATION INTO BEYANT PARK.

GENERAL NOTES

- CONSTRUCTION SHALL BE IN ACCORDANCE WITH THE CITY ENGINEERING DEPARTMENT'S STANDARD SPECIFICATIONS FOR PUBLIC WORKS (CONSTRUCTION), 1978 EDITION, AND CITY OF RIVERSIDE STD. DRAWINGS.
- CONTRACTOR TO RESET ANY STREET NAME AND TRAFFIC SIGNS.
- CONTRACTOR TO GIVE CITY WATER DIVISION FIVE (5) WORKING DAYS WRITTEN NOTICE PRIOR TO ANY CLOSURE OF CYPRESS AVENUE. CITY THEN (10) WORKING DAYS FOR COMPLETION OF WORK. (787-7411)
- CONTRACTOR TO ADJUST STREET LIGHT PULL BOXES AND STREET LIGHT FOUNDATION CAPS TO NEW SIDEWALK GRADE AS REQUIRED.

CONSTRUCTION LEGEND

- 302 REMOVE AND REPLACE CURB & GUTTER, PER STD. 200
- 304 CONSTRUCT DRIVEWAY APPROACH, PER STD. 302
- 304 CONSTRUCT WHEELCHAIR RAMP, PER STD. 304
- 325 CONSTRUCT SIDEWALK, PER STD. 325
- 1 REMOVE CURB AS REQUIRED AND REPLACE TO FORM DEPRESSION (B=) AS NOTED, PER STD. 302.
- 2 CONSTRUCT A.C. DWT., LOCATION AS SHOWN.
- 4 RELOCATE FENCE (BY OWNER).
- 4 ADJUST FIRE HYDRANT OR WATER METER TO GRADE (BY CITY FORCES)
- 5 CONST. MATCHUP CONCRETE FROM BACK OF S/W TO EXIST. PAVING.



CITY OF RIVERSIDE
DOMESTIC SYSTEMS

Fred Rantz 10/10/80
WATER SYSTEMS MANAGER DATE

ALBERT A. WEBB ASSOCIATES
CIVIL ENGINEERS
RIVERSIDE, CALIFORNIA

APPROVED BY *Albert A. Webb* DATE 6/22/80
R.E. No. 9876

W.O. 80-21 FOR CITY OF RIVERSIDE F.B. 1013

MARK	REVISIONS	APPR.	DATE

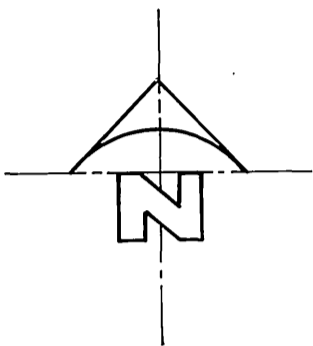
CITY OF RIVERSIDE, CALIFORNIA
DEPARTMENT OF PUBLIC WORKS

APPROVED BY *John C. White*
PRINCIPAL ENGINEER DATE 11/12/80
PARK DEPARTMENT DATE 11/12/80
TRAFFIC DIVISION DATE 11/12/80
CHIEF P. W. ENGR. DATE 11/12/80

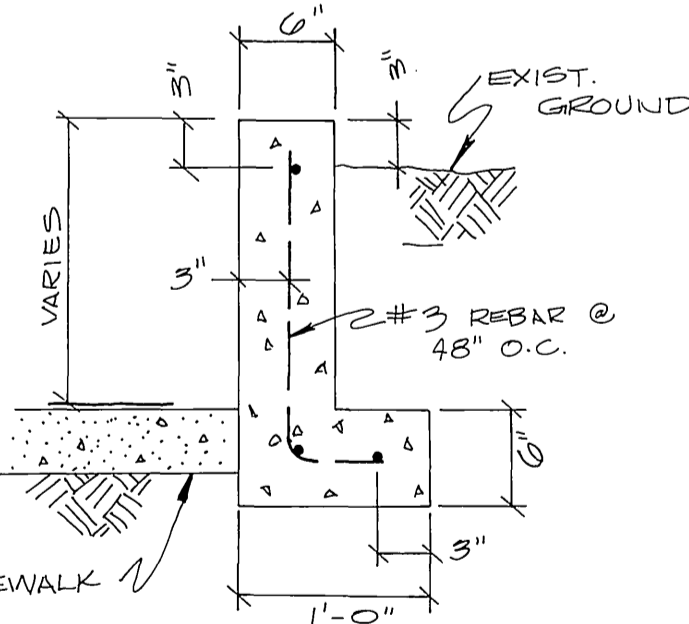
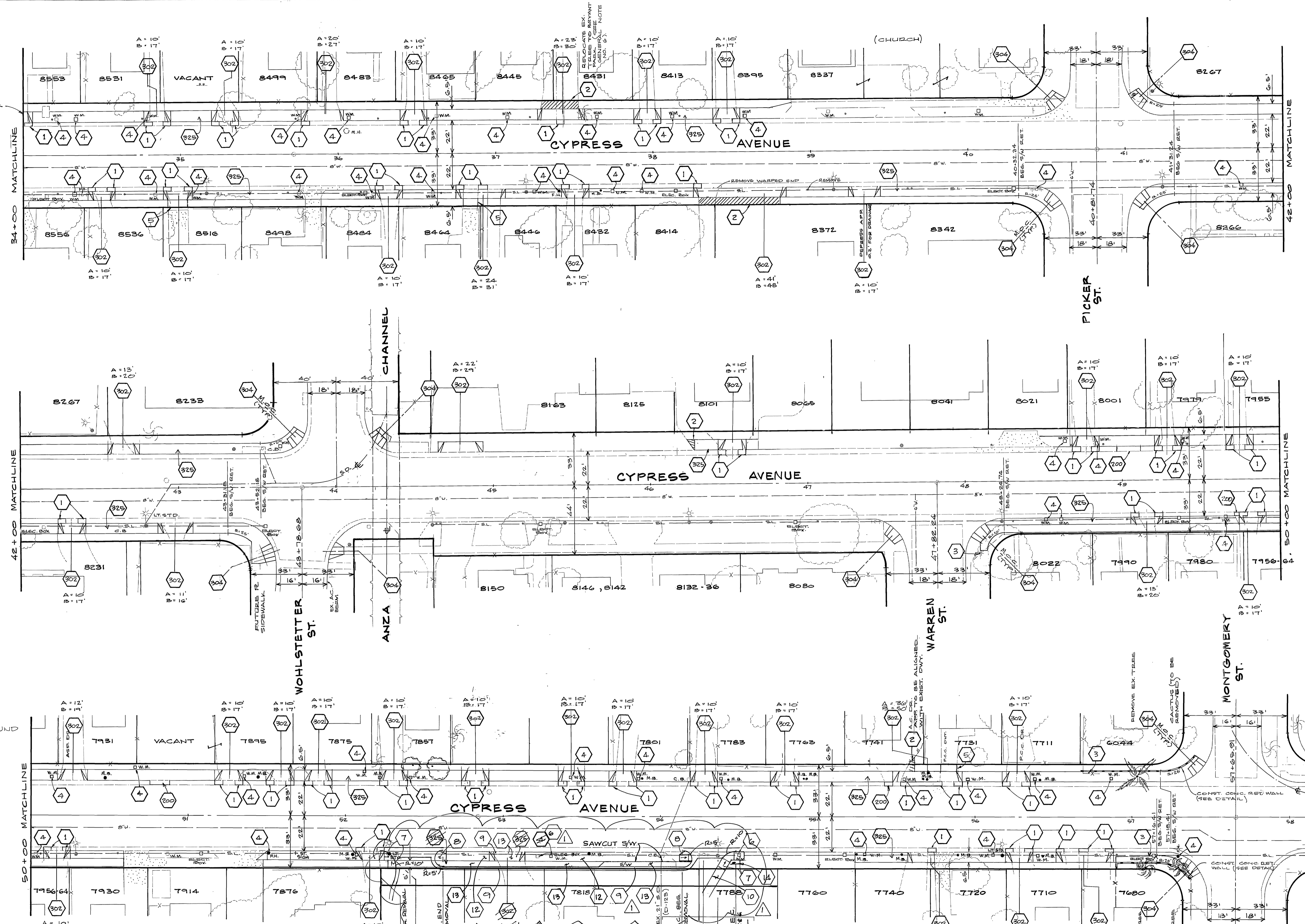
H.C.D. SIDEWALKS
CYPRESS AVENUE
MONTGOMERY ST. TO CREST AVE.

SCALE: 1" = 30'

INDEXED 8LD
ACCOUNT No. 15-550-418
DRAWING NUMBER
R-2285
SHEET 1 OF 2
80-21



SEE SHT. 1 FOR REMAINDER OF D/W AND CONST. INFO



NOTE: HORIZONTAL REBAR TO BE #3

CONC. RETAINING WALL
DETAIL
NO SCALE.

- CONSTRUCTION NOTES**
- 1 EXIST. IMP. TO BE RELOCATED.
 - 2 CONST. ACCESS RAMP PER STD. DWG. 304, TYPE I. --- 4 EA.
 - 3 CONST. ACCESS RAMP PER STD. DWG. 304, TYPE III. --- 2 EA.
 - 4 CONST. 6" CURB & GUTTER PER STD. DWG. 200, TYPE I. --- 215 LF
 - 5 CONST. 6" CURB ONLY PER STD. DWG. 200, TYPE II. --- 20 LF
 - 6 CONST. CROSS-GUTTER PER STD. DWG. 220, W=6". --- 290 SF
 - 7 CONST. SIDEWALK PER STD. DWG. 325. --- 115 SF
 - 8 EXIST. IMP. TO BE REMOVED
 - 9 INSTALL "EXIT ONLY" SIGN PER CITY STD. --- 1 EA.

REVISION Δ PREPARED UNDER THE SUPERVISION OF:

Freddy Irimio 6/21/06

FREDDY IRIMIO, P.E. 60874
 INY CONSULTING ENG.
 3544 UNIVERSITY AVE.
 RIVERSIDE, CA 92501 PH. 951-687-2729
 BUS. CERT. NO. 106198, EXP. 1/1/07

CITY OF RIVERSIDE DOMESTIC SYSTEMS

APPROVED BY: *Albert A. Webb* DATE: 6/27/06
 R.E. No. 2876

APPROVED BY: *Fred Pant* DATE: 10/8/00
 WATER SYSTEMS MANAGER

ALBERT A. WEBB ASSOCIATES
 CIVIL ENGINEERS
 RIVERSIDE, CALIFORNIA

APPROVED BY: *Albert A. Webb* DATE: 6/27/06
 R.E. No. 2876

DESIGNED BY: *Barnes* DRAWN BY: *Guillen* CHECKED BY: *...*

CITY OF RIVERSIDE, CALIFORNIA
 DEPARTMENT OF PUBLIC WORKS

APPROVED BY: *...* DATE: 11/12/00
 DIRECTOR OF PUBLIC WORKS

H.C.D. SIDEWALKS
 CYPRESS AVENUE
 MONTGOMERY ST. TO CHEST AVE.

SCALE: 1" = 30'

ACCOUNT No. 15-550-498
 DRAWING NUMBER
R-2285
 SHEET 2 OF 2
 80-21