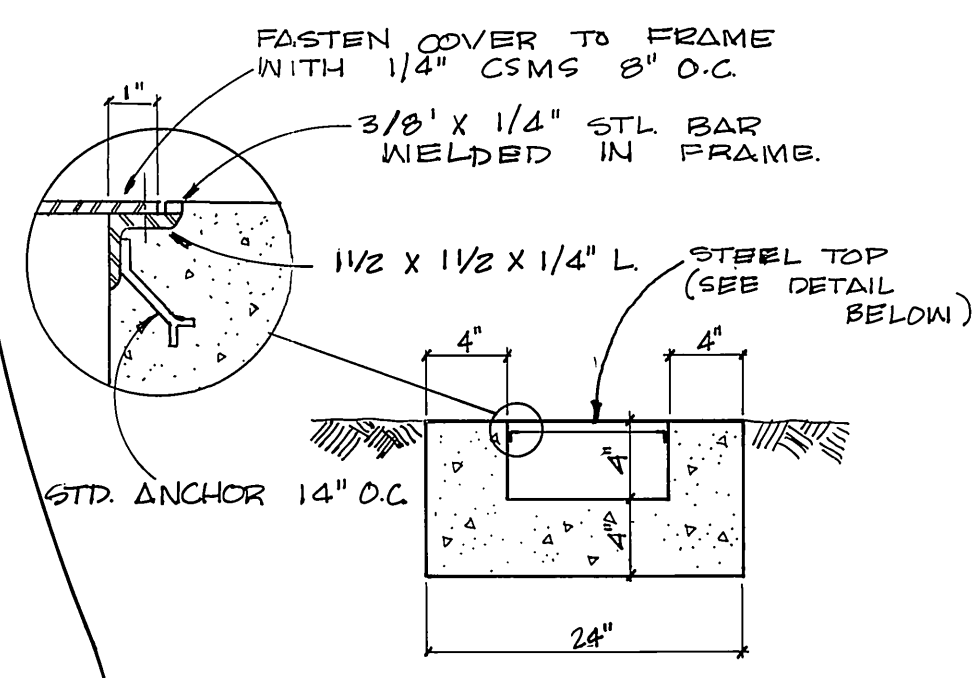
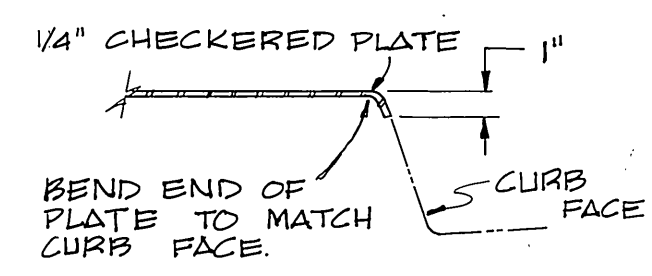


CURVE DATA

R	= 27.00'
Δ	= 92° 08' 15"
L	= 43.42'
T	= 28.03'



REMOVE EXIST. & REPLACE WITH ASPHALT PAVING WITHIN THE SHADED AREA. NEW PAVING SHALL MATCH THE EXIST. SLOPE AND GRADE OF THE STREET. THE PAVEMENT SECTION SHALL BE .21' AC OVER .87' DG. BASE.



GENERAL NOTES:

- CONSTRUCTION SHALL BE IN ACCORDANCE WITH THE CITY OF RIVERSIDE, DEPARTMENT OF PUBLIC WORKS, STANDARD DRAWINGS, AND THE STANDARD SPECIFICATIONS FOR PUBLIC WORKS CONSTRUCTION, 1979 EDITION.

CONSTRUCTION NOTES:

- CONTRACTOR SHALL REMOVE AND REPLACE SIDEWALK PER STD. DWG. 325.
- CONTRACTOR SHALL REMOVE AND REPLACE CURB & GUTTER PER STD. DWG. 200.
- CONSTRUCT WHEEL CHAIR RAMP AS SHOWN.
- CONSTRUCT WHEEL CHAIR RAMP PER STD. DWG. 304.

CITY OF RIVERSIDE PUBLIC WORKS DEPARTMENT		H.C.D. LA SIERRA AREA BRANIGAN WAY		ACCOUNT NO. 15 - 550 - 531 R-2339
APPROVED BY PRINCIPAL ENGINEER PARK DEPARTMENT TRAFFIC DIVISION CHIEF P.W. ENGINEER	BY DATE N/A 12/31 1/2/81	APPROVED BY <i>William D. Gardner</i> PUBLIC WORKS DIRECTOR	NORTHLY SIDE, BETWEEN MOBLEY AVENUE & MEREDITH STREET	
DESIGNED BY DRAWN BY CHECKED BY	REVISIONS APPR. DATE	DATE 1-6-81	SHEET ONE OF ONE HORIZ. SCALE: 1" = 20' VERT. SCALE: 1" =	