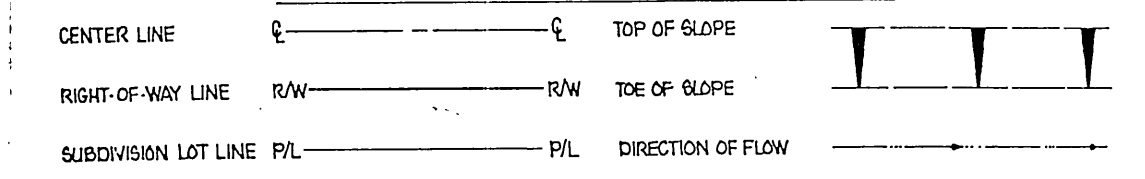


**CONSTRUCTION LEGEND**

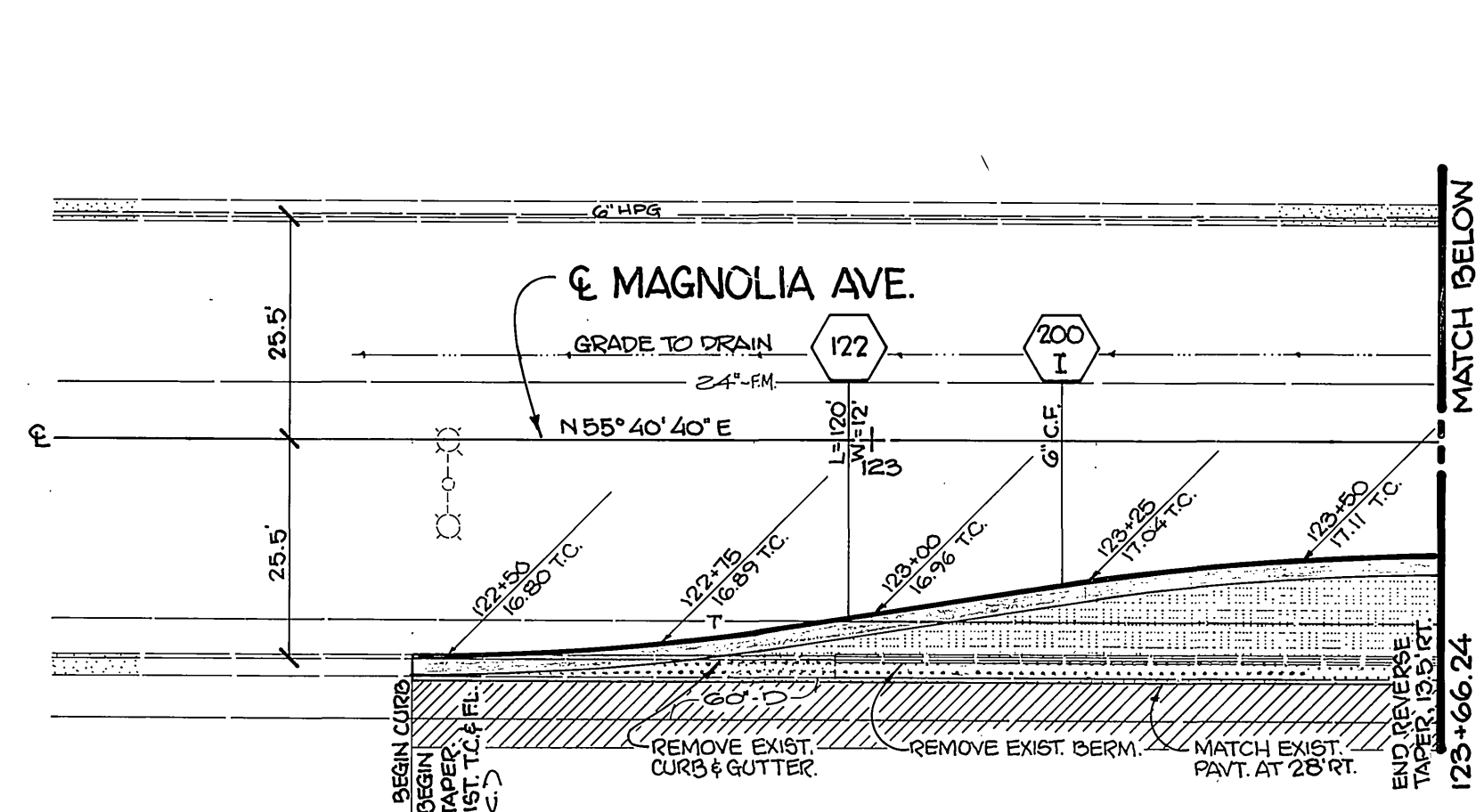


**SPECIFIC CONSTRUCTION NOTES**

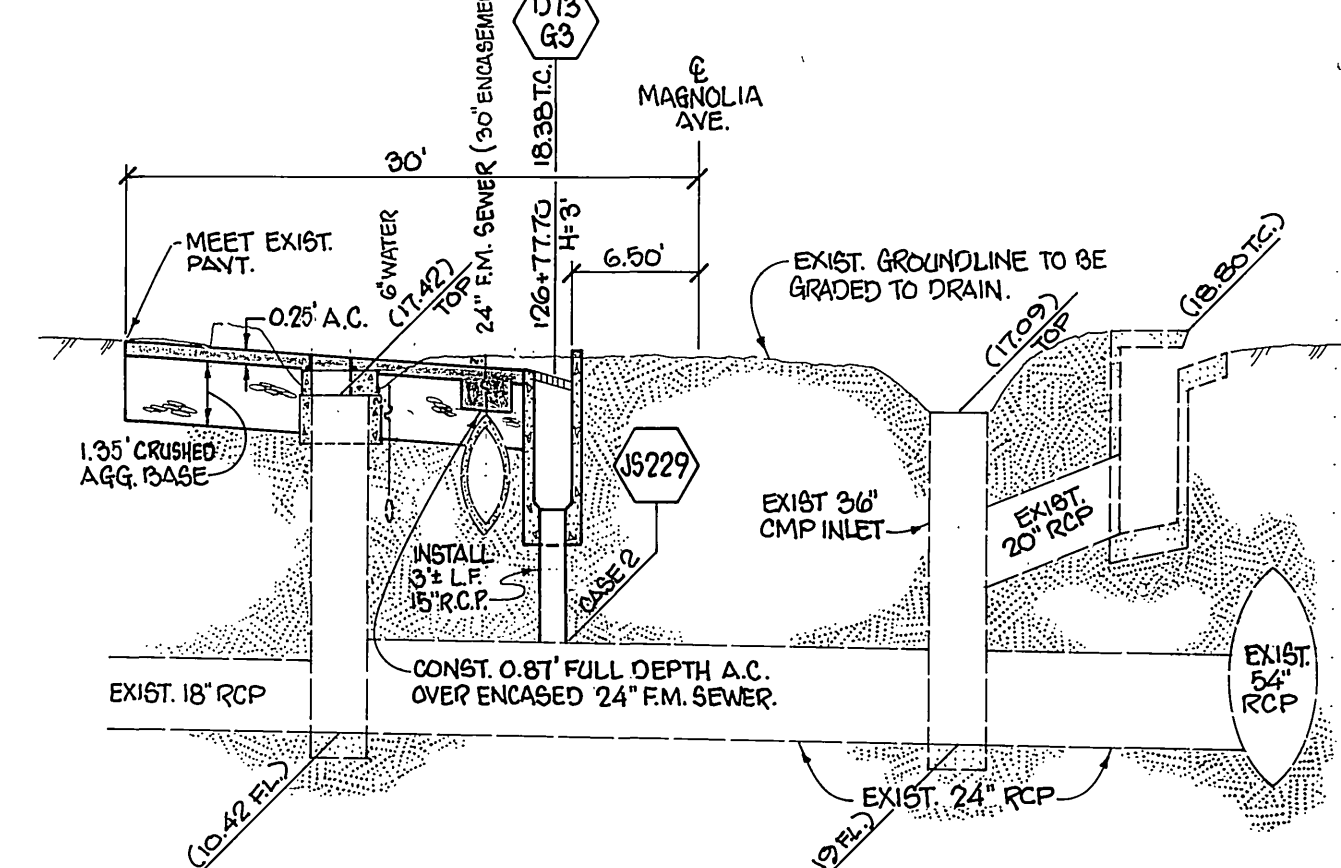
- NUMBERS ABOVE 100 SHOWN IN A HEXAGON ON THE PLAN REFER TO THE RESPECTIVE STANDARD DRAWING NUMBERS AND SHALL BE CONSTRUCTED ACCORDINGLY UNLESS MODIFICATIONS ARE LISTED ON THE PLAN OR COVER SHEET BELOW. ANY NUMBER SHOWN BELOW THE STANDARD DRAWING NUMBER INDICATES THE SPECIFIC ALTERNATE TO BE CONSTRUCTED.
- STATE OF CALIFORNIA, BUSINESS AND TRANSPORTATION AGENCY, DEPARTMENT OF TRANSPORTATION, STANDARD PLANS, JANUARY 1981. (S.P. 22) S.C.P.C. STANDARD DRAWING.
- REMOVE EXIST. STRUCTURAL SECTION AND CONSTRUCT STRUCTURAL SECTION OF 0.25' A.C. OVER 1.5' CRUSHED AGGREGATE BASE, OR 0.5' FULL DEPTH A.C.
- CONSTRUCT STRUCTURAL SECTION OF 0.25' A.C. OVER 1.5' CRUSHED AGGREGATE BASE, OR 0.5' FULL DEPTH A.C.
- OVERLAY EXIST. A.C. TO LIMITS SHOWN ON THE PLAN WITH VARIABLE THICKNESS OF A.C. (1" MIN.). FEATHER TO MEET EXIST. PAVEMENT.

**GENERAL CONSTRUCTION NOTES**

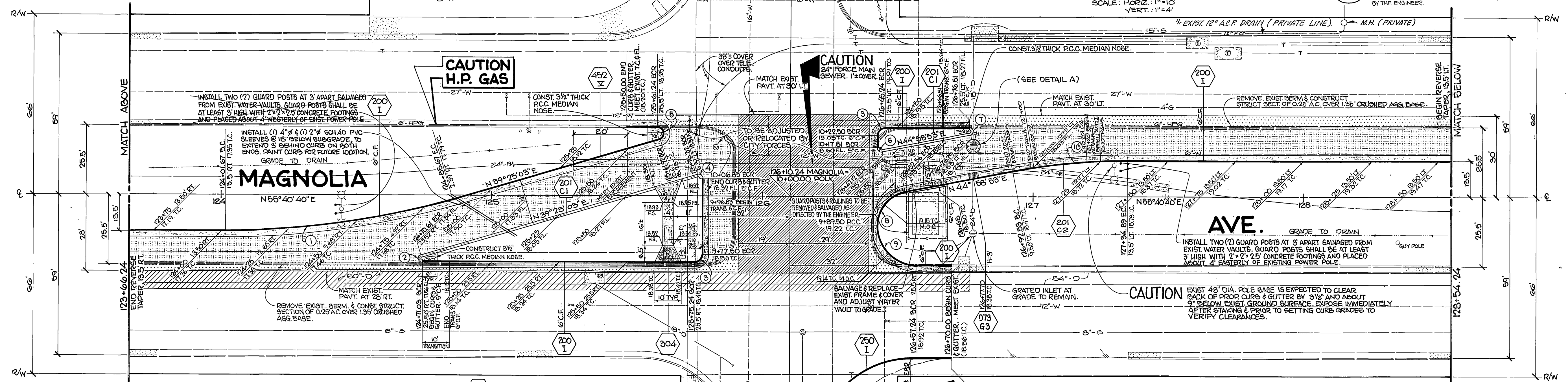
- EXISTING UTILITIES SHOWN ON THIS PLAN ARE PLOTTED FROM UTILITY RECORDS. THE CONTRACTOR IS REQUIRED TO TAKE DUE PRECAUTIONARY MEASURES TO LOCATE AND PROTECT ALL UTILITIES WHETHER OR NOT SHOWN ON THIS PLAN.
- ALL ELEVATIONS SHOWN ON THE PLAN SHALL BE GRADED IN THE FIELD.
- THESE PLANS ARE FOR STREET CONSTRUCTION ONLY. STREET LIGHTS AND TRAFFIC SIGNALS SHALL BE CONSTRUCTED FROM CITY OF RIVERSIDE PLAN X-922.
- CONFLICTING UTILITIES SHOWN WITHIN CONSTRUCTION AREA WILL BE RELOCATED PRIOR TO CONSTRUCTION.
- EXISTING SIGNS AFFECTED BY CONSTRUCTION SHALL BE RELOCATED AS DIRECTED BY THE ENGINEER.



**DETAIL A**  
SCALE: 1"=5'

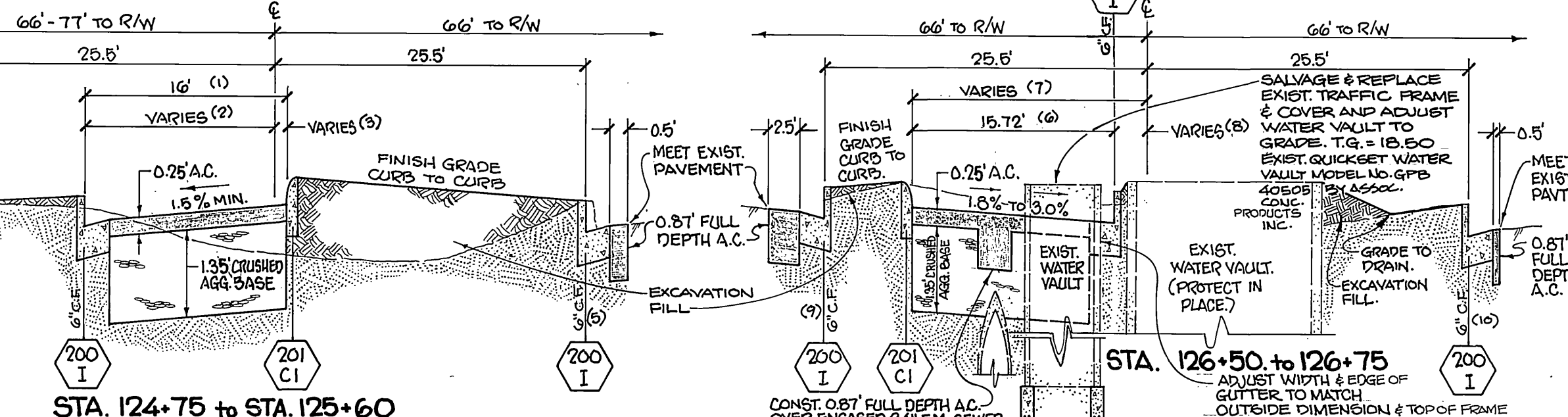


**PROFILE-EXIST. 24" R.C.P. AT STA. 126+77.70**  
SCALE: HORIZ. 1"=10' VERT. 1"=4'



**GENERAL CONSTRUCTION NOTES (CONT.)**

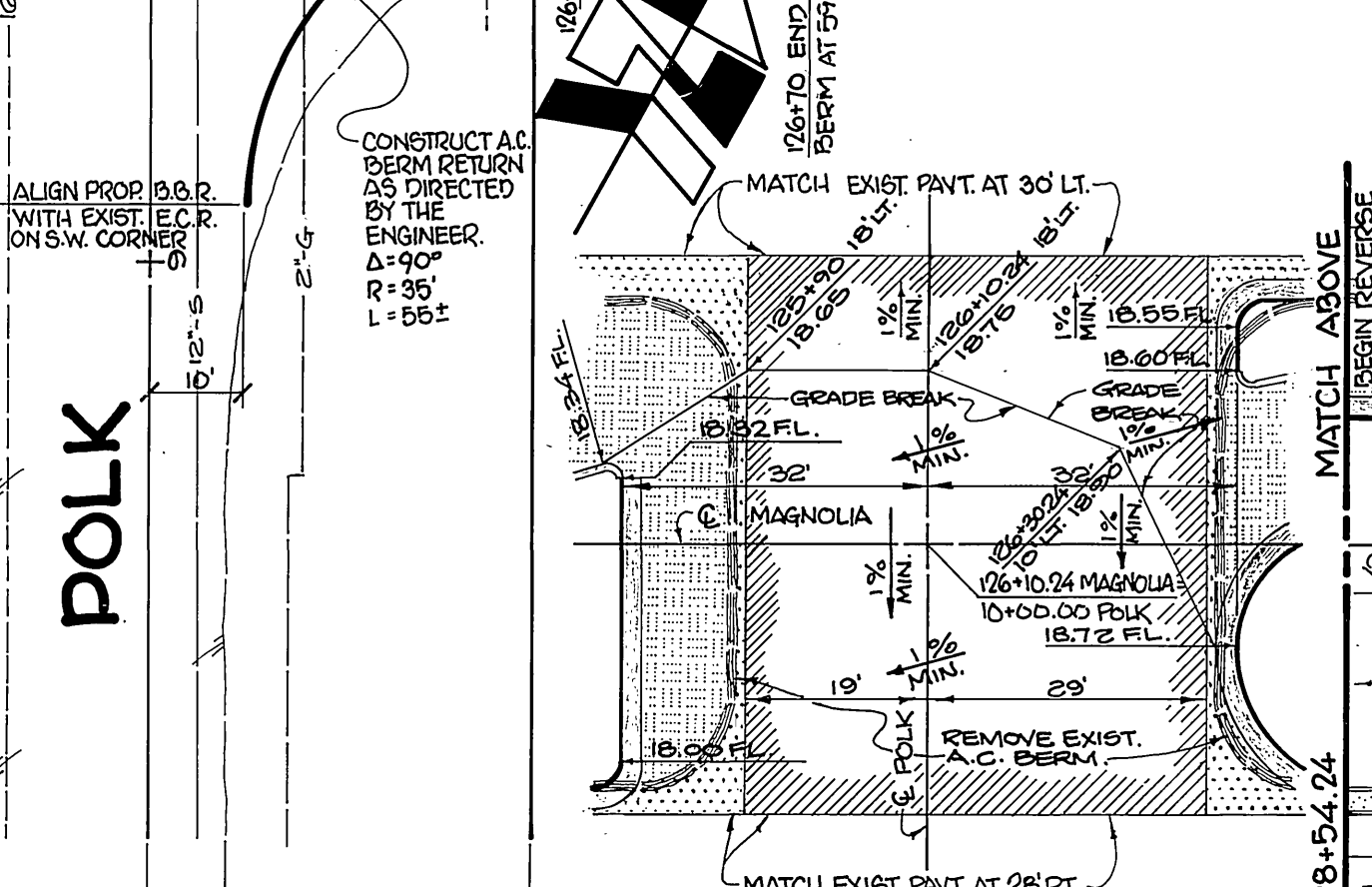
- EXCESS EXCAVATED EARTHWORK FROM ROADWAY CONSTRUCTION SHALL BE SPOILED IN THE MEDIAN AREAS AND GRADED TO DRAIN.
- NEW SIGN SIZES SHALL BE: R1 (30"x30"), R17 (30"x20"), R17A (30"x20")



**TYPICAL SECTIONS**  
SCALE: HORIZ. 1"=10' VERT. 1"=2'

- NOTES:**
- (1) DISTANCE PERPENDICULAR TO CURB LINE.
  - (2) VARIES 25.5' RT. TO 28.67' LT. FROM STA. 125+46.24 TO STA. 125+61.92 ECR.
  - (3) VARIES 23.52' RT. TO 6.51' LT. FROM STA. 124+10.61 ECR TO STA. 125+10.92 ECR.
  - (4) PROP. CURB FROM STA. 125+50.00 TO STA. 125+61.24 ECR.
  - (5) PROP. CURB FROM STA. 124+71.03 ECR TO STA. 125+76.24 ECR.
  - (6) DISTANCE PERPENDICULAR TO CURB LINE.
  - (7) VARIES 16.35' LT. TO 22.93' LT. FROM STA. 126+47.12 ECR TO STA. 126+76.19 ECR.
  - (8) VARIES 19.5' LT. TO 25.15' LT. FROM STA. 126+52.50 ECR TO STA. 126+74.24.
  - (9) PROP. CURB FROM STA. 126+49.24 ECR TO STA. 126+76.51 ECR.
  - (10) PROP. CURB FROM STA. 126+97.24 ECR TO STA. 126+105.00.

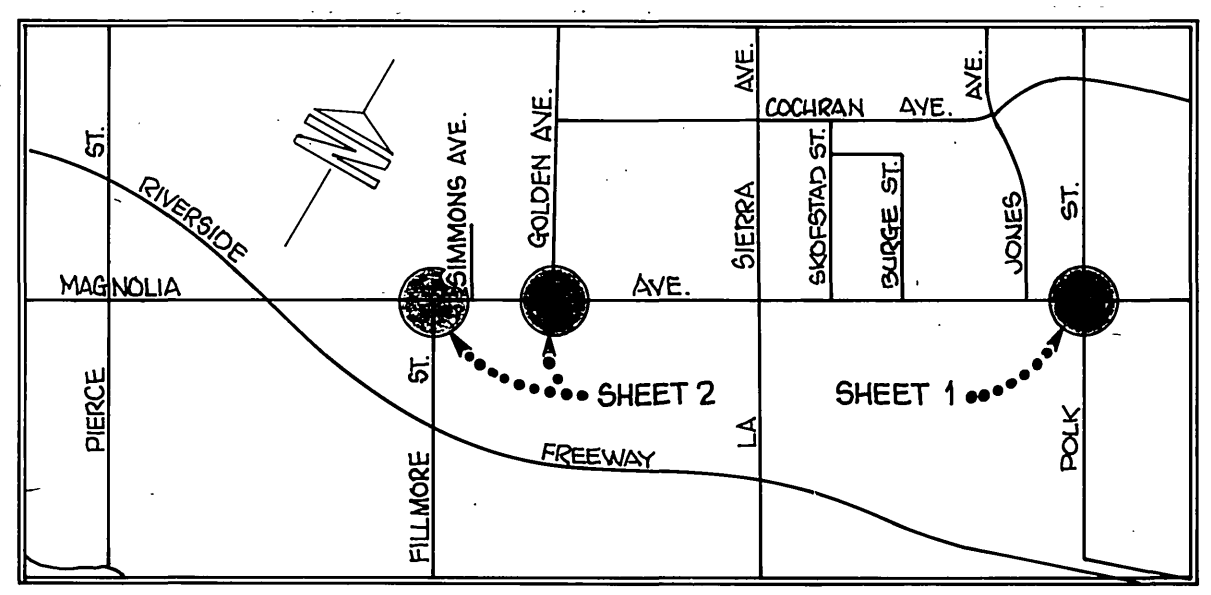
CURVE	Δ	R	T	L
(1)	16° 15' 31"	300.00'	42.86'	85.14'
(2)	163° 44' 23"	1.50'	10.50'	4.29'
(3)	90° 00' 00"	3.00'	3.00'	4.71'
(4)	106° 15' 31"	1.50'	2.00'	2.78'
(5)	163° 44' 23"	2.43'	17.00'	6.94'
(6)	100° 41' 47"	1.50'	1.81'	2.64'



**PAVEMENT GRADING DETAIL**  
INTERSECTION AT MAGNOLIA & POLK  
SCALE: 1"=20'

**UNDERGROUND SERVICE ALERT**  
1-800-472-4133  
CALL USA/SC  
FOR UNDERGROUND LOCATING  
2 WORKING DAYS BEFORE YOU DIG.

BASIS OF BEARINGS IS N55°40'40"E & MAGNOLIA AVE. PER M.D. 48/92/93.  
BENCH MARK - BRONZE O.B.K. IN CONC. POST MAGNOLIA AVE. & POLK ST. 86.0 FT. SW'LY OF THE E. POLK ST. 9.0 FT. SE OF THE E. MAGNOLIA AVE. C.R.F.B. 10/26/25 ELEV. 716.830



**PROJECT LOCATION MAP**  
SCALE: 1"=1600'

**CITY OF RIVERSIDE PUBLIC WORKS DEPARTMENT**

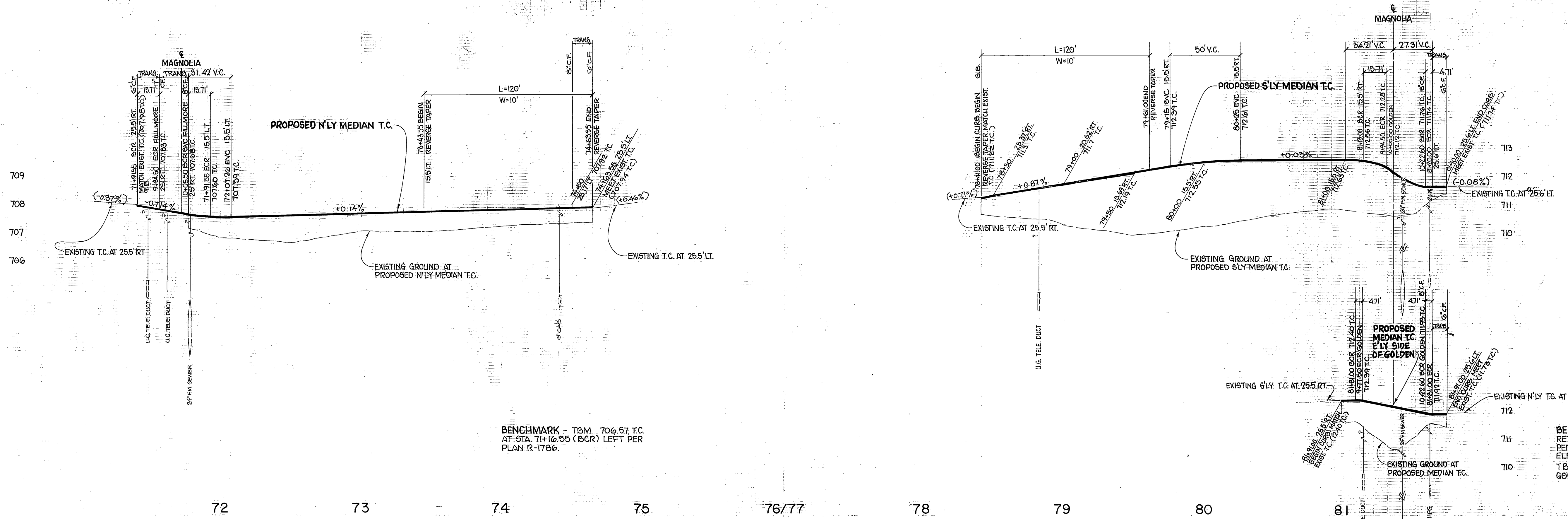
APPROVED: [Signature] DATE: 7/27/07  
 PRINCIPAL ENGINEER: [Signature] DATE: 7/27/07  
 PARK DEPARTMENT: [Signature] DATE: 7/27/07  
 TRAFFIC DIVISION: [Signature] DATE: 7/27/07  
 CHIEF P. W. ENGINEER: [Signature] DATE: 7/27/07

**MAGNOLIA AVE. LEFT TURN LANES**  
**POLK AT MAGNOLIA**

HORIZ. SCALE: 1"=20'

ACCOUNT NO. 30-575-286-07  
SHEET 1 OF 2



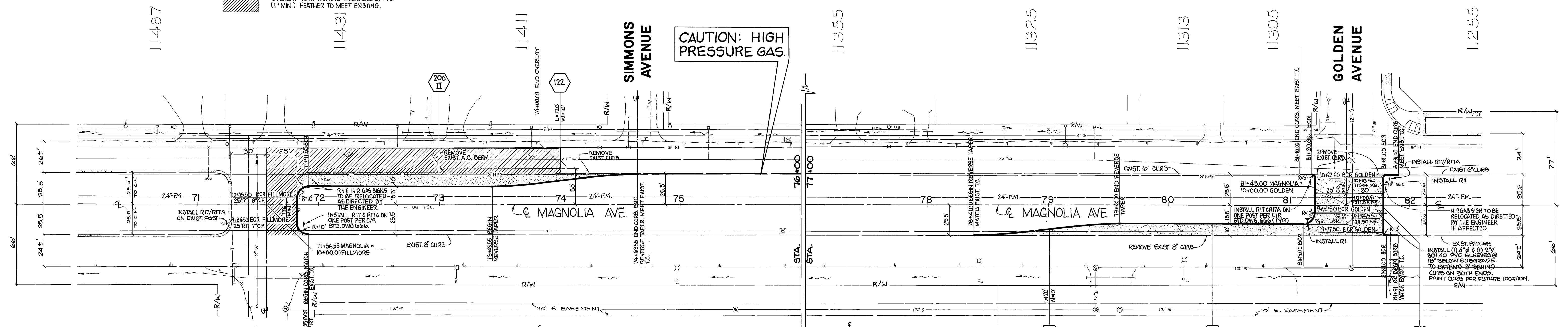


BENCHMARK - TBM 706.57 T.C. AT STA. 71+16.55 (BCR) LEFT PER PLAN R-1786.

BENCHMARK - PK. NAIL IN 6E CURB RETURN SKYLARK DR. & MAGNOLIA AVE PER CORP. T 23/79 ELEV. 711.36 ADJ. TO 711.345 TBM 710.94 1x2 T.C.L. MAGNOLIA & GOLDEN.

CONSTRUCT STRUCTURAL SECTION OF 0.25' A.C. OVER 0.85' CRUSHED AGG. BASE.  
OVERLAY WITH VARYING THICKNESS OF A.C. (1" MIN.) FEATHER TO MEET EXISTING.

CONSTRUCT STRUCTURAL SECTION OF 0.25' A.C. OVER 1.75' CRUSHED AGG. BASE.



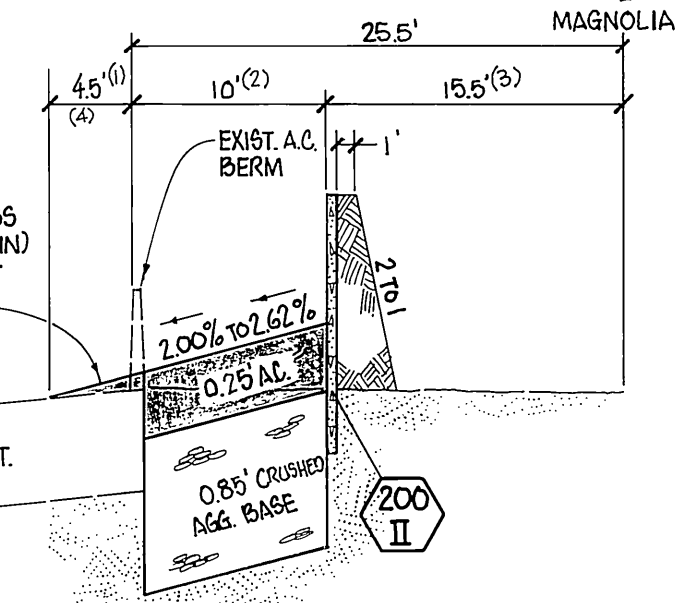
CAUTION: HIGH PRESSURE GAS.

FILLMORE STREET

SIMMONS AVENUE

GOLDEN AVENUE

- (1) OVERLAY FROM STA. 71+91.55 TO STA. 74+00.00
- (2) 10' FROM STA. 71+91.55 ECR TO STA. 73+43.55; VARIES FROM 10' TO 0' FROM STA. 73+43.55 TO STA. 74+63.55
- (3) 15.5' FROM STA. 71+91.55 ECR TO STA. 73+43.55; VARIES FROM 15.5' TO 25.5' FROM STA. 73+43.55 TO STA. 74+63.55
- (4) MIN. 0.85' WIDE STRUCT. SECTION FROM STA. 74+00.00 TO STA. 74+63.55



- (1) VARIES FROM 25.5' TO 15.5' FROM STA. 78+41.00 TO STA. 79+61.00; VARIES FROM STA. 79+61.00 TO STA. 81+13.00 BCR.
- (2) VARIES FROM 0' TO 10' FROM STA. 79+41.00 TO STA. 79+61.00; 10' FROM STA. 79+61.00 TO STA. 81+13.00 BCR.

NOTE: EXCESS EXCAVATION TO BE SPOILED IN THE MEDIANS AREAS AND TO BE GRADED TO DRAIN.

NOTE: WHEN PLACING CURB ADJACENT TO EXIST. STRUCTURAL SECTION, TRIM EXIST. PAVEMENT TO A NEAT LINE & REPAIR EXIST. STRUCTURAL SECTION IN KIND OR AS APPROVED BY THE ENGINEER.

TYPICAL SECTION STA. 71+91.55 to STA. 74+63.55. SCALE: HORIZ. 1"=10', VERT. 1"=4'

REVISIONS

MARK	REVISIONS	APPR. DATE

DESIGNED BY: B.M. DRAWN BY: D.J. CHECKED BY: C.W.

CITY OF RIVERSIDE PUBLIC WORKS DEPARTMENT

APPROVED BY: [Signature]

TRAFFIC DIVISION CHIEF P.W. ENGINEER

DATE: 7/27/82

MAGNOLIA AVE. AT FILLMORE & GOLDEN

HORIZ. SCALE: 1"=40' VERT. SCALE: 1"=2'

CAUTION - PACIFIC TELEPHONE CABLES UNDERGROUND BEFORE EXCAVATING

CALL COLLECT: 7:30 A.M. to 5 P.M. & Holidays

Orange County	714-633-0811	714-547-6606
Riverside County	714-684-0071	714-547-6606
Inyo County	714-684-0071	714-547-6606
San Bernardino County	714-684-0071	714-547-6606
Los Angeles County	213-621-3111	24 HOUR SERVICE
San Diego County	714-298-6593	714-232-0327

FOR FREE CABLE LOCATING SERVICE

ACCOUNT NO. 30-576-286-01

R-2346

SHEET 2 OF 2

FILE NO.