

NOTES:
 (A) CONST. AGGREGATE BASE RAMP AT FOUR PLACES (SLOPE VARIES 2% TO 6%) SEE EASTSIDE OF STREET FOR TYPICAL CONST.
 (B) GRADE BEHIND D/W APPROACH TO ALLOW ACCESS FOR SPPR MAINTENANCE VEHICLES. *AS BUILT 687/24 R/W.

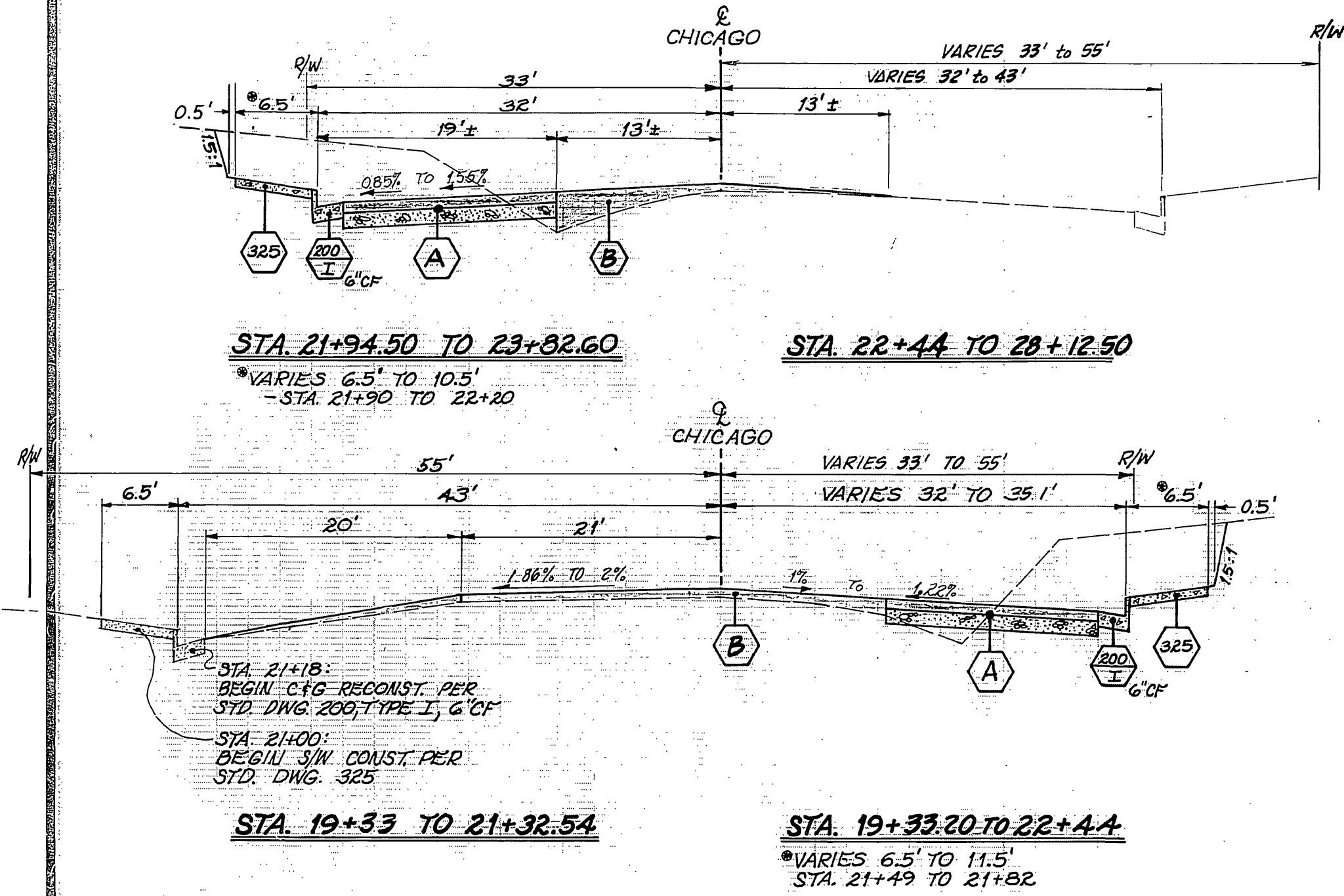
SEE SHEET 2 FOR CONSTRUCTION LEGEND, NOTES, & TYPICAL SECTIONS

ENGINEER IN RESPONSIBLE CHARGE
 HANS J. KAMRATH
 R.C.E. 14712
 DATE 11/9/87

CURVE DATA				
INDEX	R	Δ	T	L
1	1,000'	4° 24' 20"	38.47'	76.87'
2	1,200'	1° 36' 22"	14.02'	28.03'
3	1,200'	6° 00' 43"	52.51'	104.93'
4	90'	20° 08' 03"	15.58'	31.63'
5	37'	14° 30' 00"	4.71'	9.36'

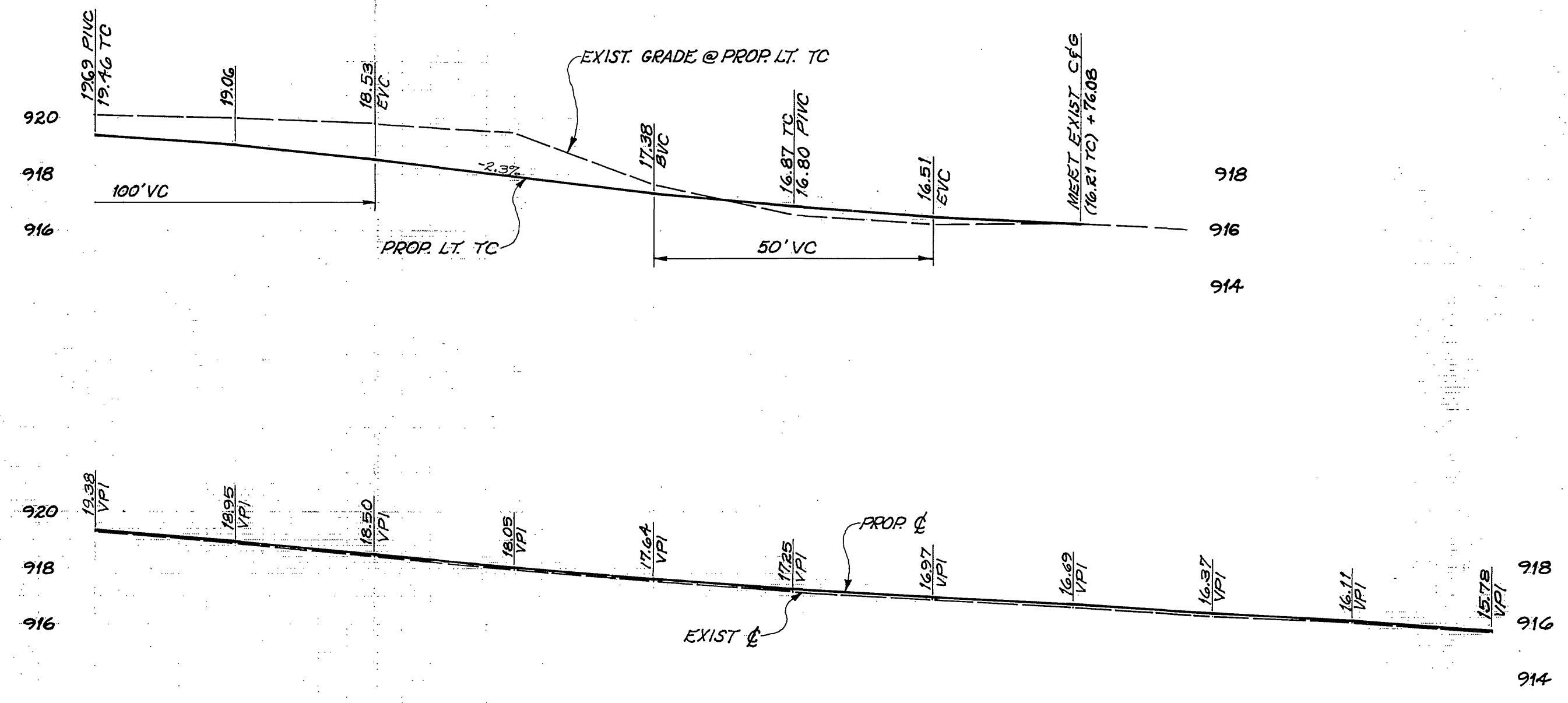
CITY OF RIVERSIDE
 PUBLIC WORKS DEPARTMENT
 APPROVED BY: *[Signature]*
 DATE: 11/11/87

CHICAGO AVENUE AT S.P.R.R.
 R-2375
 SHEET 1
 INDEXED 11-16-87



TYPICAL SECTIONS

T.I. = 8



CONSTRUCTION LEGEND

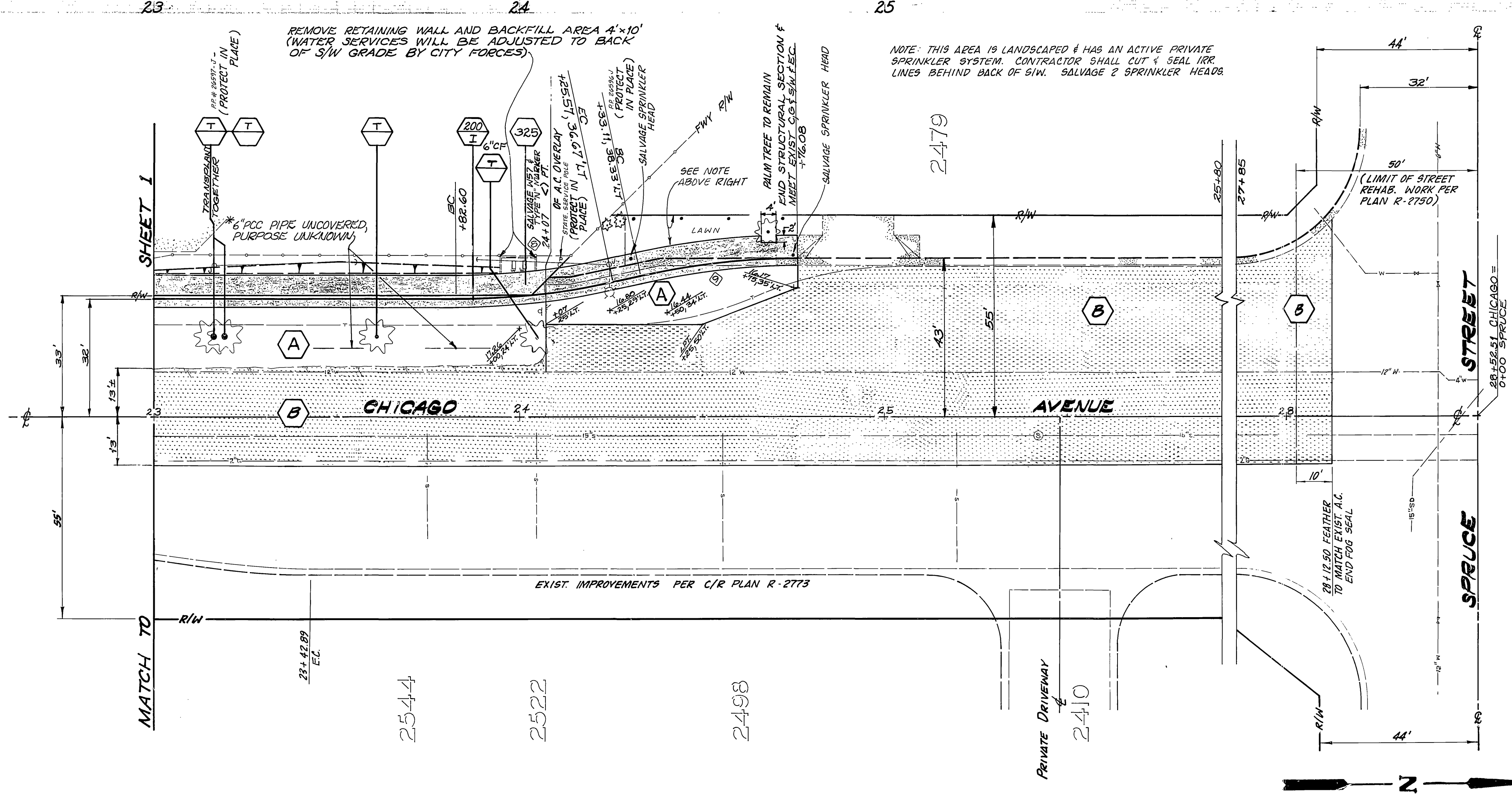
- CENTER LINE $\text{---}\text{C}\text{---}$ TOP OF SLOPE $\text{---}\text{---}\text{---}$
- RIGHT-OF-WAY $\text{---}\text{---}\text{---}$ R/W TOE OF SLOPE $\text{---}\text{---}\text{---}$
- DIRECTION OF FLOW $\text{---}\text{---}\text{---}$
- (A)** CONST. STRUCTURAL SECTION OF 0.32' AC OVER 0.50' CRUSHED AGGREGATE OR CRUSHED SLAG BASE.
- (B)** OVERLAY EXIST. AC WITH A VARIABLE THICKNESS OF AC (MINIMUM OVERLAY SHALL BE 0.08' THICK).
- (D)** CONST. 0.20' AC OVER 0.45' DISINTEGRATED GRANITE FILL MATERIAL.

SPECIFIC CONSTRUCTION NOTES

- (1)** NUMBERS ABOVE 100 IN A HEXAGON ON THE PLAN REFER TO THE RESPECTIVE STANDARD DRAWING AND SHALL BE CONSTRUCTED ACCORDINGLY, UNLESS MODIFICATIONS ARE NOTED ON THE PLAN OR AS NOTED BELOW. ANY NUMBER SHOWN IN THE LOWER HALF OF THE HEXAGON INDICATES THE SPECIFIC ALTERNATE TO BE CONSTRUCTED.
- (T)** TRANSPLANT PALM TREE TO MEDIAN ISLAND IN CHICAGO AVENUE SOUTHERLY OF COLUMBIA, NORTHERLY OF THE R.R. TRACKS, AS DIRECTED BY THE STREET TREE INSPECTOR, PER PARK & RECREATION DEPT. STDS.

GENERAL CONSTRUCTION NOTES

- (1)** CUT AND FILL SLOPES ARE 1.5 TO 1 OR FLATTER.
- (2)** ALL ELEVATIONS SHOWN ON THE PLAN SHALL BE STAKED IN THE FIELD. ELEVATIONS IN PARENTHESIS ARE EXISTING.
- (3)** ADJUST SEWER MAINHOLES TO FINISHED GRADE WITHIN AC OVERLAY AREA.
- (4)** AN ENCROACHMENT PERMIT HAS BEEN OBTAINED FROM CALTRANS FOR WORK SHOWN ON STATE R/W (SEE SPECIAL PROVISIONS).
- (5)** FDG SEAL - STA. 19+33 TO 28+13



CURVE DATA				
INDEX	R	Δ	T	L
1	200'	12°24'27"	21.74'	43.31'
2	200'	12°24'27"	21.74'	43.31'

CITY OF RIVERSIDE
PUBLIC WORKS DEPARTMENT

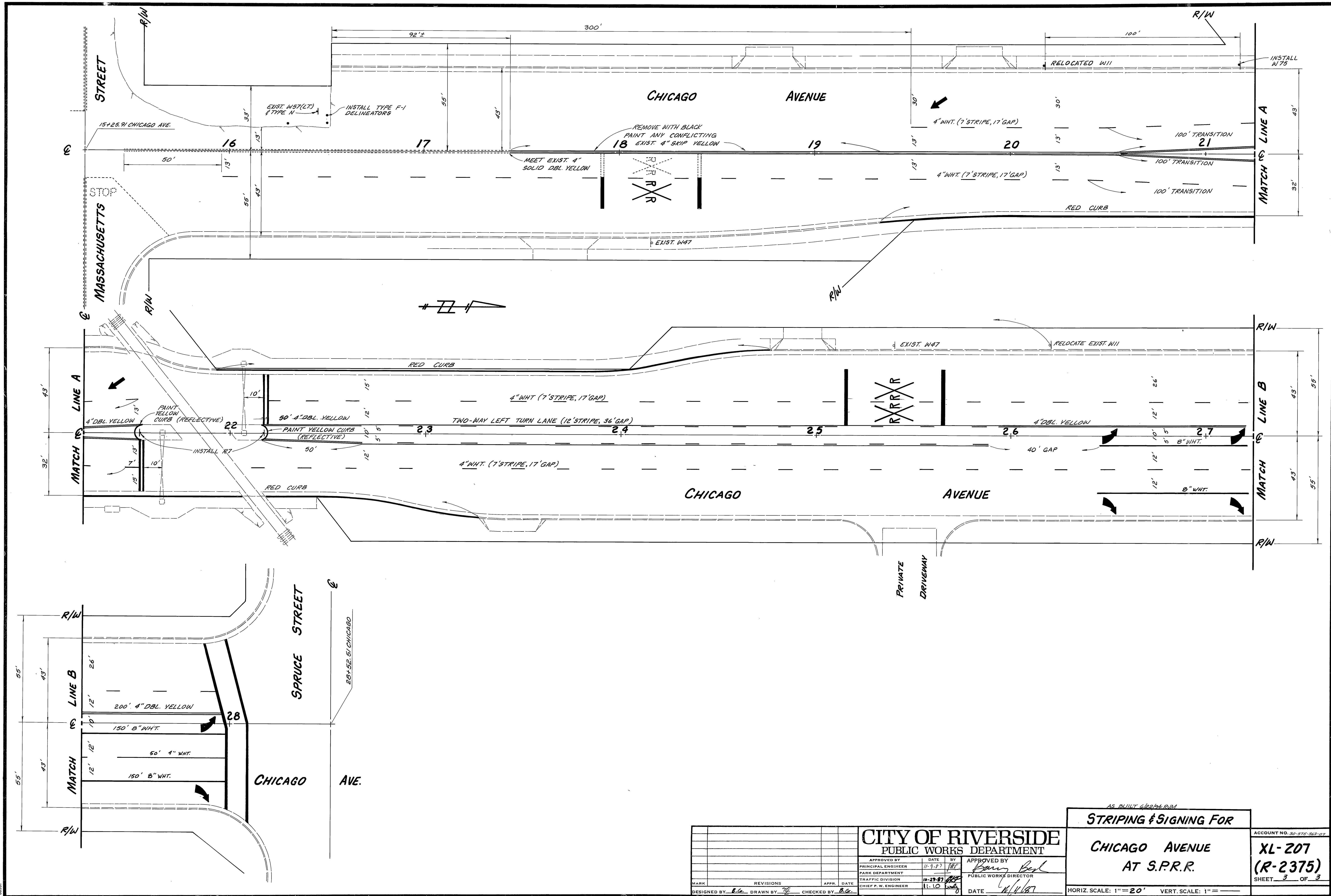
APPROVED BY: *Bany Bell* DATE: 4/1/87
 PRINCIPAL ENGINEER
 PARK DEPARTMENT
 TRAFFIC DIVISION
 SURVEY

DESIGNED BY: *247* DRAWN BY: *812* CHECKED BY: *011* DATE: 11/10/87

CHICAGO AVENUE AT S.P.R.R.

HORIZ. SCALE: 1" = 20' VERT. SCALE: 1" = 4'

ACCOUNT NO. 30-878-389-09
R-2375
 SHEET 2 OF 3



02ALD-NO.2

<p>CITY OF RIVERSIDE PUBLIC WORKS DEPARTMENT</p>			
APPROVED BY	DATE	BY	APPROVED BY
PRINCIPAL ENGINEER	11-9-87	[Signature]	PUBLIC WORKS DIRECTOR
TRAFFIC DIVISION	10-29-87	[Signature]	
CHIEF P.W. ENGINEER	11-10-87		
DESIGNED BY	DRAWN BY	CHECKED BY	DATE
B.G.	[Signature]	B.G.	11/4/87

AS BUILT RECORD

STRIPING & SIGNING FOR

CHICAGO AVENUE
AT S.P.R.R.

ACCOUNT NO. 30-575-363-07
XL-207
(R-2375)
SHEET 3 OF 3

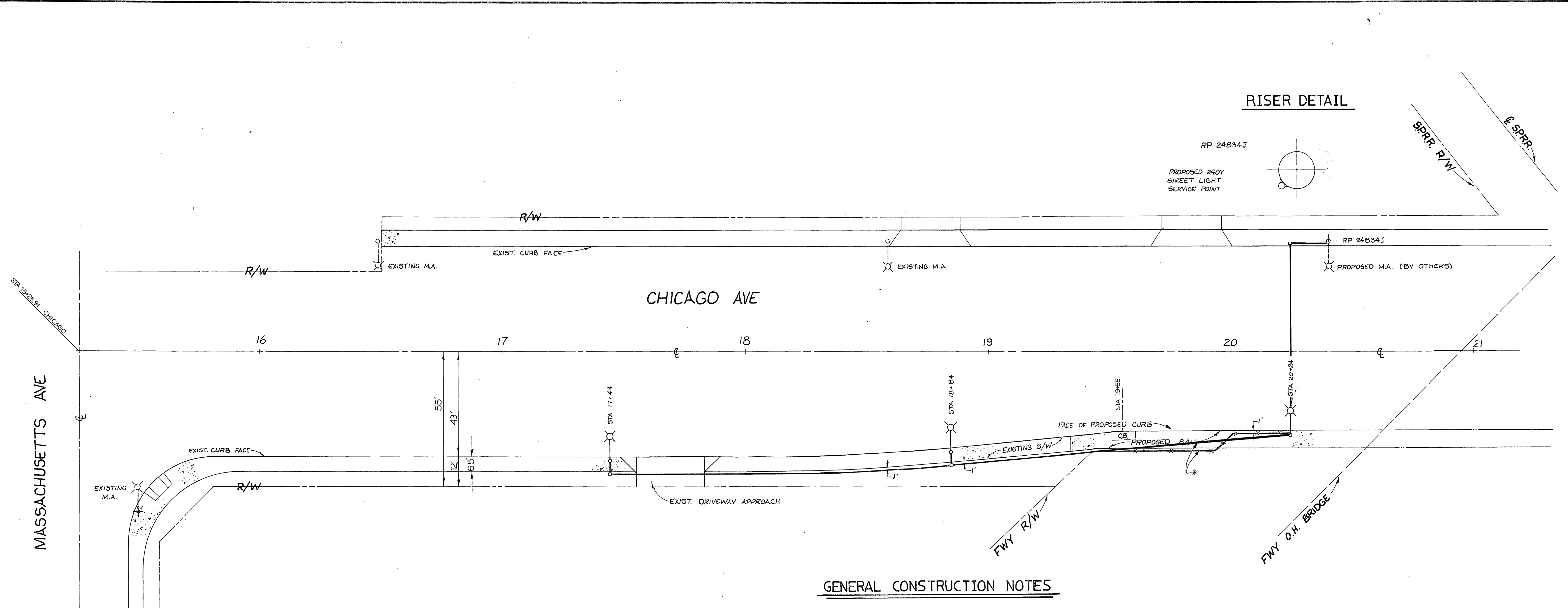
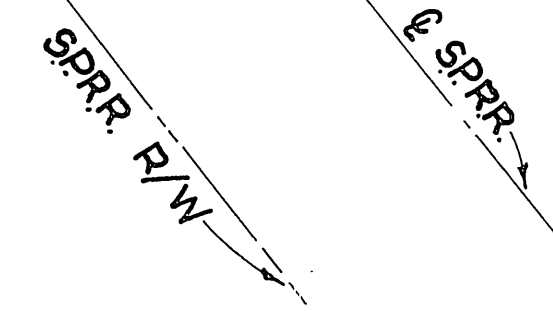
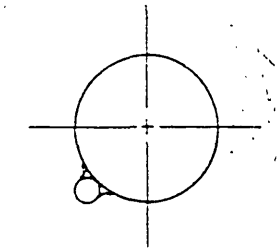
HORIZ. SCALE: 1" = 20' VERT. SCALE: 1" = 10'

INDEXED 11-16-87

RISER DETAIL

RP 24834J

PROPOSED 240V STREET LIGHT SERVICE POINT

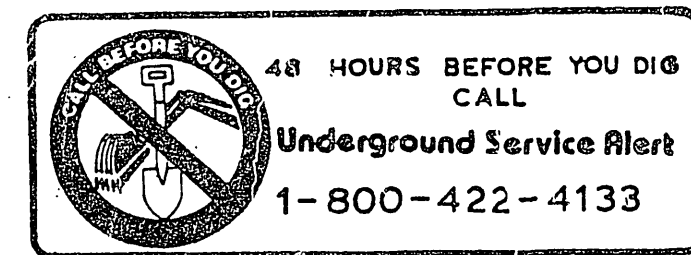


STREET LIGHT STRUCTURE SCHEDULE

SYMBOL	DESCRIPTION	SIZE	NO. REQ'D	STANDARD NO.	ITEM
	CONCRETE ELECTROLIER STANDARD HORIZONTAL LUMINAIRE - H.P.S. LAMP - H.P.S. PHOTO CONTROL	31' 3" 200W 200W 1000W	3 3 3	UGS-800 UGS-800 UGS-800	S8 H4 HL4 PC2
	CONCRETE PULLBOX	10"x17"x12"	3	UGS-800	PI
	1" RIGID STEEL CONDUIT WITH 2-#8 CU 600V CABLES	AS SHOWN			

GENERAL CONSTRUCTION NOTES

1. INSTALL ALL STREET LIGHT FACILITIES AS SHOWN IN ACCORDANCE WITH THE PLANS AND THE LATEST REVISION OF THE CITY OF RIVERSIDE PUBLIC UTILITIES DEPARTMENT STREET LIGHT SPECIFICATION NO. 119.
2. CONTACT PUBLIC UTILITIES STREET LIGHT INSPECTOR, PHONE NO. 782-5429, FOR REQUIRED INSPECTIONS.
3. EXCAVATION FOR ELECTROLIER FOUNDATIONS, PULLBOXES, AND CONDUITS MUST BE DONE AFTER INSTALLATION OF CURB AND GUTTER, BUT BEFORE INSTALLATION OF SIDEWALKS. FOUNDATION LOCATIONS SHALL BE APPROVED BY THE ENGINEER PRIOR TO EXCAVATION.
4. INSTALL A WATERPROOF "IN LINE" FUSE HOLDER IN BOTH BRANCH CONDUCTORS IN THE BASE OF EACH STREET LIGHT STANDARD. FUSE HOLDER TO BE "BUSSMAN TRON" #16B, COMPATIBLE WITH SIZE AND TYPE OF WIRE USED, WITH A "BUSSMAN" FNM 5 AMP 250 VOLT FUSE OR APPROVED EQUAL.
5. ALL SERVICE POINTS TO BE CONNECTED BY CITY OF RIVERSIDE.
6. MARK INSTALLATION DATE ON PHOTO CONTROLS AND LAMPS AS PROVIDED FOR BY MANUFACTURERS.
7. THESE PLANS ARE ACCURATE FOR STREET LIGHTING ONLY. SEE PLAN NO. R-2375 FOR STREET IMPROVEMENT DETAILS.



*AS BUILT 6/22/84 RUM

ORNAMENTAL STREET LIGHT INSTALLATION
CHICAGO AVE - MASSACHUSETTS AVE TO SPRR.

SCALE 1" = 20'	DRAWN T. MADER	CITY OF RIVERSIDE DEPARTMENT OF PUBLIC UTILITIES
DATE 2-16-88	CHECKED [Signature]	
JOB No.	APPROVED [Signature]	DRAWING No. E L5-1050

FILE WITH: R-2375