

**CONSTRUCTION NOTES :**

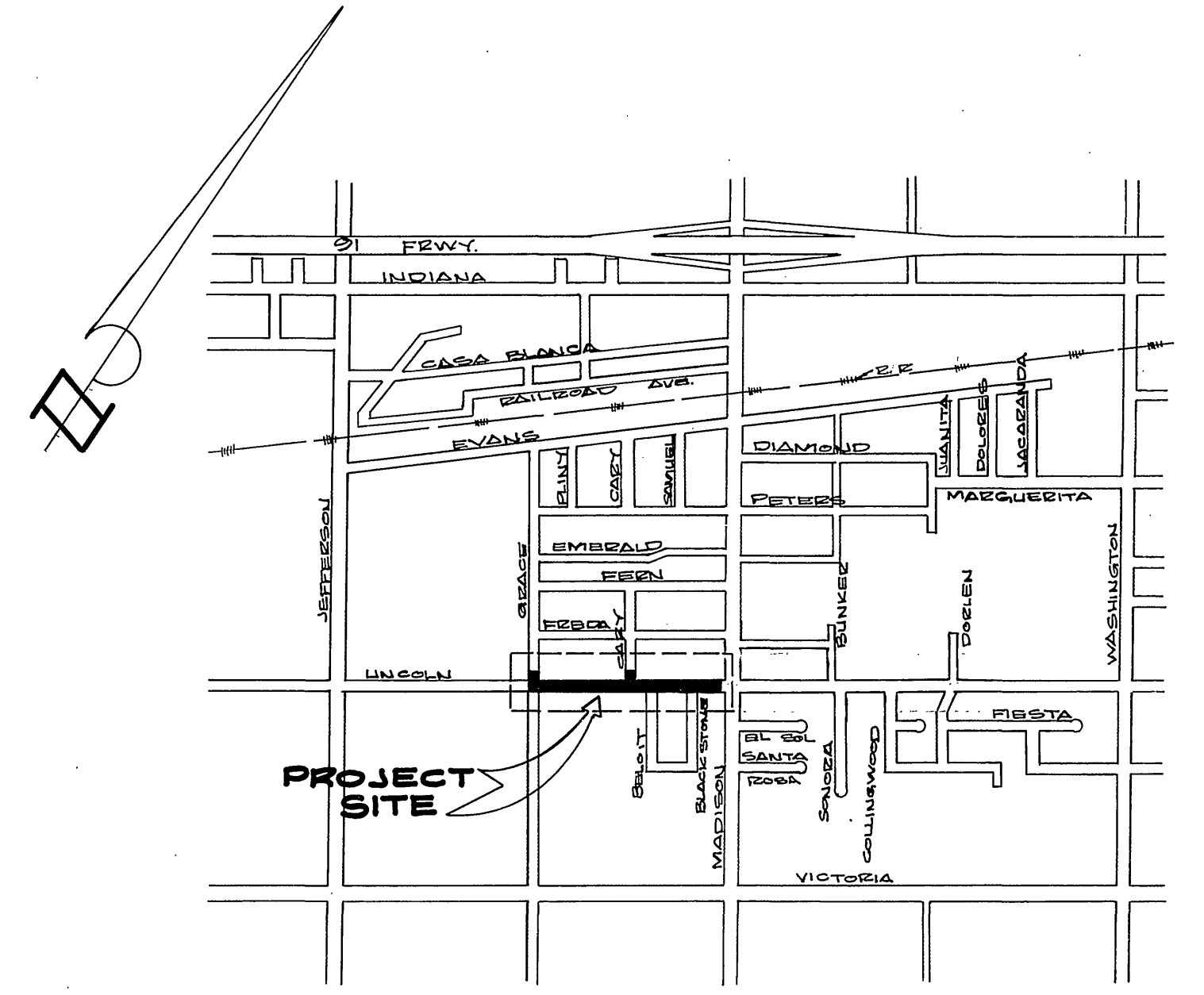
- (200) CONSTRUCT CURB & GUTTER, PER STANDARD 200 (6" CR).
- (202) CONSTRUCT DRIVEWAY APPROACH, PER STANDARD 202.
- (204) CONSTRUCT WHEELCHAIR RAMP, PER STANDARD 204.
- (205) CONSTRUCT CURB LINE SIDEWALK, PER STANDARD 205.
- (X) ~~CONSTRUCT MATCHUP A.C. PAVING OVERLAY TO EXISTING PAVEMENT OR OVERLAY TO MATCH.~~
- (2) ALL FENCES AND MAIL BOXES TO BE RELOCATED BY OWNERS.
- (2) ~~MANHOLES TO BE ADJUSTED TO GRADE AFTER FINAL PAVING BY CONTRACTOR.~~
- (4) A.C. PAVING, CONSTRUCT 0.3" A.C. PAVING OVER 0.4" CLASS 2 A.B.
- (5) CONSTRUCT VARIABLE A.C. OVERLAY, SEE GENERAL NOTE 6.
- (6) CONSTRUCT MATCHUP CONCRETE PAVING.
- (7) REMOVE EXISTING CURB AND GUTTER.
- (8) EXISTING WATER FACILITY TO BE ADJUSTED TO GRADE OR RELOCATED BY CITY WATER PROCESS. SEE GENERAL NOTE 2.
- (9) POWER POLE TO BE RELOC. BY CITY ELECT. DEPT.
- (10) STREET LIGHT TO BE RELOC. BY CITY ELECT. DEPT.
- (11) CONSTRUCT MONOLITHIC WALL PER DETAIL "A" BELOW.
- (12) GRADE TRANSITION TO MAKE A SMOOTH DRIVE, LENGTH AS SHOWN ON PLANS OR AS DETERMINED BY INSPECTOR. TOP SURFACE OF DIET DRIVEWAYS SHALL BE 6" THICK OF DISINTEGRATED GRANITE. RELATIVE COMPACTION SHALL BE 90% (MIN.).
- (13) PLANT 15 GAL. LAURASTROMIA INDICA / CREEP MYRTLE PER DETAIL "B" BELOW & PARK DEPT. DETAIL NO. 501.

**GENERAL NOTES :**

- 1. CONSTRUCTION SHALL BE IN ACCORDANCE WITH STANDARD SPECIFICATIONS FOR PUBLIC WORKS CONSTRUCTION, 1982 EDITION, AND CITY OF RIVERSIDE STANDARD DRAWINGS.
- 2. CONSTRUCTION CONTRACTOR IS TO RESET ANY STREET NAME AND TRAFFIC SIGNS.
- 3. CONSTRUCTION CONTRACTOR IS TO GIVE THE CITY WATER DIVISION FIVE (5) WORKING DAYS WRITTEN NOTICE PRIOR TO START OF CONSTRUCTION AND TO ALLOW THE CITY TEN (10) WORKING DAYS FOR COMPLETION OF THE WORK. (787-1011)
- 4. CONSTRUCTION CONTRACTOR TO ADJUST STREET LIGHT PULL BOXES AND STREET LIGHT FOUNDATION CAPS TO NEW SIDEWALK GRADE AS REQUIRED.
- 5. GRADING AT REAR OF SIDEWALK, IF NECESSARY, TO MEET EXISTING GROUND AT RIGHT OF WAY. MAX SLOPE TO BE 2:1. ~~UNDESIRABLE SLOPES SHALL BE GRADED IN THE FIELD BY THE CONTRACTOR.~~
- 6. TRIM EDGE OF EXISTING PAVEMENT WHERE NEW PAVEMENT JOINS TO A SMOOTH STRAIGHT LINE. CONSTRUCT MATCH UP PAVING AS SHOWN ON THE PLANS AND OVERLAY PAVING AS DIRECTED IN THE FIELD TO PRODUCE A SMOOTH SURFACE. ENGINEER ESTIMATES OVERLAY TO BE TONS.
- 7. CURB SHALL BE STAKED AT 25' INTERVALS AND 3' OFFSET.
- 8. CONTRACTOR SHALL PROVIDE 6" X 6" BLOCKOUTS FOR MAIL BOXES IN CURB SIDEWALK.
- 9. THE PRIVATE ENGINEER SIGNING THESE PLANS IS RESPONSIBLE FOR ASSURING THE ACCURACY AND ACCEPTABILITY OF THE WORK HEREON. IN THE EVENT OF DISCREPANCIES ARISING DURING CONSTRUCTION, THE PRIVATE ENGINEER SHALL BE RESPONSIBLE FOR DETERMINING AN ACCEPTABLE SOLUTION AND REVISIONS THESE PLANS FOR APPROVAL BY THE CITY.
- 10. ALL EXISTING UNPAVED DRIVEWAYS ARE TO BE GRADED AS NECESSARY TO CREATE A SMOOTH TRANSITION FROM BACK OF SIDEWALK. EXISTING PAVED DRIVEWAYS ARE TO BE REMOVED AS SHOWN ON THE PLANS AND REPLACED TO BACK OF SIDEWALK WITH SIMILAR MATERIAL TO CREATE A SMOOTH DRIVE.

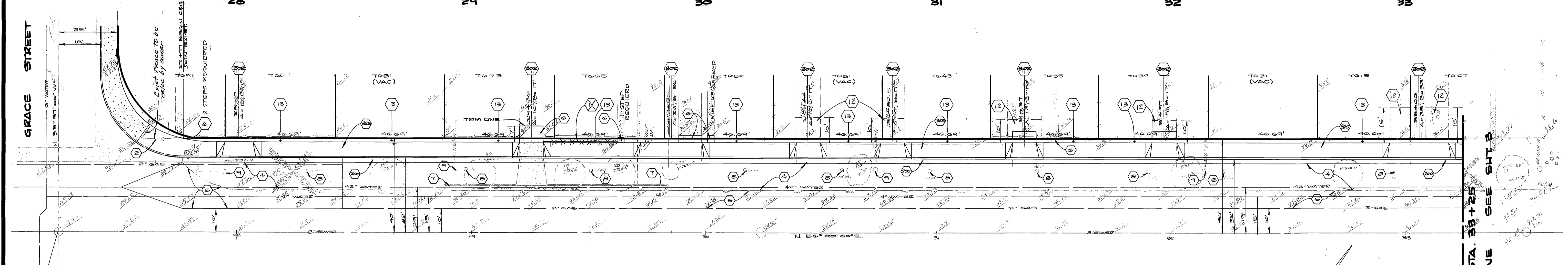
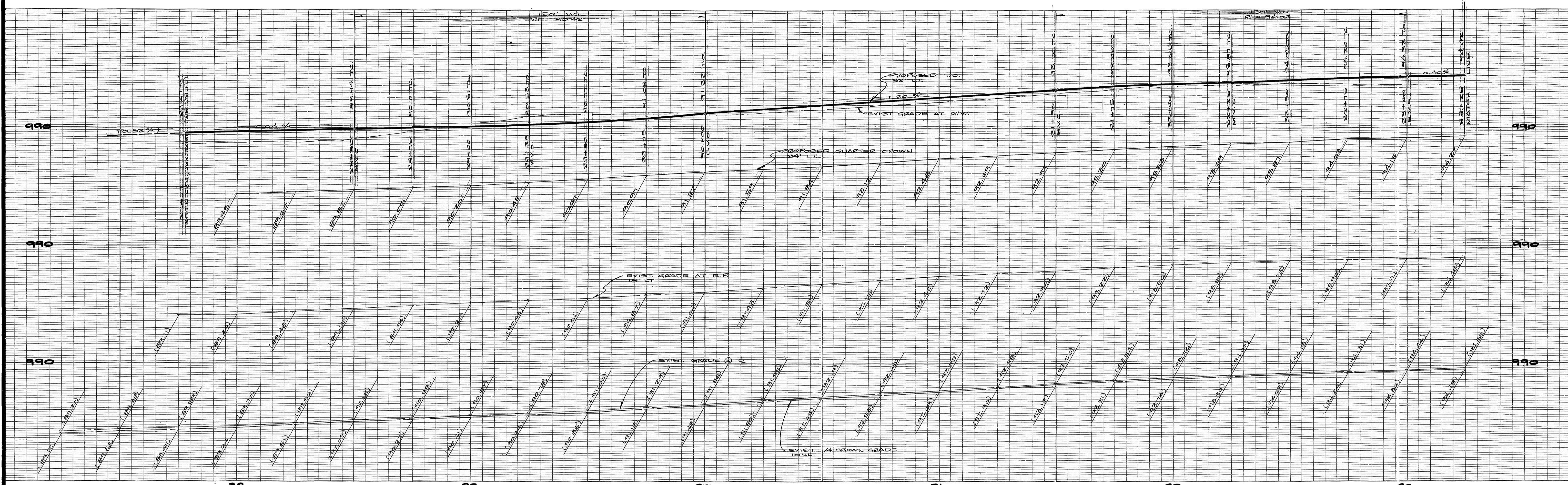
**QUANTITY ESTIMATE :**

	CUT	FILL
GRACE TO MADISON	608 C.Y.	190 C.Y.
MADISON TO BORLEN	202 C.Y.	280 C.Y.
<b>TOTAL</b>	<b>810 C.Y.</b>	<b>470 C.Y.</b>



**BENCH MARK:** ELEVATION: 928.327  
BRASS DISK IN CAP WELL STAMPED F6-C AT VICTORIA AVE & MADISON ST AT 5'LY DRIVE VICTORIA AVE.

ALBERT A. WEBB ASSOCIATES CIVIL ENGINEERS RIVERSIDE, CALIFORNIA APPROVED BY <i>R. Michael Carl</i> DATE 7/24/89 R.E. No. 30200	W.O.S.-126 FOR CITY OF RIVERSIDE F.B.1013 DESIGNED BY M.C. DRAWN BY E.H. CHECKED BY <i>AW</i>	CITY OF RIVERSIDE, CALIFORNIA PUBLIC WORKS DEPARTMENT		EMERGENCY JOBS BILL-1983 LINCOLN AVENUE WIDENING GRACE ST. TO MADISON ST.	ACCOUNT No. 15-551-473 DRAWING NUMBER <b>R-2377</b> SHEET 1 OF 3
		APPROVED BY <i>[Signature]</i> DATE 8/25/89 PRINCIPAL ENGINEER PARK DEPARTMENT TRAFFIC DIVISION CHIEF PUB. WKS. ENGR.	BY <i>[Signature]</i> DATE 8/25/89 DATE 8/25/89	APPROVED BY <i>[Signature]</i> DIRECTOR OF PUBLIC WORKS	SCALE: NO SCALE



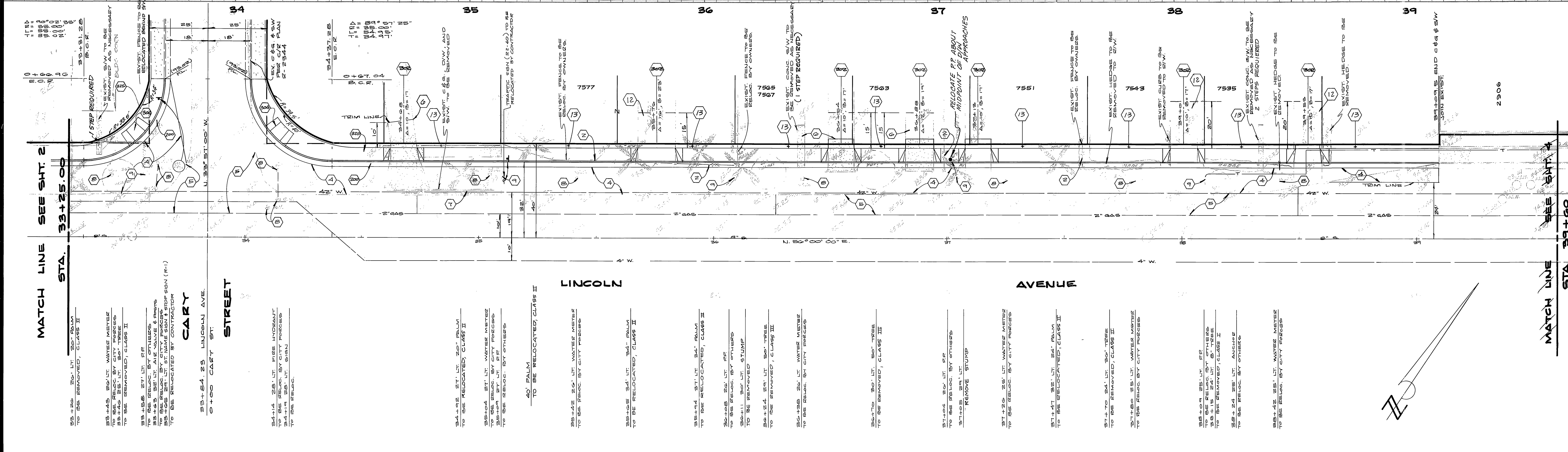
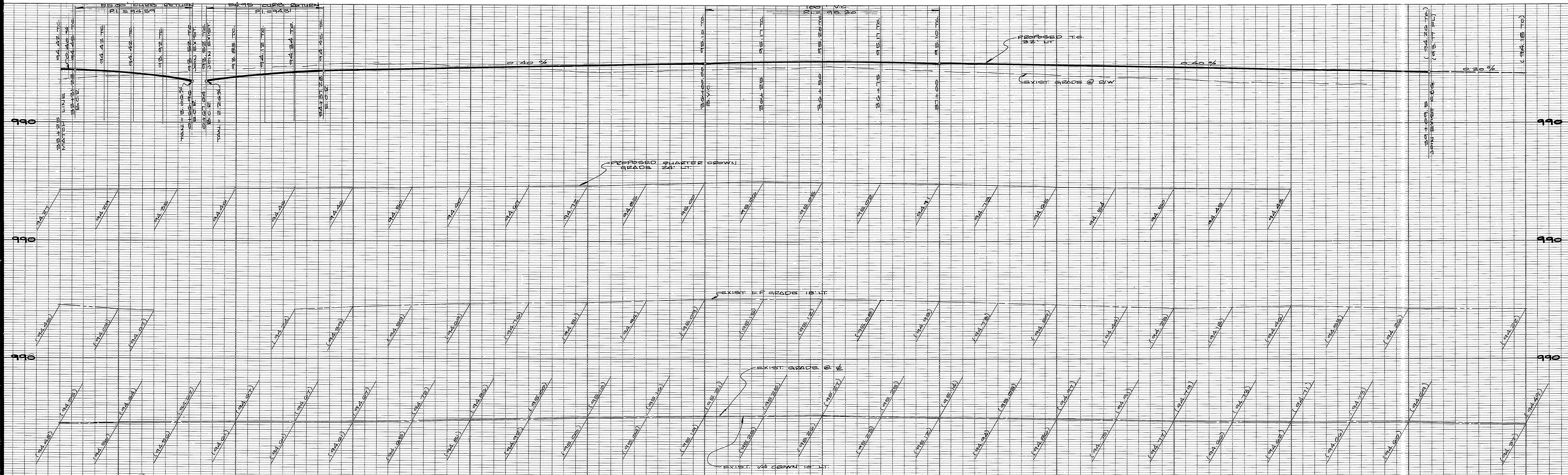
- 27+00 TO 27+08 88" LINCOLN AVE. TO BE REMOVED, CLASS II
- 27+08 TO 27+15 24" LT. 24" TUBE TO BE REMOVED, CLASS I
- 27+15 TO 27+24 20" LT. 20" TUBE TO BE REMOVED, CLASS II
- 27+24 TO 27+30 20" LT. 20" TUBE TO BE REMOVED, CLASS II
- 27+30 TO 27+38 20" LT. 20" TUBE TO BE REMOVED, CLASS II
- 27+38 TO 27+46 20" LT. 20" TUBE TO BE REMOVED, CLASS II
- 27+46 TO 27+54 20" LT. 20" TUBE TO BE REMOVED, CLASS II
- 27+54 TO 27+62 20" LT. 20" TUBE TO BE REMOVED, CLASS II
- 27+62 TO 27+70 20" LT. 20" TUBE TO BE REMOVED, CLASS II
- 27+70 TO 27+78 20" LT. 20" TUBE TO BE REMOVED, CLASS II
- 27+78 TO 27+86 20" LT. 20" TUBE TO BE REMOVED, CLASS II
- 27+86 TO 27+94 20" LT. 20" TUBE TO BE REMOVED, CLASS II
- 27+94 TO 27+00 20" LT. 20" TUBE TO BE REMOVED, CLASS II

**NOTE:**  
SEE SHEET 1 FOR ALL GENERAL AND CONSTRUCTION NOTES.

**NOTE:**  
ALL FLAGGED ELEVATIONS TO BE CHECKED IN THE FIELD BY THE ENGINEER.  
\* AS BUILT 7.27.84 BSET!

**BENCH MARK:** ELEVATION 923.327  
BRASS DISK IN CAP WELL STAMPED F.O.C. AT VICTORIA AVE. & MADISON ST AT S'LY DRIVE VICTORIA AVE.

ALBERT A. WEBB ASSOCIATES CIVIL ENGINEERS RIVERSIDE, CALIFORNIA APPROVED BY: <i>R. Michael Cost</i> DATE: 7/27/81 R.E. No. 30200	CITY OF RIVERSIDE, CALIFORNIA DEPARTMENT OF PUBLIC WORKS APPROVED BY: <i>[Signature]</i> DATE: 10/25/83 DIRECTOR OF PUBLIC WORKS	EMERGENCY JOBS BILL - 1983 LINCOLN AVENUE WIDENING GRACE ST. TO MADISON ST. ACCOUNT No. 15-551-473 DRAWING NUMBER <b>R-2377</b> SHEET 2 OF 3 80-186-A



MATCH LINE SEE SHT. 2  
STA. 33+25.00

34  
35  
36  
37  
38  
39

60 PALM  
TO BE RELOCATED, CLASS III

60 PALM  
TO BE RELOCATED, CLASS III

60 PALM  
TO BE RELOCATED, CLASS III

60 PALM  
TO BE RELOCATED, CLASS III

60 PALM  
TO BE RELOCATED, CLASS III

60 PALM  
TO BE RELOCATED, CLASS III

60 PALM  
TO BE RELOCATED, CLASS III

60 PALM  
TO BE RELOCATED, CLASS III

60 PALM  
TO BE RELOCATED, CLASS III

60 PALM  
TO BE RELOCATED, CLASS III

60 PALM  
TO BE RELOCATED, CLASS III

60 PALM  
TO BE RELOCATED, CLASS III

60 PALM  
TO BE RELOCATED, CLASS III

60 PALM  
TO BE RELOCATED, CLASS III

60 PALM  
TO BE RELOCATED, CLASS III

60 PALM  
TO BE RELOCATED, CLASS III

60 PALM  
TO BE RELOCATED, CLASS III

60 PALM  
TO BE RELOCATED, CLASS III

60 PALM  
TO BE RELOCATED, CLASS III

60 PALM  
TO BE RELOCATED, CLASS III

60 PALM  
TO BE RELOCATED, CLASS III

60 PALM  
TO BE RELOCATED, CLASS III

60 PALM  
TO BE RELOCATED, CLASS III

60 PALM  
TO BE RELOCATED, CLASS III

60 PALM  
TO BE RELOCATED, CLASS III

60 PALM  
TO BE RELOCATED, CLASS III

60 PALM  
TO BE RELOCATED, CLASS III

60 PALM  
TO BE RELOCATED, CLASS III

60 PALM  
TO BE RELOCATED, CLASS III

60 PALM  
TO BE RELOCATED, CLASS III

60 PALM  
TO BE RELOCATED, CLASS III

60 PALM  
TO BE RELOCATED, CLASS III

60 PALM  
TO BE RELOCATED, CLASS III

60 PALM  
TO BE RELOCATED, CLASS III

60 PALM  
TO BE RELOCATED, CLASS III

60 PALM  
TO BE RELOCATED, CLASS III

60 PALM  
TO BE RELOCATED, CLASS III

60 PALM  
TO BE RELOCATED, CLASS III

60 PALM  
TO BE RELOCATED, CLASS III

60 PALM  
TO BE RELOCATED, CLASS III

60 PALM  
TO BE RELOCATED, CLASS III

60 PALM  
TO BE RELOCATED, CLASS III

60 PALM  
TO BE RELOCATED, CLASS III

60 PALM  
TO BE RELOCATED, CLASS III

**NOTE:**  
SEE SHEET 1 FOR ALL GENERAL AND CONSTRUCTION NOTES.

**NOTE:**  
ALL FLAGGED ELEVATIONS TO BE CHECKED IN THE FIELD BY THE ENGINEER \*45 BUILT 7.27.84 BRET!

**BENCH MARK:** ELEVATION 923.327  
BRASS DISK IN CAP WELL STAMPED FG-C AT VICTORIA AVE. & MADISON ST. AT S'LY DRIVE VICTORIA AVE.

ALBERT A. WEBB ASSOCIATES CIVIL ENGINEERS RIVERSIDE, CALIFORNIA APPROVED BY <i>R. Michael Cull</i> DATE 7/22/81 R.E. No. 30266		CITY OF RIVERSIDE, CALIFORNIA DEPARTMENT OF PUBLIC WORKS APPROVED BY <i>[Signature]</i> DATE 7/25/81 PRINCIPAL ENGINEER PARK DEPARTMENT TRAFFIC DIVISION CHIEF PUB. WKS. ENGR. <i>[Signature]</i> 10-55 DATE <i>Oct 25 1983</i>		EMERGENCY JOBS BILL - 1983 LINCOLN AVE. WIDENING GRACE ST. TO MADISON ST. ACCOUNT No. 15-551-473 DRAWING NUMBER <b>R-2377</b> SHEET <b>3</b> OF <b>3</b> <b>80-186-A</b>	
W.O. 80-186 FOR CITY OF RIVERSIDE F.B. 1013	MARK	DESIGNED BY <i>MS</i>	REVISIONS	APPR. DATE	SCALE: H= 1"=20' V= 1"=4'