

CONSTRUCTION LEGEND

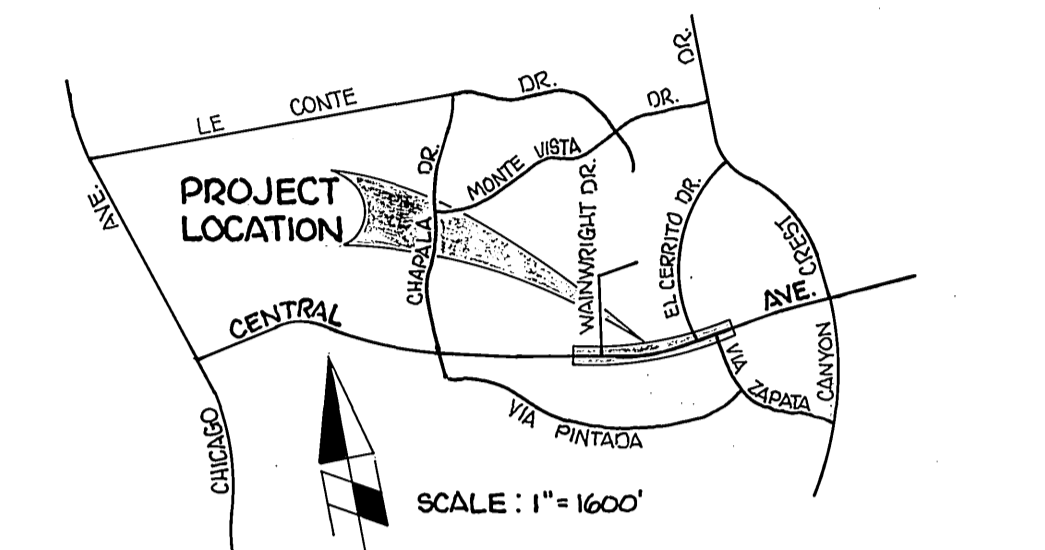
- CENTER LINE ———— C ———— TOP OF SLOPE
- RIGHT-OF-WAY LINE ———— R/W ———— TOE OF SLOPE
- SUBDIVISION LOT LINE ———— FL ———— DIRECTION OF FLOW
- CONSTRUCT STRUCTURAL SECTION OF 0.40' A.C. OVER 0.86' CRUSHED AGGREGATE BASE (CAB) CLASS 2.
- REMOVE EXISTING STRUCTURAL SECTION AND CONSTRUCT STRUCTURAL SECTION OF 0.40' A.C. OVER 0.86' CRUSHED AGGREGATE BASE (CAB) CLASS 2.
- OVERLAY WITH VARIABLE THICKNESS A.C. (0.5" MIN.)
- REMOVE EXISTING A.C. PAVEMENT.

GENERAL CONSTRUCTION NOTES

- 1 ALL ELEVATIONS SHOWN ON THE PLAN SHALL BE STAKED IN THE FIELD.
- 2 EXISTING UTILITIES SHOWN ON THIS PLAN, ARE PLOTTED FROM UTILITY RECORDS, THE CONTRACTOR IS REQUIRED TO TAKE DUE PRECAUTIONARY MEASURES TO LOCATE AND PROTECT ALL UTILITIES WHETHER OR NOT SHOWN ON THIS PLAN.

SPECIFIC CONSTRUCTION NOTES

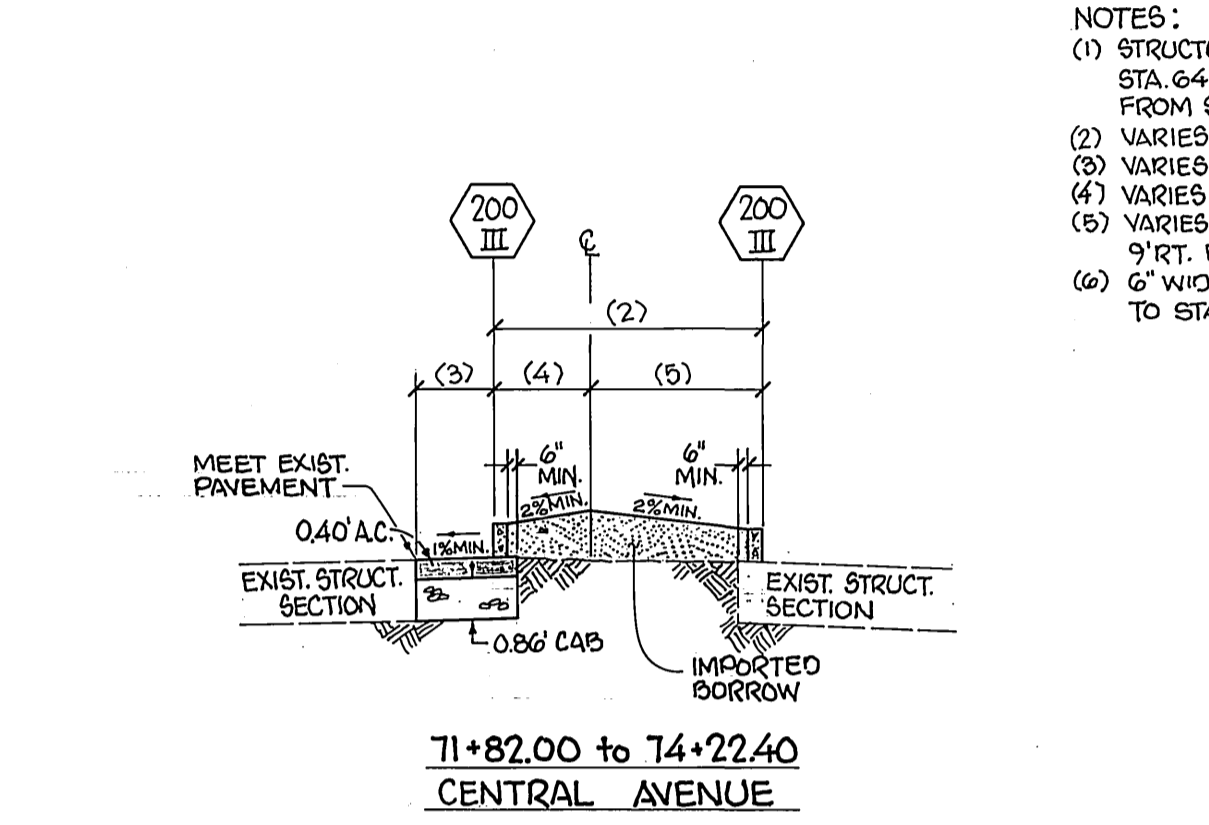
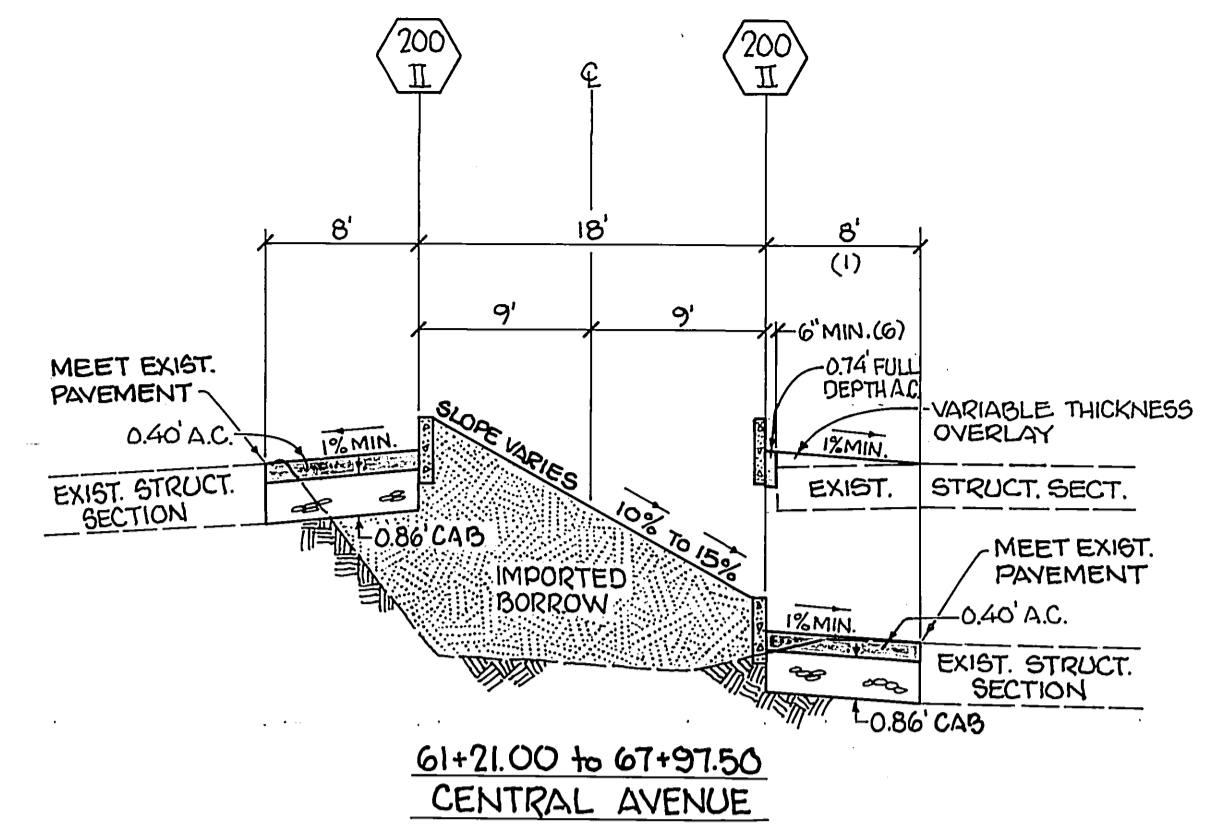
NUMBERS ABOVE 100 IN A HEXAGON ON THE PLAN REFER TO THE RESPECTIVE STANDARD DRAWING AND SHALL BE CONSTRUCTED ACCORDINGLY, UNLESS MODIFICATIONS ARE NOTED ON THE PLAN OR IN THESE NOTES. ANY NUMBER SHOWN BELOW THE STANDARD DRAWING NUMBER INDICATES THE SPECIFIC ALTERNATE TO BE CONSTRUCTED.



PROJECT LOCATION MAP

EXISTING SIGN TREATMENT CHART

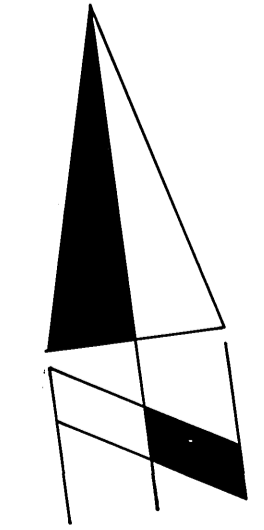
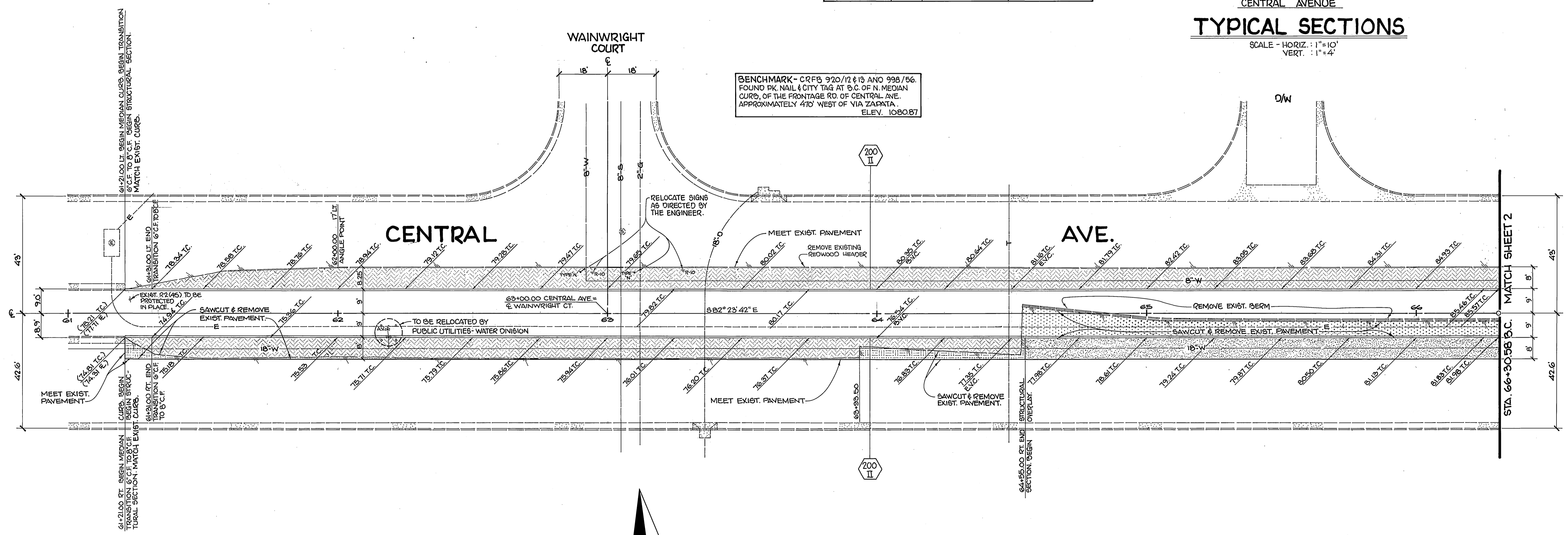
SALVAGE EXISTING SIGNS		
TYPE	QTY.	LOCATION
C 20 (LT)	2	55+26 ±
R 18 (LT)	1	73+03 ±
R 2 (4S)	1	73+46 ±
W 74 (RT)	1	76+41 ±
W 74 (RT)	1	78+41 ±
RELOCATE EXISTING SIGNS		
TYPE	QTY.	FROM STA. TO STA.
RT, RIO, TYPE 'N'	1 EA.	72+49 ± TO 72+00 ±



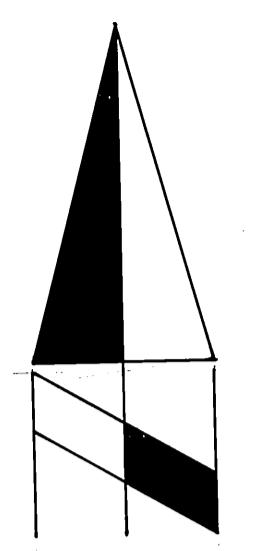
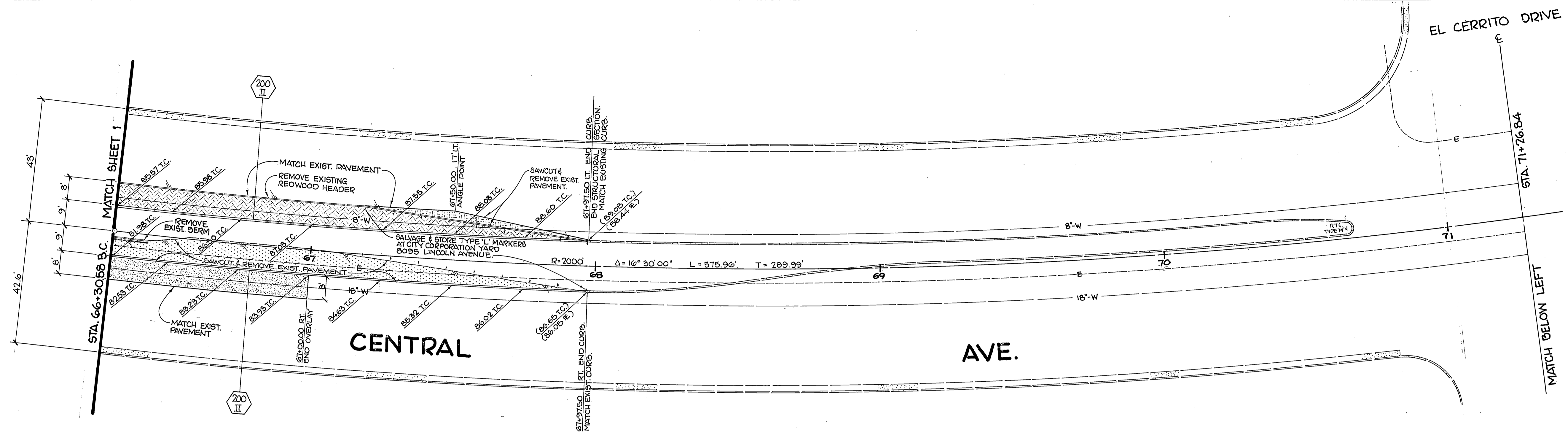
TYPICAL SECTIONS

SCALE - HORIZ. : 1" = 10'
VERT. : 1" = 4'

- NOTES:
- (1) STRUCTURAL SECTION FROM STA. 61+21.00 TO STA. 64+55.00; VARIABLE THICKNESS OVERLAY (0.5" MIN.) FROM STA. 64+55.00 TO STA. 67+00.00.
 - (2) VARIES 3' TO 18' FROM STA. 71+82.00 TO STA. 74+22.40.
 - (3) VARIES 0' TO 9' FROM STA. 72+23 ± TO STA. 74+22.40.
 - (4) VARIES 3' RT. TO 9' LT. FROM STA. 71+82.00 TO STA. 74+22.40.
 - (5) VARIES 6' RT. TO 9' RT. FROM STA. 71+82.00 TO STA. 72+21.00; 9' RT. FROM STA. 72+21.00 TO STA. 74+22.00.
 - (6) 6' WIDE, 0.74' FULL DEPTH A.C. FROM STA. 64+55.00 TO STA. 67+97.50.

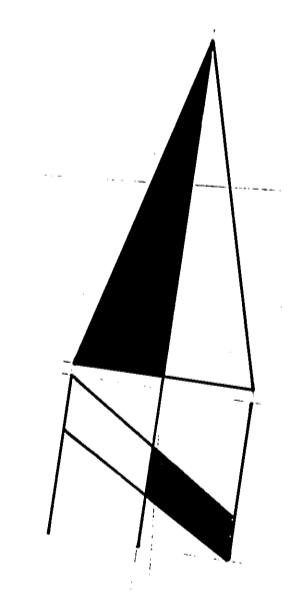
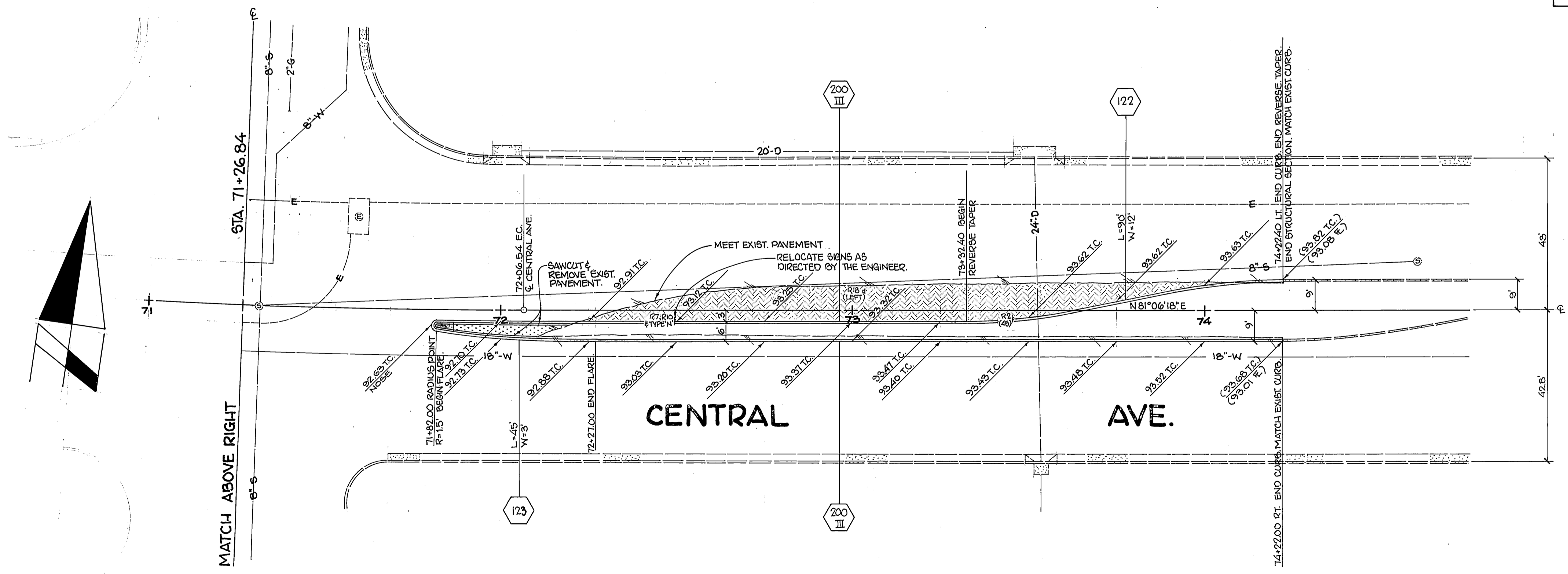


CITY OF RIVERSIDE PUBLIC WORKS DEPARTMENT		CENTRAL AVE. MEDIANS AT EL CERRITO		ACCOUNT NO. 30-575-386-30 R-2428 SHEET 1 OF 2
DESIGNED BY: <i>BIM</i> DRAWN BY: <i>SK</i> CHECKED BY: <i>MM</i>	REVISIONS:	APPROVED BY: <i>D. Ray</i> CHIEF P.W. ENGINEER	DATE: MARCH 26, 1982	HORIZ. SCALE: 1" = 20' VERT. SCALE: 1" = N/A



EL CERRITO DRIVE

BENCHMARK - CRFB 920/12418 AND 998/56 FOUND PK. NAIL & CITY TAG AT B.C. OF N. MEDIAN CURB, OF THE FRONTAGE RD. OF CENTRAL AVE. APPROXIMATELY 470' WEST OF VIA ZAPATA. ELEV. 1080.87



<p>AS BUILT 5/1/82 SK INDEXED WF</p>		<p>ACCOUNT NO. 30-575-386-90</p>	
<p>CITY OF RIVERSIDE PUBLIC WORKS DEPARTMENT</p>		<p>CENTRAL AVE. MEDIANS AT EL CERRITO</p>	
<p>APPROVED BY PRINCIPAL ENGINEER DATE 3/23/82 TRAFFIC DIVISION CHIEF P.W. ENGINEER</p>	<p>BY DATE 3/23/82 DATE March 26, 1982</p>	<p>APPROVED BY PUBLIC WORKS DIRECTOR DATE</p>	<p>R-2428 SHEET 2 OF 2</p>
<p>MARK REVISIONS APPR. DATE</p>		<p>HORIZ. SCALE: 1" = 20' VERT. SCALE: 1" = N/A</p>	
<p>DESIGNED BY BIM DRAWN BY SK CHECKED BY</p>		<p>DATE</p>	