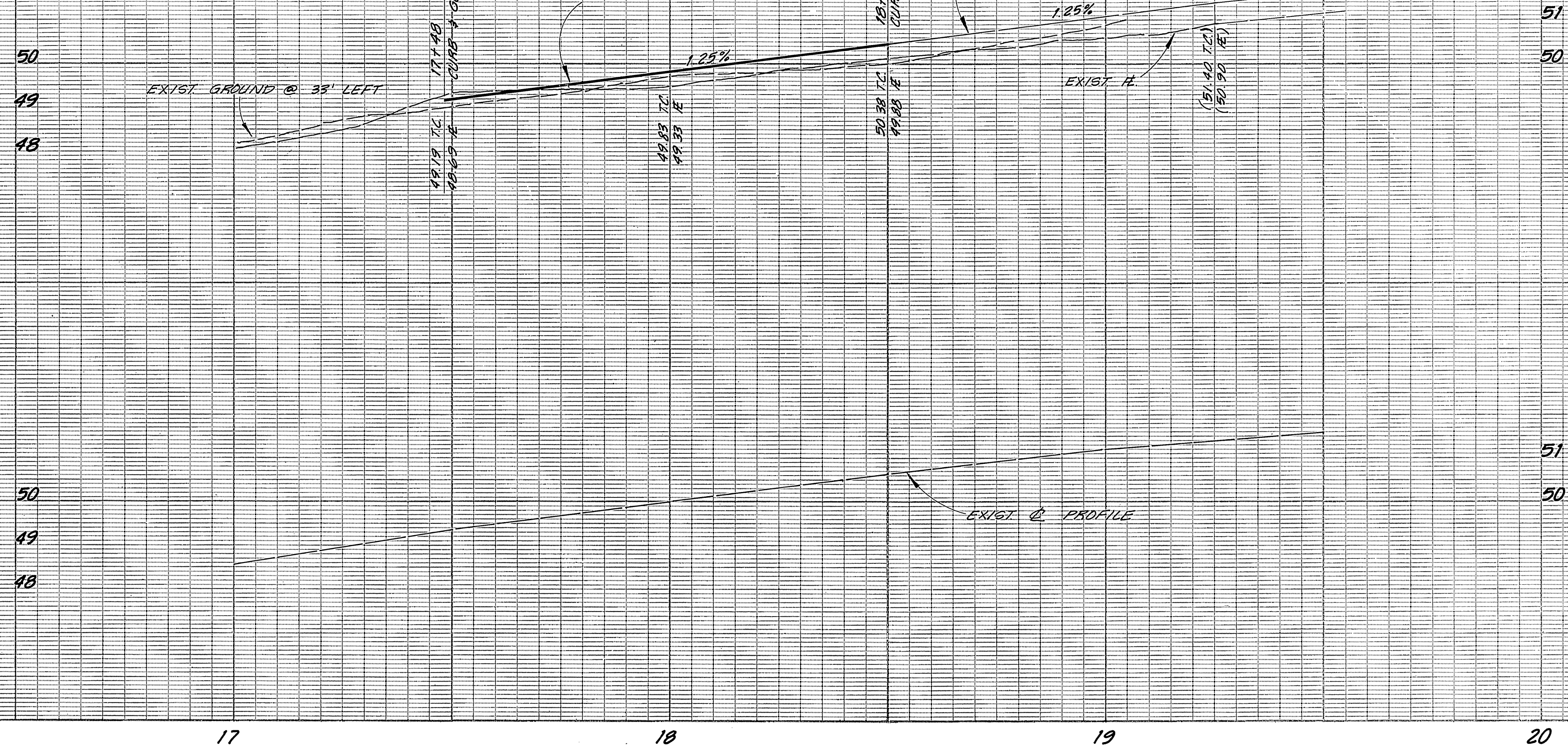


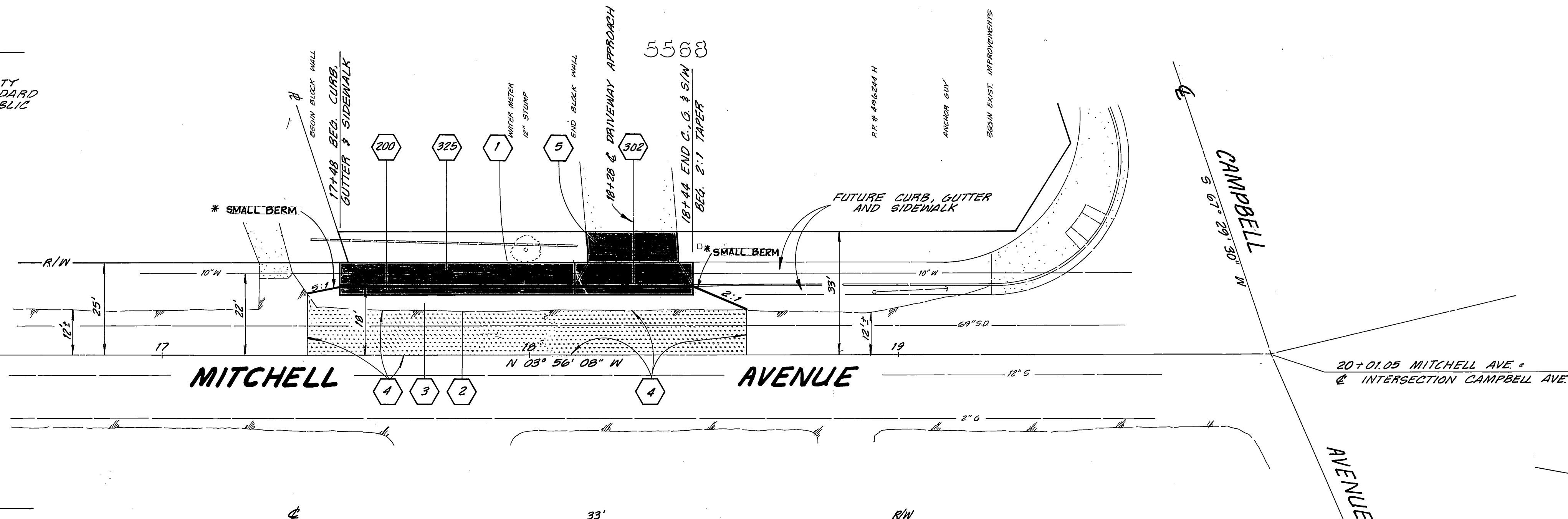
18' LEFT



T.B.M. R.R. SPIKE IN P.P. # 24433 J
 UP 12' 87' NLY OF CAMPBELL
 AVENUE, PER C.A.F.B. 1021/27.
 ELEV. 753.748

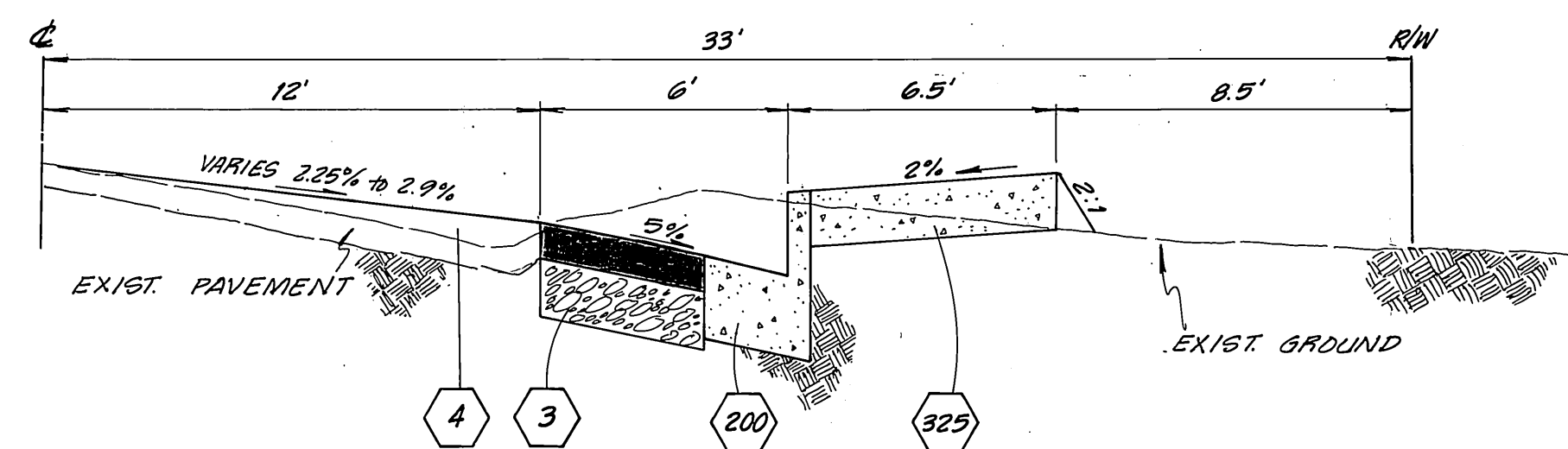
GENERAL NOTES:

1. CONSTRUCTION SHALL BE IN ACCORDANCE WITH THE CITY OF RIVERSIDE DEPARTMENT OF PUBLIC WORKS STANDARD DRAWINGS AND THE STANDARD SPECIFICATIONS FOR PUBLIC WORKS CONSTRUCTION, 1977 EDITION.



CONSTRUCTION NOTES:

- 1 WATER METER TO BE ADJUSTED TO GRADE BY CITY FORCES.
- 2 TRIM EXIST. PAVEMENT TO A SMOOTH STRAIGHT LINE.
- 3 CONST. 21' A.C. PAVING OVER .33' CRUSHED AGGREGATE BASE.
- 4 CONST. VARIABLE THICKNESS A.C. OVERLAY.
- 5 REMOVE EXIST. CONC. DRIVEWAY TO 33' LEFT OF @, REGRADE AND REPLACE CONC. DRIVEWAY.
- 200 CONST. CURB & GUTTER PER STD. DWG. NO. 200. (6" C.F.).
- 302 CONST. DRIVEWAY APPROACH PER STD. DWG. NO. 302, A = 25', B = 32'.
- 325 CONST. CURB TYPE SIDEWALK PER STD. DWG. NO. 325.



TYPICAL X-SECTION
 NO SCALE
 STA. 17+48 TO STA. 18+44

<p>CITY OF RIVERSIDE PUBLIC WORKS DEPARTMENT</p>		<p>COMPLETION OF 5568 MITCHELL AVENUE</p>		<p>R-2452</p>
<p>APPROVED BY PRINCIPAL ENGINEER PARK DEPARTMENT TRAFFIC DIVISION CHIEF P.W. ENGINEER</p>	<p>DATE 3/23/82</p>	<p>APPROVED BY PUBLIC WORKS DIRECTOR</p>	<p>W'LY SIDE OF MITCHELL, 150' S'LY OF CAMPBELL</p>	<p>SHEET 1 OF 1</p>
<p>DESIGNED BY</p>	<p>DRAWN BY</p>	<p>CHECKED BY</p>	<p>DATE March 26, 1982</p>	<p>HORIZ. SCALE: 1" = 20' VERT. SCALE: 1" = 2'</p>

* As Built 9.20.85 JL

INDEXED WF

ACCOUNT NO. 30-975-392-30

C.A.F.B. 1036/133