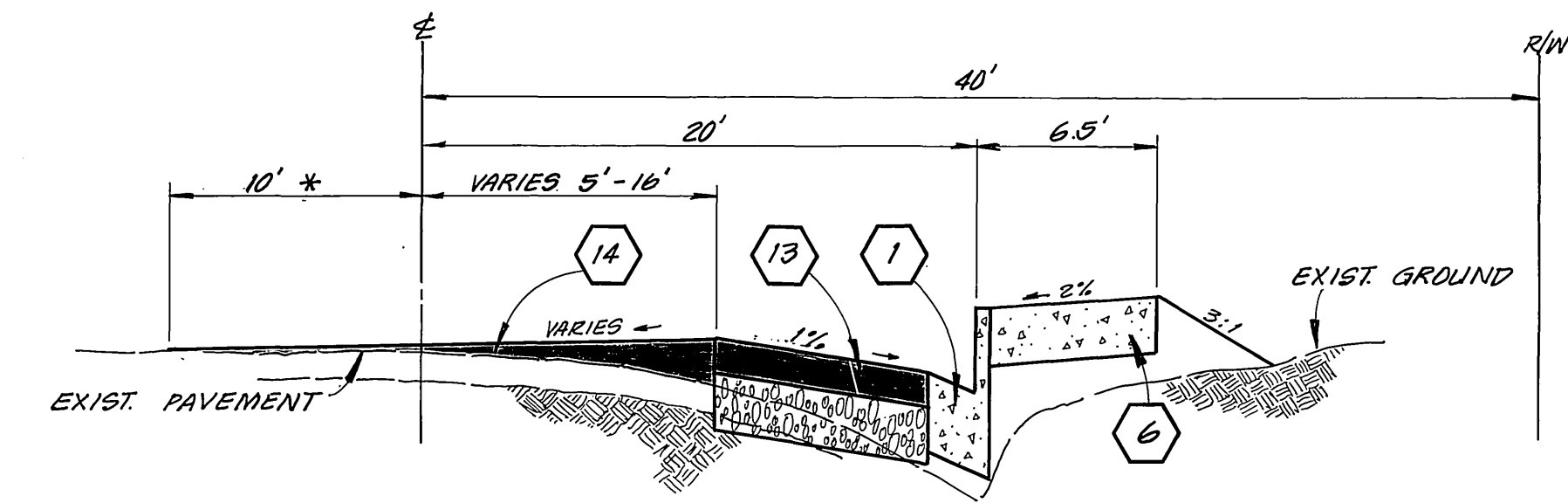
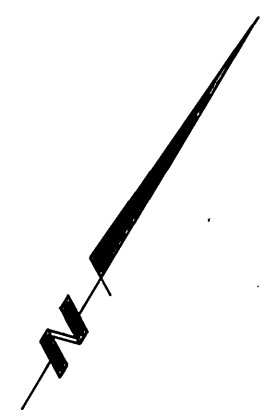


LOCATION MAP
NO SCALE



* EXIST'S ONLY BETWEEN
STA. 2+30 TO 6+10
13+75 TO 19+00
20+93 TO 21+25

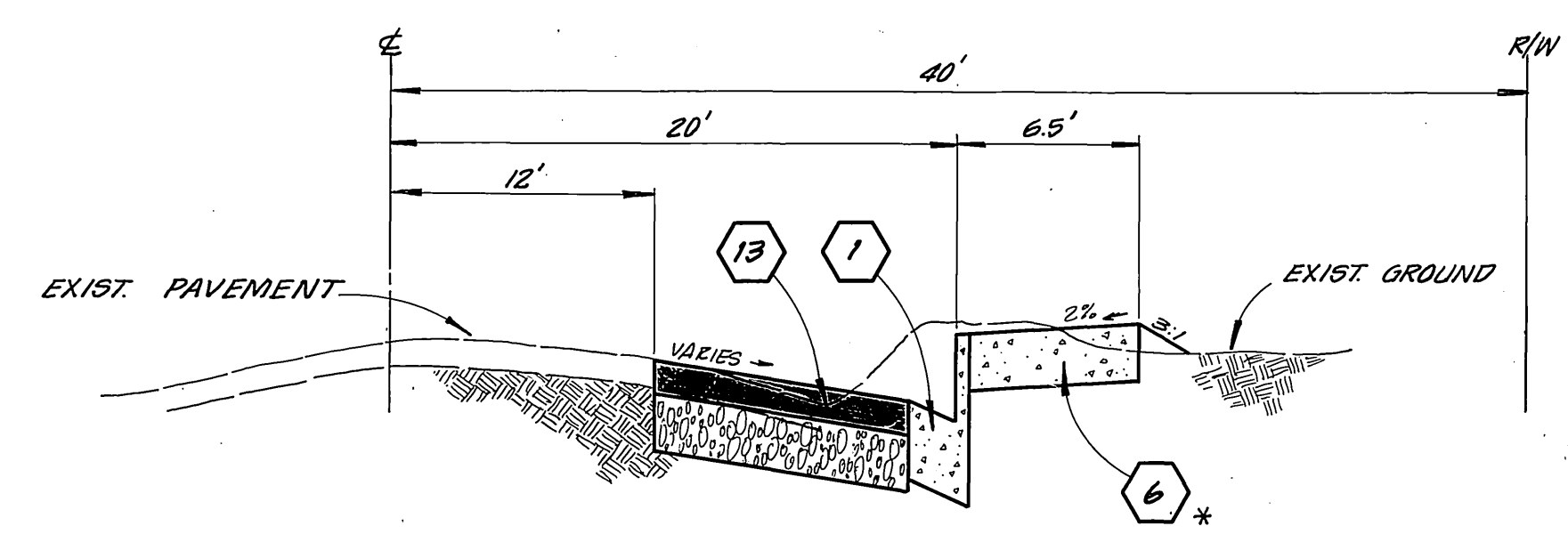
TYPICAL SECTION
NO SCALE

GENERAL NOTES:

1. CONSTRUCTION SHALL BE IN ACCORDANCE WITH THE CITY OF RIVERSIDE, STD. DRAWINGS AND STD. SPECS. FOR PUBLIC WORKS CONSTRUCTION, 1982 EDITION.

CONSTRUCTION NOTES:

- 1 — CONSTRUCT CURB & GUTTER PER STANDARD DRAWING NO. 200, 6" C.F.
- 2 —
- 3 — CONSTRUCT SPANDREL PER STANDARD DRAWING NO. 220.
- 4 — CONSTRUCT DRIVEWAY APPROACH PER STANDARD DRAWING NO. 302, A & B AS NOTED.
- 5 — CONSTRUCT WHEELCHAIR RAMP PER STANDARD DRAWING NO. 304.
- 6 — CONSTRUCT CURB TYPE SIDEWALK PER STANDARD DRAWING NO. 325.
- 7 — CONSTRUCT PROPERTY LINE SIDEWALK PER STANDARD DRAWING NO. 323.
- 8 — NOTCH SIDEWALK TO CLEAR TREE. MINIMUM SIDEWALK WIDTH TO BE 4'.
- 9 — CONSTRUCT MATCH-UP CONCRETE SIDEWALK.
- 10 — GRADE BEHIND WALK AT 3:1 SLOPE
- 11 — REMOVE A.C. PAVING AND CONSTRUCT NEW A.C. DRIVE (0.25' THICK) TO MATCH.
- 12 — REMOVE CONCRETE PAVING AND CONSTRUCT NEW CONCRETE DRIVEWAY TO MATCH.
- 13 — CONSTRUCT 0.25' A.C. PAVING OVER 0.33' C.A.B.
- 14 — CONSTRUCT VARIABLE THICKNESS A.C. OVERLAY.
- 15 — REMOVE TREE.
- 16 — RELOCATE PALM TREE TO CLEAR SIDEWALK.
- 17 — ADJUST WATER METER BOX TO GRADE.
- 18 — RELOCATE WATER METER (BY OTHERS).
- 19 — RELOCATE FENCE (BY OWNER).
- 20 — REGRADE DIRT DRIVEWAY.
- 21 — REGRADE DIRT ALLEY.
- 22 — ADJUST MANHOLE TO GRADE.
- 23 — INSTALL FURNISHED PIPE. PIPE WILL BE FURNISHED BY THE PROPERTY OWNER MK. FRANK DOT AT 3737 HARRISON ST.



TYPICAL SECTION
BETWEEN STA. 6+10 & 7+94.4
STA. 9+87.38 TO 11+00
NO SCALE

* NO SIDEWALK: STA. 2+49.7 TO STA. 7+94.4

CITY OF RIVERSIDE PUBLIC WORKS DEPARTMENT		HARRISON STREET WIDENING AN H.C.D. PROJECT		INVENTED UP ACCOUNT NO. 13-500-539
APPROVED BY: <i>[Signature]</i> DATE: 10/23/82 PRINCIPAL ENGINEER		APPROVED BY: <i>[Signature]</i> PUBLIC WORKS DIRECTOR		R-2469
MARK: _____ REVISIONS: _____ APPR. DATE: _____ DESIGNED BY: <i>[Signature]</i> DRAWN BY: <i>[Signature]</i> CHECKED BY: <i>[Signature]</i>		DATE: 10/23/82		SHEET 1 OF 5
HORIZ. SCALE: 1" = NONE		REF: FB LL #2		AS BUILT 6/85

PC-1281

78
77
76
75 ♀

75 ♀
74
73

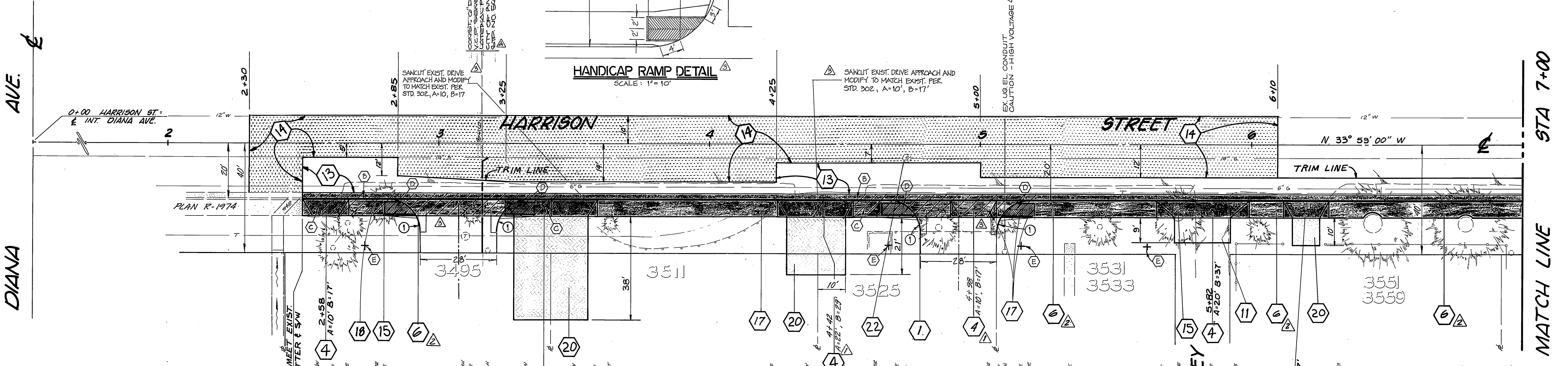
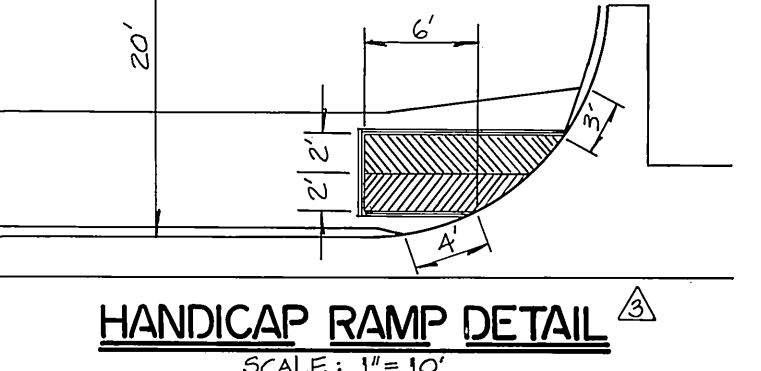
78
77
76
75 RT

75 RT
74
73

CITY OF RIVERSIDE ELECTRIC OVERHEAD AND UNDERGROUND APPROVED BY: <i>Michael J. Tordella</i> DATE: 3/29/92	CITY OF RIVERSIDE WATER SYSTEM APPROVED BY: <i>Richard S. Dinkel</i> DATE: 10-28-92
---	---

GENERAL NOTES

- DEVELOPER TO GIVE CITY WATER DIVISION FIVE (5) WORKING DAYS WRITTEN NOTICE PRIOR TO START OF CONSTRUCTION AND TO ALLOW CITY TEN (10) DAYS FOR COMPLETION OF WORK. (714) 351-6150.



- CONSTRUCTION NOTES**
- (A) SANICUT AND REMOVE EXIST. CONCRETE CURB, GUTTER, SIDEWALK AND DRIVE APPROACHES AS SHOWN BY
 - (B) CONSTRUCT 6" CURB W/2" GUTTER PER C/R STD. DWG. NO. 200 (TYPE I)
 - (C) CONSTRUCT 6" WIDE S/W PER C/R STD. DWG. NO. 325
 - (D) CONSTRUCT HANDICAP RAMP PER DETAIL, THIS SHEET
 - (E) PLANT STREET TREE TO SPECIFICATIONS OF THE PARK AND RECREATION DEPT. 18.5' BEHIND THE CURB FACE (REFER TO GENERAL NOTES ON STREET IMPROVEMENT PLANS FOR BELMONT DRIVE PLAN NO. R-3277)
 - (F) RELOCATE PALM TREE TO THE SPECIFICATIONS OF THE PARK AND RECREATION DEPT. TO HARRISON PARK. CONTACT: DAN ROBERTS TO SPOT TREE LOCATION. (714) 351-6122)
 - (G) THIS PROJECT REQUIRES RELOCATION OF EXIST. FP # 796924 H BY DEPT. FORCES AT DEVELOPER'S EXPENSE. CONTACT THE ELECTRIC DEPT. AT (714) 782-5404. 30 DAYS PRIOR TO CONSTRUCTION TO ARRANGE FOR PAYMENT OF CHARGES, SCHEDULING AND COORDINATION OF THE DEPARTMENT WORK.
 - (H) EX. WATER METERS - EX. WATER SERVICE LINE TO BE CUT AND PLUGGED @ MAIN, WATER METERS & BOXES TO BE SALVAGED; ALL WORK BY CITY FORCES.

JN BEELER and associates
LAND SURVEYING AND MAPPING
6104 RIVERSIDE AVENUE SUITE B
RIVERSIDE, CA 92506
(714) 982-2216

Underground Service Alert
Call: TOLL FREE
1-800-422-4133
TWO WORKING DAYS BEFORE YOU DIG

MARK	REVISIONS	DATE	APP'D.	DATE
1	AS BUILT	10/23/92		

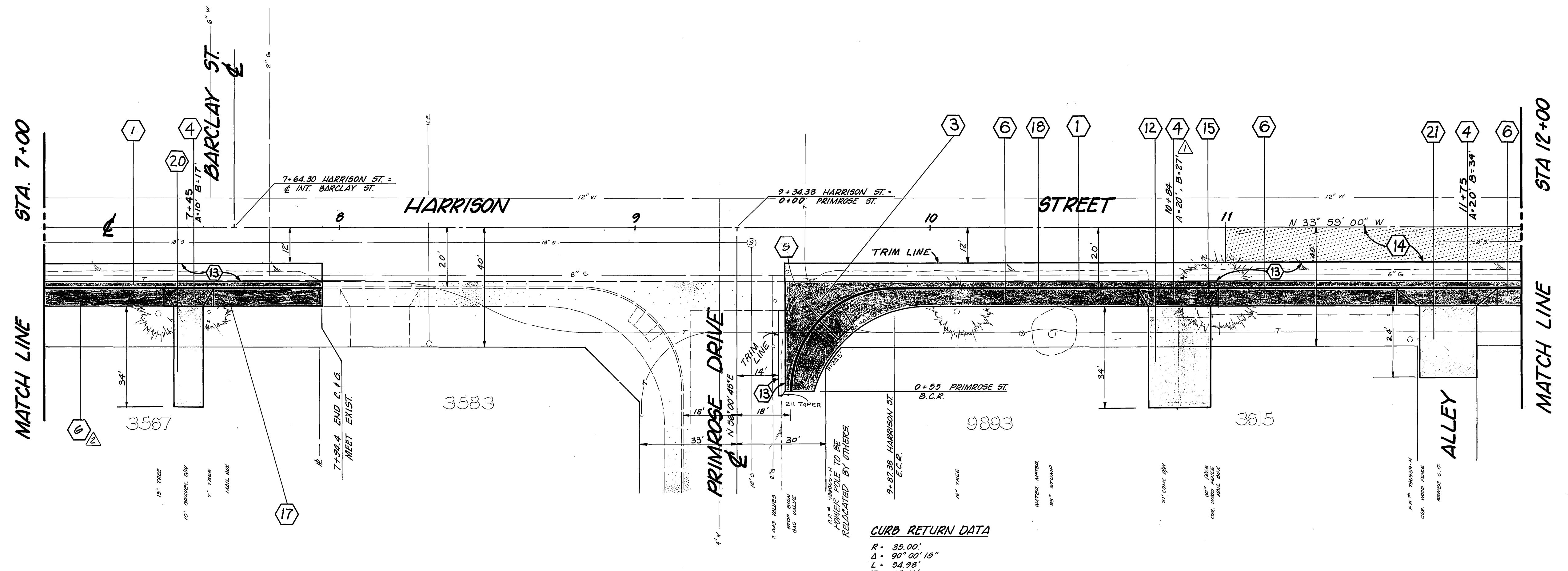
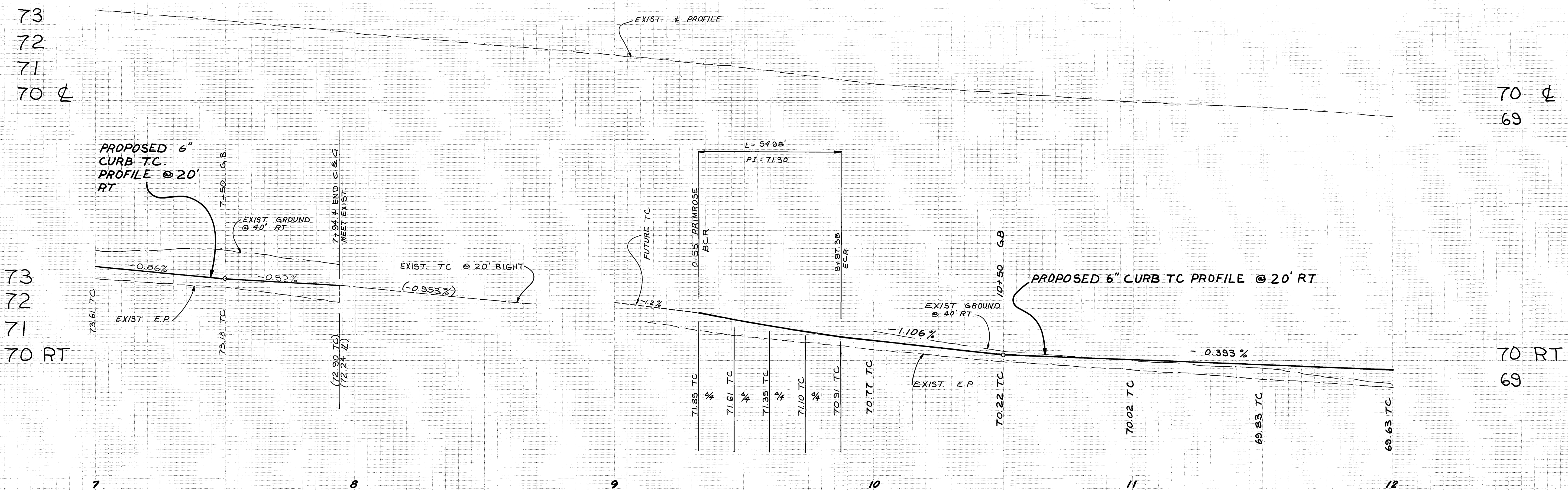
CITY OF RIVERSIDE
PUBLIC WORKS DEPARTMENT

APPROVED BY: <i>Michael J. Tordella</i>	DATE: 10/23/92
PRINCIPAL ENGINEER	
TRAFFIC DIVISION	
CHIEF P.W. ENGINEER	

HARRISON STREET WIDENING
AN HCD PROJECT

E'LY SIDE BETWEEN DIANA AVE. AND MAGNOLIA AVE.

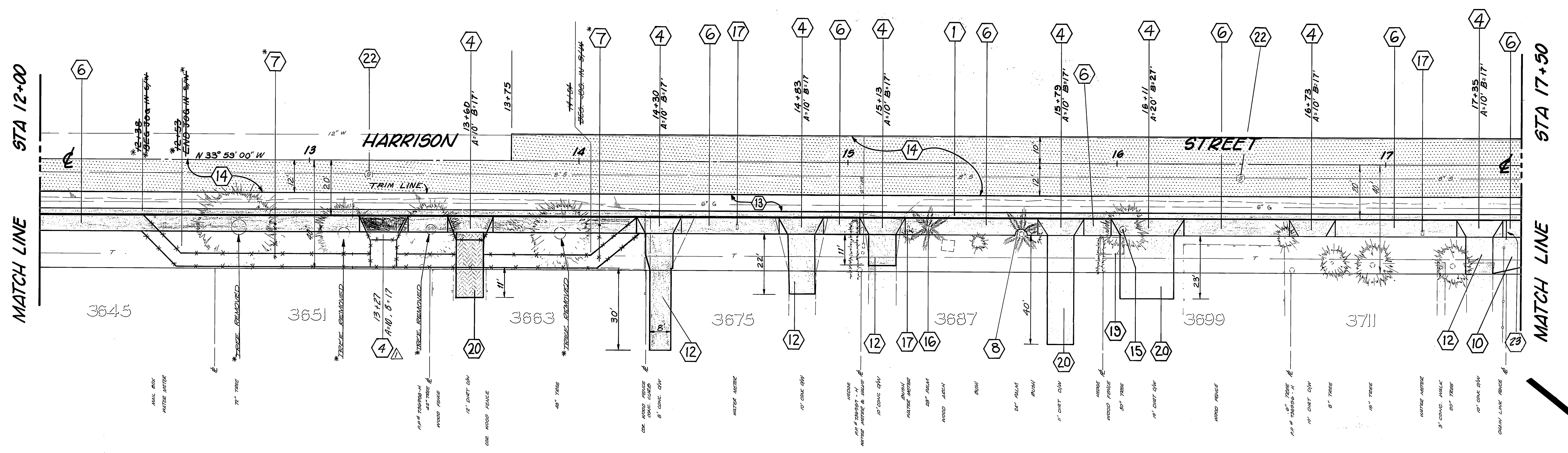
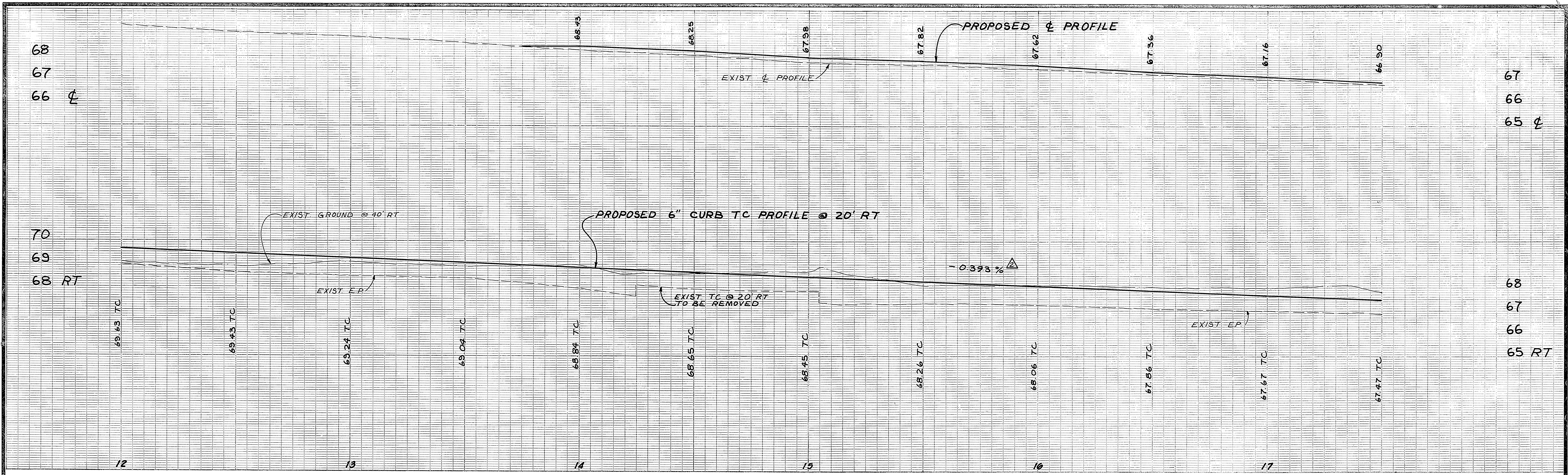
ACCOUNT NO. 15-530-539
R-2469
SHEET 2 OF 5
REF: FO LL 2



CURB RETURN DATA
 R = 35.00'
 Δ = 90° 00' 15"
 L = 34.98'
 T = 35.00'

CITY OF RIVERSIDE PUBLIC WORKS DEPARTMENT		HARRISON STREET WIDENING AN HCD PROJECT		ACCOUNT NO. 19-590-599 R-2469
APPROVED BY PRINCIPAL ENGINEER PARK DEPARTMENT TRAFFIC DIVISION CHIEF P. W. ENGINEER		APPROVED BY PUBLIC WORKS DIRECTOR		SHEET 3 OF 5
DESIGNED BY DRAWN BY CHECKED BY	REVISIONS APPR. DATE	DATE 10/22/12	HORIZ. SCALE: 1" = 20' VERT. SCALE: 1" = 2'	REF: FD LL 2

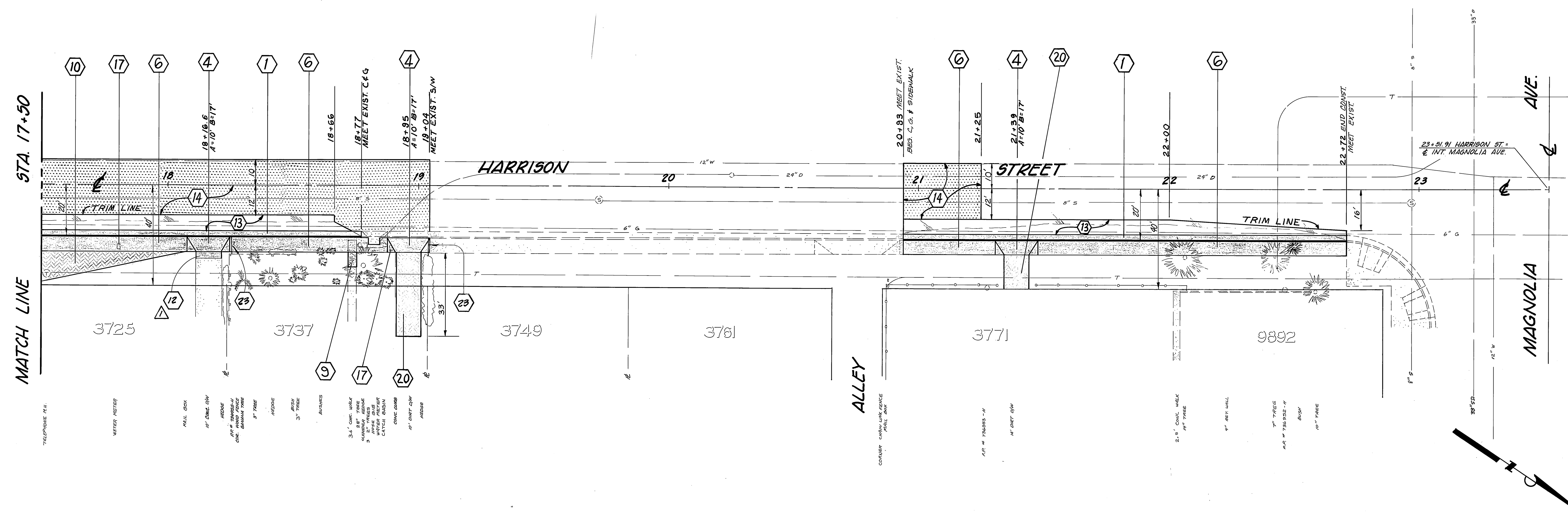
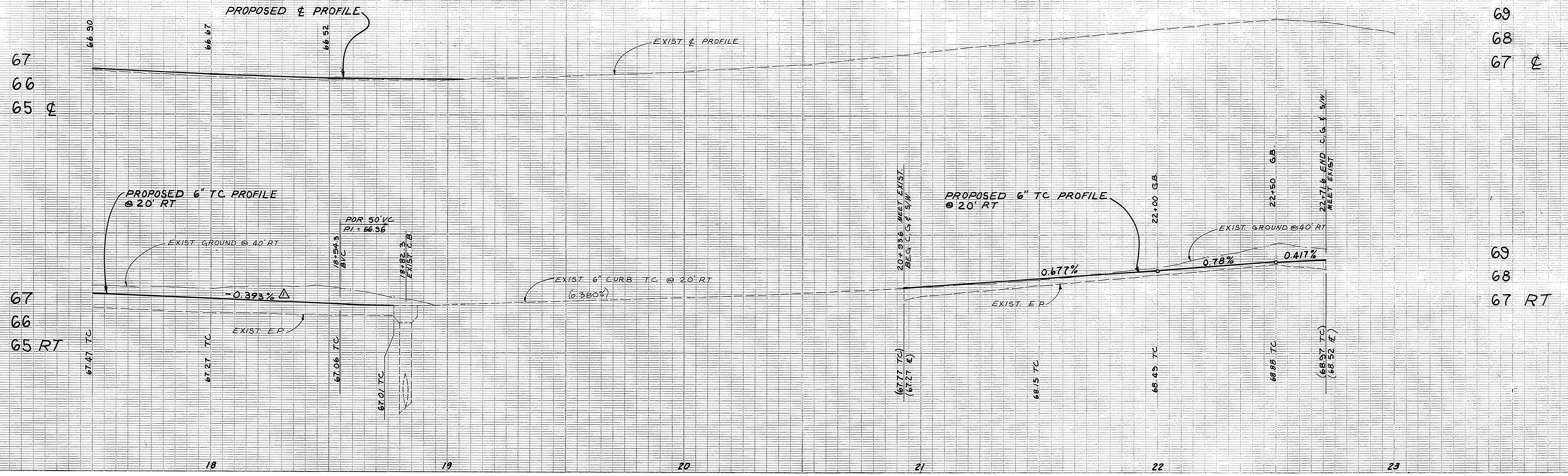
FD-1051



CITY OF RIVERSIDE PUBLIC WORKS DEPARTMENT		HARRISON STREET WIDENING AN HCD PROJECT		ACCOUNT NO. 75-550-339 R-2469
APPROVED BY: [Signature] DATE: 10/22/82	APPROVED BY: [Signature] DATE: 10/22/82	E'LY SIDE BETWEEN DIANA AVE. AND MAGNOLIA AVE.		SHEET 4 OF 5
DESIGNED BY: [Signature] DRAWN BY: [Signature] CHECKED BY: [Signature]		HORIZ. SCALE: 1" = 20' VERT. SCALE: 1" = 2'		REF: FB LL 2

*AS BUILT 11/84 FOR
 AS BUILT 6/85

FB-1281



- TELEPHONE P.V.
- WATER METER
- MAIL BOX
- 10" CONC. SW
- 18" CONC. SW
- 4" CONC. SW
- 1" CONC. SW
- 3" CONC. SW
- 4" CONC. SW
- 5" CONC. SW
- 6" CONC. SW
- 7" CONC. SW
- 8" CONC. SW
- 9" CONC. SW
- 10" CONC. SW
- 11" CONC. SW
- 12" CONC. SW
- 13" CONC. SW
- 14" CONC. SW
- 15" CONC. SW
- 16" CONC. SW
- 17" CONC. SW
- 18" CONC. SW
- 19" CONC. SW
- 20" CONC. SW
- 21" CONC. SW
- 22" CONC. SW
- 23" CONC. SW
- 24" CONC. SW
- 25" CONC. SW
- 26" CONC. SW
- 27" CONC. SW
- 28" CONC. SW
- 29" CONC. SW
- 30" CONC. SW
- 31" CONC. SW
- 32" CONC. SW
- 33" CONC. SW
- 34" CONC. SW
- 35" CONC. SW
- 36" CONC. SW
- 37" CONC. SW
- 38" CONC. SW
- 39" CONC. SW
- 40" CONC. SW
- 41" CONC. SW
- 42" CONC. SW
- 43" CONC. SW
- 44" CONC. SW
- 45" CONC. SW
- 46" CONC. SW
- 47" CONC. SW
- 48" CONC. SW
- 49" CONC. SW
- 50" CONC. SW

DESIGNED BY: <i>Kelly</i>		DRAWN BY: <i>LWE</i>		CHECKED BY: <i>DAV</i>	
<p>CITY OF RIVERSIDE PUBLIC WORKS DEPARTMENT</p> <p>APPROVED BY: <i>[Signature]</i> DATE: <i>10/10/82</i> PRINCIPAL ENGINEER PARK DEPARTMENT</p> <p>APPROVED BY: <i>[Signature]</i> DATE: <i>10/21/82</i> CHIEF P. W. ENGINEER</p>					
<p>HARRISON STREET WIDENING AN HCD PROJECT</p> <p>E'LY SIDE BETWEEN DIANA AVE. AND MAGNOLIA AVE.</p>			<p>AS BUILT 6/85</p> <p>INDEXED LE ACCOUNT NO. 15-350-539 R-2469 SHEET 5 OF 5 REF: FB LL 2</p>		
<p>HORIZ. SCALE: 1" = 20' VERT. SCALE: 1" = 2'</p>					