

BENCH MARK
 G2-F PER FB 739/60.
 P.K. NAIL AND TAG IN CENTER OF N.W.
 CURB RETURN @ TYLER ST. AND CAMPBELL.
 ELEV. 780.144

T.B.M. CHISELLED SQUARE
 BACK OF CURB NEXT TO S.W.
 PORTION OF CATCH BASIN.
 60' ± NLY OF Q. KELLER
 AVE. AND 20' ± WLY OF Q.
 JONES AVE. ELEV. 765.45

CONSTRUCTION NOTES:

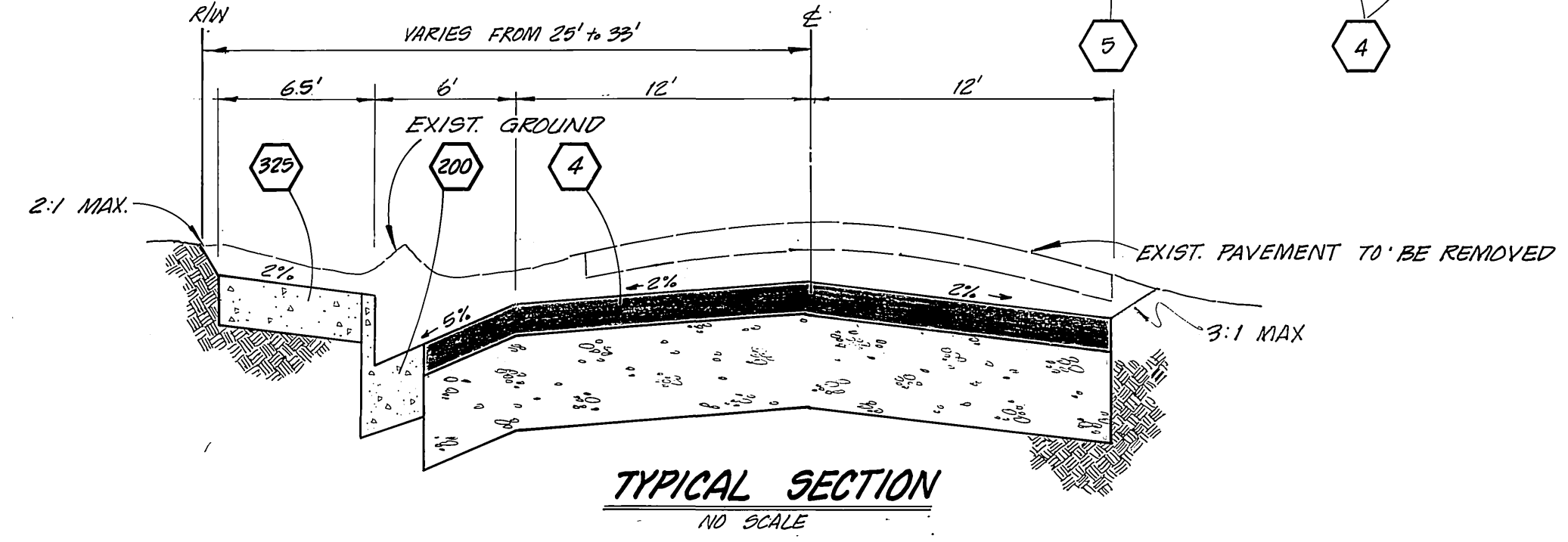
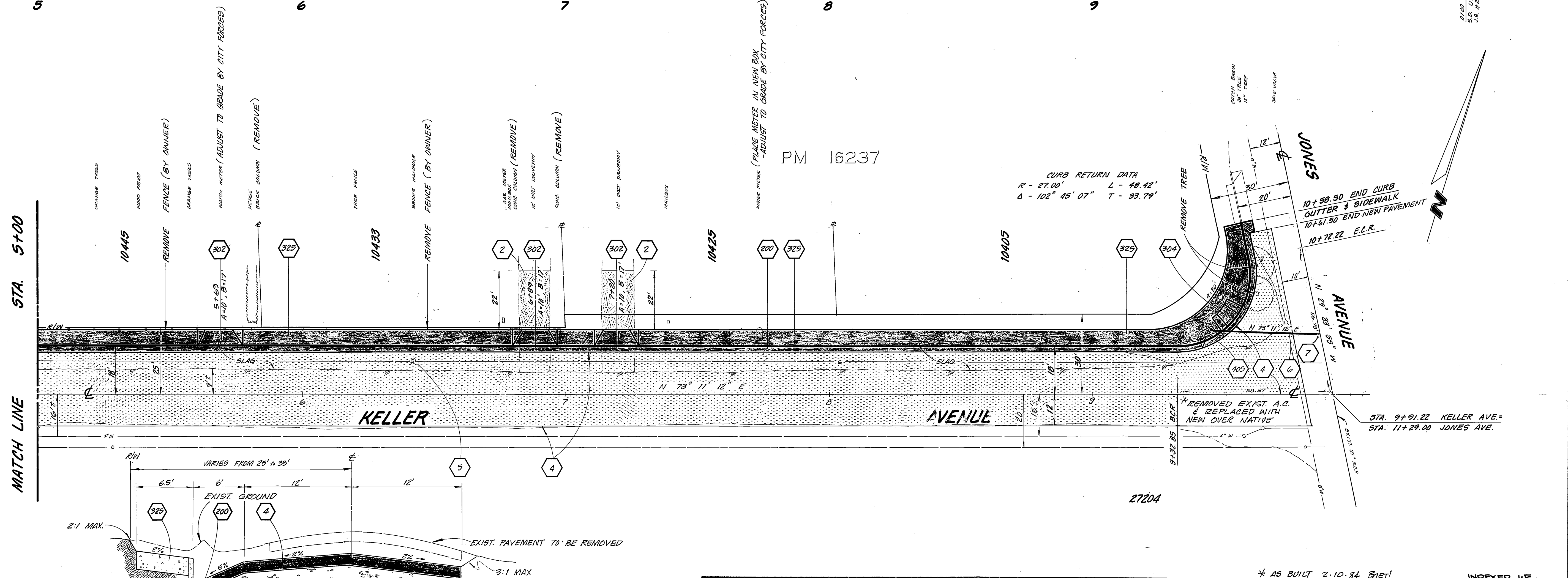
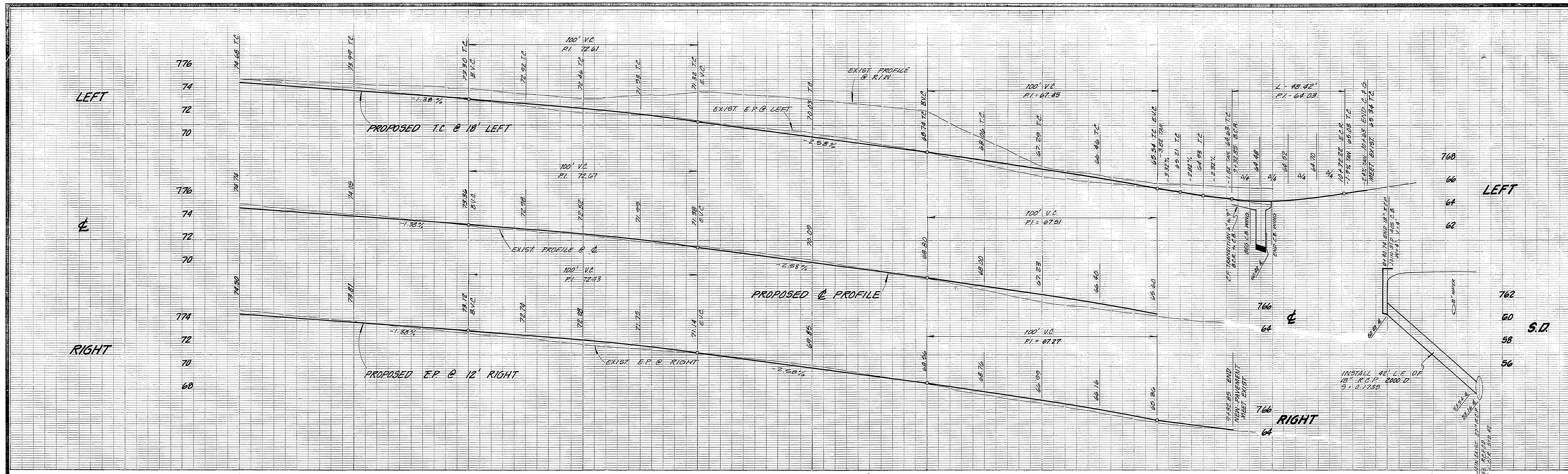
- 1 CONSTRUCT MATCH-UP CONCRETE DRIVEWAY.
- 2 REGRADE DIRT DRIVEWAY.
- 3 CONSTRUCT MATCH-UP ASPHALT DRIVEWAY.
- 4 CONSTRUCT 21' A.C. PAVING OVER .63' C.A.B.
- 5 ADJUST MANHOLE TO GRADE.
- 6 INSTALL 42" OF 18" R.C.P., 2000 D.
- 200 CONSTRUCT CURB & GUTTER PER STD. DWG. NO. 200. 6" C.F.
- 302 CONSTRUCT DRIVEWAY APPROACH AS PER STD. DWG. NO. 302, A & B AS NOTED.
- 304 CONSTRUCT WHEELCHAIR RAMP AS PER STD. DWG. 304

- 325 CONSTRUCT CONCRETE SIDEWALK AS PER STD. DWG. NO. 325.
- 405 CONSTRUCT CONCRETE CATCH BASIN PER STD. DWG. NO. 405, W = 4', V = 4'.
- 7 CONNECT 18" R.C.P. TO 27" R.C.P. WITH RIVERSIDE COUNTY FLOOD CONTROL JUNCTION STRUCTURE NO. 2. CONTACT JACK HANSON, 787-8667, 5 WORKING DAYS PRIOR TO START OF CONSTRUCTION

GENERAL NOTES:

1. CONSTRUCTION SHALL BE IN ACCORDANCE WITH THE CITY OF RIVERSIDE STANDARD DRAWINGS & STANDARD SPECIFICATIONS FOR PUBLIC WORKS CONSTRUCTION, 1982 EDITION.

CITY OF RIVERSIDE PUBLIC WORKS DEPARTMENT		APPROVED BY: <i>[Signature]</i> PUBLIC WORKS DIRECTOR	
		APPROVED BY: <i>[Signature]</i> CHIEF P. W. ENGINEER	
DESIGNED BY: <i>[Signature]</i> DRAWN BY: <i>[Signature]</i> CHECKED BY: <i>[Signature]</i>	REVISIONS: <i>[Table]</i>	APPR. DATE: <i>[Signature]</i> DATE: 11/8/92	PROJECT NO. 15-950-591 R-2476 BETWEEN BUSHNELL AND JONES AVENUES SHEET 1 OF 2 HORIZ. SCALE: 1" = 20' VERT. SCALE: 1" = 4' AS BUILT 2-10-84 ERET!



CITY OF RIVERSIDE PUBLIC WORKS DEPARTMENT		KELLER AVENUE STREET IMPROVEMENTS		INDEXED W/ ACCOUNT NO. 19-550-531
APPROVED BY <small>PRINCIPAL ENGINEER</small> <small>PARK DEPARTMENT</small> <small>TRAFFIC DIVISION</small> <small>CHIEF P.W. ENGINEER</small>	DATE <small>10/5/02</small> <small>10/2/02</small> <small>11-8</small>	APPROVED BY <small>PUBLIC WORKS DIRECTOR</small>	DATE <small>11/9/02</small>	R-2476 SHEET 2 OF 2
DESIGNED BY <i>Kell</i> DRAWN BY <i>Prot</i> CHECKED BY <i>WILL</i>		HORIZ. SCALE: 1" = 20' VERT. SCALE: 1" = 4' <small>* AS BUILT 2-10-84 Biet!</small> <small>CR.FB./LL.#3 P&S.1-9</small>		